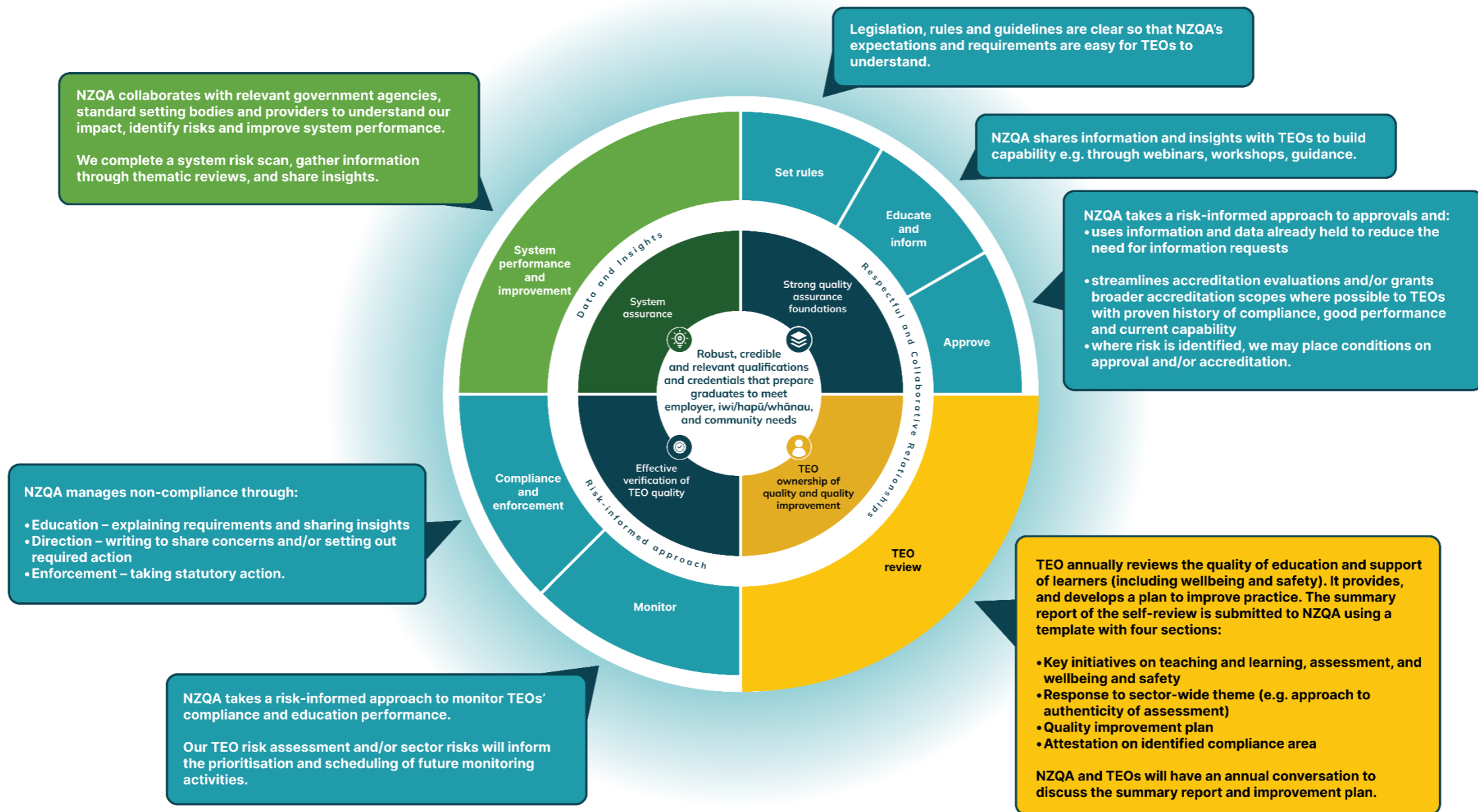


Draft integrated quality assurance framework (iQAF)

The iQAF cornerstones, levers and activities provide confidence that learners are achieving robust, credible and relevant qualifications and credentials that prepare them to meet employer, iwi/hapū/whānau, and community needs in New Zealand and internationally.



Integration between the iQAF components enables a risk-informed, tailored approach to quality assurance, and supports continuous improvement.

