





Draft Integrated Quality Assurance Framework

Purpose

The Integrated Quality Assurance Framework (iQAF) is designed to provide confidence that learners are achieving robust, credible and relevant qualifications and credentials that prepare them to meet iwi/hapū/whānau, employer, and community needs in New Zealand and internationally.

Quality assurance cornerstones

The framework has four central cornerstones that connect NZQA and Tertiary Education Organisation (TEO) roles and responsibilities:

-  **NZQA** puts in place strong quality assurance foundations.
-  **TEOs** have ownership of quality and quality improvement.
-  **NZQA** has an effective, integrated approach to verifying TEO quality.
-  **NZQA, standard setting bodies (SSBs), education providers, and other agencies** work together to ensure system outcomes are achieved.

Enablers

Data and insights, respectful and collaborative relationships, and a risk-informed approach build on the four quality assurance cornerstones and enable NZQA to apply its regulatory levers.

Levers

NZQA applies seven levers collectively to provide assurance that quality assurance is integrated and tailored to the context and performance of every TEO. The levers are **set rules, educate and inform, approve, TEO review, monitor, compliance and enforcement, system performance and improvement**.

System performance and improvement

NZQA, TEOs, and others share data and insights to understand and improve system performance, and promote excellence and innovation.

Set rules

NZQA Rules reflect the policy intent and are easy to access and understand.

Educate and inform

NZQA shares information and insights to support TEOs to develop capability and make informed decisions aligned with Rules and good practice.

Approve

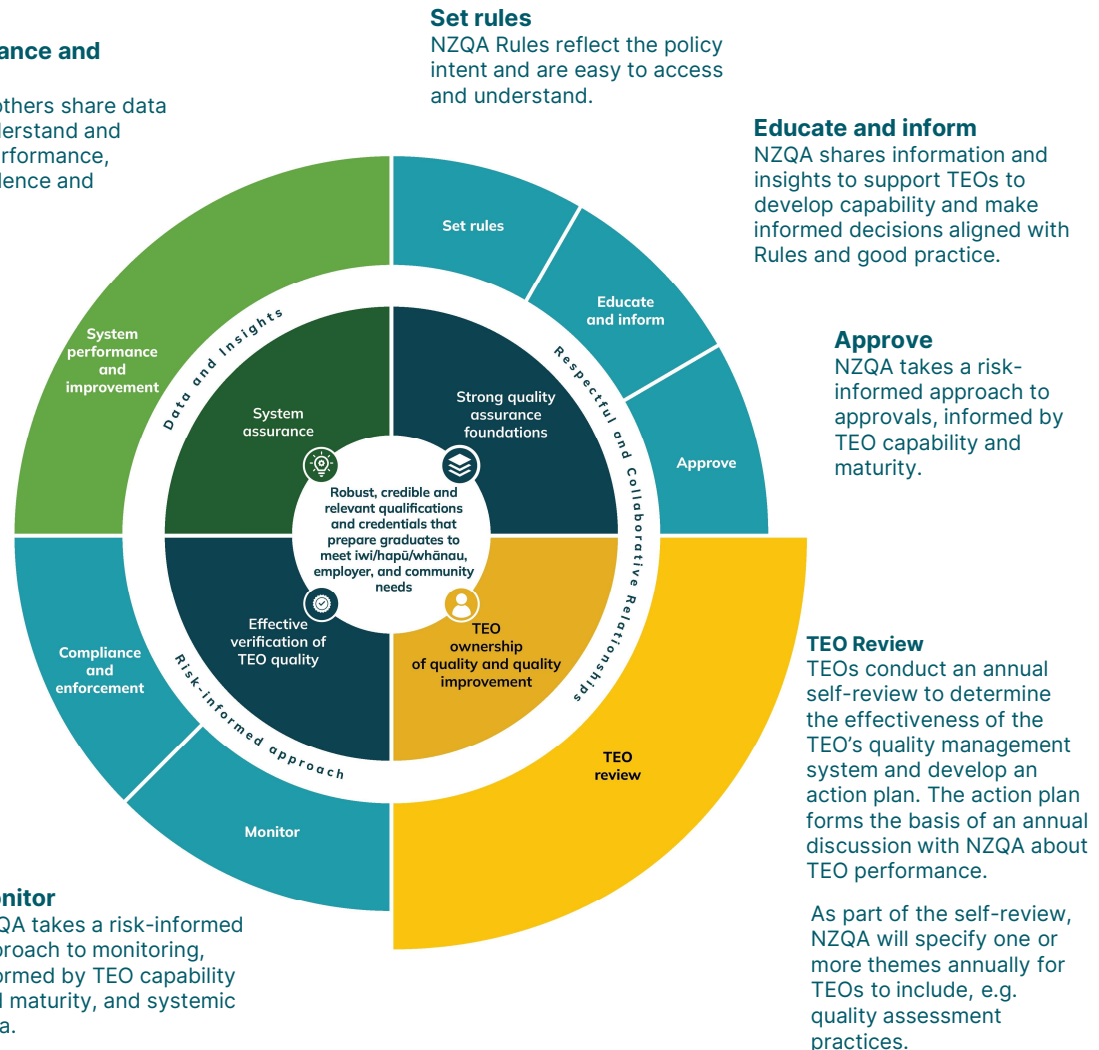
NZQA takes a risk-informed approach to approvals, informed by TEO capability and maturity.

Compliance and enforcement

NZQA has a transparent risk framework, that protects learners and is responsive to TEO capability and non-compliance. Enforcement action is fair and proportionate.

Monitor

NZQA takes a risk-informed approach to monitoring, informed by TEO capability and maturity, and systemic data.



TEO Review

TEOs conduct an annual self-review to determine the effectiveness of the TEO's quality management system and develop an action plan. The action plan forms the basis of an annual discussion with NZQA about TEO performance.

As part of the self-review, NZQA will specify one or more themes annually for TEOs to include, e.g. quality assessment practices.