



MĀORI QUALIFICATIONS SERVICES
NGĀ RATONGA TOHU MĀTAURANGA MĀORI

TĪKAROHIA TE MARAMA REALISE YOUR POTENTIAL

Assessment Support Material

REO MĀORI

Te Pōkaitahi Reo (Rumaki, Reo Rua)

Kaupae 3 | 60 Credits

| | |
|-----------------------|--|
| Ingoa Name | |
| Kura School | |
| Kaiwhakawā Assessor | |
| NSN Number | |

~ Pukapuka Aromatawai ā te Ākonga
– Ākonga Assessment Booklet



NEW ZEALAND QUALIFICATIONS AUTHORITY
MANA TOHU MĀTAURANGA O AOTEAROA

QUALIFY

Tēnā koe,

Te Pōkaitahi Reo (Rumaki, Reo Rua) Te Kaupae 3 - New Zealand Certificate in Te Reo (Immersion, Bilingual) (Level 3 - 60 Credits)

This is an integrated assessment booklet. The assessment tasks (Tūmahi) cover all the specific requirements for the following Mātāpono (Principles) outlined in the qualification:

The assessment tasks (Tūmahi) also cover the unit standards (Tīpako/Paearu Mahi) outlined in the following domains:

MANA REO

Kawe i te reo, ki tōna taumata o waenga, i roto i ētahi horopaki kua tohua, me te whakapakari i te mātauranga, me te whakaaronui ki te mana o te reo hei tohu i te mana reo.

(15 ngā whiwhinga)

Use te reo at an intermediate level in selected contexts to develop a growing knowledge base of, and an emerging respect for te reo, as an expression of mana reo.

MANA AO TŪROA

Kawe i te reo, ki tōna taumata o waenga, ki te whakatutuki i ētahi atu i ngā horopaki kua āta tohua mā roto atu i ngā mātāpono hei tohu i te mana ao tūroa.

(15 ngā whiwhinga)

Use te reo Māori at an intermediate level to achieve tasks and guide others in specified contexts as an expression of mana ao tūroa.

MANA TANGATA

Kawe i ngā kupu Māori, i ngā hanganga wetereo hoki ki tōna taumata tūāpapa mā roto atu i ngā mātāpono hei tohu i te mana tangata.

(15 ngā whiwhinga)

Use te reo Māori vocabulary and grammatical structures at a basic level as an expression of mana tangata.

MANA WHENUA

Kawe i te reo tūāpapa hei kōrero i ōna ake hononga ki te whenua, ki te taiao hoki hei whakaputanga i te mana whenua.

(15 ngā whiwhinga)

Use te reo Māori at an intermediate level to show an understanding of their connections to the land and the environment, prominent places, people, histories and stories, as an expression of mana whenua.

| Kōrero | Pānui | Tuhituhi | Whakarongo |
|---------|---------|----------|------------|
| • 31614 | • 31622 | • 31630 | • 31638 |
| • 31615 | • 31623 | • 31631 | • 31639 |
| • 31616 | • 31624 | • 31632 | • 31640 |
| • 31617 | • 31625 | • 31633 | • 31641 |

For a full breakdown of unit standards, please refer to the following link and click on each domain:

<https://www.nzqa.govt.nz/framework/explore/sub-field.do?frameworkId=76154>

Assessment Criteria

All tasks must be completed in te reo Māori. There are **FOUR** tūmahi that you must complete correctly to gain the credits for these unit standards.

- Tūmahi 1 - Tōku Hapū
- Tūmahi 2 - He Haurongo o te Tangata
- Tūmahi 3 - He Pūrākau
- Tūmahi 4 - Te Taiao

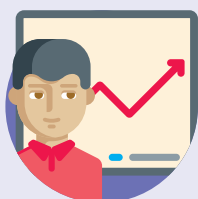
You are required to:



Read and research



Listen and answer questions



Research and present research to an audience



Prepare and present a speech



Compile and gather information

- You may be expected to work individually, in pairs or in a group. Your kaiako will tell you more about this.
- Your kaiako will also discuss the length of time you have to complete these aromatawai.
- **PLEASE** remember to reference where you get your information from. Your kaiako will also discuss this with you.

T1 Tōku Hapū

- E toru ngā ngohe mō tēnei Tūmahi:
- **Ngohe 1:** He kōrero ā-waha, he tuhituhinga
- **Ngohe 2:** He mahi whakarongo, he tuhituhi
- **Ngohe 3** - He mahi whakarongo, he kōrerorero

Ngohe 1: Mahi Kōrero

- Whakaritea tētahi whakaaturanga hei whakaatu ki ō hoa me tō kaiako. Ka kōrero koe i ngā mea e taunga ana, ā, e tauhou ana ki a koe. Ko te kaupapa o tāu kōrero, ko tou hapū. Me whakauru i ngā kaupapa e whai ake nei;
- Tētahi mihi ki te kaiako me te hunga whakarongo
- Whakaingoatia tāu whakaaturanga
- Whakarite i tētahi mahere hinengaro hei whiriwhiri whakaaro mō te whakaaturanga
- Tuhia he kupu arataki (ariā matua), he tātū kōrero me tētahi whakakapinga
- Kia rua ngā whakataukī, tētahi e taunga ana, tētahi e tauhou ana ki a koe nō tāu iwi, hapū ranei
- Te whakamārama i ngā kīwaha e rua, tētahi e taunga ana, tētahi e tauhou ana ki a koe e hangai tonu ana ki tou hapū, iwi rānei
- Tuhia ōu wheako whaiaro ō tōu rohe, te marae, te kāinga, me tōu whānau
- Tuhia ōu wheako whaiaro mō tētahi umanga e tautoko ana i tōu hapū, iwi rānei
- Ētahi waiata, ruri rānei e taunga ana, e tauhou ana ki a koe nō tāu hapū, iwi, rānei

He tohutohu anō

- *Kia neke atu i te toru meneti te roa o tēnei kōrero*
- *Hoatu tētahi kape ki tōu kaiako.*

HE KŌRERO ANŌ HEI ĀWHINA:

- *You can be as creative as you like by using photo's, flash cards, digital media or a digital multimedia presentation i.e. poster, PowerPoint, Padlet etc.*
- *You can practice your presentation by recording yourself on your own digital device*
- *Remember, your kōrero will be recorded by your kaiako.*

TŪMĀHI 1

Tuhia āu kōrero ki raro nei:



TŪMĀHI

Ngohe 2: He Mahi Whakarongo He Tuhituhi

Rapua he hoa mahi māu. Me āta whakarongo ki tō hoa e kōrero ana mō tōna hapū. Kātahi whakautua ngā pātai ki raro iho nei i te reo Māori. Tuhia ngā whakautu roa.

HE WHAKATAUIRA

| <i>Tuhia te ingoa o tō hoa</i> | |
|--|--|
| 1. Ko wai te ingoa o tōna kōrero? | |
| 2. Ko wai tōna maunga? | |
| 3. Ko wai tōna marae? | |
| 4. Ko wai te whare tupuna? | |
| 5. Ko wai te wharekai? | |
| 6. Ko wai te/ ngā waka? | |
| 7. Ko wai ētahi o ōna hapū e honohono ana ki tōna marae? | |
| 8. Tautuhia tētahi whakataukī no tōna hapū? | |
| 9. Tautuhia tētahi kīwaha no tōna hapū? | |
| 10. He aha ōna wheako whaiaro mō tōna rohe, marae, kāinga, whānau? | |
| 11. He aha ōna wheako whaiaro mō tētahi umanga e tautoko ana i tōna hapū? | |
| 12. Whakawhitiwhiti kōrero: He aha ngā mea e tau hou ana ki tā korua kōrero e hangai tonu ana ki tōu ake hapū, iwi rānei | |

TŪMAHI 1

Ngohe 3: He Mahi Whakarongo He Tuhituhi He Kōrerorero

Rapua kia rua ngā hoa mahi māu. Ka kōwhiri kia toru ngā pātai e hāngai ana ki ngā kōrero mō ō rāua hapū. Ka pātai atu tētahi ki tētahi, kātahi ka tuhia ngā pātai me ngā whakautu

HE WHAKATAUIRA

| <i>Hoa Tuatahi: Merepuku</i> | |
|--|--------------|
| Ngā pātai | Ngā whakautu |
| 1. He aha tētahi whakataukī nō tōna hapū / iwi rānei? | |
| 2. He aha tētahi kīwaha nō tōna hapū/ iwi rānei? | |
| 3. He aha tētahi mahi o te whānau mō tōna hapū/ iwi rānei? | |

| <i>Hoa Tuarua:K atarina</i> | |
|---|--------------|
| Ngā pātai | Ngā whakautu |
| 1. Ko wai ngā hapū e honohono ana ki tōu marae? | |
| 2. Ko wai tōu moana? | |
| 3. Ko wai tōu waka? | |

References:

<https://www.terarawa.iwi.nz/history/history-of-iwi>

<https://www.terarawa.iwi.nz/nga-marae-o-te-rarawa/>

Te Rūnanga o Te Rarawa. (Nov 2017). He Manu Rongo Ngā waiata o Te Rarawa. Te Rūnanga o Te Rarawa.



TŪMAHI

T2 He Haurongo o te Tangata

Ngohe 1: He Whakaaturanga

E rua ngā ngohe mō tēnei Tūmahi.

- **Ngohe 1:** He Whakaaturanga
- **Ngohe 2:** He Mahi Whakarongo

Rangahaua tētahi tangata nō tōu ake wāhi noho hapori rānei kia tuhituhi ai koe i tētahi **haurongo** mō taua tangata. Kātahi ka whakaatungia ōu haurongo ki ō hoa me tō kaiako.

- Tētahi mihi ki tō kaiako me te hunga whakarongo.
- Whakamārama mai i ngā āhuatanga o te tangata nāu anō i rangahau.
 - Ko wai ia? Nō hea ia? Kei hea ia e noho ana?
 - I whānau mai ia i hea? Nōnahea ia i whānau mai ai?
 - Ko tōna pepeha, tōna tāhuhu kōrero, tōna whakapapa rānei me tōna whānau?
 - Whakamāramahia i ngā āhua o tōna whenua tupu me tōna hau kāinga.
 - Whakamāramahia i ngā āhuatanga o tōna rohe.
 - He aha tāna mahi?
 - Whakamāramahia te take matua i whiriwhiri ai koe i tēnei tangata hei kaupapa kōrero mō tāu haurongo?
 - Me whakauru kia toru ngā momo kōrero whakanikoniko hei kīnaki i tāu kōrero. Hei tauira: he kīrehu, he kīwaha, he pepeha, he whakataukī whakatauākī hoki.
 - He kōrero whakakapi.
- Kia 4-5 meneti te roa o te kōrero.
- Kia kaha te whakamahi i ngā momo hangarau matihiko, ngā whakaahua, te pae pāpāho pāpori rānei hei whakaniko i tāu whakaaturanga.
- Me whakauru koe i ngā tohutoro.
- Me hoatu te kape tuhinga ki tō kaiako.

TŪMĀHI 2

Ngohe 1: He Whakaaturanga

Tuhia āu pitopito kōrero mō tāu whakaaturanga ki raro nei:

Kaua e wareware i ngā tohutoro. Kia kaha rā!

TŪMACHI 2

Ngohe 2: He Mahi Whakarongo

Me whiriwhiri kia rua ngā hoa mahi. Me āta whakarongo ki ā rāua kōrero mō te haurongo o te tangata. Kātahi, whakautua ngā pātai ki raro iho nei. Tuhia ngā whakautu roa.

HE WHAKATAUIRA

| | |
|---|--|
| <i>Tuhia te ingoa o tō hoa</i> | |
| Ko wai te tangata? | |
| Nō hea ia? | |
| Ināhea ia whānau mai ai? | |
| He aha tōna pepeha, whakapapa rānei? | |
| He aha tōna pepeha, whakapapa rānei? | |
| Tētahi āhua o tōna whenua tupu? | |
| He aha tāna mahi? | |
| Tuhia he whakataukī, whakatauākī rānei. | |
| He kōrero whakanikoniko | |

| | |
|---------------------------------------|--|
| <i>Tuhia te ingoa o tō hoa</i> | |
| Ko wai te tangata? | |
| Nō hea ia? | |
| Ināhea ia whānau mai ai? | |
| He aha tōna pepeha, whakapapa rānei? | |
| He aha tōna pepeha, whakapapa rānei? | |
| Tētahi āhua o tōna whenua tupu? | |

TŪMAHI 2

| | |
|---|--|
| He aha tāna mahi? | |
| Tuhia he whakataukī, whakatauākī rānei. | |
| He kōrero whakanikoniko | |

Whai muri i ngā kōrero a ō hoa, me tuku tētahi pātai ki a rāua. Tuhia ngā pātai me ā rāua whakautu ki raro iho nei.

HOA TUATAHI

| | |
|--------------------------------|--|
| <i>Tuhia te ingoa o tō hoa</i> | |
| Patai | |
| Whakautu | |

HOA TUARUA

| | |
|--------------------------------|--|
| <i>Tuhia te ingoa o tō hoa</i> | |
| Patai | |
| Whakautu | |



TŪMAHI

| | |
|-----------------|--|
| Ko Rona: | <i>Hei aha e Rere! Kua pau te wai. Mō te ata ahau haere ai ki te puna ki te whakakāi i ā tātou tahā.</i> |
| Ko Rerekohu: | <i>[kua tata te tangi]. E mā, kei te hiainu ahau.</i> |
| Ko Rona: | <i>[kua āhua pukuriri ināiane]. E moe, e Rere!</i> |
| Ko Rerekohu: | <i>[kua tangi ināiane]. E mā, kei te hiainu wai ahau.</i> |
| Ko Rona: | <i>Auē, te tamaiti nei! Kāore he wai, e Rere.</i> |
| Ko Hina: | <i>Turituri e Rere! Kei te hiamoe mātou!</i> |
| Ko Rerekohu: | <i>[kua tino tangi ināiane]. E mā . . . tīkina ... he wai . . . mōku!</i> |
| Ko Rona: | <i>Ākuanei koe patua, ai! Ka mutu te tamaiti tangitangi ko koe! He pōuri rawa a waho mō te haere ki te puna. Ka tūtuki noa iho ahau ki ngā rākau, ka pakaru ngā tahā. E moe!</i> |
| Ko Rerekohu: | <i>[me te tangi anō]. E mā, kei te hiainu wai ahau.</i> |
| Ko Rona: | <i>Auē, kāti! Ka haere ahau ināiane ki te tiki wai mōu. Ahakoa taku matakū ki te pō, ahakoa tūtuki ahau ki te rākau, ahakoa pakaru atu ngā tahā, ka haere ahau. Ahakoa mate atu ahau, ka haere ahau ki te tiki wai mōu. Ai, taku whakatakariri ki a koe! Ka puta ia ki waho.</i> |
| Mā te kaipānui: | <i>I waho, e tiaho ana te marama, engari he nui ngā kapua kei te rangi. Ka tīmata a Rona i tōna haere, me te mau he tahā i tētahi ringa, he kete i tētahi. He ara uaua tēnei, he ara kino mō te haere i te pō. Nā te mārama o te marama ka āhua pai. Kātahi ka āraia te marama e te kapua, ka pōuri. Ka tūtuki a Rona ki ngā pakiaka i runga i te ara, ka hinga ki raro.</i> |
| Ko Rona: | <i>Pōkokōhua koe, e te marama! Mahue tō whiti mai hei whakamārama i te ara nei ka huna kē koe i muri i te kapua. [Ka tū ia ki runga.] Titiro, kua whara taku waewae i a koe! Pōkokōhua e!</i> |
| Ko te Marama: | <i>Kia tūpato, e hine. Kia ngāwari ngā kōrero.</i> |
| Ko Rona: | <i>Hei aha te kōrero mai ki ahau! Tiaho mai kia kite ai ahau i te ara. Pōkokōhua e, whara noa iho ahau i a koe!</i> |
| Ko te Marama: | <i>E kī, e kī! Ka kanga mai koe ki ahau, te Marama, tō rangatira. Inā tō kail! Ka rere mai te marama ki te hoʻu i a Rona.</i> |
| Ko Rona: | <i>Aue-e! Haere atu! Haere atu! Ka hoʻu ia ki te rākau ngaio, ka pupuri.</i> |
| Ko te Marama: | <i>Kanga mai anō! Ka kāwhakina koe e ahau ki te rangi, hei taurekareka māku.</i> |
| Ko Rona: | <i>E te Marama e, aroha mai ki aku tamariki! Haere atu! Ka whawhai atu a ia.</i> |



WHĀKAITAHI REO



TŪMĀHI

| | |
|-----------------|---|
| Ko te Marama: | Nāu te kanga, nāku te whakautu. Haere mai. Ka mauria koe e ahau ināiane! Kei te mau tonu a Rona ki te ngaio, me te pupuri anō i te kete, i te tahā. |
| Ko Rona: | Aue-e! Ahau e-e! Kāua ahau e mauria ki te rangi! Aroha mai! I makere noa iho te kōrero. Ka toro atu ngā ringa o te marama, ka tangohia ake a Rona, te rākau ngaio, te tahā, me te kete. Ka mauria ki te rangi. |
| Ko te Marama | [ka kōrero i te reo pēnei i te whatitiri nei]. Titiro mai e te ao, ki tēnei wahine i kanga nei i ahau. Titiro mai! Kei wareware koutou he atua ahau! |
| Mā te kaiṗānui: | I muri iho ka rata anō te marama, ka tiaho mai anō. Kei ngā pō atarau, kei ngā pō rākau-nui o te marama, e kitea atu ana a Rona, me tana tahā, me te rākau ngaio e tū ana i tana taha. Kore rawa tētahi wahine, i muri iho, i kanga ki te marama. |

Ngohe 2: He Kupu Ōrite/Mahi Whakakāhore

Pānuihia anōtia te pūrākau mō Rona. Kātahi, kimihia te/ngā kupu ōrite ki ēnei ki raro iho nei:

| | |
|-------------|--|
| makere noa | |
| matike | |
| taurekareka | |
| tahā | |
| tūtuki | |
| pōkokōhua | |
| kāwhakina | |
| pakiaka | |
| kapua | |

Whakakāhoretia ngā rerenga kōrero i raro nā, kātahi whakapākehātia tāu whakautu.

- Kei te whakatikatika a Rona i tōna moenga.

1. Ka haere ahau ināiane ki te tiki wai mōu.

2. Titiro, kua whara taku waewae i a koel

4. Nāu ta kanga, nāku te whakautu.

Ngohe 3: He Mahi Whakarongo

Mā te kaiako e **pānui atu** i te pūrākau mō Rona. Ko tāu mahi, me **āta whakarongo** kātahi, whakautua ngā pātai e whai ake nei. Kia **rua ngā** pānuitanga.

1. He aha a Rerekohu i tangitangi ai?

2. Ki tō whakaaro, kei hea te pāpā a Tama mā?

3. Whakamārama mai i te reo Māori tonu te tikanga o te kupu 'pōkokōhua'.

4. He aha te marama i haria ai a Rona ki tōna taha?

5. I a Rona e haere ana ki te tiki wai mō Rerekohu ka aha?

6. He aha a Rona i kangakanga ai ki te marama?

7. He aha ngā mea e toru e haria e Rona ki te marama?



TŪMARI

8. Kua whara te waewae a Rona i te aha?

9. Ki te āta titiro koe ki te marama e tiaho ana, ka aha?

10. Ki tō whakaaro, he aha te tino kaupapa ako kei roto i tēnei pūrākau?

Ngohe 4: He Whakarāpopototanga

Tuhia tētahi **whakarāpopototanga** mō Rona ki ō ake kupu. Me whakauru koe i te kaupapa ako o te pūrākau nei.

Kaua e heke iho i te rua rau kupu.

T4 Te Taiao

Ngohe 1: He Mahi Pānui | He Mahi Tuhituhi

- E rua ngā ngohe mō tēnei tūmahi **Ngohe 1:** He mahi pānui, he mahi tuhituhi
- **Ngohe 2:** He kōrero, he mahi whakarongo

Ka rangahau koe i ngā pūrongo kōrero e hāngai ana ki tētahi kaupapa e pā ana ki tētahi tangata me tāna mahi tiaki taiao i ēnei wā. Kātahi ka whai i ngā tohutohu i raro iho nei;

1. Me kohikohi kia rima ngā pūrongo kōrero.
2. Whakarōpūhia ngā pūrongo kōrero.
3. Tuhia ngā tohutoro mō ia pūrongo kōrero.
4. Whakarāpopoto i ngā pūrongo kōrero.
5. Ka tautuhi i tētahi whakataukī, whakatauākī, pepeha e hāngai ana ki te kaupapa (Kia toru ngā nuka reo).



TŪMĀHI

Pūrongo 1



Pūrongo 2



TŪMĀHI 4

Pūrongo 3

Pūrongo 4



TŪMĀHI

Pūrongo 5



TŪMAHI 4

He kaupapa iti hei whakaaro mōu

A few things for you to think about

- You will be recorded visually for the kōrero components of these aromatawai tasks.
- Your kaiako will discuss how and when this will occur.
- If you have any pātai, or are unsure about anything, kōrero ki tō kaiako. Kia kaha!

Referencing

These aromatawai require the ākonga to reference his/her information sources. For the purposes of these tasks, the following are examples of reference styles:

1 **Book with one author**

King, M. (2000). *Wrestling with the angel: A life of Janet Frame*. Auckland, New Zealand: Viking.

2 **Course handout/Lecture notes (electronic version)**

Archard, S., Merry, R., & Nicholson, C. (2011). Karakia and waiata [PowerPoint slides]. Retrieved from TEPS757-11B (NET): Communities of Learners website: <http://elearn.waikato.ac.nz/mod/resource/view.php?id=174650>.

3 **Film/TV**

Māori Television (Producer). (2016). Iwi Anthems, Series 2 Episode 5 [video file]. Retrieved from: <http://www.maoritelevision.com/tv/shows/iwi-anthems/S02E005/iwi-anthems-series-2-episode-5>.

4 **Magazine/Newspaper article – popular/trade/general interest**

Fox, D. (2015, 15 September). Viewpoint: Not one more acre. *Mana*. Retrieved from: <http://www.mana.co.nz/heritage/viewpoint.html>.

5 **Personal Communication (letters, telephone conversations, emails, interviews, private social networking)**

N.B. No reference list entry as the information is not recoverable.

6 **Webpage**

M. P. K. Sorrenson. 'Ngata, Apirana Turupa', Dictionary of New Zealand Biography, first published in 1996. Te Ara - the Encyclopedia of New Zealand. Retrieved from: <https://teara.govt.nz/en/biographies/3n5/ngata-apirana-turupa> (accessed 9 April 2019)

Ākonga Overall Achievement

| Tūmahi 1 - Tōku Hapū | | Mātāpono | Wāhanga | Tīpako/Paearu Mahi | Kua tutuki | Kāore anō |
|--|---------------|------------------|--|--------------------|------------|-----------|
| Ngohe 1: He Kōrero ā waha, He Tuhituhinga | Mana Reo | Kōrero 31614 | 1. 1 1.1, 1.2, 1.4 2. 2.1, 2.2, 2.4 | | | |
| | | Tuhituhi 31630 | 1. 1 1.1, 1.2, 1.3 | | | |
| | Mana Ao Tūroa | Kōrero 31615 | 1. 1 1.1, 1.2, 1.3 | | | |
| | Mana Tangata | Tuhituhi 31631 | 1. 1 1.1, 1.2, 1.3 | | | |
| | | Tuhituhi 31632 | 1. 1 1.1 2. 2.1 | | | |
| Ngohe 2: He Mahi Whakarongo, He Tuhituhi | Mana Reo | Whakarongo 31638 | 1. 1. 1.3, 1.4, 1.5 | | | |
| | Mana Ao Tūroa | Whakarongo 31639 | 1. 1. 1.1, 1.2, 1.3, 1.4 2. 2.1, 2.2 | | | |
| | Mana Tangata | Whakarongo 31640 | 1. 1 1.1, 1.2, 1.3 | | | |
| Ngohe 3: He Mahi Whakarongo, He Kōrerorero | Kōrero | Kōrero | 1. 1. 1.3 2. 2.3 | | | |
| | Mana Ao Tūroa | Kōrero 31616 | 1. 2. 2.1, 2.2, 2.3 | | | |
| | Mana Tangata | Whakarongo 31617 | 1. 2. 2.1, 2.2 | | | |
| Tūmahi 2 - He Haurongo o te Tangata | | | | | | |
| Ngohe 1: He Whakaaturanga | Mana Tangata | Kōrero 31616 | 1. 1 1.1, 1.2, 1.3 | | | |
| | | Tuhituhi 31632 | 1. 1 1.1, 1.2 2. 2.2, 2.3, 2.4 | | | |
| | Mana Whenua | Kōrero 31617 | 1. 1 1.1, 1.2, 1.3 | | | |
| | | Tuhituhi 31633 | 1. 1 1.1, 1.2 | | | |
| Ngohe 2: He Mahi Whakarongo | Mana Whenua | Whakarongo 1641 | 1. 1 1.1, 1.2 2. 2.1, 2.2, 2.3 | | | |
| | Mana Ao Tūroa | Tuhituhi 31631 | 1. 2. 2.1, 2.2 | | | |

Tūmahi 3 - He Pūrākau

| | | | | |
|--|---------------|------------------|-----------------------------------|--|
| Ngohe 1: He Mahi Pānui ā waha mō Rona | Mana Reo | Pānui 31622 | 1. 1 1.1, 1.2, 1.3, 1.4, 1.5, 1.6 | |
| | Mana Ao Tūroa | Pānui 31623 | 1. 1.1.1, 1.2, 1.3 | |
| | Mana Whenua | Pānui 31625 | 1. 3.3.2 | |
| Ngohe 2: He Kupu Ōrite, He Mahi Whakakāhore | Mana Tangata | Tuhituhi 31623 | 1. 2.2.3 | |
| | Mana Reo | Tuhituhi 31630 | 1. 1.1.3, 1.5 | |
| Ngohe 3: Mahi Tuhituhi | Mana Reo | Whakarongo 31638 | 1. 2.2.1, 2.2, 2.3, 2.4 | |
| | Mana Ao Tūroa | Tuhituhi 31623 | 1. 2.2.1, 2.2 | |
| Ngohe 4 He Whakarāpopototanga | Mana Reo | Tuhituhi 31630 | 1. 1.1.4 | |
| | Mana Whenua | Pānui 31633 | 1. 2.2.1, 2.2, 2.3 | |

Tūmahi 4 -Te Taiao

| | | | | |
|---|---------------|------------------|--|--|
| Ngohe 1: He Mahi Pānui, He Mahi Tuhituhi | Mana Whenua | Pānui 31625 | 1. 1 1.1, 1.2, 1.3 2.2.1, 2.2, 2.3 3.3.1 | |
| | Mana Tangata | Pānui 31624 | 1. 1 1.1, 1.2 | |
| Ngohe 2: He Kōrero, He Mahi Whakarongo | Mana Tangata | Pānui 31624 | 1. 2.2.1, 2.2, 2.3 | |
| | Mana Reo | Whakarongo 31640 | 1. 2.2.1, 2.2, 2.3, 2.4 | |
| | Mana Reo | Whakarongo 31638 | 1. 1.1.1, 1.2 | |
| | Mana Ao Tūroa | Kōrero 31615 | 1. 2.2.1, 2.2, 2.3, 2.4 | |
| | Mana Ao Tūroa | Tuhituhi 31631 | 1. 2.2.3 | |
| | | Pānui 31623 | 1. 2.2.4 | |

Te Whāinga Matua

Kua tutuki te ākongā?

| | |
|---------------|--|
| Āe Achieved | |
|---------------|--|

| | |
|----------------------------|--|
| Kāore anō Yet to Achieve | |
|----------------------------|--|

| | | | |
|-------------------|--|-------------------|--|
| Ingoa o te Ākongā | | Ingoa o te Kaiako | |
|-------------------|--|-------------------|--|

| | | | |
|---------------------|--|---------------------|--|
| Waitohu o te Ākongā | | Waitohu o te Kaiako | |
|---------------------|--|---------------------|--|

| | |
|----------------|--|
| Te Rā Whakaoti | |
|----------------|--|

.....

.....

.....

| | |
|-----------------------------------|--|
| Te rā hei tuku atu anō (resubmit) | |
|-----------------------------------|--|

| | |
|---------------|--|
| Āe Achieved | |
|---------------|--|

| | |
|----------------------------|--|
| Kāore anō Yet to Achieve | |
|----------------------------|--|