

## TAONGA PUORO

### UNIT STANDARD 30236 (VERSION 2)

HE MAURI PUORO, HE MAURI ORA!

Demonstrate knowledge of taonga puoro in relation to the Māori origin of sound and ngā atua Māori

(Level 1, Credits 6)

# ĀKONGA BOOKLET

Name/ Ingoa	
Provider/ School/ Kura	
Assessor/ Kaiako	
NSN Number	

'Te manu ka kai i te miro, nōna te ngahere  
Te manu ka kai i te mātauranga, nōna te ao'

—

*'The bird that partakes of the berry, his is the forest.  
The bird that partakes of knowledge, his is the world'*

Tēnā koe

This is your assessment booklet for Taonga Puoro unit standard 30236, Demonstrate knowledge of taonga puoro in relation to the Māori origin of sound and ngā atua Māori.

## Assessment criteria

Paetae/Achieved	Kaiaka/Achievement with Merit	Kairangi/Achievement with Excellence
Demonstrate knowledge of taonga puoro in relation to the Māori origin of sound and ngā atua Māori.	Demonstrate in-depth knowledge of taonga puoro in relation to the Māori origin of sound and ngā atua Māori.	Demonstrate comprehensive knowledge of taonga puoro in relation to the Māori origin of sound and ngā atua Māori.

There is ONE (1) assessment task for this standard that you must correctly complete to gain credits for this standard. The grades for this assessment include Paetae (Achieved), Kaiaka (Merit) or Kairangi (Excellence). Your grade will depend on how well you research and answer the questions.

## The task is to

- describe the origin of sound in terms of ngā atua Māori. Atua Māori may include but are not limited to Papatūānuku, Ranginui, Tānemāhuta, Tangaroa, Tāwhirimātea, Hineraukatauri, Hineteiwaiwa, Hinepūtehue; evidence of three is required;
- identify the whānau of taonga puoro associated with ngā atua Māori. Atua Māori may include but are not limited to Papatūānuku, Ranginui, Tānemāhuta, Tangaroa, Tāwhirimātea, Hineraukatauri, Hineteiwaiwa, Hinepūtehue; evidence of three is required;
- identify taonga puoro from each whānau, and
- describe the reo (voices) of taonga puoro (evidence of three whānau with at least two taonga puoro from each is required).

Your kaiako will discuss the length of time you have to complete this. **PLEASE** remember to reference where you get your information from for this task. Your kaiako will discuss this with you.

## Authenticity

As per NZQA requirements:

- all work submitted for assessment must be produced by you
- the assessor will consider (and manage) the potential for work to have been copied, borrowed from another ākonga, photocopied from a book, or downloaded from the internet.

You may work with and learn from others to gather information from a variety of sources. However, the assessor must be clear that the work to be assessed has been processed and produced by you. To help manage authenticity of your work, where you are asked to complete any written tasks, you will be asked to use your own words as well as provide reference/s for your information.

If you have any pātai, or are unsure about anything, kōrero ki tō kaiako.

For further information, please refer to the following link:

<https://www.nzqa.govt.nz/providers-partners/assessment-and-moderation-of-standards/assessment-of-standards/generic-resources/authenticity/>

## ĀKONGA ASSESSMENT & TASK SHEETS

Name

NSN #

**Outcome 1 Demonstrate knowledge of taonga puoro in relation to the Māori origin of sound and ngā atua Māori.**

### Assessment Task 1

**Demonstrate knowledge of taonga puoro in relation to the Māori origin of sound and ngā atua Māori in terms of:**

- describe the origin of sound in terms of ngā atua Māori. Atua Māori may include but are not limited to Papatūānuku, Ranginui, Tānemāhuta, Tangaroa, Tāwhirimātea, Hineraukauri, Hineteiwaiwa, Hinepūtehue; evidence of three is required;
- identify the whānau of taonga puoro associated with ngā atua Māori. Atua Māori may include but are not limited to Papatūānuku, Ranginui, Tānemāhuta, Tangaroa, Tāwhirimātea, Hineraukauri, Hineteiwaiwa, Hinepūtehue; evidence of three is required;
- identify taonga puoro from each whānau, and
- describe the reo (voices) of taonga puoro (evidence of three whānau with at least two taonga puoro from each is required).

You may use the attached sheet to record your answers and/or use a range of other techniques to present your descriptions – e.g. PowerPoint, mind maps, posters, drawings etc.

**You must present information in your own words, and all sources of information must be acknowledged..**



## Demonstrate knowledge of taonga puoro in relation to the Māori origin of sound and ngā atua Māori.

DESCRIBE THE ORIGIN OF SOUND IN TERMS OF NGĀ ATUA MĀORI:

DESCRIBE THE WHĀNAU OF TAONGA PUORO ASSOCIATED WITH AT LEAST **THREE** (3) ATUA MĀORI, AND NAME AT LEAST **TWO** TAONGA PUORO FROM EACH WHĀNAU, AND DESCRIBE THEIR REO (VOICES).

ATUA 1:

NAME:

DESCRIBE THE WHĀNAU OF TAONGA PUORO:

TAONGA PUORO 1:

NAME:

DESCRIBE THE REO OF THE TAONGA PUORO:

TAONGA PUORO 2:

NAME:

DESCRIBE THE REO OF THE TAONGA PUORO:

ATUA 2:

NAME:

DESCRIBE THE WHĀNAU OF TAONGA PUORO:

TAONGA PUORO 1:

NAME:

DESCRIBE THE REO OF THE TAONGA PUORO:

TAONGA PUORO 2:

NAME:

DESCRIBE THE REO OF THE TAONGA PUORO:

ATUA 3:

NAME:

DESCRIBE THE WHĀNAU OF TAONGA PUORO:

TAONGA PUORO 1:

NAME:

DESCRIBE THE REO OF THE TAONGA PUORO:

TAONGA PUORO 2:

NAME:

DESCRIBE THE REO OF THE TAONGA PUORO:

# A few things for you to think about

## For Paetae/Achieved

Demonstrate knowledge of taonga puoro in relation to the Māori origin of sound and ngā atua Māori will be evidenced through:

- describing the origin of sound in terms of ngā atua Māori
- identifying the whānau of taonga puoro associated with ngā atua Māori
- identifying taonga puoro from each whānau, and
- describing the reo (voices) of taonga puoro.

## For Kaiaka/Merit

Demonstrating in-depth knowledge of taonga puoro in relation to the Māori origin of sound and ngā atua Māori will be evidenced through:

- describing the general reo of each of the taonga puoro whānau in depth, and linking them to the traditional kōrero pertaining to that whānau.

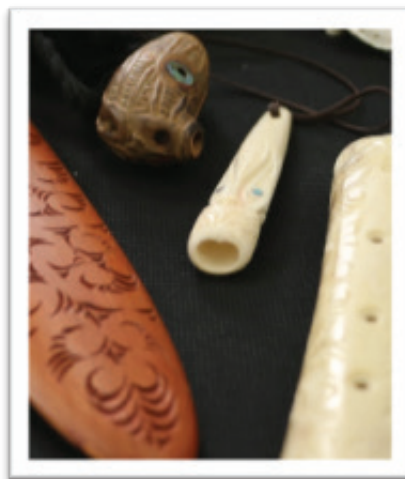
## For Kairangi/Excellence

Demonstrate comprehensive knowledge of taonga puoro in relation to the Māori origin of sound and ngā atua Māori will be evidenced through:

- describing the reo of each of the taonga within the taonga puoro whānau, and linking them to the traditional kōrero pertaining to that whānau.

If you have any pātai, or are unsure about anything, kōrero ki tō kaiako.

Kia kaha!



## Notes: