

TAONGA PUORO

HE MAURI PUORO, HE MAURI ORA!

UNIT STANDARD 30241 (VERSION 2)

Demonstrate knowledge of the traditional use of taonga puoro in accordance with tikanga

(Level 2, Credits 5)

ĀKONGA BOOKLET

Name/ Ingoa	
Provider/ School/ Kura	
Assessor/ Kaiako	
NSN Number	

'Te manu ka kai i te miro, nōna te ngahere
Te manu ka kai i te mātauranga, nōna te ao'

—

*'The bird that partakes of the berry, his is the forest.
The bird that partakes of knowledge, his is the world'*

This is your assessment booklet for Taonga Puoro unit standard 30241, Demonstrate knowledge of the traditional use of taonga puoro in accordance with tikanga.

Assessment criteria

Paetae/Achieved	Kaiaka/Achievement with Merit	Kairangi/Achievement with Excellence
Demonstrate knowledge of the traditional use of taonga puoro in accordance with tikanga.	Demonstrate in-depth knowledge of the traditional use of taonga puoro in accordance with tikanga.	Demonstrate comprehensive knowledge of the traditional use of taonga puoro in accordance with tikanga.

There is ONE (1) assessment task for this standard that you must correctly complete to gain credits for this standard. The grades for this assessment include Paetae (Achieved), Kaiaka (Merit) or Kairangi (Excellence). Your grade will depend on how well you research and answer the questions.

The task is:

Demonstrate knowledge of the traditional use of taonga puoro in accordance with tikanga. The traditional use of one taonga puoro from each whānau is described within a cultural ceremony or ritual practice. The whānau are Tāne, Tangaroa, Tāwhirimātea, Raukatauri, and Hinepūtehue. Identify and explain tikanga relevant to taonga puoro that are unique to iwi or hapū.

Your kaiako will discuss the length of time you have to complete this. **PLEASE** remember to reference where you get your information from for this task. Your kaiako will discuss this with you.

Authenticity

As per NZQA requirements:

- all work submitted for assessment must be produced by you
- the assessor will consider (and manage) the potential for work to have been copied, borrowed from another ākonga, photocopied from a book, or downloaded from the internet.

You may work with and learn from others to gather information from a variety of sources. However, the assessor must be clear that the work to be assessed has been processed and produced by you. To help manage authenticity of your work, where you are asked to complete any written tasks, you will be asked to use your own words as well as provide reference/s for your information.

If you have any pātai, or are unsure about anything, kōrero ki tō kaiako.

For further information, please refer to the following link:

<https://www.nzqa.govt.nz/providers-partners/assessment-and-moderation-of-standards/assessment-of-standards/generic-resources/authenticity/>

ĀKONGA ASSESSMENT & TASK SHEETS

Name

NSN #

Outcome 1 Demonstrate knowledge of the traditional use of taonga puoro in accordance with tikanga.

Range - cultural ceremonies or ritual practices may include but is not limited to – birth, tangihanga, pōwhiri, karakia and composition, rongoā, Matariki, Puanga, communication, whakangahau, weather, waiata;

evidence of one taonga puoro from each whānau taonga puoro stated below is required.

 LEVEL
2

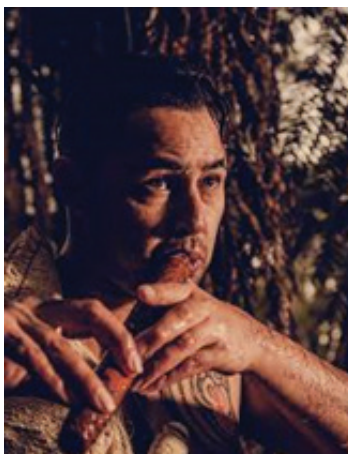
Assessment Task 1

Demonstrate knowledge of traditional use of taonga puoro in accordance with tikanga:

- the traditional use of one taonga puoro from each whānau is described within a cultural ceremony or ritual practice.
- the whānau are Tāne, Tangaroa, Tāwhirimātea, Hineraukatauri, and Hinepūtehue.
- Identify and explain tikanga relevant to taonga puoro that are unique to iwi or hapū.

You may use the attached sheet to record your answers (you will need one copy of the sheets for EACH taonga) and/or use a range of other techniques to present your descriptions e.g. PowerPoint, mind maps, posters, drawings etc.

You must present information in your own words, and all sources of information must be acknowledged.



Demonstrate knowledge of the traditional use of taonga puoro in accordance with tikanga.

DESCRIBE THE TRADITIONAL USE OF ONE TAONGA PUORO FROM TE WHĀNAU A TĀNE WITHIN A CULTURAL CEREMONY OR RITUAL PRACTICE.

DESCRIBE THE TRADITIONAL USE OF ONE TAONGA PUORO FROM TE WHĀNAU A TANGAROA WITHIN A CULTURAL CEREMONY OR RITUAL PRACTICE.

DESCRIBE THE TRADITIONAL USE OF ONE TAONGA PUORO FROM TE WHĀNAU A TĀWHIRIMĀTEA WITHIN A CULTURAL CEREMONY OR RITUAL PRACTICE.

L
E
V
E
L

2

DESCRIBE THE TRADITIONAL USE OF ONE TAONGA PUORO FROM TE WHĀNAU A HINERAUKATAURI WITHIN A CULTURAL CEREMONY OR RITUAL PRACTICE.

DESCRIBE THE TRADITIONAL USE OF ONE TAONGA PUORO FROM TE WHĀNAU A HINEPŪTEHUE WITHIN A CULTURAL CEREMONY OR RITUAL PRACTICE.

IDENTIFY AND EXPLAIN TIKANGA RELEVANT TO TAONGA PUORO THAT ARE UNIQUE TO IWI OR HAPŪ.

YOU MAY EXPAND THE BOXES IF REQUIRED, AND USE ADDITIONAL PAPER TO COMPLETE YOUR RESPONSES. ATTACH THEM TO THIS BOOKLET.

A few things for you to think about

For Paetae/Achieved

Demonstrate knowledge of the traditional use of taonga puoro in accordance with tikanga:

- the traditional use of one taonga puoro from each whānau is described within a cultural ceremony or ritual practice. The whānau are Tāne, Tangaroa, Tāwhirimātea, Hineraukatauri, and Hinepūtehue.

For Kaiaka/Merit

Demonstrate in-depth knowledge of the traditional use of taonga puoro in accordance with tikanga:

- explaining in-depth the tikanga practices associated with taonga puoro in accordance with iwi tradition
 - kua marama ki ngā tikanga e pā ana ki ngā taonga puoro ā iwi, ā hapū rānei
 - kua marama te whakam
 - ārama i ngā tikanga e pā ana ki ngā momo taonga puoro ā iwi, ā hapū rānei (identifying specific iwi or hapū tikanga relevant to taonga puoro).

For Kairangi/Excellence

Demonstrate comprehensive knowledge of the traditional use of taonga puoro in accordance with tikanga:

- comprehensively explaining the tikanga practices associated with taonga puoro in accordance with iwi tradition
 - kua matatau te whakamārama i ngā tikanga e pā ana ki ngā taonga puoro ā iwi, ā hapū (explaining tikanga relevant to taonga puoro that are unique to iwi or hapū).

If you have any pātai, or are unsure about anything, kōrero ki tō kaiako.

Kia kaha!