



MĀORI QUALIFICATIONS SERVICES
NGĀ RATONGA TOHU MĀTAURANGA MĀORI



TĪKAROHIA TE MARAMA REALISE YOUR POTENTIAL

Ngā Rauemi Aromatawai

TE ITI A TARANGA

Paerewa 32184 (Putanga 1)

Te whakaatu mōhio me te whakapuaki hoki i te rangatiratanga

Kaupae 3 | Whiwhinga 5



Ingoa	<input type="text"/>
Kura	<input type="text"/>
Kaiwhakawā	<input type="text"/>
Tau Ākonga (NSN)	<input type="text"/>

~ Pukapuka Aromatawai ā te Ākonga



NEW ZEALAND QUALIFICATIONS AUTHORITY
MANA TOHU MĀTAURANGA O AOTEAROA

QUALIFY

Tēnā koe

Anei tō pukapuka aromatawai mō te Paerewa, **32184 Rangatiratanga: Te whakaatu mōhio me te whakapuaki hoki i te rangatiratanga**

Ko ngā taumata o te paerewa nei ko te Paetae, te Kaiaka, te Kairangi me te Kāore i whiwhi.

Paearu aromatawai Paetae

Me taunaki mai ngā whakautu a te ākonga i ngā āhuatanga e whai ake nei:

- he whakaaturanga a ngā āhuatanga o te rangatiratanga e ai ki te oranga ā-tinana, ā-wairua, ā-hinengaro o te whānau
- he whakaaturanga o te rangatiratanga e ai ki ngā mahi hāpai i te oranga ā-tinana, ā-wairua, ā-hinengaro o te whānau
- he whakapuaki i te rangatiratanga o te nohoanga ā-whānau
- he whakapuaki i te rangatiratanga e whakatinana ana i ngā pūkenga pāhekoheko whāiti me ngā mōhioatanga e hāngai nei ki te horopaki.

Paearu aromatawai Kaiaka

Me taunaki mai ngā whakautu a te ākonga i ngā āhuatanga e whai ake nei:

- he hōhonu te whakaatu mōhio i te rangatiratanga
- he whakataurite, he whakatairite hoki i ngā āhuatanga o te rangatiratanga kei ngā tauira Māori tawhito, e ai ki te reo, ki ngā tikanga, ki te kawa anō hoki.

Paearu aromatawai Kairangi

Me taunaki mai ngā whakautu a te ākonga i ngā āhuatanga e whai ake nei:

- he matawhānui te whakaatu mōhio i te rangatiratanga
- he whakatairite i ngā whakapānga o te rangatiratanga ki te oranga ā-tinana, ā-wairua, ā-hinengaro o te whānau kei ngā tauira Māori tawhito e hāngai nei ki ngā korero tuku iho.

He pukapuka aromatawai tēnei me āna pepa mahi hei whakaoti i ngā tūmahi aromatawai. E takoto ana ngā pepa mahi hei āwhina ki te whai taunaki e tutuki pai ai hoki ngā ture o te paerewa.

Kia kaha ki te whakaoti tika i ngā mahi o te pukapuka nei kia tutuki pai ai āu mahi katoa mō te paerewa nei.

Kia ora mai anō.

Paearu Aromatawai

Me whakaoti tika i a koe ngā tūmahi aromatawai e RUA kia whai whiwhinga mō te paerewa nei.

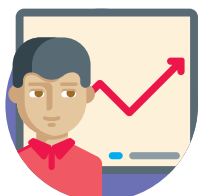
Me whakapau kaha hoki koe ki te :



PĀNUI me te rangahau



WHAKARONGO me te tuku pātai



WHAKARITE MAHI me te tuhi kōrero



WHAKARĀRANGI me te whakaemi kōrero tautoko



HOPU MAHI me te whakaatu ki tō kaiako

- Mā tō kaiako koe e tohutohu ai mō te roanga o te wā hei whakaoti i a koe ēnei tūmahi aromatawai katoa.
- **KIA MAUMAHARA** ki te whakarite rārangi tohutoro hei puna kōrero tautoko. Mā tō kaiako anō ēnei whakamārama e kōrero atu ki a koe.

Ingoa

Tau Ākonga (NSN)

Tūmahi 1 Pepa Mahi 1

Putanga 1 – Te whakaatu mōhio i te rangatiratanga.

Tūmahi aromatawai 1 – ka arotakengia te 1.1, 1.2

Me whakaahua mai ngā āhuatanga o te rangatiratanga e RUA e ai ki ngā mahi hāpai i te oranga ā tinana, ā wairua, ā hinengaro o te whānau

Me whakamārama mai i ngā āhuatanga o te rangatiratanga e RUA e hāpai nei i te oranga ā tinana, ā wairua, ā hinengaro o te whānau e ai ki ngā tikanga a te mana whenua.

Ko ngā āhuatanga pēnei i te ngākau mahaki, ngākau tapatahi, kanohi kai mātārae, ngākau pono, te whakawhanaungatanga me te kōtuitui.

Me taunaki mai i ngā āhuatanga e RUA.

Ko te hāpai i te oranga ā-whānau, ā-tinana, ā-hinengaro e ai ki te kapa haka, te hākinakina, te hui ahurei, te hui ahurei ā-whānau/ ā-hapū/ā-iwi hui, te wānanga, te pakihi, te hui taurima, te whakanui tangata/tāngata, tangihana

Me taunaki mai i ngā taura e RUA.

**E RUA NGĀ ĀHUATANGA O TE RANGATIRATANGA:
 E RUA NGĀ TAUIRA E WHAKAPUAKI ANA I TE RANGATIRATANGA:**

<p>Ka arotake tēnei tūmahi i ngā taunakitanga mō te Putanga 1 Paearu aromatawai 1.1, 1.2</p>	
<p>Paearu aromatawai Kaiaka</p> <p>He whakaaturanga e tautohu ana, e whakatārite ana i ngā pūkenga whati nō roto mai i ngā taurira Maori tawhito e ai ki ngā tikanga me ngā kōrero tuku iho.</p>	<p>Paearu aromatawai Kaiurangi</p> <p>He whakaaturanga i te painga o ngā pūkenga whakapuaki e tautoko ai i te tiaki whaiaro me te oranga ā-tinana, ā-wairua, ā-hinengaro o te whānau.</p>

Tūmahi 2

Pepa Mahi 2

Putanga 2 – He whakaatu whakapuaki o te rangatiratanga e ai ki te reo me ngā tikanga a te tangata whenua

Me whakapuaki mai ngā āhuatanga e RUA o te rangatiratanga i te nohonga ā whānau e whakatinana ana i ngā pūkenga pāhekoheko me ngā mōhiotanga hoki o te kaupapa, o te horopaki rānei e ai ki te reo me ngā tikanga a te tangata whenua.

Ngā āhuatanga pēnei i te ngākau māhaki, te ngākau tapatahi, te kanohi kai mātārae, te ngākau pono, te whakawhanaungatanga, te kōtuitui

NGĀ ĀHUATANGA

Tūmahi 1 Te rārangai mahi a te ākongā

Me kōwhiri, ā, me whakamārama mai i ngā āhuatanga whāiti e RUA o te rangatiratanga ka whakamahia koe me tō whānau kia hāpai tonu i te oranga tonutanga (ā tinana, ā wairua, ā hinengaro) o te whānau.

- Te whānui – te ngākau māhaki, te ngākau tapatahi, te kanohi kai mātarae, te ngākau pono, te whakawhananungetanga me te kotuitui
- Me taunaki mai i ngā āhuatanga e RUA
- Me hāngai pū tō whakamārama ki ngā tikanga a te tangata whenua
- Me tuhi whakamārama te ākongā mō ia āhuatanga, he takinga kōrero rānei e tautoko ana i te taunakitanga reo ā-atata.

Me whakamārama mai i te rangatiratanga e ai ki te hāpai tonu i te oranga tonutanga (ā tinana, ā wairua, ā hinengaro) o te whānau.

- Te whānui – te kapa haka, te hakinakina, te hui ahurei, te hui ā-whānau, ā-hapu, ā-iwi, te wananga, te hui taurima, te hui ā-hāhi me te whakanui tangata
- Me taunaki mai i ngā taurira e RUA
- Me tuhi whakamāramatanga poto te ākongā, he takinga kōrero rānei e tautoko ana i te taunakitanga reo ā-atata.

Kaiaromātai	Ākongā	Putanga 2 – Te whakapuaki i te rangatiratanga e ai ki te reo me ngā tikanga a te tangata whenua	
	Kua tutuki te reo ā-atata		<ul style="list-style-type: none"> • He tika te whakatu i ngā whakapuaki o te rangatiratanga • E whakatu ana i ngā whakapuaki e rua o te rangatiratanga. • E whakatu tika ana ngā āhuatanga o te rangatiratanga e ai ki te reo me ngā tikanga. • E tohu tika ana ngā whakapuaki o te rangatiratanga i te hiranga o te pāhekoheko whāiti, ngā pūkenge me ngā mōhioitanga e ai ki te kaupapa, ki te horopaki rānei.
	Te Rā	<p>He kōrero tāpiri a te kaiaromātai</p>	

Te rārangi aromatawai a te Kaiaromātai

Ākonga			
Tau Ākonga			
Kaupapa	Tikanga – Ariā Tikanga	Kaupae	3
Nama Putanga	32184 Putanga 1	Whiwhinga	5
Paerewa	Te whakaatu mōhio me te whakapuaki i te rangatiratanga		

Paetae	Kaiaka	Kairangi
He whakaatu mōhio me te whakapuaki i te rangatiratanga	He hōhonu te whakaatu mōhio me te whakapuaki i te rangatiratanga	He matawhānui te whakaatu mōhio me te whakapuaki i te rangatiratanga

Tipako	Paearu Mahi	Paetae ✓	Kaiaka ✓	Kairangi ✓
He whakaatu mōhio i te rangatiratanga	1.1 He whakaahua i ngā āhuatanga o te rangatiratanga e ai ki ngā mahi hāpai i te oranga ā-tinana, ā-wairua, ā-hinengaro o te whānau Me taunaki mai i ngā āhuatanga e RUA			
	1.2 He whakamārama i te rangatiratanga e ai ki te hāpai i te oranga ā-tinana, ā-wairua, ā-hinengaro o te whānau. Me taunaki mai i ngā āhuatanga e RUA			
He whakapuaki i te rangatiratanga e ai ki te reo me ngā tikanga.	2.1 He whakaatu i ngā whakapuaki o te rangatiratanga i te nohonga ā-whānau. Me taunaki mai i ngā whakapuaki e RUA			
	2.2 Ko ngā whakapuaki o te rangatiratanga e tohu ana i te hiranga o te pāhekoheko whāiti, ngā pūkenga me ngā mōhiotanga rānei e ai ki te kaupapa, ki te horopaki hoki.			
He hōhonu te whakaatu mōhio i te rangatiratanga. E tautohu ana, e whakatairite ana i ngā āhuatanga o te rangatiratanga a ngā tauria Māori tawhito e ai ki te reo, ki te tikanga, ki te kawa anō hoki.				
He matawhānui te whakaatu mōhio i te rangatiratanga. E whakatairite ana i te pānga mai o te rangatiratanga ki te oranga ā-tinana, ā-wairua, ā-hinengaro o te whānau me ngā tauria Māori tawhito hoki e ai ki ngā kōrero tuku iho.				

Te tauaki aromatawai				Paetae	Kaikā	Kairangi	Waiotou:
Kua tutuki				Kua tutuki te taumata Paetae me te taumata Kaikā			Porowhitanā te taumata tika
Kua tutuki ngā taumata katoa (Paetae, Kaikā, Kairangi)				Kaore anō			
Te Rā:				Paetae	Kaikā	Kairangi	

He Pitopito Kōrero: