



MĀORI QUALIFICATIONS SERVICES  
NGĀ RATONGA TOHU MĀTAURANGA MĀORI

TĪKAROHIA TE MARAMA REALISE YOUR POTENTIAL

Ngā Rauemi Aromatawai

## TE ITI A TARANGA

Paerewa 32185 (Putanaga 1)

Te whakaatu mōhio me te whakapuaki hoki i te manaakitanga

Kaupae 3 | Whiwhinga 5



Ingoa	<input type="text"/>
Kura	<input type="text"/>
Kaiwhakawā	<input type="text"/>
Tau Ākonga (NSN)	<input type="text"/>

~ Pukapuka Aromatawai ā te Ākonga



NEW ZEALAND QUALIFICATIONS AUTHORITY  
MANA TOHU MĀTAURANGA O AOTEAROA

QUALIFY

# Tēnā koe

Anei tō pukapuka aromatawai mō te Paerewa, 32185 **Manaakitanga: Te whakaatu mōhio me te whakapuaki hoki i te manaakitanga.**

Ko ngā taumata o te paerewa nei ko te Paetae, te Kaiaka, te Kairangi me te Kāore i whiwhi.

## Paearu aromatawai Paetae

Me taunaki mai ngā whakautu a te ākonga i ngā āhuatanga e whai ake nei:

- he whakaaturanga i te manaakitanga e ai ki te oranga whaiaro o te tangata
- he whakaaturanga i te manaakitanga e ai ki te oranga o te whānau
- he whakapuaki i te manaakitanga e ai ki te reo me ngā tikanga, te huritao whaiaro me te tūhono i ētahi atu

## Paearu aromatawai Kaiaka

Me taunaki mai ngā whakautu a te ākonga i ngā āhuatanga e whai ake nei:

- he hōhonu te whakaatu mōhio i te manaakitanga
- he whakaaturanga i te manaakitanga e ai ki te tukangā ā-whanau kia hāpai i te hauora me te oranga whaiaro (ā-tinana, ā-whānau, ā-wairua, ā-hinengaro) o te tangata, o t/ētahi atu hoki.

## Paearu aromatawai Kairangi

Me taunaki mai ngā whakautu a te ākonga i ngā āhuatanga e whai ake nei:

- he matawhānui te whakaatu mōhio i te manaakitanga
- he whakapuaki i te manaakitanga e ai ki te manaaki manuwahiri, te tāwharau me te atawhai i te whanau, te hapū, te iwi, te hapori me te taiao.

He pukapuka aromatawai tēnei me āna pepa mahi hei whakaoti i ngā tūmahi aromatawai. E takoto ana ngā pepa mahi hei āwhina ki te whai taunaki, e tutuki pai ngā ture o te paerewa.

Kia kaha ki te whakaoti tika i ngā mahi o te pukapuka nei kia tutuki pai ai āu mahi katoa.

**Kia ora mai anō.**

# Paearu Aromatawai

Me whakaoti tika i a koe ngā tūmahi aromatawai e RUA kia whai whiwiringa mō te paerewa nei.

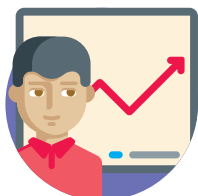
## Me whakapau kaha hoki koe ki te :



**PĀNUI** me te rangahau



**WHAKARONGO** me te tuku pātai



**WHAKARITE MAHI** me te tuhi kōrero



**WHAKARĀRANGI** me te whakaemi kōrero tautoko



**HOPU MAHI** me te whakaatu ki tō kaiako

- Mā tō kaiako koe e tohutohu ai mō te roanga o te wā hei whakaoti i a koe ēnei tūmahi aromatawai katoa.
- **KIA MAUMAHARA** ki te whakarite rārangi tohutoro hei puna kōrero tautoko. Mā tō kaiako anō ēnei whakamārama e kōrero atu ki a koe.

Ingoa

Tau Ākonga (NSN)

# Tūmahi 1

## Pepa Mahi 1

Putanga 1 – Te whakaatu mōhio i te manaakitanga

Tūmahi aromatawai 1 – ka arotakengia te 1.1, 1.2

Whakaahua mai te manaakitanga e ai ki te oranga whaiaro o te tangata, te oranga hoki o te whānau.

- Me whakaoti i a koe ngā tauria e RUA mō te kaupapa me te horopaki.

	Kāore anō kia tutuki		Kua tutuki	1.1, 1.2

## Tūmahi 2

## Pepa Mahi 1

Putanga 2 – He whakapuaki i te manaakitanga e ai ki te reo me ngā tikanga.

### Tūmahi aromatawai 2 – ka arotakengia te 2.1

Whiringia tētahi o ngā kaupapa ki raro nei, ā, whakamāramahia mai ngā taurira e RUA mo te whakapuaki i te manaakitanga e ai ki te reo me ngā tikanga.

Te whānui:

- Te tiaki i ngā tangata tūroro/ tangata māuiui
- Te tiaki i te whenua me te moana
- Te whāngai manuhiri
- Te hoko kai/ taonga hei whakaora i te whānau

1.

	Kāore anō kia tutuki		Kua tutuki	2.1
				2.

## Tūmahi Aromatawai 2 – ka arotakengia te 2.2

Te whakapuaki i te manaakitanga i ngā taura e RUA e ai ki te huritao whaiaro o te tangata.

Whakaarohia ki ēnei āhuratanga i a koe e huritao whaiaro ana:

- I pēhea nei te manaakitanga i whakapuaki? (Me huritao whaiaro koe i ngā taura kua taunaki mai nei)
- I pēhea ki a koe anō?
- He āhuratanga mahi ano āu hei panoni?

1



	Kāore anō kia tutuki		Kua tutuki	2.2

## Te rārangi aromatawai a te Kaiaromātai

Ākonga			
Tau Ākonga			
Kaupapa	Tikanga – Ariā Tikanga	Kaupae	3
Nama   Putanga	32185   Putanga 1	Whiwhinga	5
Paerewa	He whakaatu mōhio me te whakapuaki i te manaakitanga		

Paetae	Kaiaka	Kairangi
He whakaatu mōhio me te whakapuaki i te manaakitanga	He hōhonu te whakaatu mōhio me te whakapuaki i te manaakitanga	He matawhānui te whakaatu mōhio me te whakapuaki i te manaakitanga

Tīpako	Paearu Mahi	Paetae ✓	Kaiaka ✓	Kairangi ✓
He whakaatu mōhio i te manaakitanga.	1.1 E RUA ngā taura o te manaakitanga e ai ki te oranga whaiaro o te tangata			
	1.2 E RUA ngā taura o te manaakitanga e ai ki te oranga o te whānau.			
Te whakapuaki i te manaakitanga e ai ki te reo me ngā tikanga.	2.1 E RUA ngā taura whakapuaki o te manaakitanga e ai ki te tūhono tāngata ki t/ētahi atu.			
	2.2 E RUA ngā taura whakapuaki o te manaakitanga e ai ki te huritao whaiaro			
He hōhonu te whakaatu mōhio i te manaakitanga <i>He tautohu me te whakaahua i te manaakitanga e ai ki te tukanga ā-whānau ki te hāpai i te hauora me te oranga whaiaro (ā-tinana, ā-whanau, ā-hinengaro, ā-wairua) o te tangata me ētahi atu.</i>				
He matawhānui te whakaatu mōhio o te manaakitanga <i>He tautohu me te whakaahua i te whakapuaki manaakitanga e ai ki te manaaki manuwhiri, te tāwharau me te atawhai i te whanau, te hapū, te iwi, te hapori me te taiao.</i>				
HE KŌRERO ĀWHINA:				

Te tauaki aromatawai		Paetae		Kaiara		Kairangi	
Kua tutuki		Kua tutuki te taumata Paetae me te taumata Kaiara		Kua tutuki ngā taumata katoa (Paetae, Kaiara, Kairangi)			
Kairangi							
Porowhitanga te taumata tika		Kaore anō		Paetae		Kairangi	
Waiuhu Kaiaromatai		Te Ra:					

## He Pitopito Kōrero: