

Learner 4: PC 1.1 and 1.2

Learner 4: Meets Requirements
Intended for teacher use only

Ramp 1

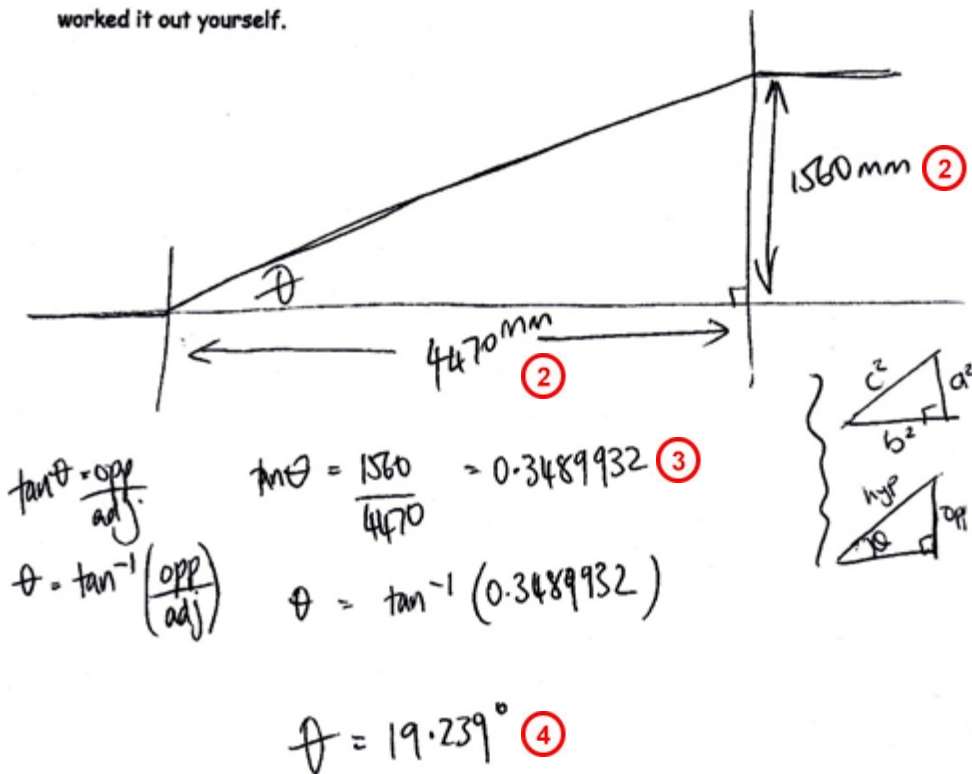
Block course

Unit 5236

Is it legal?

Sketch and measure the ramp you have chosen, and then work out whether or not it meets the Building Code for a public building. **1**

Remember: Get your supervisor to sign off that you have measured accurately, and worked it out yourself.



Is it legal? No Why? the slope angle is way too high (19.239° instead of 4.764°) **5**

Supervisor sign-off - The candidate:

- took the measurements by themselves, using ~~THE MEASURE~~ PLUMB LINE LEVEL (list equipment used), and the measurements were accurate. Signed [Signature]
- worked out the problem/s by themselves. Signed [Signature] 15/10/14 **6**