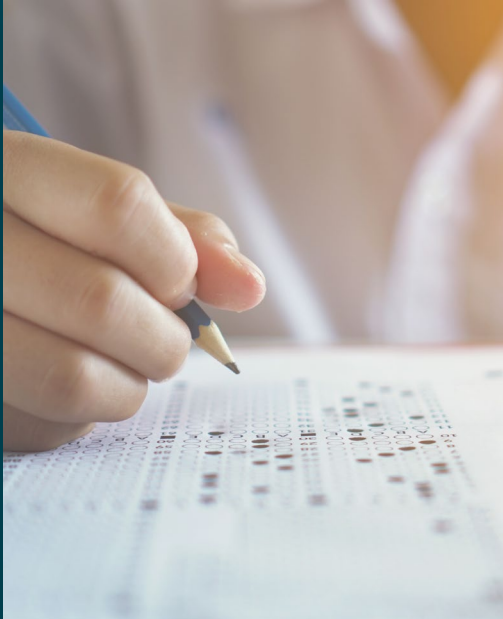


# Myth 3

## Managing authenticity

### FACT 1



### Schools must change publicly sourced assessment material

Changes can include:

- specific facts or figures
- data sets or sources
- contexts, topics or performance opportunities.

---

PTO for more facts and myths

## Facts

- Schools must change publicly sourced assessment material. Changes can include:
  - specific figures or text
  - data sets or sources
  - contexts, topics or performance opportunities.
- Students don't need to complete the same assessment task or be assessed at the same time. Some students may need a separate task or context to make sure authentic work is submitted.
- Tasks can be broken into group and individual components to identify individual evidence.
- A Not Achieved result must be reported for proven authenticity breaches that compromise a student's result.
- School policy will determine if a proven authenticity breach for internally assessment standards is an acceptable reason for a further assessment opportunity.
- Assessors can monitor the authenticity of student work as it's developed and during marking through:
  - regular check points
  - asking students to submit plans and drafts
  - oral questioning to confirm understanding
  - asking for a repeat performance, if in doubt
  - being familiar with or controlling the resources available
  - referencing and bibliographies
  - monitoring revision changes
  - using plagiarism software or internet searches of suspicious phrases.

## Myths

- Publicly available tasks can be used unmodified.
- All students need to complete their assessment at the same time to ensure authenticity.
- Group work can't be assessed.
- Authenticity checks aren't needed if an authenticity declaration is signed.
- Digital assessment allows more opportunity for authenticity breaches.
- Schools can withdraw a student's entry for a proven authenticity breach.

## More points about authenticity

Authenticity checks provide assurance that evidence produced is a student's own work.

Inauthentic work may be a result of:

- students not understanding the assessment task or what constitutes inauthentic work and plagiarism
- copying from another person or public source, or plagiarism
- too much guidance from a teacher, assessor, parent or tutor
- students sharing work with other students.