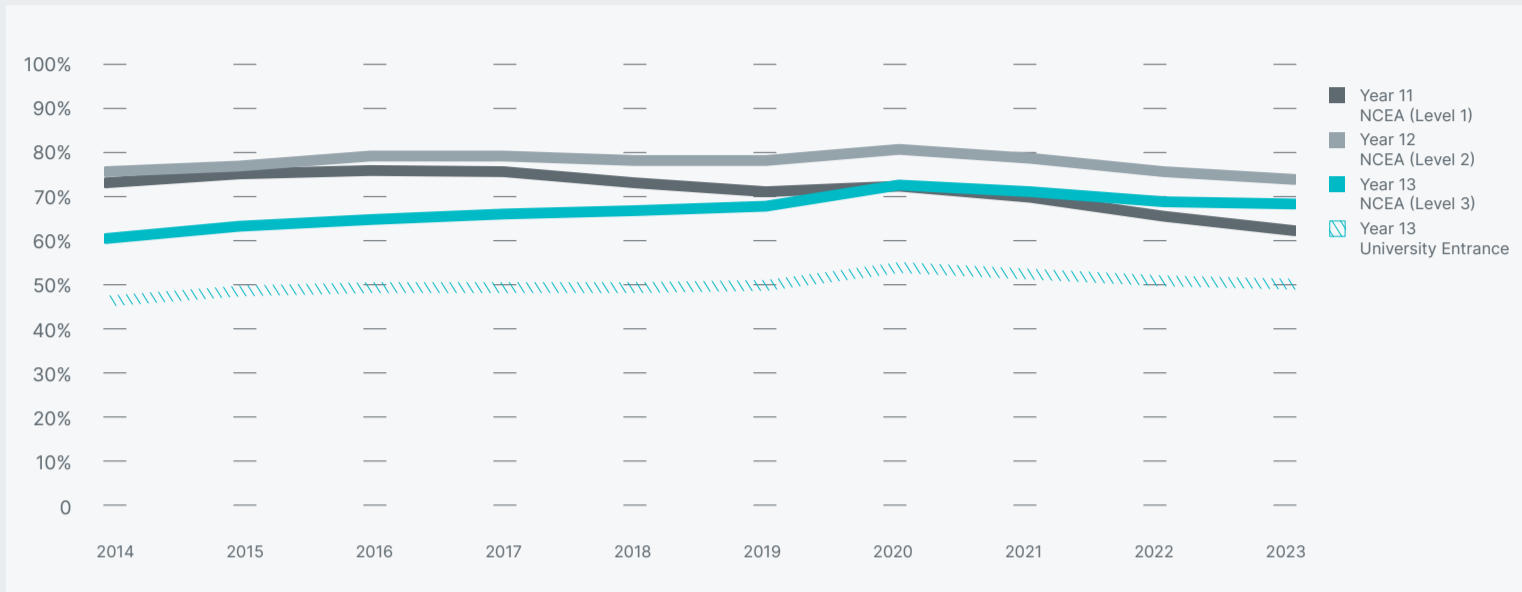


# Attainment **BY THE NUMBERS 2023**

FOR NEW ZEALAND NATIONAL CERTIFICATE OF EDUCATIONAL ACHIEVEMENT (NCEA) AND UNIVERSITY ENTRANCE

## Overall NCEA and University Entrance attainment



This shows a 10-year view of overall NCEA and University Entrance (UE) attainment for Year 11 Level 1, Year 12 Level 2, Year 13 Level 3 and Year 13 UE domestic students.

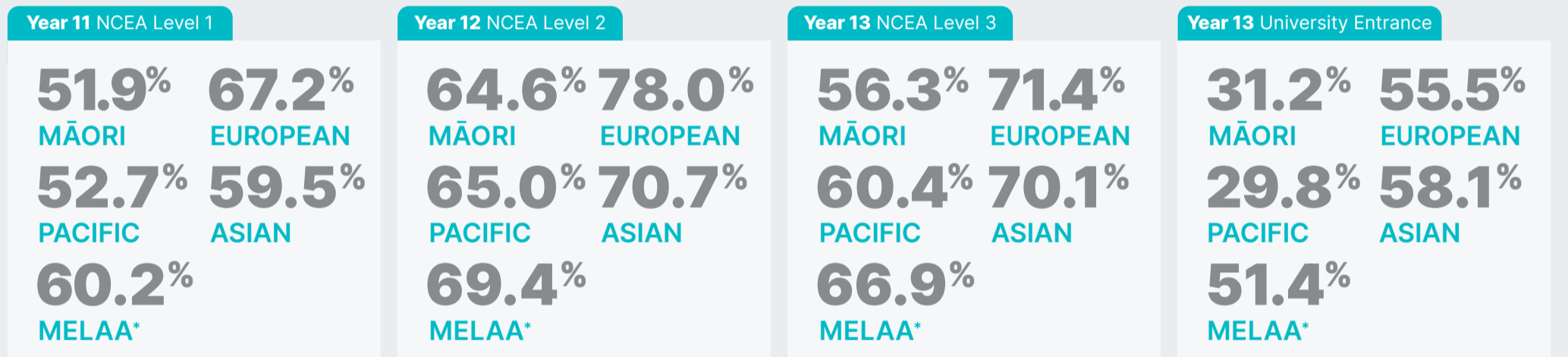
In 2020, 2021, and 2022, teaching, learning and assessment were disrupted by the COVID-19 pandemic. To recognise the disruptions, changes were made to the NCEA and University Entrance award criteria in these years. Caution should be exercised when comparing 2020 to 2022 attainment data with previous or subsequent years.

The measure of attainment used is enrolment-based. The reporting population includes all domestic students in Year 11 to 13 aged less than 19 years in the reporting year and who were enrolled at a secondary school for one day or more.

### 2023 overall national

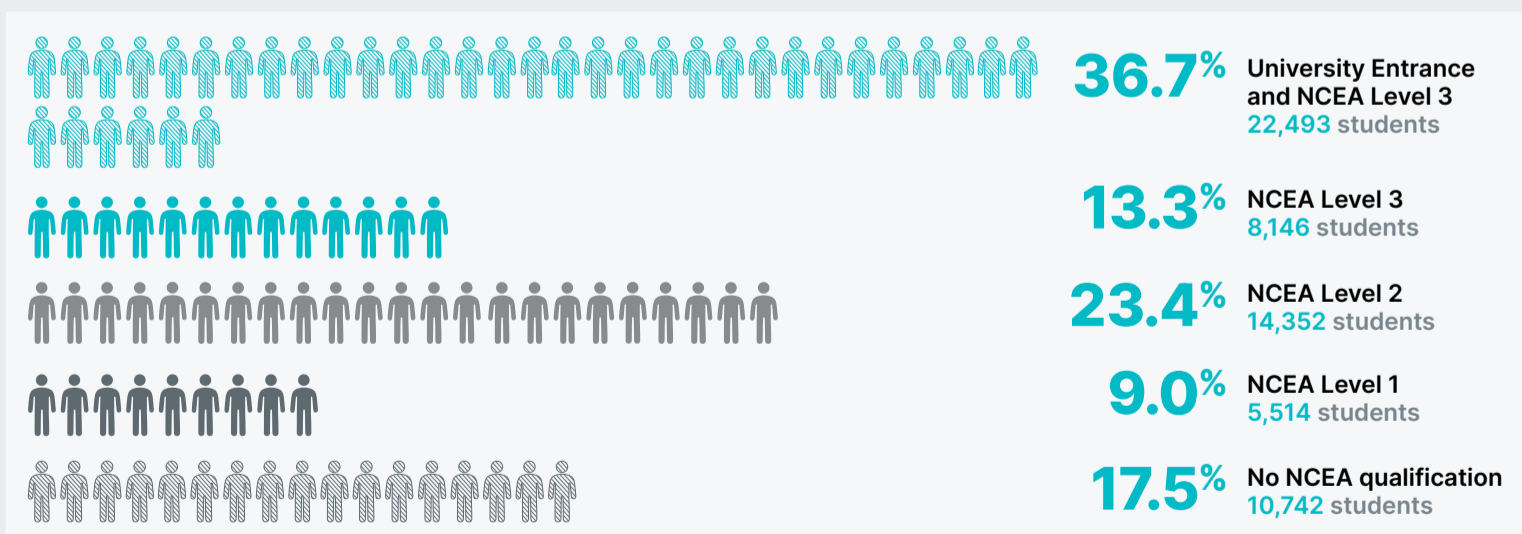


### Attainment rates by ethnicity



\*Middle Eastern/Latin American/African

### Tracked 2021 Year 11 cohort



This shows the highest NCEA attainment (including UE) at the end of 2023, for the 61,247 students who were in Year 11 in 2021. Students who have left New Zealand secondary schooling during the 2021-2023 period and those who take more than 3 years to complete a qualification are included. Students who participate in and complete other non-NZQF assessments such as Accelerated Christian Education (ACE), International Baccalaureate (IB) or Cambridge Assessment International Education (CAIE) are included.

Approximately 1,500 students leave school with a non-NZQF assessment, according to the Ministry of Education (based on 2023 figures).

### Results by assessment standard type

Three categories of assessment standards can contribute towards the achievement of NCEA qualifications: externally assessed achievement standards, internally assessed achievement standards, and unit standards. This shows the proportion of results reported to NZQA by assessment standard type for levels 1, 2, and 3. The percentage point change over the last five years (since 2019) is also shown.

- Unit standards
- Internally assessed achievement standards
- Externally assessed achievement standards

