

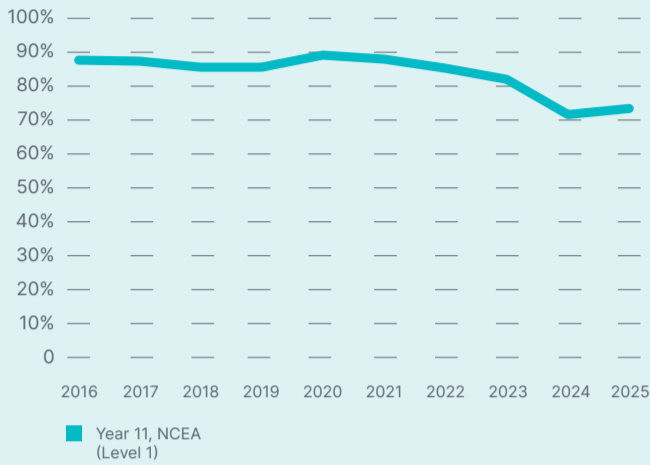
# Attainment

BY THE NUMBERS 2025

FOR NEW ZEALAND NATIONAL CERTIFICATE OF EDUCATIONAL ACHIEVEMENT (NCEA) AND UNIVERSITY ENTRANCE

## Overall NCEA and University Entrance attainment

Participation-based attainment rates of Year 11 students attaining NCEA Level 1



The graph to the right shows a 10-year view of NCEA Levels 2, 3 and University Entrance (UE) attainment for Year 12 Level 2, Year 13 Level 3 and Year 13 UE domestic students.

The measure of attainment used is enrolment-based. The reporting population includes all domestic students in Year 12 to 13 aged less than 19 years in the reporting year and who were enrolled at a secondary school for one day or more.

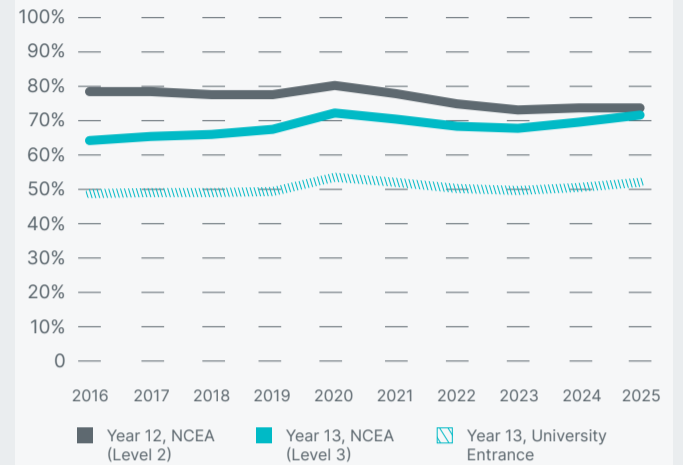
The graph to the left shows a 10-year view of NCEA Level 1 for Year 11 domestic students. The measure of attainment used is participation-based.

Participating students are a subset of the Enrolment-based cohort, where students have participated in a full NCEA programme of assessment towards the qualification.

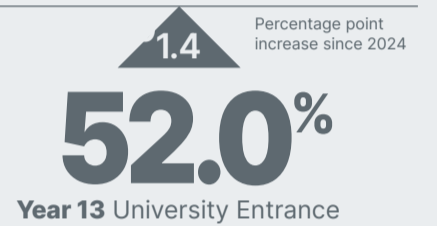
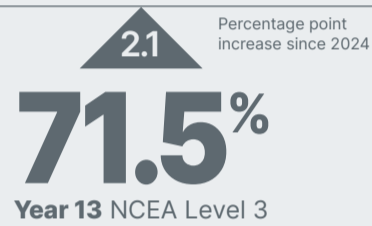
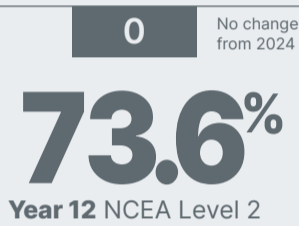
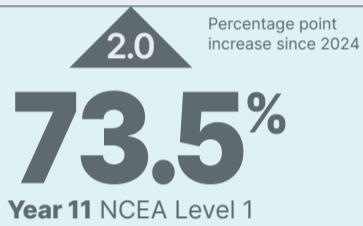
Participation is defined as being entered for 80+ credits at Level 1 or above (this includes credits achieved in prior years).

In 2020, 2021, and 2022, teaching, learning and assessment were disrupted by the COVID-19 pandemic. To recognise the disruptions, change were made to the NCEA and University Entrance award criteria in these years. Caution should be exercised when comparing 2020 to 2022 attainment data with previous or subsequent years.

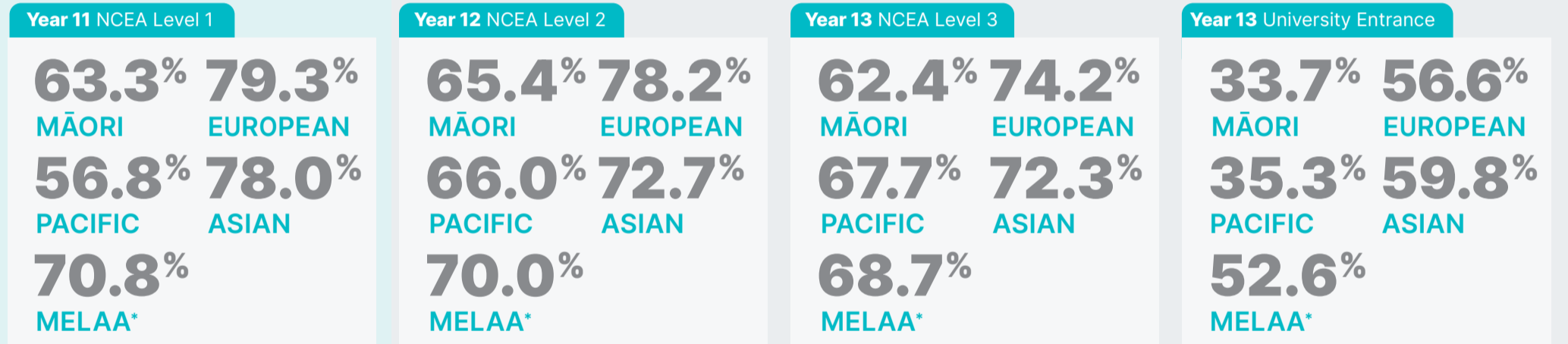
Enrolment-based Year 12 Students Attaining NCEA Level 2, Year 13 Students Attaining NCEA Level 3 and University Entrance



### 2025 overall national

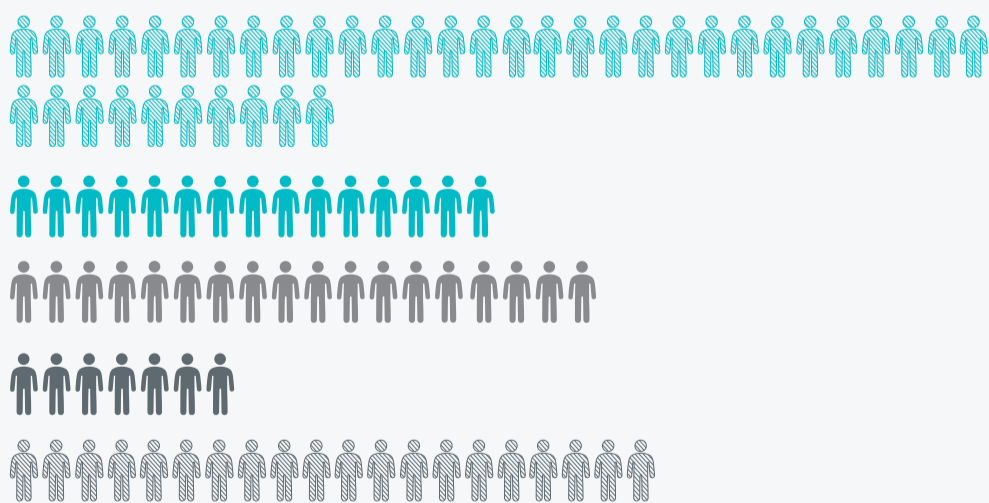


### Attainment rates by ethnicity



\*Middle Eastern/Latin American/African

### Tracked 2023 Year 11 cohort



**40.0%** University Entrance and NCEA Level 3  
27,014 students

**15.0%** NCEA Level 3  
10,154 students

**18.3%** NCEA Level 2  
12,236 students

**6.7%** NCEA Level 1  
4,526 students

**20.0%** No NCEA qualification  
13,497 students

This shows the highest NCEA attainment (including UE) at the end of 2025, for the 67,527 students who were in Year 11 in 2023. Students who have left New Zealand secondary schooling during the 2023-2025 period and those who take more than 3 years to complete a qualification are included. Students who participate in and complete other non-NZQF assessments such as Accelerated Christian Education (ACE), International Baccalaureate (IB) or Cambridge Assessment International Education (CAIE) are included.

Approximately 2,200 students leave school with a non-NZQF assessment, according to the Ministry of Education (based on 2025 figures). An increase of 300 on the 2024 figures supplied.

### Results by assessment standard type

Three categories of assessment standards can contribute towards the achievement of NCEA qualifications: externally assessed achievement standards, internally assessed achievement standards, and unit standards. This shows the proportion of results reported to NZQA by assessment standard type for levels 1, 2, and 3. The percentage point change over the last five years (since 2021) is also shown.

- Externally assessed achievement standards
- ▨ Internally assessed achievement standards
- Unit standards

