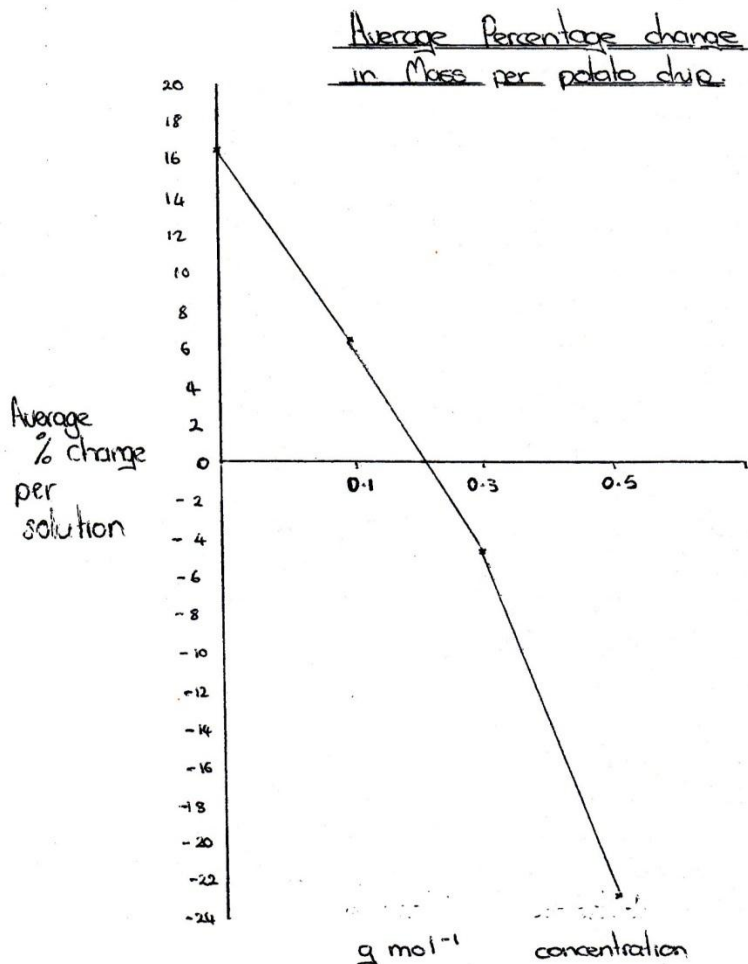


Please note – These are extracts from one student’s response

Purpose: to investigate the presence or absence of a relationship between osmosis and sugar concentration within potato cells.

Hypothesis: I think that the potato chips will become soft, rubbery and shrink as they lose water to high sugar solutions.

1



2

3

There is a dramatic change in the curve as concentration increases however the weight decrease is fairly consistent. As the concentration of the solution increases the weight of the potato chip decreases therefore resulting in a negative gradient of the curve.

4

The other source the teacher gave us does support my findings and conclusion but it has much larger percentage changes.

It supports my conclusion and trend – as the concentration of sugar increases the potato chips change weight because of osmosis.

3