

## Key Designers & Characteristics

Many other architects and designers took on similar mottoes such as Designer Buckminster Fuller adopted the engineer's goal of "Doing more with less", a similar sentiment was industrial designer Dieter Rams' motto, "Less but better" adapted from van der Rohe. Yoshio Taniguchi and Tadao Ando are two key Japanese architects who have incorporated Japanese culture and tradition in to the movement



Minimalist structure uses relatively simple elegant designs, with most designers going with quality rather than quantity.

The buildings minimalist look is shown by using:

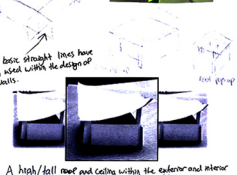
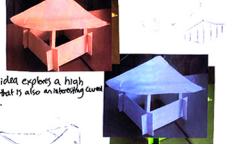
- Lighting effectively
- Basic geometric shapes as outlines
- Similar like shapes for components
- Tasteful non-fussy bright colour combinations
- Natural textures, colours and
- Clean and fine finishes
- Natural patterns on stone cladding and real wood encapsulated within ordered simplified structures
- Real metal producing a simplified but prestigious architecture and interior design.
- May use colour brightness balance and contrast between surface colours to improve visual aesthetics
- Space age style utilities (lamps, stoves, stairs, technology, etc.)
- Neat and straight components (like walls or stairs)
- Flat or nearly flat roofs
- Pleasing negative spaces
- Large windows to let in lots of sunlight



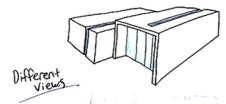
## Influences

The minimalist movement has inspired many other designers and architects throughout the years. De Stijl was one of the first architects to express the key elements of minimalism and he has influenced others such as Ludwig Mies van der Rohe, who has influenced one of the key designers of the movement, Tadao Ando. His Japanese heritage has expressed through his work and influenced the movement. Many cities and town within Japan have a minimalist design, being very traditional and simplistic which is a key characteristic within the movement.

### More initial ideas

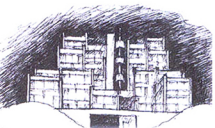


I have continued to keep a flat roof as it is a strong characteristic of minimalism. It also keeps the strong shape of my building/facade.



## Rokko Housing

Tadao Ando is the designer and architect of Rokko Housing 1, 2 and 3. With his Japanese heritage, he used harmony between elements of nature and Japanese culture to design the minimalist look of Rokko housing in Kobe. Using the natural landscape, lighting, flat roofs and natural elements, the Rokko Housing's are a key example of the minimalist movement.



The whole design has blended in and surrounded by the natural habitat and environment

Rokko housing uses flat roofs to flow with the minimalist look of simple shapes

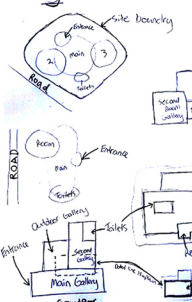
Large windows to let lots of natural sunlight in

Simple shapes are used within the whole design, mainly squares and rectangles are used in Rokko Housing

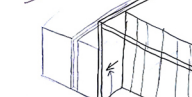
Each house has contact with nature, with grass courtyards

The natural landscape has been used to offer great views for every house

## Layout Ideas

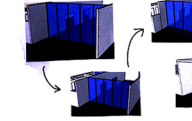


### Re-Design

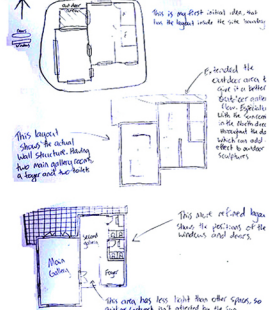


I have decided to move the main window up so it is straight up the page and the other windows therefore they change as the building goes on. I looked at buildings sitting on a hill etc.

### Developed on sketch-up



## Site layout Development



Initial ideas

This idea explores many key features of minimalism design. Such as natural light, flat roof, straight lines and basic shapes.

Extended large window gives a good effect to the design.

## Developing Exterior

This is the basic skeleton shape of my exterior at the moment. Has a minimalist look with basic shapes, of a rectangle and square.

plan view

Front view

This idea shows a curved roof that is supported by wooden beams. Draws minimalist characteristics with its basic design but also explores different ideas of extended features.

Beams are extended to add effect that they are supporting the roof

Extended curved roof explores a different style, but isn't a real minimalist flat-roof characteristic

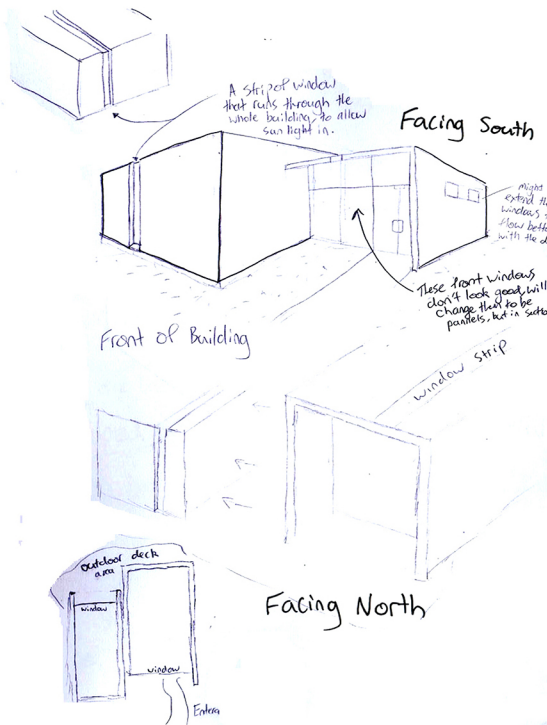
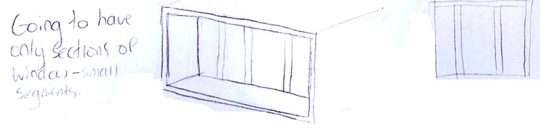
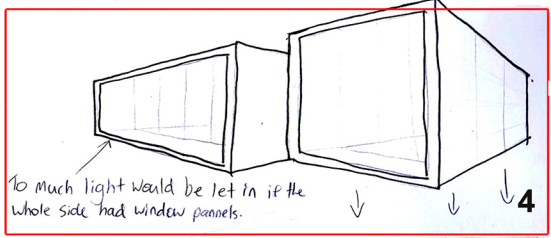
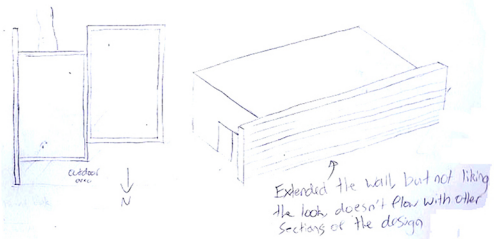
plan view

The extended height of the window doesn't really flow with a minimalist look.

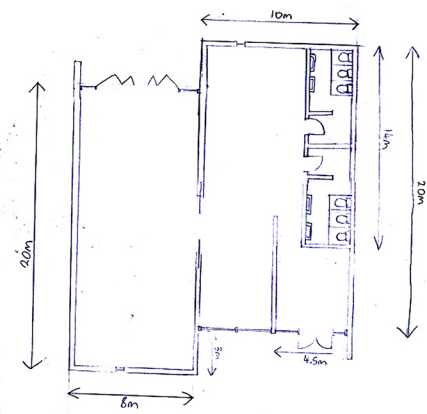
Straight box

Angled roof, box

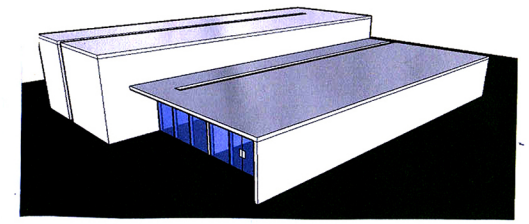
# Continued Development



# Refined Floor Plan



# Final Design



Isometric

