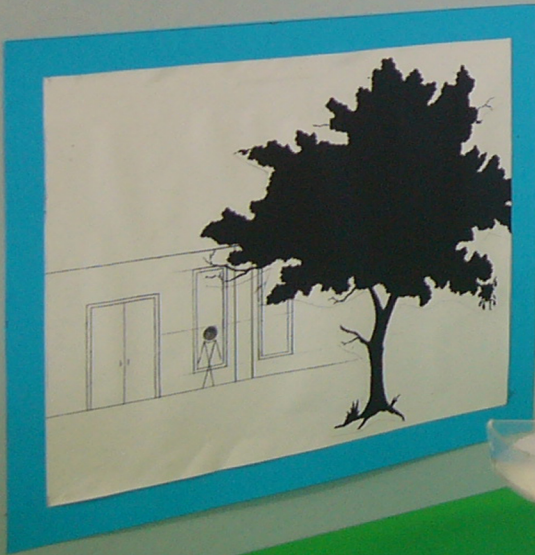
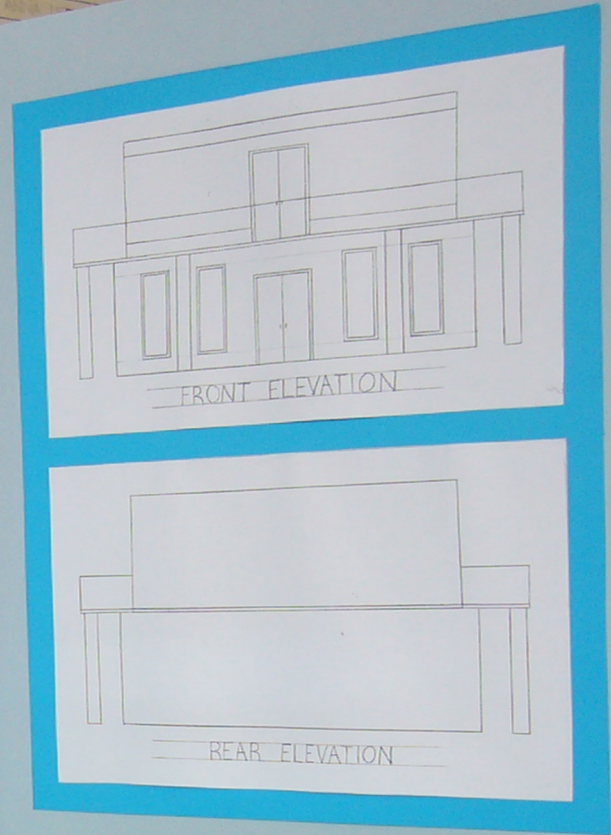
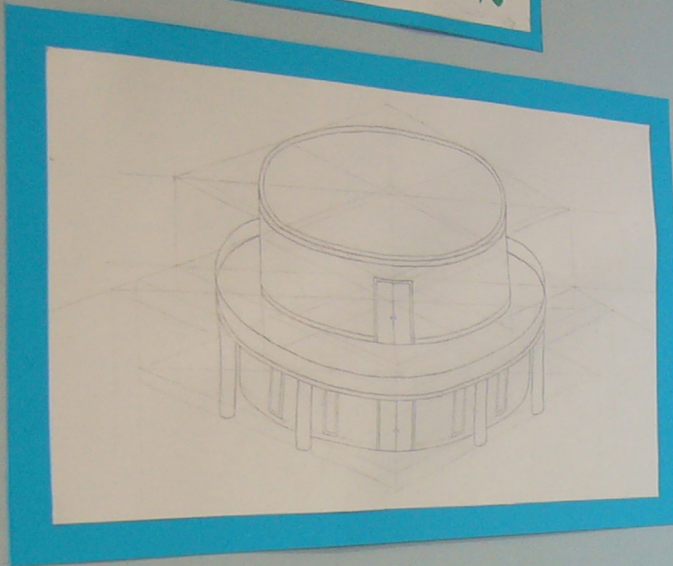


# PAVILION

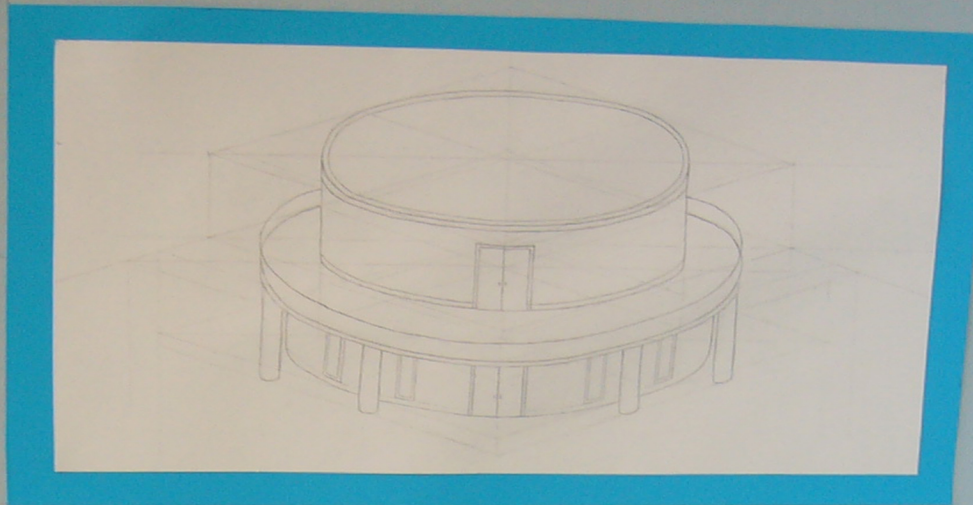


This pavilion that I have designed is constructed from white concrete and consists of simple geometric shapes key to the minimalist design movement. The balcony on the second level allows for visitors to enjoy the summer weather and a view of the domain. The large windows on this level and the glass roof means that plenty of natural light can enter the space. It also means that in the case of bad weather (eg. rain) visitors will still be able to enjoy the surrounding landscape and the museum.

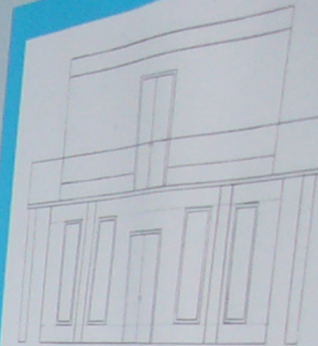
Scale of elevations and model - 1:100



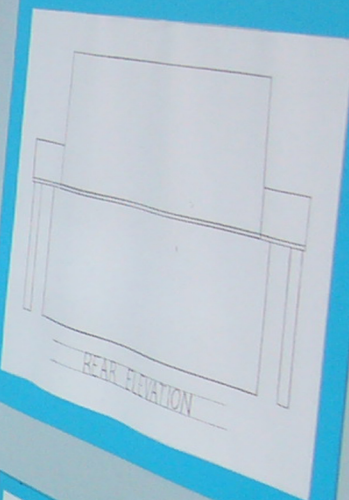
# PAVILION



*This pavilion that I have designed is constructed from white concrete and consists of simple geometric shapes key to the minimalist design movement. The balcony on the second level allows for visitors to enjoy the summer weather and a view of the domain. The large window on this level and the glass roof means that plenty of natural light can enter the space. It also means that in the case of bad weather (e.g. rain) visitors will still be able to admire the surrounding landscape and the museum next door without going outside. The Columns and windows are similar to elements of the museum entrance creating a relationship.*



FRONT ELEVATION



REAR ELEVATION

Scale of elevations and model- 1:100

