



Achieved  
 NZQA Intended for teacher use only

### Maori Architecture Research


The carved patterns here are really detailed through and through. And the pawa hiko stand out because of the red material.



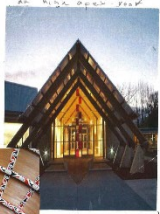
The traditional appeal the art carving has is pleasant using natural wood material.




I believe that the piece of art can withstand for a long time after it being created.



This is an example of Modern Maori architecture because the roof being shaped into an apex and the beams supporting it. Specifically the beam placed in the middle.


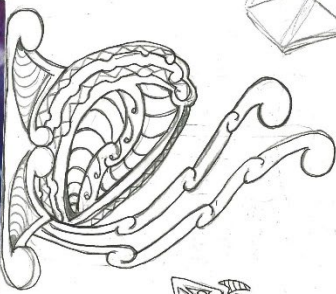

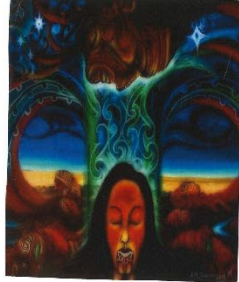
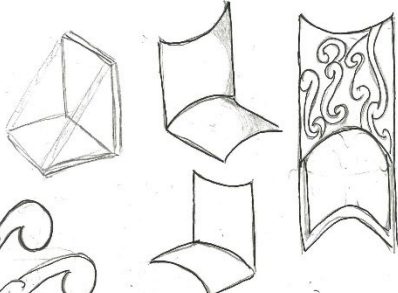
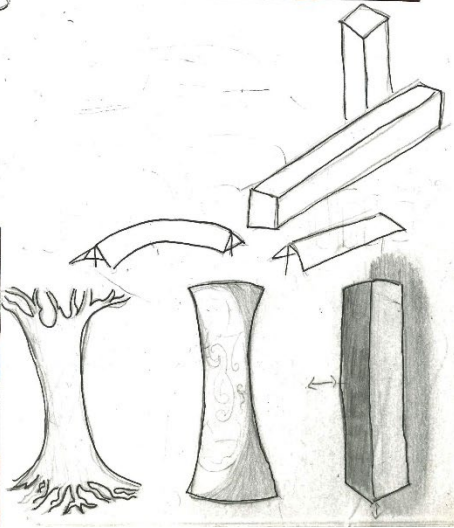


The picture on the right is an example of older day Maori architecture with the exposed support beam, separating the roof from the floor.



Modern and old Maori architecture both have a connection to each other. Since Modern Maori architecture takes inspiration from the older day Maori architecture. That is why there is such similarity in the old and modern designs.

# MAORI CREATION

In the beginning Ranginui and Papatūānuku were joined together. And their children were born between them. The children decided to separate the two to allow life to come into the world. After this the children became gods of various parts of the natural world.

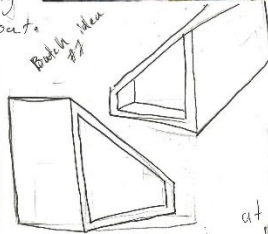
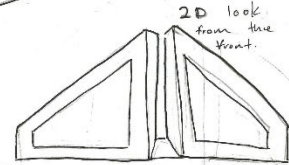
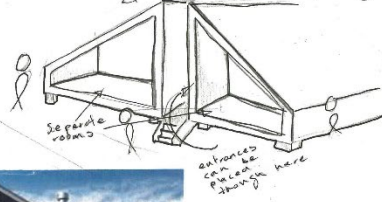


Belinda George Architects

Revising to better idea #2  
The sun can cycle through all day long

The architect behind this design kept using a series of a square or rectangle like pattern everywhere and even near the house. This may influence my own design by the repetitive appearance of a single shape or pattern. The architect probably took inspiration by the repetitive pattern in Maori architecture.

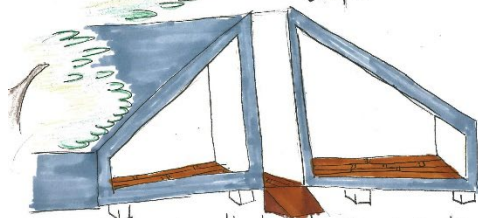
The whole shape of the house looks that of a maarae but cut in half vertically. The inside and outside material looking polar opposite but it stands out.



In this design the architect Belinda thought of using a high apex roof with at the end of both "tails" of the curved house



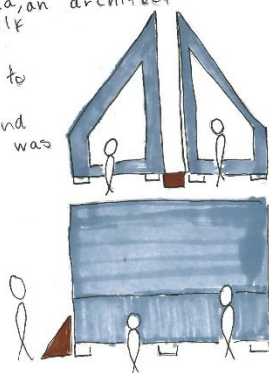
Concept Idea #4 Separation



The keyword that lead me to this design was "separation" as the two rooms are separated inbetween.

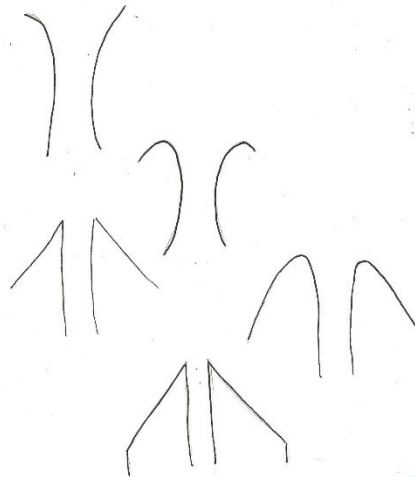
However the whole shape was inspired by a design Belinda, an architect had designed herself

I just happen to mirror the structure and combine the result was this.



Still wondering what material to use on the roof but im leaning towards a clean metal sheet, rigid look.

on how the roof line is made can allow sun to cycle through all day long if positioned towards the east.



# Ohiwa Harbour Inspiration

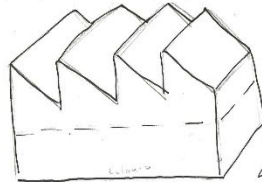
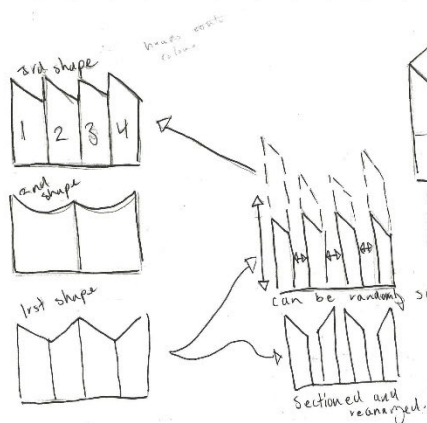
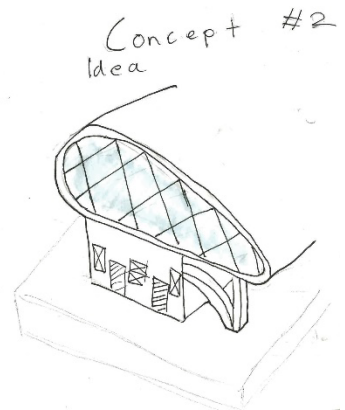
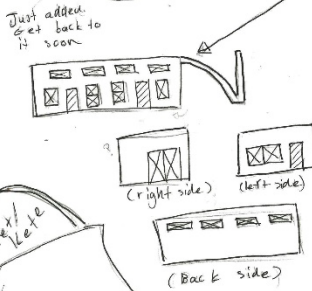
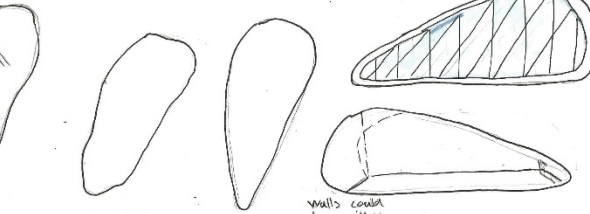
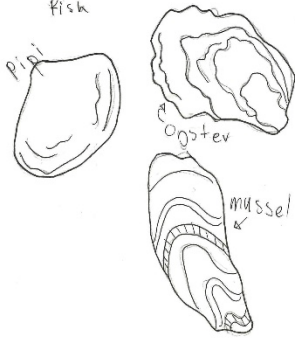
Ohiwa harbour has another name it goes by, "Basket of the people".

Basket or kete was probably used to carry seafood.

The seafood they picked could be:

Pawa, Oyster, Pipi, Crayfish, mussel and fish

Kete are made of flax that the maori picked themselves. They have a over and under pattern.

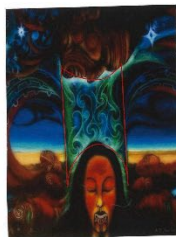
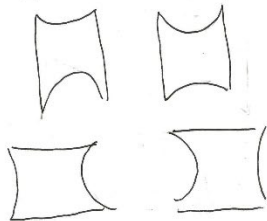


Reminds me of weather boards used on houses.

could use these weather boards as a material on my concept. Just flip and you can see the resemblance.



## Concept Idea #3 Object displacement



referencing to the first shape

