

Grade: Achieved

For Achieved, the student needs to generate product or spatial design ideas using visual communication techniques to generate their own design ideas that relate to design influences.

This involves using visual communication techniques to generate the student's own design ideas that relate to characteristics of source materials. One of the sources must be an appropriate te ao Māori design influence. These can include regional styles, types, and forms of objects, spaces, and buildings. The other can be any other designed source. A rationale is required for both influences, including a written description of the design influence, its significance, and acknowledgment of authorship. This can be supported by a collated set of images. This is followed by generating design ideas that relate to the characteristics (design elements) of the source materials.

In this exemplar, there is evidence of a design influence from te ao Māori, with examples of traditional waharoa (a carved entranceway), and from Daniel Libeskind (a Polish–American deconstructivist architect), and Elisapeta Heta (a noted NZ architect). A rationale is provided for both influences, through collated images and descriptions of the waharoa, Libeskind's, and Heta's work.

Design characteristics and elements are identified for each influence and are drawn on in the generation of shapes and forms. The concept of a waharoa/gateway from te ao Māori and triangular elements from Daniel Libeskind are explored and progressed in the subsequent design ideas. Design ideas are generated using visual communication techniques of 2D and 3D sketching and digital modeling. The focus of the generated design ideas is primarily aesthetic, resulting in the restriction of this grade to Achieved.

To meet the 'develop' criteria for Merit, evidence must demonstrate the use of visual communication techniques to draw on the characteristics of source materials, to explore the function and aesthetics in the student's own design ideas. The 'develop' criteria required by this standard means exploring and experimenting with design ideas, not resolving them. This could be shown by showing consideration of the waharoa in its context, and how the users would access it and pass through.

In future, to meet the NZQA requirements for authenticity, the source of the research images should be acknowledged and recorded. This also serves to recognise authorship, whakapapa, and heritage.

Achieved

NZQA Intended for teacher use only

WAHAROA RESEARCH

Origins

The Waharoa is a part of the Māori traditional practices. In Māori tradition, the waharoa is representing a gateway between the physical and spiritual worlds. The Waharoa is often used to mark the entrance of sacred spaces such as a marae (Māori meeting grounds).

SIGNIFICANCE

The Waharoa is usually adorned with intricate carvings that feature symbolic and patterns on the Waharoa. These designs often tell stories and convey important cultural values that they follow in the tribe. Like the whakapapa (genealogy), mana (authority), and wairua (spirituality). The carvings may also feature tukutuku (woven panels) or kowhaiwhai (painted scrollwork) patterns, which add color and texture to the design.



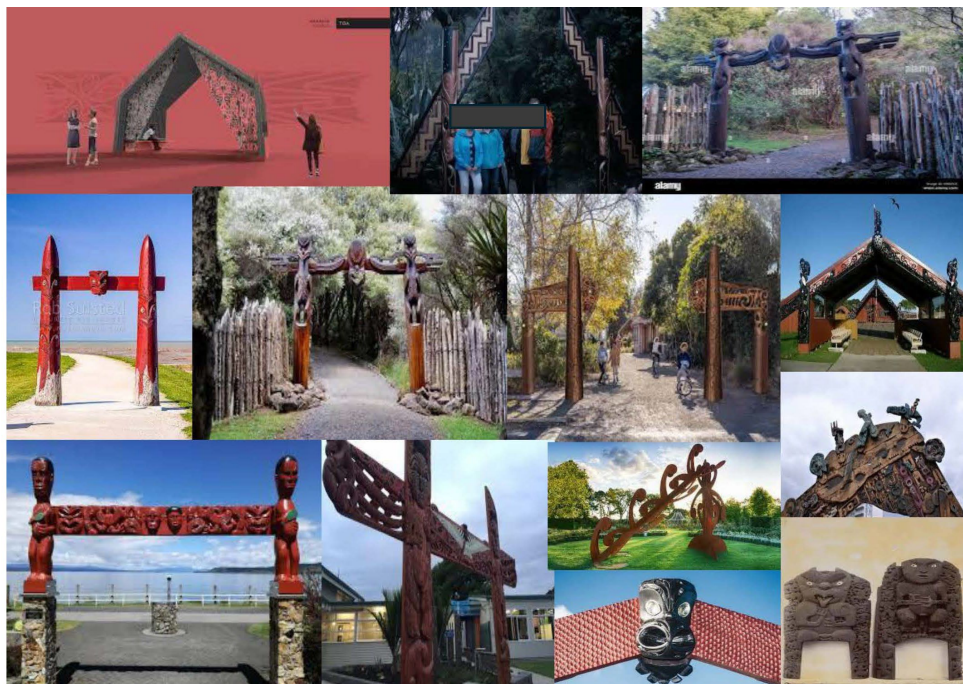
FUNCTION

The Waharoa is used to mark the entrance of a sacred space. The Waharoa is often used to mark the entrance to sacred spaces such as the marae (Māori meeting grounds) or wharenui (Māori meeting houses).

To express cultural identity: The intricate carvings and designs on the waharoa often feature the symbolic motifs that reflect the Māori cultural values, beliefs, and practices.

To honor ancestors: Many Waharoa feature carvings that reference the genealogy of the people or tribe that the waharoa represents.

To provide a sense of protection: The waharoa often features carvings or designs that are meant to offer the protection to those who enter the sacred space.



DESIGNER RESEARCH

DANIEL LIBESKIND

Daniel Libeskind is a world-renowned architect, artist, and designer known for his innovative and avant-garde designs. He was born on 12 May 1946 in Poland. But he immigrated to the United States with his family in the 1950s. That is where he studied music and architecture at the Cooper Union for the Advancement of Science and Art in New York City. Later received a degree in history and theory of architecture from the University of Essex in England.

His work often features angular shapes, geometric forms and sharp edges, and he has become known for his ability to create buildings that are not only visually striking but also emotionally evocative.

Libeskind is also an accomplished artist and designer, that works on display in museums and galleries around the world.



ELISAPETA HETA

Elisapeta Heta is a renowned architect from New Zealand. She was born and raised in Auckland and developed a passion for architecture from an early age.

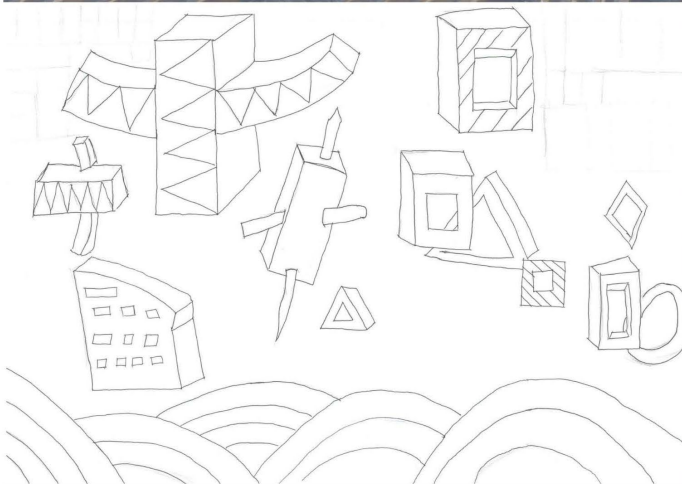
She studied at the University of Auckland and during her time there showed a particular interest in sustainable and environmentally friendly design, which would become a recurring theme in her work.

Heta started her career at Jasmax, one of the leading architecture firms in New Zealand. Here she worked on a variety of projects, including educational facilities, community centers, and commercial buildings.

Heta's work uses a lot of angles, patterns and natural materials that are not covered with paint. The materials are designed to be as natural looking as possible and the patterns she uses are often inspired by her Maori culture and the techniques of weaving.

" My whakapapa and my design thinking are inextricably linked. For me, nothing but beauty springs from the land and it's our job to honour it architecturally. "

EXPLORATION



Annotations -

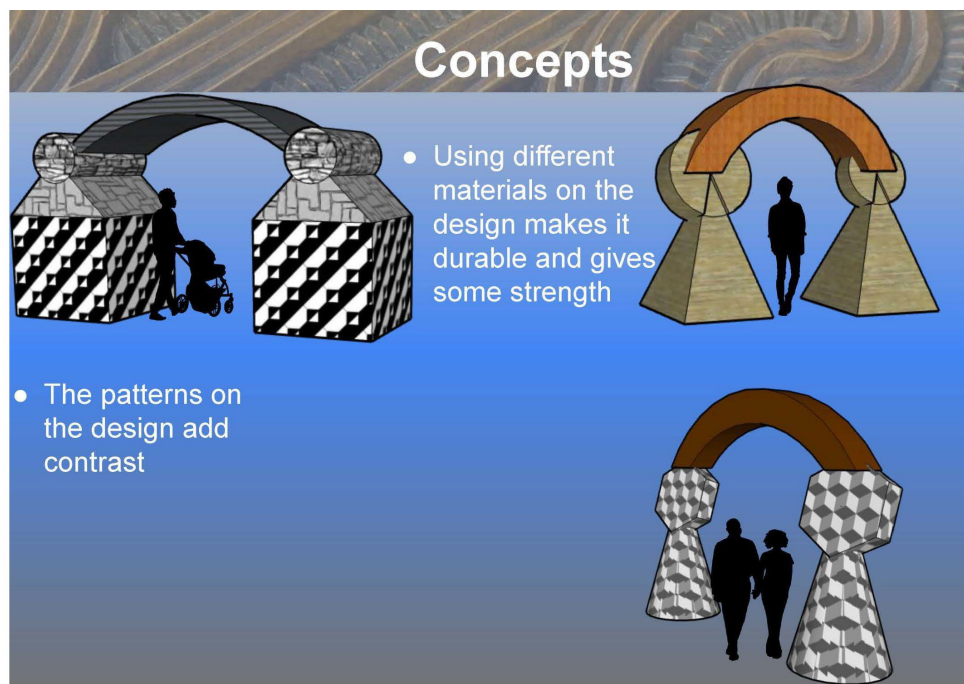
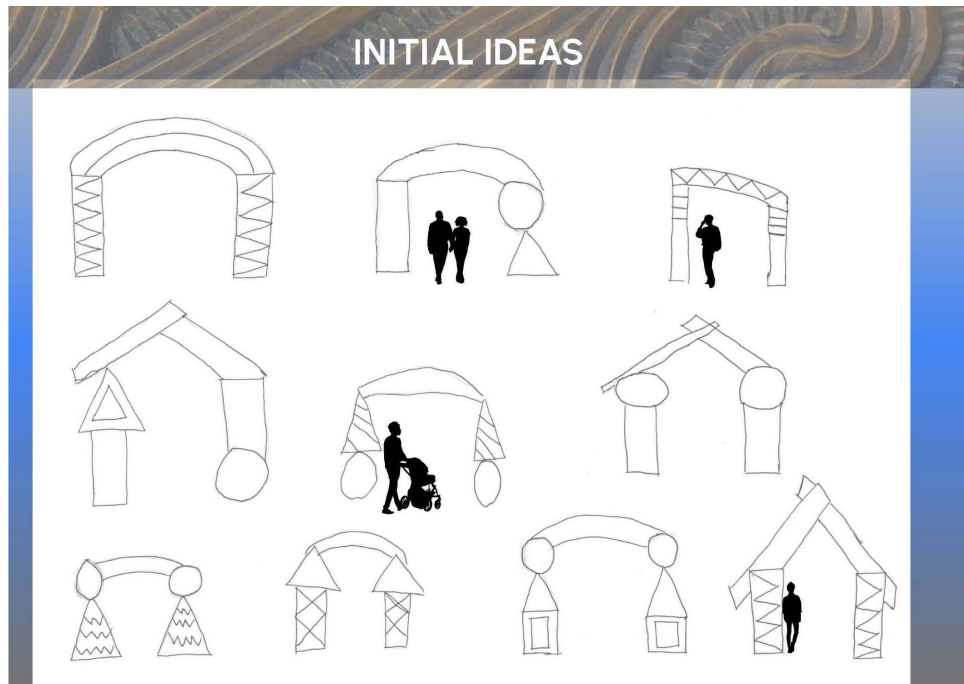
how your designs are unique and function in their own way.

Aesthetics

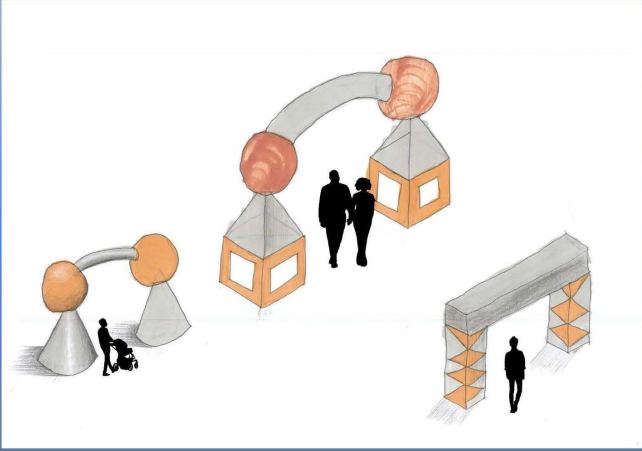
- Contrast: has contrasting materials and colours

Functions

- Strength: Is made with strong materials.



Concepts

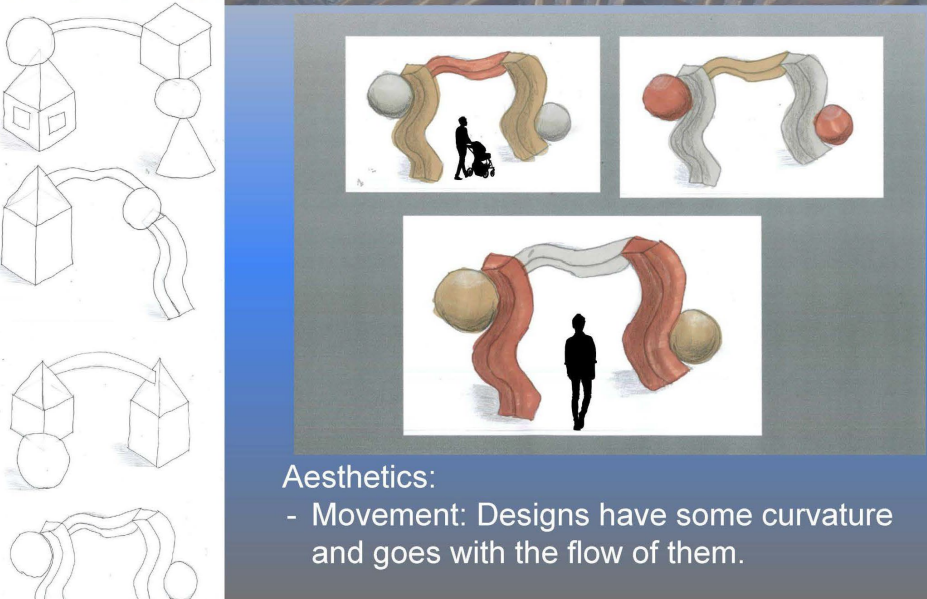


Aesthetics:

- Movement: Designs have some curvature and goes with the flow of them.

All of my designs have a formal balance to them

Development Form



Aesthetics:

- Movement: Designs have some curvature and goes with the flow of them.

