

No part of the candidate's evidence in this exemplar material may be presented in an external assessment for the purpose of gaining an NZQA qualification or award.



Mana Tohu Mātauranga o Aotearoa  
New Zealand Qualifications Authority

## **Level 3 Design and Visual Communication 2026**

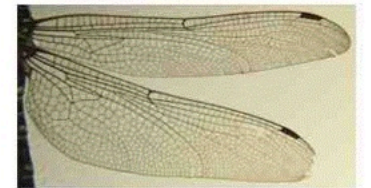
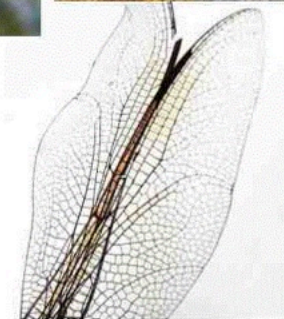
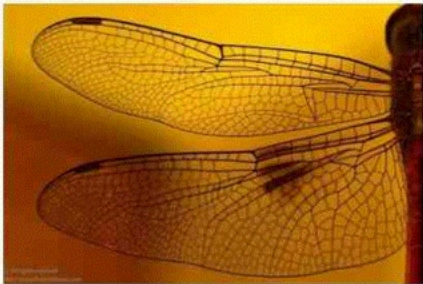
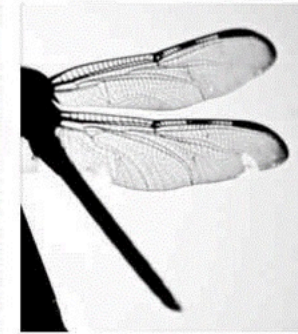
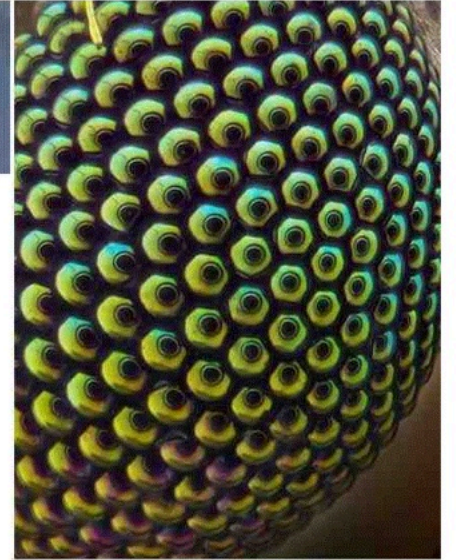
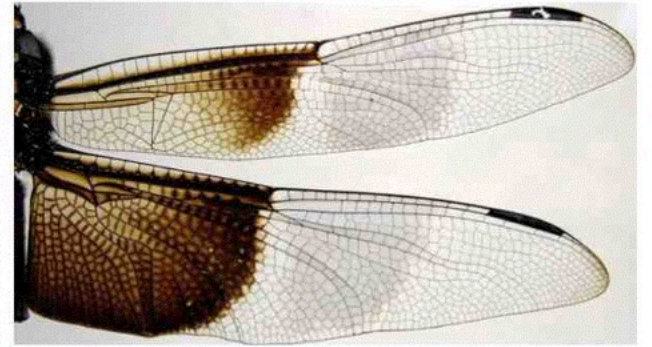
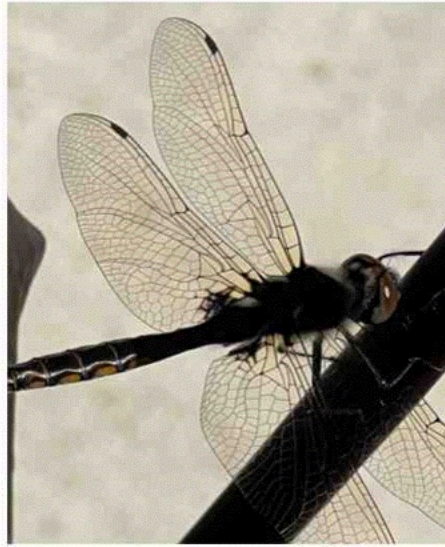
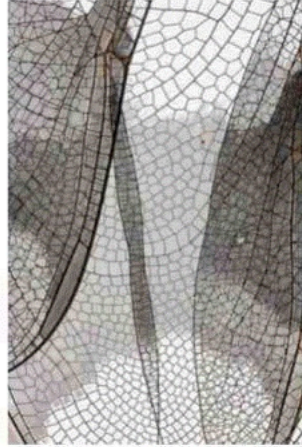
**91627 Initiate design ideas through exploration**

**SAMPLE EXEMPLAR – ACHIEVEMENT**

Y13 DVC

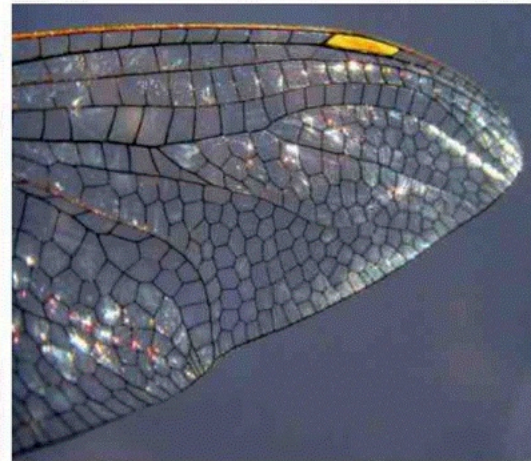
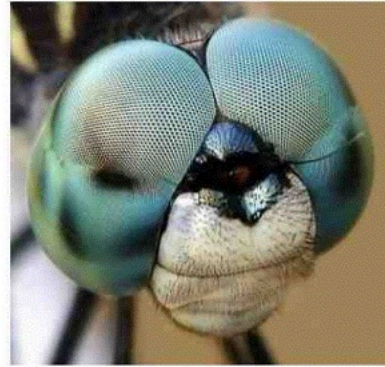
Auckland Botanical Gardens Pavilion

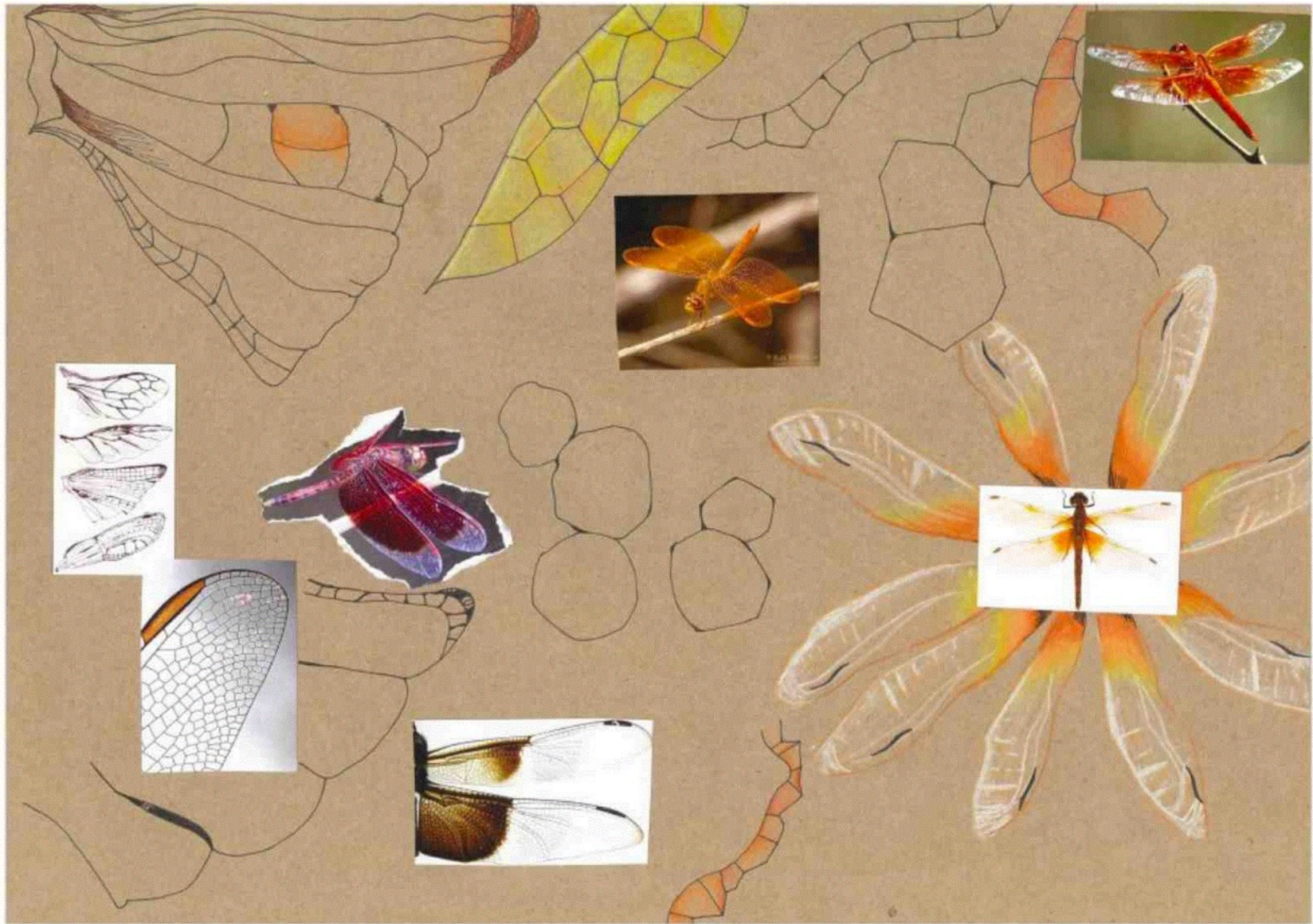
# Moodboard / inspiration



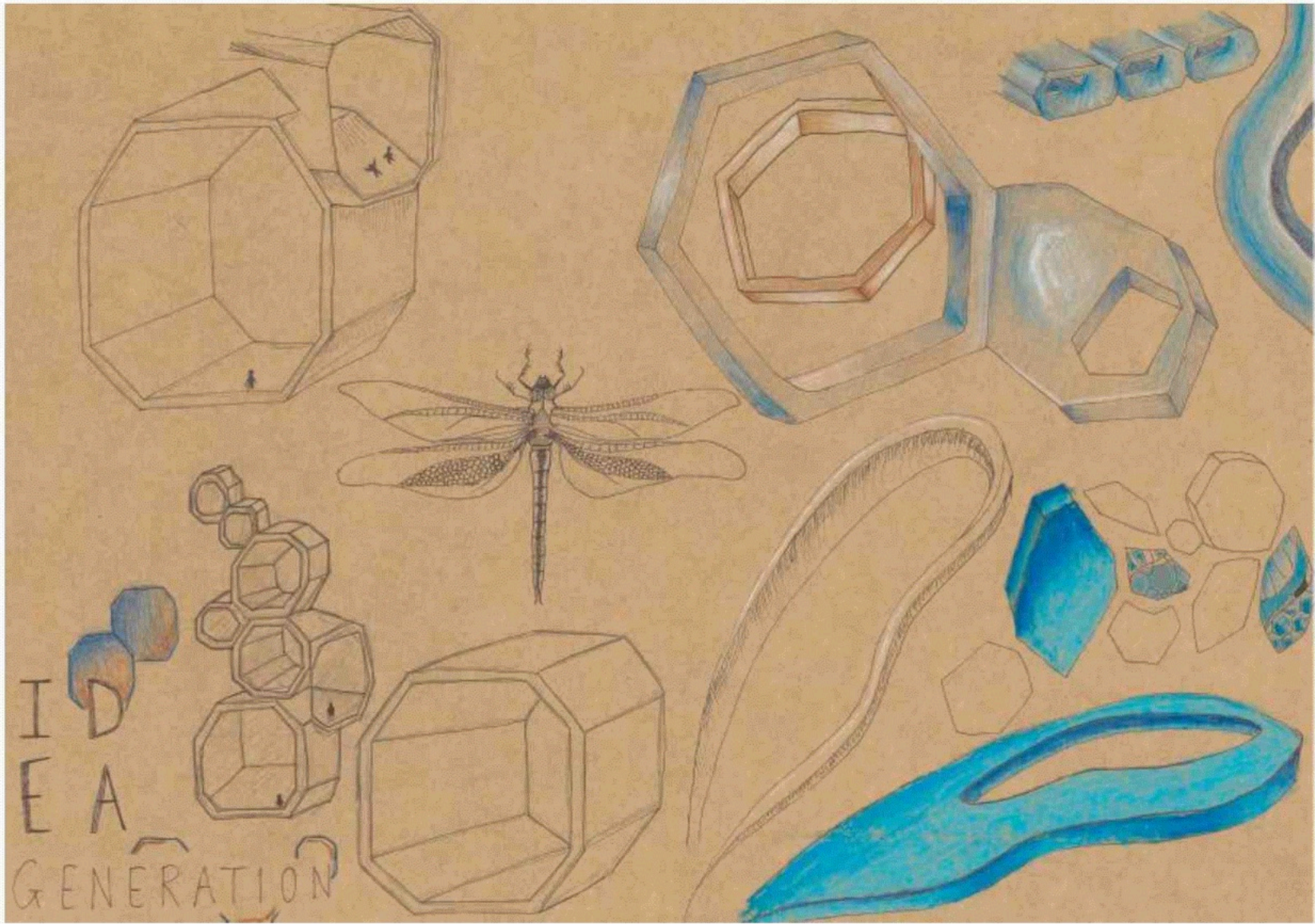
# Moodboard / inspiration

I chose dragonflies as inspiration for my building because of their shape and detail. Dragonflies remind me of beautiful rivers and tranquility. By incorporating the themes and shapes of the dragonfly I think I can create a building which represents exactly how I feel when I see a dragonfly.





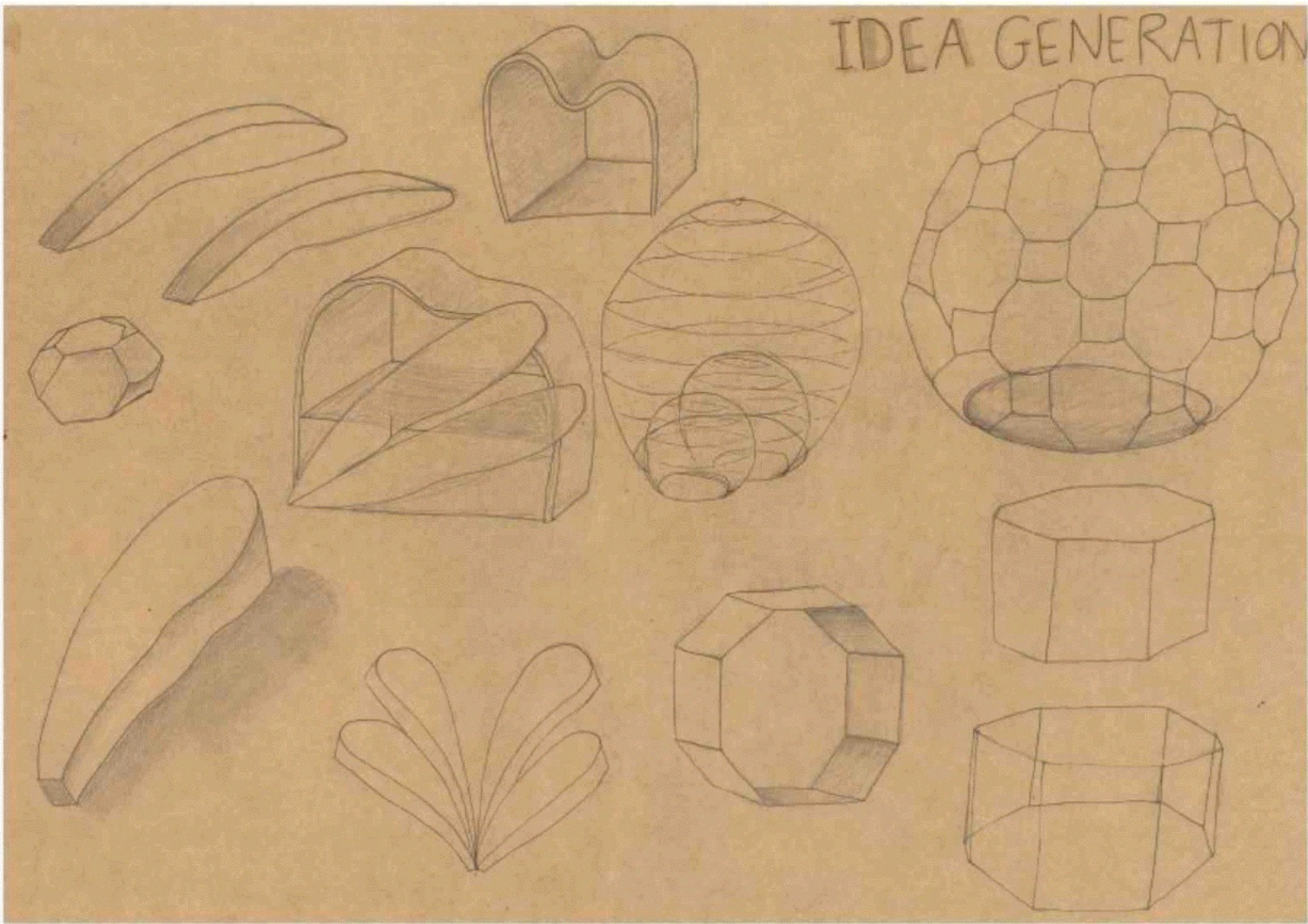


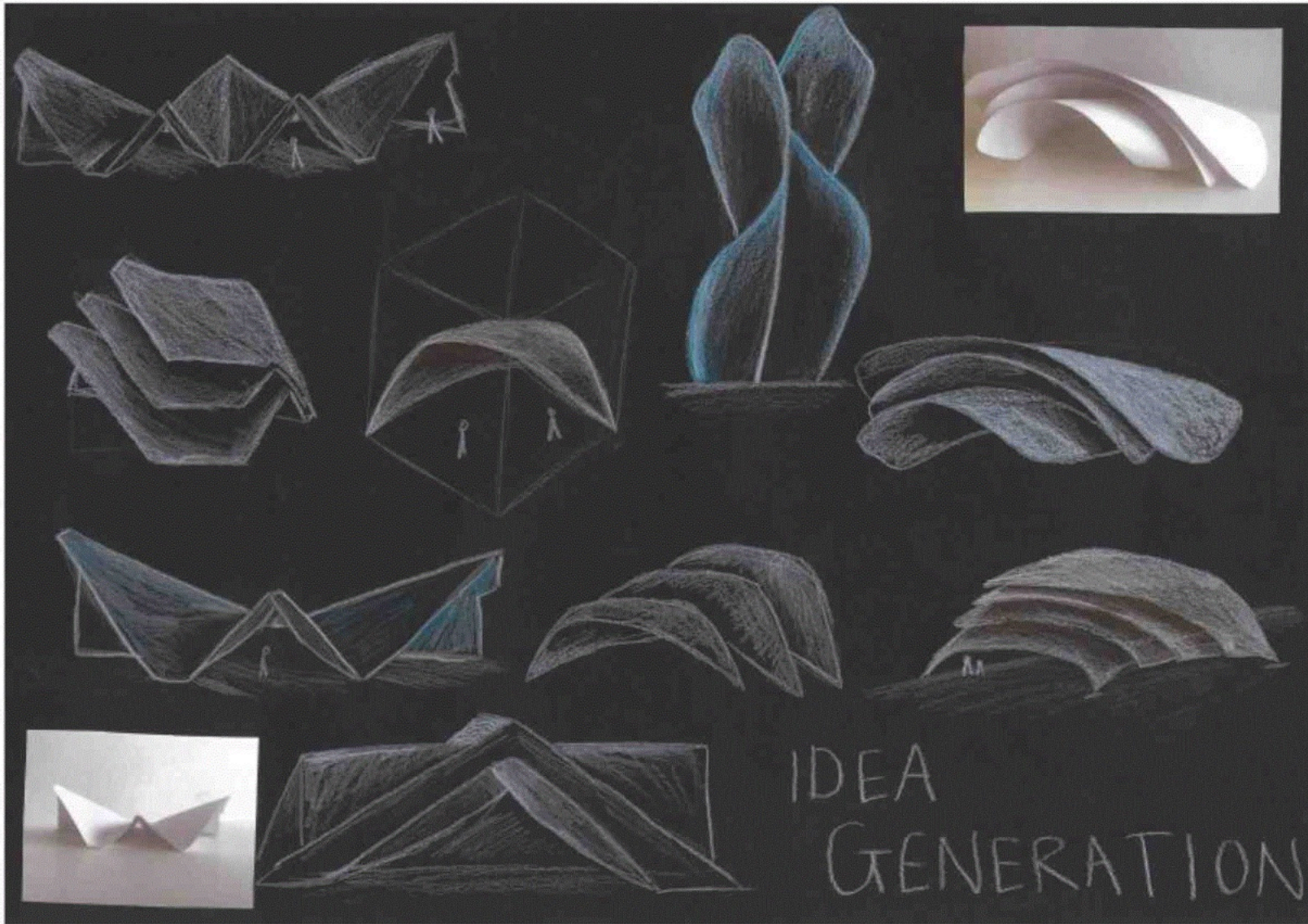


EXAGGERATION



IDEA GENERATION





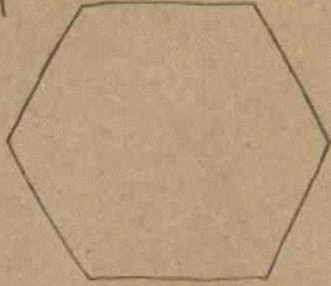
IDEA  
GENERATION



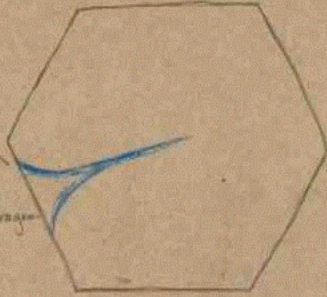
3D

EXPLORATION

1

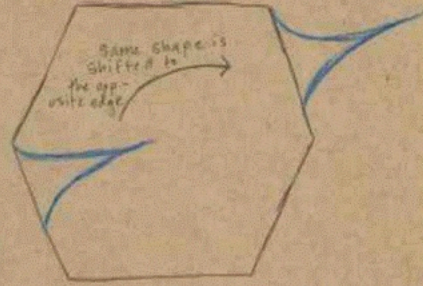


2



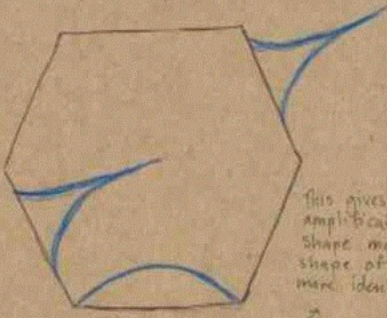
This shape reflects the shape of the dragonfly wing

3



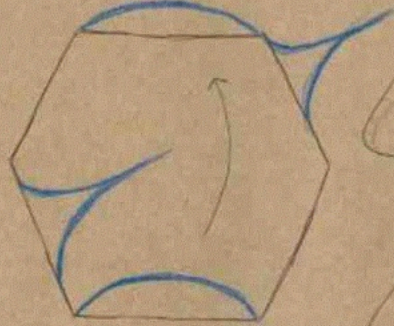
Same shape is shifted to the opposite edge

4

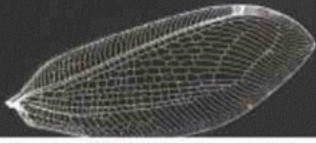
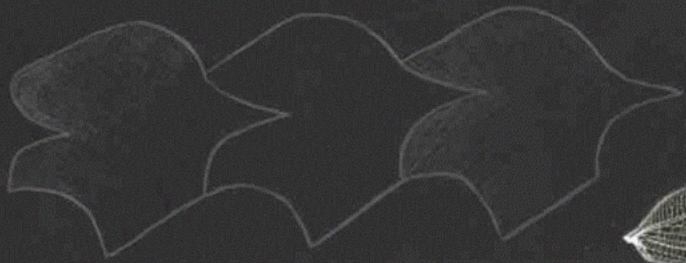
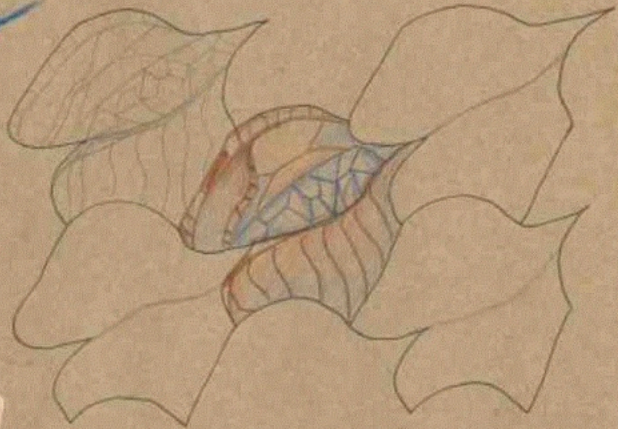


This gives more amplification to the shape making the shape of the wing more identifiable

5



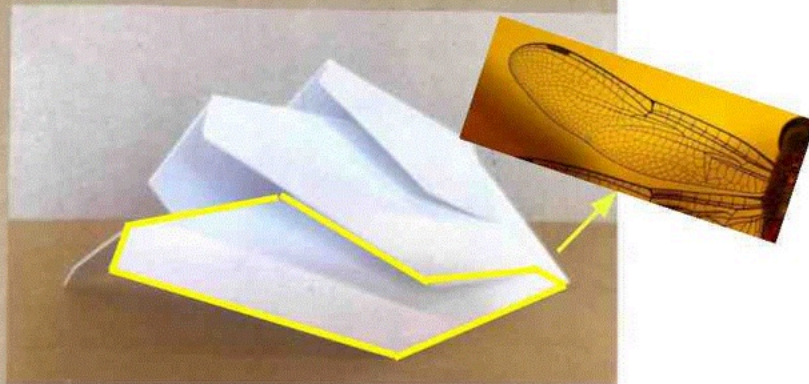
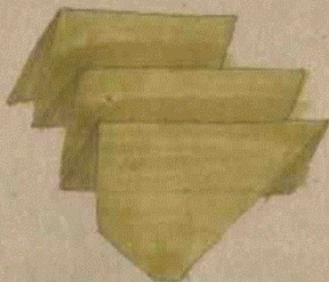
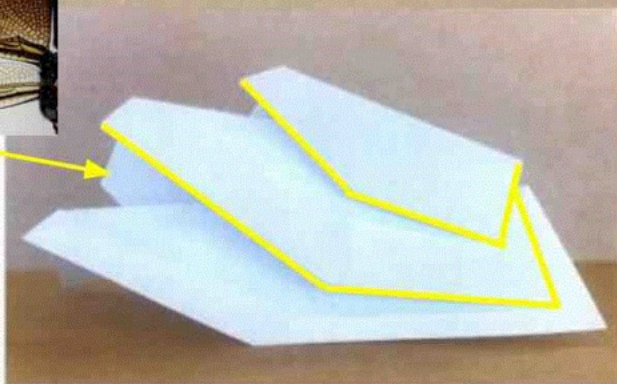
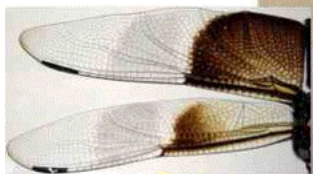
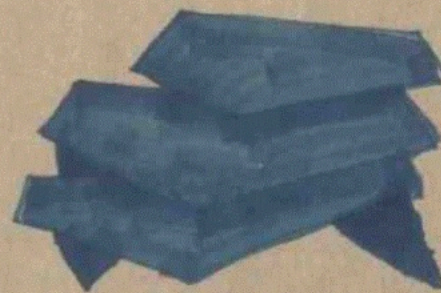
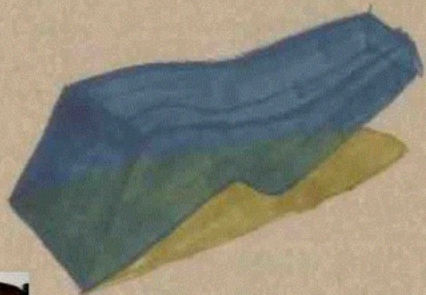
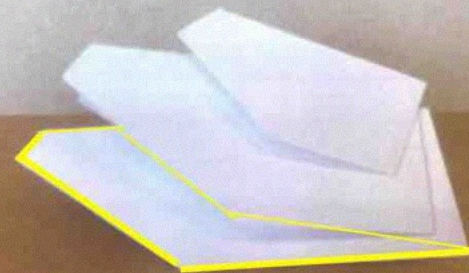
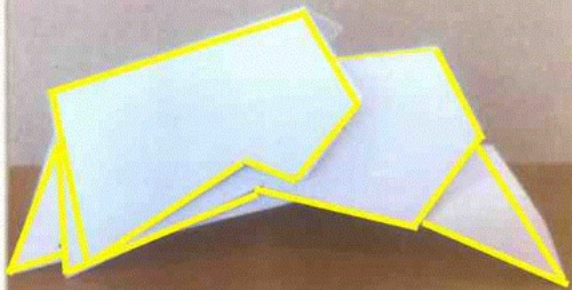
COMPOSITION:



T E S S E L A T I O N



IDEA  
CONFINEMENT

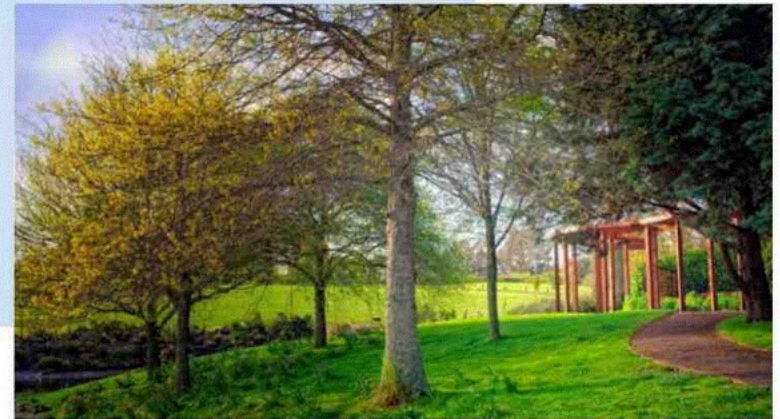


# Design brief

I will be designing a Pavilion which will act as a rest spot and viewing platform in the Auckland Botanical gardens.

## Specifications

- Protection from rain, wind, sun
- Open windows for viewing nature
- Seating areas with shade
- Accessibility
- Should be able to accommodate at least 25 people

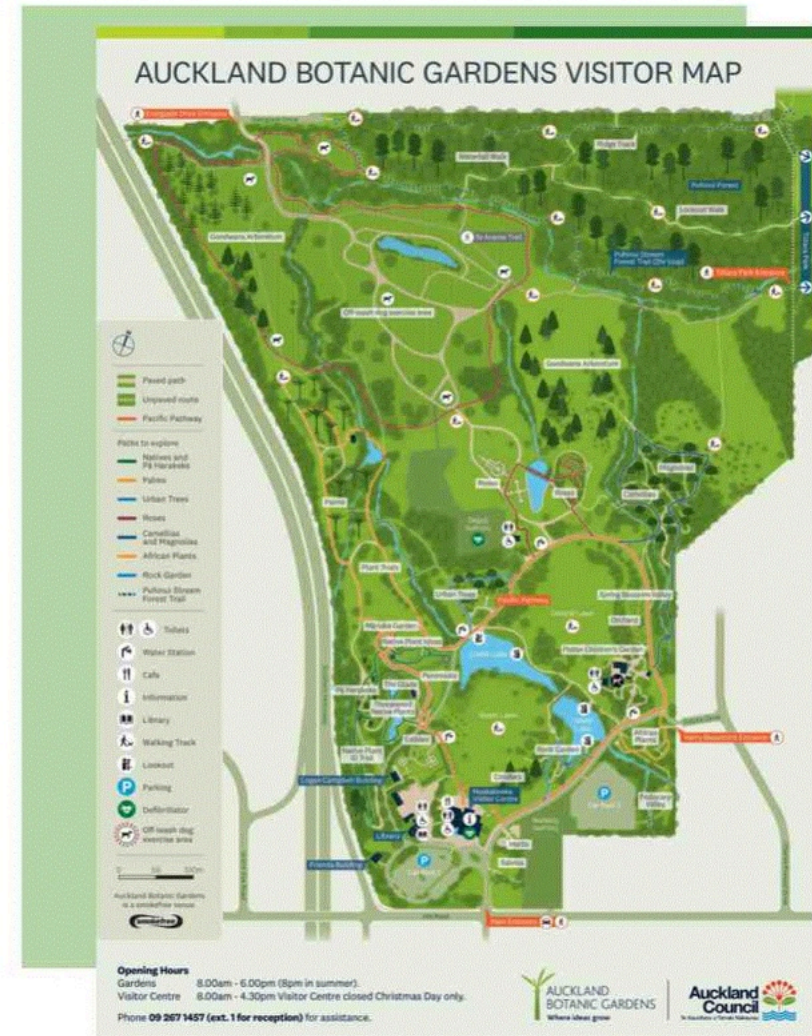


## Site analysis

Botanical garden

- Large space
- Lots of people
- Not many areas for resting out of the sun

The botanical garden is located in Auckland, Manurewa which is a 20 minute drive from the city with free entry. The garden covers 64 hectares and has many walking paths. I think a safe space away from the sun would benefit many people walking through the garden as the garden has many walking paths and areas I decided to use this site as I feel a viewing platform into the gardens would help entice more visitors. The garden holds more than 10,000 plants and was made in february 1982.



## Site analysis



The garden has many different areas showing different species of trees and nature along with beautiful lakes and sculptures. I want to put my design overlooking the nature trail so it has easy access from public to use the structure. I also want the pavilion to have a good view over the garden with no obstruction to the view. This is why I have decided to place the pavilion between the roses orchids and the spring blossom valley. Placing the Pavilion here would mean that it is closest to the most walking routes while also having a beautiful view of the plants and flowers around.



# Possible approach 1

This is my first possible approach inspired by a sketch done during my idea generation. While trying to incorporate the shapes and detail seen in the texture of the dragonfly.

The opportunities and constraints that could come from this building could be the limitation of viewpoints into the garden. The opportunities that comes from this design is the use of layers as I could make each layer a different story to view out into the garden. But I would quite like to make it so that the audience can view different angles of the garden.

## Opportunities:

- Each layer could be a different story to view the gardens
- Interesting shape
- Looks like the wings of a dragonfly
- could add windows and glass

## Constraints:

- Minimal view of surroundings
- Not many entrance points
- Minimal flow of space



## Possible approach 2

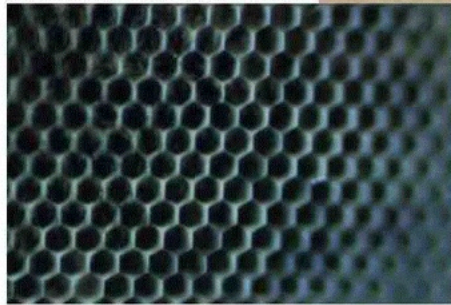
This is my second possible approach. This would not fit my design brief as it would not be suitable as a pavilion in a garden. In my exploration of 3d shapes I created a building using hexagons. This is a blown up version of that building. I liked how the shapes went together and how it could be used as a multi purposeful space.

### Opportunities:

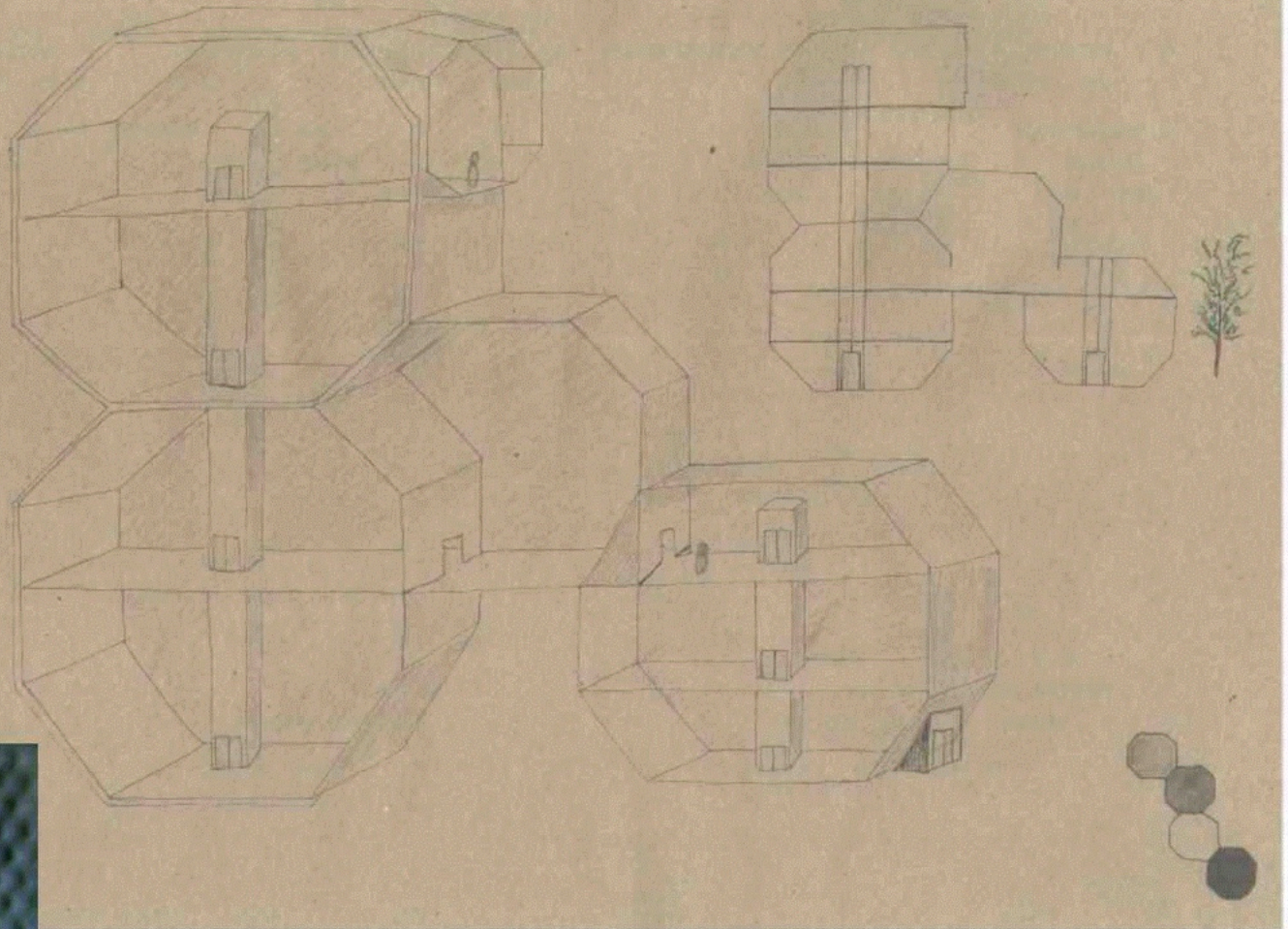
- Lots of space
- Good flow of space
- Good viewpoints
- Cool shape

### Constraints:

- Does not match the brief
- Could be too big



← Dragonfly texture



## Possible approach 3

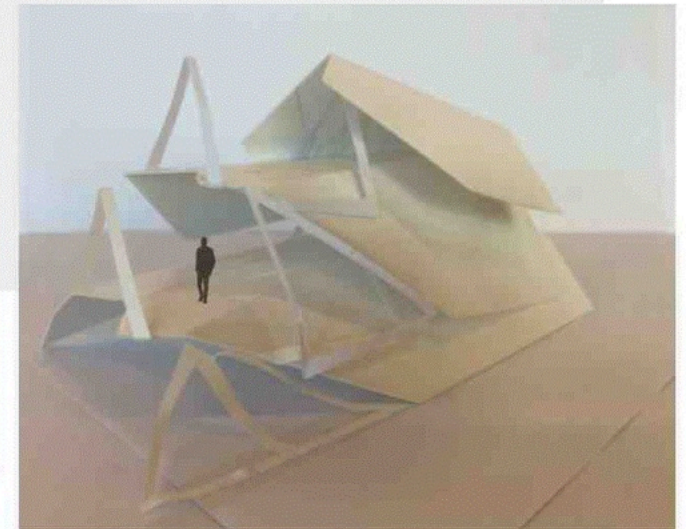
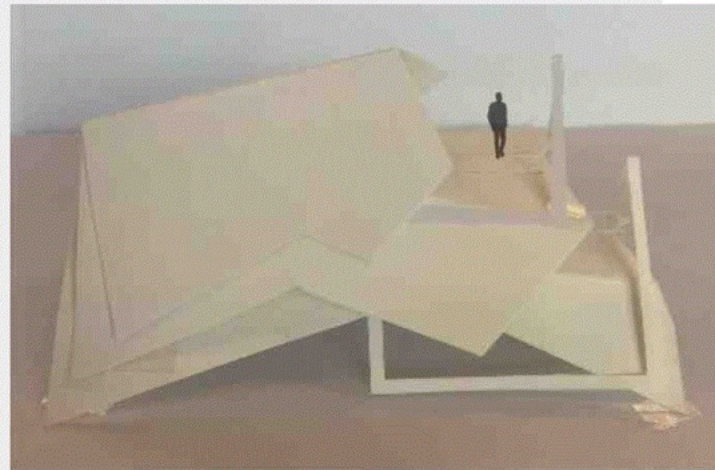
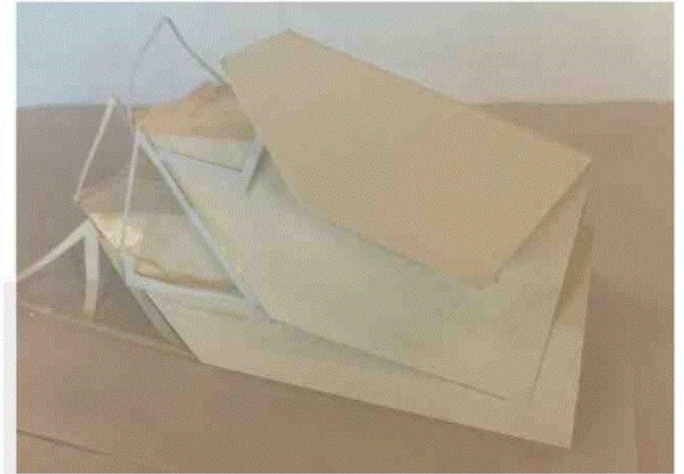
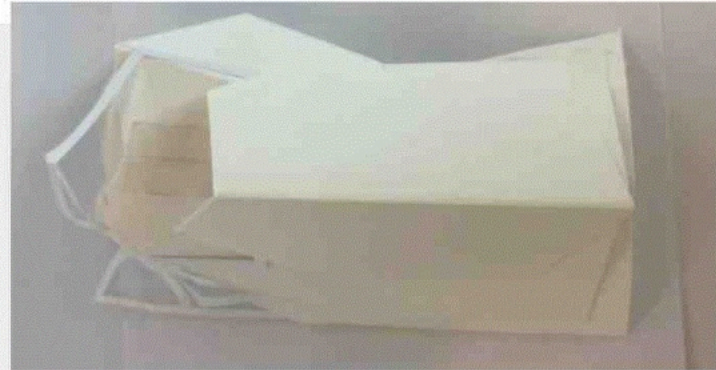
This is my second possible approach with inspiration from my first approach. The paper triangles would be the outline for where some glass would go. I have added a opening at the opposite side on the second level so that the view is more open.

### Opportunities:

- Could add more windows
- The shape of the bottom could change
- With the levels I could design some stairs and a ramp for accessibility.

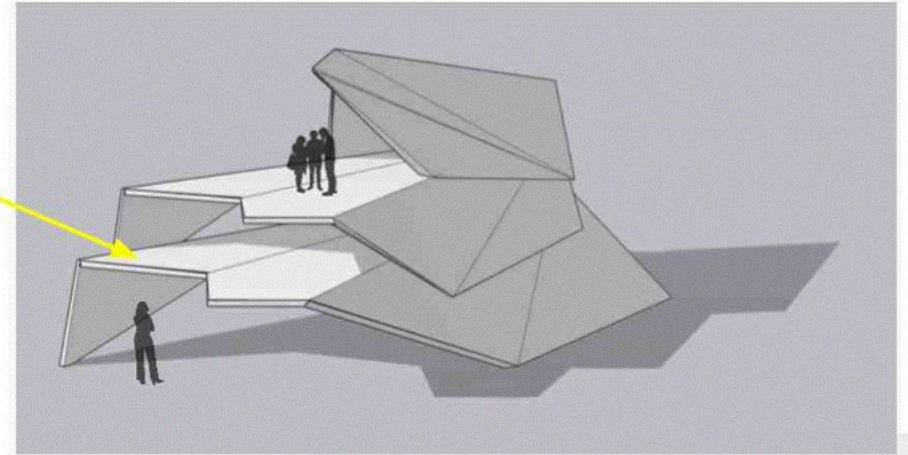
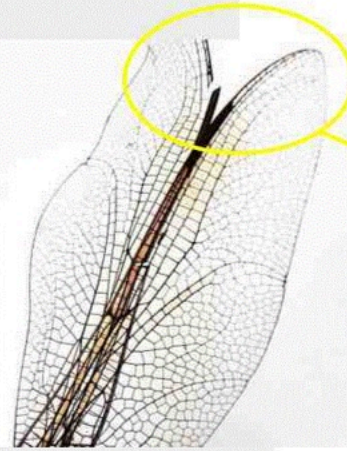
### Constraints:

- One angle of the garden is covered from view



## Possible approach 4

This is my third possible approach. With this render I tried to make the shape of the dragonflies wing. Next time I will make the shape look more aerodynamic and consistent. The top half of this approach looks unconnected. To connect it I could try follow the lines in the first and second layers.

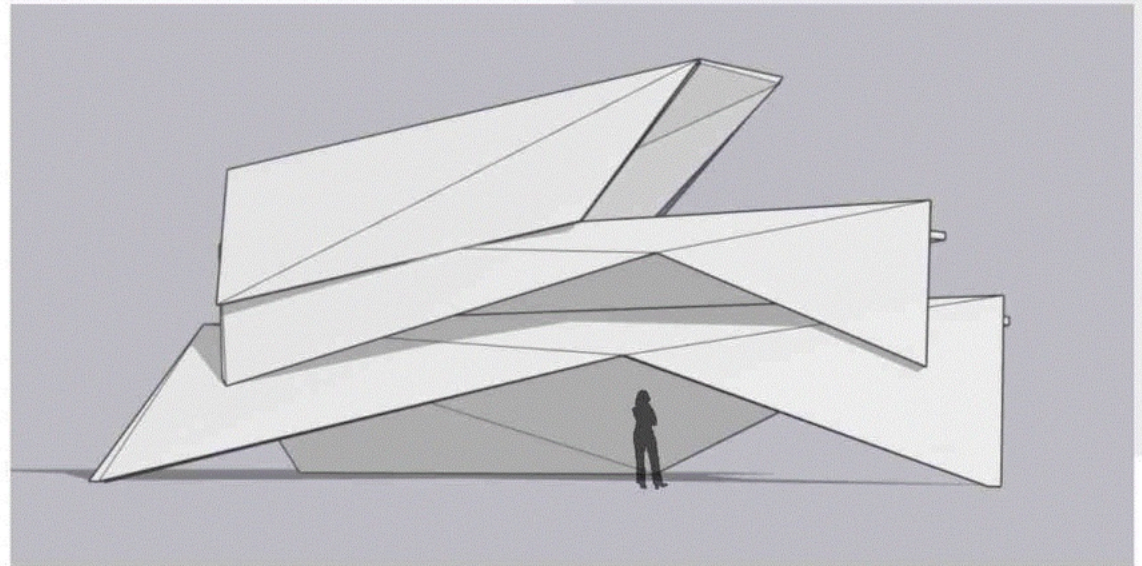


### Opportunities:

- Wide open viewing space
- Could make the top shape more triangular
- The second layer could be more symmetrical

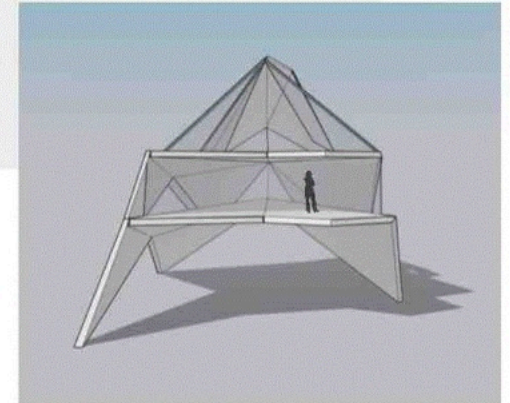
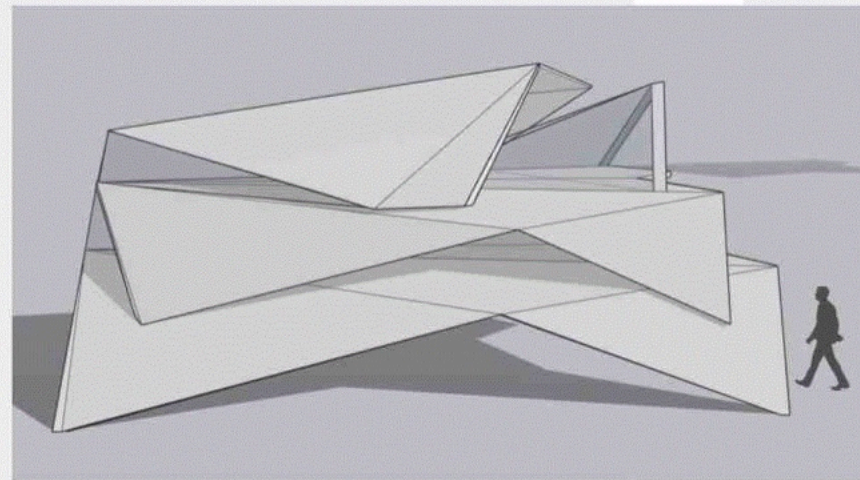
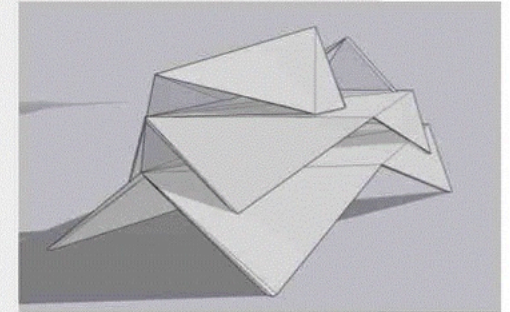
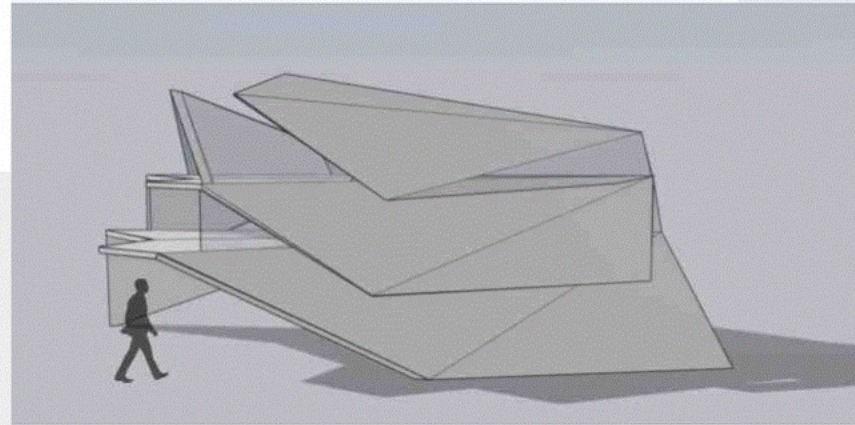
### Constraints:

- Not a lot of shade
- No protection from wind or rain



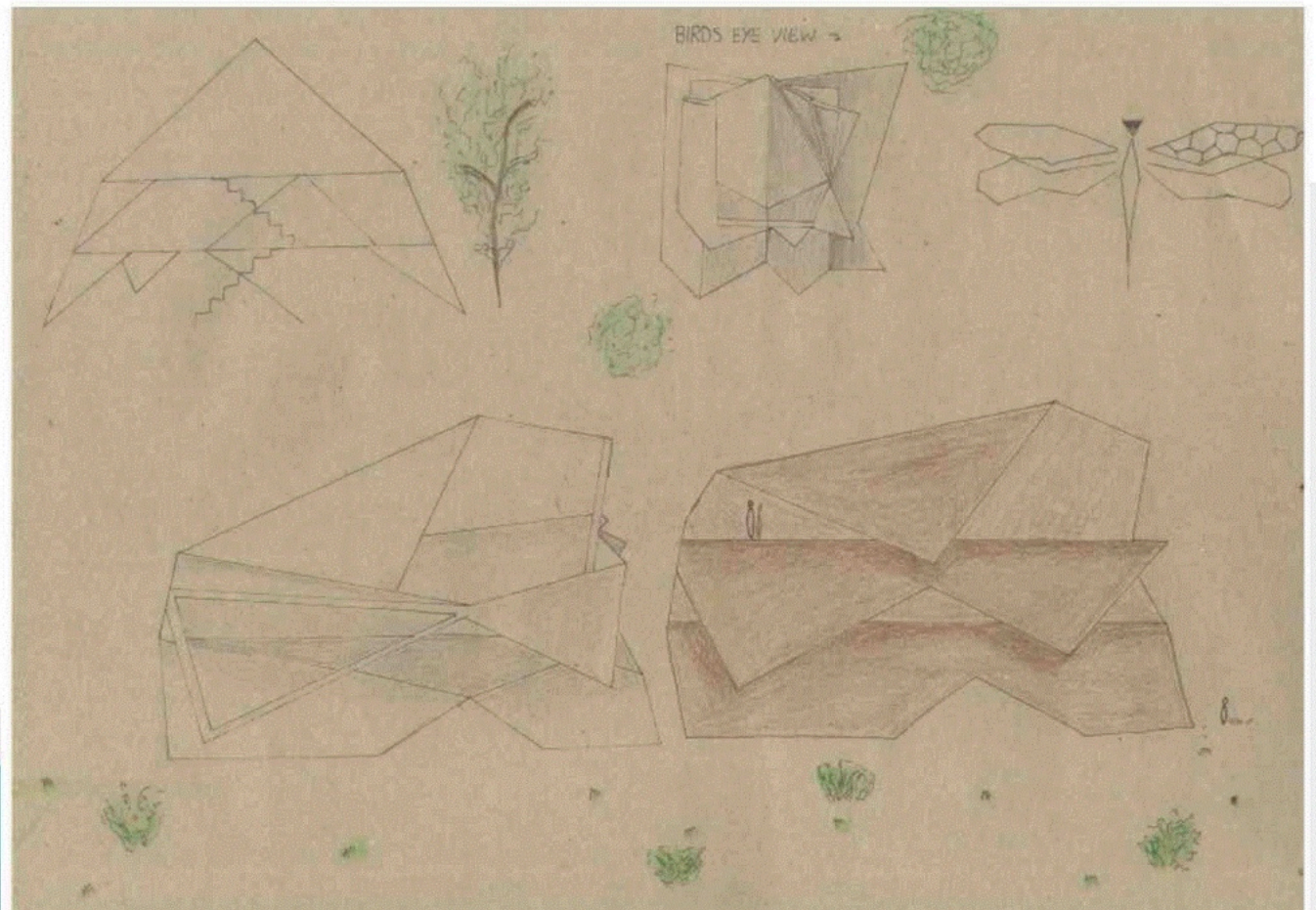
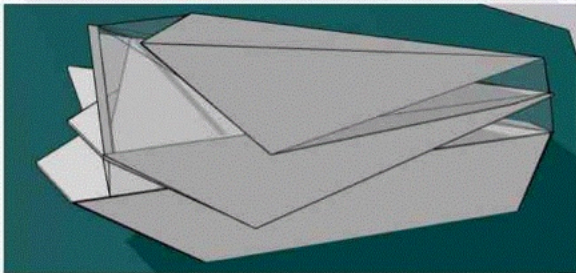
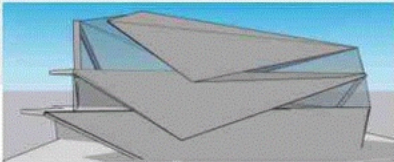
## Possible approach 5 - chosen approach

I have chosen this approach because it matches the most to my brief. There are also a lot of opportunities to edit and refine this building which will help resolve it into a perfect pavilion. The shapes and form of this approach represent the shape of the dragon flies wings to me which I think will help it feel apart of the garden.



## Chosen approach refined

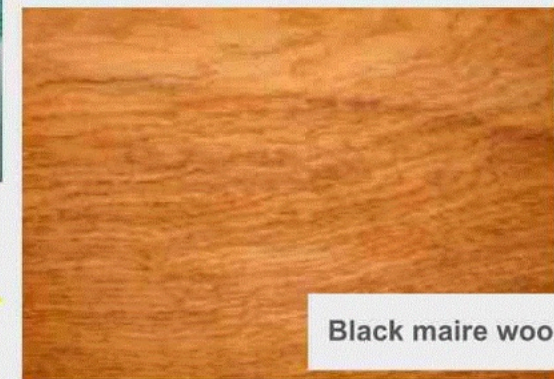
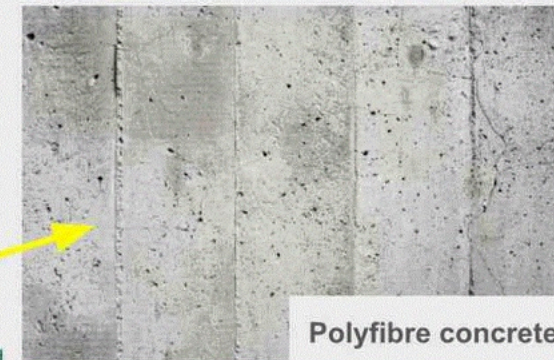
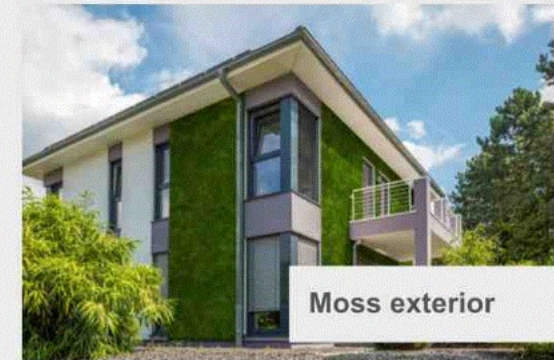
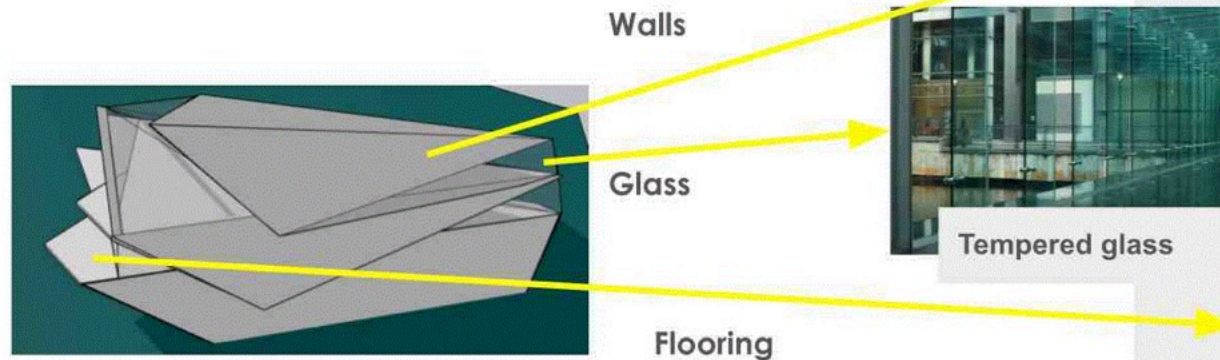
The refined version of my pavilion has more windows and more glass to prevent safety hazards of people being able to walk off the platforms. I have chosen this approach because it matched my specifications from my brief the best. This approach has multiple viewing points with protection from sun, wind and rain while also adding a stylistic approach on a pavilion. My next steps for this design is to make sure it will be accessible and sturdy.

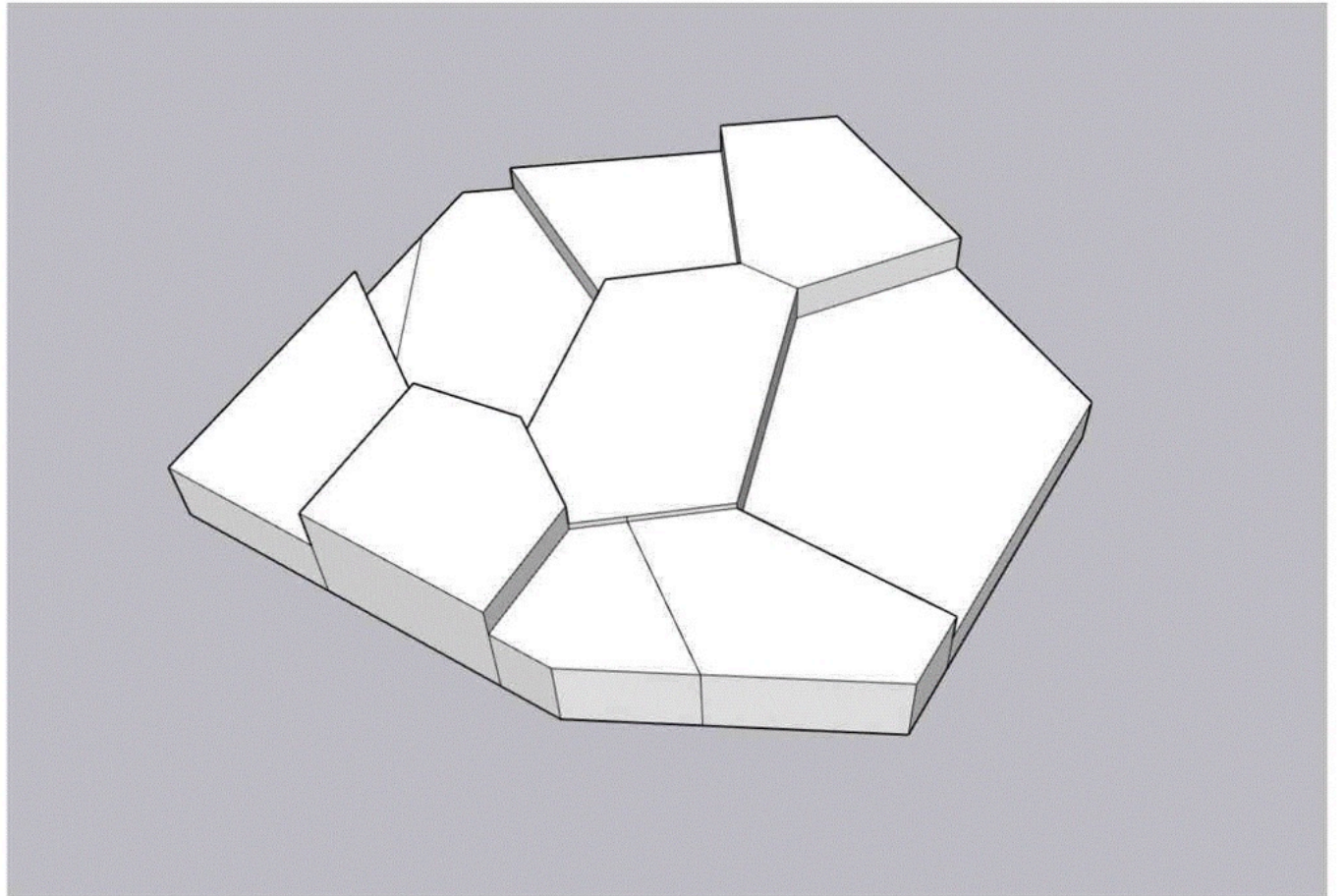
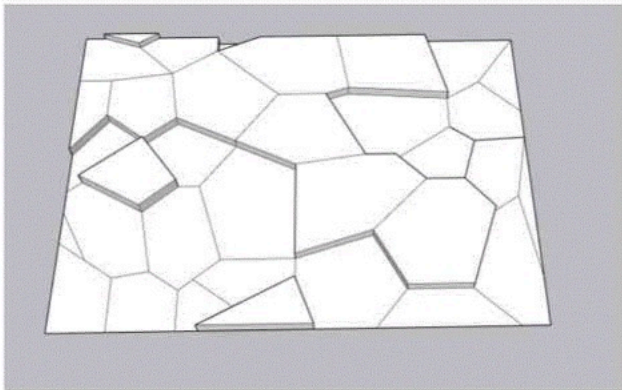
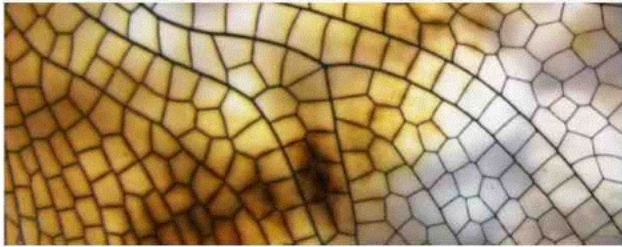


# Materials

Material: polyfibre concrete. Flooring: Wood - *Notelaea cunninghamii*.  
I think polyfibre concrete will be the best material for my pavilion to help it in a moist environment like the garden. It will also be very durable and reasonably easy to build out of.

<https://tocco.earth/article/facades-that-live-respyre-moss-covered-revolution/> This website talks about the benefits of moss on buildings and to help to atmosphere of the botanical garden I think this would benefit my pavilion greatly. For the floor I want the pavilion to be as connected to the garden as possible. Wood would help make the inside of the pavilion stronger along with the steel framework. Specifically I would use *Notelaea cunninghamii* also known as black maire as it is a very resilient type of wood grown in New Zealand. For the glass in the pavilion I will be using toughened (tempered) glass. The benefits of this type of glass will be the way the glass will reflect heat keeping the pavilion warm in winter and cooler in the summer.





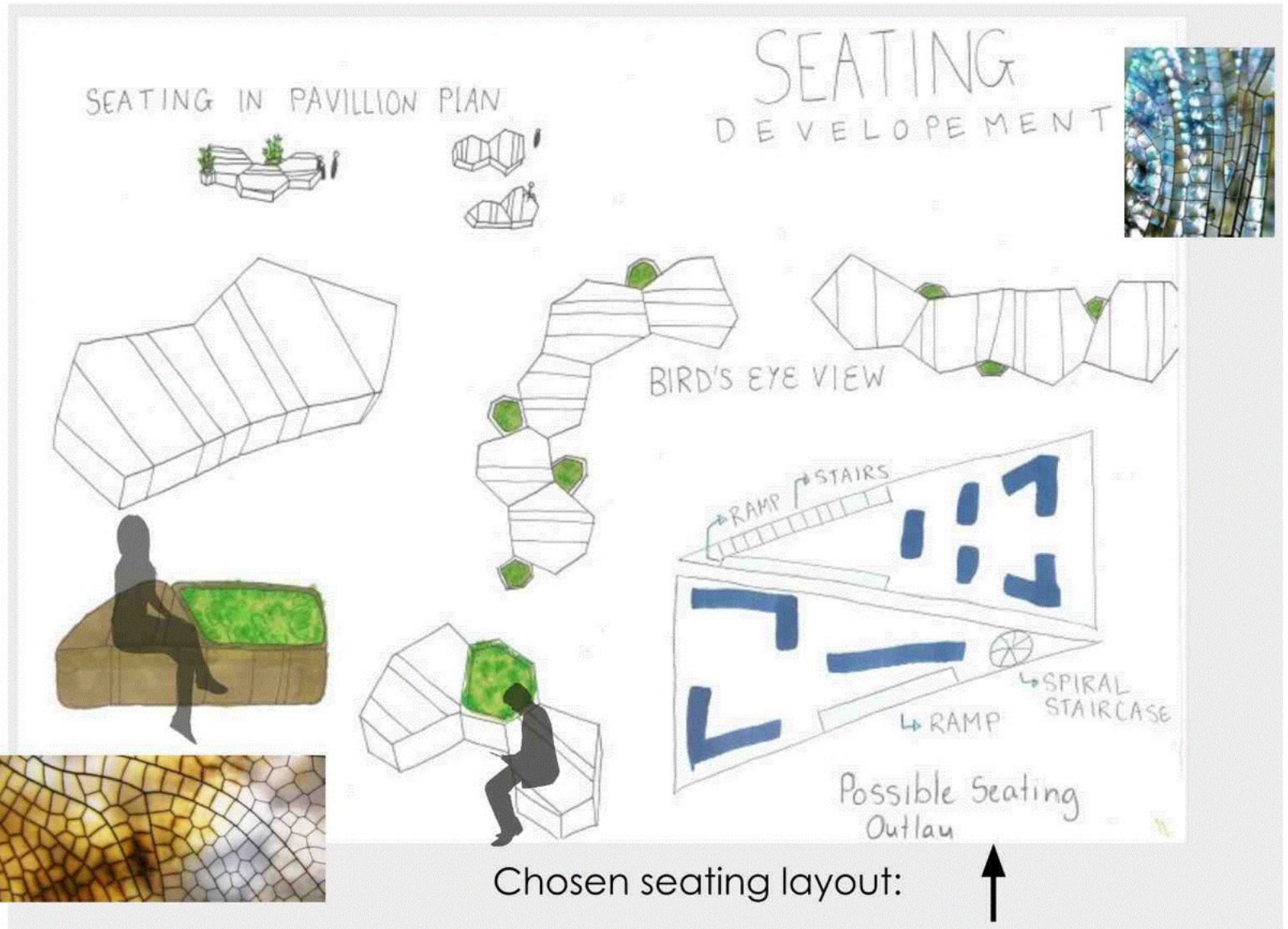
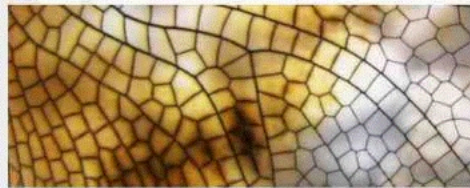
This modular seating design highlights the textures seen in dragonfly wings and adds to the design of the pavilion by giving texture to the "wings" through the glass panels.

Opportunities:

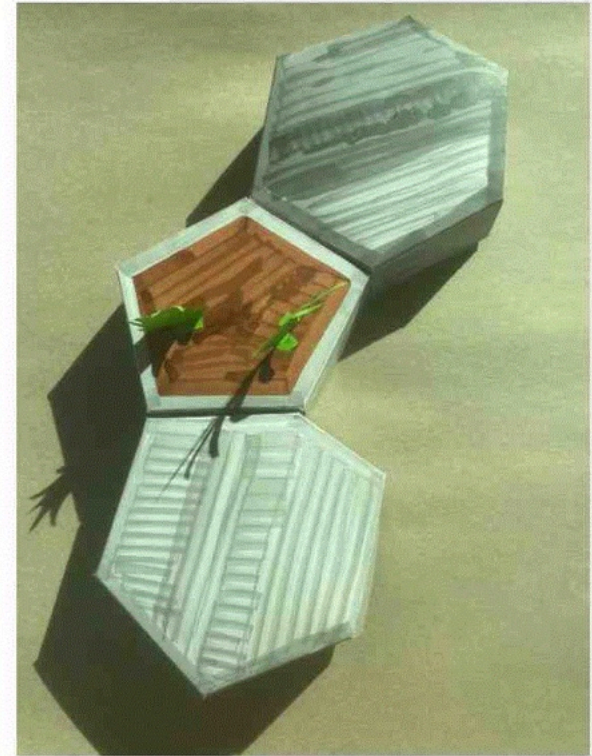
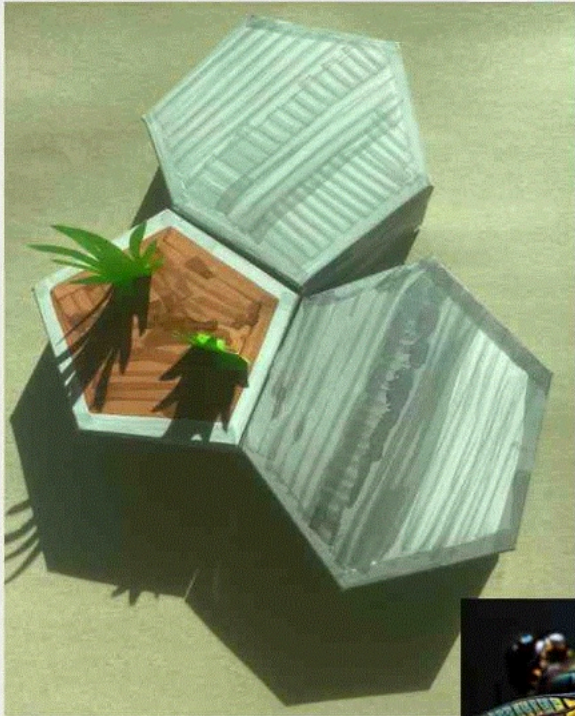
- Lots of seating options
- Can seat groups or individuals
- The material could represent a dragonflies wing texture

Constraints:

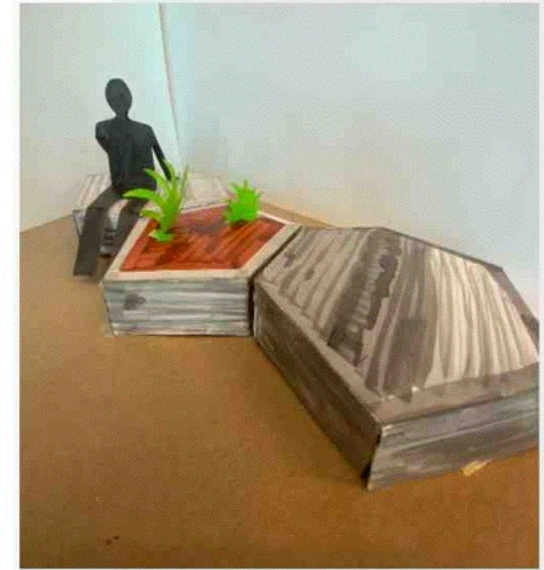
- Plants would need regular care



# 3D model of modular seating



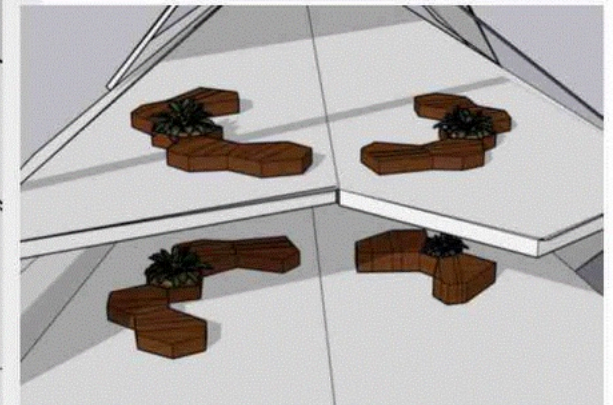
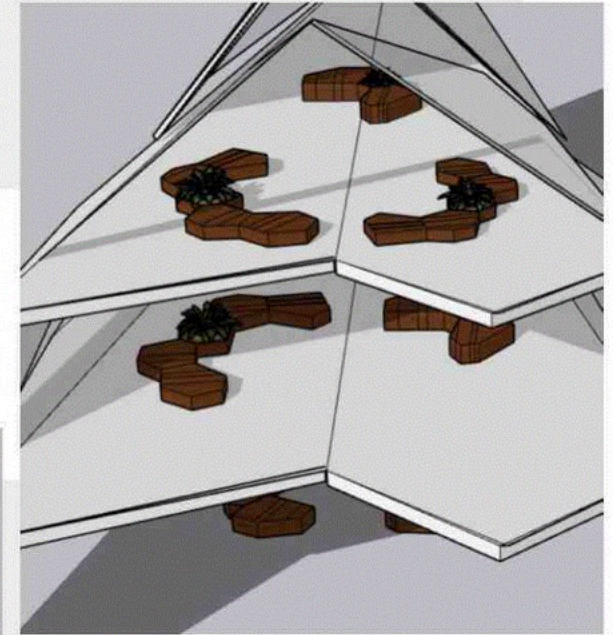
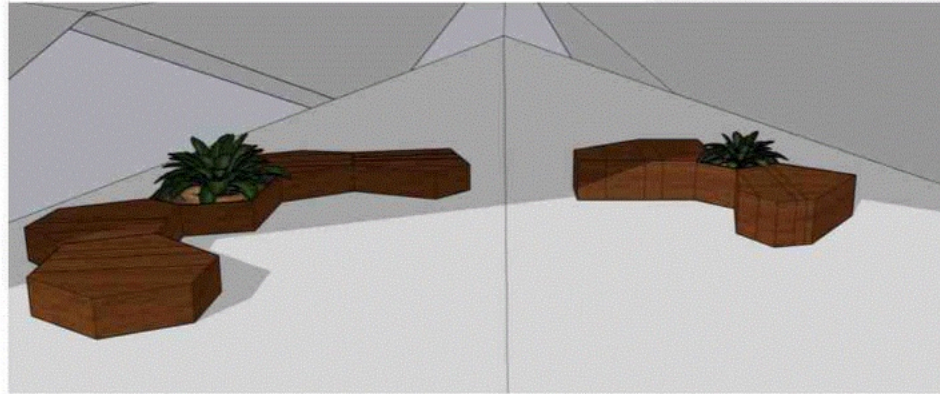
## 3D model of modular seating - resolve



The opportunities with this kind of seating would allow a number of people and groups to sit down at the same time while still keeping the flow of movement high throughout the spaces. The use of plants incorporated in the seating also connects to the location of the botanical garden. I am hoping to add some more greenery to the outside of the building as well so that it doesn't stand out too much when looked at from the outside among the garden.

# Seating In Pavillion

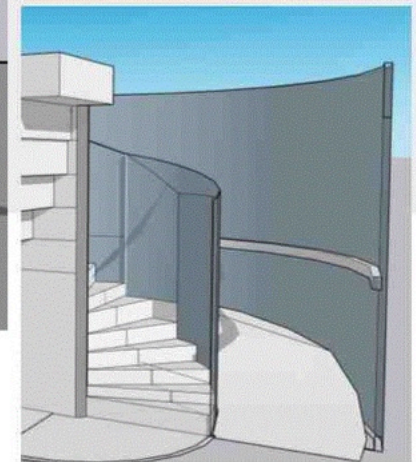
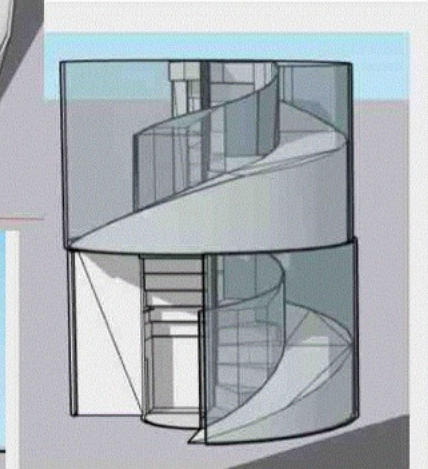
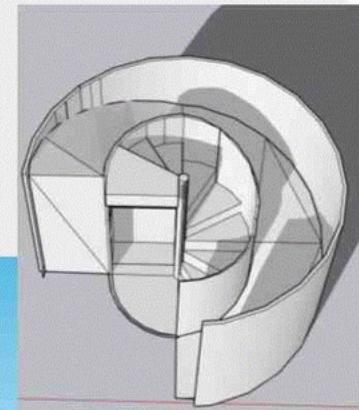
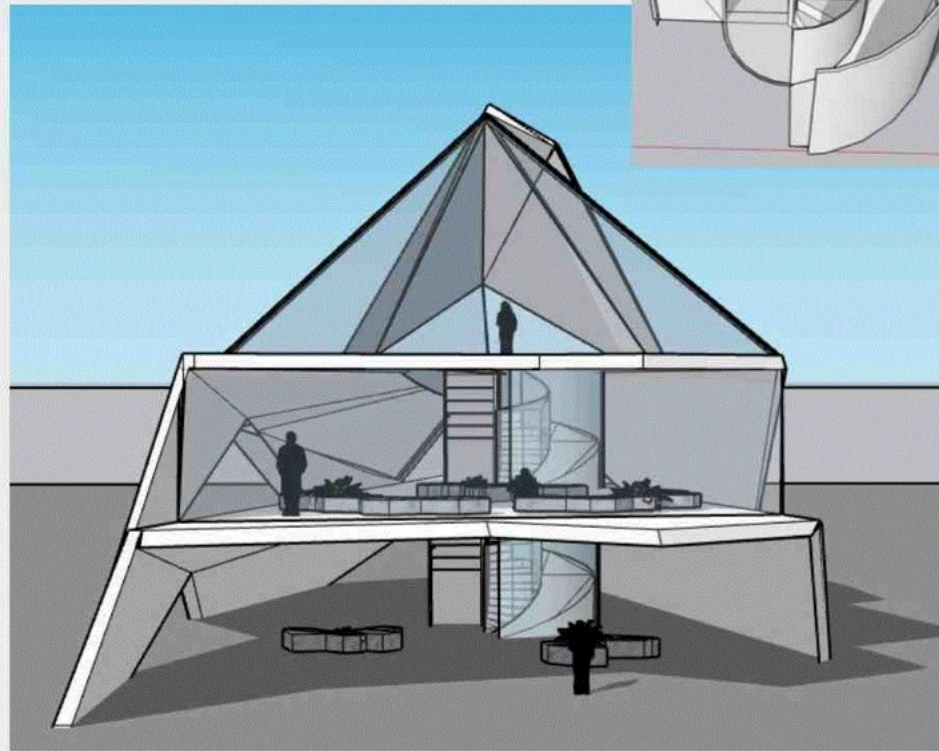
Opportunities and constraints of this seating design and arrangement: The opportunities that arise with this design is that its modular and can seat many people. It also allows for comfortable movement in the space while also being able to relax while enjoying the surroundings. The constraints around this design are found in the use of plants.



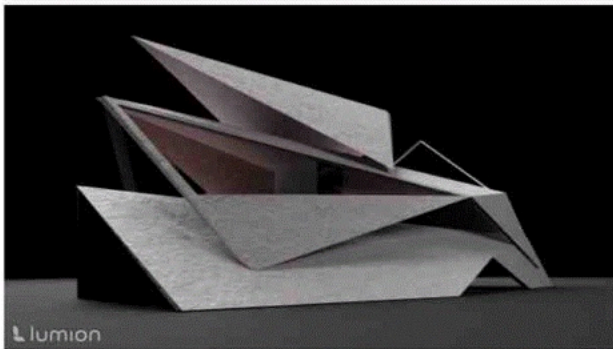
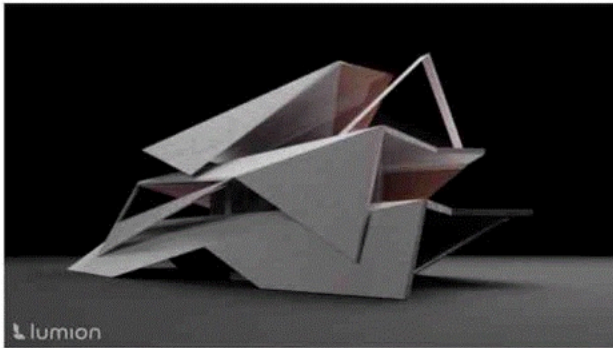
## Accessibility Stairs + ramp inside building

This is the design I have created for access into the viewing platforms in the pavilion. I decided to change the ratio of size for the stairs so that I would not have to layer the design. If I did layer the stairs it made it too high and extremely difficult for wheelchair users to enter and exit safely. The ramp in my initial design was too steep which made me question the health and safety of the people who would use it. I solved this constraint by giving the ramp a longer distance and adding a rail which can be helpful for anyone going up the ramp. The materials I would use for this design would be reinforced glass for safety and cement for the durability with grip tape to prevent any slippage.

Ramp with arm rail



# Final design rendered using lumion + model



# Final poster and model



## Sample Achievement exemplar

**Subject:** Design and Visual Communication

**Standard:** 91627

**Total score:** A4

Grade score	Commentary
A4	<p>Parts of the dragonfly are regenerated as starting ideas using abstracted forms. Possible approaches begin to lead to functional design ideas, with a clear link to the starting ideas with the use of layered wings. Some seating generated also consolidates the clear derivation from starting ideas to reach A4.</p> <p>The candidate would need to further explore and extend the design to show sufficient evidence of purpose in relation to its design context for M5.</p>