

No part of the candidate's evidence in this exemplar material may be presented in an external assessment for the purpose of gaining an NZQA qualification or award.



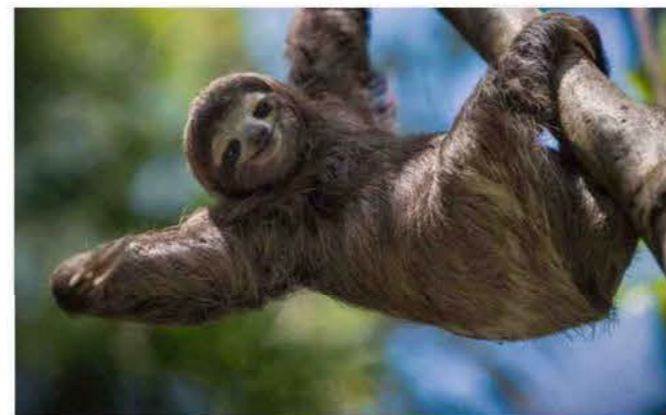
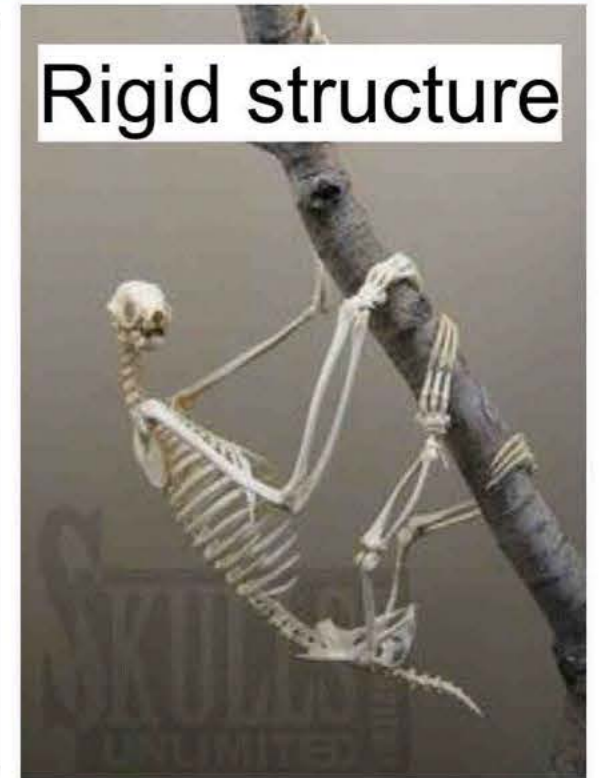
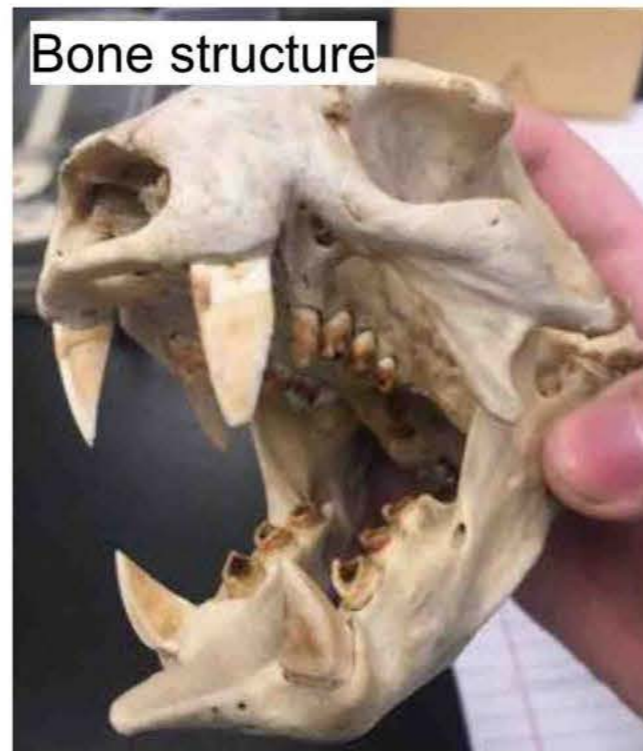
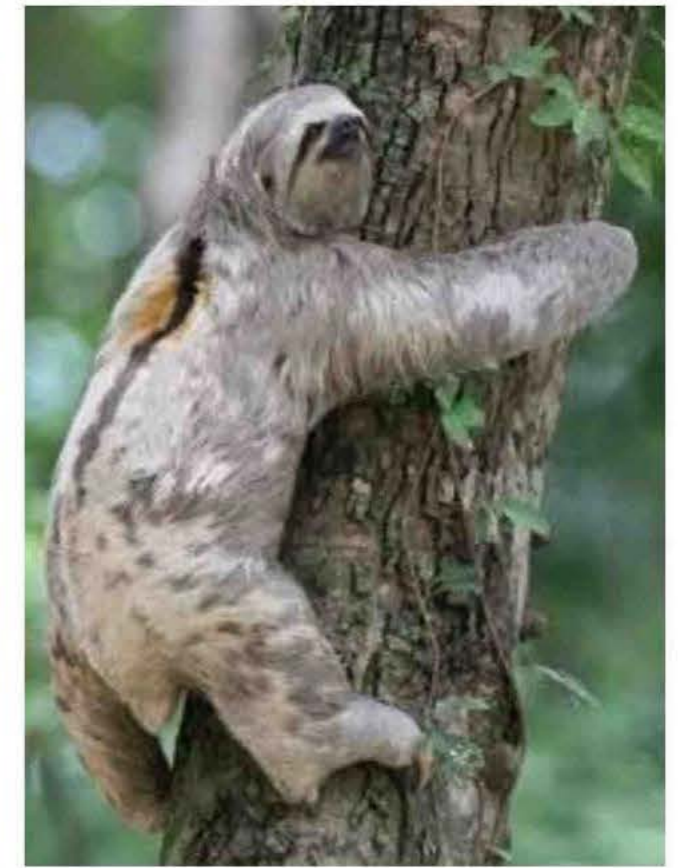
Mana Tohu Mātauranga o Aotearoa
New Zealand Qualifications Authority

Level 3 Design and Visual Communication 2026

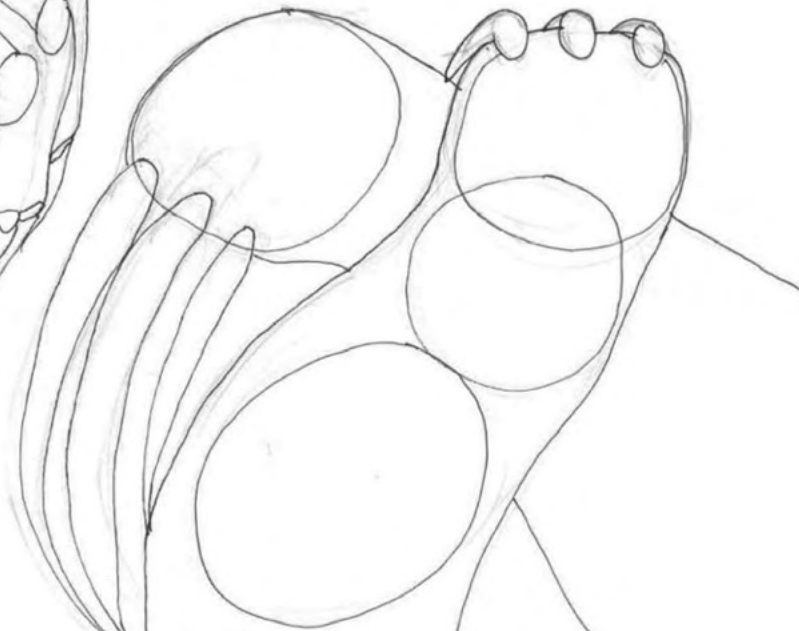
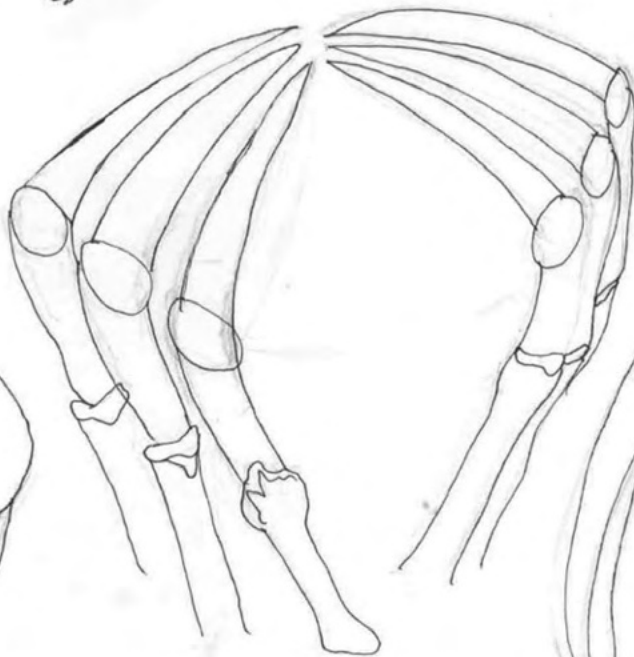
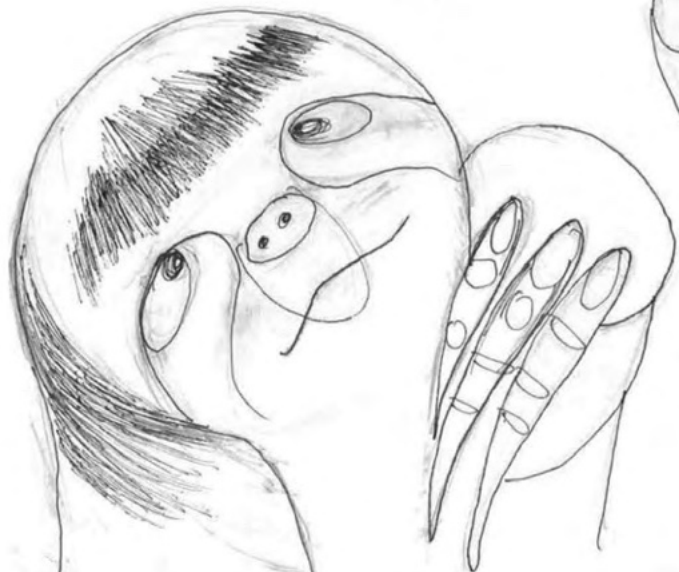
91627 Initiate design ideas through exploration

SAMPLE EXEMPLAR – EXCELLENCE

**Calm, Balanced, and
Purposeful Light Product**



Idea Generation



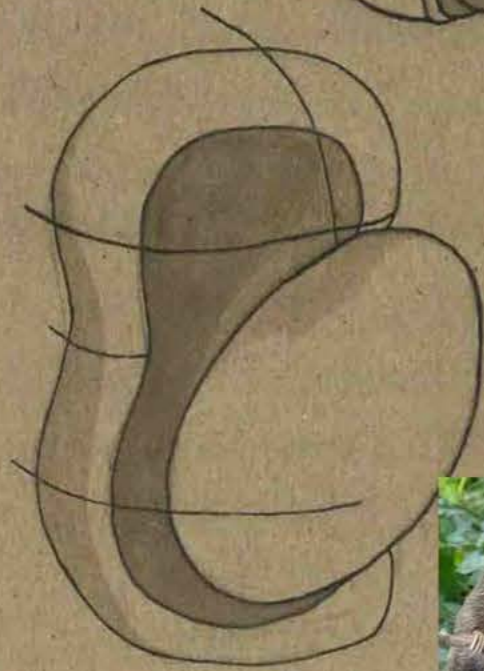
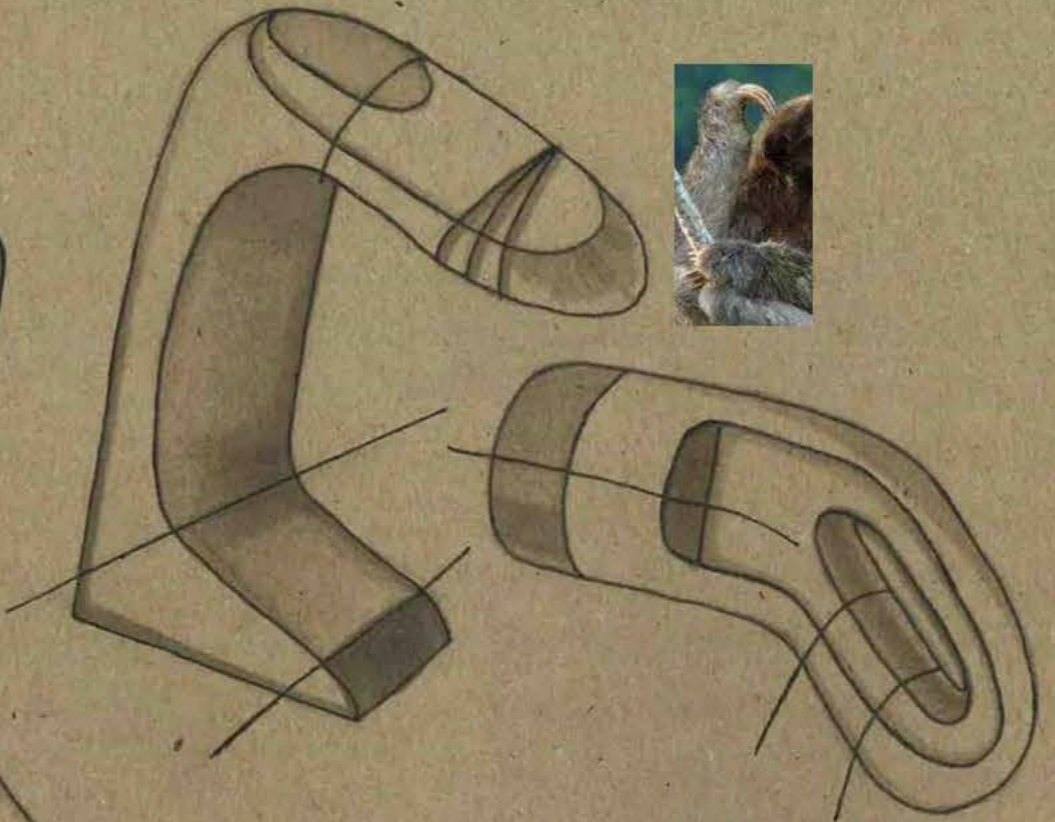
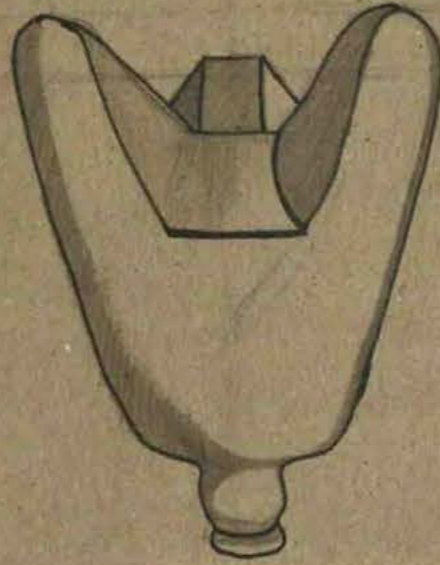
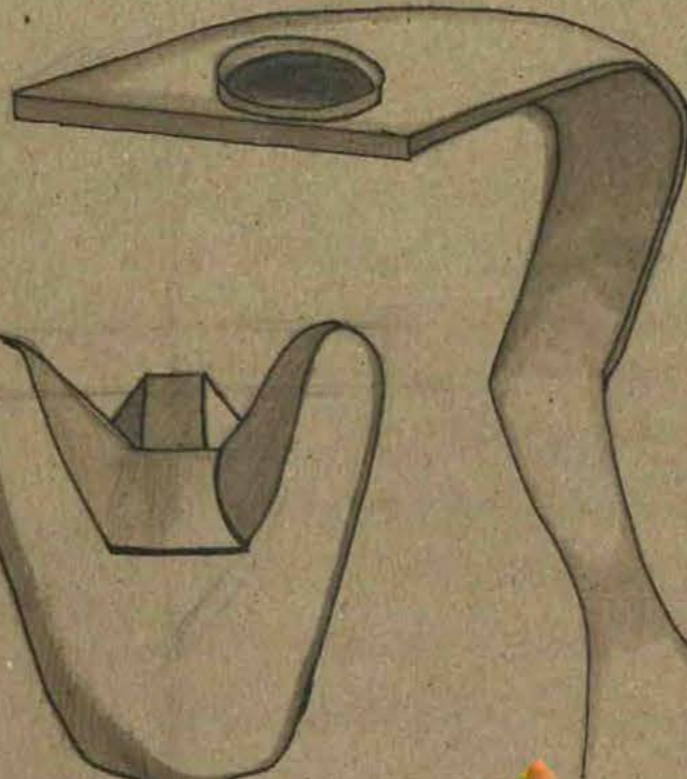


Ide a Generation



Idea Generation

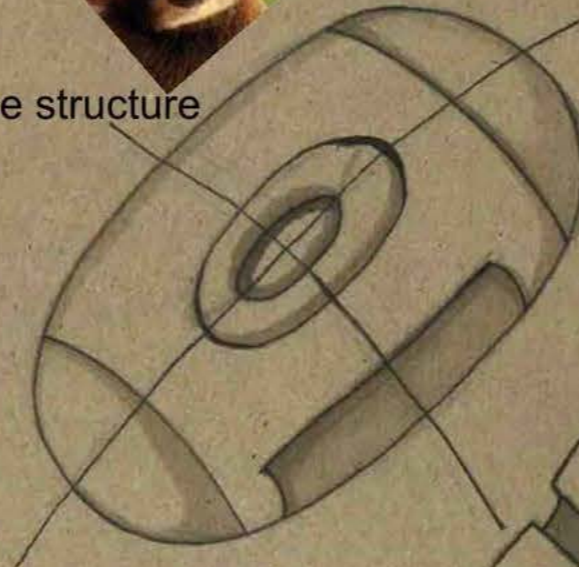




Face structure



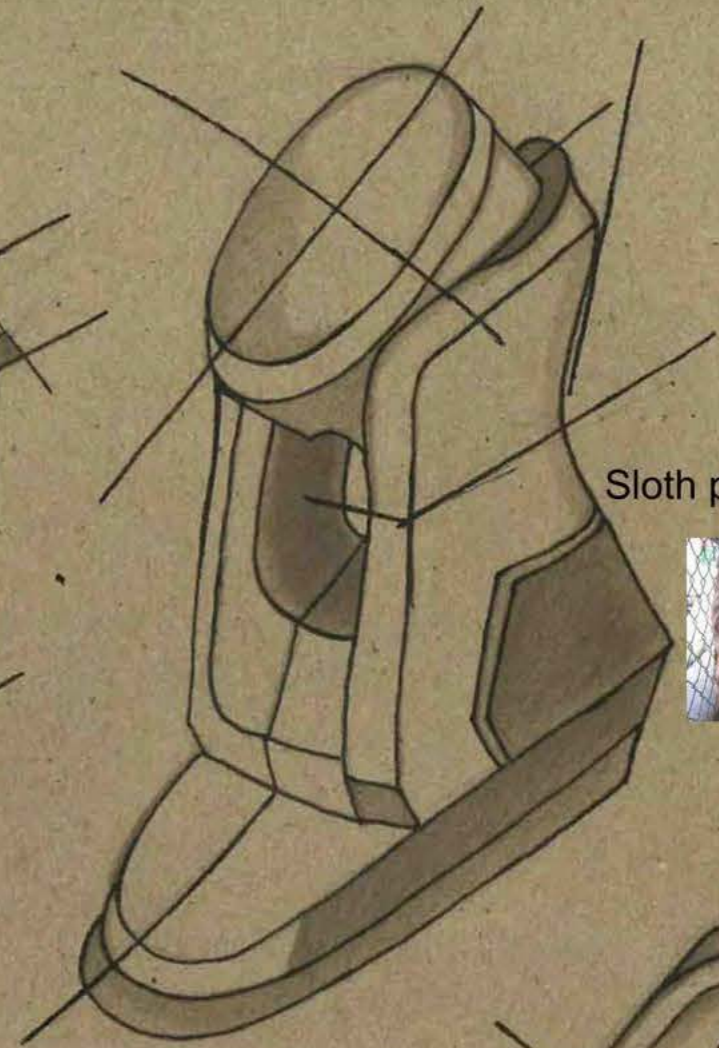
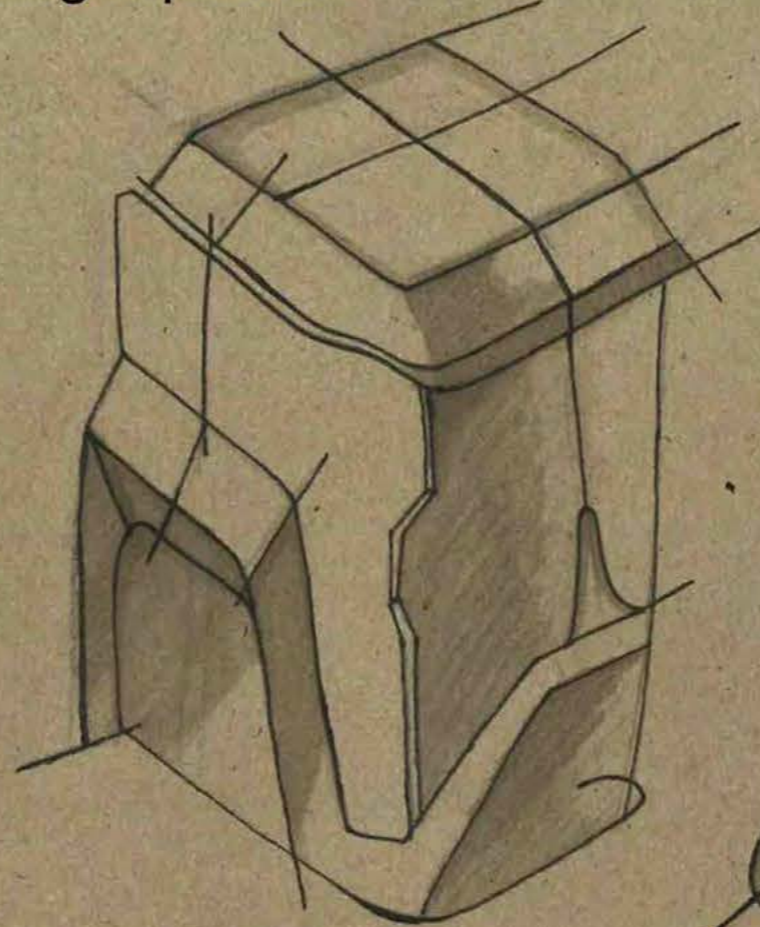
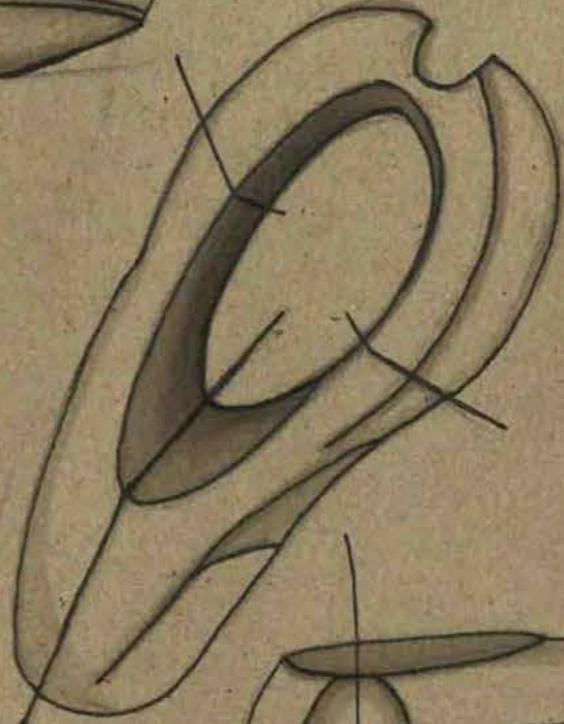
Extending



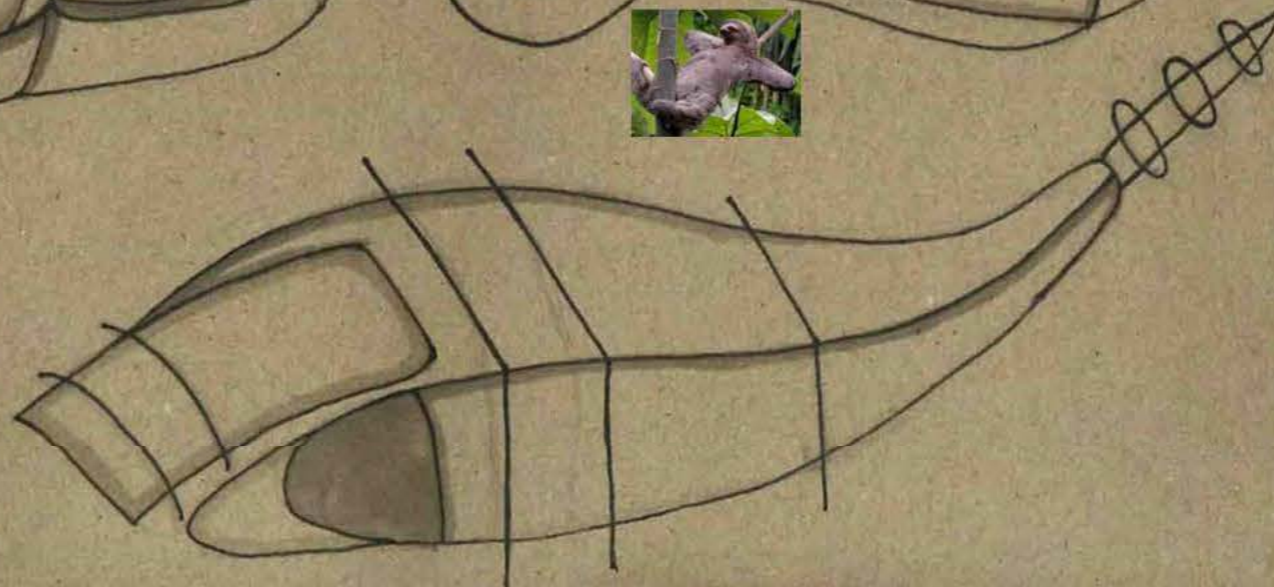
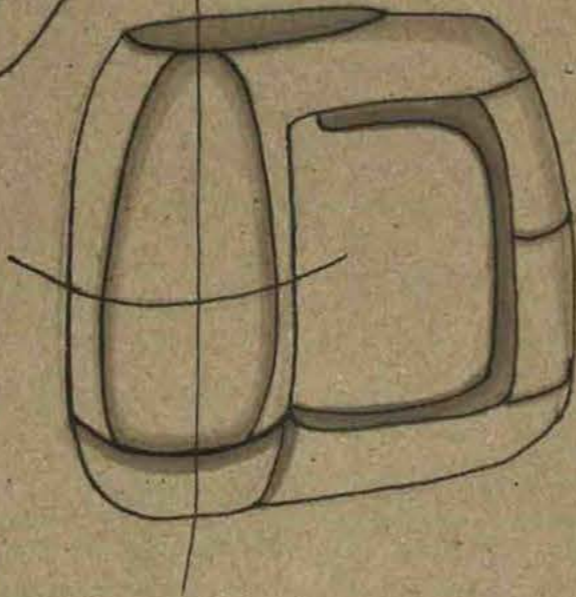
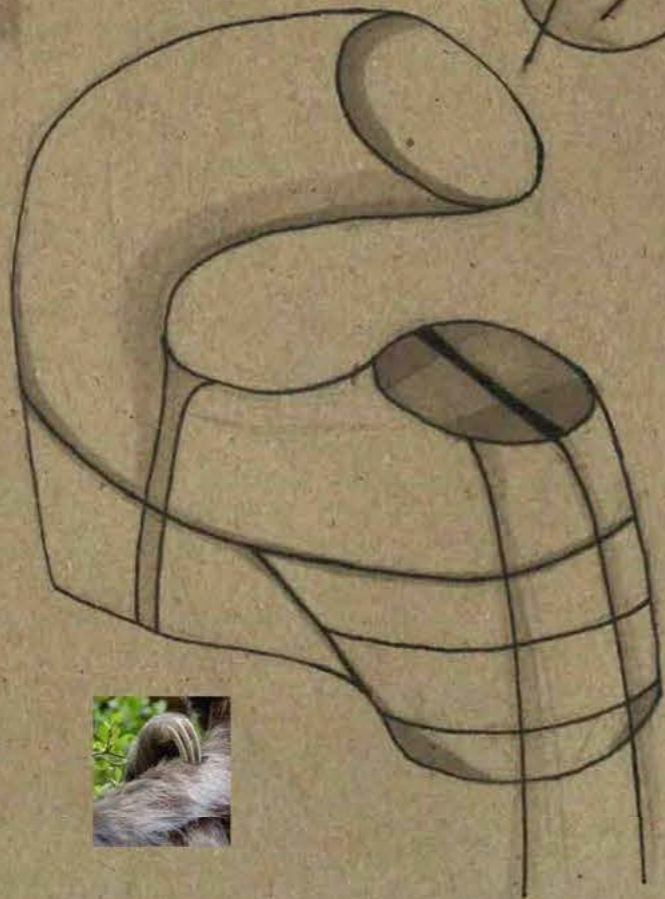
Sloth eyes

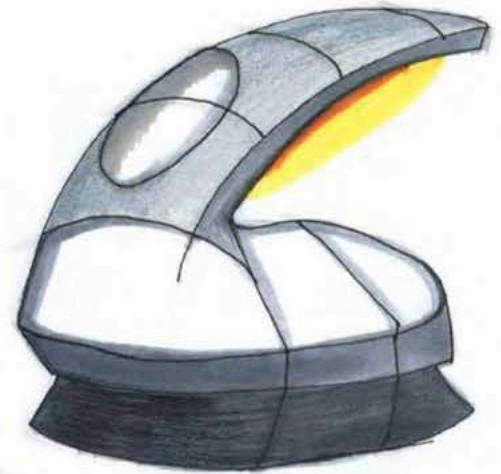
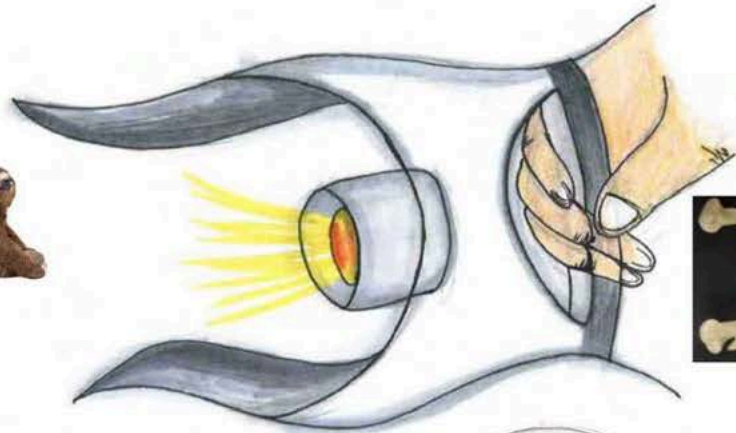
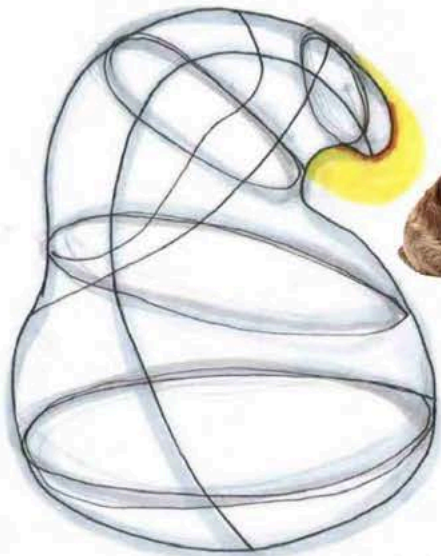


Extending form as a light product

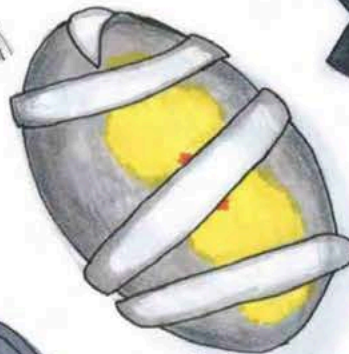
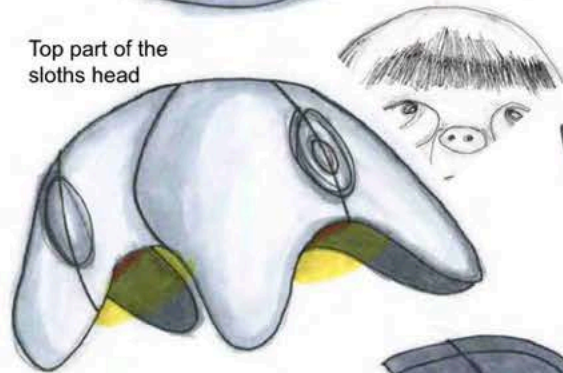


Sloth posture





Top part of the sloths head



Sloth arm around tree

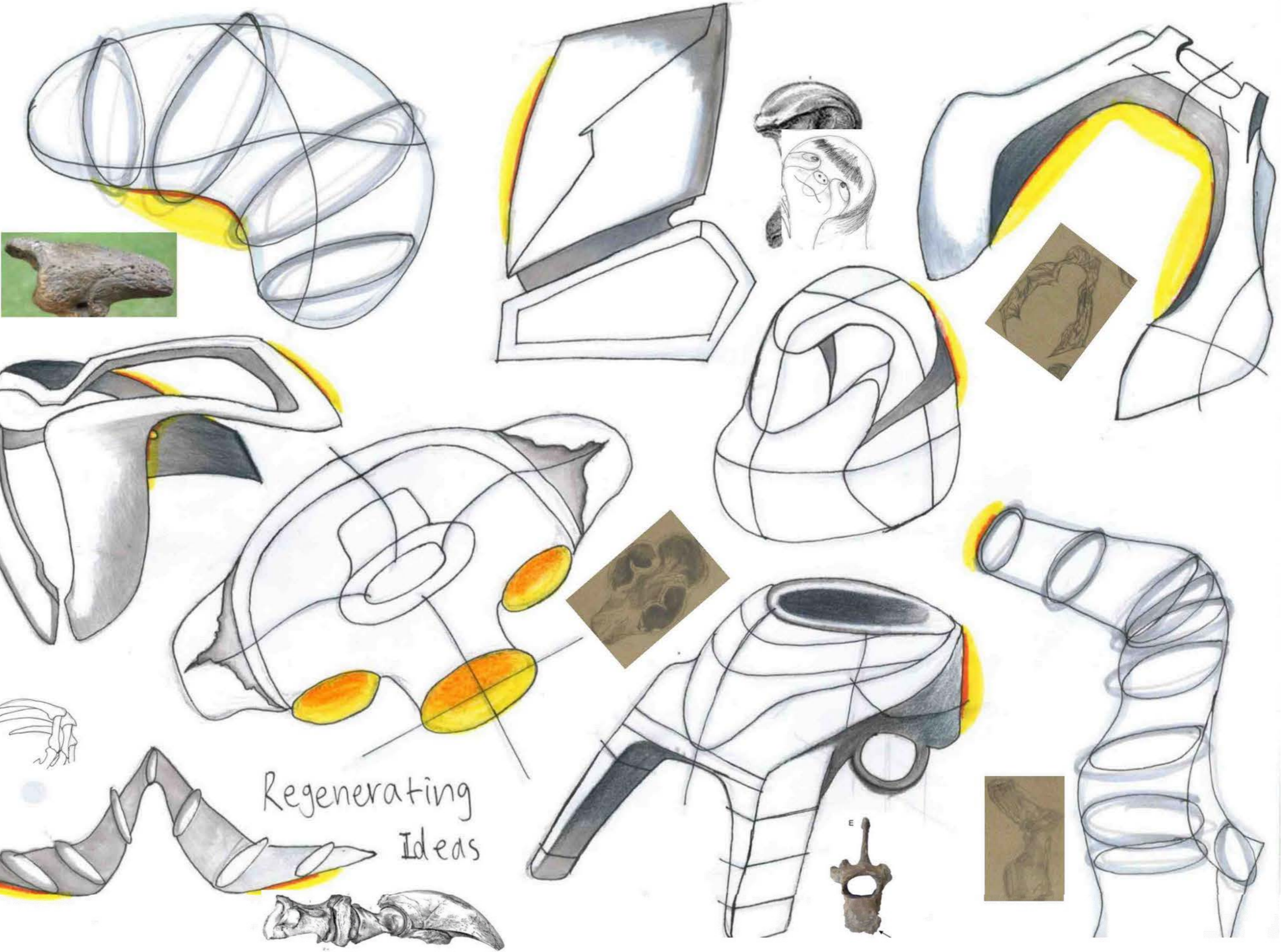


Sloth claw



Regenerating Ideas

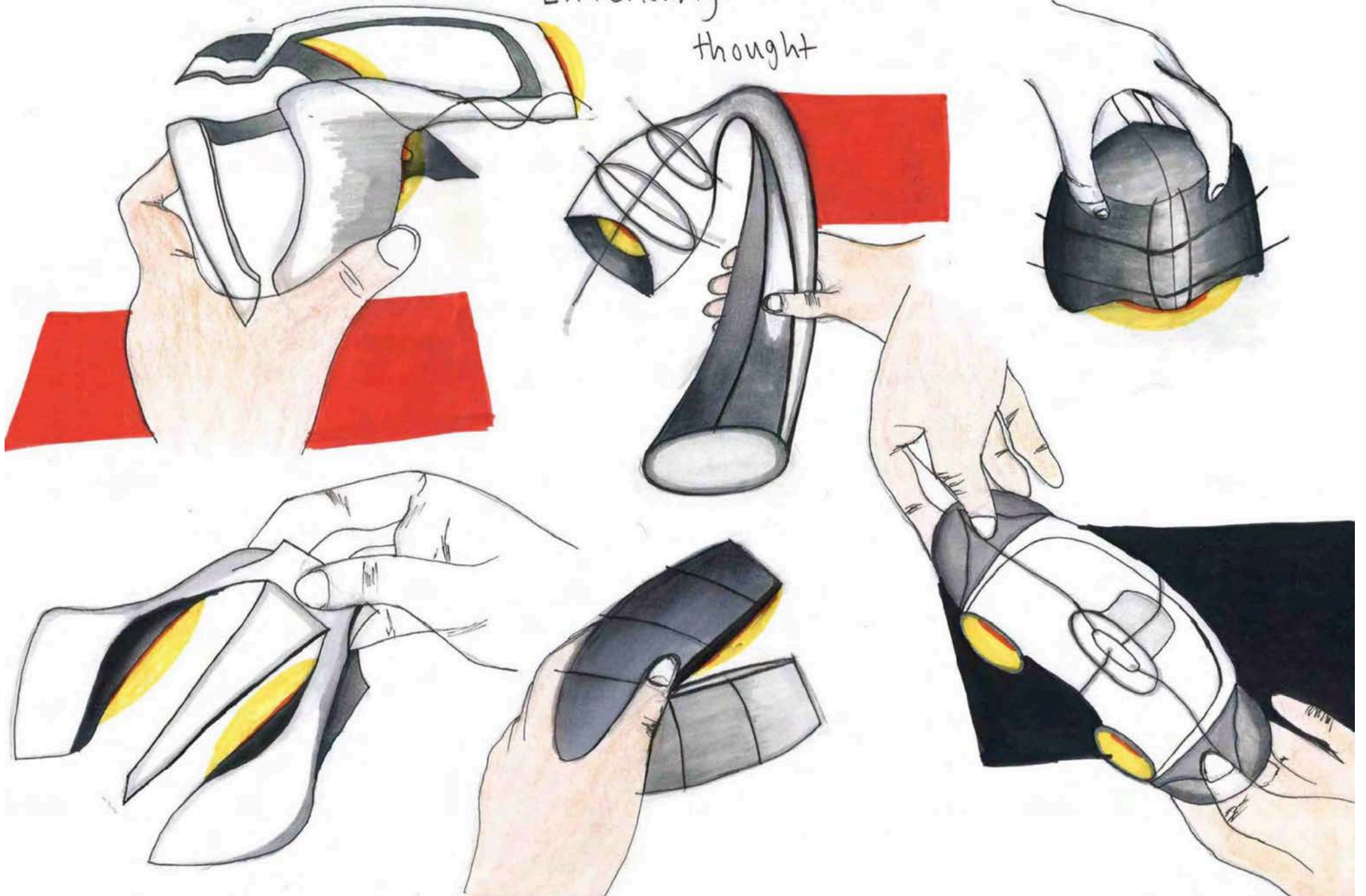




Regenerating
Ideas



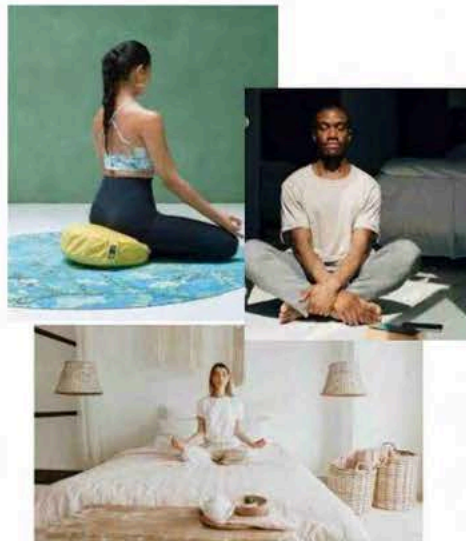
Extending a train of
thought



CONTEXT



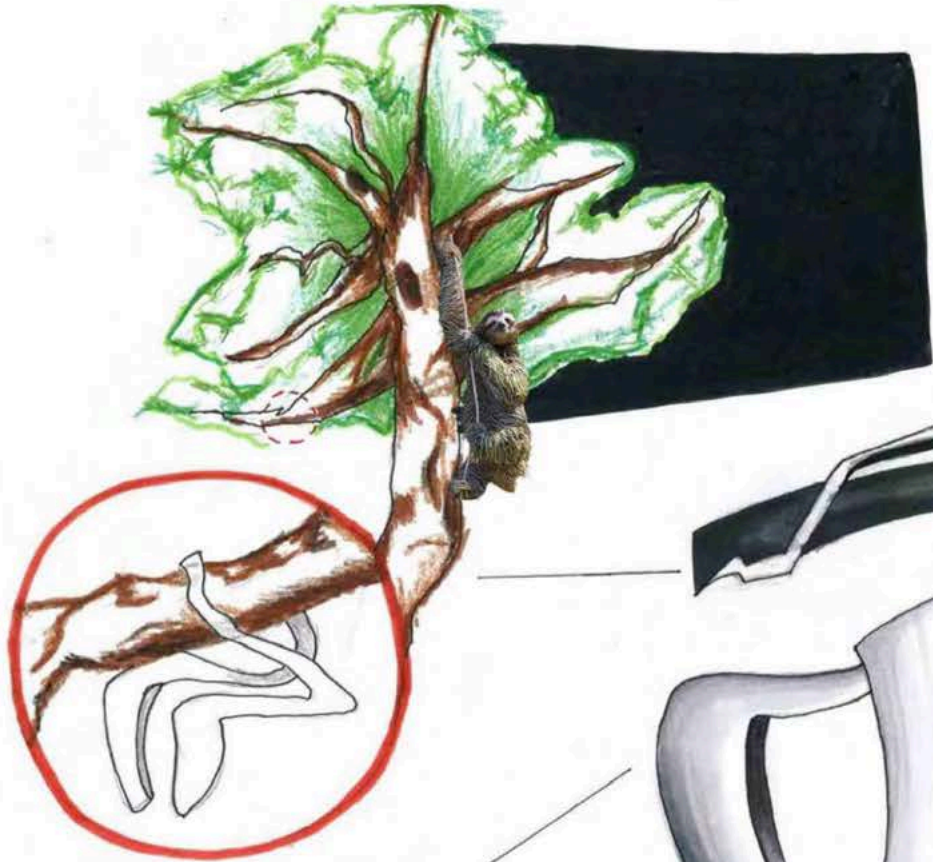
When hiking at night you want to feel safe, secure, and confident while walking in low light conditions. Proper lighting reduces the risk of tripping, getting lost, or encountering unexpected dangers. The sloth inspired design can help the users to remain calm even in unexpected situations.



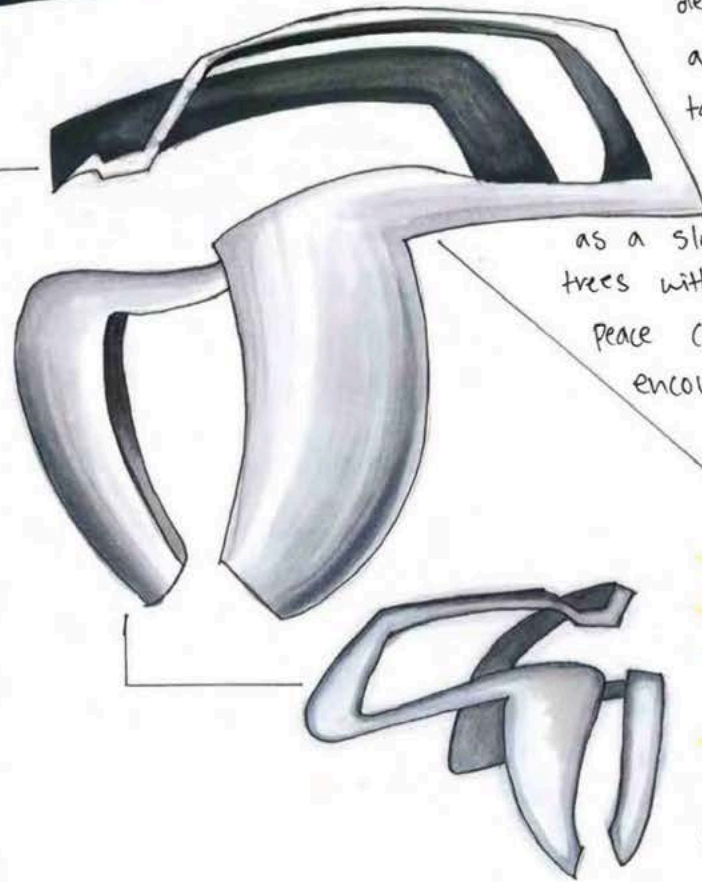
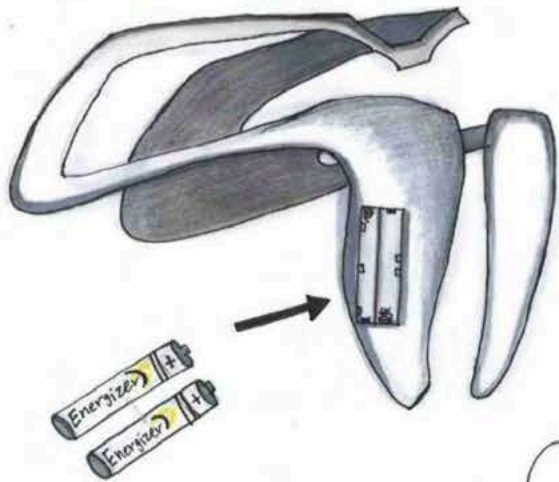
Many people meditate to slow down, clear their minds. By placing the light beside them, it will create a peaceful atmosphere that supports relaxation. Since the design is inspired by the sloth's slow and mindful movements from their finger acts as a gentle reminder.



The context of my product idea is to brighten up hiking trails at night, providing visibility and safety for outdoor users while also offering a calming, ambient light for moments of stillness such as during meditation. The light can be placed beside the user to create a peaceful atmosphere, supporting both active and restful experiences in nature.



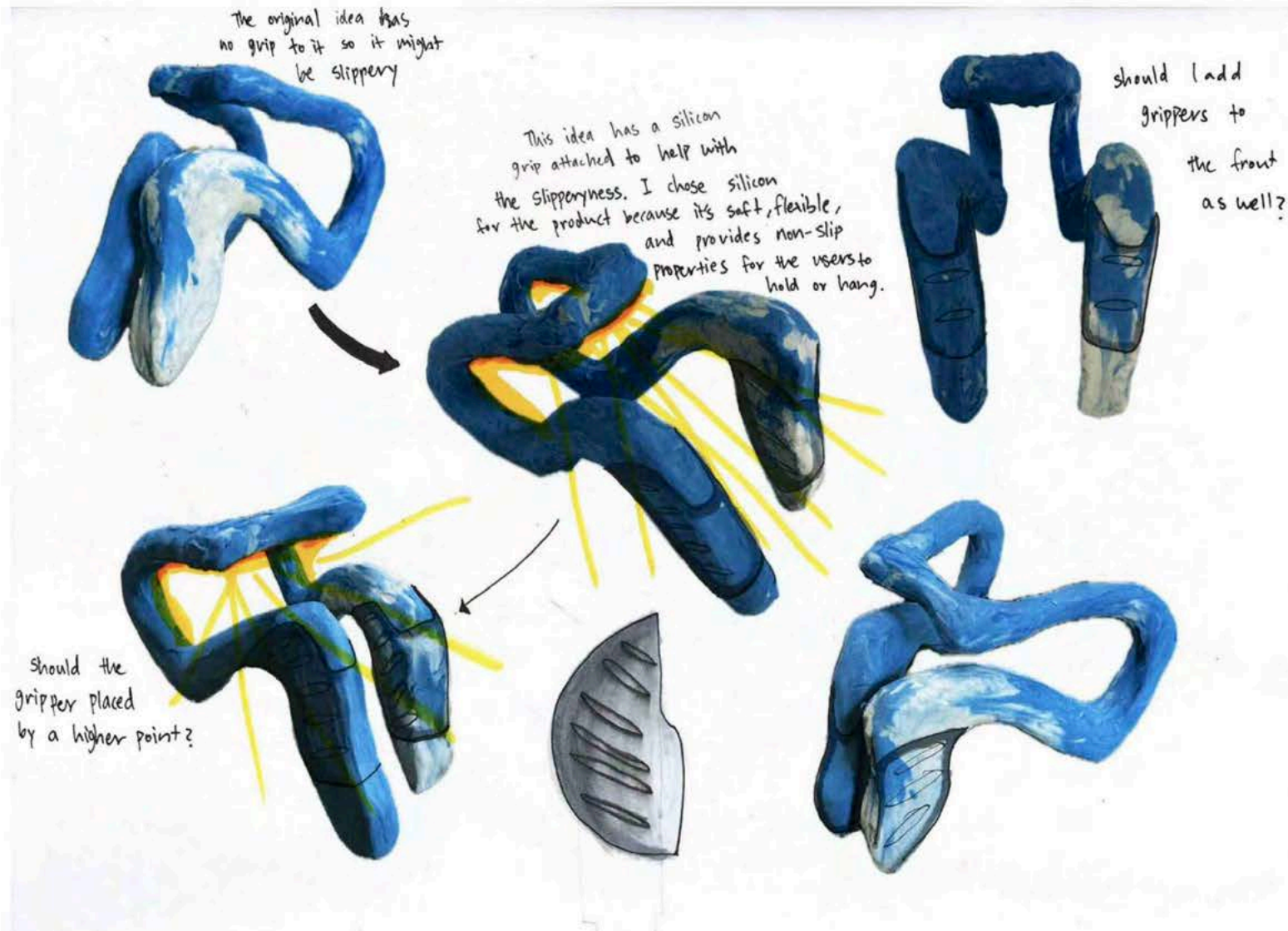
In today's fast paced world, moments of stillness are rare. My chosen design is intended for rest areas along hiking trails, eco-retreat cabins, or even mindful indoor spaces such as meditation corners. It is designed for nature-lovers, hikers, and individuals seeking calm and reconnection. People who truly value the beauty of slow living and intentional design. Inspired by the curved form of a sloth's gripping finger, the light takes on a flowing "P" shape, but with a textured, spiky silhouette that echoes the roughness of the natural world. Just as a sloth moves slowly yet navigates rugged trees with purpose, this design reminds users that peace can still be wild, tactile, and alive. The product encourages stillness, reflection, and connection.



CONTEXT

Thinking within context

I made a physical model to understand the user experience better. This process helped me discover more things about my design.



I did a SWOT analysis
-within the context of hiking

Strength:

- Easy to hold/hang
- Design that fits original inspiration
- Light to carry

Weakness:

- Weaker design

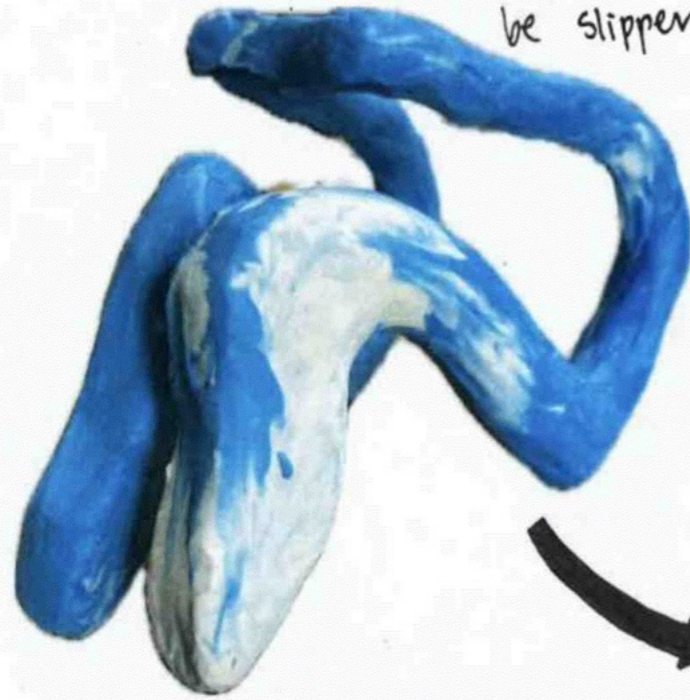
Opportunities:

- Form has potential for multiple uses
- A more aesthetic design

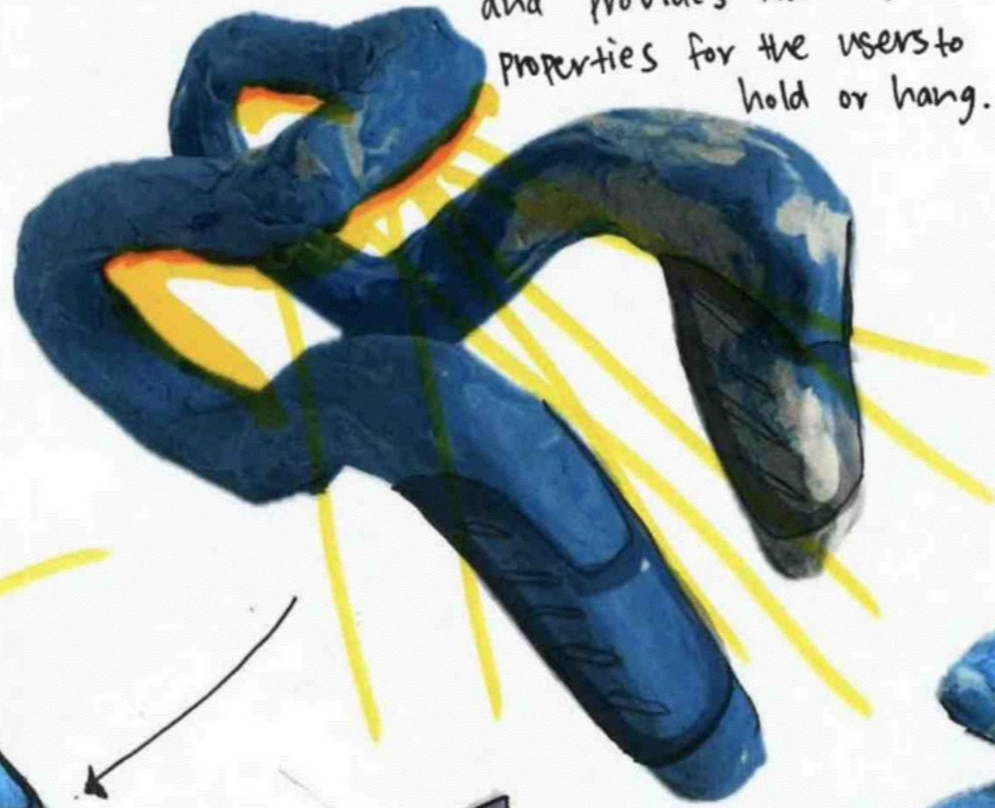
Threats:

- Surface area of light is small therefore potentially weaker light source
- Could be less durable

The original idea has no grip to it so it might be slippery



This idea has a silicon grip attached to help with the slipperiness. I chose silicon for the product because its soft, flexible, and provides non-slip properties for the users to hold or hang.

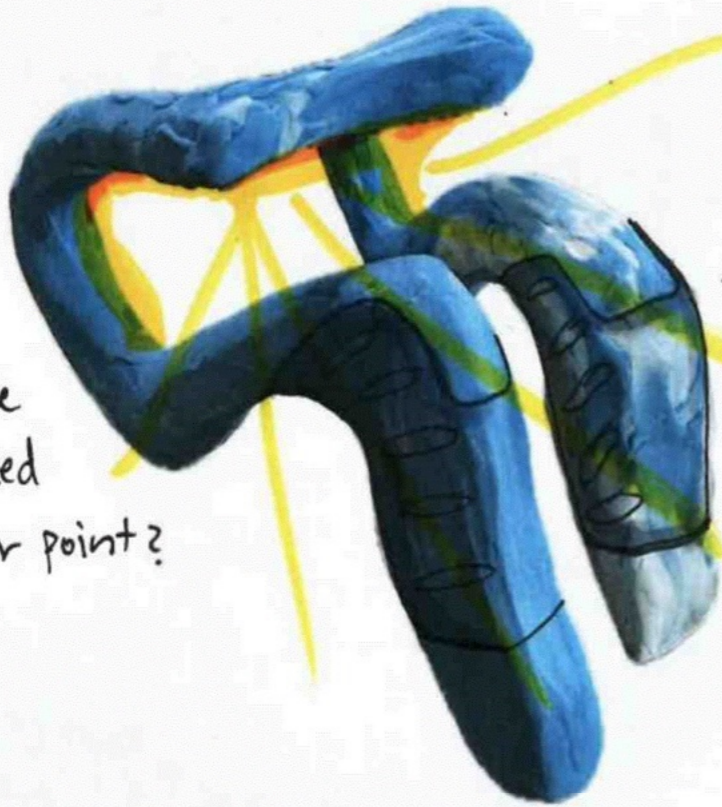


should I add grippers to the front as well?



Removable silicone grip ensures secure hold outdoors and easy use indoors.

Should the gripper be placed by a higher point?

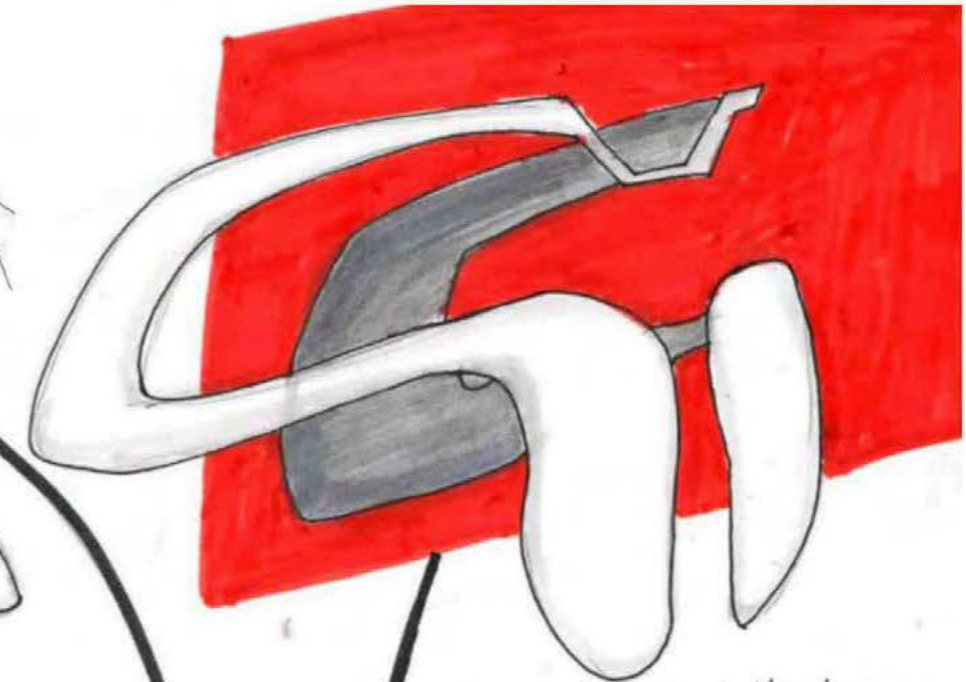
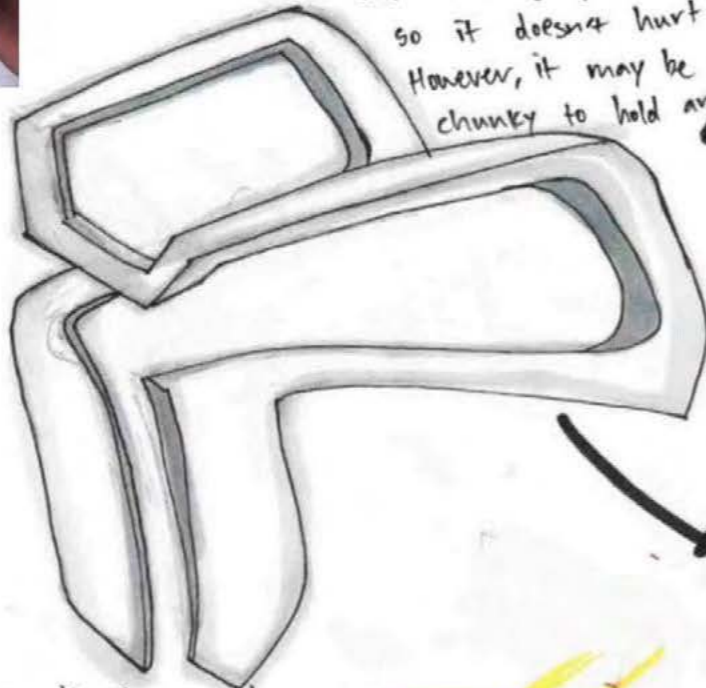




Sloth skull inspired

This idea made sure to give a sloth claw kinda-look but in a squared form so it doesn't hurt anyone. However, it may be a bit too chunky to hold around.

eneration

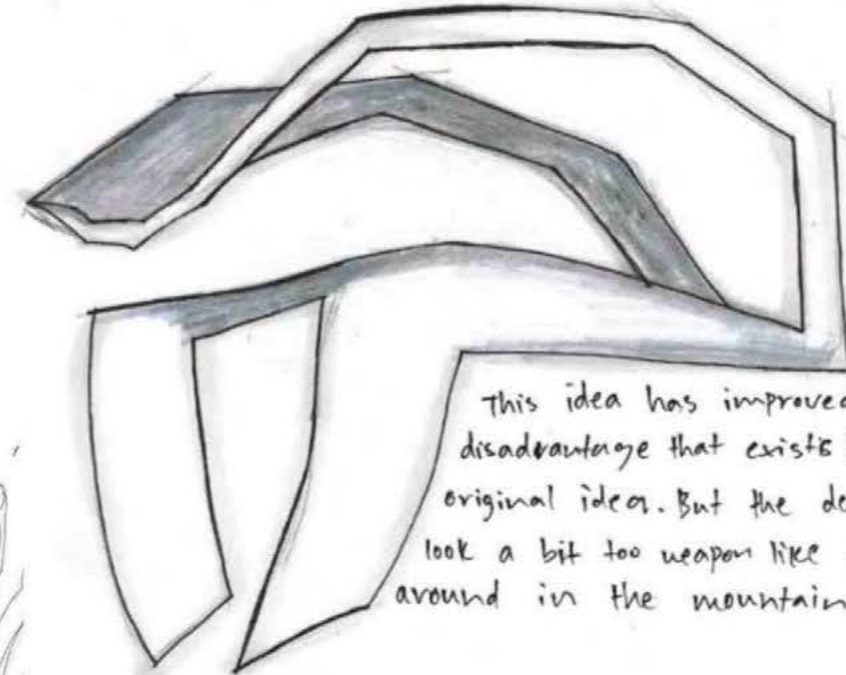


The original idea has sharp features from the sloth's finger. However, it might not capture the unique, claw-like grip of a sloth

This idea is so much more aesthetic than the other models. And also since the design isn't chunky no lights get blocked.

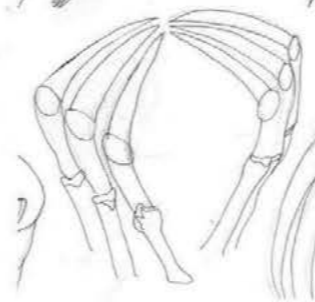


This idea has a friendlier look but the light doesn't shine in several directions due to the chunkiness of the idea.



This idea has improved the disadvantage that exists in the original ideas. But the design may look a bit too weapon like to hold around in the mountains.

Refining form



Rigid structure

Human experience - dimensions



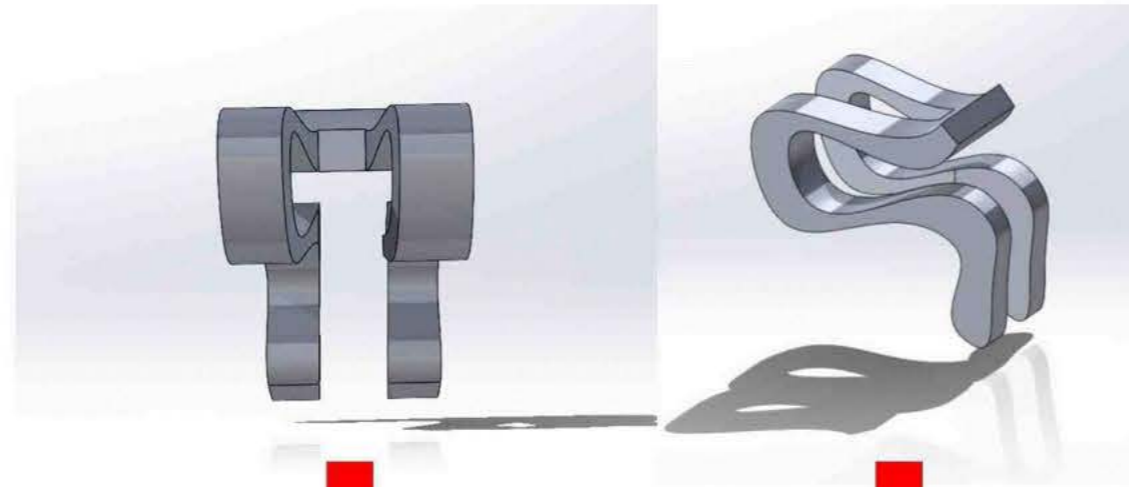
One hand held

initially considered to be held w one hand but on further consideration, decided to increase size and have the product be held with two hands.



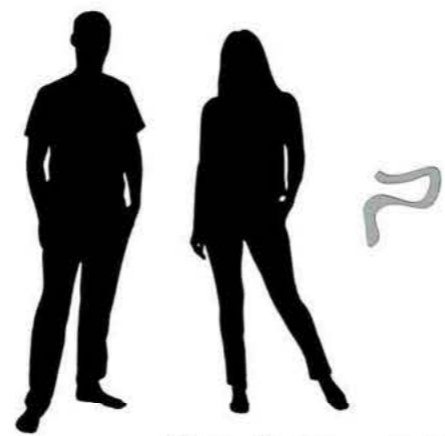
Two Hand Hold

The two-handed hold improves control and balance, reducing wrist strain and ensuring a secure grip in outdoor conditions.



Width: 90-110 mm

The dimensions were carefully chosen to balance comfort, practicality, and style. The 9 cm handle offers a grip that feels natural in the hand, reducing strain during extended use. At 17 cm in height, the product is compact enough for easy portability yet tall enough to accommodate ample capacity. The 12 cm width provides stability and proportion, ensuring the design feels well-balanced while still fitting neatly into bags, shelves, or storage spaces. Together, these measurements create a product that is both functional and aesthetically pleasing



(Product in human scale)

Length: 200-240 mm



(rough dimension, not to scale)

Final dimensions

The design was transformed from a bold, statement - making product into one with a smoother, more refined aesthetic, balancing elegance with functionality.

Human Experience (Hiking) & (Meditation)

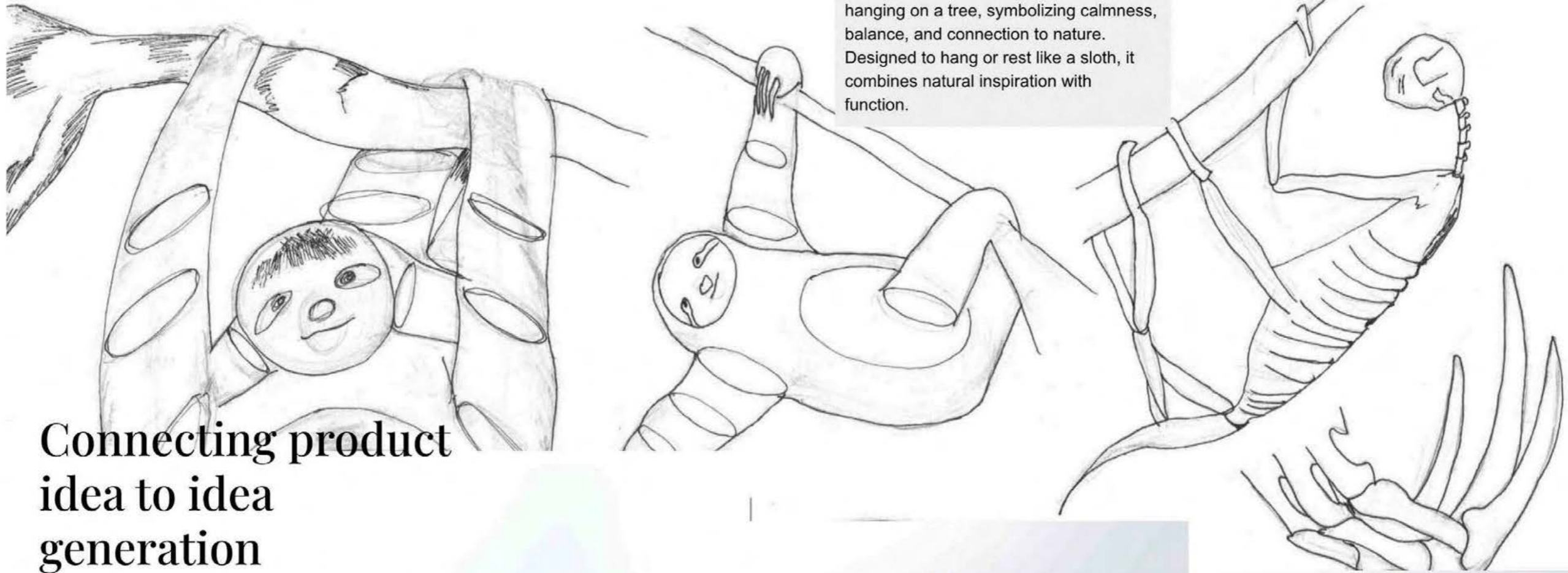
Prototyped and tested the light's form, grip, and dimensions to achieve comfortable handling and balanced weight.



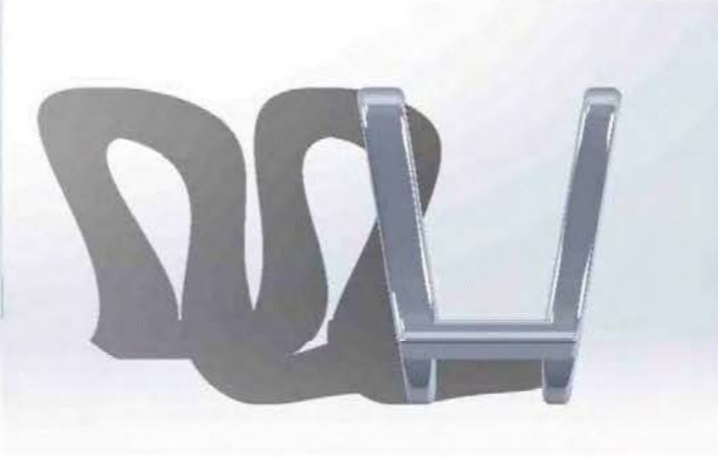
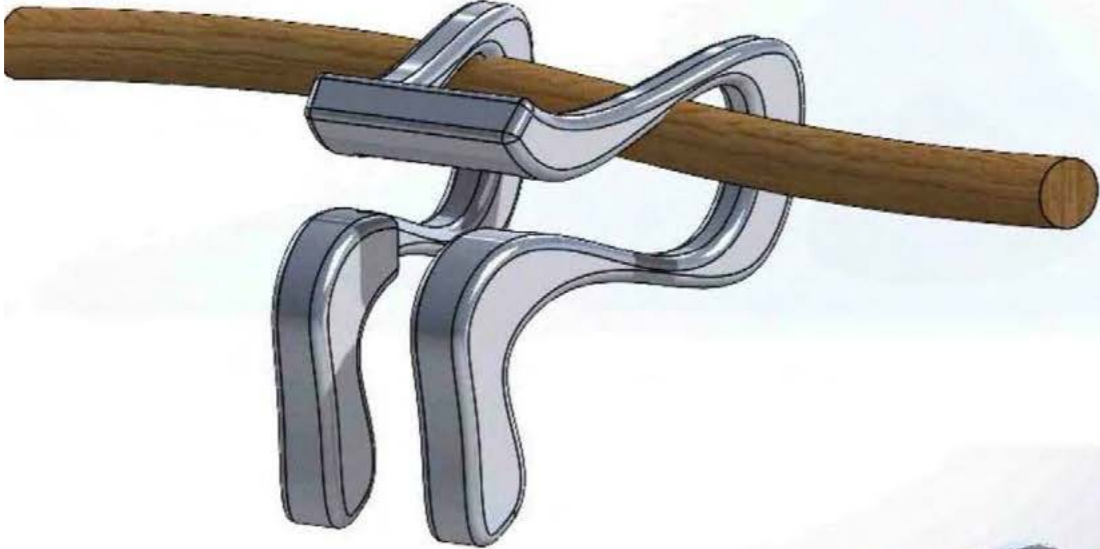
Ergonomic testing focused on comfort, stability, and scale to ensure the light feels natural in both indoor and outdoor use.



The light's form is inspired by a sloth hanging on a tree, symbolizing calmness, balance, and connection to nature. Designed to hang or rest like a sloth, it combines natural inspiration with function.



Connecting product idea to idea generation



Resolving

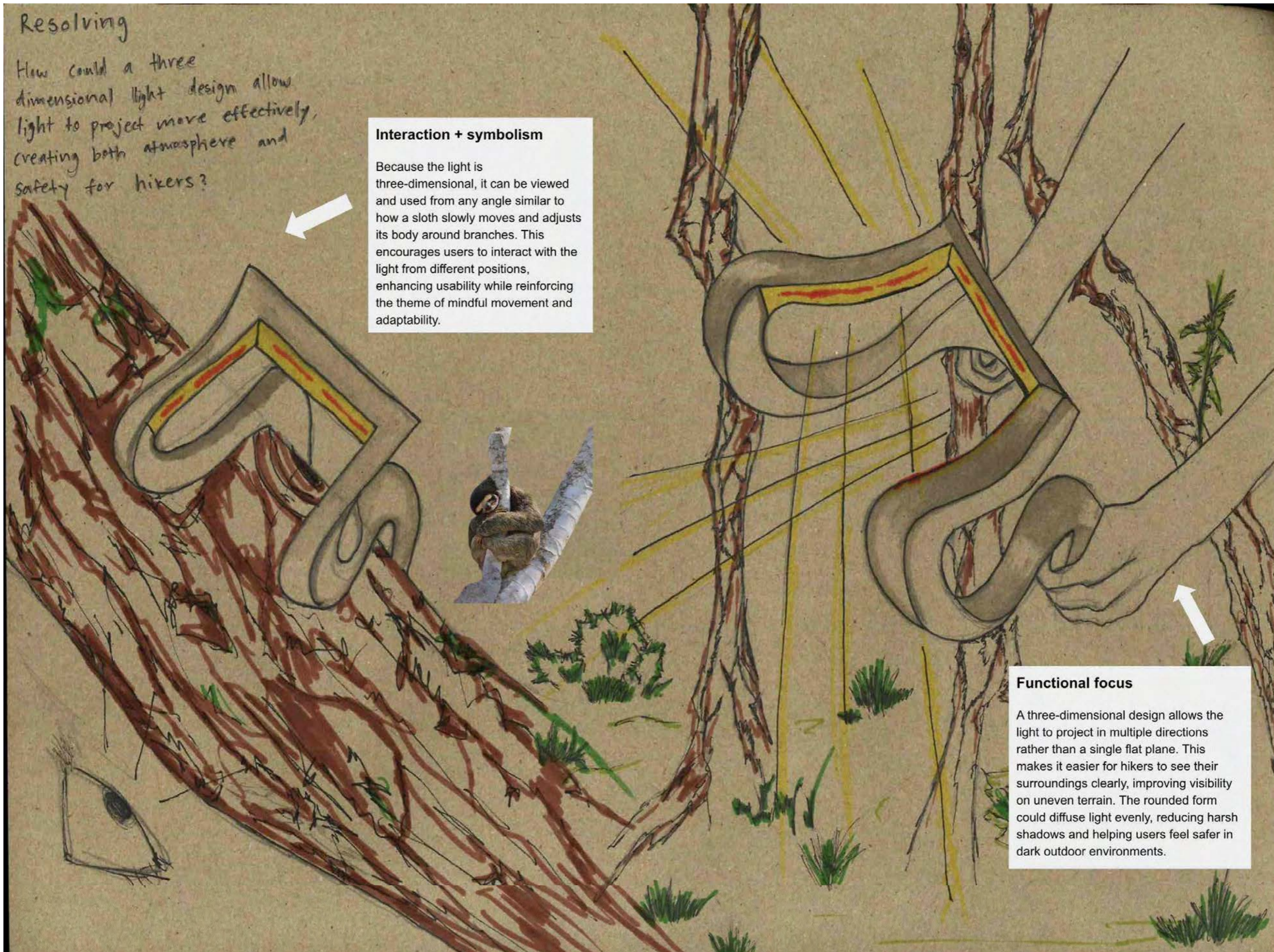
How could a three dimensional light design allow light to project more effectively, creating both atmosphere and safety for hikers?

Interaction + symbolism

Because the light is three-dimensional, it can be viewed and used from any angle similar to how a sloth slowly moves and adjusts its body around branches. This encourages users to interact with the light from different positions, enhancing usability while reinforcing the theme of mindful movement and adaptability.

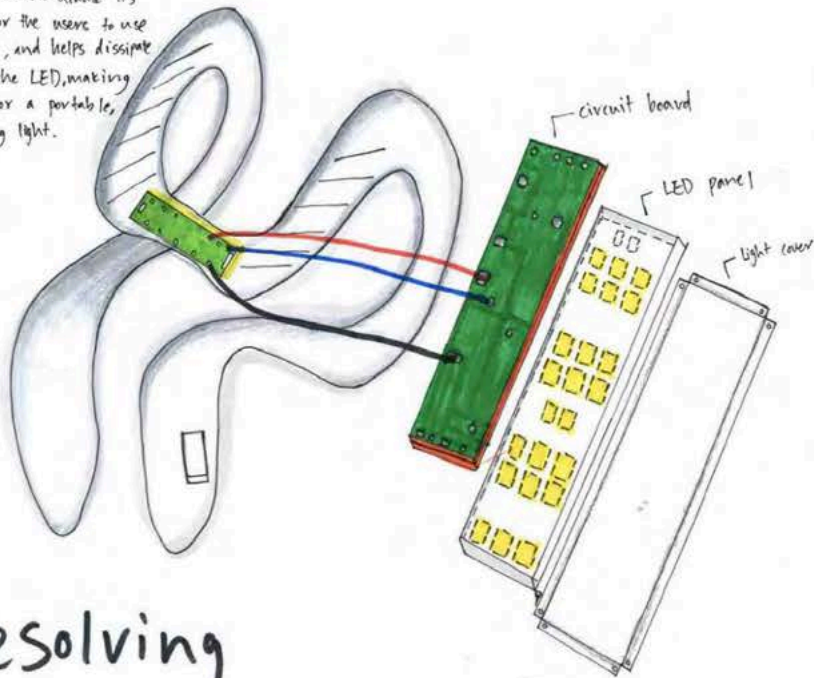
Functional focus

A three-dimensional design allows the light to project in multiple directions rather than a single flat plane. This makes it easier for hikers to see their surroundings clearly, improving visibility on uneven terrain. The rounded form could diffuse light evenly, reducing harsh shadows and helping users feel safer in dark outdoor environments.

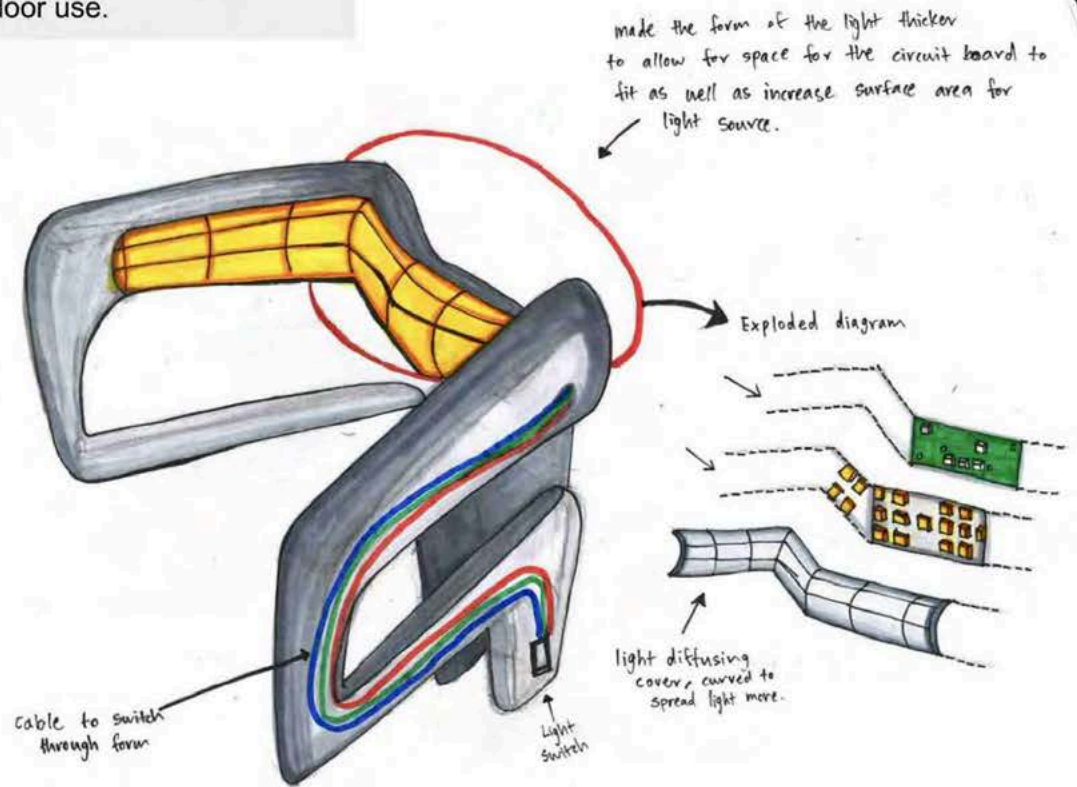


Its three-dimensional shape and secure grip echo a sloth's steady hold, while the well-built circuit ensures reliable performance. The switch is easy to operate during hiking, and the long-lasting AA battery makes it durable and portable for both indoor and outdoor use.

material (Aluminum)
I chose aluminum because its lightweight for the users to use also durable, and helps dissipate heat from the LED, making it ideal for a portable, long-lasting light.



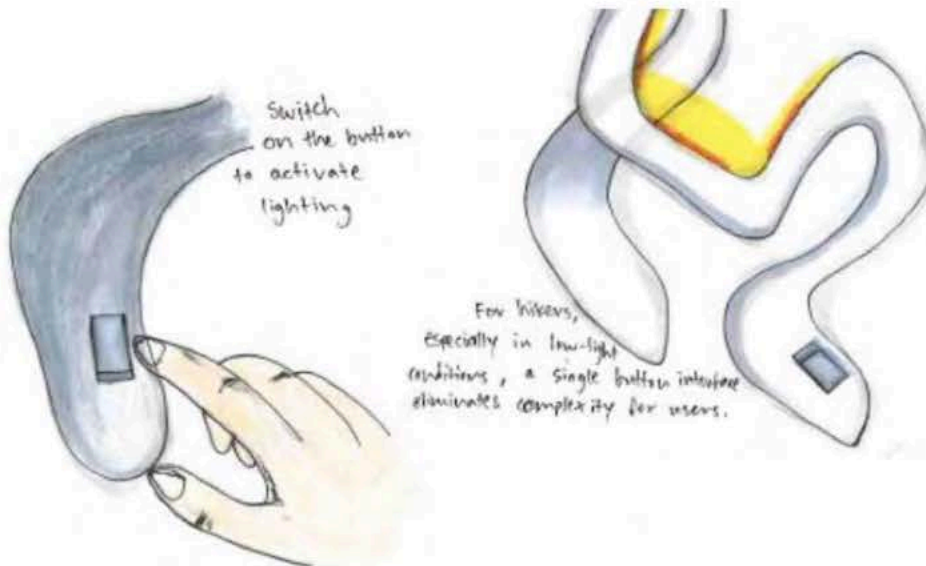
Resolving



Additional features, like the removable silicone grip and balanced weight, enhance comfort, adaptability, and user experience.

Resolving material

The light's design is inspired by a sloth hanging on a tree, symbolizing calmness, balance, and connection to nature. Its three-dimensional aluminium body provides durability, lightweight portability, and a premium feel, making it easy to carry during hikes.



Material of the product

Aluminium	Carbon fibre	Plastic
<p>Aluminium Pros : Lightweight, strong, durable, resists rust, premium look, good heat dissipation Cons: Can dent under heavy impact</p>	<p>Carbon fibre Pros : Extremely strong, ultra-light, high-end aesthetic Cons: Expensive, brittle if impacted, harder to shape</p>	<p>Plastic Pros : Cheap, lightweight, easy to mold, many colors Cons: Less durable, can feel cheap, environmental impact</p>

close up of the grip

material of the grip

Silicone	Foam (EVA)
<p>Silicone Pros : Soft, flexible, non-slip, weather-resistant, durable, comfortable to hold Cons: Slightly heavier than foam</p>	<p>Foam (EVA) Pros : Very lightweight, cushioned, inexpensive Cons: Less durable, absorbs dirt/moisture, can wear out faster</p>

Easily removable

Since the switch is placed at the bottom of the handle the grip should be placed by a higher point.

The removable silicone grip offers a soft, comfortable hold that prevents slipping, even during outdoor use, while also allowing easy indoor handling. Combined, these materials enhance both comfort and practicality, ensuring the product is sturdy, ergonomic, and user-friendly in any environment.

Resolving - refining 3d model



Final design





Final design in context



lumosloth

Designed for hikers, Lumosloth provides safety and peace of mind in unexpected situations on the trail, while also offering calming ambient light for moments of stillness.

Final exhibition

Sample Excellence exemplar

Subject: Design and Visual Communication

Standard: 91627

Total score: E7

Grade score	Commentary
E7	<p>The anatomy of a sloth, with its claw and grip, clearly informs a creative range of functional design ideas, using an effective range of visual modes. The integration of the context throughout the extending and exploring of their design ideas certainly allows the design to extend to beyond initial design thinking to reach E7.</p> <p>The design doesn't quite move past its distinctive sculptural form to show the level of transforming that would elevate this to an E8, even though the quality of refined visual communication is outstanding.</p>