

No part of the candidate's evidence in this exemplar material may be presented in an external assessment for the purpose of gaining an NZQA qualification or award.



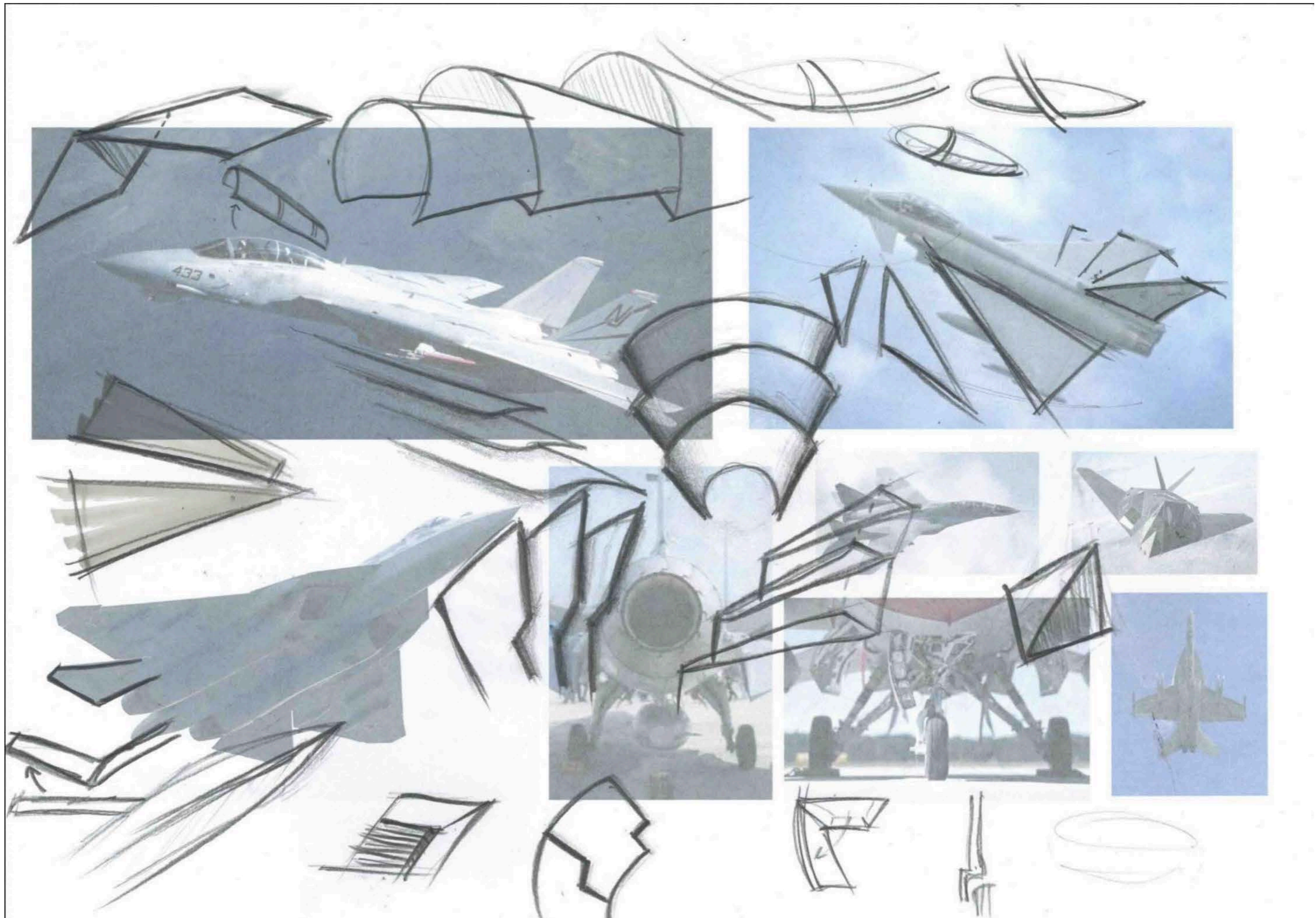
Mana Tohu Mātauranga o Aotearoa
New Zealand Qualifications Authority

Level 3 Design and Visual Communication 2026

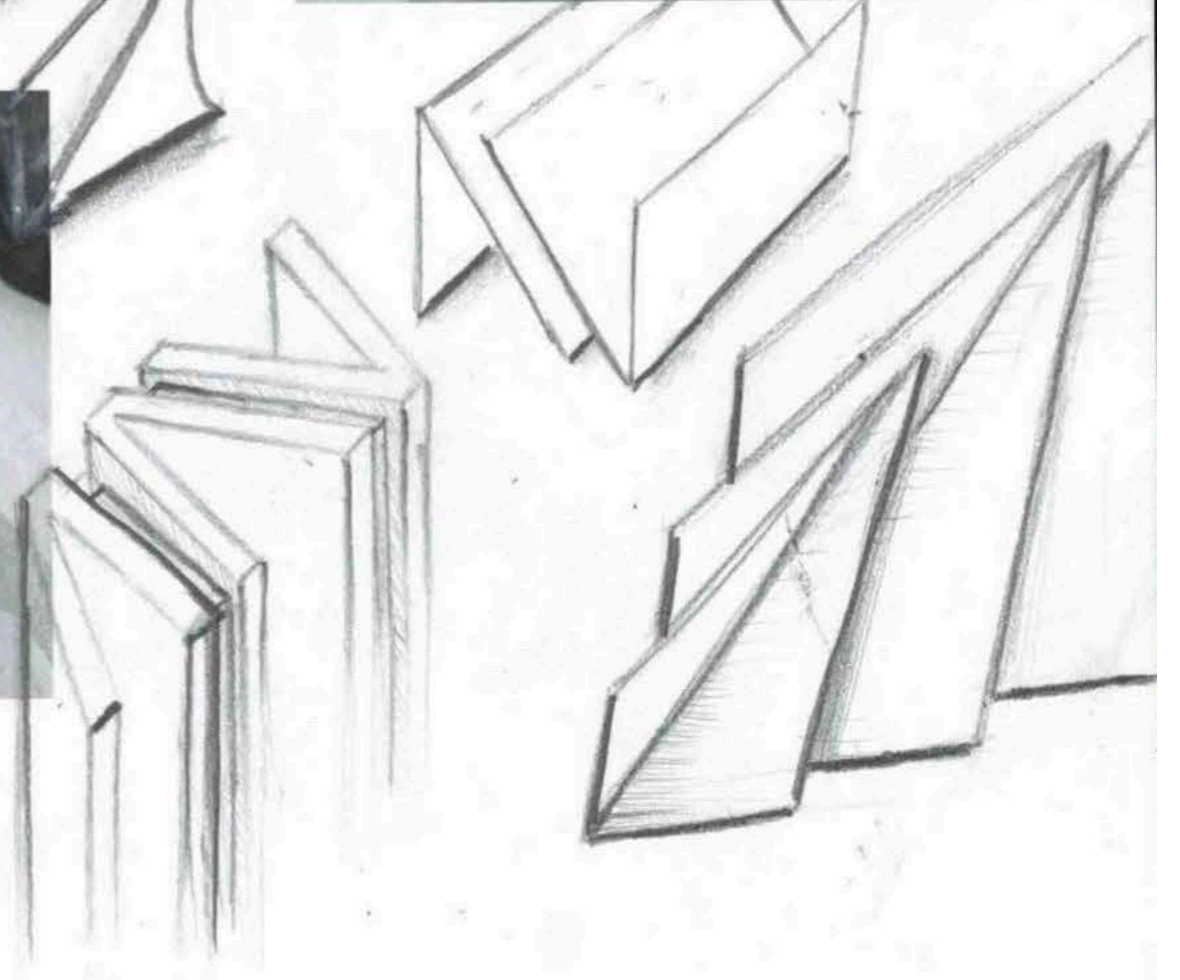
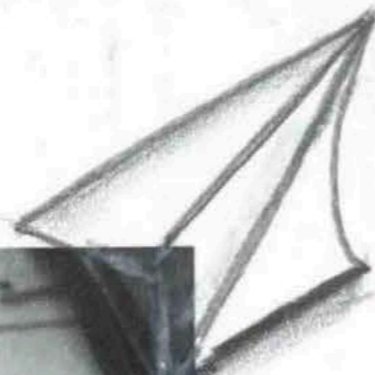
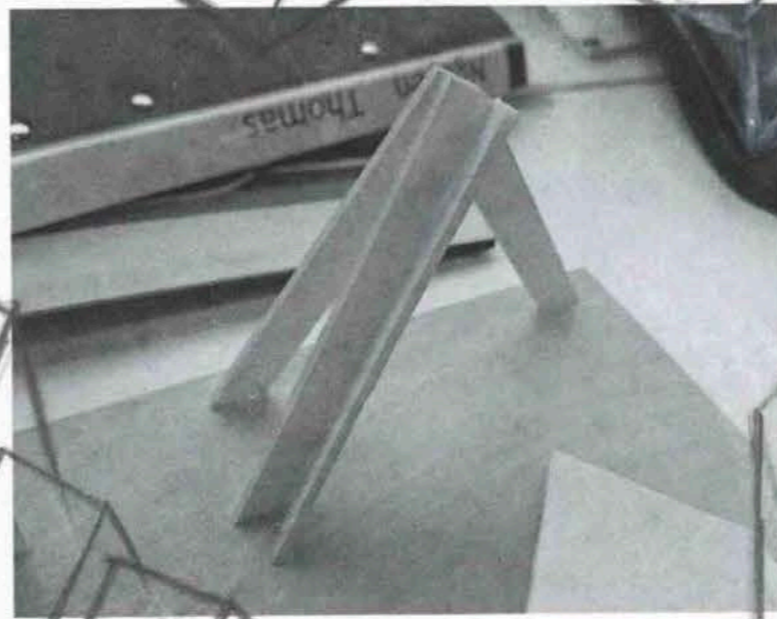
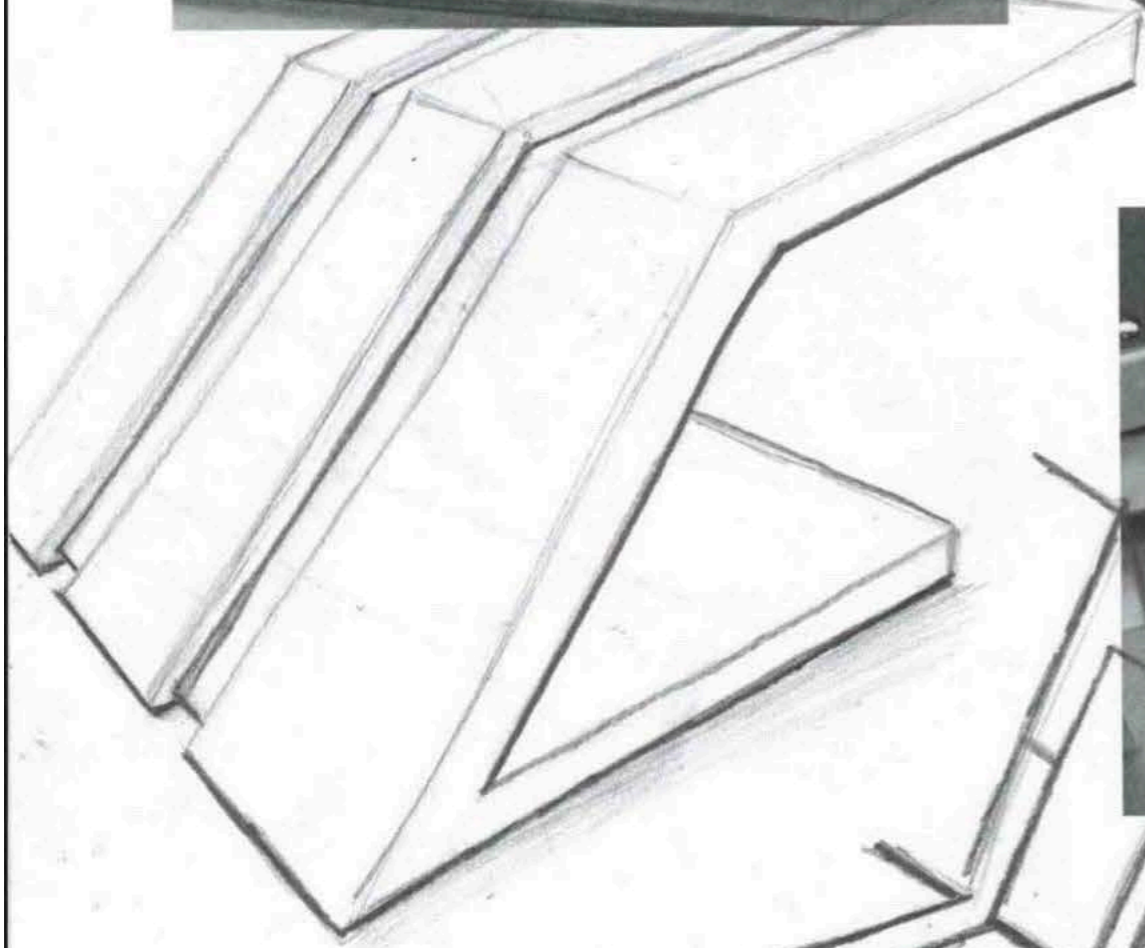
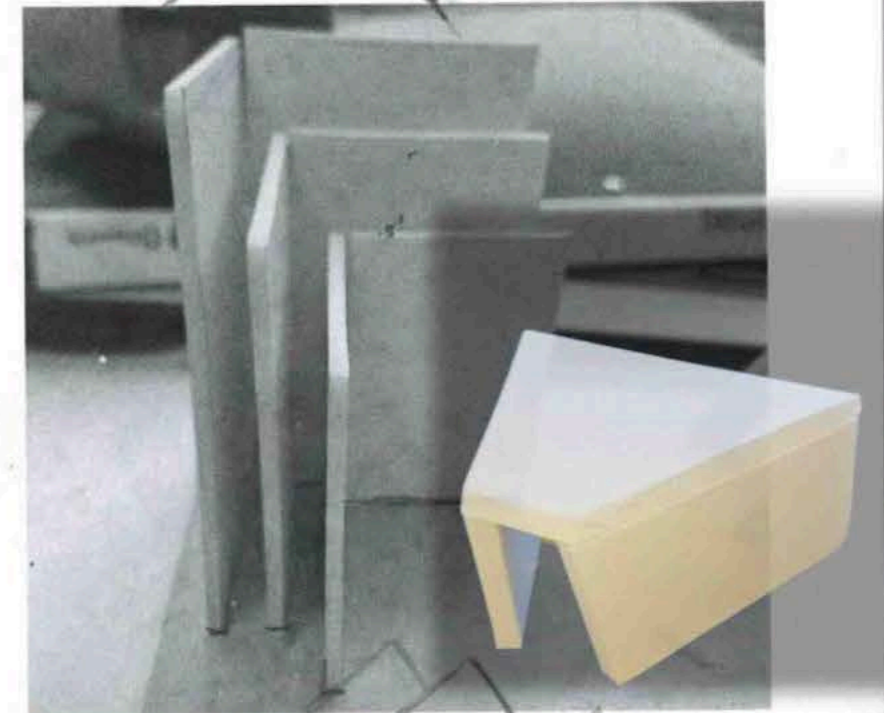
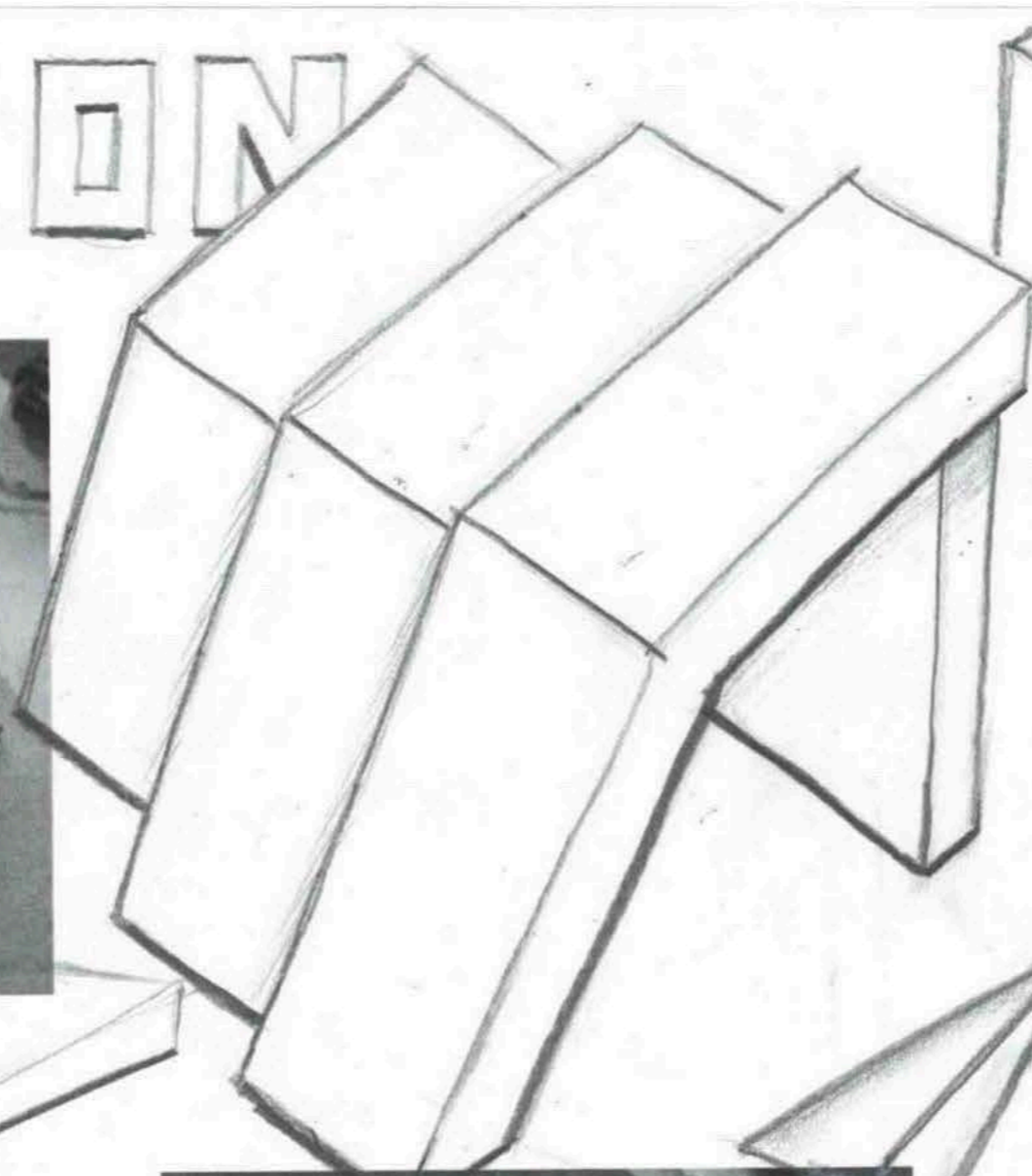
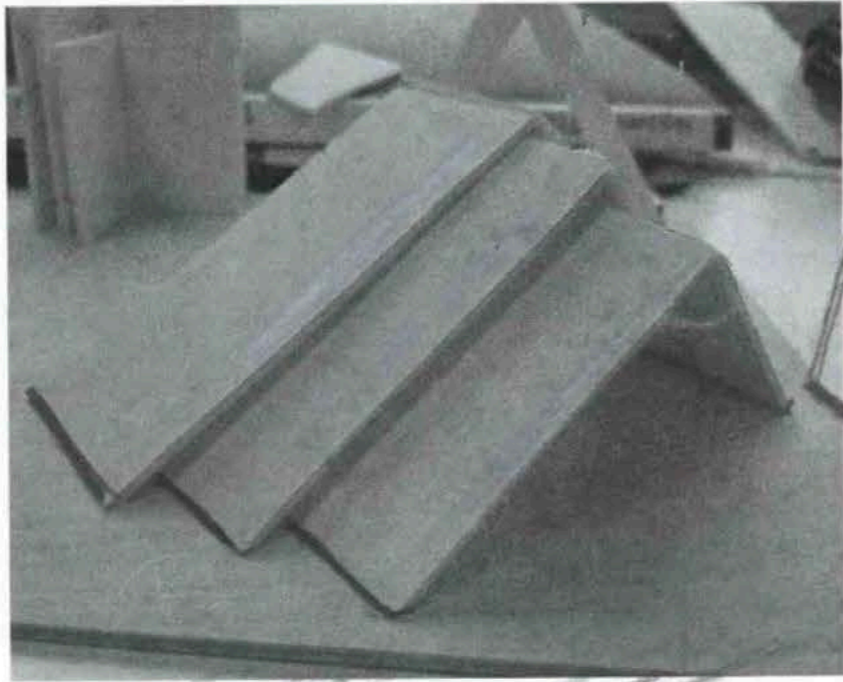
91627 Initiate design ideas through exploration

SAMPLE EXEMPLAR – MERIT

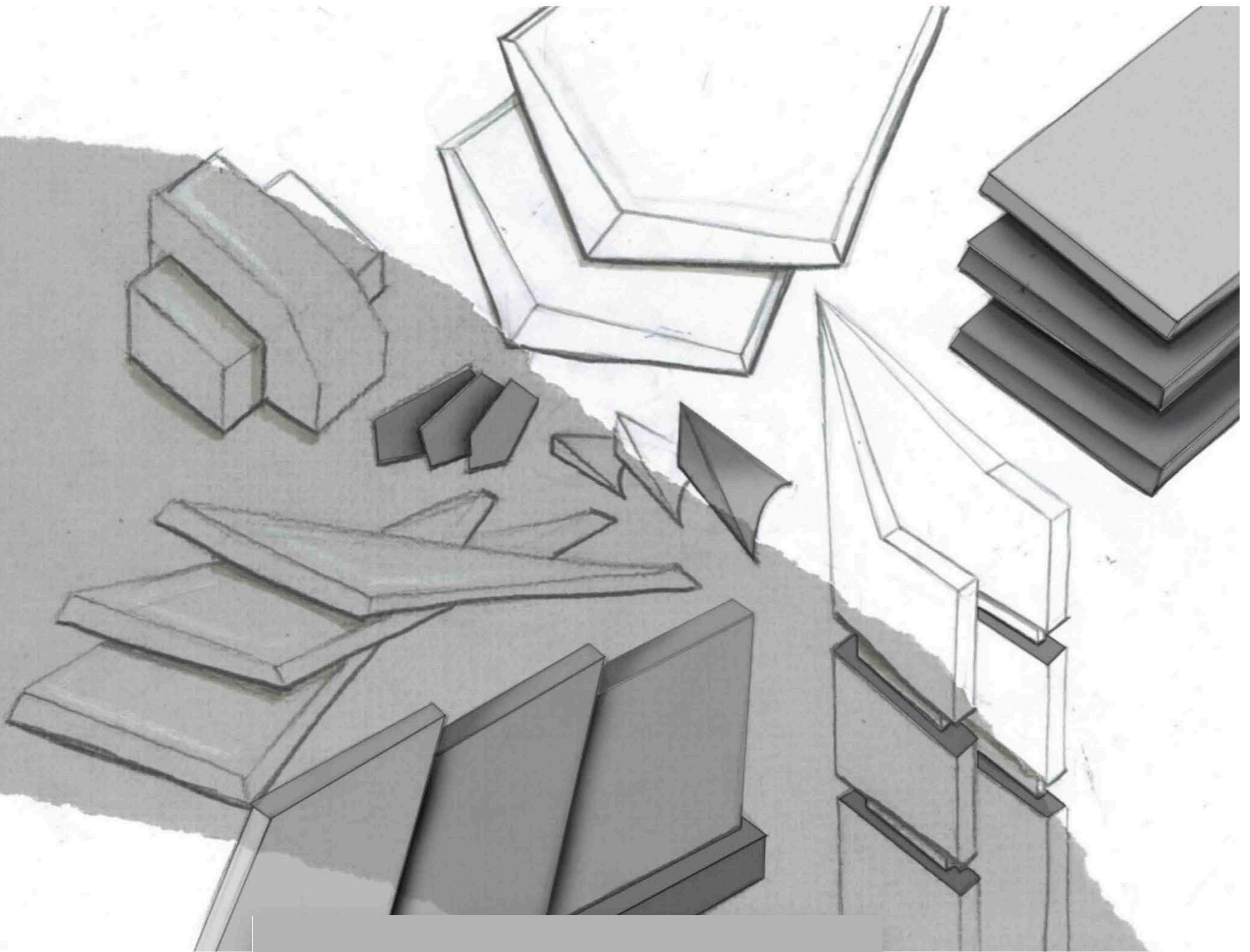


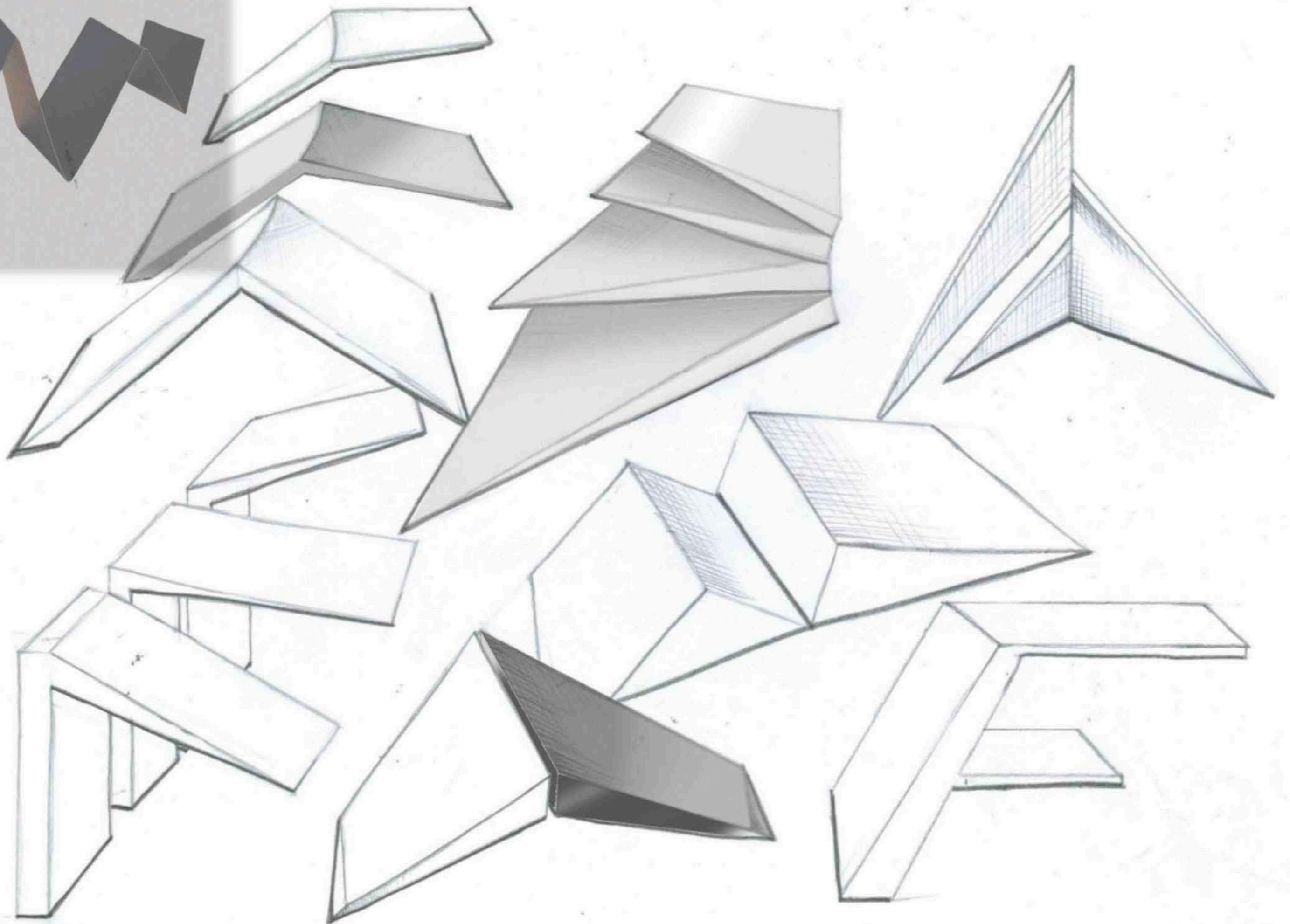
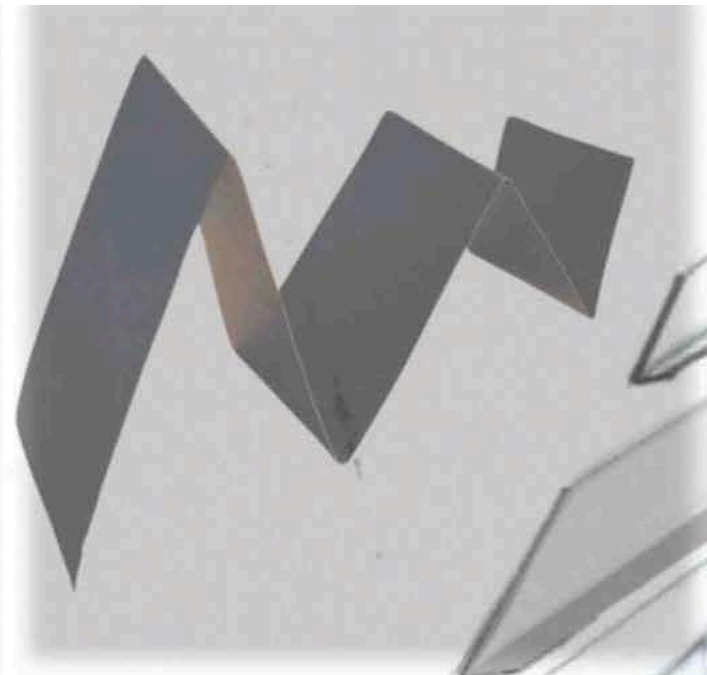


IDEATION

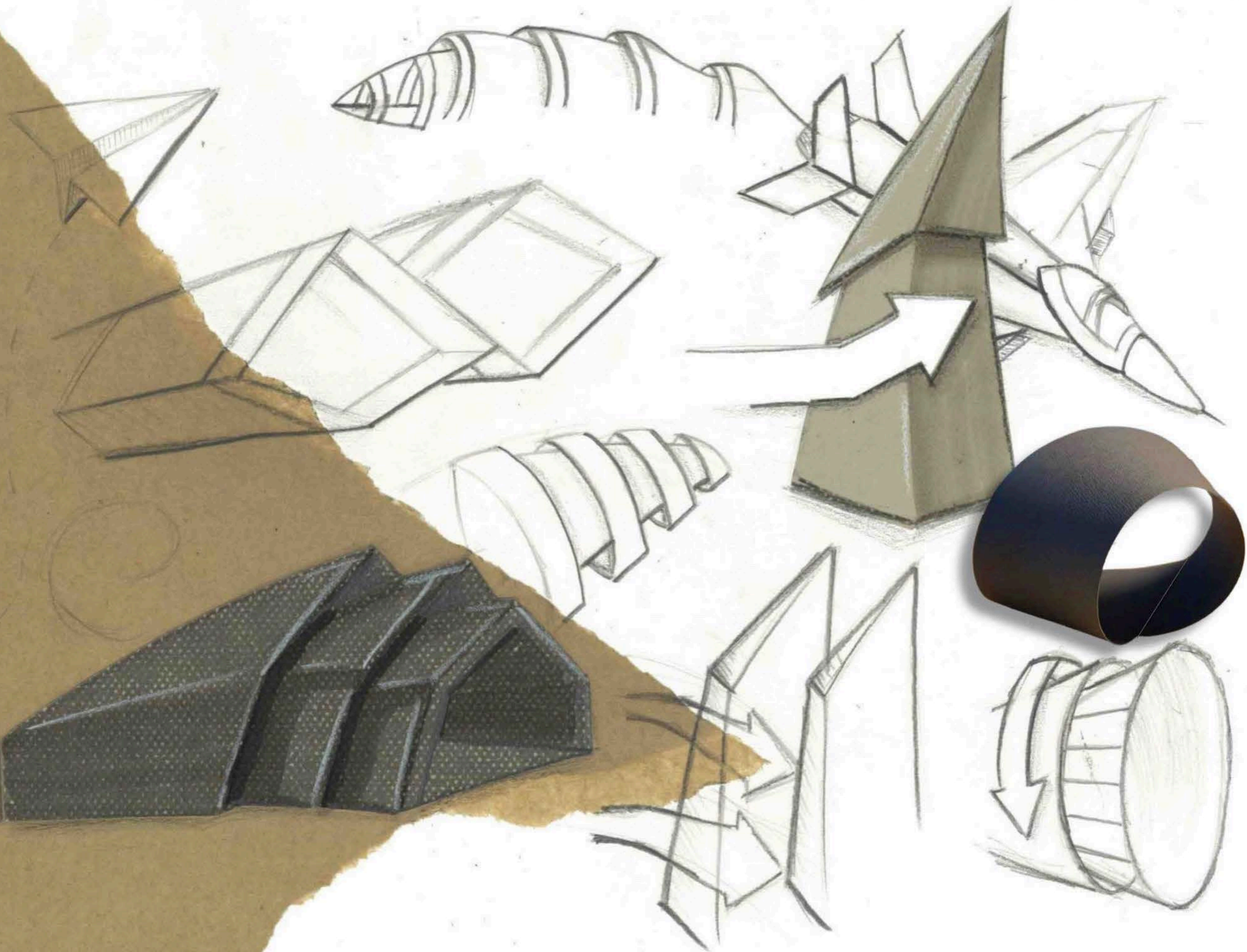


I D E A T I O N





I
D
E
A
T
T
I
O
N



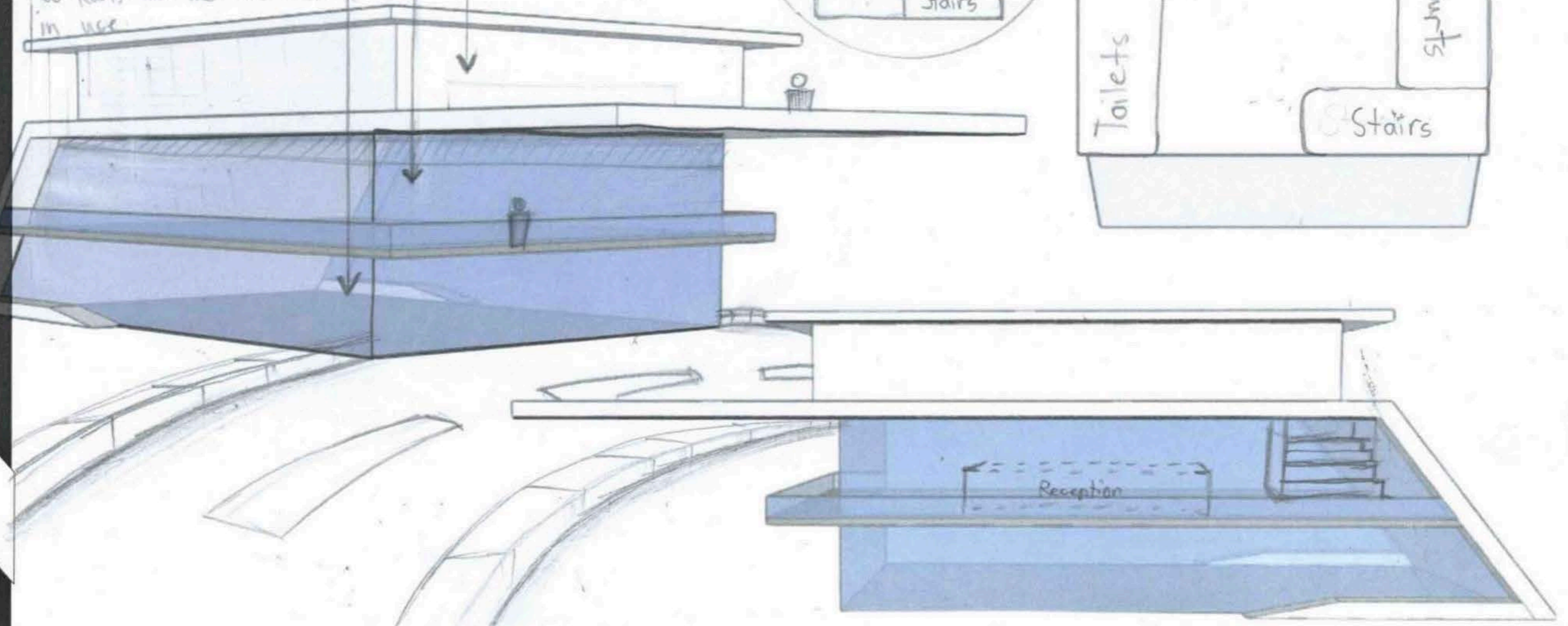
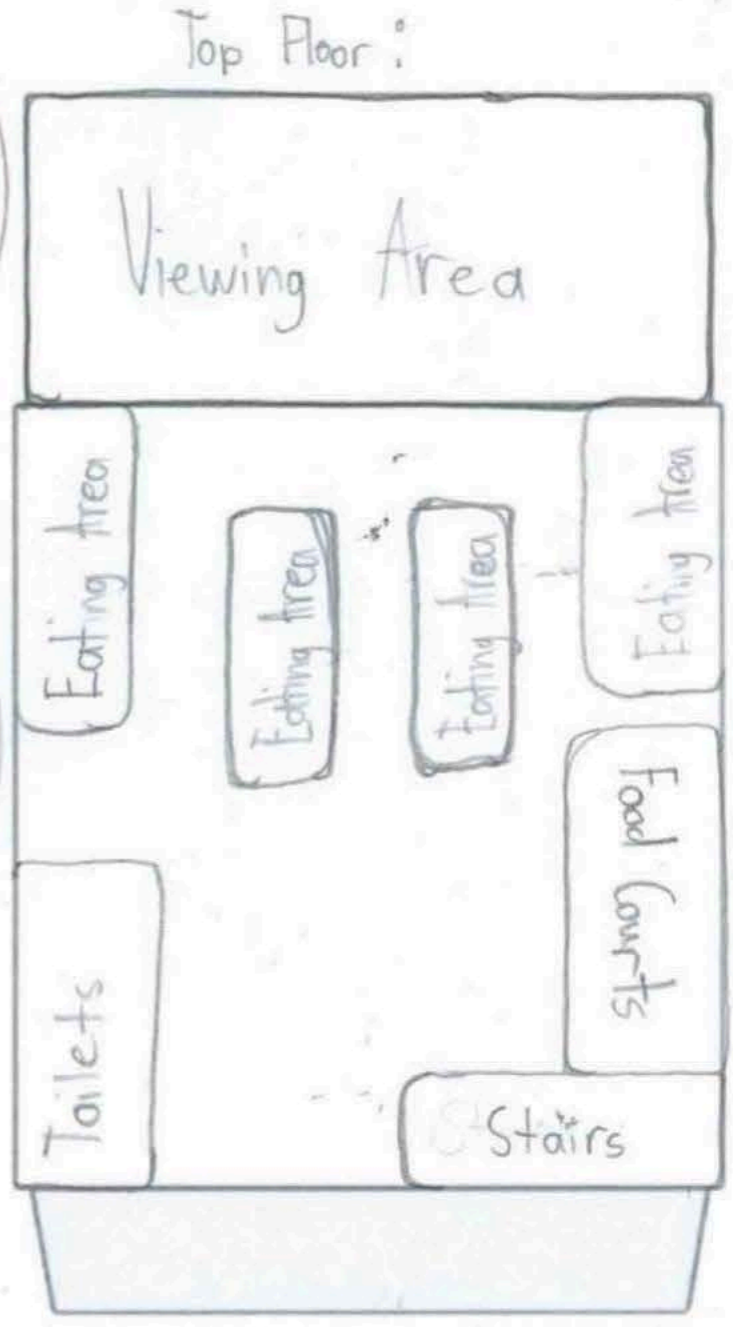
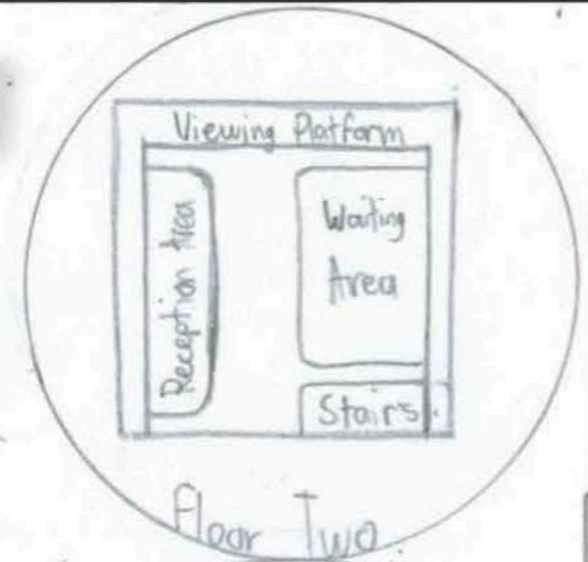
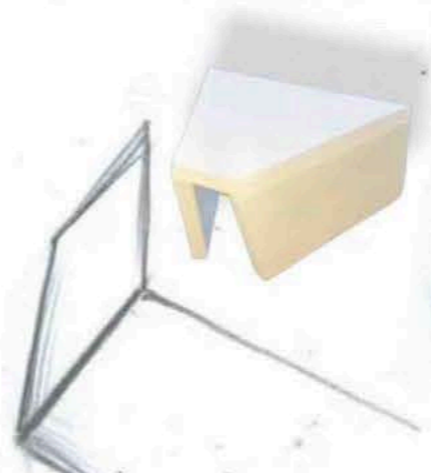
CONCEPT 1

Floor Three:
The third floor be the main floor. It will be where the food court and eating area will be located. It would also have a massive viewing area where you can see the whole track.

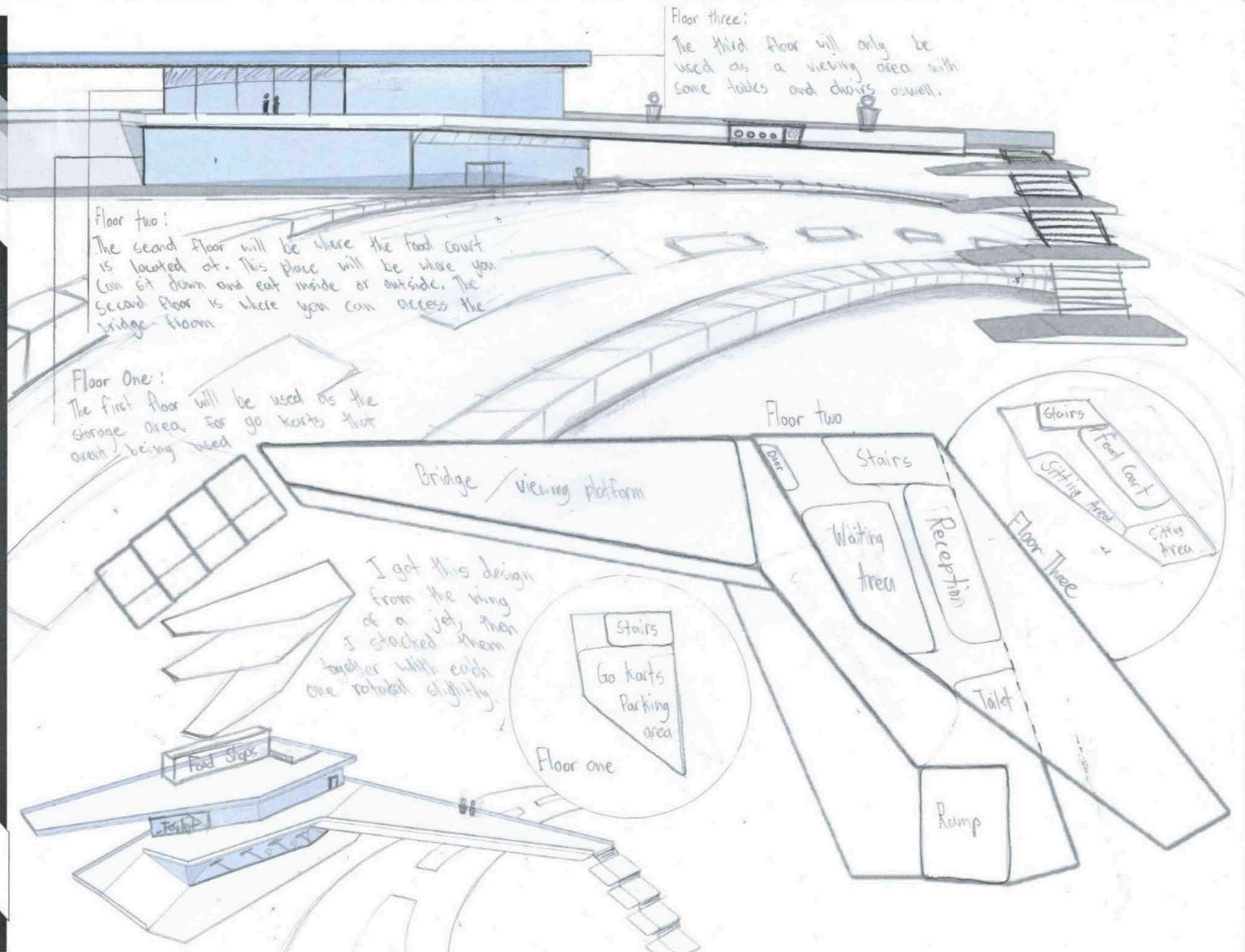
Floor Two:
The second floor is where the reception will be located at. The second floor will also have a small viewing platform.

Floor One:
Floor one will only be used as a place to store the go karts, like the are not in use.

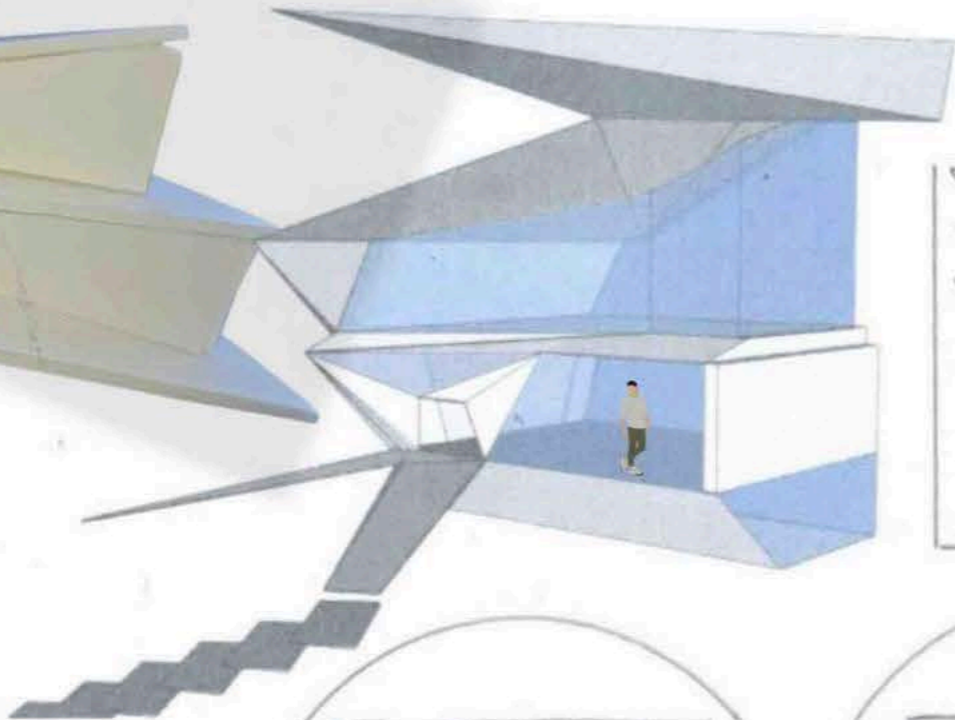
This design was based off the bend on some jets which is used to reduce drag



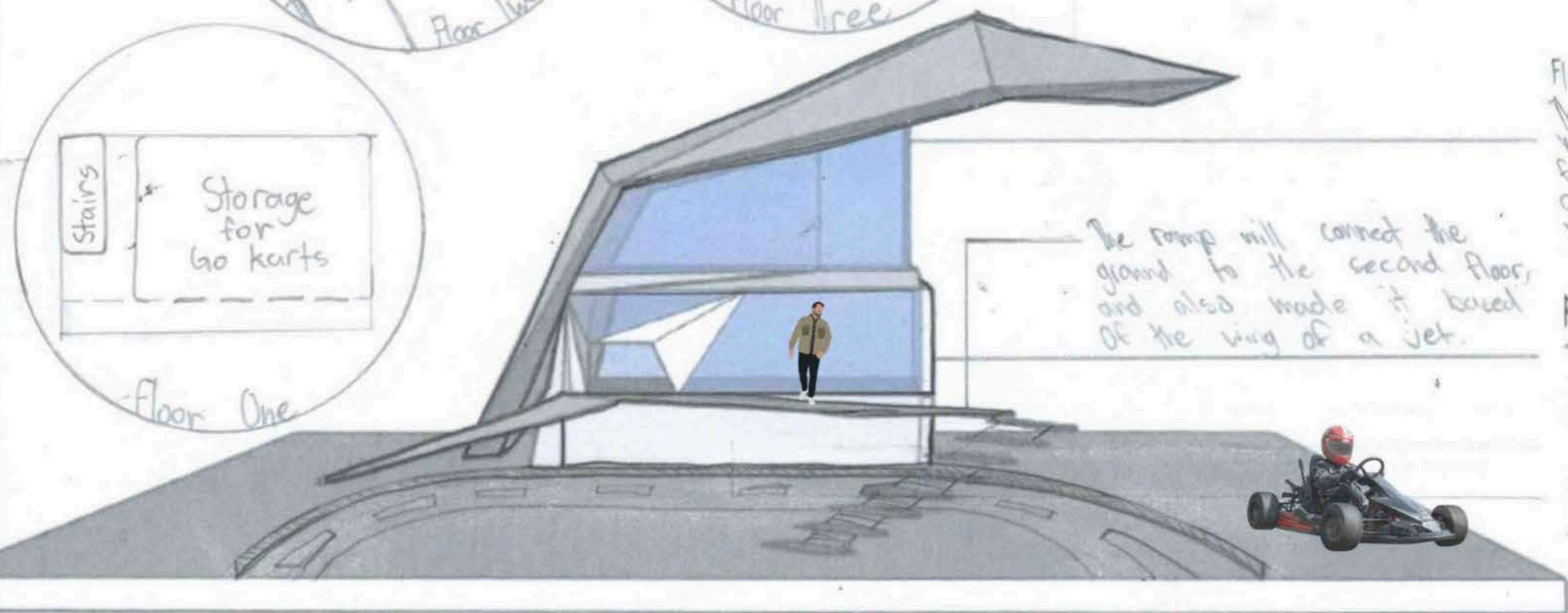
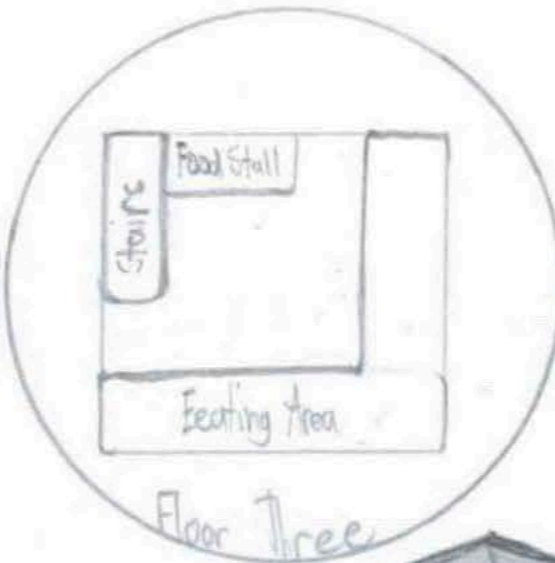
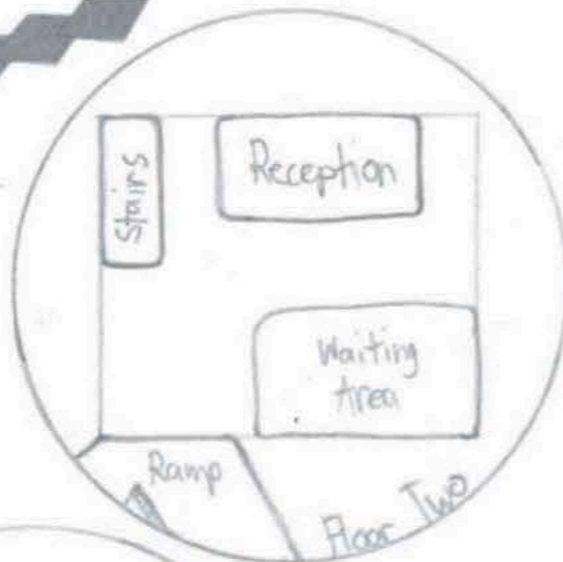
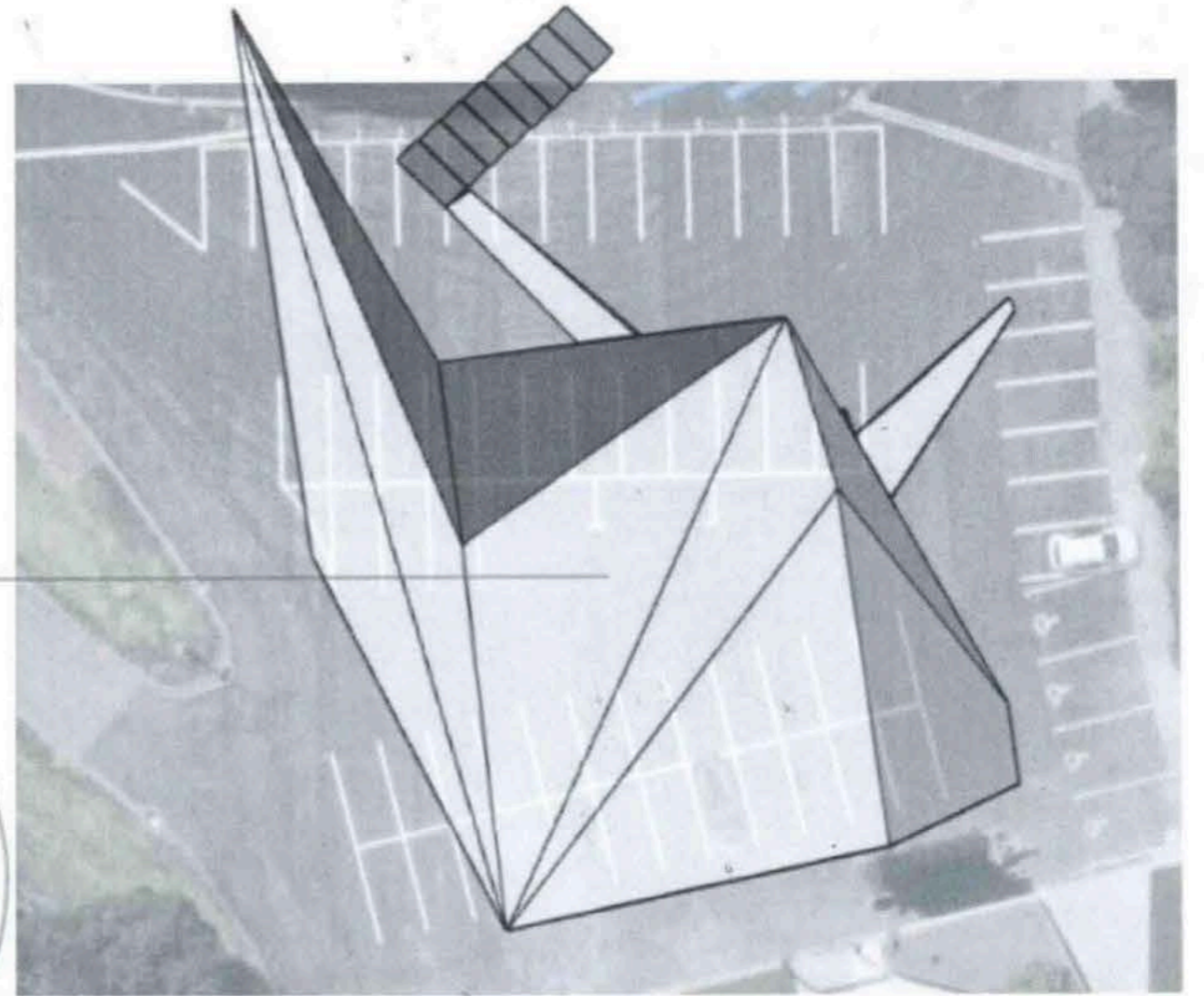
CONCEPT 2



CONCEPT 3



Designed the roof like this, based of the wings of a jet.



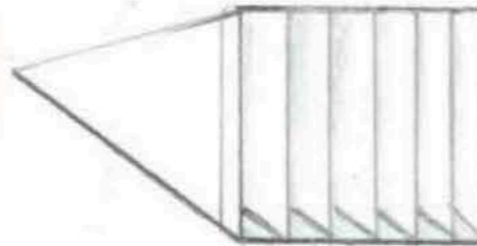
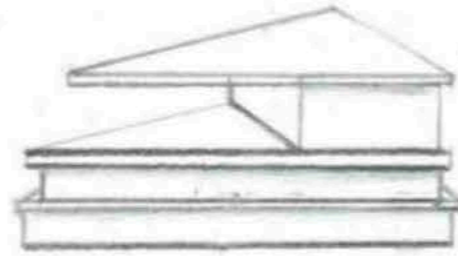
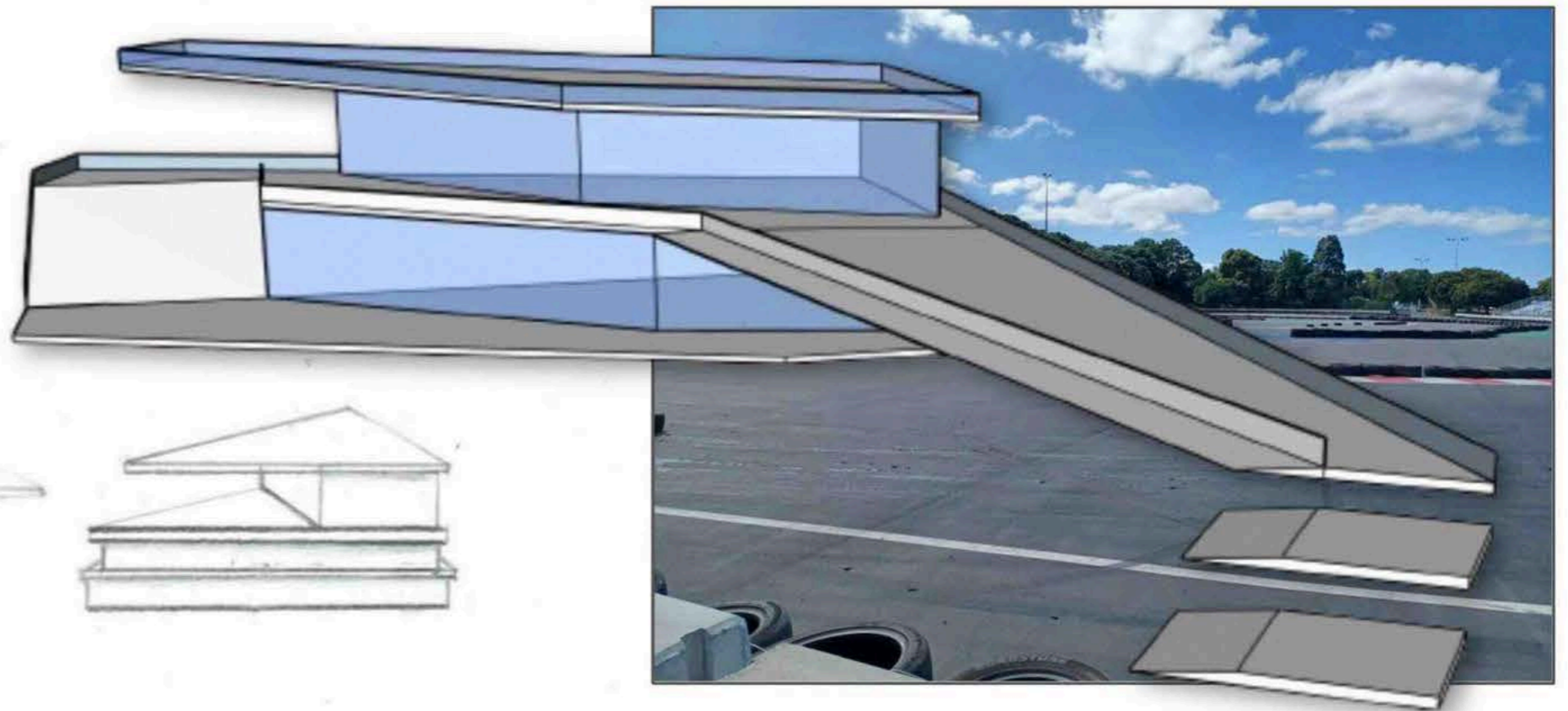
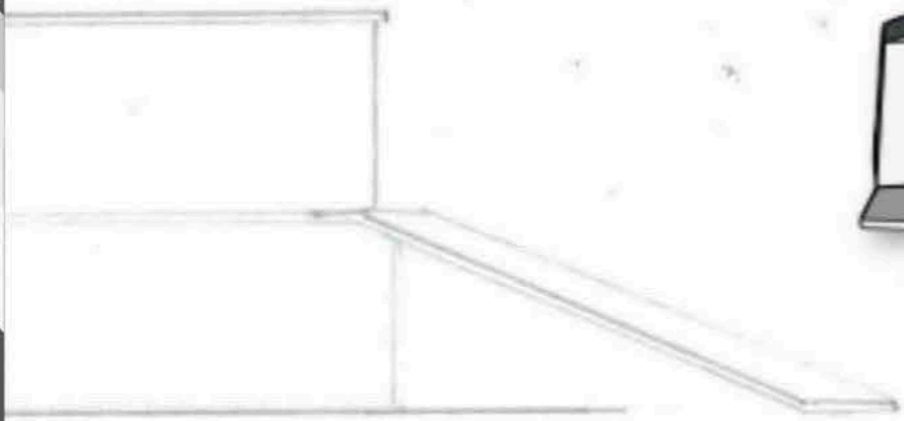
The ramp will connect the ground to the second floor, and also made it based of the wing of a jet.

Floor Three:
The third floor will be the main room, it will have the food court and plenty of seats and tables looking at the whole track.

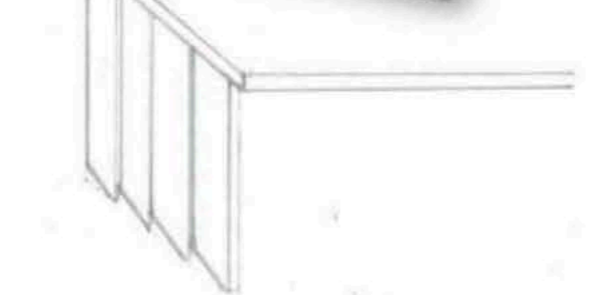
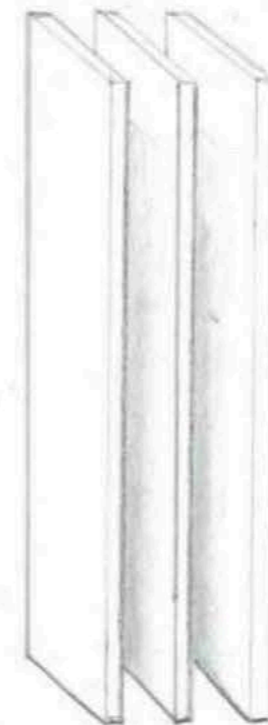
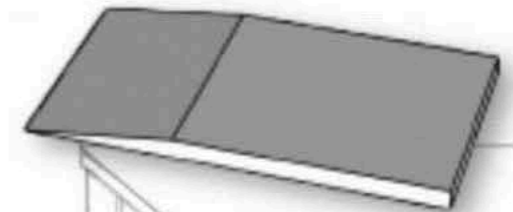
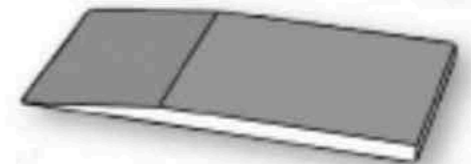
Floor Two:
The second floor will be used as the reception and waiting room.

Floor One:
The first floor will be used as the storage room for the karts when not used.

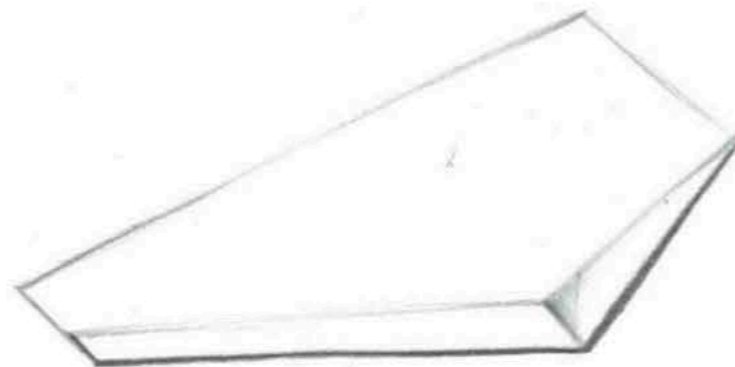
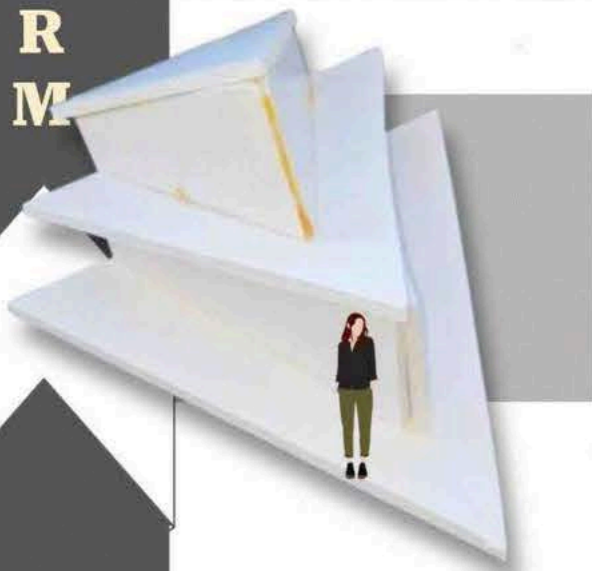
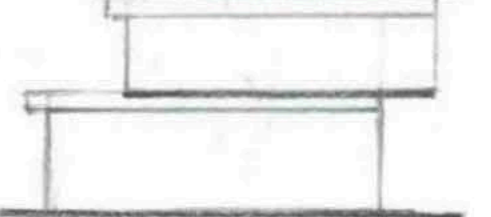
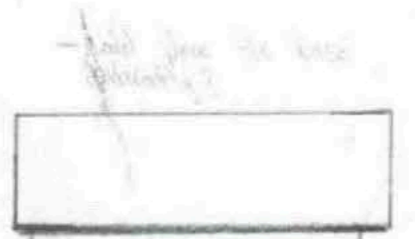
DEVELOPMENT FORM



Some just have these types of vent, so I wanted to include part of it to my design.

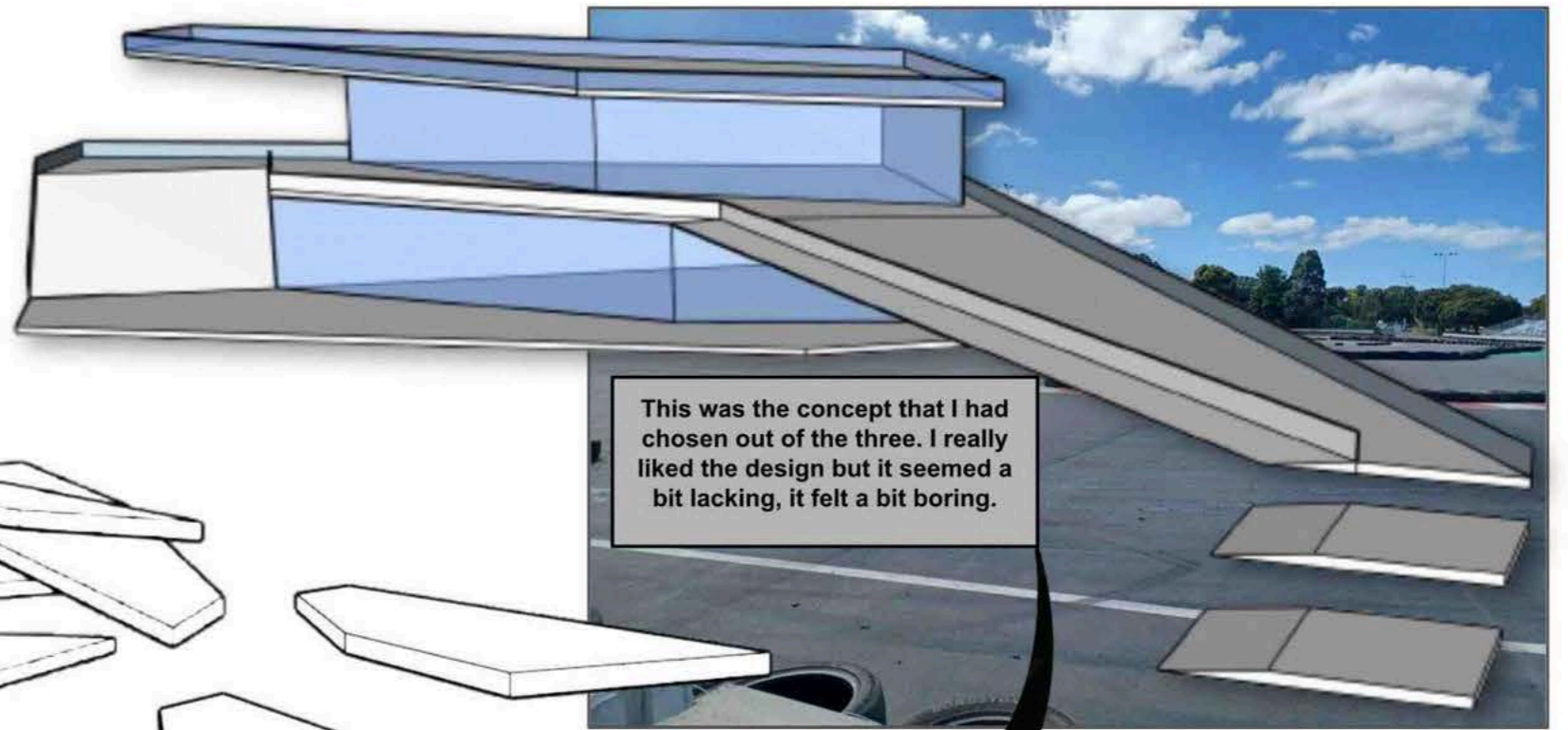
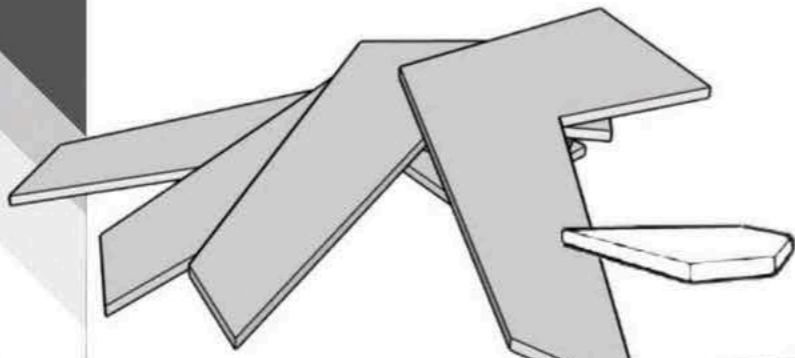


Handwritten notes: "I just wanted to have a little bit of the roof line" and "I just wanted to have a little bit of the roof line".

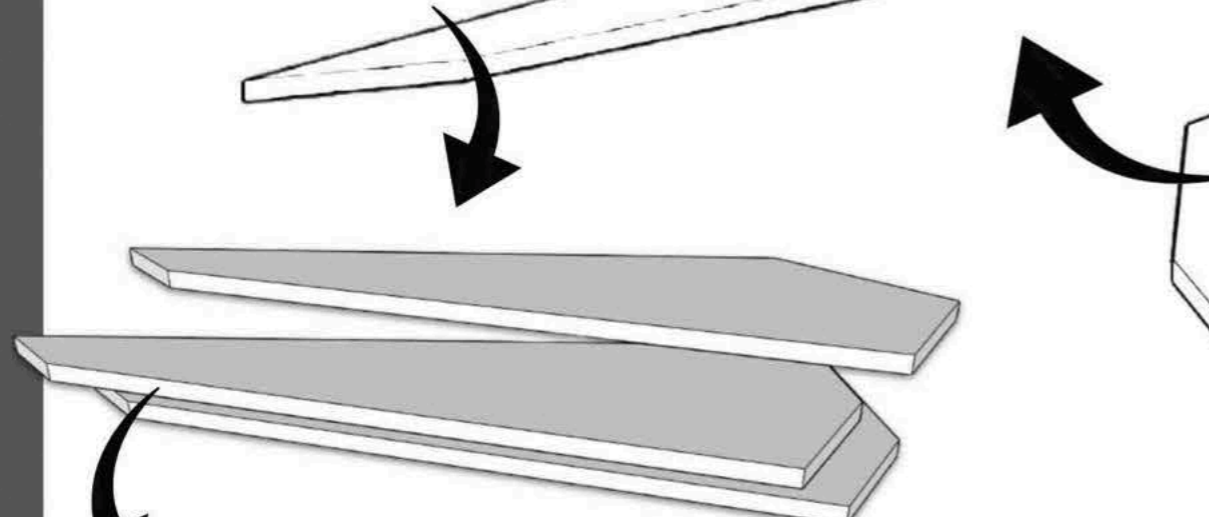
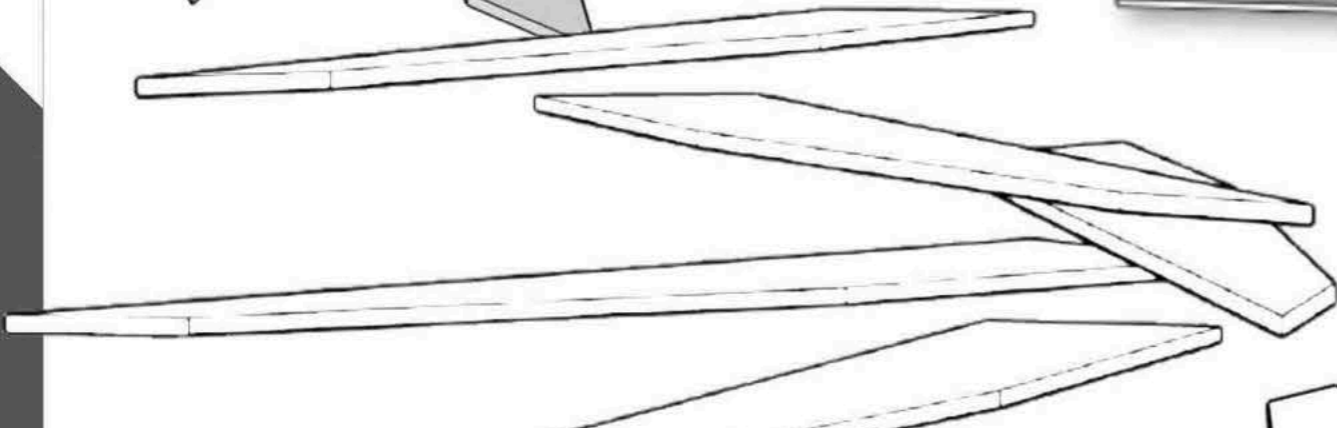


The roof of my design was pretty basic so I wanted to change it a little bit.

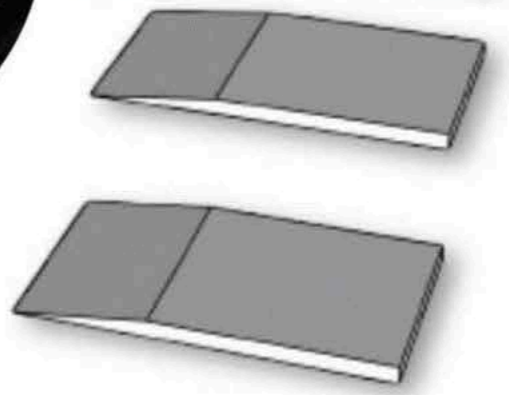
DEVELOPMENT FORM



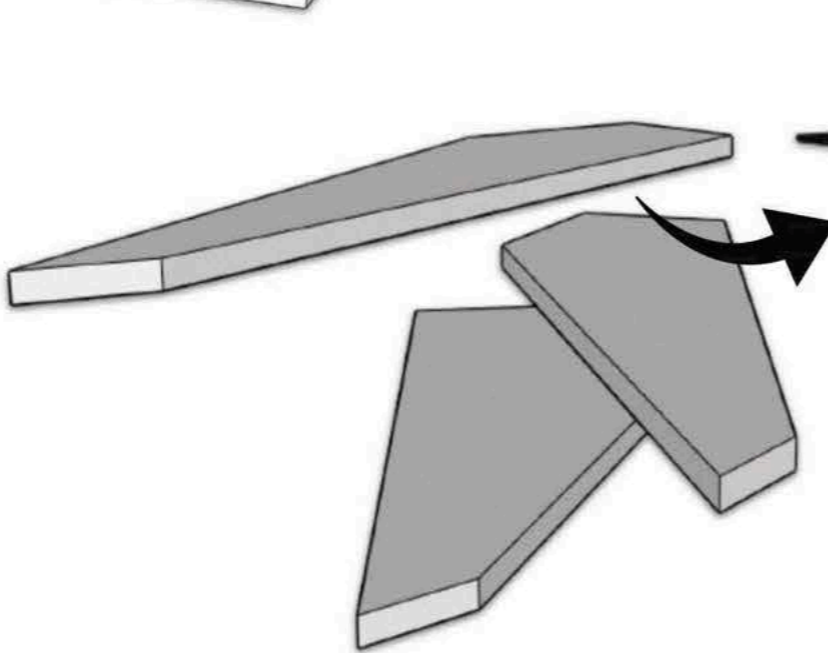
This was the concept that I had chosen out of the three. I really liked the design but it seemed a bit lacking, it felt a bit boring.



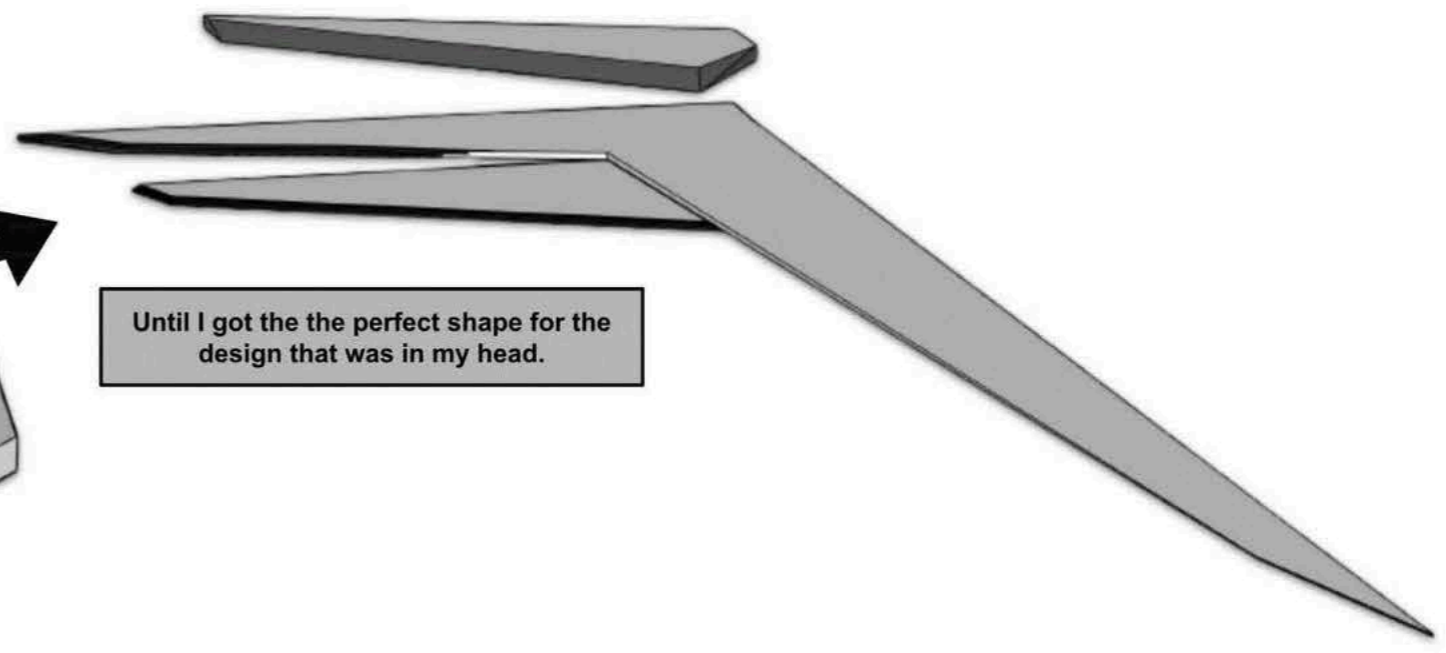
I started to try different shapes or pattern for the base of my design



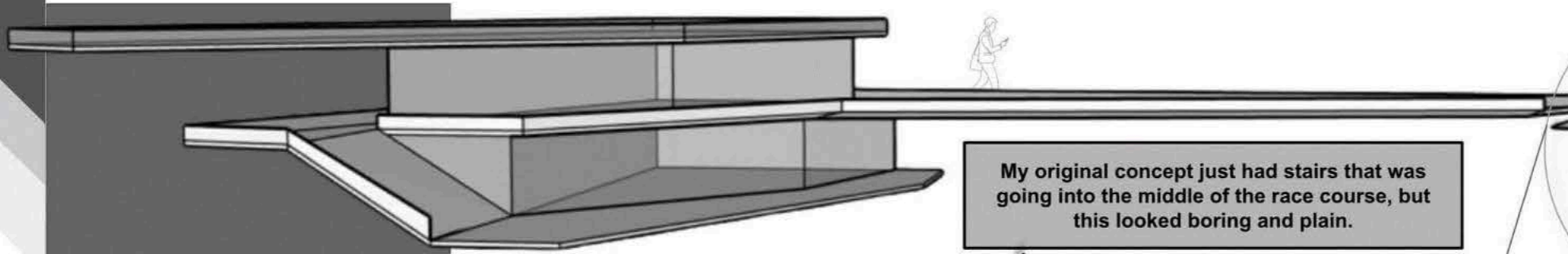
After trying many different styles I really liked this one the most. So I started to develop it some more by changing the angles, and shape



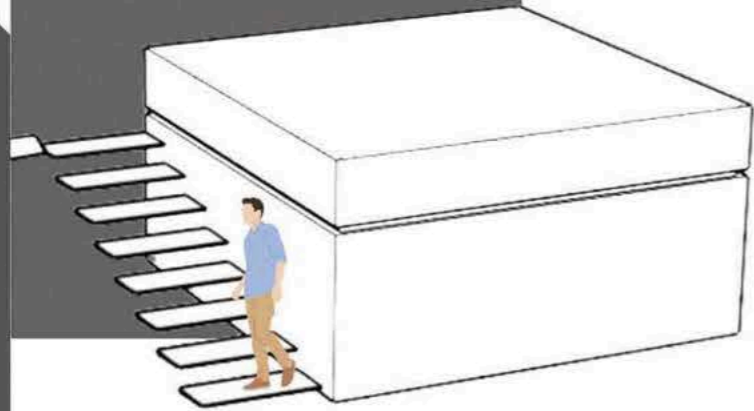
Until I got the the perfect shape for the design that was in my head.



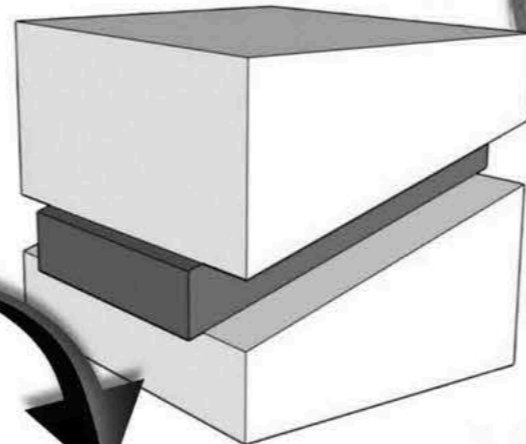
DEVELOPMENT
FORM



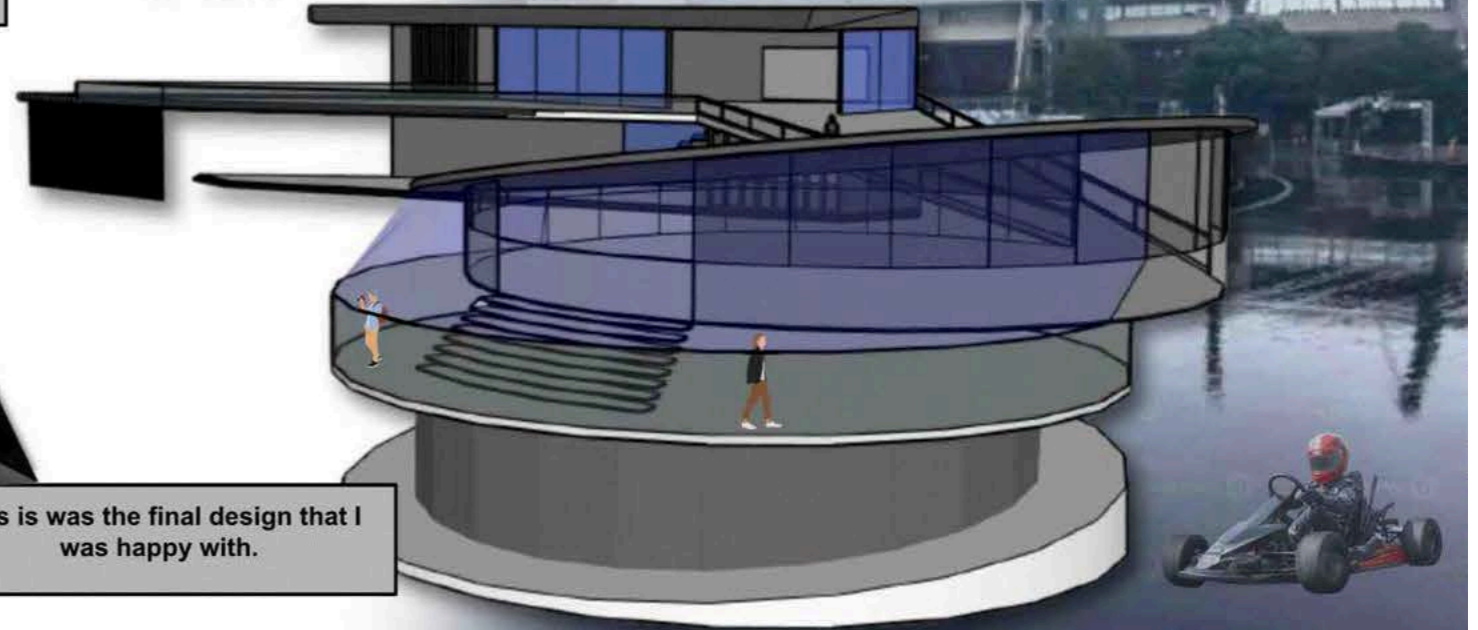
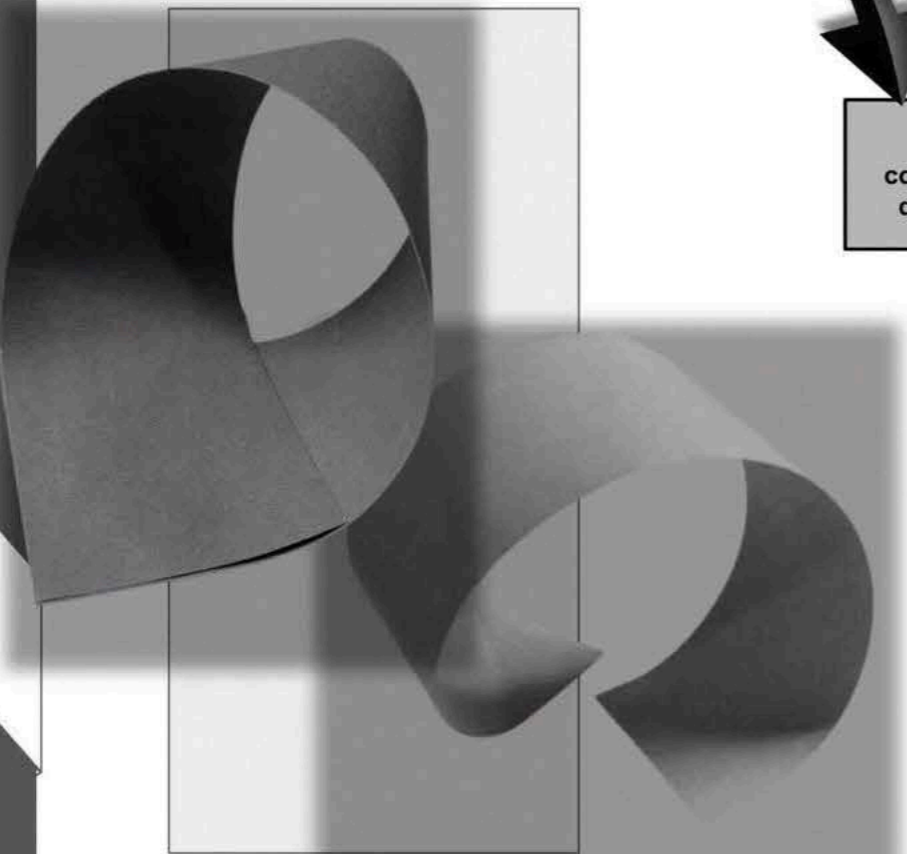
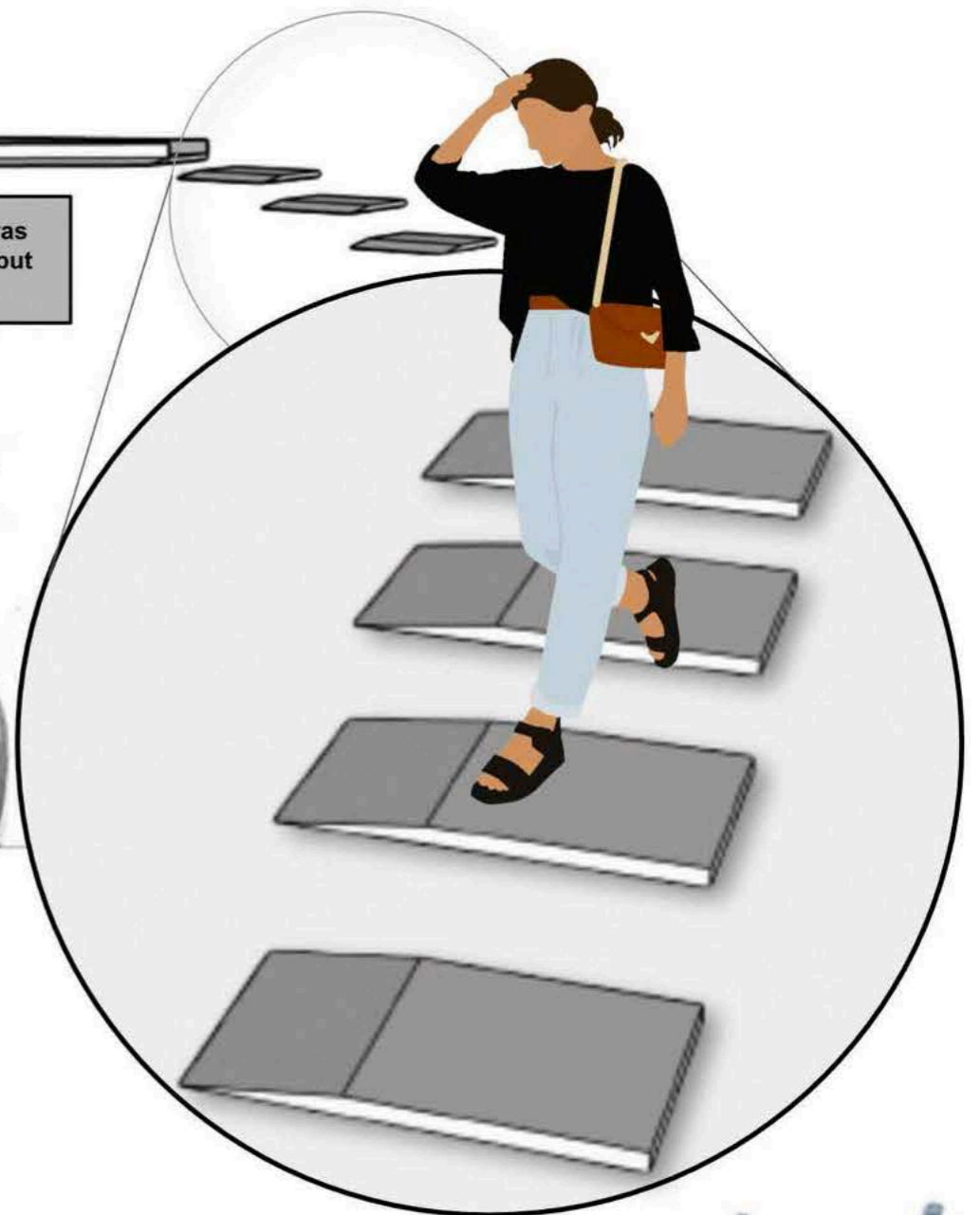
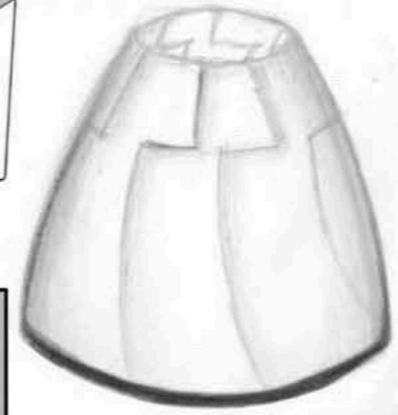
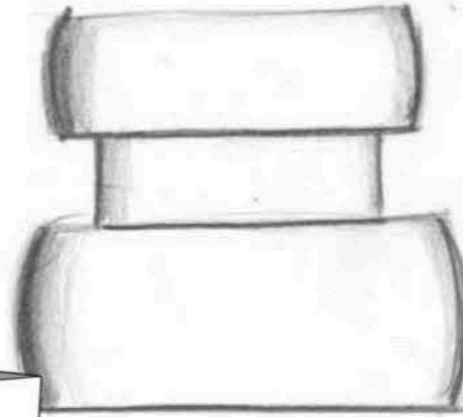
My original concept just had stairs that was going into the middle of the race course, but this looked boring and plain.



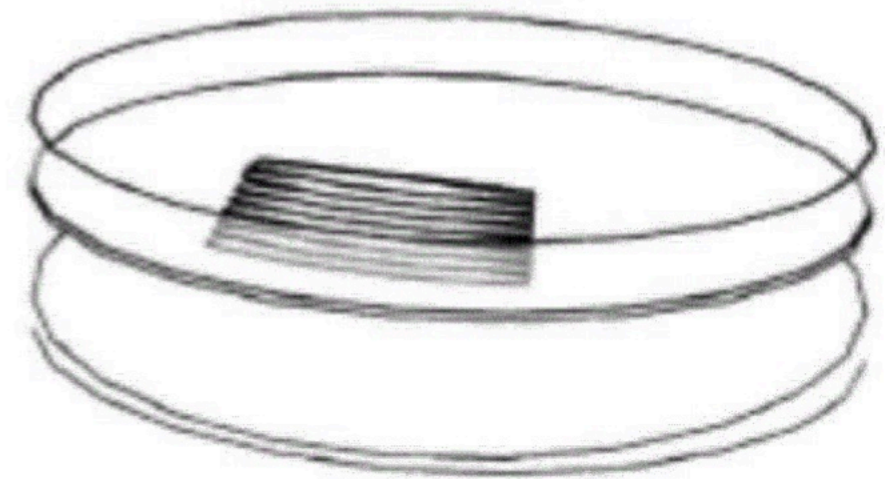
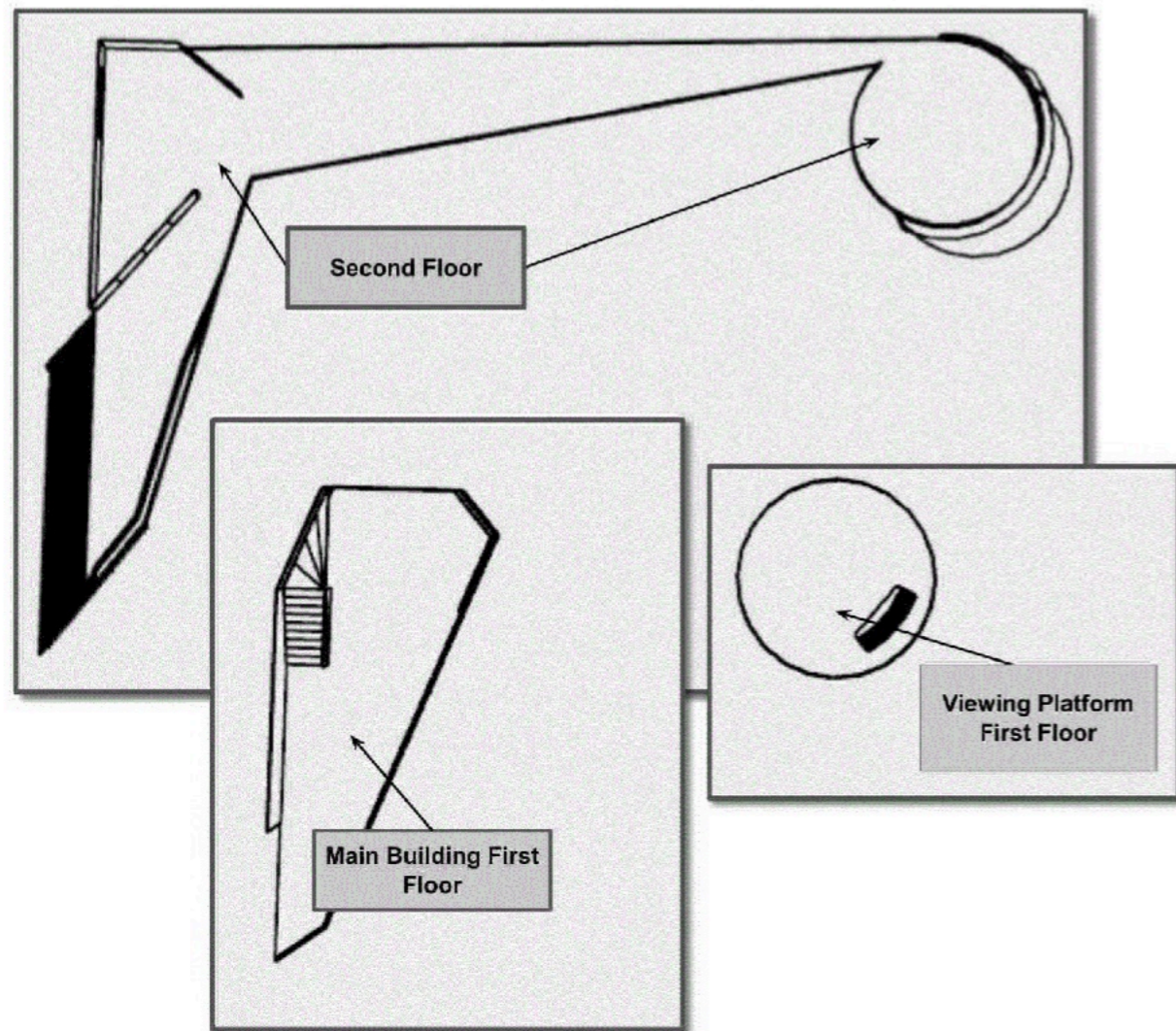
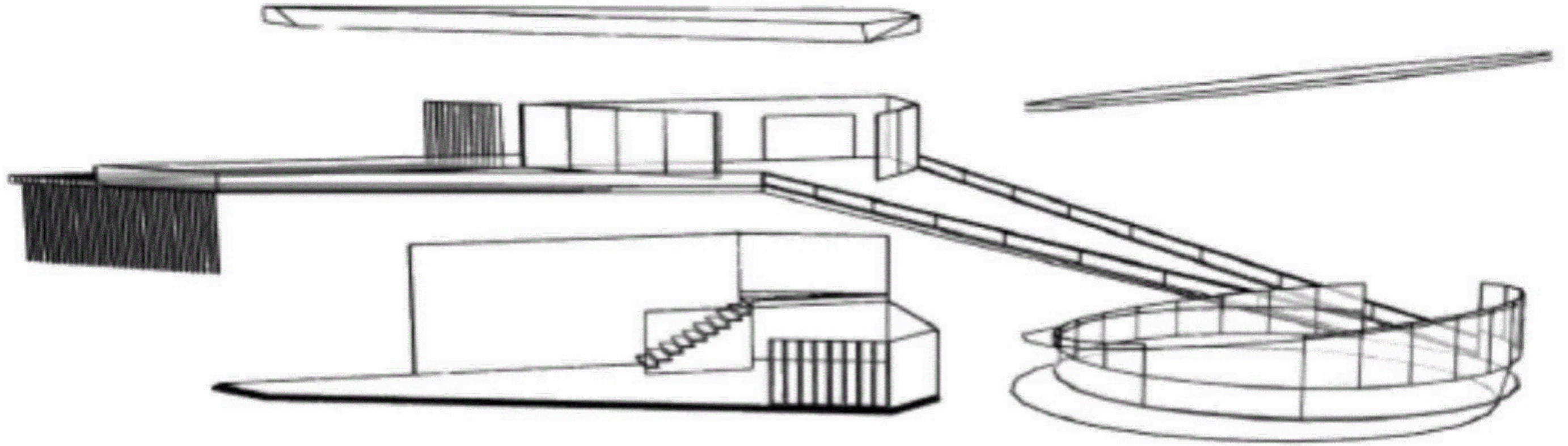
So i decided that I wanted the bridge to lead into a platform in the middle of the track, where people could enjoy the race from all sides.



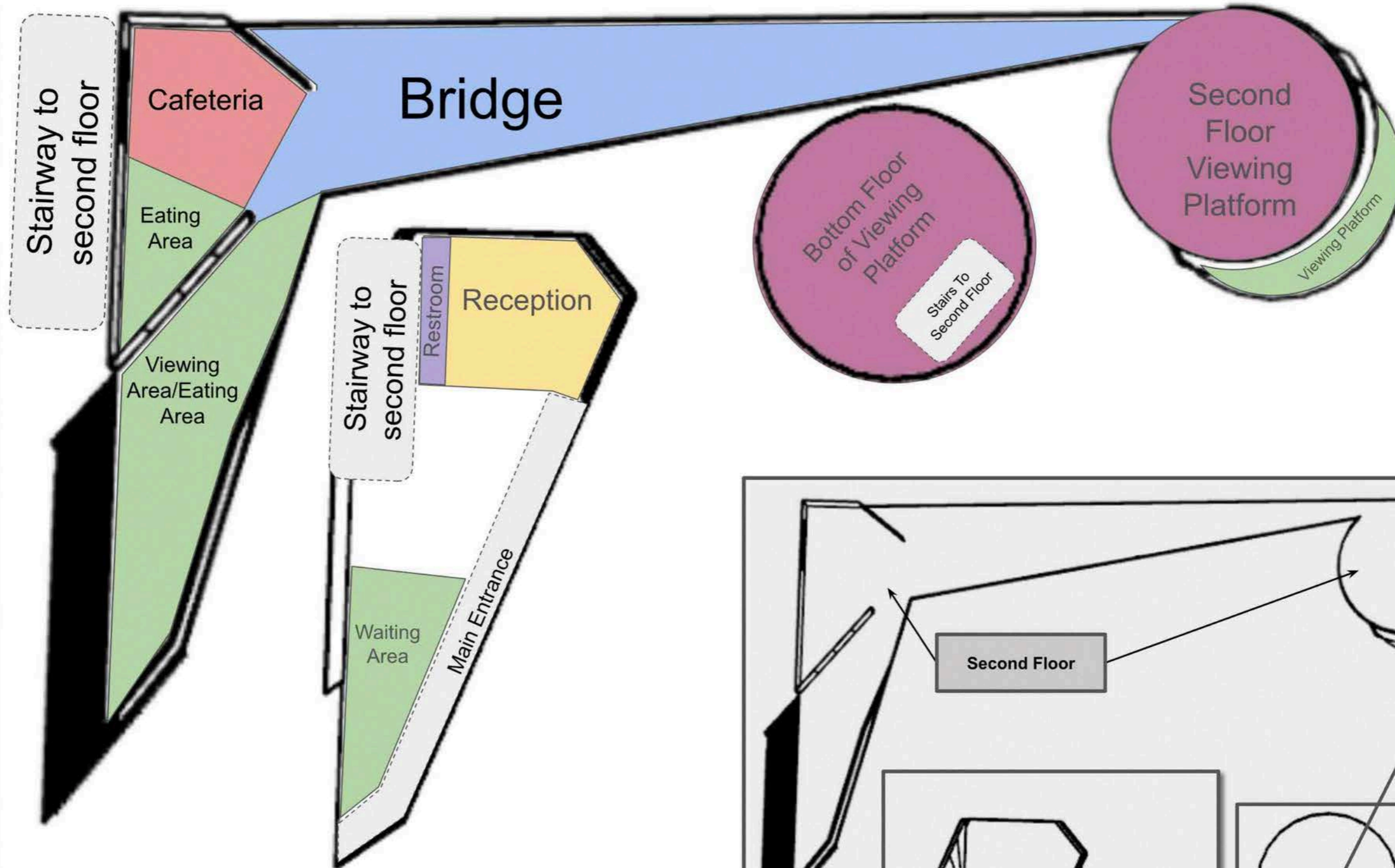
I tried different shapes and combinations, trying to find the design that I was happy with.



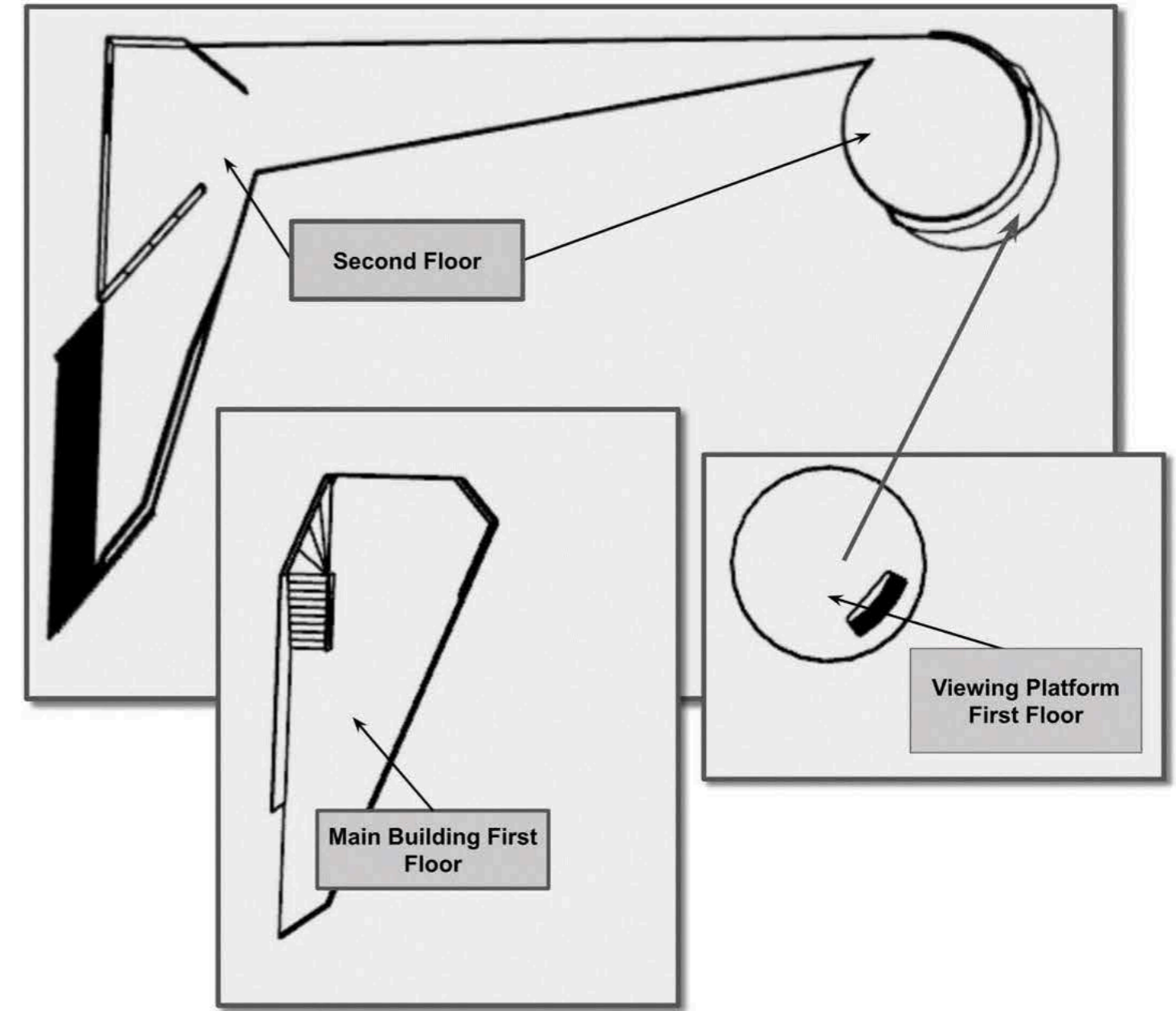
This is was the final design that I was happy with.



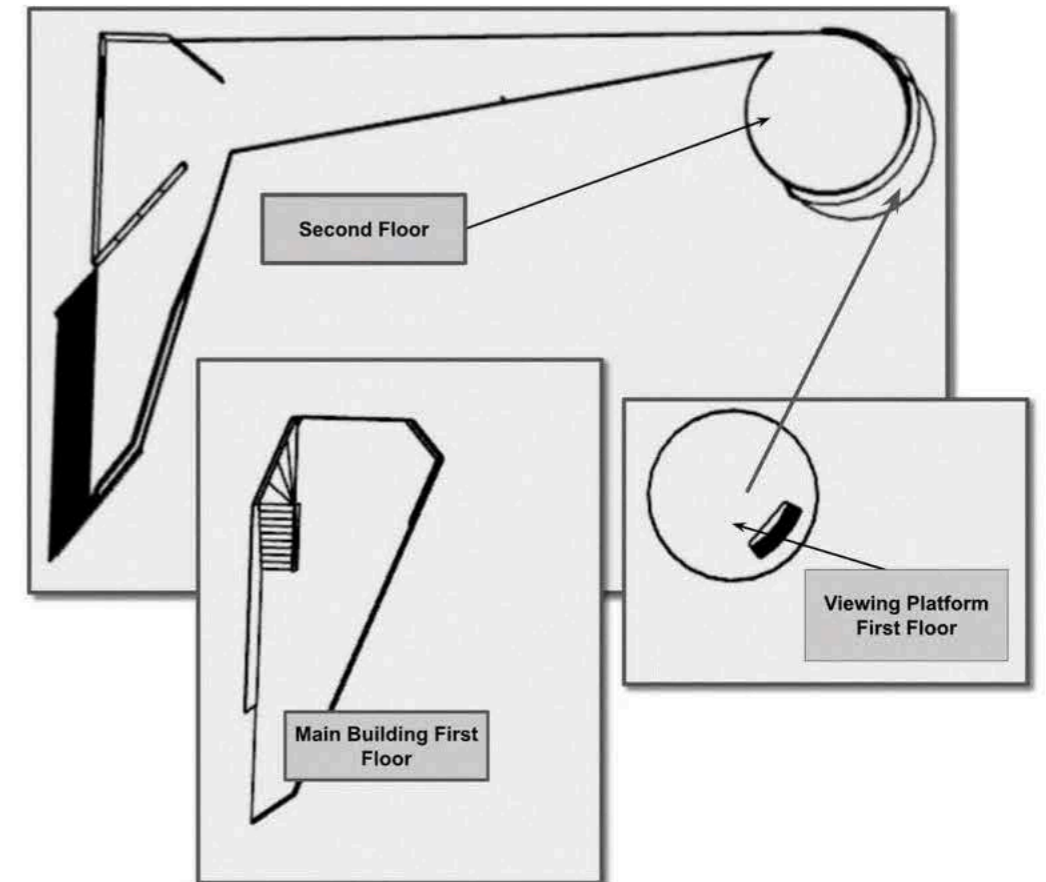
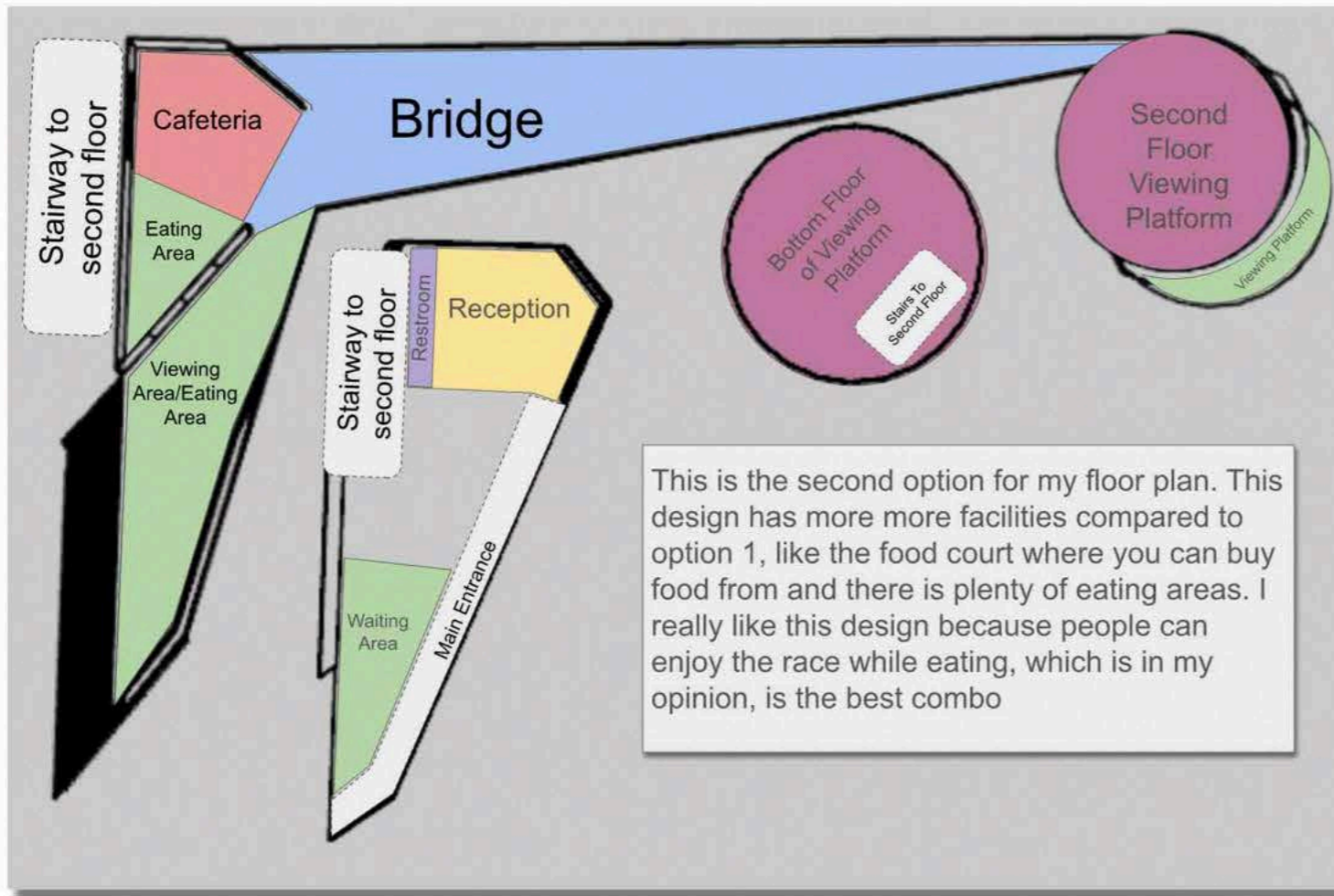
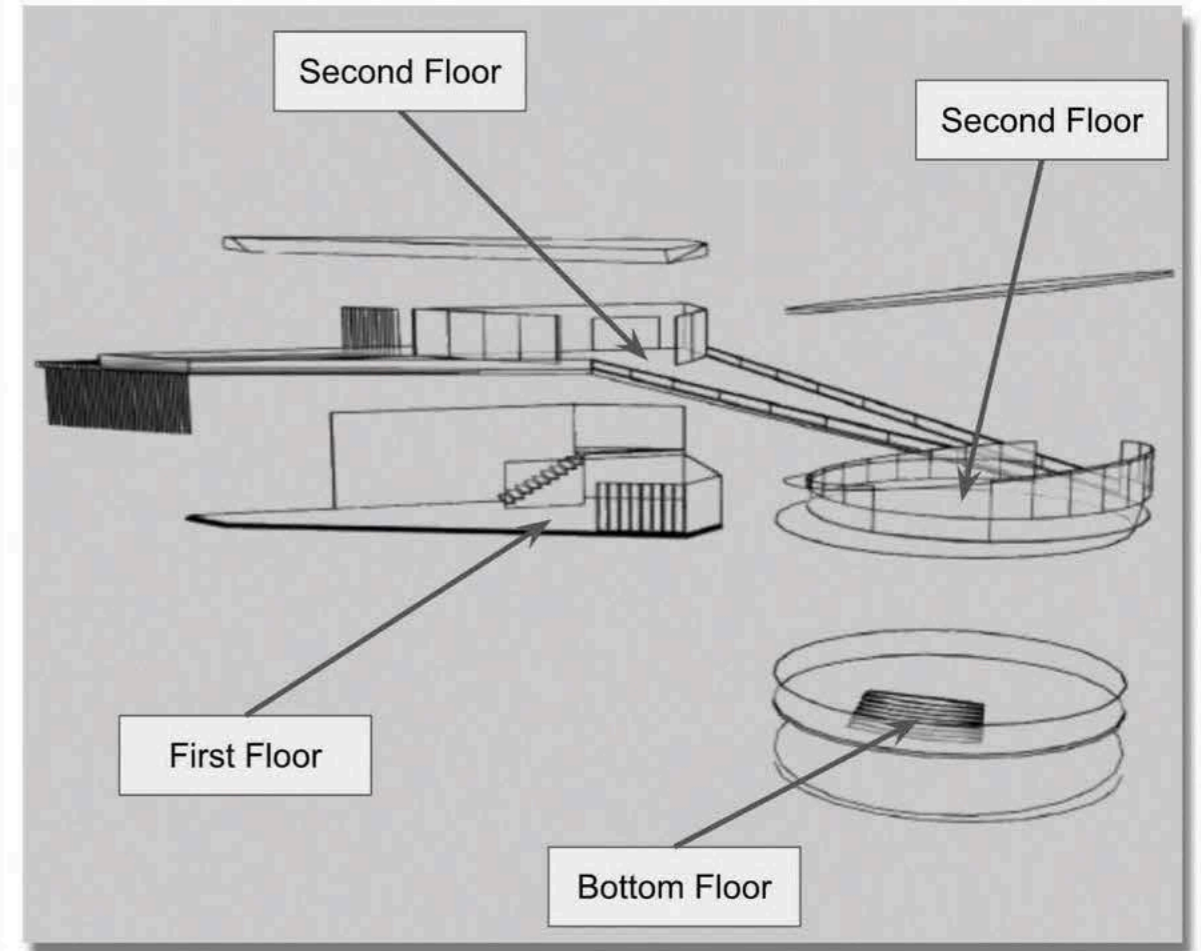
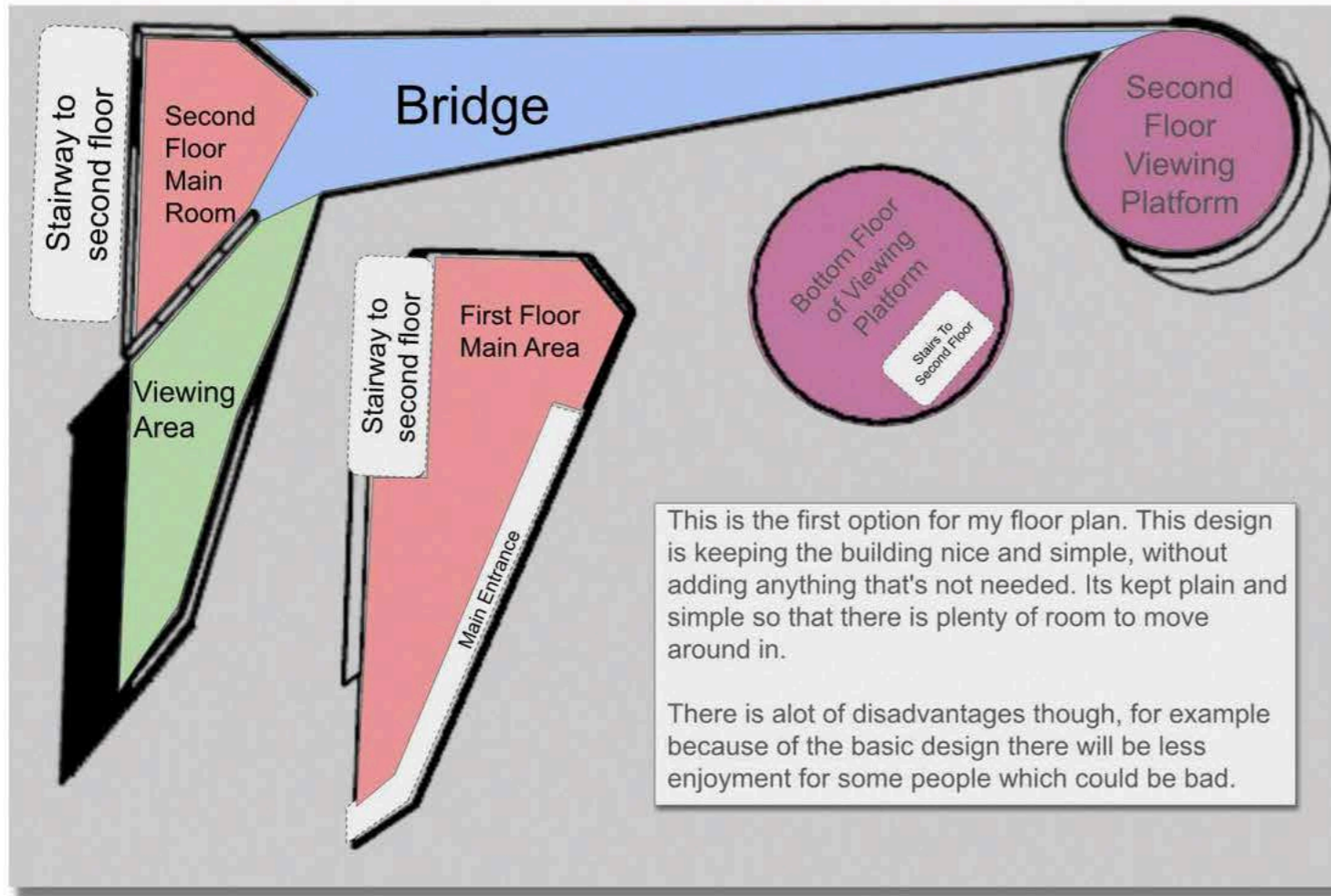
FLOOR PLAN 2



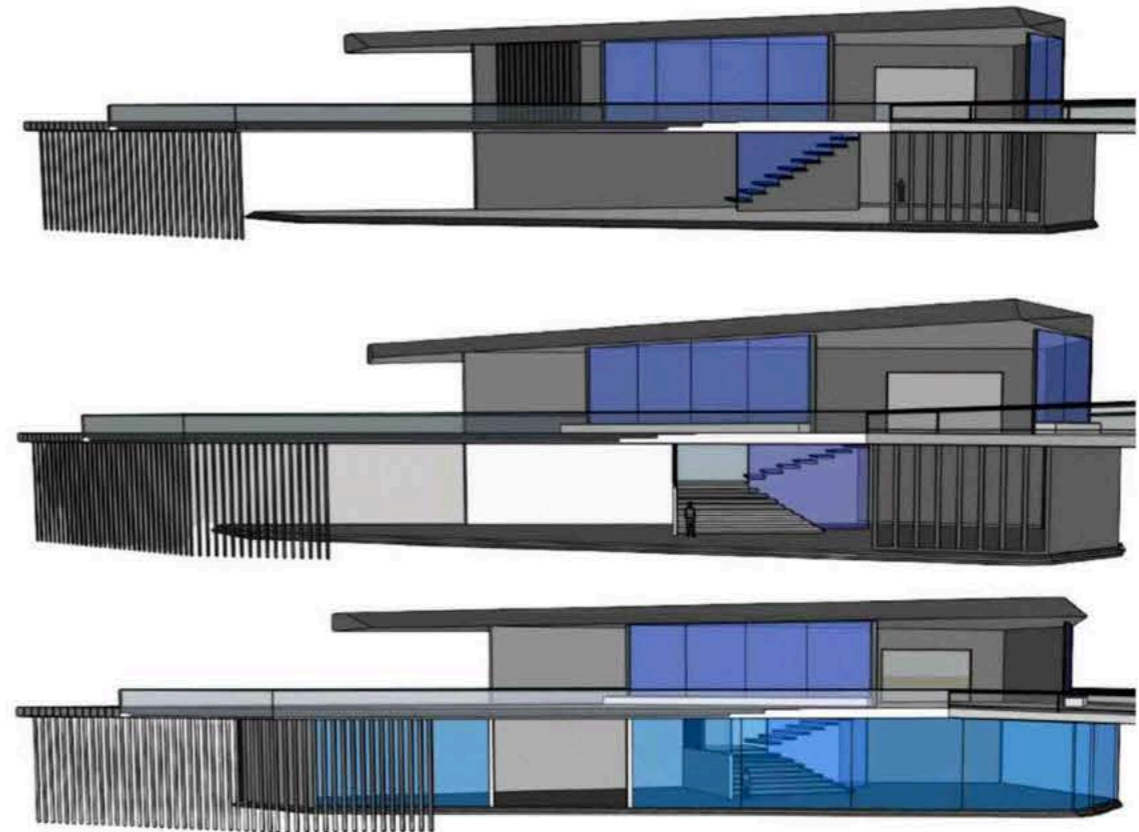
This is the second option for my floor plan. This design has more more facilities compared to option 1, like the food court where you can buy food from and there is plenty of eating areas. I really like this design because people can enjoy the race while eating, which is in my opinion, is the best combo



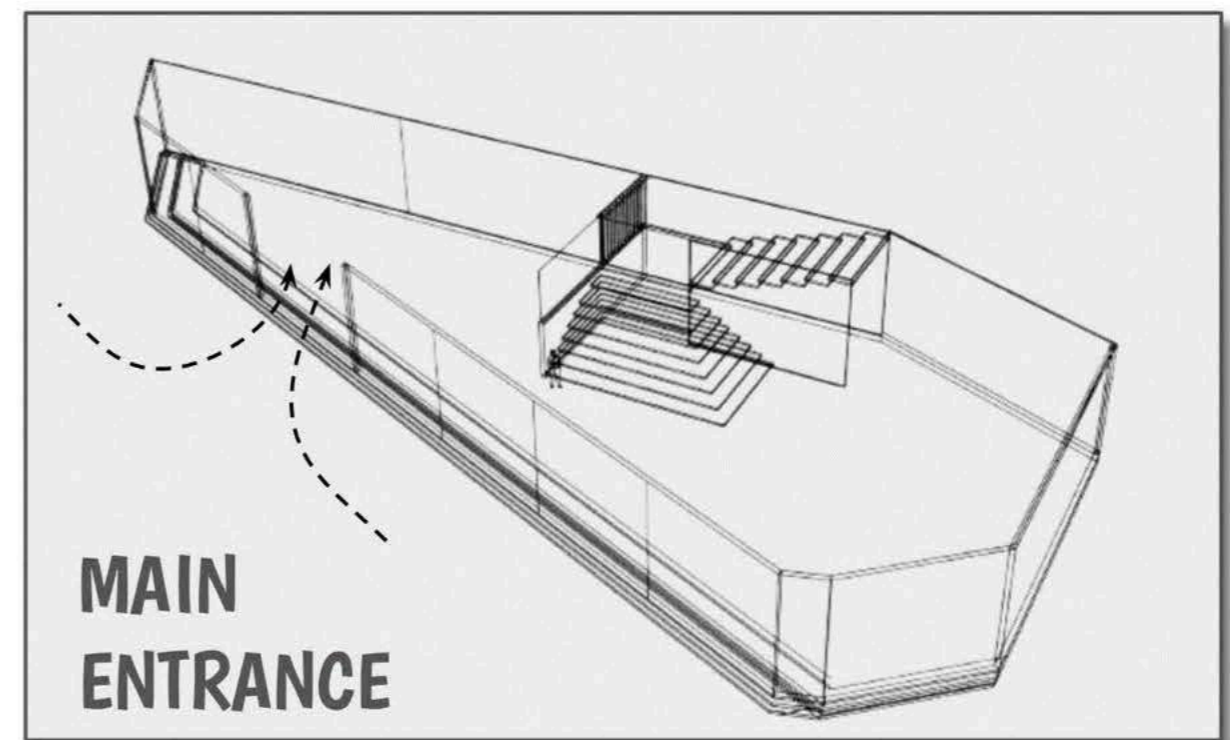
FLOOR PLAN 2



The entrance of a building is important because it is the first point of contact with the building. This point of contact is what gives the first impressions of what you can expect to be inside.

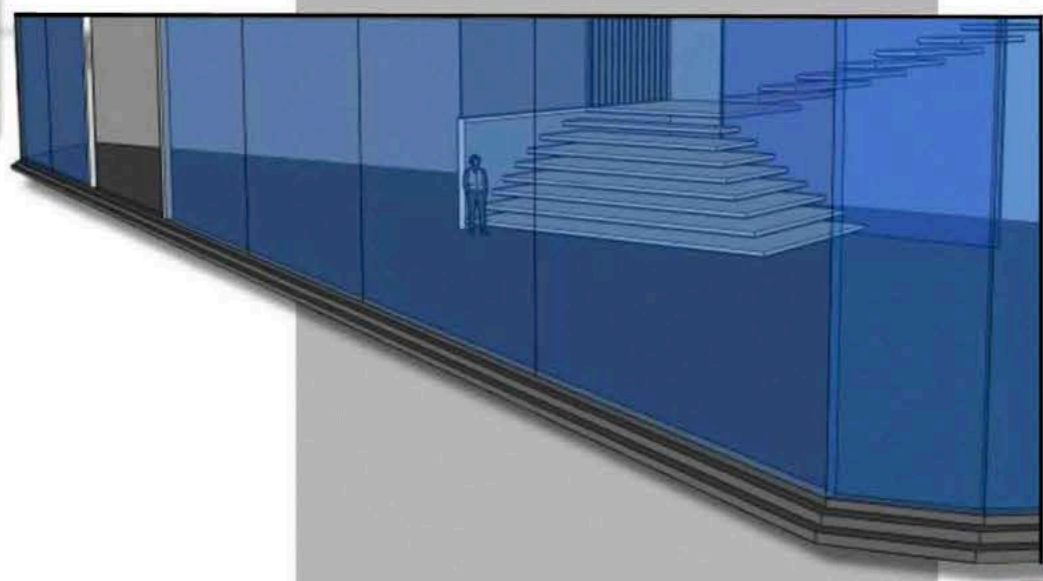
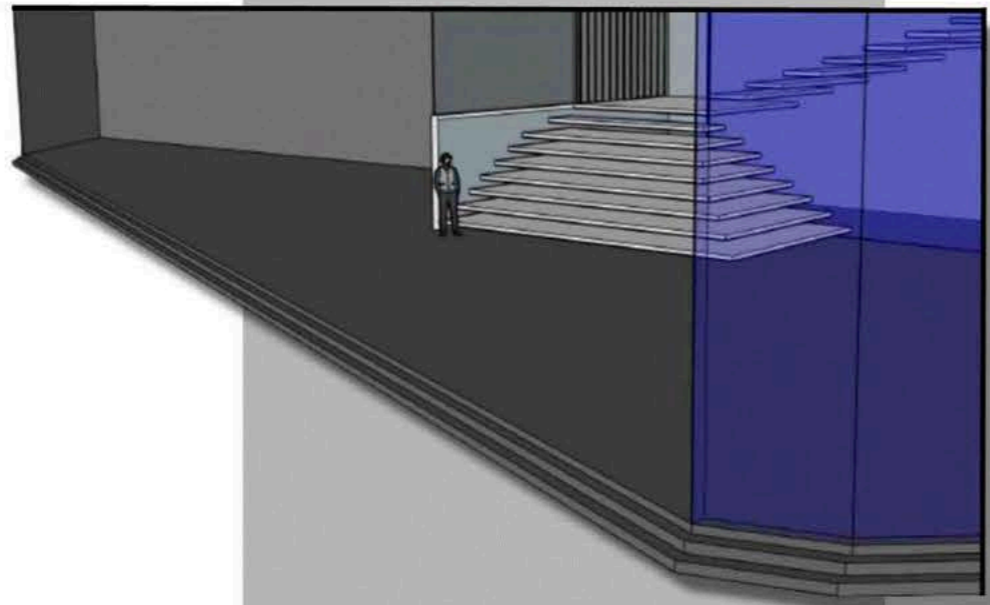
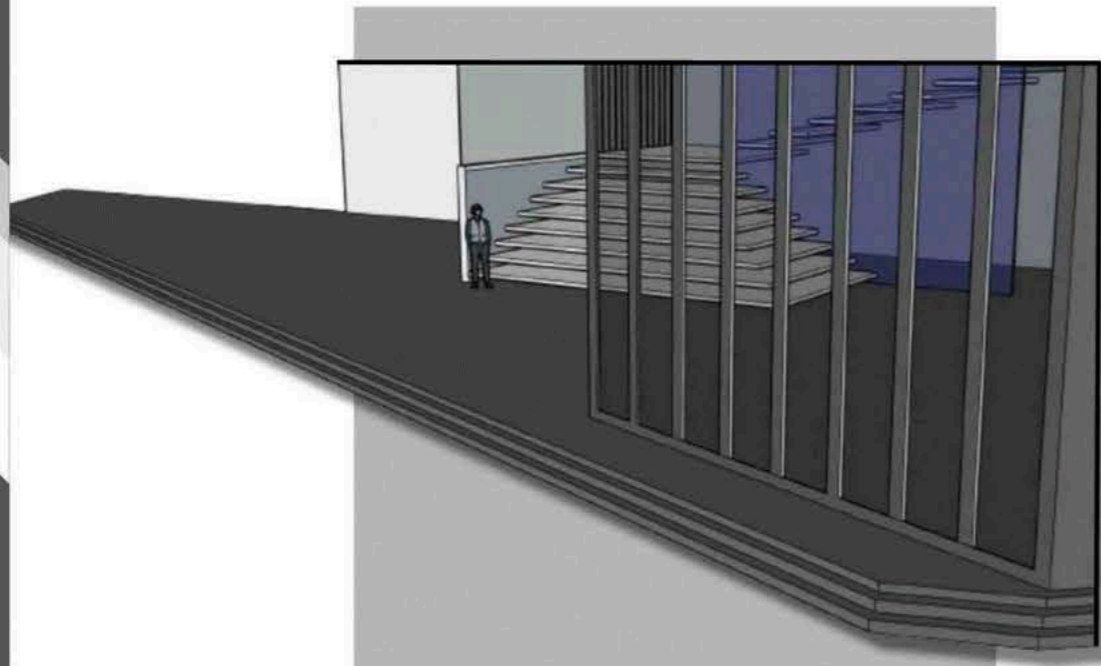


After trying out different design for my main entrance i've decided that I will choose the design with the double doors because, it looks much more exciting and less boring compared to the open space design

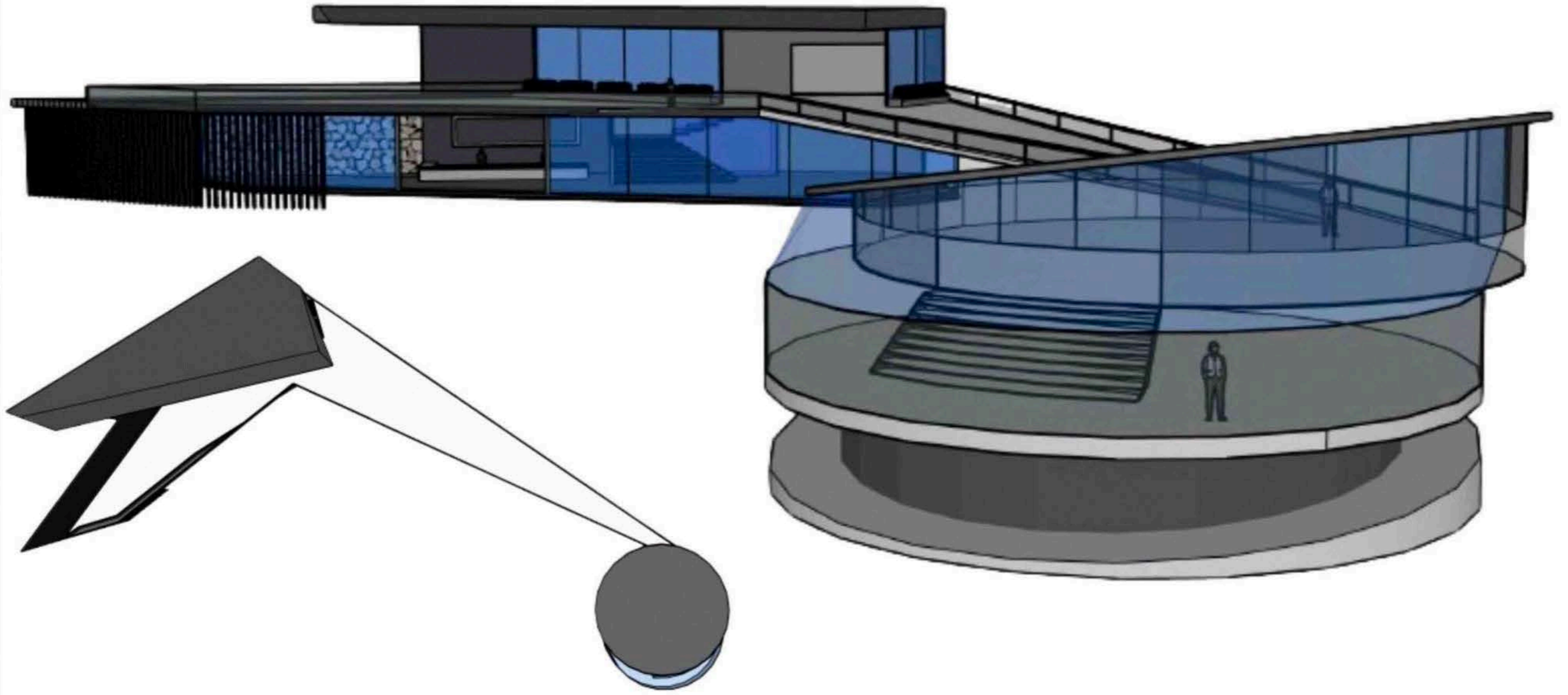


**MAIN
ENTRANCE**

**E
N
T
R
A
N
C
E**



FINAL DESIGN



ACE MOTORSPORT

Where families, friends, and future racers come to make memories, one lap at a time



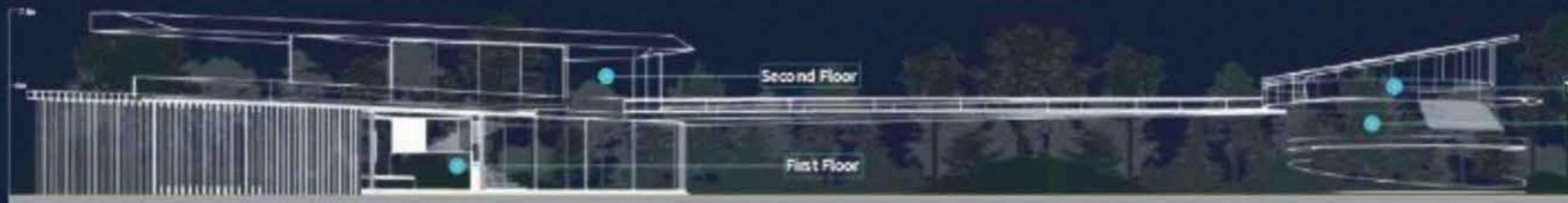
Interior View



Exterior View

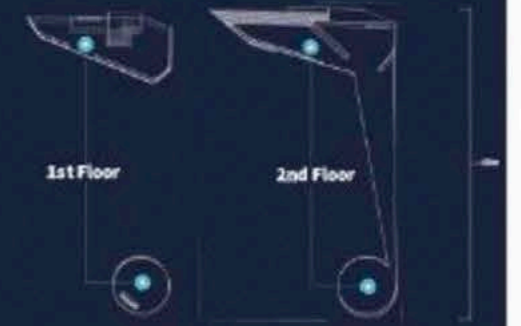


Viewing Platform



Main Building

Viewing Platform



Sample Merit exemplar

Subject: Design and Visual Communication

Standard: 91627

Total score: M6

Grade score	Commentary
M6	<p>The visual elements of a fighter plane are explored and regenerated through sketches and cardboard-modelled starting ideas, leading to functional initial design ideas. Further exploration of functional details (such as the screens and steps) tie back to the starting ideas, while enhancing the purpose of the design in relation to its design context.</p> <p>There is not sufficient extending of the design to reach an E7, even though the development of materials and rendering may have refined the communication of the design.</p>