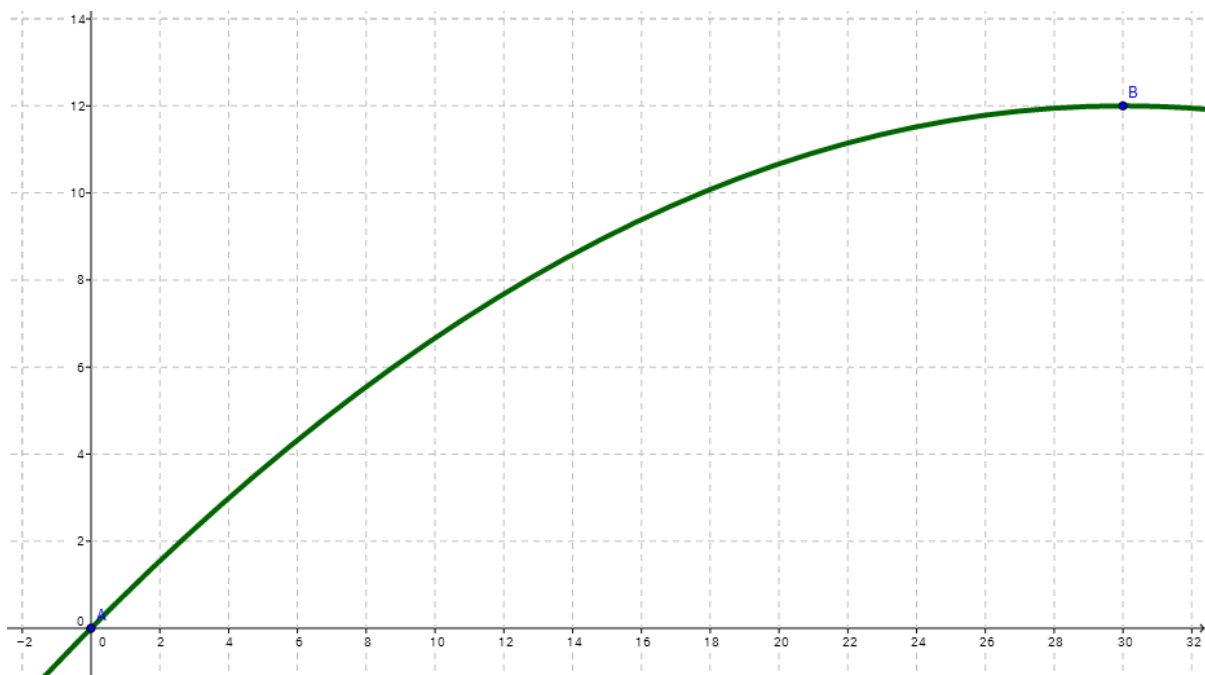


Student 6: High Not Achieved  
NZQA Intended for teacher use only



I drew a quadratic on geogebra which went through  $(0,0)$  and  $(30,12)$

Here is a screenshot of my function.

We only need the bit of the graph from  $x = 0$  to  $30$  for the first half of the bridge.

The quadratic works because it has a vertex of  $12$  when  $x = 30$ , which is the top of the bridge.

If I continued it it would go through  $(60,0)$  because it is symmetrical about the vertex.

1