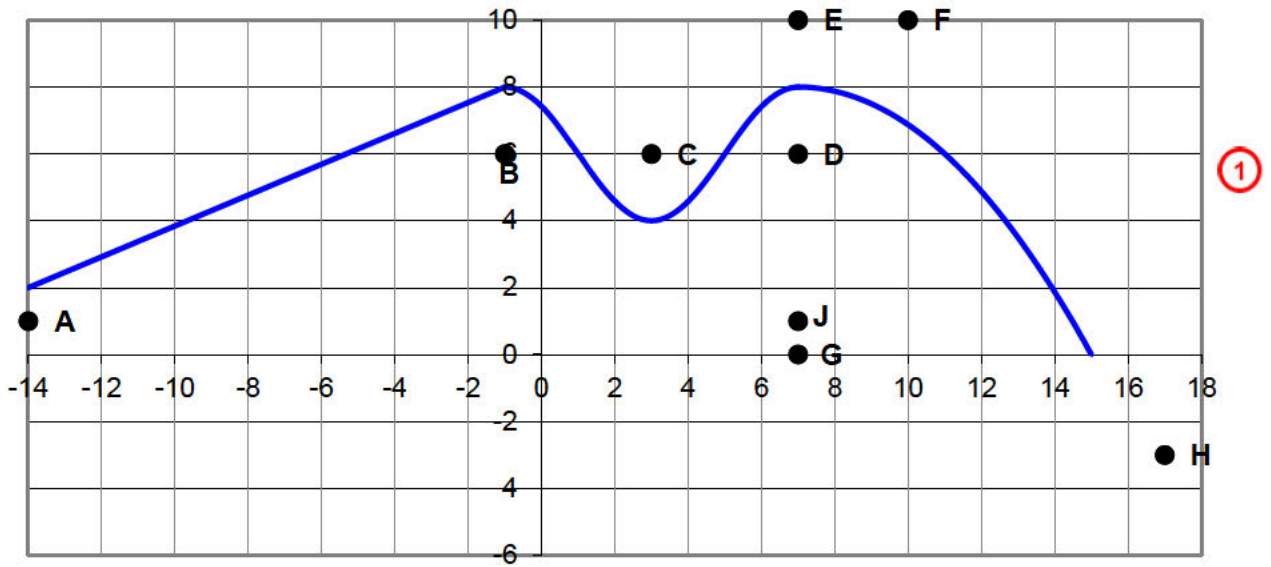


Student 5: Low Achieved
NZQA Intended for teacher use only



Section 1 $y - y' = m(x - x')$
 $8 - 2 = m(-1 - -14)$
 $6 = m \times 13$
 $6/13 = m$

Section 2 $y = 2\sin(x - 5) + 6$

Section 3 parabola with vertex (7,8) $y = (x - 7)^2 + 8$

2

3