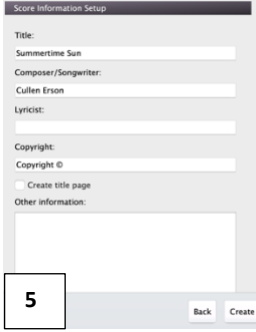
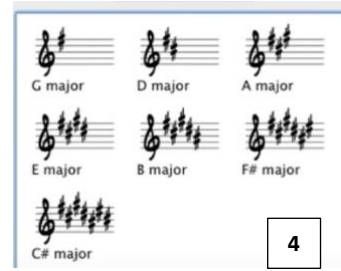
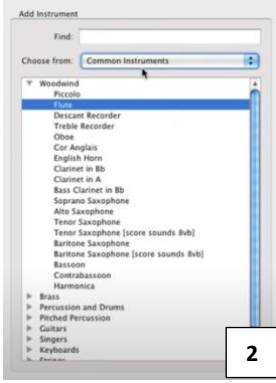
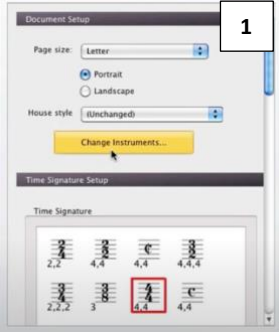


Sibelius Internal – Summertime Sun



To input any notes or rests, I used the keyboard function in Sibelius. With this I was able to highlight notes or even bars and repeat them, sometimes changing the notes slightly so that I didn't have to input every single individual note. The composer and title were added when setting up the score. To insert the staves with instrument markings, time signature and key signature, I did this in the setting up process of the score as shown above.

To include the boxed text that says intro, I had to click on text, styles and then boxed text. The setting up of the crotchet bpm was done in the initial setting up process. The dynamic mark of forte was added by using a command E function and then right clicking on the text line that appears. The accent was added when the note was added onto the score on the Sibelius keypad.

The tie was added when adding the notes onto the score by the Sibelius keyboard. Chords were used a lot in this particular score and an easy way to add the notes above the root note in the chord is just to highlight just the base of the crotchet and then click the number of which the next note in the chord is.

The 'palm mute' text was added by clicking command E and then typing in the given word. This was required a significant amount throughout the score. The repeat bar was added by highlighting the start of the bar, then clicking on 'notations', then selecting bar line and finally clicking on the repeat function.

In this section of the score, text, dynamics and boxed text were used. To apply these the same procedure was taken. The first time bar was added by selecting the start of the bar and then one note before the end of the line and then 'notations' was selected. Using the drop down section, a first time bar line was added.

A second time bar was required to be added in this section. The same process was followed when doing a second time bar compared to the previous first time bar. A Del Segno (D.S) was added in bar 21. To do this, I clicked Z on my keyboard and selected the D.S sign. To add the text in bar 21, control E was used.

A 'To Coda' and the coda symbol was added at the end of bar 28. To do this, I first clicked Z to add the Coda symbol and following this I clicked text and then styles and finally the 'To Coda' option.

The staccato marking was added by using the keypad function. The 'D.S al Coda' was added clicking text and then styles and then that specific function for all D.S or Coda markings. It is a different font compared to other written markings.

The final Coda marking was added by clicking notations and then Coda. The coda section has been indented into the score slightly to show it is a variation last time bar.

An anacrusis was present in the score so to add this at the end I clicked 'Shift, alt, M' to add an irregular bar worth one minim.