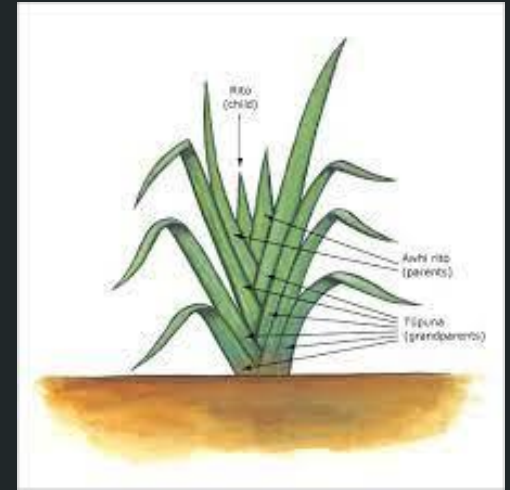


# AS 92065

## Te Mahi Piupiu



Te whakamahi whakaaro tau whaitake hei whakaoti rapanga

## Te horopaki:

I tēnei ngohe, ko taku mahi he tātaitai i ngā hanga pāngarau mō te hokohoko piupiu hou mō tētahi kapa wharekura e whakarite ana ki te tū ki tētahi whakataetae kapa haka ā tērā mārama. Ka mutu, ka tūhura koe i ngā āhuatanga me ngā tikanga o te mahi piupiu. E hiahia ana te kura ki te hoko piupiu hou mō te kapa wharekura ka tū ki tētahi whakataetae kapa haka ā tērā mārama. 40 katoa ngā ākonga kei roto i te kapa wharekura, ā, me mau i ia kaihaka tētahi piupiu. He rerekē te roa o ngā piupiu mō ngā tama i ngā piupiu mō ngā kōtiro. Ka tū te whakataetae kapa haka ā tērā mārama, nā reira, me tae mai ngā piupiu hou i mua i te rā tū.

Ko te 2:3 te ōwehenga o ngā tama ki ngā kōtiro i roto i tēnei kapa.

## **Anei ngā utu mō te hoko piupiu:**

Piupiu kōtiro - 80 henemita te roa

Piupiu tama - 35 henemita te roa

E \$85 te utu mō ia 10 henemita ka tāpiri ai i te taketake hokohoko (GST) 15%.

Hei tā te whakapae a te pakihi mahi piupiu, ka 10 rā te roa kia oti i ngā kaimahi tokowhitu te whakarite me te whiri i te harakeke mō ngā piupiu roroa 15 me ngā piupiu poto 10.

Kia oti te whiri te katoa, he rua wiki anō kia mau i te piupiu tōna tae, kia oti anō te horoi me te whakamaroke i mua i te tuku ki te kura.

I mua i te tīmatanga o te mahi piupiu, me utu te 0.35 o te utu katoa hei moni tāpui (down-payment).

# Karakia kia Tāne Mahuta & Hineteiwaiwa:



①

Tēnei matou e īnoi atu ki a koe e Tāne Mahuta  
Ki a koe Hineteiwaiwa  
Nāu ēnei rawa kua poipoia  
Nāu ēnei hua kua whakatipu  
Tēnei au e īnoi atu kia tūwhera mai te whare pora  
Me ngā mātauranga o roto  
Tīhei mauri ora

*Ko te tikanga ia ka whakataki i te karakia ā mua, ā muri hoki i te tūwhera i te whare pora, kia whakakapi hoki i te tapu o te pā harakeke. He āhuatanga tēnei e mana ai te pā harakeke me ōna tikanga. He hirahira hoki tēnei mea te karakia ki te ao Māori.*

# Ngā tikanga Māori i roto i ngā mahi piupiu:

Ko tētahi o ngā **tikanga Māori** i roto i ngā mahi piupiu ko te tapu o te wahine. Mehemea kei a ia tōnā īkura, ka kore e whakaetia kia pātata atu ki te pā harakeke.

Me tūpato hoki te tapahi i te harakeke, mehemea kei te ua, kei te mākū rānei te pā harakeke. Kia tūpato koe i te wā e hauhake ana, e tapahi ana i ngā rau harakeke, kia kaua e tapahi i te rito, i ōna mātua ranei. Mehemea ka tapahi koe i te rito, ka mate haere te pā harakeke. Ka kore e tipu pai, ora pai te harakeke. He tapu hoki te wahine mehemea kei a ia i tōnā mate wahine, te īkura. He tikanga Māori te karakia kia whakatūwhera i te whare pora, kia aukatia hoki. He āhuatanga tēnei o te tapu me whakanoa hoki i ngā tikanga o **Hineteiwaiwa**.



# Te momo harakeke ka whakamahia:

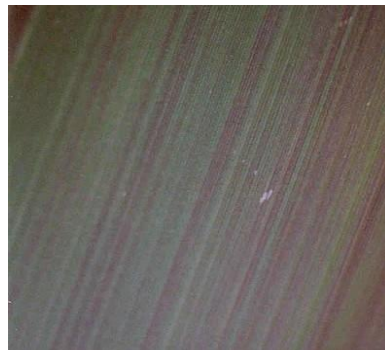
Ko te **ngaro** me te **awahou** ngā harakeke pai kia whakamahia i te wā e hauhake ana i te harakeke. He kounga rawa ēnei momo harakeke kia whakamahia, inarā i te wā e whakarite ana i te muka o te piupiu.



Te pā harakeke(Ngaro)



Ngā rau ngaro



Te rau ngaro



Te rau awahou

## Ngā tikanga kato i te rau:

Me karakia kia tūwhera ai i te wharepora. Me karakia anō hei te mutunga o ngā mahi hauhake harakeke, kia aukati i te wharepora. Kia kaua e tapahi i te harakeke i te wā e mākū ana, i te wā e ua ana rānei. Me tapahi i te harakeke ki tōna tuarā, ki te wāhi mārō. I ā koe e hauhake ana i te harakeke, me tītaha te tapahi, kia hauroki te kato i te rau, kia kaua e uru atu te wai ki roto i te harakeke, kia kaua hoki e pīrau haere te pā harakeke. Me tiākina i te rito me ōna mātua. Kia kaua rawa e tapahi i a rātou. Me tapahi kē i ngā kaumatua. He āhuetanga tēnei o te whakarauora i ngā tikanga o te hauhake harakeke. Rau atu ngā para o te harakeke ki te rāpihi whero, kia kaua rawa e whiu ki te pā harakeke, kei pīrau haere te pā harakeke.



## Ngā tikanga o te mahi piupiu:



He taonga tuku iho ngā āhutanga o te mahi piupiu. Tapahia mai te wāhanga mārō o te rau. Me tūpato kei hē tō tapahi. I a koe e hauhake ana i te harakeke, me āhua tītaha, kia hauroki te tapahi, kia kore ai te wai e uru atu i roto i te rau, ki kore ai hoki e para, e pīrau haere rānei. Mehemea ka tapahi ngā mātua, ka whara hoki te rito, ā, ka mate haere te pā harakeke. Kia koi ngā naihi, kia tūpato hoki, kei motumotu haere ngā rau. Whakaritea ngā rau kia rite mo te tapahi. Whakapapatia te rau harakeke ki runga i tētahi papa papatahi. Whakamahia i tō marepi kia mākahia ngā wāhi o te muka.



## Ngā tikanga o te mahi piupiu:

E ai ki ētahi, he pai te whakamahi i ngā angaanga o te kūtai kia hākukutia i ngā wāhanga o te muka. E taea hoki te whakamahi i ngā taputapu kē atu pēnei i ngā mētara, aha atu rānei. Mā te wā, ka pīngongo haere ngā rau, ā, kua mōhio koe kua rite mo te wāhanga whakatae. Ā mua i te whakatae i ngā piupiu, me rau atu ngā piu katoa ki roto i tētahi kōhua wai wera, kia ngāwari ake te piri o te waitae. Ki ētahi tāngata, ka whakamahia i te waitae o te taiao, arā ko te paru, rānei ka whakamahia i te waitae tāwhaiwhai, ngā waitae a te Pākeha. Me waihō te piupiu kia maroke whaimuri i te whakatae. Kia rua wiki te roanga o te wā whakamaroke.



## Ngā tikanga me ngā āhuatanga o te mahi muka:



Ka hāngai pū ngā mahi muka ki ngā mahi piupiu. He hirahira te whakamahi i ngā harakeke kounga rawa atu pēnei i te **awahou** me te **ngaro**. Kia whai hua pai ai te kounga o te piupiu, me te muka anō hoki. I ā koe whakarite ana i ngā harakeke, me tūpato koe, kei hauhake i te harakeke e kore i tino whai hua ai ō mahi raranga, muka rānei. Me whai hoki koe i ngā taputapu pai kia whakamahia hei rauemi mo te mahi muka. Ko ētahi ka whakamahia i ngā mākoi, ka whakamahi rānei i ngā taputapu mētara, ngā taputapu o ēnei rā.

I a koe e hākuku ana i te rau harakeke, me tūpato, kei hākukutia kaha rawa, ā, ka moumou.

# Te whai i te pūtea hei moni tāpui - Te kore tāpiri 15%GST

## Piupiu kōtiro:

$$\$85 \times 8 = \$680$$

$$80\text{cm} = \$680$$

$$\$680 \times 24 = \$16,320$$

$$= \$16,320$$

## Piupiu tama:

$$\$85 \times 3.5 = \$297.5$$

$$35\text{cm} = \$297.5$$

$$\$297.5 \times 16 = \$4,760$$

$$= \$4,760$$

## Te tango 15%GST:

$$\$16,320 + \$4,760 = \$21,080$$

$$\$21,080 - 0.35 = \$7,378$$

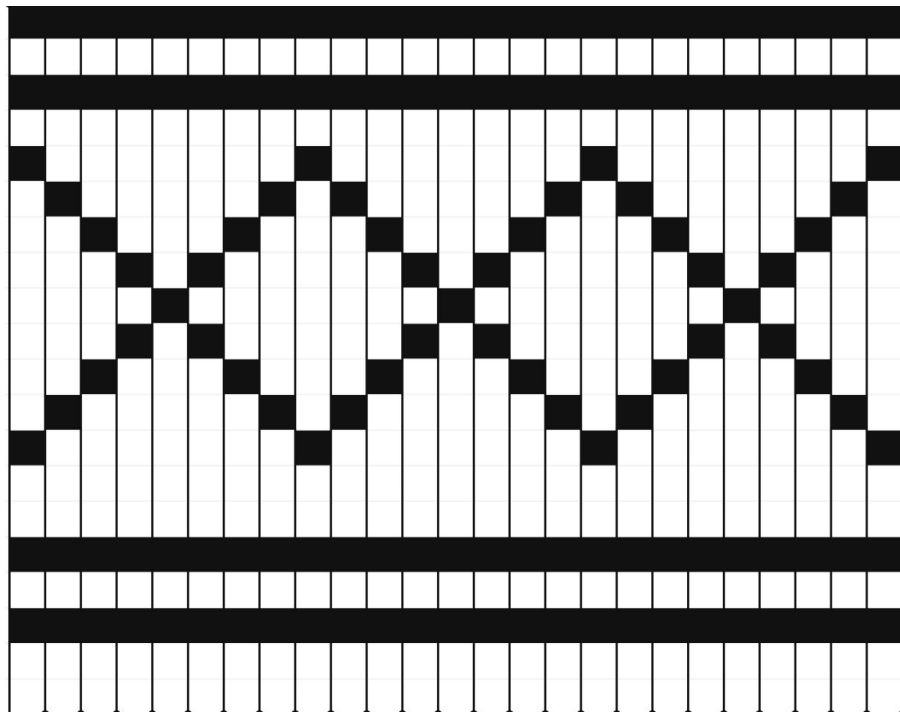
# Ngā āhuatanga pāngarau - Te tāpiri GST

<b>GST:</b>	<b>Piupiu kōtiro:</b>	<b>Piupiu tama:</b>	<b>Te katoa:</b>
15% o te \$85	\$97.75 x 8	\$97.75 x 3.5	\$18,768.00 + \$5,473.92
= \$12.75	= \$782	= \$342.12	= \$24,241.92
\$85 + \$12.75	\$782 x 24	\$342.12 x 16	Te utu o te katoa
= \$97.75	= \$18,768.00	= \$5,473.92	= \$24,241.92
10cm = <b>\$97.75</b>	Te utu o ngā piupiu kōtiro = \$18,768.00	Te utu o ngā piupiu tama = \$5,473.92	\$24,241.92 x 0.35 = \$8,484.67

Te rahi o te pūtea hei moni tāpui

**= \$8,484.67**

# Hei Taurira:



## Ngā inenga o te taurira:

20 x 25 te nui

1 Pouaka = 4cmx4cm

## Ngā inenga tika:

1cm = 1 pouaka



25 x 4 = 100 = Te whānui - 100cm



20 x 4 = 80 = Te roa - 80cm

