

Merit

NZQA Intended for teacher use only



# WHAT WAS THE IMPACT OF THE HAWKES BAY 1931 EARTHQUAKE?

## PRIMARY SOURCE 1

### *About Source and how it is relevant to the Focus Question:*

This photograph shows some of Napier before the 1931 earthquake. In the photo we can see lots of buildings such as Napier Technical College which came down in the earthquake killing 10 people, Methodist Free Church and Carlyle Street School. The photographer is unknown but was probably taken from May Avenue area.

This source is relevant to my focusing question (what was the impact of the Hawkes bay earthquake) because the photo shows what Napier looked like before the earthquake hit Hawkes bay.

### *Discussing Strengths and Weakness:*

Some strengths of this source are that it is reliable because it shows what Napier looked like before the 1931 earthquake. Because the source is a photo, I do not get any facts from it, but I did get some from the photo description which states facts about what happened, the source does not use propaganda and is not biased. Some weaknesses of the source are that it is only one part of Napier, so we do not know what the rest of Hawkes bay looked like. There was very few pictures of Hawkes bay before the earthquake, I also do not know when the photo was taken (all we know is that the photo was taken before the earthquake in 1931) I also do not know who took the photo.



Date accessed 13/4/2022

Unknown. (24th, July 2020). *Napier Before 1931 Earthquake*. National Library of New Zealand. <https://digitalnz.org/records/44008839/napierbefore-1931-earthquake>

## PRIMARY SOURCE 2

### About Source and how it is relevant to the Focus Question:

This photograph shows a tractor removing the remains of the nurse's home in Napier after the 1931 earthquake. The photo was taken by Arthur Bendigo Hurst, a photographer who lived in Napier at the time. This source is relevant to my focus question (What was the impact of the Hawkes Bay 1931 earthquake?) because eight off-duty nurses and three office staff died in the nurse's home, and six were severely injured when the building collapsed. This would have impacted the friends and family of the people who died, and the hospital would have been understaffed when they needed all the help they could get.



### Discussing Strengths and Weakness:

Some strengths of this primary source are that it is reliable because it shows us some of what happened in Hawkes Bay after the 1931 Earthquake. The source itself does not use facts, but the description of the photos tells us facts about what is happening in the photo, also the source does not use propaganda and is not biased.

Some weaknesses of the source are that the picture was taken at a particular place in Napier, so we do not know what the rest of Hawkes Bay looks like, but it does give us a rough idea of what happened. We also do not know the exact date the photo was taken (whether it was straight after or a week later.)

Date accessed 18/3/2022

Nurses Home, Napier Hospital after the 3 February 1931 earthquake. (n.d.). MTG Hawkes Bay. <https://collection.mtghawkesbay.com/objects/92891/nurses-home-napier-hospital-after-the-3-february-1931-earthquake>

## Primary source 3

### About Source and how it is relevant to the Focus Question:

This letter source shows a letter written by Author to Bird, Dorry and Billy about Author's experience during the earthquake. Author was a radio operator on a navy ship called 'Taranaki' which was just off the Napier shore when the earthquake hit Hawkes Bay on the 3rd of February 1931.

This source is relevant to my focus question (what was the impact of the Hawkes Bay earthquake) because Author is telling us about his experience of the earthquake and how he was impacted by the earthquake.

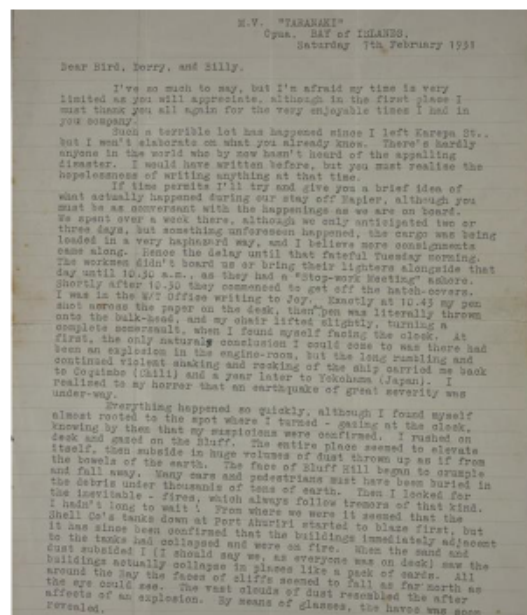
### Discussing Strengths and Weakness:

Some strengths of this letter are that it does not use propaganda and it uses facts about what happened during the earthquake in Napier. We know that these facts are reliable because the letter's writer, Arthur, was in Napier when the earthquake hit Napier.

Some weaknesses of this letter are that it only shows one person's perspective of the earthquake, so we do not know what other people went through during the earthquake.

Date accessed 20/3/2020

Arthur. (1931, February 7th). Letter from 'Arthur' describing the 1931 Napier earthquake. National Library of New Zealand. <https://natlib.govt.nz/records/30634067>



## Primary source 4

*About Source and how it is relevant to the Focus Question:*

This source shows a newspaper article published by the daily telegraph and H.B herald on the 4th of February 1931 the day after the earthquake hit Hawkes Bay. The article tells us about how the earthquake impacted people by writing about the many fatalities and the latest death roll. This relates to my focusing question (what was the impact of the Hawkes Bay earthquake) because it tells us about how people were impacted by the fires and many fatalities which happened during and after the earthquake.

*Discussing Strengths and Weakness:*

Some strengths of this news paper article are that it does not use propaganda, but it does use facts about the many fatalities that accorded and the deaths from the earthquake. Another strength of this news paper article is a reliable source because it provides an article about the earthquake that uses strong evidence. Some weaknesses of this news paper article are that news papers can be biased and be based on one particular point of view.

Date accessed 2/4/2022

corban, A. (n.d.). Earthquake learning to kiwi. Learning to kiwi.  
<https://learningtokiwi.wordpress.com/tag/earthquake/>



## PRIMARY SOURCE 5

*About Source and how it is relevant to the Focus Question:*

This photograph taken in the year 2020 by Christina McRae shows a building called The Daily Telegraph, which is apart of the art deco buildings in Napier today. The building was built in 1933 by Fletcher Construction Company and was designed by architect EA Williams in art deco style. This is relatable to my focus question (What was the impact of the Hawkes Bay 1931 earthquake?) because in the 1960s Art deco style buildings were fashionable so when Napier was rebuilt one of the most popular styles was art deco. therefore, if the earthquake didn't happen then Napier would not have as many art deco buildings and would not be the art deco capital.

*Discussing Strengths and Weakness:*

Some strengths of this primary source are that it is not biased, and it does not use propaganda, and it is reliable because it is a photograph that shows an Art Deco building in Napier. The source itself does not use facts, but the descriptions of the photo do use facts to tell people about the photo.

Some weaknesses of the source are that we can only see one building in Napier today, so we do not know how the rest of Hawkes Bay was impacted, but it does give us a rough idea of what happened. We also do not know exactly when Christina McRae took the photograph.



Date accessed 2/5/2022  
 Daily Telegraph Building Napier 2020. (n.d.).  
[https://knowledgebank.org.nz/still\\_image/daily-telegraph-building-napier-2020/](https://knowledgebank.org.nz/still_image/daily-telegraph-building-napier-2020/)

<b>Ideas specific to Source 1 only...</b> what buildings and roads looked like before Napier was hit by the earthquake in 1961.	<b>Common ideas between one or more sources...</b>
<b>Ideas specific to Source 2 only...</b> the damage the earthquake had on the buildings and roads of Napier and how that affected people.	<b>Sources 3 &amp; 4</b> both written pieces about people's experience of the earthquake. <b>Sources 4 &amp; 2</b> are both about fatalities that occurred after the quake hit. <b>Sources 2, 3 &amp; 4</b> common ideas are that they all tell us about what happened in the earthquake and how people were affected by the earthquake.
<b>Ideas specific to Source 3 only...</b> Author's experience of the earthquake and how he was impacted by the earthquake.	<b>Sources 1, 5 &amp; 2</b> have common ideas because they are all photos of roads and buildings in Napier.
<b>Ideas specific to Source 4 only...</b> How people were impacted by the fires and many fatalities which happened during and after the earthquake.	
<b>Ideas specific to Source 5 only...</b> how the earthquake affected what Napier looks like today	

### Source comparison

Source 3 & 4 are both written pieces about what happened in the earthquake one is a letter that Author wrote to his family about what he went through in the earthquake, and the other is a newspaper article about what happened after the quake hit. Sources 1, 5 & 2 are all photos of buildings in Napier, source 1 is a photograph showing what Napier looked like before the earthquake hit. Source 2 shows some of the damage the earthquake did to Hawkes Bay, and source 5 is a photo of Napier today and how the earthquake impacted what Napier looks like today.

#### Most useful source to helping answer my Focus Question

All of my sources are helpful when answering my focusing question (What was the impact of the Hawkes Bay 1931 earthquake?). But the most useful one would have to be source four because it gives the most information about what happened after the earthquake and how it impacted Hawkes Bay. It tells us about the many fatalities that occurred after the quake. And it provides us with a list of the identified dead people as of the 4th of February 1931. It also has the most connections with source 3 and 2, the most strengths (does not use propaganda, but it does use facts about the many fatalities that occurred and the deaths from the earthquake.) and it has the least amount of weaknesses compared to the other source.