

No part of the candidate's evidence in this exemplar material may be presented in an external assessment for the purpose of gaining an NZQA qualification or award.



Mana Tohu Mātauranga o Aotearoa  
New Zealand Qualifications Authority

## **Review of Achievement Standards (RAS) Exemplar**

**Level 1 Design and Visual Communication**

**Achievement Standard 92002**

**Develop product or spatial design ideas informed by the  
consideration of people**

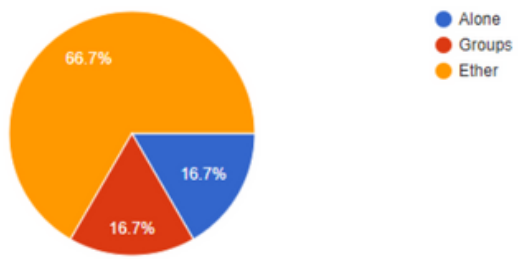
**Achievement**

**TOTAL 3**

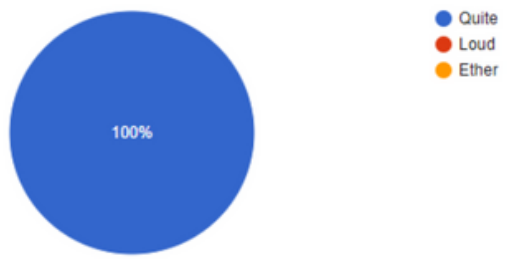
# PAGE ONE

UNFORTUNATELY I DID NOT GET MANY RESPONSES, BUT AT LEAST I GOT A SMALL IDEA OF WHAT PEOPLE WOULD WANT.

How do you preferer studying?  
6 responses

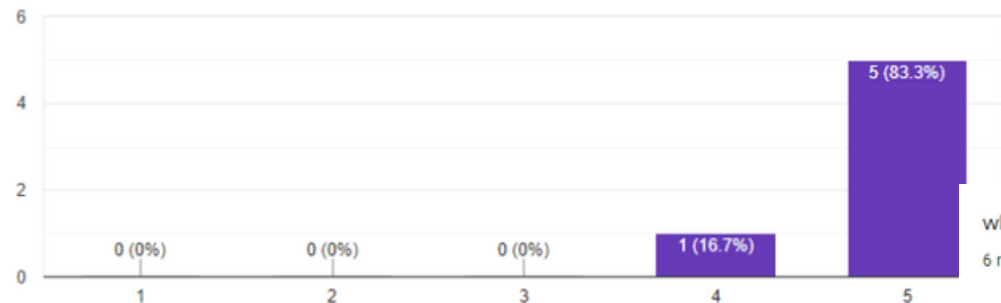


what studying environment do you like?  
6 responses

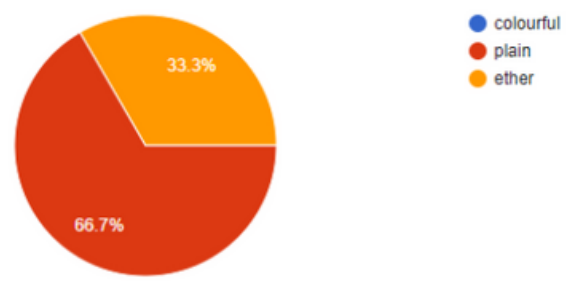


WITH THE RESPONSES THAT I GOT, I CAN SEE THAT A MIX OF GROUP STUDY ROOMS AND INDIVIDUAL STUDY ROOMS, WILL FIT WELL AS THE RESPONSES INDICATE THAT PEOPLE WOULDN'T MIND EITHER.

how important is comfort?  
6 responses

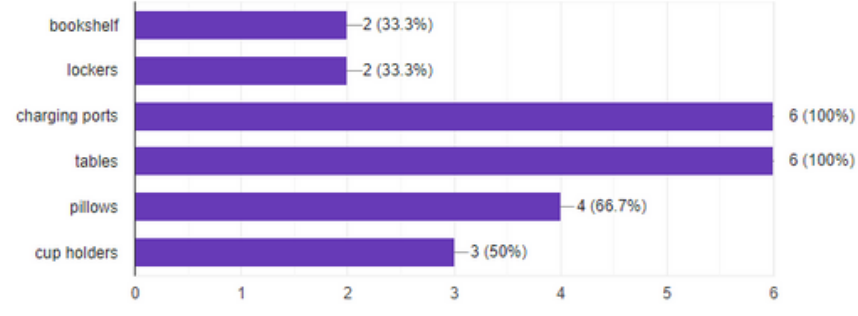


what studying environment do you like?  
6 responses

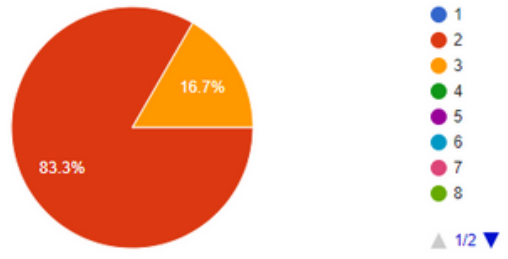


THESE TO GRAPHS SHOW THAT COMFORT IS A NEED WHILE STUDYING, AND COLOUR IS NOT A NEED WHEN IT COMES TO THE STUDY SPACE

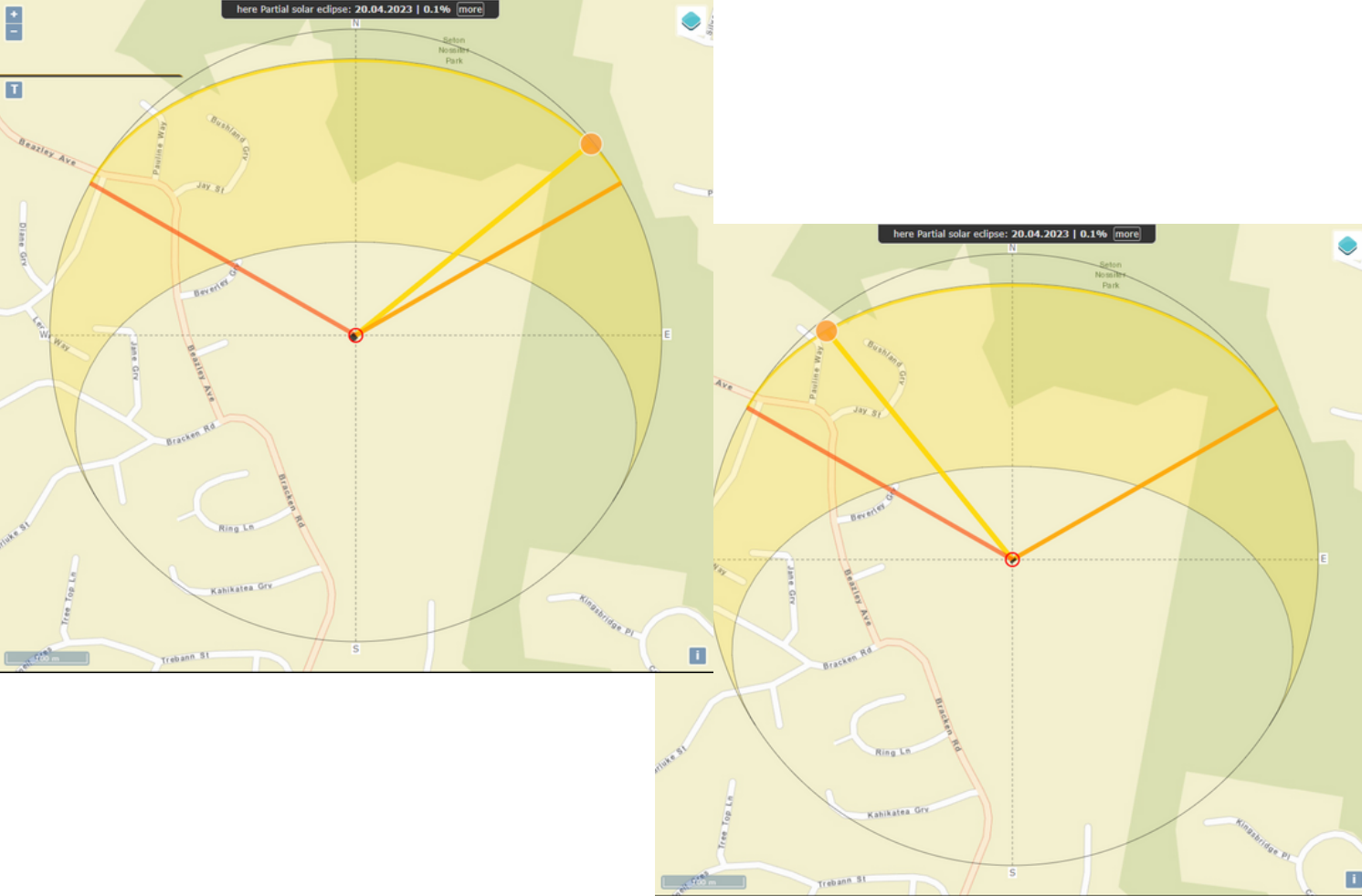
what would you like in the study space  
6 responses



how many floors in the study space  
6 responses

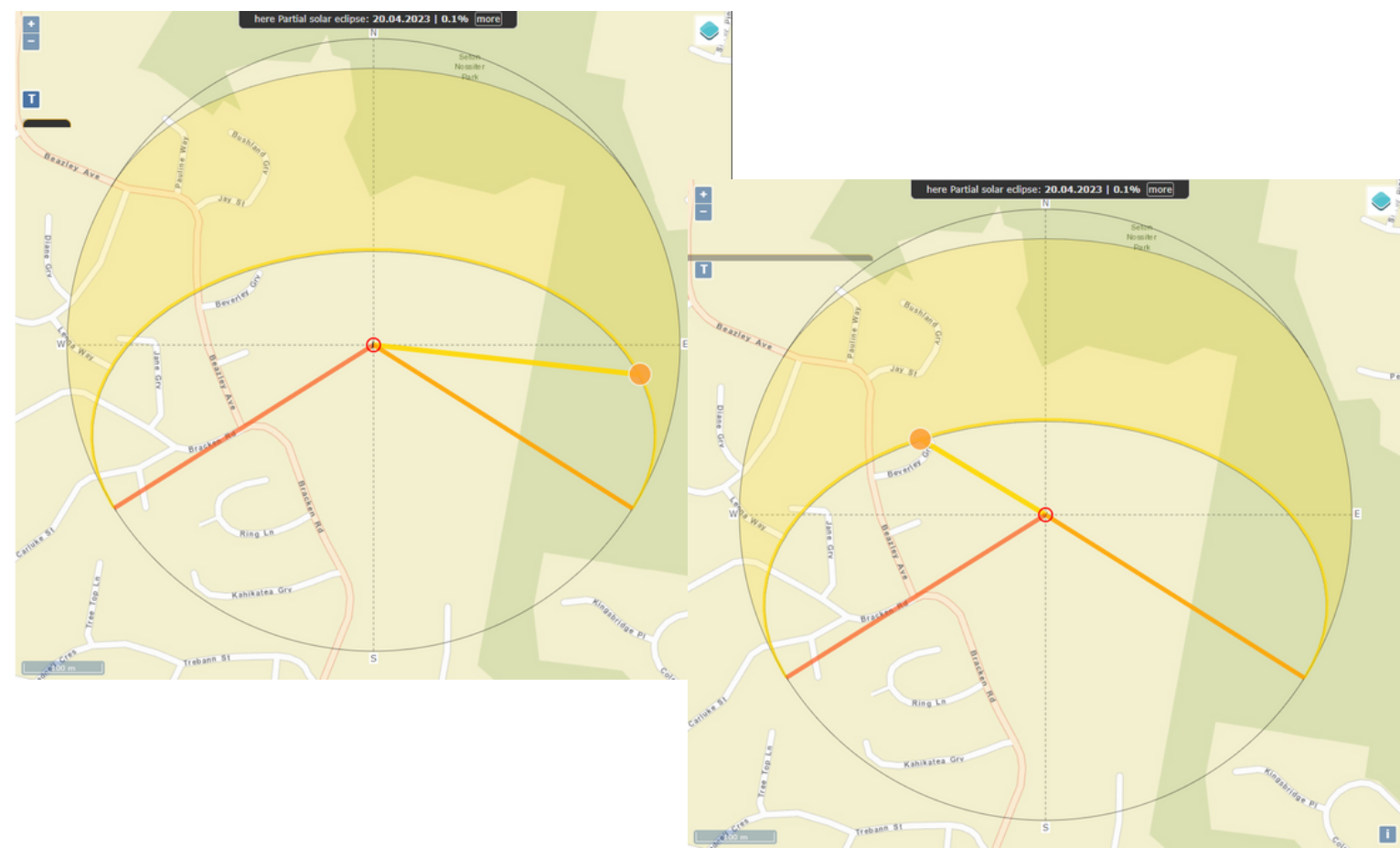


THE MOST NEEDED ITEMS IN THE STUDY SPACE ARE TABLES AND CHRAGING PORTS, AND PILLOWS WILL HELP WITH THE NEEDED COMFORT IN THE STUDY SPACE. MOST PEOPLE WOULD WANT 2 FLOORS IN THE STUD SPACE



In winter from 8:40-3:10 having the windows face north will make it so the study space gets the maximum amount of sun light

In summer, from 8:40-3:10 the sun is a little more to the east but at the very end of the day it passes north. So if I where to put windows, I would put some on the north side and most on the east side since it is sunnier in the summer.





This garden area is a good place for the study space because it is a quite area and is close to things like a block, gym, drama and the canteen.



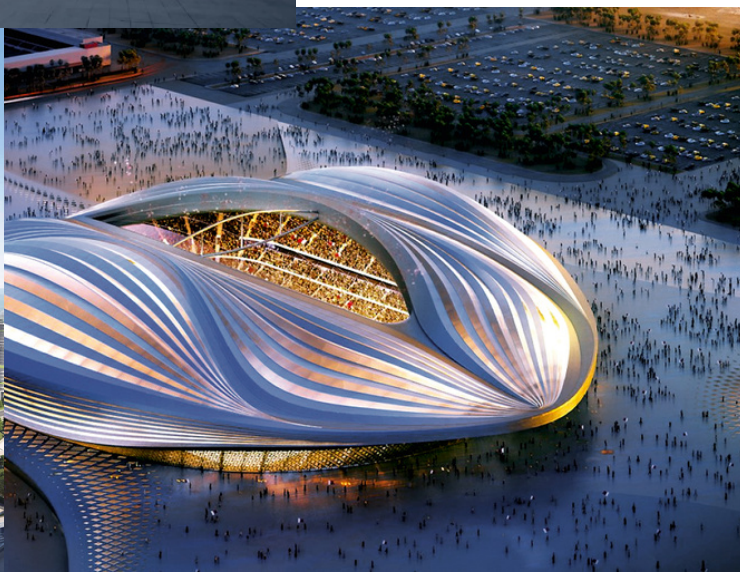
This is a good area for the study space because it is quite a sheltered area, might be a good place to go if its raining, although, it may not have a lot of sun since its so sheltered. It is also quite close to the canteen and I block as well as the gym and drama rooms.

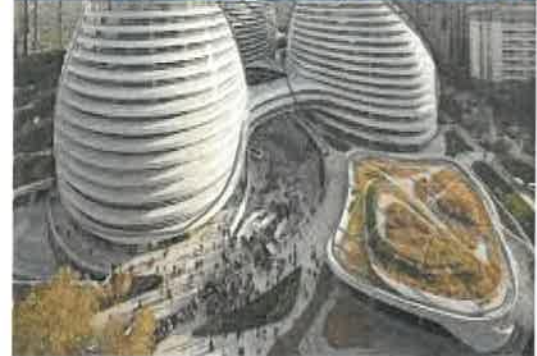
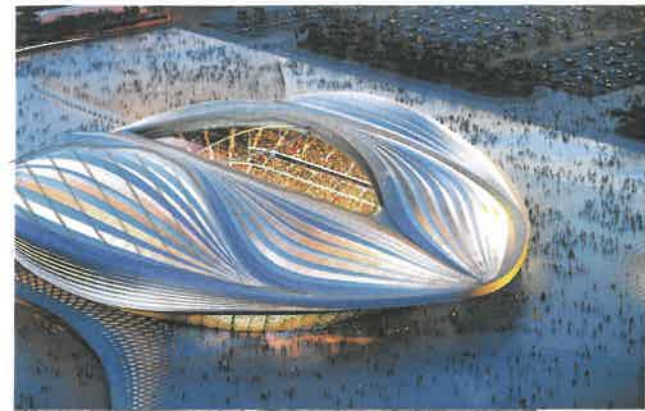
This area where the library was is a great spot for the study space as it is near the middle of the school so, its close to a and b block, and not to far away from anything.



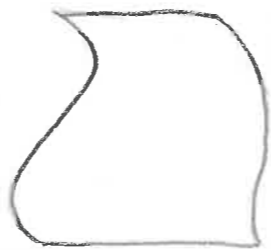
# LOCATION RESEARCH

Zaha Hadid has a very unique way of designing, her buildings consist of many curves and interesting shapes. I think getting inspiration from Zaha Hadid will be beneficial because it will make my design more interesting and people may use the study space more if I use inspiration from Zaha Hadid.

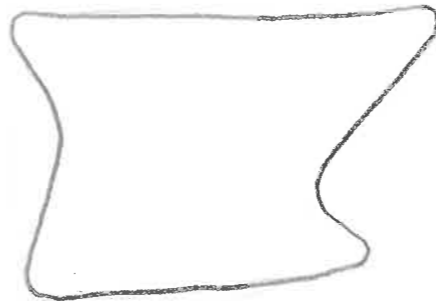




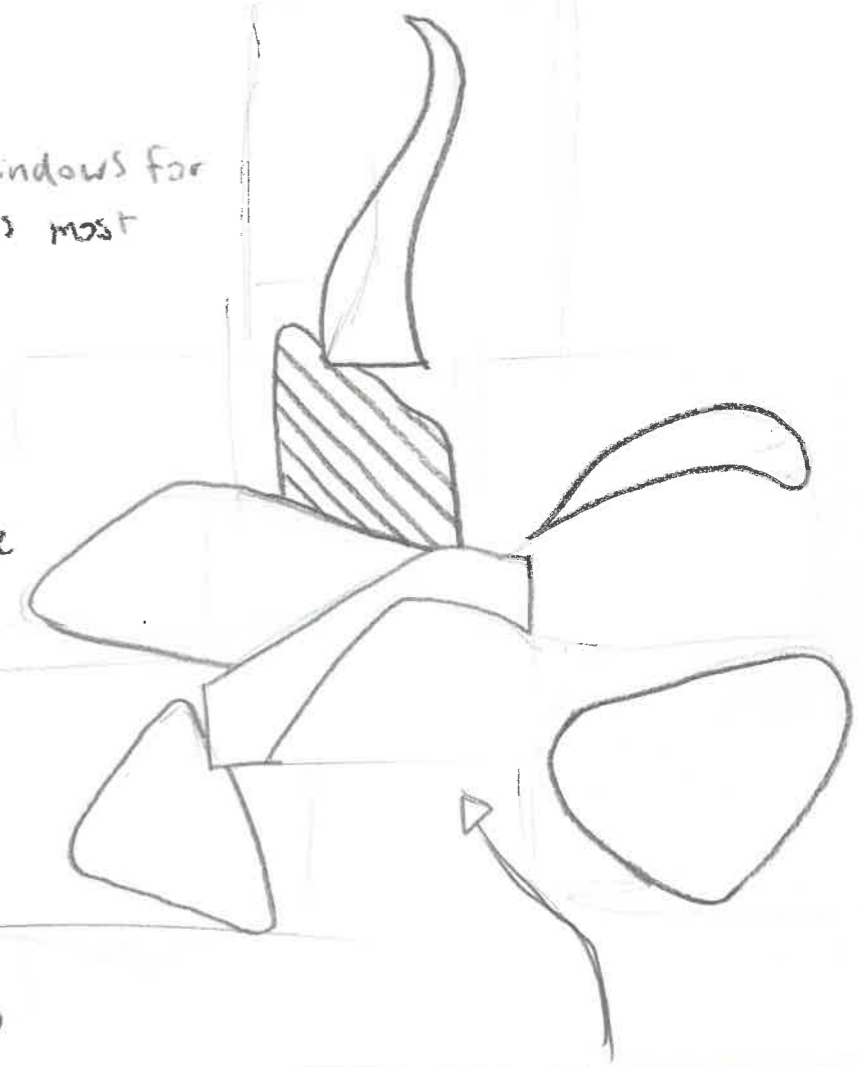
-For exterior Curvy door ways might look nice  
SA



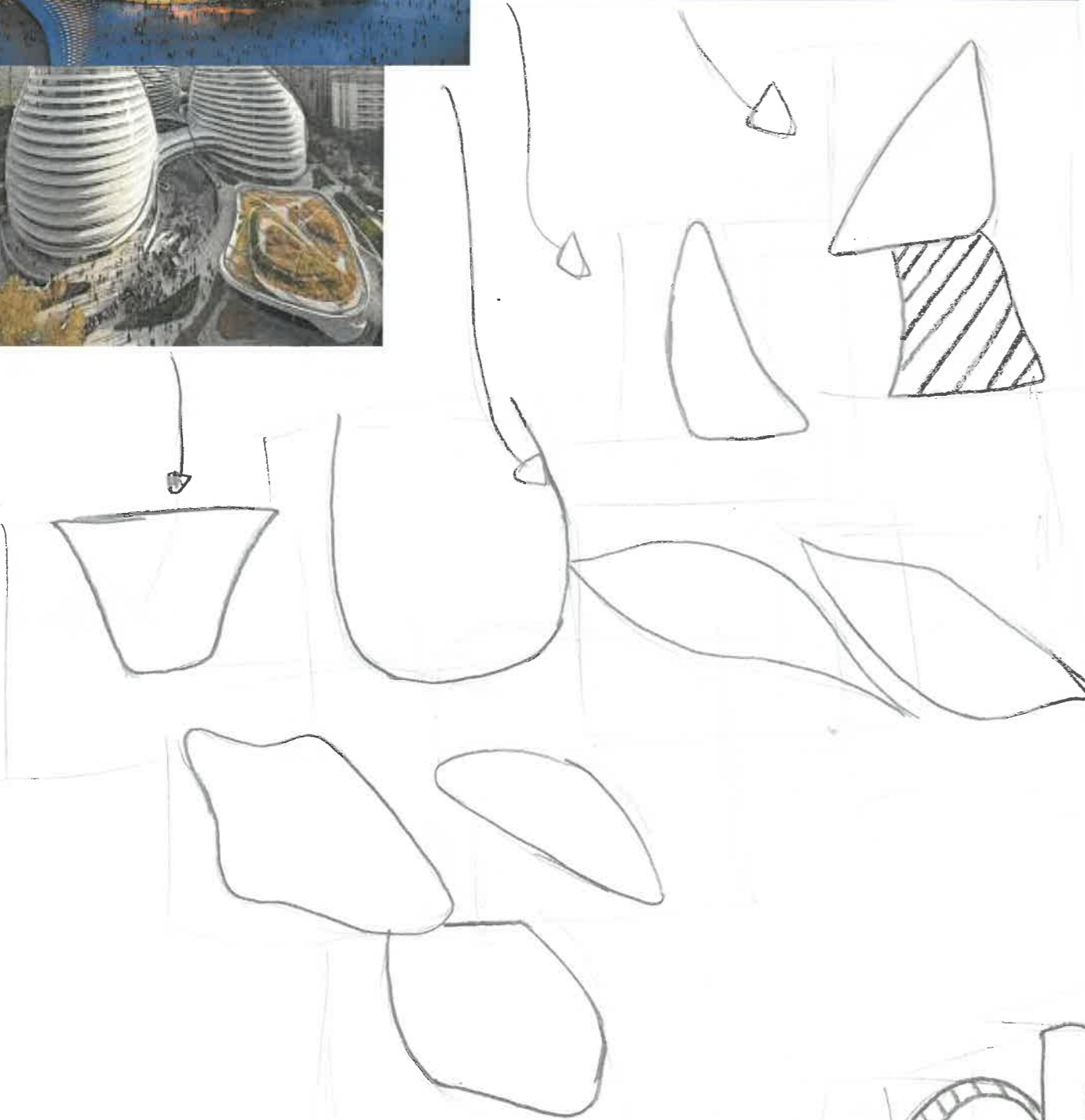
-More open windows for where the sun is most of the time



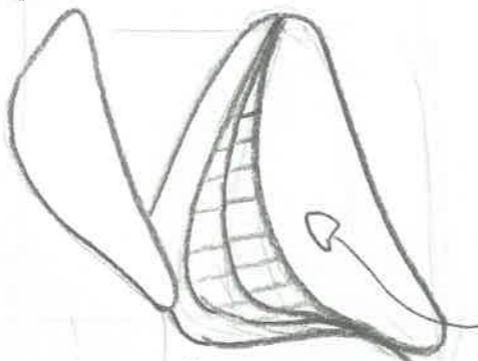
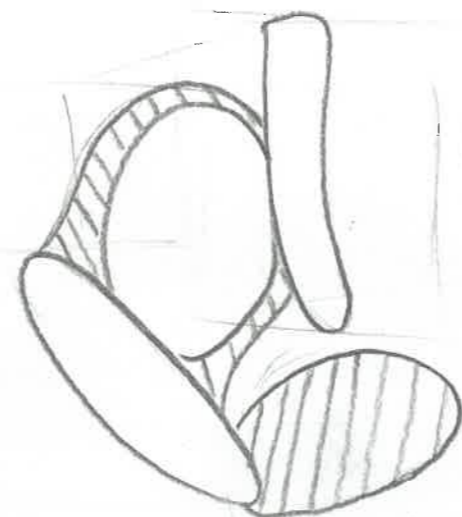
-A unique rain cover could have this shape



-Maybe some leaf shaped windows or texture on the ext



Texture for ext/  
Structure Support



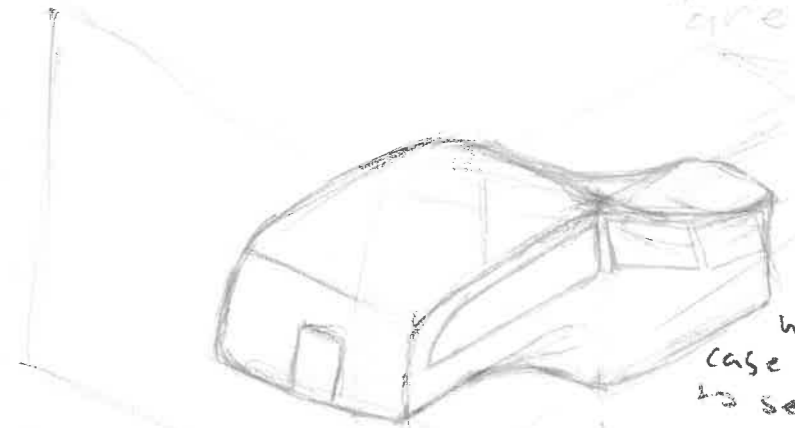
Zaha Hadid

**ENGAGE**



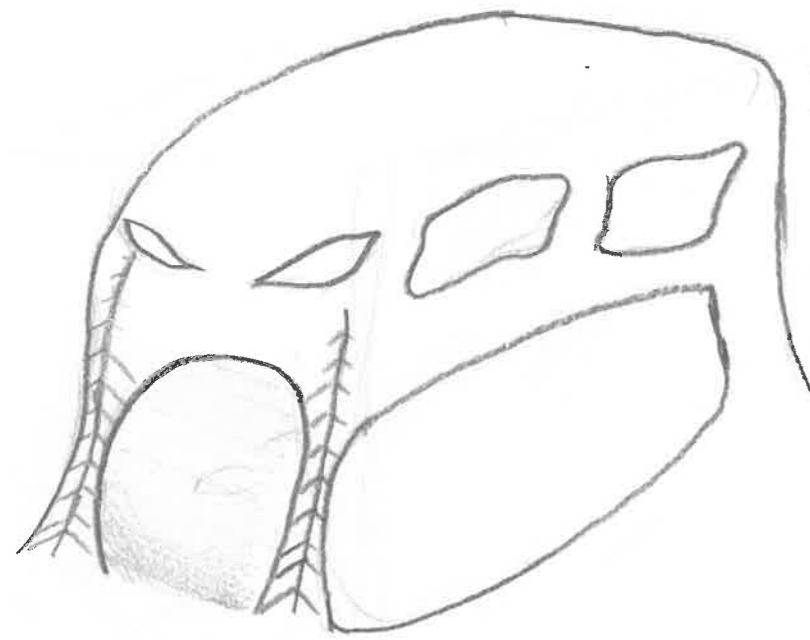
- Pros - had a cover from the rain

- Cons, It would be hard to keep the design within the restricted area

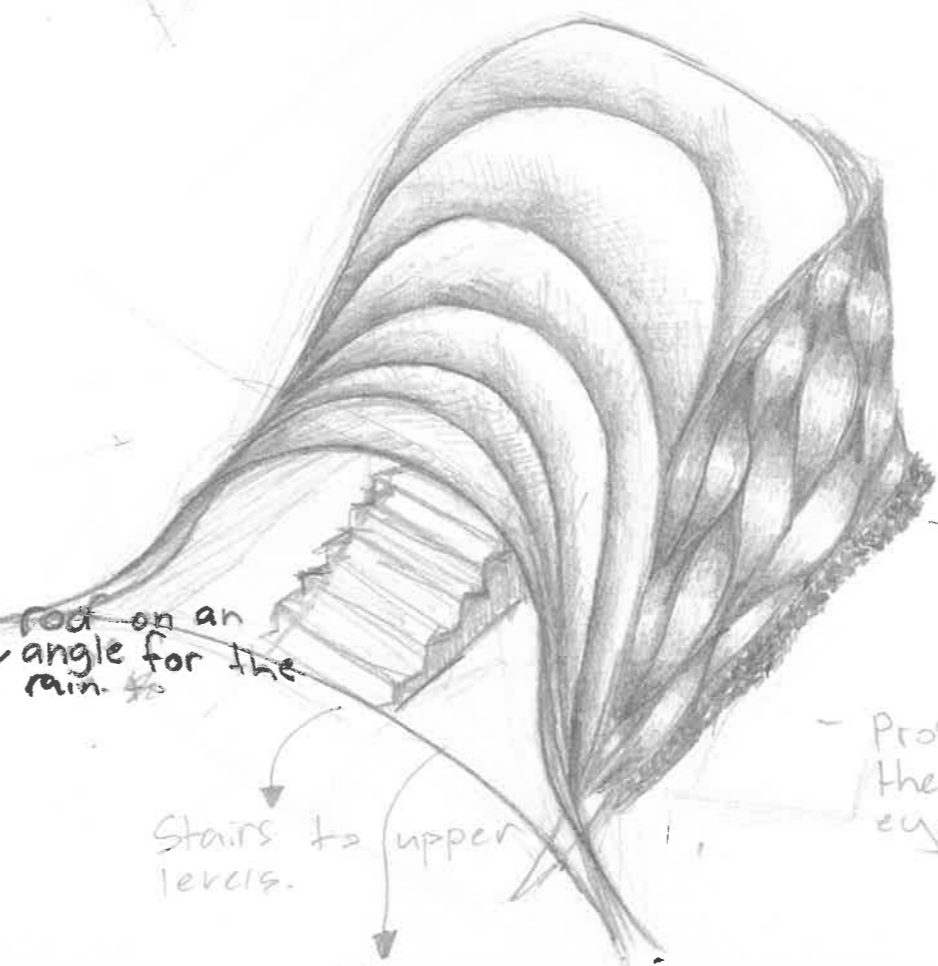


- lower level with stair case going up to second level

This second story would be connected to a building to hold it up



Cons - very open, Bad for rainy/windy weather



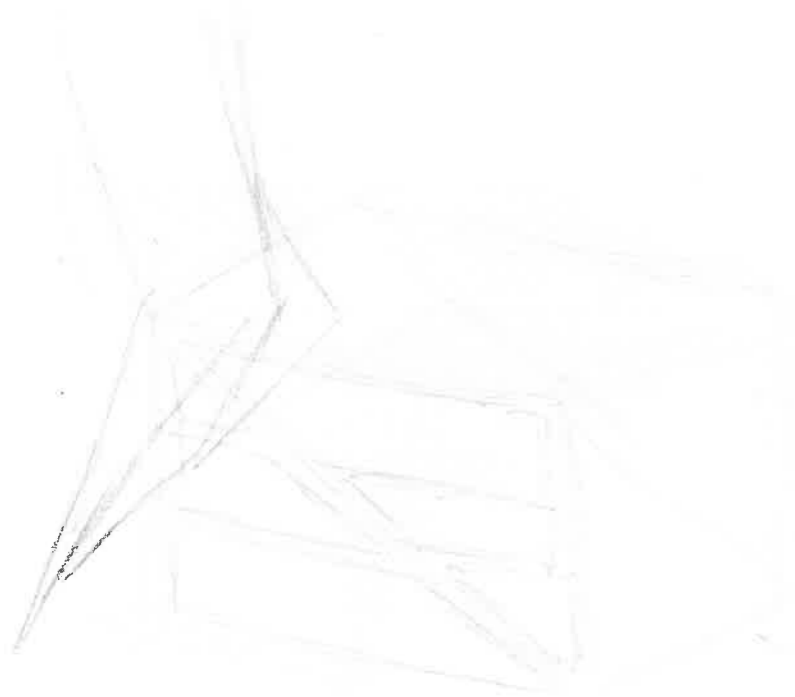
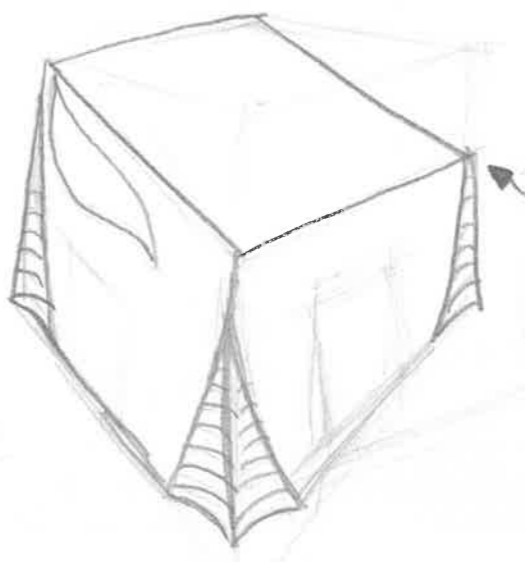
roof on an angle for the rain to

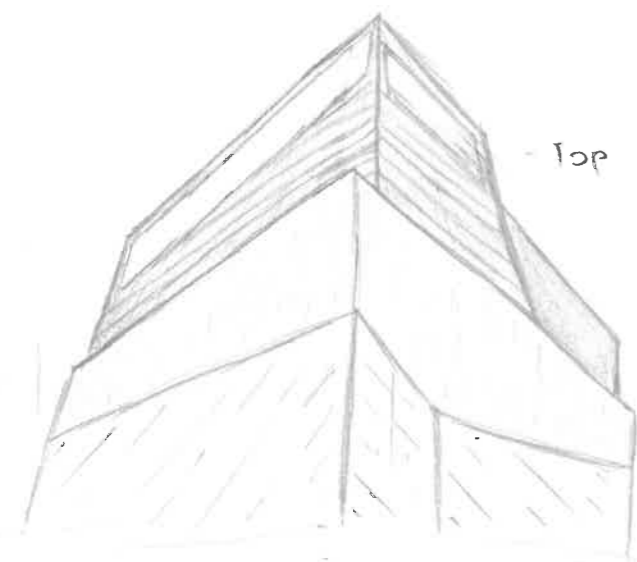
Stairs to upper levels.

Hallways to lower level

- Cons no windows, but can be easily implemented.

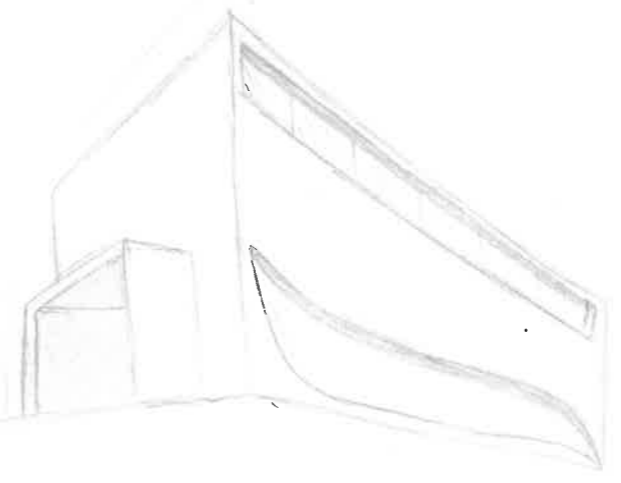
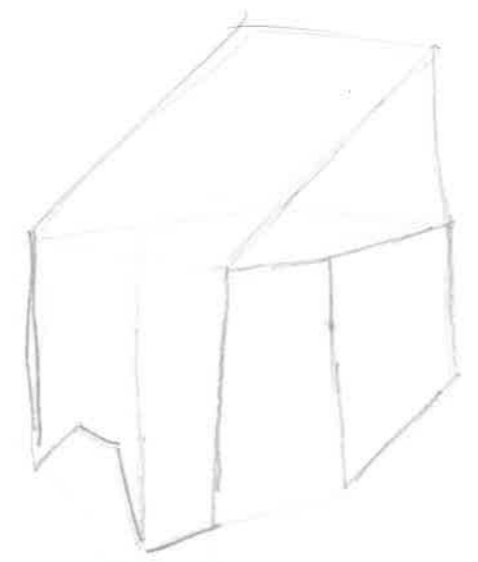
- Pros, has a great texture on the outside that will catch peoples eyes.



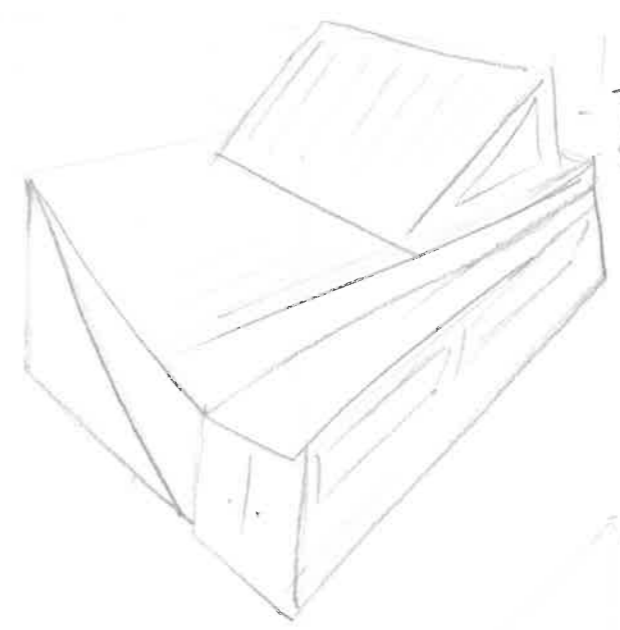


- Top floor is closed, study spaces

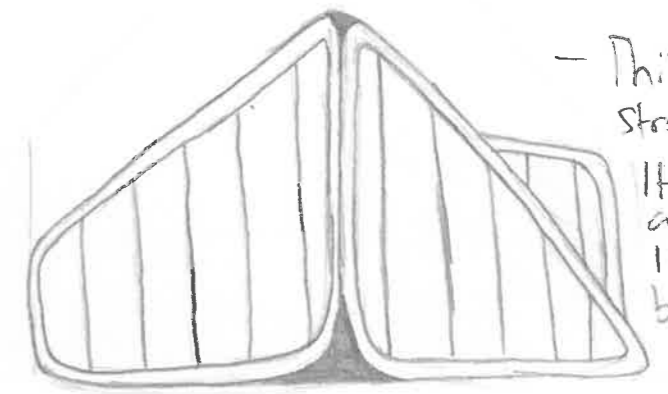
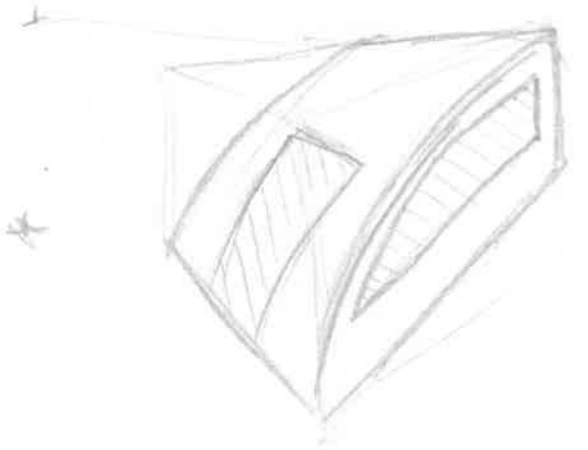
- Bottom floor is open space, glass doors and big glass windows for extra sunlight



- The middle section of the study space is open, and the edges consist of closed study spaces.

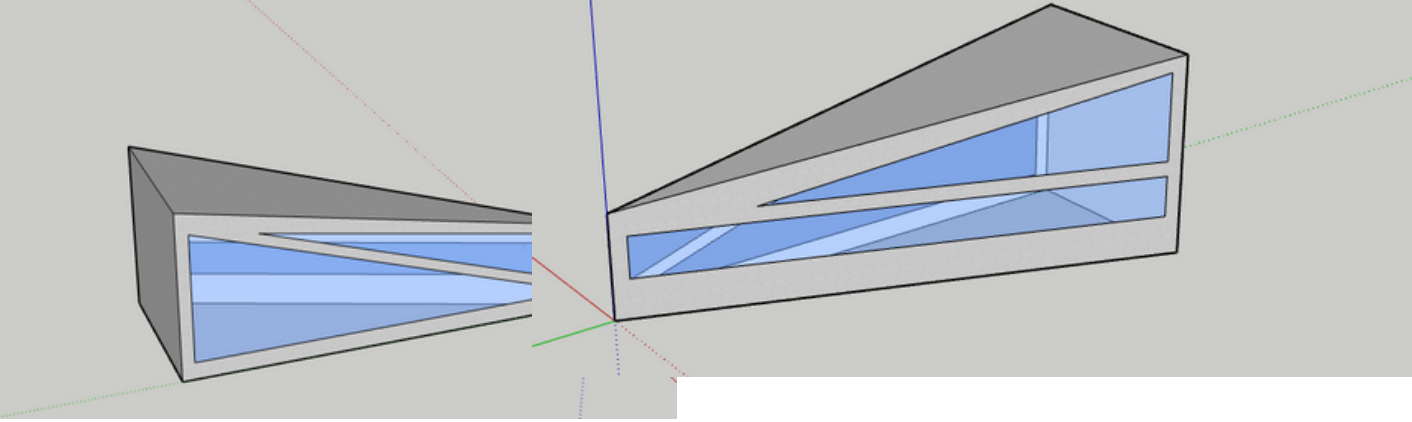


- This elevated part of the study space is the roof of the courtyard or open space, this elevated roof makes the space more open and inviting



- This design's strong point is it would have a lot of natural light lighting the building up.

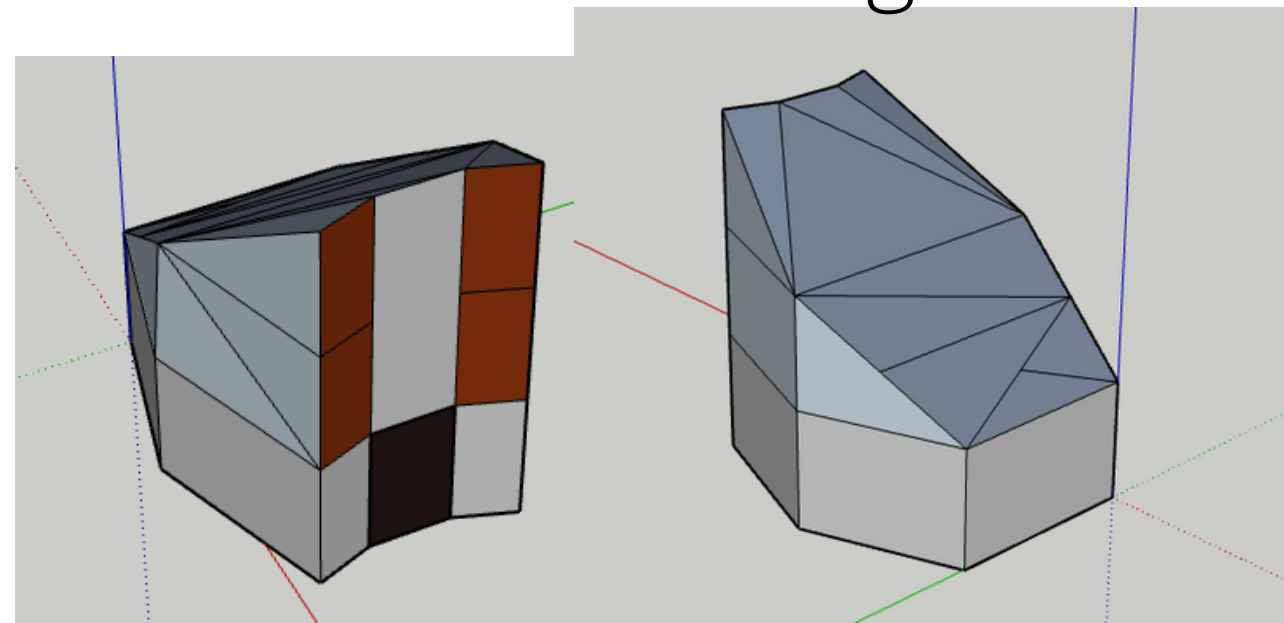


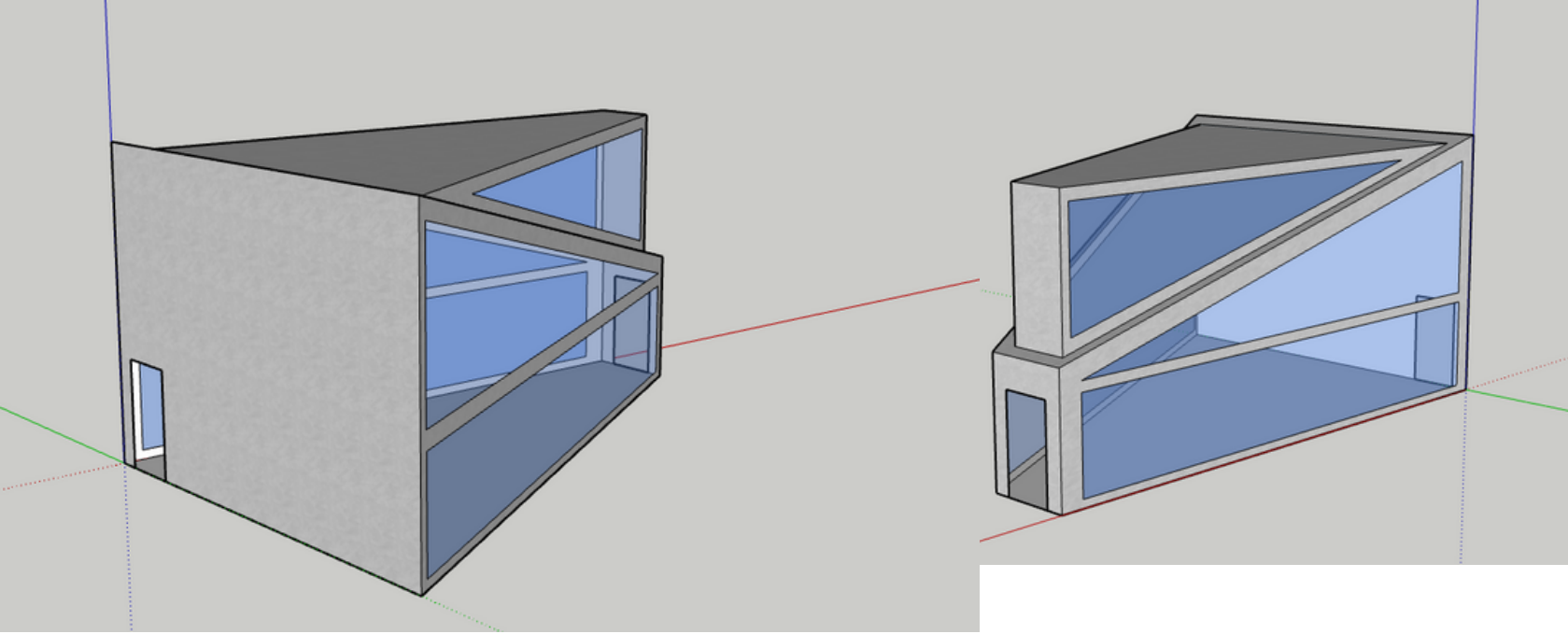


pros- simple, good for rainy weather.

cons- the top floor would be half the size it could be

pros- the first floor has a lot of room for furniture  
cons- the 2nd floor would have half the space of the first and the many corners it has makes it hard to put any big windows on the design



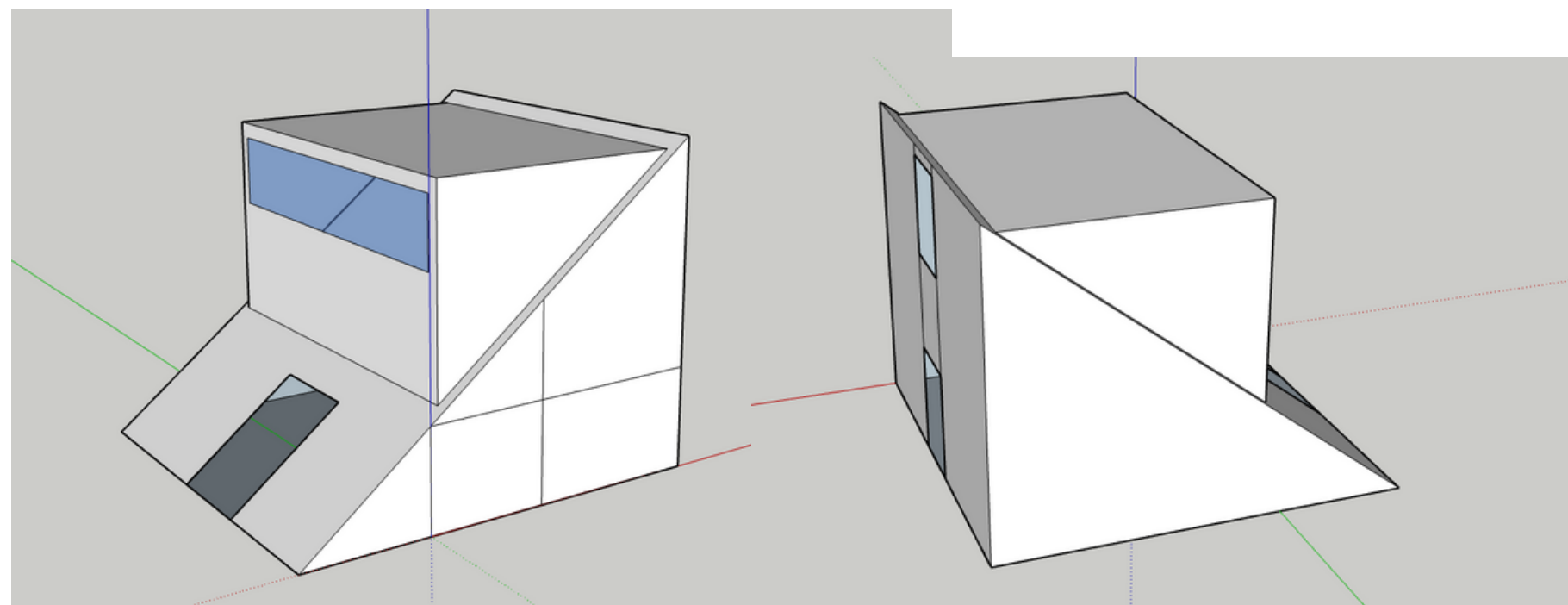


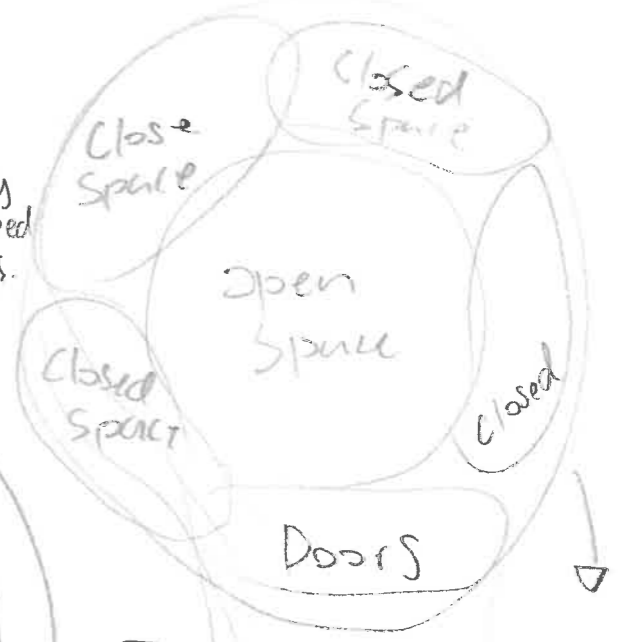
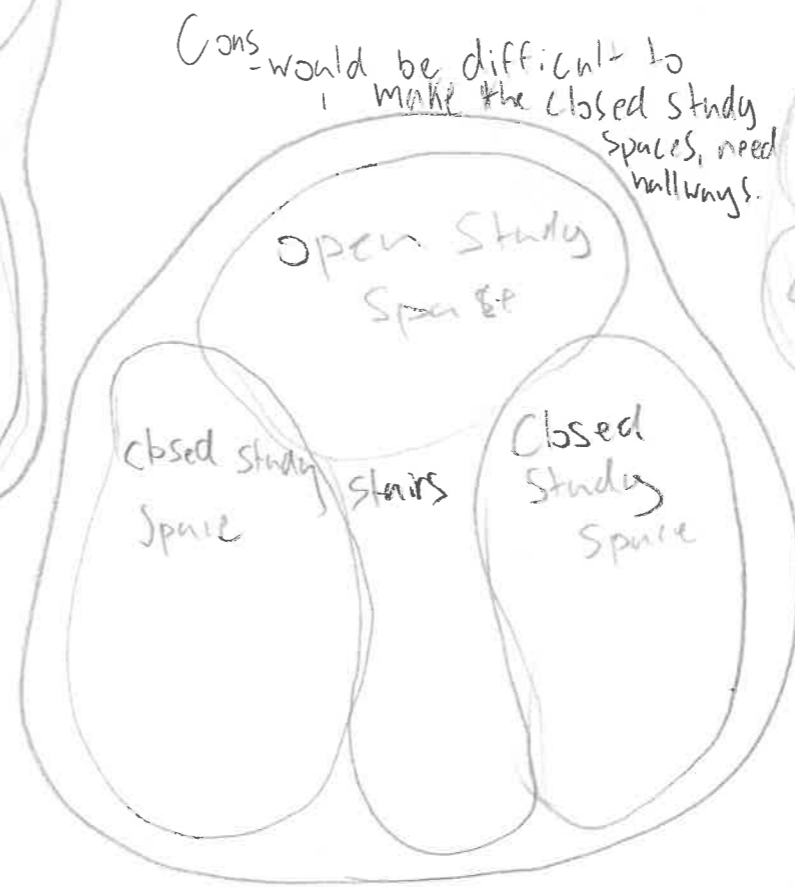
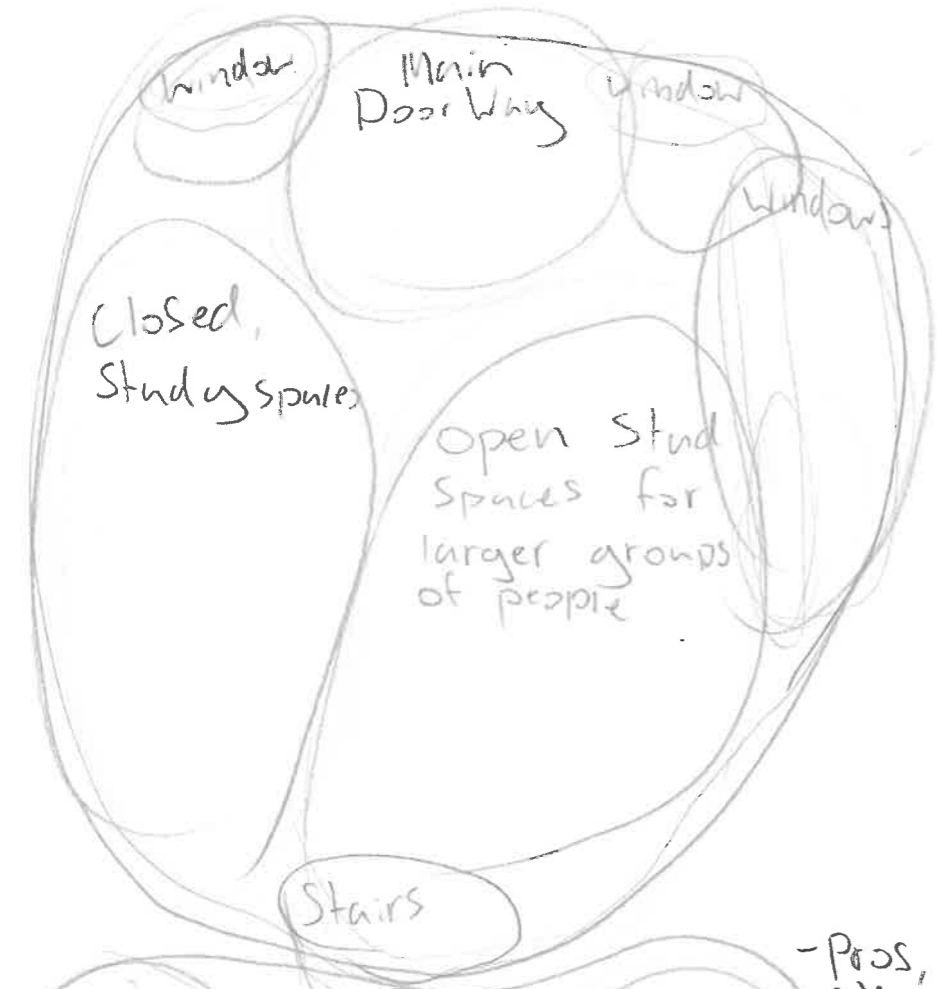
This is the exterior design that I am going forward with, it has the most positives and the design looks the best out of all of them

pros- the design has a good amount of space, both floors have nearly the same amount of space. many large windows make the design very open and in less need for lights.

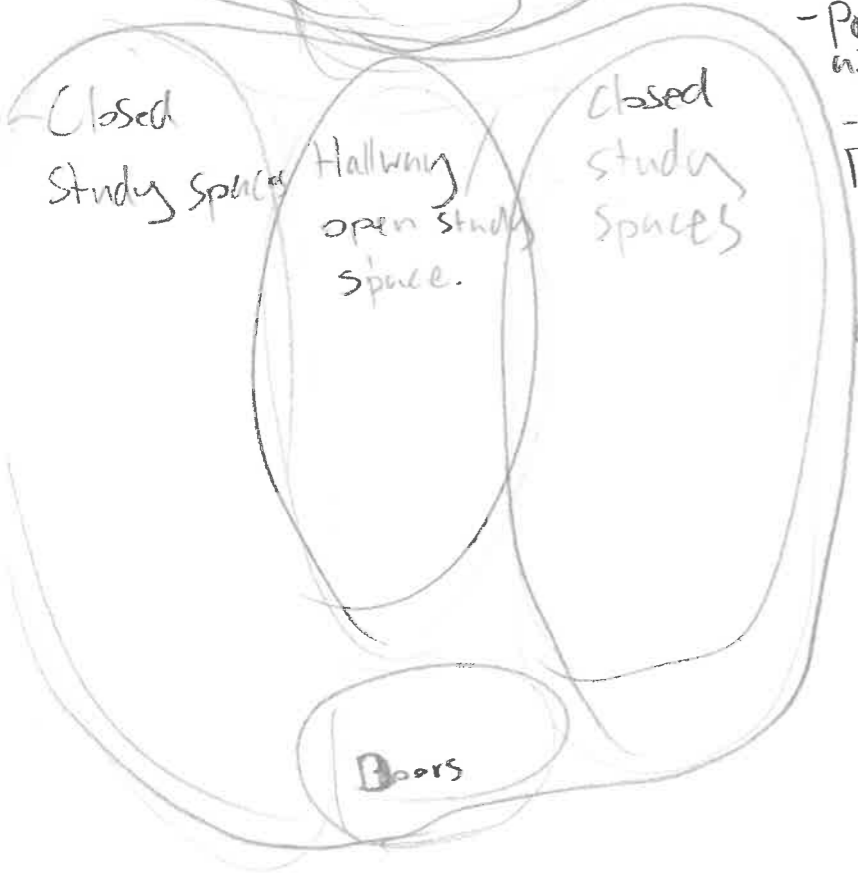
cons- since most of the building is windows it might be hard to put things like outlets in places.

pros- the design is able to attach to another building on the second/first floor  
cons -space is limited on both floors

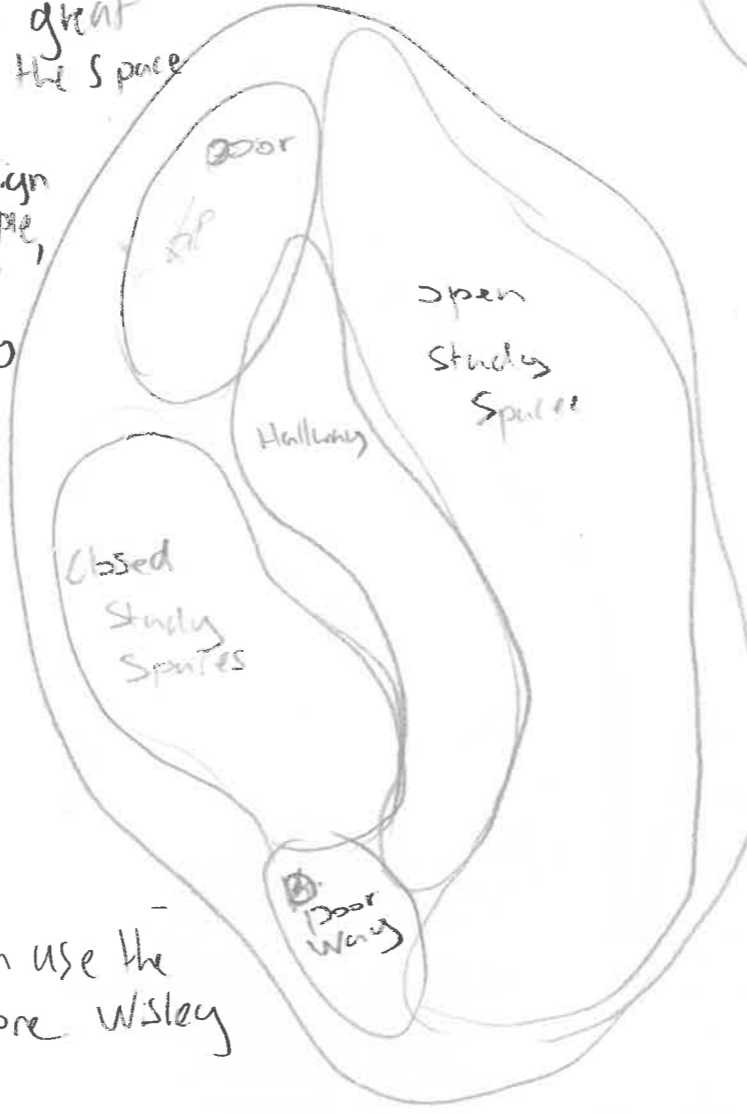




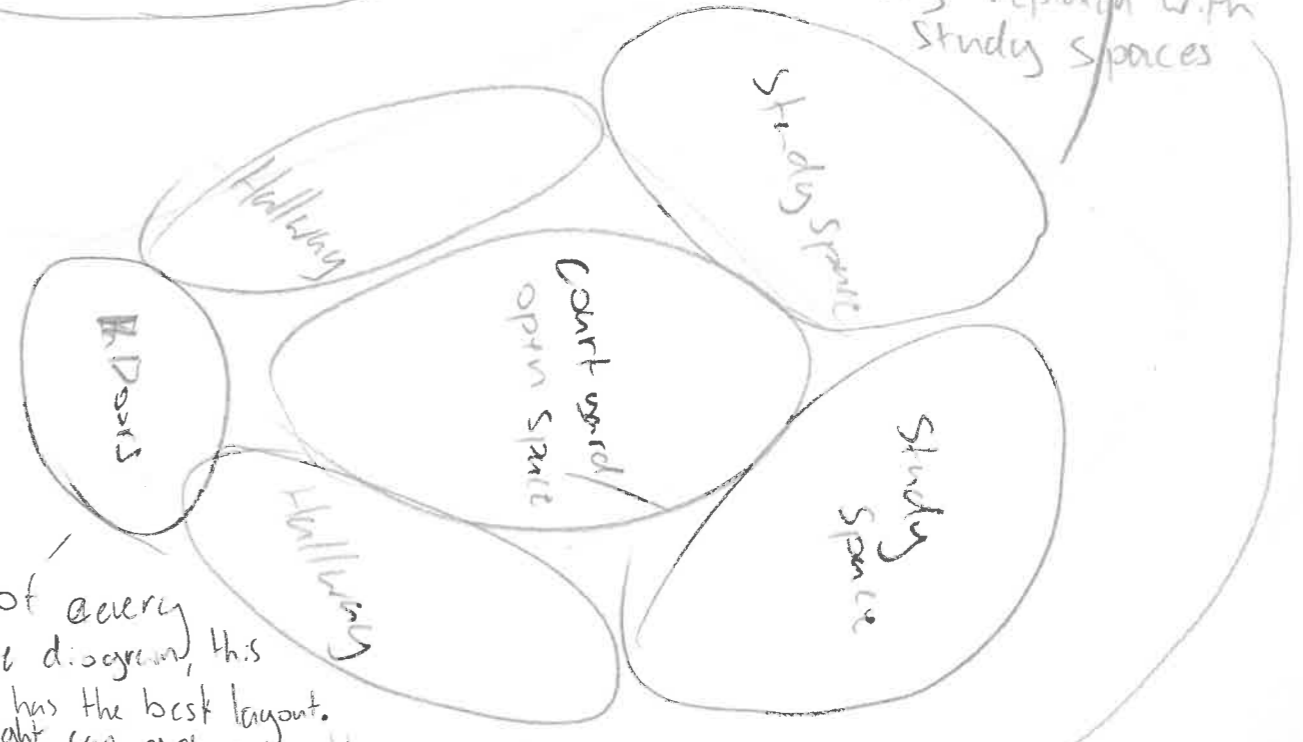
These two last bubble diagrams are the best/most open. top one is a little round, don't like that. and the bottom one can have the hallway replaced with study spaces



-Pros, a great use of the space  
-Cons This design is simple, no room for creativity



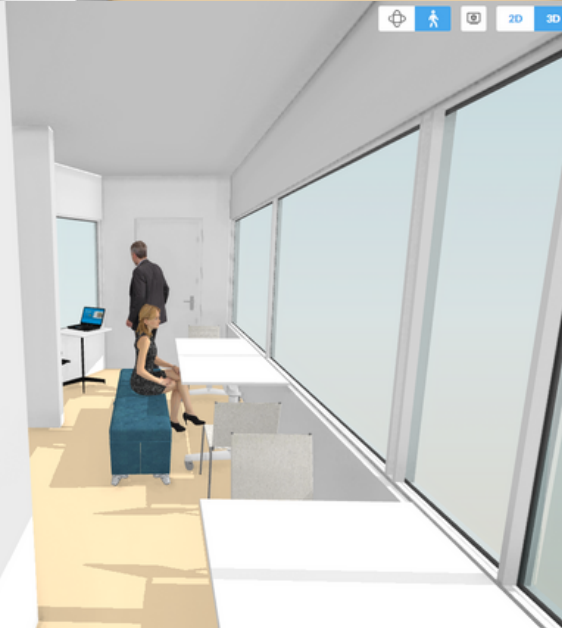
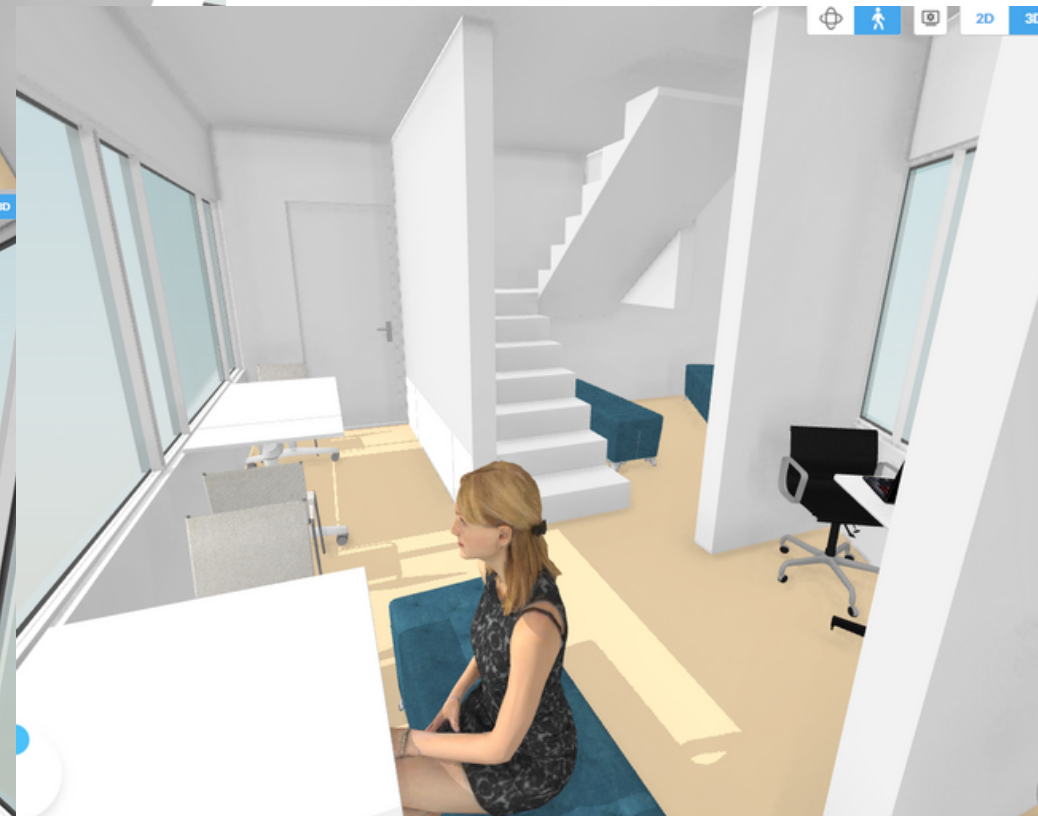
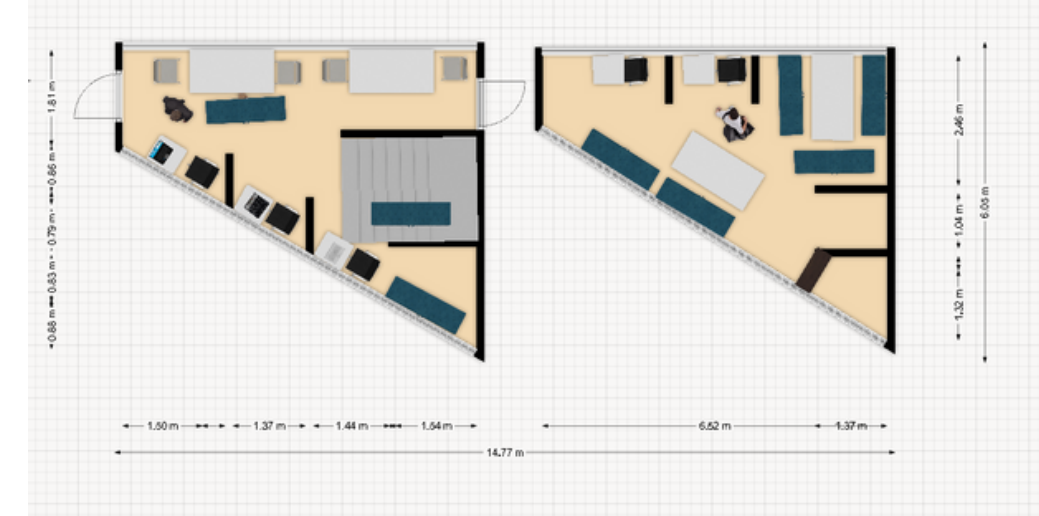
out of every Bubble diagram, this one has the best layout. More light can get into the Building.



Cons - can use the space more wisely  
Pros - The rooms could be an interesting shape.

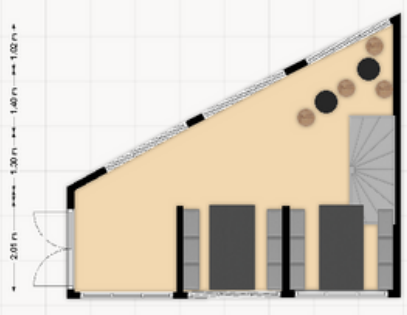
In conclusion, I will choose the design above, while also changing a few things

pros- furniture is movable/on wheels,  
has study spaces for people who like  
to study by them self.  
cons- cramped, not the best use of the space

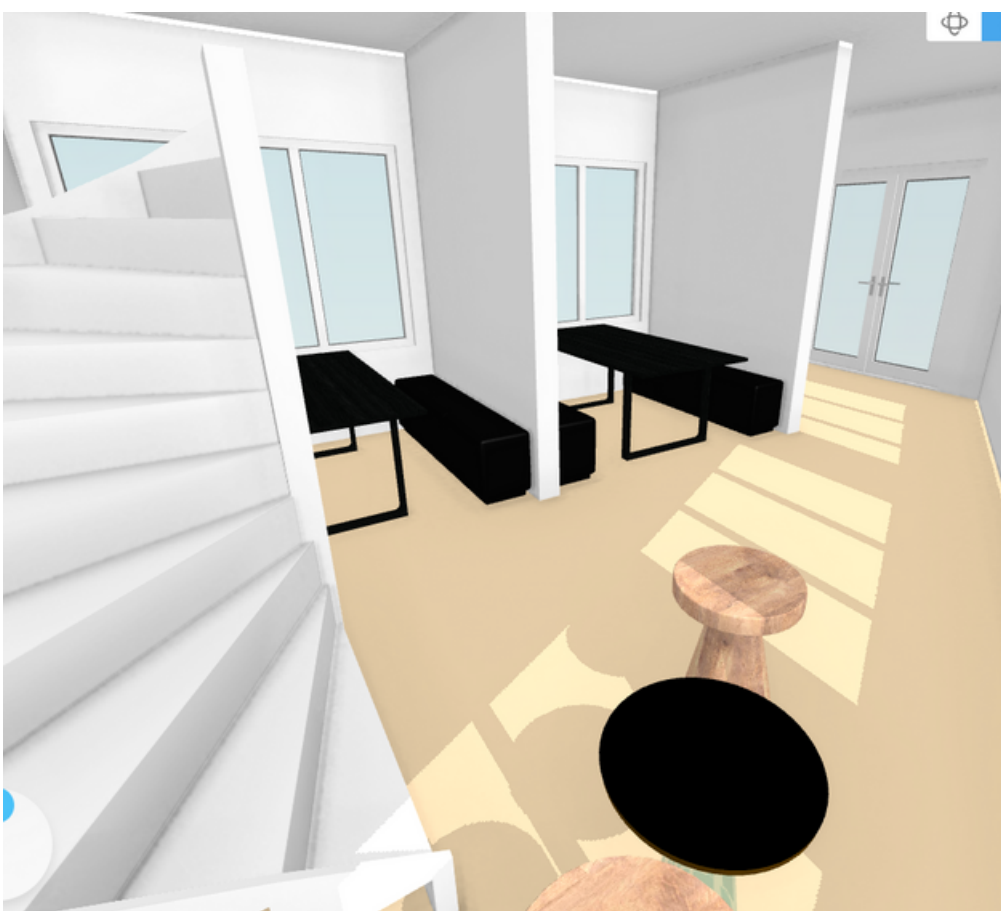




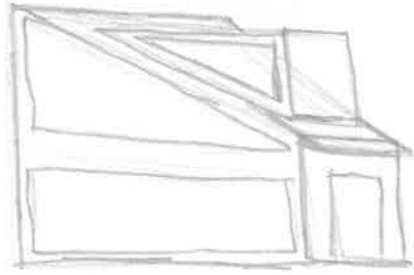
pros- not cramped like the other floor plan, can hold 30+ people and has a lot of seating variety  
cons- no specific area for individual studying



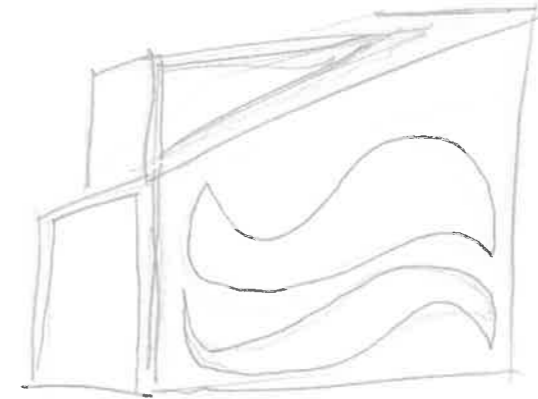
This is my chosen floor plan



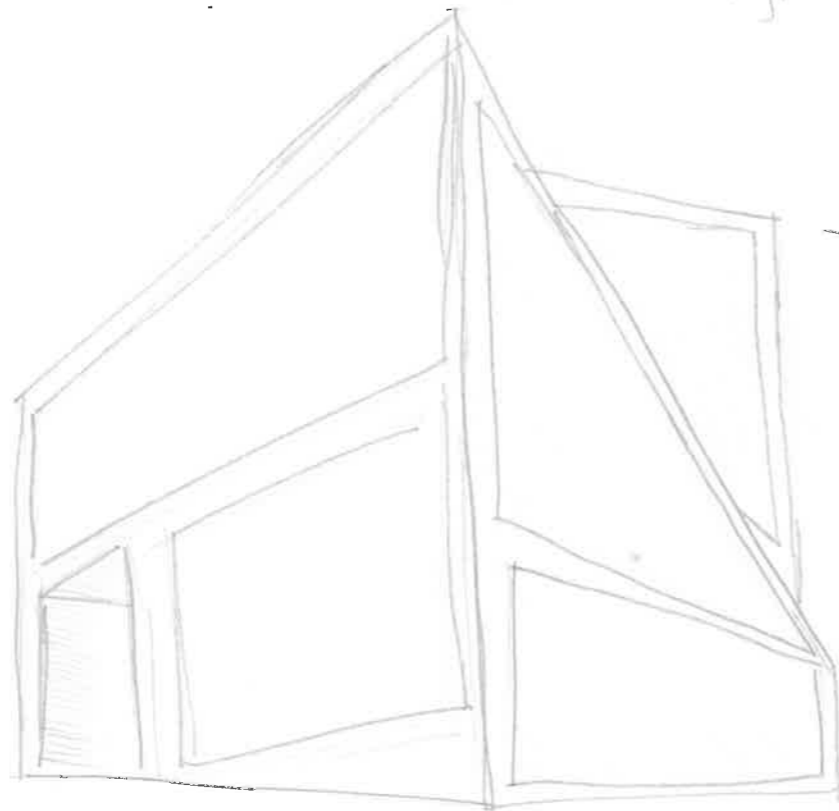
- I will go forward with the cover over the front door, as it will benefit the user friendliness.



- a cover over the doorway with a gutter  
 Pros, stops water from sliding off the roof onto students entering the building.



- Different Shaped windows.



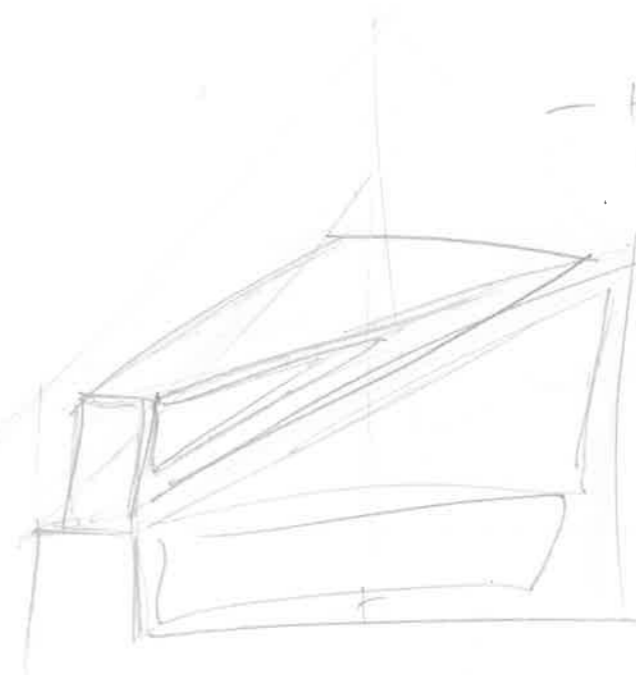
- I will go forward with this, although the windows are not facing the sun, it will make the spaces more open, and it will add a little more light to the room.  
 - windows at the back of the building

Pros, more light coming into the building  
 Cons, more expensive, the windows aren't facing the sun.

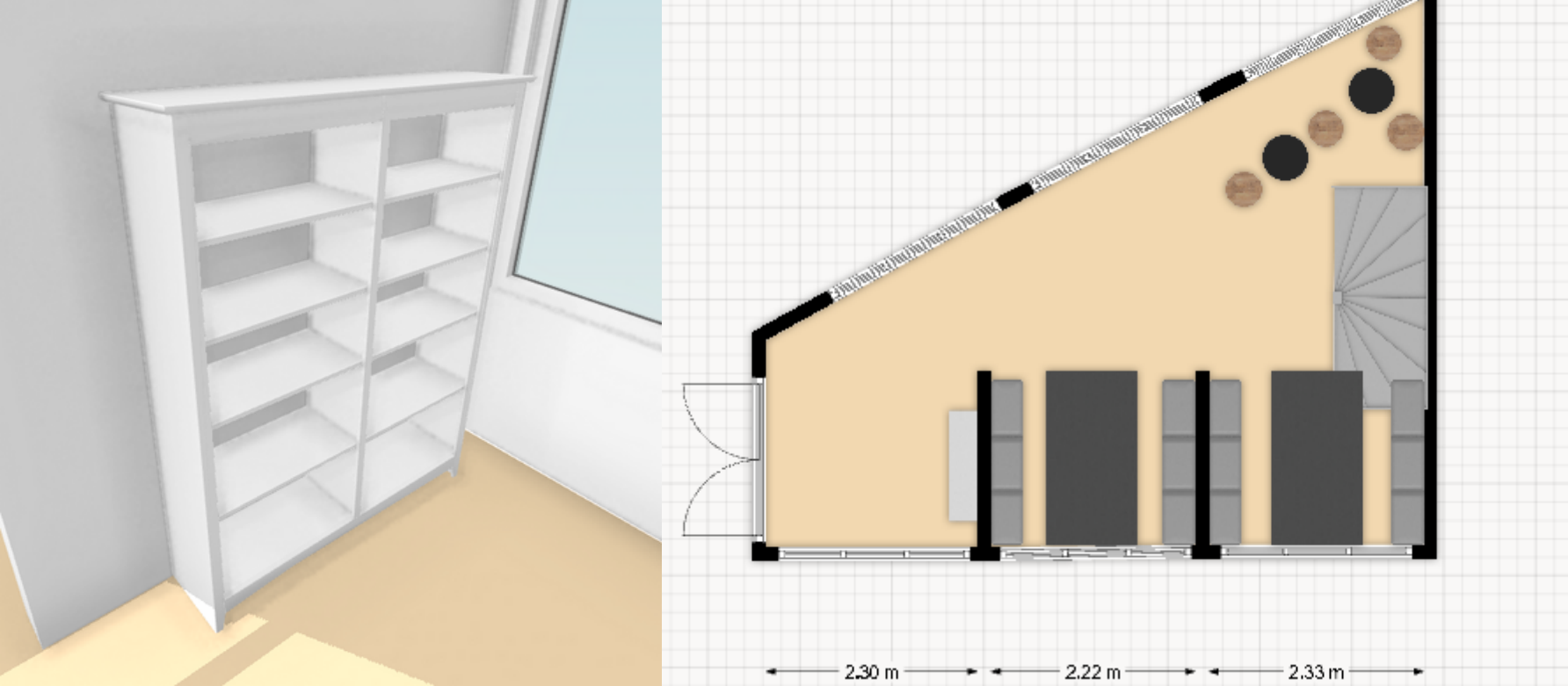
- top roof slightly slanted  
 Pros for rain to slip off,

Cons, makes the room smaller

Pros, water won't be stuck on the top roof.

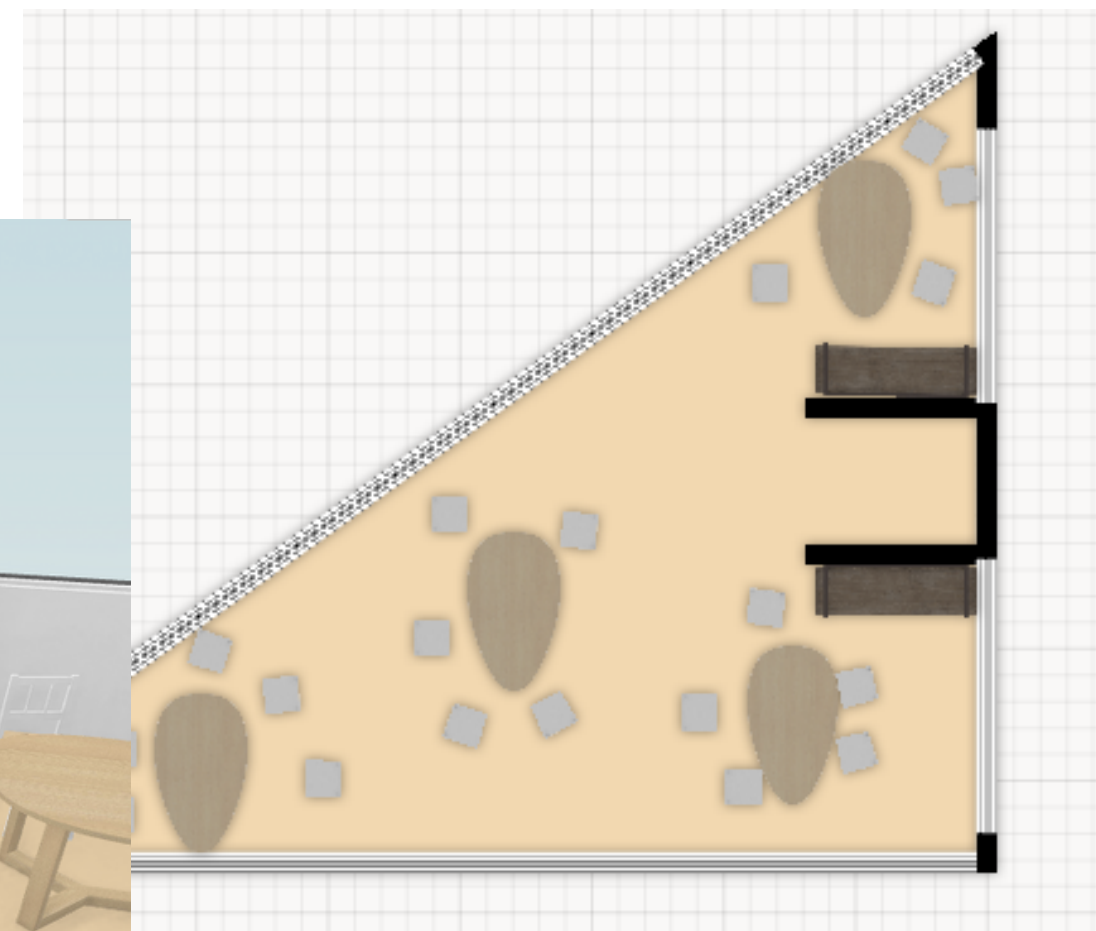
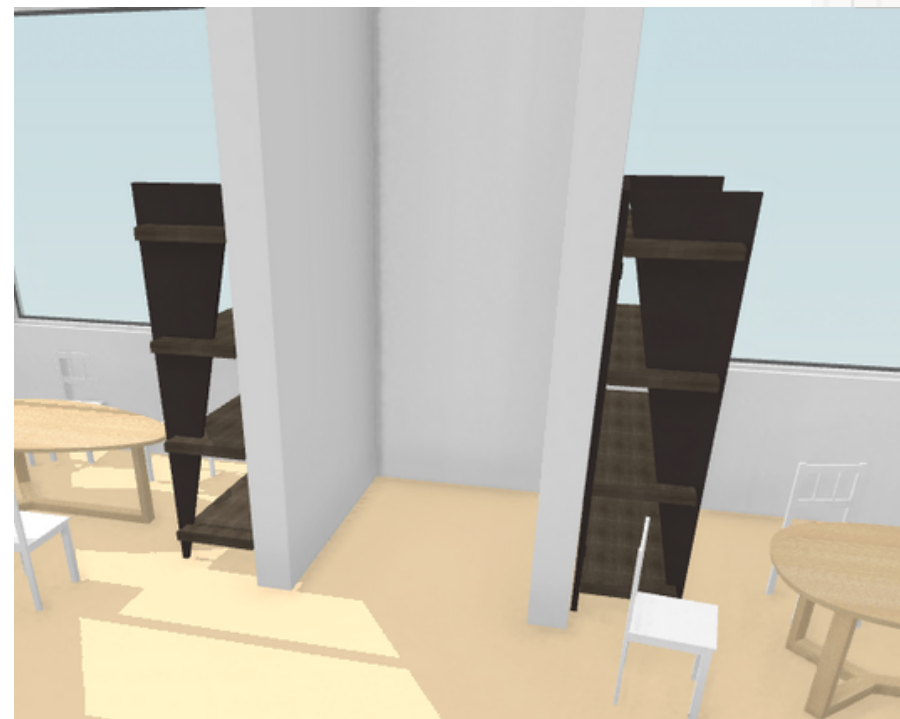


Extend ext



I added storage at the entrance for students to put their bags, and for people going up to the second floor there is storage at the entrance of the second floor.

Something that I cant show in floor planner, I will ad a set of outlets at each seating area.







## Achievement Exemplar 2022

Subject	Design and Visual Communication	Standard	92002	Total score	3
Grade score	Annotation				
A	<p>This project shows evidence of selecting a site and thinking about the location for a study building for students. The building is shown on this site at the end but, other than that, no thinking about the site is evident. A variety of ideas for the form of the building have been presented using 3D sketching techniques. Accompanying notes make references to function and imply a link to people. An idea for the building's form is selected with some reference to functional considerations.</p> <p>For Merit, there should be a stronger consideration of people when making choices. Bubble diagrams and Floorplanner have been used to think about the interior of the building. A link to people is clearly shown during this stage. A number of options have been considered for the interior arrangement and a final has been selected. The final form is shown on site and is the same as the form originally selected from the ideas. There is not a clear relationship between the interior and exterior of the building. No stairs are shown on the floor plan to connect the levels.</p> <p>For Merit, there should be a sequence of improving both the interior layout and the exterior of the building. The complex nature and large scope of this context have made it challenging to show development.</p>				