



KETE MANARUA

Pāngarau 2024

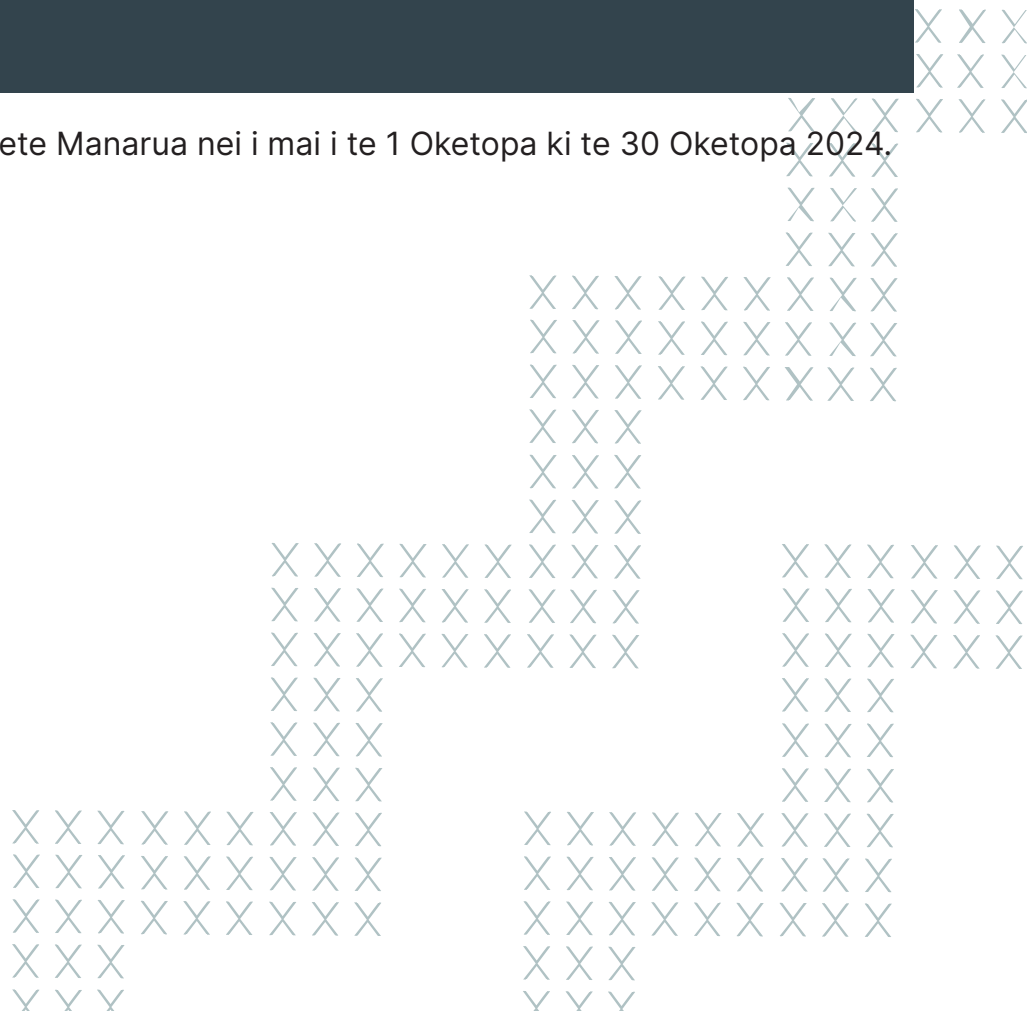
32412 Te whakamahi pāngarau hei whakaoti rapanga o te ao o te ākonga


WHIWHINGA: 10

Ka taea te tuku mai te Kete Manarua nei i mai i te 1 Oketopa ki te 30 Oketopa 2024.



Mana Tohu Mātauranga o Aotearoa
New Zealand Qualifications Authority



A photograph of a tree trunk completely covered in dense, vibrant green ivy. The ivy leaves are small and rounded, creating a thick, textured surface. The background is a soft-focus forest with green foliage. Overlaid on the center of the image is white text in a clean, sans-serif font.

**Kei hopu tōu
ringa ki te aka
tāepa, engari
kia mau te aka
matua**

Ngā Ihirangi

He Kupu Whakataki 4

Tūmahi Aromatawai 7



Kete Manarua

Ka maka te pakapaka, ka ohu te karoro

He Kupu Whakataki

Kete - ko te kete i pū mai i te pā harakeke me tōna whakapapa.

Manarua – e rua ōna mana. Tuatahi, ko te mana o ngā taonga ka kohikohia me ngā mahi huhua ka whakatutukihia e te ākongā. Tuarua, ko te mana o te ākongā, ko tōna whānau, hapū, me tōna iwi hoki, ko tōna ake mana motuhake tonu.

Te Motuhēhē o ngā mahi

E taea e ngā ākongā te ako ngātahi, te mahi ngātahi rānei hei kohikohi kōrero i ngā puna tautoko huhua. Heoi, me mātua mōhio nei te pouako, nā ngā ākongā anō ngā mahi i whakarite, i whakatakoto.

Hei akiaki tonu i te hāponotanga o ā rātou mahi katoa me whakamahi anō ngā ākongā i ā rātou ake kupu. Me tautohu ngā tikanga tohutoro e whakamana anō ai te puna o te mātauranga.

Mā te mihi e whakaatu, e whakanui hoki i ngā tāngata me ngā puna āwhina i puta ai ā rātou nā mahi. Hei tauira:

- He rerenga kupu poto e tohu ana i te pūtakenga mai o tētahi kōrero;
- He rārangi tohutoro i te whārangi whakamutunga o ngā mahi;
- He mihi ki te tangata | puna āwhina;
- Ngā momo puna āwhina, puna kōrero rānei:
 - » Kōrero ā-waha: he uiui kaumātua, pakeke, rangatira, mātanga rānei;
 - » Ngā pukapuka i whakaputa;
 - » Ngā pukapuka kāore i whakaputa;
 - » Wāhitau ipurangi.

Te Tāpae i te Kete Manarua

Hei te wāhanga tuatoru ka tuku a NZQA i ngā tohutohu mō te tāpae i ngā taunakitanga Kete Manarua.

E pai ana te tāpae mai i ngā taunakitanga hei kōnae matihiko, ahakoa kōnae oro, kōnae ataata rānei, hei PDF kē rānei, he kōtuinga rānei o ngā mea e rua. Whakakīā anō hoki e te kaiako te Pukauhi Kete Manarua mō ia Kete Manarua.



Kete Manarua

Te Whakataki: He mahi takitahi tēnei aromatawai e tika ana kia whakahaerengia i te akomanga. E rima ngā ngohe o tēnei aromatawai. Ko te take o ia ngohe, ko te whakamahi i te pāngarau me te tauanga hei whakaoti rapanga tātai mō ngā pūāhua i ngā horopaki Māori.

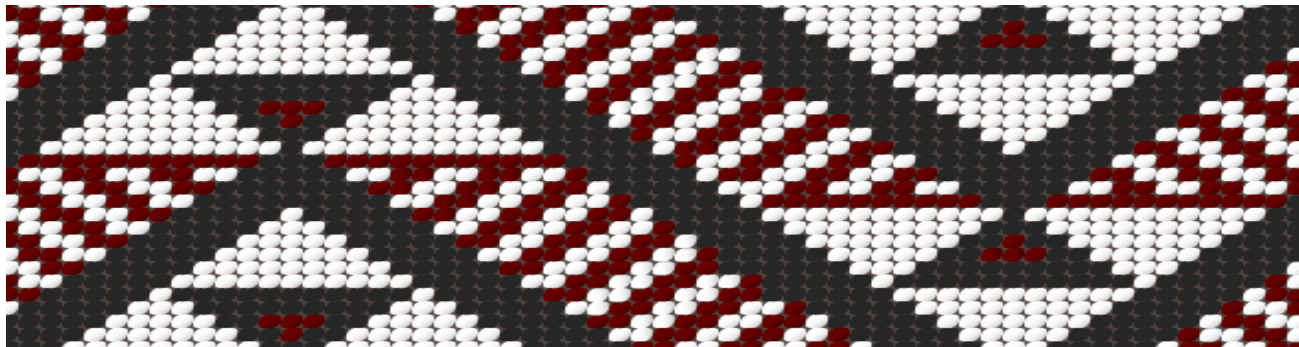
Ko ngā ngohe katoa e hāngai ana ki tētahi kaupapa matua. Kua whakarite tō kura kia haere atu koutou ki ngā whakataetae kapa haka ā motu mō ngā kura tuarua.

- Te Ngohe 1: Ngā taurira kākahu
- Te Ngohe 2: Ngā utu o te haerenga
- Te Ngohe 3: Te Tunu Pihikete
- Te Ngohe 4: Ngā ahunga nekehanga
- Te Ngohe 5: Ngā tauanga kapa haka

Ko ngā pūmanawa rorohiko pērā i te Excel, i te Word, me ngā pūmanawa rorohiko hoahoa, ngā mea pai hei whakaatu mai i ō mahi. Ka āhei rānei te whakamahi i ngā pepa whai rārangi, i ngā pepa tukutuku rānei hei waihanga i ō taunakitanga mō te kōpaki.

Tūmahi Aromatawai

Te Ngohe 1: Ngā tauira kākahu



Kahutoi Te Kanawa, 'Māori weaving and tukutuku – te raranga me te whatu - Tāniko and tukutuku',

Te Horopaki:

Kua whakatauhia e ngā kaiwhakahaere kia tuituia ētahi kākahu hou mō te kapa haka o tō kura. Kei te hiahia rātou i tētahi pari hou, i tētahi tātua hou hoki.

Ko tāu mahi i tēnei ngohe, he waihanga i tētahi tauira pari, i tētahi tauira tātua rānei mō tēnei kapa haka.

Ngā Rauemi

- He pepa tukutuku
- Ētahi kohinga whakaahua o ngā momo kākahu kapa haka

Hei mahi 1:

1. Rangahaua ētahi momo tauira kākahu ā-kapa, hei manawakura mōu.
2. Tāngia ētahi tauira hukihuki o tētahi pari, o tētahi tātua rānei - Whakaarohia te tikanga o ngā tae, ngā tikanga o ngā tauira kua kōwhiritia, tae atu ki ngā kōrero kei tua o te tauira.
3. Āta whakatauhia te tauira whakamutunga e hiahiatia ana e koe hei pari, hei tātua rānei mōu.
4. Whakamāramatia mai tāu tauira me tōna hononga ki tō kura.
5. Tautuhia ngā āhuatanga pāngarau o roto mai o tāu tauira, ā, hei tauira; te panonitanga, te inenga, te tau.

Tukanga Pāngarau: Te Panonitanga me te Inenga

- *Te whakaata*
- *Te nekehanga*
- *Te hurihanga*
- *Te whakarahi*
- *Te paenga*
- *Te horahanga*
- *Te ōwehenga*

Hei mahi 2:

Kua whakaaro ake ngā kaiwhakahaere kia tiro atu ki ētahi piupiu hou hoki mō rātou. Ko tāu mahi i tēnei ngohe, he waihanga i tētahi tauira mō ngā piupiu.

1. Rangahaua ngā momo tauira piupiu hei manawakura mōu.
2. Tāngia mai tētahi tauira hukihuki.
3. Āta whakatauhia te tauira whakamutunga e hiahiatia ana e koe hei piupiu mō te kura
4. Inehia tō hope, ā, whakatauhia te rahi o te piupiu e tika ana mōu.
5. Whakaarohia te maha o ngā whenu e hiahiatia ana e te kairaranga kia eke ai te piupiu ki te rahi pai e tika ana.
6. Tāutuhia ngā inenga katoa o tāu tauira piupiu, arā, te roa, te whānui, me ngā wāhanga o te tauira.

Tukanga Pāngarau:

- *Te ine*
- *Te roa*
- *Te whānui*



Te Ngohe 2: Ngā utu o te haerenga



Te Horopaki:

Hei tēnei tau, ka tū te whakataetae Kapa Haka Kura Tuarua ki Whakatū. Kei te whakarite tō kura ki te kawē i ngā ākongā e 50 me ngā pakeke tokowaru. Ka rere atu ki Whakatū, ka moe atu mō ngā pō e 6. Ka rētihia ētahi wēne, ka noho ki tētahi hōtēra mō te wiki.

\$159 te utu mō tētahi wēne i ia rangi. Ka 15% te itinga iho o te utu ki te rētihia ngā wēne e whā, neke atu rānei. E \$99 te utu mō ia rūma, i ia pō. E āheī ana te tokowhā ki te moe ki te rūma kotahi. Kua whakaae te hōtēra kia 20% te itinga iho o te utu ki te neke atu i te 5 pō te roa o tō noho.

Ko te utu mō ngā kai kua whakaritea mō ia tangata, i ia rā, ko te \$10 mō te parakuihi, ko te \$15 mō te kai o te rānui, ko te \$25 mō ngā kai o te pō, me te \$10 mō ngā paramanawa.

Kua whakatauhia kia hokona atu ngā pihikete mō tētahi o ngā kohinga pūtea, ā, \$15 te utu mō ngā kai whakauru hei tunu i ngā pihikete tiakarete e 24, ā, \$12 te utu mō ngā kai whakauru hei tunu i ngā pihikete 'Brownie' e 20.

(Mā tō kaiako e tuku te utu o ngā rerenga atu i tō rohe ki Whakatū, o te hoki atu anō ki tō rohe me te utu o te kawē i ngā tueke, pēnei i ngā rakuraku, i ngā ipu kākahu me ngā taputapu haka.)

Ko tāu mahi, he tātai i te tapeke o te utu o te haerenga ki ngā whakataetae.

Whakaaturia ngā tātainga katoa.

Hei mahi 1

6. Whiriwhiria te utu mō te rerenga, mō ngā wēne, mō te hōtēra, me ngā kai mō te kapa.
7. Tātaihia te tapeke mō te haerenga nei.
8. He aha te utu mō ia tangata?

Tukanga Pāngarau:

- *Te tau.*

Hei mahi 2

7. Whakatauhia te utu mō ngā pihikete hei hoko atu mā koutou, kia pai ai te kohi pūtea.
8. Tātaingia te maha o ngā pihikete me hoko atu kia pai ai te kohi pūtea, me te hoko i ngā kai whakauru
9. Whiriwhiria te nui o te moni ka riro i a koe i muri i te hokonga atu o ngā pihikete.

Tukanga Pāngarau:

- *Te tau*
- *Te tauanga*

Te Ngohe 3: Te Tunu Pihikete



Te Horopaki

Kua tae ki te wā kia whakamātauria ō pūkenga tunu pihikete.

Hei Mahi 1:

1. Rangahaua ētahi tohutaka pihikete (tiakarete) hei tunu māu.
2. Kia kōwhiria e koutou ko ō hoa ako te tino tohutaka hei whakamahi mā koutou, whakareatia ngā inenga o te tohutaka ki te wāriu mō te maha e hoko atu ana e koutou.
3. Me tunu e koutou ko ō hoa ngā pihikete (tiakarete).

Te Tukanga Pāngarau:

- *Te ine*
- *Te pāngarau whakahāngai*

Hei Mahi 2:

1. Rangahaua tētahi tohutaka 'Brownie' hei tunu māu.
2. Kia kōwhiria e koutou ko ō hoa ako te tino tohutaka hei whakamahi mā koutou, whakareatia ngā inenga o te tohutaka ki te wāriu mō te maha e hoko atu ana e koutou.
3. Me tunu e koutou ko ō hoa ako ngā 'Brownie'.

Tukanga Pāngarau:

- *Te ine*
- *Te pāngarau whakahāngai*

Te Ngohe 4: Te Ahunga Nekehanga



I toa whakaihuwaka a Raukura ki te whakataetae kapa haka ā motu 2018.

Te Horopaki:

Hei whakarite i a koutou mō ngā whakataetae, waihangatia ētahi nekehanga, me ētahihunga mō te whakaeke. Kia auaha ngā whakaaro. Whakaarohia ngā nekehanga pai hei nekehanga ā-kapa. Whakaarohia te nui o te atāmira e kapi katoa ai te papa i ngā nekehanga. Tūhonoa ngā nekehanga ki ngā kupu o te waiata

Hei Mahi 1:

1. Whakamaheretia, ka tuhia ai ngā nekehanga me ngā ahunga e taea ana e te kapa. Whakaaturia mai hoki aua nekehanga, e pai ai ngā kaihaka te ako.
2. Tuhia, tāngia rānei ngā tātaitanga ahunga me ngā tātaitanga wāhi ka whakamahia mō te whakaeke.

Te Tukanga Pāngarau:

- *Te wāhi*
- *Te ahunga*

Te Ngohe 5: Ngā Tauanga Kapa Haka



Te Horopaki:

Hei whakakapi i te kaupapa nei, ka tūhurangia e koe ngā māka i puta i te whakataetae kapa haka. Mā te kaiako e tuku atu i ngā raraunga e hāngai ana ki te whakataetae, hei tūhura māu. (He raraunga whakarōpū rānei, he raraunga tau rānei.)

Hei Mahi 1:

1. Āta tirohia ngā raraunga, ka whakaaro ai ki ētahi pātai e rua hei tūhura māu. Ko te take o ngā pātai, ko te whakatairite i ngā raraunga o ētahi o ngā rōpū.
2. Tuhia, kia rua ngā pātai. He pātai whakatairite rānei, he pātai pānga rānei, he pātai tūhura rānei, he pātai whakarāpopoto rānei.
3. Mō ia pātai, me tuhi anō hoki:
 - te taurangi e tūhuratia ana
 - ngā rōpū raraunga e whakatairitea ana.

Whakaaturia āu pātai ki tō kaiako. Mēnā e tika ana te āhua o ngā pātai, ka wātea koe ki te tīmata i te mahi tuarua. Ki te kore e tika t/ētahi o ngā pātai, mā tō kaiako koe e paku āwhina.

Hei Mahi 2:

Te whai i ngā tikanga tūhuratanga tauanga hei whakaputa whakataunga e hāngai ana ki te pātai.

1. Kōwhiria tētahi o ngā pātai i oti ai i a koe i te mahi tuatahi, hei tūhura māu. *Te tātari i ngā raraunga e 2.*
2. Tuhia kia kotahi te kauwhata (kia nui ake rānei) e hāngai ana ki tāu pātai, hei whakaatu i ētahi āhuatanga rerekē o ngā raraunga.
3. Whakaaturia ngā tātaitanga tauanga e hāngai ana ki te tūhuratanga.
4. Whakamāramatia ngā whakatairitenga o tāu e kitea mai ana i ngā raraunga; pērā i te ia o ngā raraunga, i ngā tauira, i ngā āhuatanga kōhure, i te āhua o ngā raraunga.
5. Ki ōu whakaaro, he aha pea te painga o tēnei whakataetae ki ngā ākongā?
6. He aha ētahi o ngā tikanga Māori, o ngā uara Māori kei ngā whakataetae nei?

Te whakataunga

7. Tuhia he whakataunga hei whakarāpopoto i āu kitenga, i āu tūhuratanga.

Ngā taunakitanga a te ākongā:

- he ripanga Excel
- he whakarāpopototanga ki te taupānga Word
- me kuhu mai rānei ki konei he pepa whai rārangi.

Te Tukanga Pāngarau:

- *Te tuhura tauanga*
- *Te tātari raraunga*
- *Te whakatau i ngā kitenga o te tuhura raraunga*

Ngā Rauemi

[Akoranga Ripanga Rorohiko 1](#)

[Akoranga Ripanga Rorohiko 2](#)

[Akoranga Ripanga Rorohiko 3](#)

[Akoranga Ripanga Rorohiko 4](#)

MĀTĀPUNA

Kahutoi Te Kanawa, 'Māori weaving and tukutuku – te raranga me te whatu - Tāniko and tukutuku', Te Ara - the Encyclopedia of New Zealand, <http://www.TeAra.govt.nz/en/diagram/43485/taniko-designs> (accessed 1 March 2024)

Raukura win national kapa haka competition. Rotorua Daily Post. https://www.nzherald.co.nz/rotorua-daily-post/news/raukura-win-national-kapa-haka-competition/BACMV5TT42G3AGH63S7GALQF2A/?c_id=1503438&objectid=11683203