



KETE MANARUA

Pāngarau 2024

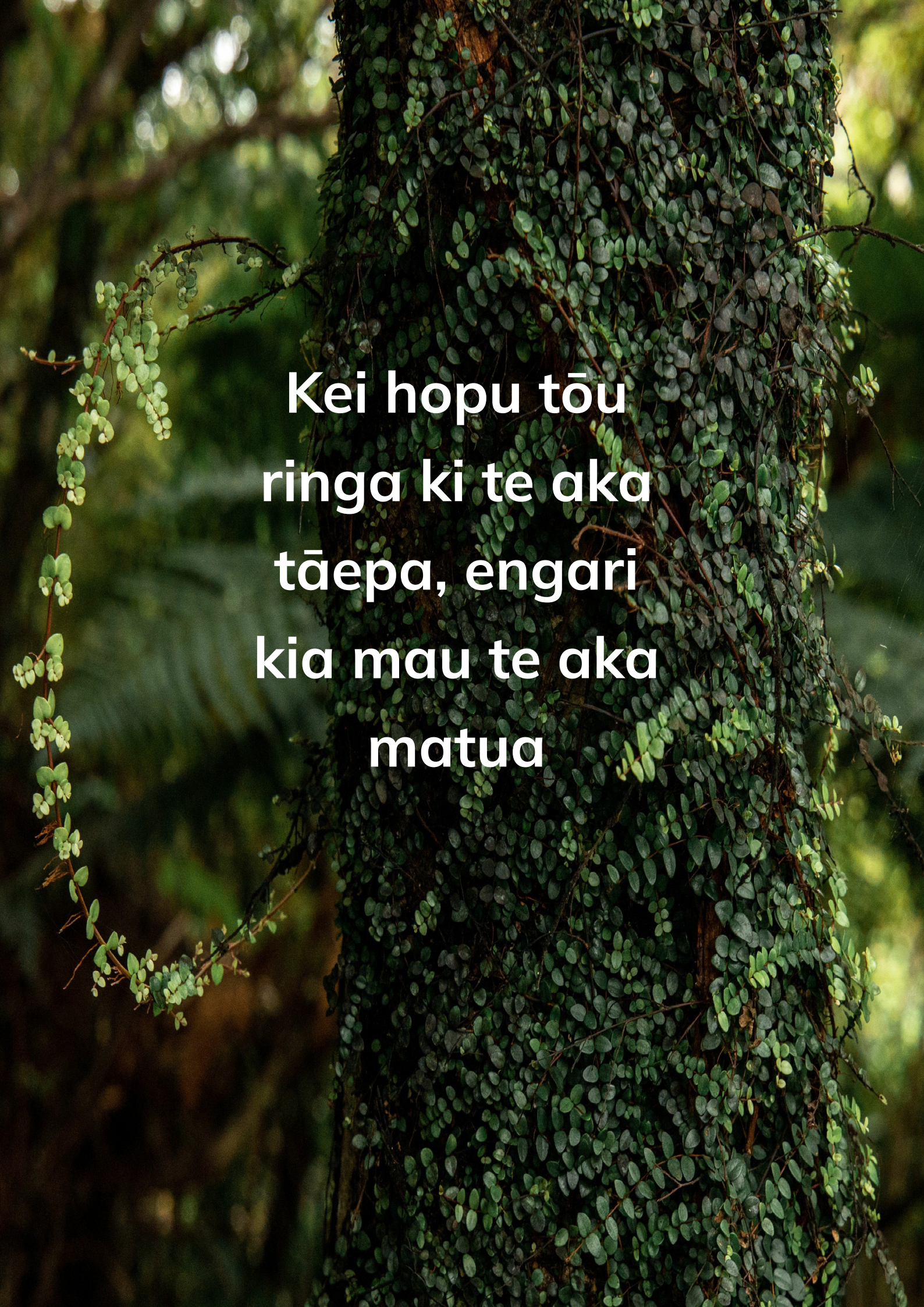
32412 Te whakamahi pāngarau hei whakaoti rapanga o te ao o te ākonga

WHIWHINGA: 10

Ka taea te tuku mai te Kete Manarua nei i te 1 Oketopa ki te 30 Oketopa 2024.



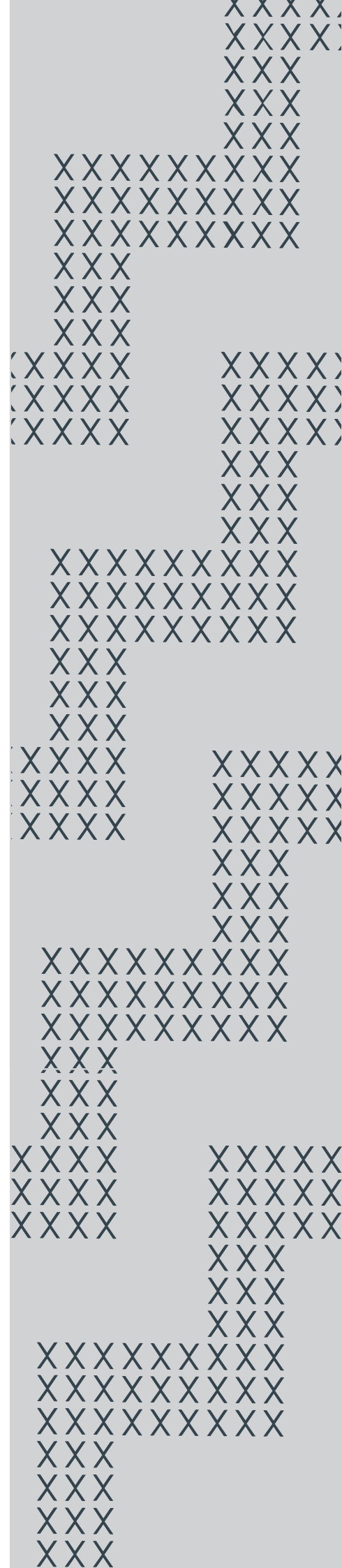
Mana Tohu Mātauranga o Aotearoa
New Zealand Qualifications Authority

A close-up photograph of a tree trunk completely covered in dense, green ivy. The ivy leaves are small, oval-shaped, and have a slightly glossy texture. The background is a soft-focus green, suggesting a forest setting. The text is centered over the tree trunk.

**Kei hopu tōu
ringa ki te aka
tāepa, engari
kia mau te aka
matua**

Ngā Ihirangi

He kupu whakataki	4
Paerewa	6
Tautuhinga aromatawai ā-waho	10
He aratohu mā te kaiako	14
Tūmahi aromatawai	15
Te pukauhi Kete Manarua	23
Te rārangi tiro tiro mō ngā taunakitanga Kete Manarua	24



Kete Manarua

Ka maka te pakapaka, ka ohu te karoro

He Kupu Whakataki

Kete - ko te kete i pū mai i te pā harakeke me tōna whakapapa.

Manarua – e rua ōna mana. Tuatahi, ko te mana o ngā taonga ka kohikohia me ngā mahi huhua ka whakatutukihia e te ākongā. Tuarua, ko te mana o te ākongā, ko tōna whānau, hapū, me tōna iwi hoki, ko tōna ake mana motuhake tonu.

Te Motuhēhē o ngā mahi

E taea e ngā ākongā te ako ngātahi, te mahi ngātahi rānei hei kohikohi kōrero i ngā puna tautoko huhua. Heoi, me mātua mōhio nei te pouako, nā ngā ākongā anō ngā mahi i whakarite, i whakatakoto.

Hei akiaki tonu i te hāponotanga o ā rātou mahi katoa me whakamahi anō ngā ākongā i ā rātou ake kupu. Me tautohu ngā tikanga tohutoro e whakamana anō ai te puna o te mātauranga.

Mā te mihi e whakaatu, e whakanui hoki i ngā tāngata me ngā puna āwhina i puta ai ā rātou nā mahi. Hei tauira:

- He rerenga kupu poto e tohu ana i te pūtakenga mai o tētahi kōrero;
- He rārangi tohutoro i te whārangi whakamutunga o ngā mahi;
- He mihi ki te tangata | puna āwhina;
- Ngā momo puna āwhina, puna kōrero rānei:
 - » Kōrero ā-waha: he uiui kaumātua, pakeke, rangatira, mātanga rānei;
 - » Ngā pukapuka i whakaputa;
 - » Ngā pukapuka kāore i whakaputa;
 - » Wāhitau ipurangi.

Te Tāpae i te Kete Manarua

Hei te wāhanga tuatoru ka tuku a NZQA i ngā tohutohu mō te tāpae i ngā taunakitanga Kete Manarua.

E pai ana te tāpae mai i ngā taunakitanga hei kōnae matihiko, ahakoa kōnae oro, kōnae ataata rānei, hei PDF kē rānei, he kōtuinga rānei o ngā mea e rua. Whakakīā anō hoki e te kaiako te Pukauhi Kete Manarua mō ia Kete Manarua.





PĀNGARAU

**32412 Te whakamahi pāngarau hei whakaoti rapanga o te
ao o te ākongā**

Whiwhinga 10

Ingoa	Te whakamahi pāngarau hei whakaoti rapanga o te ao o te ākonga		
Kaupae	1	Whiwhinga	10

Whāinga	Ko ngā ākonga kua whakawhiwhia ki te paerewa paetae nei, e āhei ana ki te whakamahi pāngarau hei whakaoti rapanga o te ao o te ākonga.
----------------	--

Whakaraupapa	Core Generic > Work and Study Skills
---------------------	--------------------------------------

Ngā tohu	Paetae
-----------------	--------

Kōrero whakamārama

- 1 Ko tēnei paerewa, nō te huinga paerewa Reo Matatini me te Pāngarau me mātua kawē mō te New Zealand Certificate of Achievement (NCEA). Ka aromātai tahi tēnei paerewa, te paerewa 32414, *Ka whakamahi i te reo kia tutuki ai tētahi pūtakenga whakawhiti kōrero, tuhituhi hoki* me te paerewa 32413 *Ka mārama, ka tautohu i ngā whakaaro matua o tētahi reo ā-waha, o tētahi reo ā-tā hoki* i ngā pūkenga tūāpapa o te reo matatini me te pāngarau e whai wāhi tonu ai te ākonga ki te ako, ki te mahi, me ērā atu āhuatanga o tōna oranga.
- 2 Mō tēnei paerewa, ko te pāngarau te āheinga o te ākonga ki te whai, ki te whakamahi, ki te whakamāori, te whakawhitiwhiti whakaaro pāngarau, me te reo matatini o te pāngarau hoki e taea ai e ngā ākonga te uru atu ki ētahi atu akoranga, whakawhanake i ngā pūkenga nui o te ao whānui, me te uru atu ki ngā mahi me o rātou hāpori. Kei roto hoki i tēnei ko te mārama hoki ki ngā āhuatanga o te ahurea-pāpori.
- 3 E hono ana tēnei paerewa ki ngā tukanga me ngā akoranga tāpua o te Tukutuku Ako – Pāngarau, kei te whārangi ipurangi ncea.education.govt.nz.
E hono ana hoki ki ngā anga e toru e whai ake nei:
 - Ki te mutunga o taumata 4 me te timatatanga o taumata 5 o te Marautanga Pāngarau.
 - Ki te kaupae 5 o ngā Learning Progressions for Adult Numeracy (LPAN)
 - Ki ngā whāinga o te Tīrewa Ako Pāngarau.
- 4 Me whakaatu māramatanga ngā ākonga ki ngā ngohe aromatawai e whai wāhi mai ana i te putanga ako me ngā whenū: Te Tau me Te Taurangi, Te Ine me Te Āhuahanga, me Te Tauanga.

- 5 Mā Te Mana Tohu Mātauranga o Aotearoa (NZQA) te aromatawai o tēnei paerewa e whakarite me te māka. Ko ngā huarahi whakaatu taunakitanga, e whai ake nei:
- He kohinga taunakitanga ka puta i ngā marautanga katoa i te roanga o te tau (he Kete Manarua).
 - He Aromatawai Arowhānui, he mea whakarite e NZQA:
 - He aromatawai wā-here
 - He kaupapa whānui.
- 6 Ka taea te whakamahi tātaitai mai i te rārangi tātaitai kua whakamanahia e NZQA.
- 7 Ko *te ao o te ākongā* e hāngai atu ana ki te akoranga, ki te ahurea, ki te pāpori, ki te mahi, ki te kāinga o te ākongā.
- 8 Ko te *tikanga pāngarau*, ko ngā rautaki kua whakamahia e te ākongā te whakaoti rapanga.
- 9 He kupu taka

aronga	meaning, focus
ahurea pāpori	socio economic
akoranga tapua	significant features
pāheko	operations
pūāhua	situation
urupare	reply, response
tukanga	process
tukutuku ako	learning matrix
taurangi	variable
whaitake	reasonable
whakamahi	apply
whakakaupapa	contextualise
whakaoti rapanga	solve problem
whānuitanga	range
whakairo whānui	big ideas

- 10 Ngā rauemi

Paekupu – <https://paekupu.co.nz/>.

Te Taura Whiri i te Reo Māori (n.d.) *Te Taura Whiri i te Reo Māori Guidelines for Māori Language Orthography*.

<https://www.tetaurawhiri.govt.nz/assets/Uploads/Corporate-docs/Orthographic-conventions/58e52e80e9/Guidelines-for-Maori-Language-Orthography.pdf>.

Te Tāhuhu o te Mātauranga. (2013). *Te Marautanga o Aotearoa*. Te Poutaki Kōrero. (wh. 24-36).

Putanga ako me ngā paearu mahi

Putanga ako 1

Te whakamahi pāngarau hei whakaoti rapanga o te ao o te ākongā.

Paearu mahi

- 1.1 Te whakakaupapa i ngā pūāhua ki ngā tikanga pāngarau.
- Whānuitanga Ko te whiriwhiri i te pāheko, i te whakaahuahanga, i te taurangi, i te tikanga rānei hei whakaoti rapanga.
- 1.2 Te whakamahi i ngā tikanga pāngarau e tika ana ki ngā pūāhua.
- Whānuitanga Ko te whakamahi i ngā tikanga pāngarau e hāngai pū ana ki ngā whakaaro whānui, ki ngā pūāhua hei whakaoti rapanga
- 1.3 Te whakamāori i te whaitake o ngā urupare pāngarau ki ngā pūāhua.
- Whānuitanga Ko te whakamāori i ngā whakaotinga, i ngā putanga, i ngā aronga ki te pūāhua.

Rā arotake	31 Tīhema 2026
-------------------	----------------

Kōrero arotake me te rā whakamutunga mō te aromatawai o ngā putanga i tautuku

Hātepe	Putanga	Rā whakaputa	Rā whakamutunga mō te aromatawai
Rēhītatanga	1	18 Hune 2021	31 Tīhema 2024
Arotakenga	2	30 Nōema 2023	N/A

Ko te tohutoro ki ngā Whakaritenga i te Whakamanatanga me te Whakaōritenga (CMR)	0233
---	------

Ka taea te tiki atu te CMR nei mai i te ipurangi
<http://www.nzqa.govt.nz/framework/search/index.do>.

He kōrero mo tēnei paerewa

Mehemea he whakaaro, he āwangawanga ōu mō te paerewa nei, tēnā koa whakapā mai ki te Tāhuhu o te Mātauranga (Ministry of Education)
enquiries.national@education.govt.nz).

Tautuhinga Aromatawai Ā-Waho 2024

Te Paerewa Paetae

Te Ingoa

Te Marautanga

Ngā Whiwhinga

Te Tukanga Aromatawai

Te Wā Tuku Aromatawai

32412

Te whakamahi pāngarau hei whakaoti rapanga o te ao o te ākonga

Te Marautanga o Aotearoa

E 10

He Kete Manarua

1 o Oketopa 2024 ki te 30 o Oketopa 2024

Kete Manarua

Kete - ko te kete i pū mai i te pā harakeke me tōna whakapapa.

Manarua – e rua ōna mana. Tuatahi, ko te mana o ngā taonga ka kohikohia me ngā mahi huhua ka whakatutukihia e te ākonga. Tuarua, ko te mana o te ākonga, ko tōna whānau, hapū, me tōna iwi hoki, ko tōna ake mana motuhake tonu.

He tāpaetanga ā-matihiko te āhua o te KETE MANARUA ka tukuna mai e te kura, ā, he kōpaki, he kiriata, he kōrero ā-waha, he rauata, he tuhinga, he pūrongo, he whakaaturanga, he rātaka, he mahi rangahau aha atu aha atu.

Te Whakatakotoranga Aromatawai

He kohinga mahi, taunaki rānei nā te ākonga i whakaoti i te roanga ake o te tau hei whakatutuki i ngā Whānuitanga o ngā Paearu Mahi me te Putanga ako, ki konei te ākonga e eke ai i te Paerewa.

He Tūmahi Aromatawai e ārahi ana i te ākonga ki te whakatutuki i ngā Whānuitanga o ngā Paearu mahi. E whakaatu ana te Kete Manarua i t/ētahi taurira hei kōwhiringa mā te pouako. Ka whakamahia rānei, he mahi whakawai rānei, ka whakarite Tūmahi Aromatawai anō rānei, kei te pouako te tikanga.

Kia whakamahi pāngarau hei whakaoti rapanga o te ao o te ākonga, ā, ka whakakaupapa i ngā pūāhua, ka whakamahi i ngā tikanga pāngarau, ka whakamāori hoki i te whaitake o ngā urupare pāngarau ki ngā pūāhua.

E whai ake nei ko ngā Tūmahi Aromatawai i te Kete Manarua (Pouako), he tauira hei kōwhiringa mā te pouako, heoi, ki te whakarite Tūmahi Aromatawai kē te pouako tērā pea he rautaki aromatawai kē āna, hei tauira; he kōrero ā-waha, he kauwhau, he whakaaturanga.

Ko te 'Haerenga o te kura ki ngā whakataetae kapa haka ā motu mō ngā kura tuarua' te kaupapa matua, ā, e rima ngā horopaki me ōna ngohe i tēnei Tūmahi Aromatawai hei whakatutuki mā te ākongā:

1. Ngā tauira kākahu

E rua ngā mahi o tēnei ngohe; He mahi rangahau, he mahi tā, he mahi whakatau tauira, he whakamārama whakaaro me te tautuhi tukanga/āhuatanga pāngarau.

2. Ngā utu o te haerenga

E rua ngā mahi o tēnei ngohe; he mahi whiriwhiri, he mahi whakatau, he mahi tātai hei whakatau i te whakatutu.

3. Te kōhi pūtea mā te tunu pihikete

E rua ngā mahi o tēnei ngohe hei whakamātau pūkenga; he mahi rangahau, he mahi whakarea inenga me ngā tukanga pāngarau Ine me te Pāngarau whakahāngai.

4. Kapa haka me ngā ahunga nekehanga

Kotahi te mahi o tēnei ngohe, ko te whakatau, ko te whakaatu tātai ahunga me ngā tukanga pāngarau Te Wāhi me te Ahunga.

5. Kapa Haka me ngā tauanga kapa haka

E rua ngā mahi o tēnei ngohe hei whakakapi i te kaupapa kapa haka.

Ko te tuatahi, he tuhi i ngā momo pātai: whakatairite, pānga, tūhura, whakarāpopoto, ko te tūhura taurangi.

Ka mutu ko te rangahau i te whakautu o ngā pātai i whakaritea ki ngā tukanga pāngarau: tuhura tauanga, tātari raraunga me te whakatau i ngā kitenga o te tūhura raraunga.

Ngā Herenga Aromatawai

He mahi takitahi tēnei mahi nā te ākongā; me te whakatakoto taunakitanga mō te aromatawai ā-waho. He Kete Manarua ā-matihiko anake.

Kia tutuki pai te Kete Manarua ā-matihiko nei:

- me whakaputa hei PDF;
- me noho te rahinga tuari ki raro i te 5GB e pai ai te tārewatanga o ngā mahi ki te Online Digital Submission Portal;
- me tika te whakaraupapatanga o ngā mahi;
- me tika te whakatakotoranga o ngā mahi (kia kua e noho tītaha, huripoki rānei);
- me tāmaua te kiriata ki te tītohunga ataata, ā, kua rāhuitia te tukuhanga noa i te honongaitua me tana kotahi.

Te Motuhēhē o ngā mahi a ngā ākongā

Me pēhea e mōhio ai te motuhēhē a ngā mahi o ngā ākongā? He tukanga, he taunakitanga e mōhio ai nā te ākongā ake āna mahi aromatawai. Kia mataara ngā ākongā, ngā kaiako me te whānau hoki o te kura ki te motuhēhē o ngā mahi a ngā ākongā.

He māmā noa iho te tiki mahi a tangata kē, heoi, mā te mihi e whakaatu, e whakanui hoki i ngā tāngata me ngā puna āwhina i puta ai ngā mahi a ngā ākongā.

Hei tauira:

- He rerenga kupu poto e tohu ana i te pūtakenga mai o tētahi kōrero;
- He rārangi tohutoro i te whārangi whakamutunga o ngā mahi;
- He mihi ki te tangata | puna āwhina;
- Ngā momo puna āwhina, puna kōrero rānei:
 - » Kōrero ā-waha: he uiui kaumātua, pakeke, rangatira, mātanga rānei;
 - » Ngā pukapuka i whakaputa;
 - » Ngā pukapuka kāore i whakaputa;
 - » Wāhitau ipurangi.

He kōrero anō i ngā wāhitau ipurangi o te paetukutuku NZQA:

- [Authenticity: NZQA](#)
- [Myth 3 Managing authenticity: NZQA](#)
- [Authenticity of externally assessed standards: NZQA](#)
- [Guidance on the acceptable use of Artificial Intelligence: NZQA](#)

Te Tāpaetanga me te Hāponotanga

Hei te Wāhanga Tuatoru o te tau Kura a NZQA e tuku atu ai ngā tohutohu mō te tāpae mai i ngā taunakitanga o ngā Kete Manarua nei.

Kāore te Kete Manarua matihiko e whakahokia ki te ākongā. Mēnā he kōrero anō mō te tāpaetanga me te hāponotanga o te mahi, mā te tari o NZQA e pānui atu ki ngā kura.

Mēnā kei te hiahia āwhina ki te tuku atu i ngā tāpaenga Kete Manarua:

- Īmēra mai ki assessment.servicecentre@nzqa.govt.nz,
- waea rānei i te NZQA Contact Centre mā te nama 0800 687 296.

He Aratohu mā te Kaiako

He Whakatakinga

Ko ngā tūmahi aromatawai, kei te tuinga nei, he tauira noa, hei āwhina i te kaiako ki te whakaemi i ngā taunakitanga mō te paerewa Pāngarau 32412. Heoi anō, ki te hiahia te kaiako ki te whakamahi i āna ake tūmahi aromatawai, e pai ana.

Ka āhei ēnei tauira tūmahi te paku whakarerekē kia hāngai ki te ao o te ākongā, ki ētahi atu pūāhua, horopaki pāngarau e hāpai tonu ana i te Tukutuku Ako mō te Pāngarau.

He maha ngā huarahi e whakaatu ai te ākongā i ōna whakaaro Pāngarau. Kāore hoki e kapi i ēnei tauira tūmahi aromatawai te whānuitanga atu o ngā mea nui me ako ngā ākongā i tētahi hōtaka whakaako i te pāngarau.

Me whakakī e te kaiako te Pukauhi Kete Manarua mō ia kōpaki Kete Manarua ka tukua kia aromatawaia.

<https://www2.nzqa.govt.nz/ncea/subjects/select-subject/te-reo-matatini-me-te-pangarau/>

Kete Manarua

Te Whakataki: He mahi takitahi tēnei aromatawai e tika ana kia whakahaerengia i te akomanga. E rima ngā ngohe o tēnei aromatawai. Ko te take o ia ngohe, ko te whakamahi i te pāngarau me te tauanga hei whakaoti rapanga tātai mō ngā pūāhua i ngā horopaki Māori.

Ko ngā ngohe katoa e hāngai ana ki tētahi kaupapa matua. Kua whakarite tō kura kia haere atu koutou ki ngā whakataetae kapa haka ā motu mō ngā kura tuarua.

Te Ngohe 1: Ngā tauira kākahu

Te Ngohe 2: Ngā utu o te haerenga

Te Ngohe 3: Te Tunu Pihikete

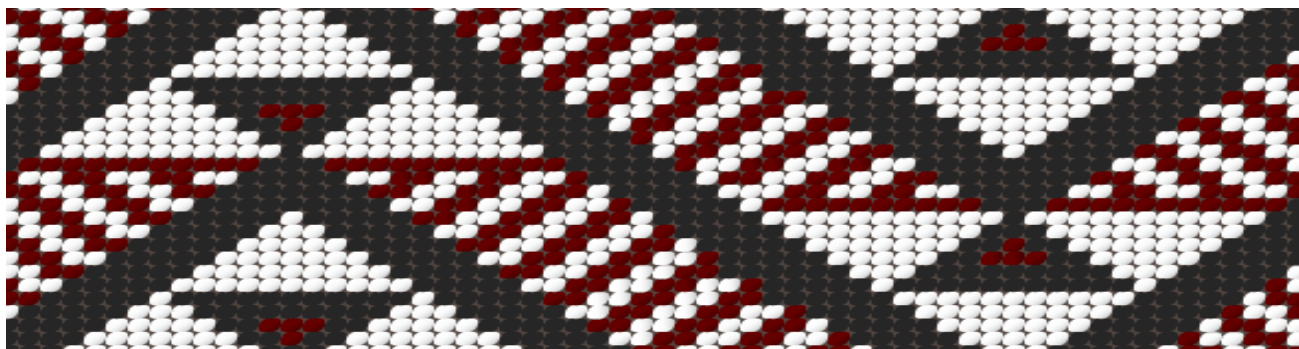
Te Ngohe 4: Ngā ahunga nekehanga

Te Ngohe 5: Ngā tauanga kapa haka

Ko ngā pūmanawa rorohiko pērā i te Excel, i te Word, me ngā pūmanawa rorohiko hoahoa, ngā mea pai hei whakaatu mai i ngā mahi a te ākongā. Ka āhei rānei te whakamahi i ngā pepa whai rārangi, i ngā pepa tukutuku rānei hei waihanga i ngā taunakitanga mō te kōpaki

Tūmahi Aromatawai

Te Ngohe 1: Ngā tauira kākahu



Kahutoi Te Kanawa, 'Māori weaving and tukutuku – te raranga me te whatu - Tāniko and tukutuku',

Te Horopaki:

Kua whakatauhia e ngā kaiwhakahaere kia tuituia ētahi kākahu hou mō te kapa haka o tō kura. Kei te hiahia rātou i tētahi pari hou, i tētahi tātua hou hoki. Ko tāu mahi i tēnei ngohe, he waihanga i tētahi tauira pari, i tētahi tauira tātua rānei mō tēnei kapa haka.

Ngā Rauemi

- He pepa tukutuku
- Ētahi kohinga whakaahua o ngā momo kākahu kapa haka

Hei mahi 1:

1. Rangahaua ētahi momo tauira kākahu ā-kapa, hei manawakura mōu.
2. Tāngia ētahi tauira hukihuki o tētahi pari, o tētahi tātua rānei - Whakaarohia te tikanga o ngā tae, ngā tikanga o ngā tauira kua kōwhiritia, tae atu ki ngā kōrero kei tua o te tauira.
3. Āta whakatauhia te tauira whakamutunga e hiahiatia ana e koe hei pari, hei tātua rānei mōu.
4. Whakamāramatia mai tāu tauira me tōna hononga ki tō kura.
5. Tautuhia ngā āhuatanga pāngarau o roto mai o tāu tauira, ā, hei tauira; te panonitanga, te inenga, te tau.

Tukanga Pāngarau: Te Panonitanga me te Inenga

- *Te whakaata*
- *Te nekehanga*
- *Te hurihanga*
- *Te whakarahi*
- *Te paenga*
- *Te horahanga*
- *Te ōwehenga*

Hei mahi 2:

Kua whakaaro ake ngā kaiwhakahaere kia tiro atu ki ētahi piupiu hou hoki mō rātou. Ko tāu mahi i tēnei ngohe, he waihanga i tētahi tauira mō ngā piupiu.

1. Rangahaua ngā momo tauira piupiu hei manawakura mōu.
2. Tāngia mai tētahi tauira hukihuki.
3. Āta whakatauhia te tauira whakamutunga e hiahiatia ana e koe hei piupiu mō te kura
4. Inehia tō hope, ā, whakatauhia te rahi o te piupiu e tika ana mōu.
5. Whakaarohia te maha o ngā whenu e hiahiatia ana e te kairaranga kia eke ai te piupiu ki te rahi pai e tika ana.
6. Tāutuhia ngā inenga katoa o tāu tauira piupiu, arā, te roa, te whānui, me ngā wāhanga o te tauira.

Tukanga Pāngarau:

- *Te ine*
- *Te roa*
- *Te whānui*



Te Ngohe 2: Ngā utu o te haerenga



Te Horopaki:

Hei tēnei tau, ka tū te whakataetae Kapa Haka Kura Tuarua ki Whakatū. Kei te whakarite tō kura ki te kawē i ngā ākonga e 50 me ngā pakeke tokowaru. Ka rere atu ki Whakatū, ka moe atu mō ngā pō e 6. Ka rētihia ētahi wēne, ka noho ki tētahi hōtēra mō te wiki.

\$159 te utu mō tētahi wēne i ia rangi. Ka 15% te itinga iho o te utu ki te rētihia ngā wēne e whā, neke atu rānei. E \$99 te utu mō ia rūma, i ia pō. E āhei ana te tokowhā ki te moe ki te rūma kotahi. Kua whakaae te hōtēra kia 20% te itinga iho o te utu ki te neke atu i te 5 pō te roa o tō noho.

Ko te utu mō ngā kai kua whakaritea mō ia tangata, i ia rā, ko te \$10 mō te parakuihi, ko te \$15 mō te kai o te rānui, ko te \$25 mō ngā kai o te pō, me te \$10 mō ngā paramanawa.

Kua whakatauhia kia hokona atu ngā pihikete mō tētahi o ngā kohinga pūtea, ā, \$15 te utu mō ngā kai whakauru hei tunu i ngā pihikete tiakarete e 24, ā, \$12 te utu mō ngā kai whakauru hei tunu i ngā pihikete 'Brownie' e 20.

(Mā tō kaiako e tuku te utu o ngā rerenga atu i tō rohe ki Whakatū, o te hoki atu anō ki tō rohe me te utu o te kawē i ngā tueke, pēnei i ngā rakuraku, i ngā ipu kākahu me ngā taputapu haka.)

Ko tāu mahi, he tātai i te tapeke o te utu o te haerenga ki ngā whakataetae.

Whakaaturia ngā tātainga katoa.

Hei mahi 1

6. Whiriwhiria te utu mō te rerenga, mō ngā wēne, mō te hōtēra, me ngā kai mō te kapa.
7. Tātaihia te tapeke mō te haerenga nei.
8. He aha te utu mō ia tangata?

Tukanga Pāngarau:

- *Te tau.*

Hei mahi 2

7. Whakatauhia te utu mō ngā pihikete hei hoko atu mā koutou, kia pai ai te kohi pūtea.
8. Tātaingia te maha o ngā pihikete me hoko atu kia pai ai te kohi pūtea, me te hoko i ngā kai whakauru
9. Whiriwhiria te nui o te moni ka riro i a koe i muri i te hokonga atu o ngā pihikete.

Tukanga Pāngarau:

- *Te tau*
- *Te tauanga*

Te Ngohe 3: Te Tunu Pihikete



Te Horopaki

Kua tae ki te wā kia whakamātauria ō pūkenga tunu pihikete.

Hei Mahi 1:

1. Rangahaua ētahi tohutaka pihikete (tiakarete) hei tunu māu.
2. Kia kōwhiria e koutou ko ō hoa ako te tino tohutaka hei whakamahi mā koutou, whakareatia ngā inenga o te tohutaka ki te wāriu mō te maha e hoko atu ana e koutou.
3. Me tunu e koutou ko ō hoa ngā pihikete (tiakarete).

Te Tukanga Pāngarau:

- *Te ine*
- *Te pāngarau whakahāngai*

Hei Mahi 2:

1. Rangahaua tētahi tohutaka 'Brownie' hei tunu māu.
2. Kia kōwhiria e koutou ko ō hoa ako te tino tohutaka hei whakamahi mā koutou, whakareatia ngā inenga o te tohutaka ki te wāriu mō te maha e hoko atu ana e koutou.
3. Me tunu e koutou ko ō hoa ako ngā 'Brownie'.

Tukanga Pāngarau:

- *Te ine*
- *Te pāngarau whakahāngai*

Te Ngohe 4: Te Ahunga Nekehanga



I toa whakaihūwaka a Raukura ki te whakataetae kapa haka ā motu 2018.

Te Horopaki:

Hei whakarite i a koutou mō ngā whakataetae, waihangatia ētahi nekehanga, me ētāhiahunga mō te whakaeke. Kia auaha ngā whakaaro. Whakaarohia ngā nekehanga pai hei nekehanga ā-kapa. Whakaarohia te nui o te atāmira e kapi katoa ai te papa i ngā nekehanga. Tūhonoa ngā nekehanga ki ngā kupu o te waiata

Hei Mahi 1:

1. Whakamaheretia, ka tuhia ai ngā nekehanga me ngā ahunga e taea ana e te kapa. Whakaaturia mai hoki aua nekehanga, e pai ai ngā kaihaka te ako.
2. Tuhia, tāngia rānei ngā tātaitanga ahunga me ngā tātaitanga wāhi ka whakamahia mō te whakaeke.

Te Tukanga Pāngarau:

- *Te wāhi*
- *Te ahunga*

Te Ngohe 5: Ngā Tauanga Kapa Haka



Te Horopaki:

Hei whakakapi i te kaupapa nei, ka tūhurangia e koe ngā māka i puta i te whakataetae kapa haka. Mā te kaiako e tuku atu i ngā raraunga e hāngai ana ki te whakataetae, hei tūhura māu. (He raraunga whakarōpū rānei, he raraunga tau rānei.)

Hei Mahi 1:

1. Āta tirohia ngā raraunga, ka whakaaro ai ki ētahi pātai e rua hei tūhura māu. Ko te take o ngā pātai, ko te whakatairite i ngā raraunga o ētahi o ngā rōpū.
2. Tuhia, kia rua ngā pātai. He pātai whakatairite rānei, he pātai pānga rānei, he pātai tūhura rānei, he pātai whakarāpopoto rānei.
3. Mō ia pātai, me tuhi anō hoki:
 - te taurangi e tūhuratia ana
 - ngā rōpū raraunga e whakatairitea ana.

Whakaaturia āu pātai ki tō kaiako. Mēnā e tika ana te āhua o ngā pātai, ka wātea koe ki te tīmata i te mahi tuarua. Ki te kore e tika t/ētahi o ngā pātai, mā tō kaiako koe e paku āwhina.

Hei Mahi 2:

Te whai i ngā tikanga tūhuratanga tauanga hei whakaputa whakataunga e hāngai ana ki te pātai.

1. Kōwhiria tētahi o ngā pātai i oti ai i a koe i te mahi tuatahi, hei tūhura māu. *Te tātari i ngā raraunga e 2.*
2. Tuhia kia kotahi te kauwhata (kia nui ake rānei) e hāngai ana ki tāu pātai, hei whakaatu i ētahi āhuatanga rerekē o ngā raraunga.
3. Whakaaturia ngā tātaitanga tauanga e hāngai ana ki te tūhuratanga.
4. Whakamāramatia ngā whakatairitenga o tāu e kitea mai ana i ngā raraunga; pērā i te ia o ngā raraunga, i ngā tauira, i ngā āhuatanga kōhure, i te āhua o ngā raraunga.
5. Ki ōu whakaaro, he aha pea te painga o tēnei whakataetae ki ngā ākongā?
6. He aha ētahi o ngā tikanga Māori, o ngā uara Māori kei ngā whakataetae nei?

Te whakataunga

7. Tuhia he whakataunga hei whakarāpopoto i āu kitenga, i āu tūhuratanga.

Ngā taunakitanga a te ākongā:

- he ripanga Excel
- he whakarāpopototanga ki te taupānga Word
- me kuhu mai rānei ki konei he pepa whai rārangi.

Te Tukanga Pāngarau:

- *Te tuhura tauanga*
- *Te tātari raraunga*
- *Te whakatau i ngā kitenga o te tuhura raraunga*

Ngā Rauemi

[Akoranga Ripanga Rorohiko 1](#)

[Akoranga Ripanga Rorohiko 2](#)

[Akoranga Ripanga Rorohiko 3](#)

[Akoranga Ripanga Rorohiko 4](#)

MĀTĀPUNA

Kahutoi Te Kanawa, 'Māori weaving and tukutuku – te raranga me te whatu - Tāniko and tukutuku', Te Ara - the Encyclopedia of New Zealand, <http://www.TeAra.govt.nz/en/diagram/43485/taniko-designs> (accessed 1 March 2024)

Raukura win national kapa haka competition. Rotorua Daily Post. https://www.nzherald.co.nz/rotorua-daily-post/news/raukura-win-national-kapa-haka-competition/BACMV5TT42G3AGH63S7GALQF2A/?c_id=1503438&objectid=11683203

TE PUKAUHI KETE MANARUA 1

Paerewa 32412: Te whakamahi pāngarau hei whakaoti rapanga o te ao o te ākongā

Hei Tairā: Me mātua piri atu tēnei pukauhi ki tēnā, ki tēnā kōpaki taunakitanga ka tukua kia aromatawaia.

Whiwhinga: 10

Ākongā: _____ Kura/Whare Paetoru: _____

TŪMAHI AROMATAWAI		E noho mai ana ki ia tūmahi he taunakitanga o ēnei e whai ake nei? Āe rānei (tuhia te Āe/✓), kāore rānei (tuhia te Kāo/X)?		
	Āta tautohua: • te tūmahi i puta ake ai te taunakitanga • ngā whakaaro pāngarau e ea ana i te tūmahi	Te whakakaupapa i ngā pūāhua ki ngā tikanga pāngarau.	Te whakamahi i ngā tikanga pāngarau e tika ana ki ngā pūāhua.	Te whakamāori i te whaitake o ngā urupare pāngarau ki ngā pūāhua.
Hei Tairā				
1				
2				
3				
4				
5				

TE RĀRANGI TIROTIRO MŌ NGĀ TAUNAKITANGA KETE MANARUA

Paerewa 32412: Te whakamahi pāngarau hei whakaoti rapanga o te ao o te ākonga

		Whakaaro Whānui			
Whakaaro Whānui:	Ngā Tukanga	Pāngarau	Ahurea-Pāpori	Te Reo Matatini o te Pāngarau	✓/X te whārangi, te tūmahi
Paearu mahi 1.1	Te whakakaupapa i ngā pūāhua ki ngā tikanga pāngarau.				
Whānuitanga	Ko te whiriwhiri i te pāheko, i te whakaahuahanga, i te taurangi, i te tikanga rānei hei whakaoti rapanga.				
Paearu mahi 1.2	Te whakamahi i ngā tikanga pāngarau e tika ana ki ngā pūāhua.				
Whānuitanga	Ko te whakamahi i ngā tikanga pāngarau e hāngai pū ana ki ngā whakaaro whānui, ki ngā pūāhua hei whakaoti rapanga				
Paearu mahi 1.3	Te whakamāori i te whaitake o ngā urupare pāngarau ki ngā pūāhua.				
Whānuitanga	Ko te whakamāori i ngā whakaotinga, i ngā putanga, i ngā aronga ki te pūāhua.				