

## TE PUKAPUKA POUAKO **TE PĀNGARAU**



### TE KAUPAE 1 (NZQCF)

32412 | Te whakamahi pāngarau hei whakaoti rapanga o te ao o te ākongā  
(Ngā Whiwhinga: E 10)

Te Rā Tuku Aromatawai ā-waho: Te Wāhanga 4: Te 29 o Oketopa, 2025

# Te Whārangi Ihirangi

## 32412 Te whakamahi pāngarau hei whakaoti rapanga o te ao o te ākongā

He Kete Manarua .....	4
He Kupu Whakamārama.....	4
Ngā Tūmahī Aromatawai ā-waho.....	5
Te Pūāhua.....	5
Te Tau.....	6
Te Taurangi .....	7
Te Ine.....	8
Te Wāhi me te Ahunga.....	9
Te Paerewa.....	14
Te Tautuhinga Aromatawai ā-Waho .....	17
Te Whakatakotoranga Aromatawai ā-waho.....	17
Ngā Herenga Aromatawai ā-waho .....	18
Te Motuhēhē o ngā mahi o ngā ākongā .....	18
Te Tāpaetanga me te Hāponotanga.....	19
Mahere Aromatawai ā-waho.....	20

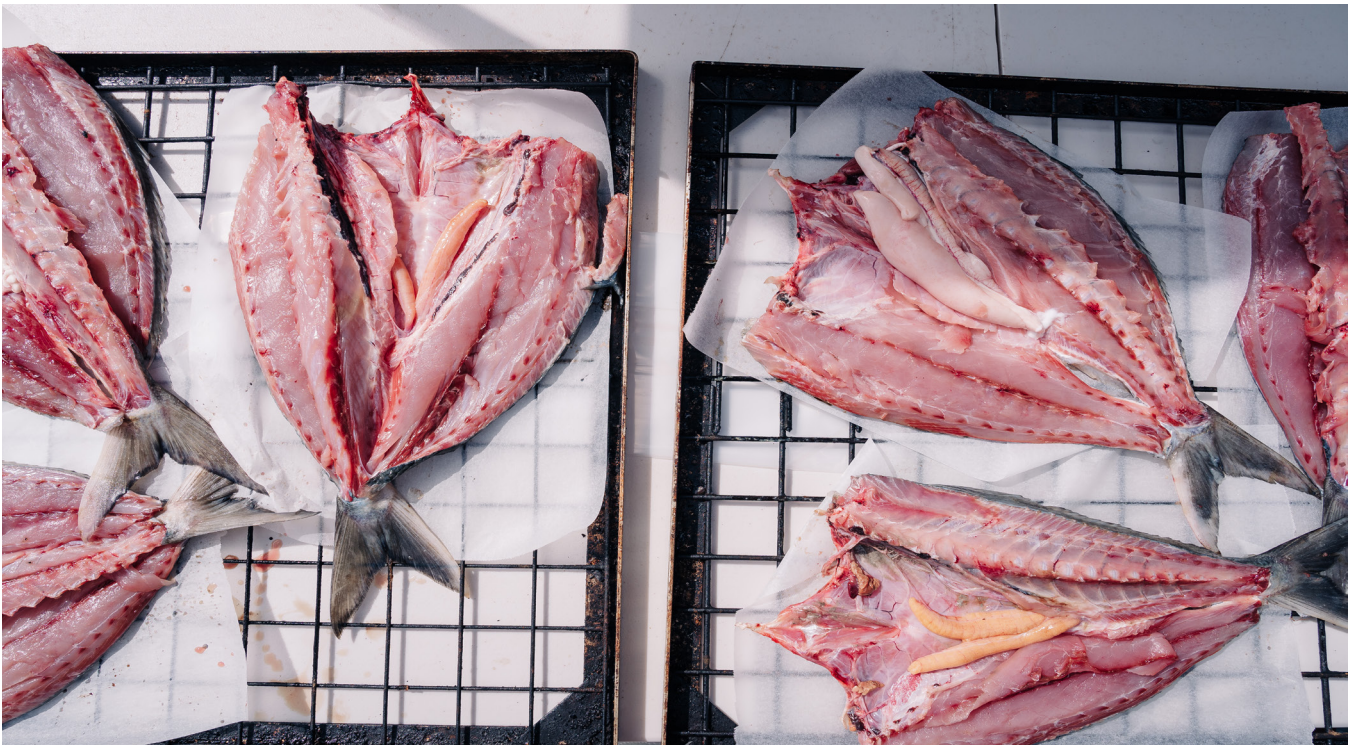


Photo Credit: Ngahuia Photography



# TE PĀNGARAU

32412 Te whakamahi pāngarau hei whakaoti rapanga o te ao o te ākongā

(Te Kaupae 1, Ngā Whiwhinga: E 10)

<b>Putanga ako 1: Te whakamahi pāngarau hei whakaoti rapanga o te ao o te ākongā.</b>	
<b>Ngā paearu mahi</b>	<b>Ngā whānuitanga</b>
1.1 Te whakakaupapa i ngā pūāhua ki ngā tikanga pāngarau.	ko te whiriwhiri i te pāheko, i te whakaahuahanga, i te taurangi, i te tikanga rānei hei whakaoti rapanga.
1.2 Te whakamahi i ngā tikanga pāngarau e tika ana ki ngā pūāhua.	Ko te whakamahi i ngā tikanga pāngarau e hāngai pū ana ki ngā whakaaro whānui, ki ngā pūāhua hei whakaoti rapanga
1.3 Te whakamāori i te whitake o ngā urupare pāngarau ki ngā pūāhua.	Ko te whakamāori i ngā whakaotinga, i ngā putanga, i ngā aronga ki te pūāhua.

# He Kete Manarua

Ko te **KETE** i pū mai i te pā harakeke, ā, he whakapapa tōna.

He **MANA** tōna, ā, e **RUA** hoki ōna āhuetanga. Ko ngā taonga tuku iho ka kohikohia e te ākonga, ka tahi. Ka rua, ko te whakapiki i te mana motuhake o te ākonga, o ōna hapū, o ōna iwi hoki.

He tāpaetanga ā-matihiko te āhua o te KETE MANARUA ka tukuna mai e te kura, ā, he kōpaki, he kiriata, he kōrero ā-waha, he rauata, he tuhinga, he pūrongo, he whakaaturanga, he rātaka, he mahi rangahau, he aha atu, he aha atu ngā momo tāpaetanga.

## He Kupu Whakamārama

Ko ngā Tūmahi Aromatawai ā-waho e rua e whai ake nei hei kōwhiringa mā te pouako me te ākonga:

### 1. Tāmīro

E āhei ana te ākonga ki te hono i ana taunakitanga o Te Pāngarau 32412 ki ana taunakitanga o Te Reo Matatini 32415 hei Kete Manarua ki roto i te kaupapa kotahi. Ka mutu ka whakamahia ngā Tūmahi Aromatawai ā-waho e rua.

Heoi, kia mataara, ka tuku mai ki a NZQA ko te Kete Manarua kotahi (mō te ākonga kotahi) ki ngā Paerewa e rua.

### 2. Te Pāngarau

Ki te hiahia rānei te ākonga ki te eke i te Paerewa o Te Pāngarau 32412 anake ka whakamahi i te Tūmahi Aromatawai ā-waho o Te Pāngarau i te taha māui.



# Ngā Tūmahi Aromatawai ā-waho

## Te Pāngarau | Te Paerewa 32412

Te whakamahi Pāngarau hei whakaoti rapanga nō te ao o te ākongā.  
E 10 ngā whiwhinga

## Te Reo Whakaputa | Te Paerewa 32415

Ka whakamahi i te reo kia tutuki ai tētahi pūtakenga whakawhiti  
kōrero, ā-waha, ā-tuhituhi hoki.  
E 5 ngā whiwhinga

## Te Pūāhua

Koia nei te āhuatanga, te mahi, te kaupapa rānei hei horopaki mō te mahi pāngarau, mō te mahi reo rānei. He kaupapa tēnei e whai wāhi ana te ākongā i roto i te kura, i te marae, i te hāpori, i te whānau, i te hāhi, i te karapu tākaro, i te aha atu, i te aha atu; arā, ko:

- te manaaki manuhiri
- te mahi kai
- te mahi māra kai
- te mahi moni mā tētahi kaupapa
- te hanga rawa, me
- te huhua o ngā mahi kē atu.

Ko te tikanga, he mahi tēnei ka mahia i roto i ō tātau whānau, i ngā kura, i ngā marae, i te hāpori anō hoki. Ehara i te mahi hou, engari e hōhonu ake ana te aro ki ngā wāhanga iti o te pūāhua.

## Hei Mahi (1.1)

- Ka whakamārama i te take i kōwhiria ai tēnei mahi, i ngā wāhi me ngā wā kua mahia i roto i te hāpori, i te kura, i te marae i mua ake. Ka whai whakaaro ki te kaupapa, ki te wāhi, ki te wā, ki ngā wero, ki ngā piki, ki ngā heke, ki ngā tāngata me ngā hua i puta i te mutunga:

Te kōrero, te tuhituhi, te tuhinga motukore, te kiriata poto...

## Te Tau

### Te Taumata 4

1. Ngā meka whakawehe
2. Te whakaawhiwhi tauoti
3. Ka mōhio ki ngā hautau, ki ngā tau ā-ira, ki ngā ōrau me ngā ōwehenga māmā.

### Te Taumata 5

1. Ka kōwhiri, ka whakamārama i te rautaki e tino whaihua ana hei whakaoti rapanga e whai wāhi mai ana te tau tōpū, te hautau, te tau ā-ira, te ōrau, te ōwehenga, me te pāpātanga.
2. Ka mārama ki te whitake o te otinga o tētahi rapanga.

### Hei Mahi (1.1, 1.2, 1.3)

- Ka kōhi i te maha me te utu o ngā rawa me ngā ratonga e hiahiatia ana, ka whakatakotoria ai ki tētahi papatau kia mārama ai: Te momo rawa (hei pikitia)?
  - » Te utu
  - » Te nui e ea ai te mahi
  - » He kōrero whakamārama (pēnei i te tikanga e whāia ana) mehemea he wāhanga i tētahi pāketē e hiahiatia ana
  - » Te tapeke o te utu mō taua rawa (he whakamārama anō hoki mō te pānga ki te mahi)
  - » Te wāhi ka kitea te rawa.

## Te Taurangi

### Te Taumata 4

1. Ka whakaatu pānga rārangi mā te whārite whai taurangi (ka whakaoti hoki i te whārite):
  - mā te ture,
  - mā te kauwhata.

### Te Taumata 5

- Ka tuhi whārite rārangi ki te whakatauirā pūāhua whaitake, ka whakaoti hoki i te whārite.
- Ka whakawhānui i ngā tikanga o roto i ngā rautaki tau hei tūāpapa mō ngā tikanga taurangi.

### Hei Mahi

- Ka whakaputa i tētahi kauwhata/ture rārangi mai i ngā hua ka puta, i te maha o ngā taurangi motuhake “x” me te tau pūmau ( $y = mx + c$ ).
- Ka whakahoropaki i te ture ki te pūāhua (te huamoni = te utu x ngā rawa ka hokona – te nama mō ngā rawa)
- Ka tāngia ki te kauwhata me te whakaingoa i ngā tuaka.
- Ka whakamārama i ngā āhuetanga o te kauwhata, pēnei i:
  - » Te rōnaki (m)
  - » Te tau pūmau
  - » Te wāriu o “x” kia ea ai ngā nama
- Ka whakaputa i tētahi matapae mā te titiro ki te kauwhata.
- Ka whakamahi i te ture hei tātai i tērā i matapaetia rā mā te titiro ki te kauwhata.
- Ka whakamahi i te ture kia puta ai ētahi matapae rerekē.
- Ka whakamārama i ētahi āhuetanga ka whai pānga ki te hua mā te titiro ki te pono rānei o te horopaki.

## Te Pāngarau | Te Paerewa 32412

## Te Reo Whakaputa | Te Paerewa 32415

### Te Ine

#### Te Taumata 5

1. Ka whakaoti rapanga whaitake:
  - ka kōwhiri, ka whakamahi i ngā waeine, i ngā taputapu me ngā āwhata e hāngai ana mō te roa, mō te horahanga, mō te rōrahi (te kītanga), mō te papatipu (te taumaha), mō te paemahana, mō te koki me te wā;
  - ka whakawhitiwhiti waeine.
2. Ka whakaputa, ka whakamahi hoki i ngā ture hei tātai i te paenga me te horahanga o tētahi taparau.
3. Ka whakaputa, ka whakamahi hoki i ngā ture hei tātai i te rōrahi o tētahi pōro.
4. Ka mārama ki te whaitake o tētahi inenga.

#### Hei Mahi

- Ka tātai i te rōrahi o t/ētahi taputapu, o t/ētahi rawa ka whakamahia, ka whakaputaina rānei.
  - » Ka tātai i te horahanga/rōrahi o tētahi taputapu, pēnei i te paetunu keke porohita, i te keke porohita rānei.
  - » Ka tātai i te papatipu o tētahi wāhanga o te rawa, o te kai rānei mā te takitahi, mā te tokoiti rānei. Ka whakamahia tēnei hei tātainga e pā ana ki te katoa.
  - » Ka tātai i te rōrahi ka puritia ki roto i tētahi taputapu, pēnei i te kapu.
- Ka tātai i te horahanga o te kāri, o te pepa rānei hei waihanga i tētahi raumata.
- Ka whakamahi i ngā otinga o te ine hei tātai i te maha me te utu o t/ētahi rawa.



## Te Pāngarau | Te Paerewa 32412

### Te Wāhi me te Ahunga

#### Te Taumata 4

Ka whakaatu, ka whakamārama, ka whakamahi i te wāhi noho (te taunga) o tētahi mea, me te ahunga; arā, ko:

- ngā tōpito
- ngā koki o te kāpehu
- ngā āhuetanga o te taiao
- te tukutuku (te takirua raupapa)
- te mahere.

#### Te Taumata 5

Ka tuhi, ka whakamārama i ngā taunga me ngā rārangi ki tētahi papa tukutuku mā te whakamahi i:

- ngā momo āwhata
- ngā tōpito
- ngā inenga koki o te kāpehu
- ngā momo mahere.

#### Hei Mahi

Ka tā i tētahi mahere e whakaatu ana i ngā mahi, i ngā toa hokohoko, i ngā whakaaturanga ki te kura, i ngā marae, i ngā wāhi mahi me te whakamahi i ngā ahunga, i ngā āhuetanga o te taiao, i te tukutuku rānei.

## Te Reo Whakaputa | Te Paerewa 32415

#### Hei Mahi (1.2) (1.4)

Ka tā i tētahi pānui whakaata hei whakatairanga i te kaupapa e whakahaeretia ana.

## Te Pāngarau | Te Paerewa 32412

### Te Hanga

#### Te Taumata 5

1. Ka tuhi i tētahi raumata tōtika hei waihanga matarau māmā.
2. Ka tuhi i ngā momo hoahoa hei whakaatu āhua ahu-toru.
3. Ka whakamahi ōwehenga pākoki me te ture a Pythagoras ki te whakaoti rapanga e whai wāhi mai ana te tapatoru hāngai.

#### Hei Mahi

- Ka tā matarau ahu-rua hei hanga pouaka ahu-toru hei pupuri i t/ ētahi o ngā rawa.
- Ka tā i te tauira ahu-toru.

#### Te Ahunga

- Ka whakamahi i te ture pākoki, i te ture a Pythagoras rānei hei whakaatu i te ahunga me te roa – te tawhiti i tētahi wāhi ki tētahi atu.
  - » He māketete i te kura.
  - » He haerenga mā te whenua.
  - » Ko te whakatakoto, ko te whakatū rawa rānei.

## Te Reo Whakaputa | Te Paerewa 32415

### Hei Mahi (1.3) (1.4)

Ka whakaputa i tētahi pānui kōrero hei whakatairanga i te pūāhua, i te kaupapa e arongia ana mā te ara o te pāhopori, mā te tū rānei ki mua i te minenga me te hāngai o te reo ki taua minenga anō.

## Te Pāngarau | Te Paerewa 32412

### Te Tauanga

#### Te Taumata 4

Ka whai i ngā tikanga o te tūhuratanga tauanga ki te whakamahere, ki te whakatutuki tirohanga tauanga, ki te whakamātau tauanga hoki:

- ka whakatakoto i ngā pātai, i ngā tāpaetanga kōrero rānei;
- ka whakatau i ngā taurangi hei ine me ngā waeine e hāngai ana;
- ka whakatau i te tukanga kohikohi raraunga;
- ka kohikohi raraunga;
- ka wehewehe raraunga;
- ka āta whakaaro ki ngā take e taurangi ai ngā raraunga;
- ka kōwhiri i ngā whakaari raraunga e whaitake ana, me te wehewehe anō i ngā raraunga e kitea ai ngā tauira, ngā ia, ngā pānga me ngā taurangitanga o ngā raraunga whakarōpū matatini;
- ka whakatairite i ngā tīpako me te hono anō o ngā tīpako ki ngā taupori, mā te whakamahi i ngā inenga wēanga me te hora o ngā raraunga;
- ka whakaputa pūrongo mō te pātai i tūhuratia ai;
- ka mārama ki ngā tikanga matatika e hāngai ana.

#### Te Taumata 5

Ka arotake i ngā tukanga tauanga o tētahi tūhuratanga:

- te tukanga whai tīpako;
- te whiriwhiri i ngā inenga wēanga me te hora o ngā raraunga;
- te tika o ngā kōrero ka puta i te tūhuratanga.

## Te Reo Whakaputa | Te Paerewa 32415

## Te Tauanga

### Hei Mahi

I roto i ngā mahi ā mohoa nei, ka kohi i ngā raraunga pēnei i te roa, i te whānui, me te papatipu o ngā rīwai, o ngā hēki, o tētahi mea rānei i tunua pēnei i te keke, i te parāoa parai, i te panekeke, i te kapu o te huawhenua.

- Ka whakatakoto i tō pātai rangahau.
- Ka whakamārama i te tikanga kohi me te ine.
- Ka kohi i ō raraunga.
- Ka whakatakoto i ngā raraunga.
- Ka whakaatu i te raraunga mā te kauwhata/papatau.
- Ka whakaputa i ngā momo inenga whaitake, pēnei i:
  - » te tau mōkito
  - » te hauwhā raro
  - » te tauwaenga
  - » te tau toharite
  - » te hauwhā runga
  - » te tau mōrahi
- Ka whakamārama i ngā kitenga.
- Ka whakaputa i tētahi whakatau e hāngai ana ki te pātai rangahau

## Te Pāngarau | Te Paerewa 32412

## Te Reo Whakaputa | Te Paerewa 32415

### Te Tūponotanga

- Ka tūhura pūāhua tūponotanga e papa-tahi ana, e papa-maha ana hoki:
  - » ka whakamahi i ngā hautau, i ngā ōwehenga hoki ki te matapae, ki te whakamārama i ngā tuari raraunga ka puta i tētahi whakamātau tūponotanga;
  - » ka whakatau i te whitake rānei o te taurangi e kitea mai ana i ngā raraunga o tētahi whakamātau tūponotanga.

### Hei Mahi

- Ka tirohia ngā raraunga me ngā hua o te tūhuratanga tauanga. Hei tauira, ka tātai i te tūponotanga ka noho te raraunga ki waenga i te inenga mōkito me te inenga mōrahi.
- Ka whai wāhi atu ēnei tūponotanga ki ngā āhuatanga o te mahi, o te hapori, o te wā, me te huarere.

# Te Paerewa

<b>Ingoa</b>	<b>Te whakamahi pāngarau hei whakaoti rapanga o te ao o te ākonga</b>		
<b>Kaupae</b>	<b>1</b>	<b>Whiwhinga</b>	<b>10</b>

<b>Whāinga</b>	Ko ngā ākonga kua whakawhiwhia ki te paerewa paetae nei, e āhei ana ki te whakamahi pāngarau hei whakaoti rapanga o te ao o te ākonga.
----------------	--

<b>Whakaraupapa</b>	Core Generic > Work and Study Skills
---------------------	--------------------------------------

<b>Ngā tohu</b>	Paetae
-----------------	--------

## Kōrero whakamārama

- 1 Ko tēnei paerewa, nō te huinga paerewa Reo Matatini me te Pāngarau me mātua kawē mō te New Zealand Certificate of Achievement (NCEA). Ka aromātai tahi tēnei paerewa, te paerewa 32414, *Ka whakamahi i te reo kia tutuki ai tētahi pūtakenga whakawhiti kōrero, tuhituhi hoki* me te paerewa 32413 *Ka mārama, ka tautohu i ngā whakaaro matua o tētahi reo ā-waha, o tētahi reo ā-tā hoki* i ngā pūkenga tūāpapa o te reo matatini me te pāngarau e whai wāhi tonu ai te ākonga ki te ako, ki te mahi, me ērā atu āhuetanga o tōna oranga.
- 2 Mō tēnei paerewa, ko te pāngarau te āheinga o te ākonga ki te whai, ki te whakamahi, ki te whakamāori, te whakawhitiwhiti whakaaro pāngarau, me te reo matatini o te pāngarau hoki e taea ai e ngā ākonga te uru atu ki ētahi atu akoranga, whakawhanake i ngā pūkenga nui o te ao whānui, me te uru atu ki ngā mahi me o rātou hāpori. Kei roto hoki i tēnei ko te mārama hoki ki ngā āhuetanga o te ahurea-pāpori.
- 3 E hono ana tēnei paerewa ki ngā tukanga me ngā akoranga tāpua o te Tukutuku Ako – Pāngarau, kei te whārangi ipurangi [ncea.education.govt.nz](http://ncea.education.govt.nz).

E hono ana hoki ki ngā anga e toru e whai ake nei:

- Ki te mutunga o taumata 4 me te timatatanga o taumata 5 o te Marautanga Pāngarau.
- Ki te kaupae 5 o ngā Learning Progressions for Adult Numeracy (LPAN)
- Ki ngā whāinga o te Tīrewa Ako Pāngarau.

- 4 Me whakaatu māramatanga ngā ākonga ki ngā ngohe aromatawai e whai wāhi mai ana i te putanga ako me ngā whenū: Te Tau me Te Taurangi, Te Ine me Te Āhuahanga, me Te Tauanga.

- 5 Mā Te Mana Tohu Mātauranga o Aotearoa (NZQA) te aromatawai o tēnei paerewa e whakarite me te māka. Ko ngā huarahi whakaatu taunakitanga, e whai ake nei:
- He kohinga taunakitanga ka puta i ngā marautanga katoa i te roanga o te tau (he Kete Manarua).
  - He Aromatawai Arowhānui, he mea whakarite e NZQA:
    - He aromatawai wā-here
    - He kaupapa whānui.
- 6 Ka taea te whakamahi tātaitai mai i te rārangi tātaitai kua whakamanahia e NZQA.
- 7 Ko *te ao o te ākongā* e hāngai atu ana ki te akoranga, ki te ahurea, ki te pāpori, ki te mahi, ki te kāinga o te ākongā.
- 8 Ko te *tikanga pāngarau*, ko ngā rautaki kua whakamahia e te ākongā te whakaoti rapanga.
- 9 He kupu taka

aronga	meaning, focus
ahurea pāpori	socio economic
akoranga tapua	significant features
pāheko	operations
pūāhua	situation
urupare	reply, response
tukanga	process
tukutuku ako	learning matrix
taurangi	variable
whaitake	reasonable
whakamahi	apply
whakakaupapa	contextualise
whakaoti rapanga	solve problem
whānuitanga	range
whakairo whānui	big ideas

- 10 Ngā rauemi

Paekupu – <https://paekupu.co.nz/>.

Te Taura Whiri i te Reo Māori (n.d.) *Te Taura Whiri i te Reo Māori Guidelines for Māori Language Orthography*.

<https://www.tetaurawhiri.govt.nz/assets/Uploads/Corporate-docs/Orthographic-conventions/58e52e80e9/Guidelines-for-Maori-Language-Orthography.pdf>.

Te Tāhuhu o te Mātauranga. (2013). *Te Marautanga o Aotearoa*. Te Poutaki Kōrero. (wh. 24-36).

---

## Putanga ako me ngā paearu mahi

### Putanga ako 1

Te whakamahi pāngarau hei whakaoti rapanga o te ao o te ākongā.

---

## Paearu mahi

- 1.1 Te whakakaupapa i ngā pūāhua ki ngā tikanga pāngarau.
- Whānuitanga Ko te whiriwhiri i te pāheko, i te whakaahuahanga, i te taurangi, i te tikanga rānei hei whakaoti rapanga.
- 1.2 Te whakamahi i ngā tikanga pāngarau e tika ana ki ngā pūāhua.
- Whānuitanga Ko te whakamahi i ngā tikanga pāngarau e hāngai pū ana ki ngā whakaaro whānui, ki ngā pūāhua hei whakaoti rapanga.
- 1.3 Te whakamāori i te whaitake o ngā urupare pāngarau ki ngā pūāhua.
- Whānuitanga Ko te whakamāori i ngā whakaotinga, i ngā putanga, i ngā aronga ki te pūāhua.

<b>Rā arotake</b>	31 Tīhema 2026
-------------------	----------------

### Kōrero arotake me te rā whakamutunga mō te aromatawai o ngā putanga i tautuku

Hātepe	Putanga	Rā whakaputa	Rā whakamutunga mō te aromatawai
Rēhitatanga	1	18 Hune 2021	31 Tīhema 2024
Arotakenga	2	30 Nōema 2023	N/A

<b>Ko te tohutoro ki ngā Whakaritenga i te Whakamanatanga me te Whakaōritenga (CMR)</b>	0233
---	------

Ka taea te tiki atu te CMR nei mai i te ipurangi  
<http://www.nzqa.govt.nz/framework/search/index.do>.

### He kōrero mo tēnei paerewa

Mehemea he whakaaro, he āwangawanga ōu mō te paerewa nei, tēnā koa whakapā mai ki te Tāhuhu o te Mātauranga (Ministry of Education)  
[enquiries.national@education.govt.nz](mailto:enquiries.national@education.govt.nz)).



# Te Tautuhinga Aromatawai ā-Waho



Te Paerewa	32412
Te Ingoa o te Paerewa	Te whakamahi pāngarau hei whakaoti rapanga o te ao o te ākongā
Ngā whiwhinga	E 10
Te Marau	Te Marautanga o Aotearoa: <a href="#">Te Pāngarau</a>
Te Wāhanga Ako	<a href="#">Te Tukutuku Ako</a>
Te Tukanga Aromatawai ā-Waho	<a href="#">He Kete Manarua</a>
Ngā Momo Tāpaetanga ā-Matihiko	He konae tuhituhi – .PDF (5–20 whārangi) He kiriata – .mp4   .avi   .mov   .m4v (<5GB)
Te Rā Tuku Aromatawai ā-Waho	29 Oketopa 2025
Ngā Wātaka 2025	<a href="#">Examination timetable and assessment dates 2025</a>

## Te Whakatakotoranga Aromatawai ā-waho

He kohinga mahi, he kohinga taunaki rānei nā te ākongā i whakaoti i te roanga ake o te tau hei whakatutuki i te Whānuitanga o ngā Paearu Mahi me ngā Putanga Ako. Mā konei e puta ai te ihu o te ākongā i tēnei Paerewa.

### Te Pūāhua

Koia nei te āhuetanga, te mahi, te kaupapa rānei hei horopaki mō te mahi pāngarau, mō te mahi reo hoki.

He kaupapa tēnei e whai wāhi ana te ākongā i roto i te kura, i te marae, i te hapori, i te whānau, i te hāhi, i te karapu tākaro, i te aha atu, i te aha atu.

- Ko te manaaki manuhiri.
- Ko te mahi kai.
- Ko te mahi māra kai.
- Ko te mahi moni mō tētahi kaupapa.
- Ko te hanga rawa.
- Ko te huhua o ngā mahi kē atu.

Ko te tikanga, he mahi tēnei ka mahia i roto i te whānau, i te kura, i te marae, i te hapori rānei. Ehara i te mahi hou, engari ka hōhonu ake te aro ki ngā wāhanga iti o te pūāhua.

Tēnā tirohia te Kete Manarua i te paetukutuku nei: [He Kete Manarua](#)

E whakaatu ana te Kete Manarua i t/ētahi tauira hei kōwhiringa mā te kaiako. Mā te kaiako tonu e whiriwhiri mēnā rānei ka whakamahia te/ngā tauira nei, ka whakamahia rānei he mahi whakaharatau, ka whakaritea rānei he Tūmahi Aromatawai ā-waho anō.

He Tūmahi Aromatawai ā-waho e ārahi ana i te ākonga ki te whakatutuki i ngā Whānuitanga o ngā Paearu Mahi. Ka whakamahi pāngarau hei whakaoti rapanga mō te ao o te ākonga, ā, ka whakakaupapa i ngā pūāhua. Ka whakamahia ngā tikanga pāngarau, ka whakamāoritia hoki te whaitake o ngā urupare pāngarau ki ngā pūāhua.

## Ngā Herenga Aromatawai ā-waho

He mahi takitahi tēnei mahi me te whakatakoto taunakitanga mō te aromatawai ā-waho mā te ākonga. Kia tutuki pai ai te Kete Manarua ā-matihiko nei:

- me whakaputa hei PDF;
- me noho te rahinga tuari ki raro i te 5GB e pai ai te tārewatanga o ngā mahi ki te Online Digital Submission Portal;
- me tika te whakaraupapatanga o ngā mahi;
- me tika te whakatakotoranga o ngā mahi (kia kua e noho tītaha, e huripoki rānei);
- me tāmau te kiriata ki te tītohunga ata, otirā, kāore e whakaaetia ana te tukunga o te honongaitua i tōna kotahi.

[Using the new digital submission portal.](#)

## Te Motuhēhē o ngā mahi o ngā ākonga

Me pēhea e mōhiotia ai te motuhēhē o ngā mahi a ngā ākonga? He tukanga, he taunakitanga me whai, e mōhiotia ai nā te ākonga ake āna mahi aromatawai ā-waho. Kia mataara ngā ākonga, ngā kaiako me te whānau hoki o te kura ki te motuhēhē o ngā mahi a ngā ākonga.

He māmā noa iho te tiki mahi a tangata kē, heoi, mā te mihi e whakaatu, e whakanui hoki i ngā tāngata me ngā puna awhina i puta ai ngā mahi a ngā ākonga.

### Hei tauira:

- He rerenga kupu poto e tohu ana i te pūtakenga mai o tētahi kōrero;
- He rārangi tohutoro i te whārangi whakamutunga o ngā mahi;
- He mihi ki ngā puna awhina, ki ngā puna kōrero;
- Ngā momo puna awhina, puna kōrero rānei:
  - » he kōrero ā-waha: he uiui i ngā kaumātua, i ngā pakeke, i ngā rangatira, i ngā mātanga rānei;
  - » ngā pukapuka i whakaputaina;
  - » ngā pukapuka kāore anō i whakaputaina;
  - » ngā wāhitau ipurangi, ngā honongaitua rānei.

He kōrero anō kei ngā paetukutuku NZQA:

- [Authenticity: NZQA](#)
- [Myth 3 Managing authenticity: NZQA](#)
- [Authenticity of externally assessed standards: NZQA](#)
- [Guidance on the acceptable use of Artificial Intelligence: NZQA](#)

## Te Tāpaetanga me te Hāponotanga

Ko ngā tāpaetanga Kete Manarua me mahi mā te pūnaha hou (kei te paetukutuku matua o MyNZQA): Tāpaetanga pūnaha hou a NZQA.

Kāore te Kete Manarua matihiko e whakahokia ki te ākongā. Mēnā he kōrero anō mō te tāpaetanga me te hāponotanga o te mahi, mā te tari o NZQA e pānui atu ki ngā kura.

Mēnā kei te hiahia āwhina te kura ki te tuku i ngā tāpaetanga o te Kete Manarua:

- Īmērahia a [assessment.servicecentre@nzqa.govt.nz](mailto:assessment.servicecentre@nzqa.govt.nz),
- waeahia rānei te NZQA Contact Centre i te 0800 687 296.

# Mahere Aromatawai ā-waho

Te Pūrongo mā te Ākonga | Te Pāngarau

Kaupae 1 | Whiwhinga 10

Paerewa 32412 | Te whakamahi pāngarau hei whakaoti rapanga o te ao o te ākonga.

Kura/Whareako Paetoru Nama MOE: \_\_\_\_\_

Ākonga NSN: \_\_\_\_\_

## Putanga Ako - Te whakamahi pāngarau hei whakaoti rapanga o te ao o te ākonga.

Ngā Paearu Mahi		Ngā Whānuitanga	Kua Tutuki	
1.1	Te whakakaupapa i ngā pūāhua ki ngā tikanga pāngarau.	Ko te whiriwhiri i te: <ul style="list-style-type: none"> <li><input type="checkbox"/> paheko</li> <li><input type="checkbox"/> taurangi</li> <li><input type="checkbox"/> whakaahuahanga</li> <li><input type="checkbox"/> tikanga</li> </ul> hei whakaoti rapanga	<input type="checkbox"/> / 4 Kia KOTAHI, nui ake rānei.	<input type="checkbox"/> Āe <input type="checkbox"/> Kāore anō
1.2	Te whakamahi i ngā tikanga pāngarau e tika ana ki ngā pūāhua.	Ko te whakamahi i ngā tnga Pāngarau e hāngi pū ana ki: <ul style="list-style-type: none"> <li><input type="checkbox"/> ngā whakaaro whānui</li> <li><input type="checkbox"/> ngā pūāhua</li> </ul> hei whakaoti rapanga	<input type="checkbox"/> / 2 Kia RUA o ēnei.	<input type="checkbox"/> Āe <input type="checkbox"/> Kāore anō
1.3	Te whakamāori i te whaitake o ngā urupare pāngarau ki ngā pūāhua.	Ko te whakamāori i ngā: <ul style="list-style-type: none"> <li><input type="checkbox"/> whakaotinga</li> <li><input type="checkbox"/> putanga</li> <li><input type="checkbox"/> aronga</li> </ul> ki te pūāhua.	<input type="checkbox"/> / 3 Kia TORU o ēnei.	<input type="checkbox"/> Āe <input type="checkbox"/> Kāore anō
<b>Ngā Whenu</b> Te Ine   Te Hanga me te Panoni   Te Wāhi me te Āhunga   Tau   Taurangi   Tauanga   Tūponotanga.				
Kia eke te ākonga i te Paerewa nei, me whakatutuki ngā Whānuitanga o ngā Paearu Mahi: Paearu Mahi 1 = kia KOTAHI nui ake rānei o ngā Whānuitanga e WHĀ. Paearu Mahi 2 = kia RUA o ngā Whānuitanga e RUA. Paearu Mahi 3 = kia TORU o ngā Whānuitanga e TORU.			Kāore anō kia tutuki te paerewa nei. Kia kaha tonu!	