

Final Design

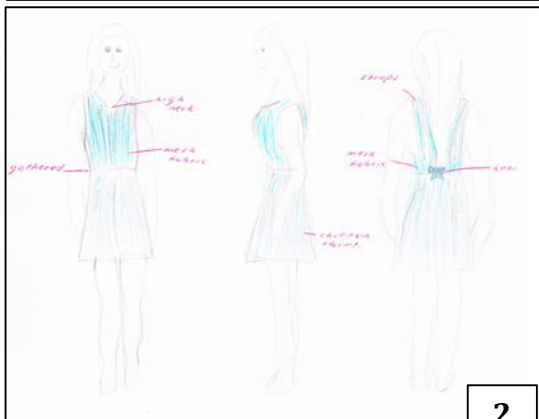
1

My final dress includes a high neckline with a small slit on the collarbone. I will have no back except a thin strip of fabric that creates a contrast. The edges of the no back will be lined with lace and have a cute bow at the base to add femininity to the dress.

The top layer of the dress will use a sheer chiffon fabric with a lining underneath to keep the top fitted. For the skirt I will be using a stiff fabric lining with mesh fabric on top that has the lines in the fabric that give the impression of pleating. The fabric is quite sheer so I will be using a dark color for the lining. I will be coordinating the colours for the top and skirt lining to help the dress look connected. **This will help the dress look nice/flowing and girly/feminine and keeping with the specifications of comfort, modesty and aesthetically pleasing.**

I will be using a gather stitch at the waist. I will be using a hairline seam as I'm using a lightweight fabric and it is the most suitable seam for this fabric type. I'm using a stretchy mesh fabric to give the impression of pleats and using a French seam on these parts where the sheer fabric is on display as it's the most appropriate seam for this fabric and looks the most aesthetically pleasing. I will use a simple hem that won't interfere with the dresses femininity and flowing look.

The special features I will be testing are the bow on the back of my skirt and the double layer gathering. My initial decorative feature included a low backless dress design but I decided to raise the back and add two straps to add to the comfort and security of my dress and add a bow for the girly look. I think that this design will better meet my specifications of comfort and modesty in my brief than my initial design.



2

Skills:

These skills would be suitable for a dress; French seam for a lightweight fabric as I am thinking of using this fabric on my skirt. I am thinking of having gathering on the skirt of the dress, using a hairline seam for my lightweight and translucent fabric on the skirt and the top of my dress. I may be using the mock felt fell seam on the skirt and maybe the front.

These skills are less suitable for a dress; Welt seam would only be appropriate for fabric like leather and I am using lightweight fabric for my design. I won't have shirring on the back of the dress as it isn't suitable for my dress design with no back. I won't use the lapped seam as it is suitable for thicker fabric and my dress is lightweight fabric. On my dress design I won't be using ruffles on the skirt instead I will be using gathering.

I place my lining inside my calico skirt and place the seams together. I pin the two layers together around the top and hand stitch this roughly. I then use the gathering stitch (increase length to 5 on straight stitch) around the top and then pull the strings to gather my skirt to the correct measurements of my waist.



I can visually check to see if the gathered skirt will fit and is at the correct measurement by trying it on. I can visually judge whether the seams are aligned.



3

Adaptations to Toile

Steps

For my final design I want a high neckline so in my block dress I lowered the neckline so would sit on my collar bone. Because of the design I intend for the back of my dress the front neckline had to reach the straps that are suitable for the backless design. This is why I made the curve wider reaching the edge of my collar bones.

Evidence



4

Reflection After Making My Calico Toile: After completing the top on my toile I realised that my top material is sheer so I could not have my lining wrong side with the wrong side of my top material because you would be able to see through it. So my solution was to stitch my top mesh fabric to the first lining after cutting my darts down around the edges and then treat this new piece as one front as attach this to my second layer of lining. On my toile it would be unnecessary for me to stitch my straps up with lining as the calico material isn't sheer. So on my final I would need to do something similar to my front. I will sew around the edge my top mesh fabric to my lining then turn it inside out and sew around two edges. On my toile the calico material isn't sheer so the technique I used was okay but because I am using chiffon fabric I need to sew the piece of fabric that is left when I sew up the dress into the same part of my lining. My top and my back triangles were too big so I had to make adoptions to my pattern to make it smaller so that it would fit. This dress meets my specifications by being formal enough for the party and is modest for wearing in public. This dress is girly and feminine and will be warm as it has double linings and appropriate lengths. The dress is comfortable enough to be worn for long time periods and is easily washable material.

Steps

The first step to sewing my dress is sewing my darts closed. I start with my lining an pin the darts closed, then sewing these up then continuing this process on my "top" fabric darts. To do this I don't back stitch at either end of the dart and follow the dart to the end.

Evidence

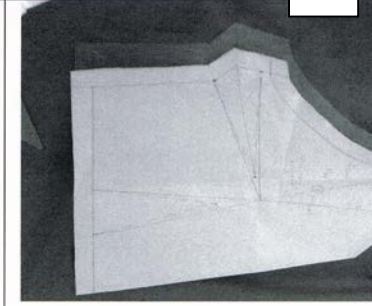


5

Steps

The first step to making my dress is the lining. I started with my top, I laid my pattern on my lining that is folded over and cut on the fold twice for my front pieces and cut two of the back triangles and one of each straps.

Evidence



What needs to be done? What materials will I need?

How I will comply with relevant health and safety.


What tests (checks) will I need to apply and when?

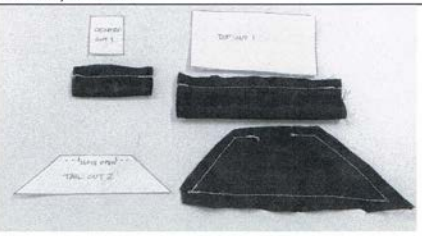


I need to cut out all the cardboard pattern pieces and lay them onto the fabric. I will make sure that I fold the fabric to cut on the fold. I will pin these down and cut them out carefully following the edges. The front piece is cut on the fold and is just one complete pattern piece.

I will comply with the relevant health and safety by making sure to keep my fingers away from the pins and to collect all the pins once I'm finished so that they won't fall on the ground. I will keep my fingers away from my scissors and be careful with them.

I will do a visual check to make sure the front piece is laid and the fabric, which is folded over to ensure that it will be cut on the fold. I will check that the back pieces are all cut two and not on the fold.

6

<p>Cutting Out my back top pieces.</p> <div style="border: 1px solid black; width: 40px; height: 40px; text-align: center; margin: 10px auto;">6</div>	<p>This is similar to the front top pattern piece step. Although I did not need to complete and darts or anything as the back design is essentially backless. The straps were cut out separately and are only a cut one and the bottom part of the back design is cut two pairs.</p>	<p>I complied with the relevant health and safety by making sure to keep my fingers away from the pins and to collect all the pins when I finished so that they won't fall on the ground. I kept my fingers away from my scissors and was careful with them.</p>	<p>I visually checked that I have four separate straps for my back at alternating lengths. I visually checked that the two bottom back pieces are separate and match together with matching sides (both the good side facing upwards while the bad side both facing downwards) not one of each.</p>	<p>I had the same difficulties with my back pieces and ensuring all the lines were in the same direction I did this by pinning with room for stretching and laying it over the desks fully before pinning.</p> 
--	--	--	---	---

<p>My Plan for Trialling and Testing my Two Special Features</p>		
<p>Bow</p> <p>Planned Trial</p> <ul style="list-style-type: none"> The stitch distance from edge of fabric to sew together the bow. The various sizing for the bows. The seams which will be seen on the bow. <div style="border: 1px solid black; width: 40px; height: 40px; text-align: center; margin: 10px auto;">7</div>		
<p>Seams</p>	<p>Test/Check</p> <p>I will test the bow seams by first using the hairline seam</p> <p>I will test the seams for the bow by using a French seam.</p>	<p>Evidence/Comment</p> 
<p>Stitching</p>	<p>I will test three different sizes for the distance from the edge of the fabric when testing the hairline seam. (12mm, 13mm, 11mm)</p> <p>I will test three different distances from the edge of the fabric using the French seam. (6mm, 5mm, 5.5mm)</p>	
<p>Sizing</p>	<p>I will test four different sizes for my boy to see the different effects. I will measure the full length of the bow at 12cm, 15cm, 13cm and 10cm.</p>	
<p>Scheduling</p>	<p>The bow is scheduled into the correct stage in the overall garment construction to create the optimum quality.</p>	

<div style="border: 1px solid black; width: 40px; height: 40px; text-align: center; margin: 10px auto;">8</div>	<p>10. Now the bow needs to be made. Firstly cut out all the pattern pieces onto the lining material. For the triangles sew together leaving the middle of the top unstitched. The small square is to be folded with right sides together and sewn along the length. The large square is folded with right sides together along the length. Turn all the pieces the right way out. For the rectangle makes sure the seam is in the middle of the rectangle and sew the edges together. Turn the other way so that the seam that was just sewn is on the inside and ensure the small seam is in the middle. Squeeze the square in the middle and hand sew together. Place the small rectangle and wrap this around the middle of the bow and hand sew this on ensure this is not done too tightly as the triangle needs to be passed through here.. Using a pin or a safety pin, pin the edge of the triangle and pull it through the small rectangle on the middle of the bow.</p> <p>11. Hand sew the bow on the left side of the back and ensure this is secure so that the bow hangs in the middle of the back.</p>
---	--

Teacher Notes:
Scheduling shown for special features Gathering and Bow.

9

Evidence shown in portfolio and pictures of tests. The teacher observed the student completing these tests for the gathering and the bow (7).

Scheduling shown before production - the techniques to be used are indicated in schedule, consideration of health and safety and tests that will be conducted (4) (5).

Evidence of production schedule shown – pictures and notes (6) (8). The teacher also observed the student complete each key stage as the garment was completed at school. The student did not ask for support during the making of this garment, only wanted advise on techniques (i.e. how to hem the bottom of the skirt on the overlocker correctly).

Dress: The techniques shown in the dress are shown in the portfolio schedule on how they were completed (3).

Gathers (2 layers) were all trialed and inserted evenly and correctly around the waist (4).

Hem of skirt not finished correctly using the overlocker as some parts not attached.

Invisible zip used. This was inserted correctly.

Open Seams overlocked side of skirt and waist to top

Side panel seams all match.

Lining inserted correctly top, neckline and arm holes.

Clipping was observed being used for all round and pointed sections of the garment.

Overall the garment has been completed using techniques indicated in schedule and was observed by the teacher. Teacher guidance was not needed by the student. The only issue with the garment was the hemming of the skirt and this was due to the nature of the fabric used. The students garment was completed on time.

Final outcome was shown in portfolio as fitting the student and functional.

The student always showed independence throughout the development, was organised and understood how to perform the techniques. When she asked a question it was only for clarification of the technique, not to be shown what to do.

No wasting of material and the techniques not repeated once done. Confidence is shown in creating the final garment.