

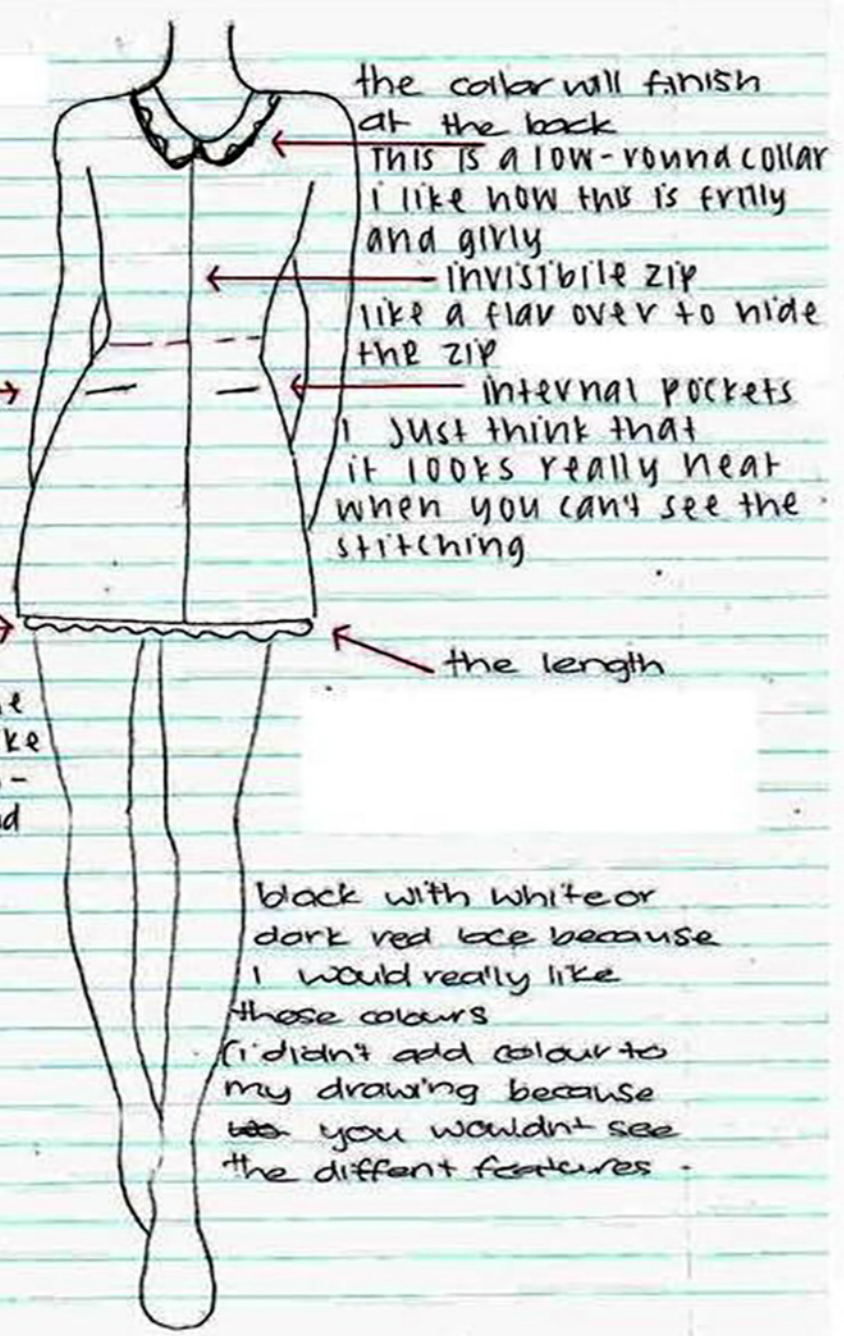
[1]

I will not have any feature at all on the back

long sleeves with no cuff just normal

lace because it will enhance what I look like and it goes together well and is pretty.

black with white or dark red lace because I would really like these colours
I didn't add colour to my drawing because you wouldn't see the different features.



the collar will finish at the back
this is a low-round collar I like how this is frilly and girly
invisible zip like a flap over to hide the zip
internal pockets I just think that it looks really neat when you can't see the stitching

the length

[2]

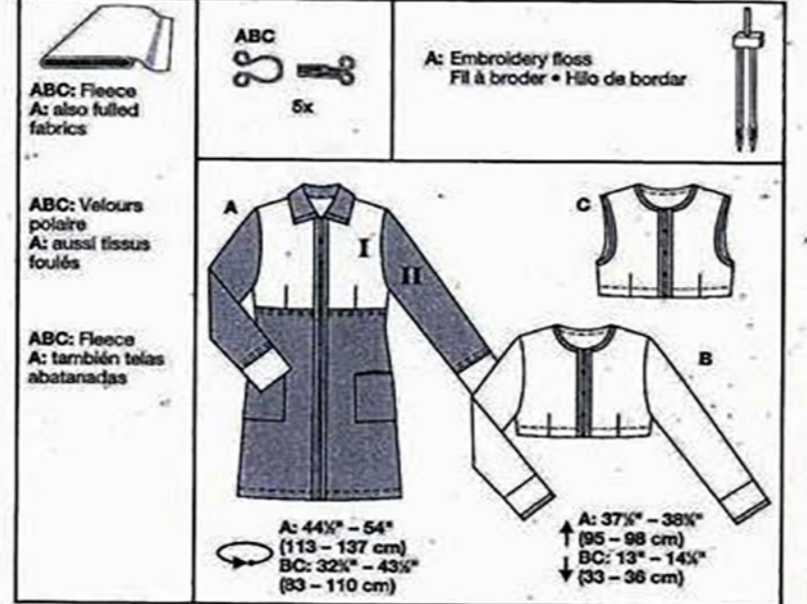
I am making this jacket in a size 20 to fit my body shape.

burda **A** **8002**

JACKET • VESTE • CHAQUETA
ABC: semi-fitted, semi-ajusté, semi-ajustado.

Sizes / Tallas	45 ins / 114 cm								55 ins / 140 cm							
	US 8	10	12	14	16	18	20	22	US 8	10	12	14	16	18	20	
A I	yds 7/8	1	1 1/8	1 1/4	1 1/2	1 3/4	1 7/8	2	m 0.65	0.85	0.95	1.05	1.15	1.25	1.35	
A II	yds 1 1/8	1 1/4	1 1/2	1 3/4	2	2 1/4	2 1/2	2 3/4	m 1.00	1.10	1.20	1.30	1.40	1.50	1.60	
B	yds 1 1/8	1 1/4	1 1/2	1 3/4	2	2 1/4	2 1/2	2 3/4	m 1.00	1.10	1.20	1.30	1.40	1.50	1.60	
C	yds 1/2	5/8	3/4	7/8	1	1 1/8	1 1/4	1 1/2	m 0.45	0.55	0.65	0.75	0.85	0.95	1.05	

→ with nap • avec sens • con dirección * without nap • sans sens • sin dirección



© by Verlag Anne Burda GmbH & Co. KG, Am Kestendamm 2, 77652 Offenburg, Germany

PATTERN ADAPTION

- 1 upper front
I'm not adding the pleat that is shown in the pattern piece on the front! might add a lace
- 2 upper back
(nothing changed)
I will also add the lace over top of this pattern piece
- 3 Lower front front
I am adding the pockets (internal) into the side seam
- 4 Lower back
(nothing changed)
I am adding a pocket (internal) into the side
- 7 the one in the pattern is called a shirt collar 2x
I'll be changing this completely by adding a completely different collar that I may construct myself like the Peter Pan design.
- 8 Pocket 2x
I may have to make ~~2~~ of ~~these~~ these as I will have to make the pocket then attach it to the inside of the jacket for the lining of the fabric

[3]



looking at the pattern, the pocket ~~is~~ was a square one that went on the front. I wanted ones that you can't see so now I have pockets that come in from the seam, so they are not visible.

[4]



[5]



I like how my jacket has turned out and that it's simple but it does [6] enhance my appearance. Although I would like to bring the pockets up higher. My ~~is~~ pockets sit 15 cm down from the front panel seam I would like to bring it higher, about 10 cm. I also would like to change how the collar ~~only~~ only comes around and has a gap I would like to have the collar meet in the middle. I would also like to change the length of the jacket to where the zip ends. I don't want extra material after the zip is finished.