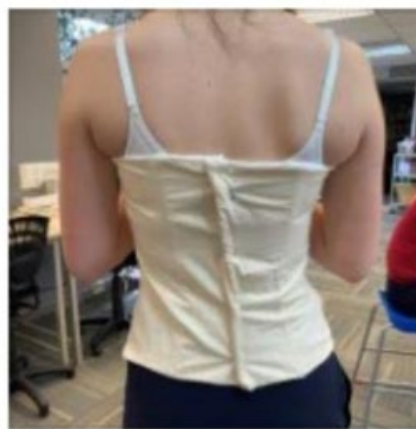
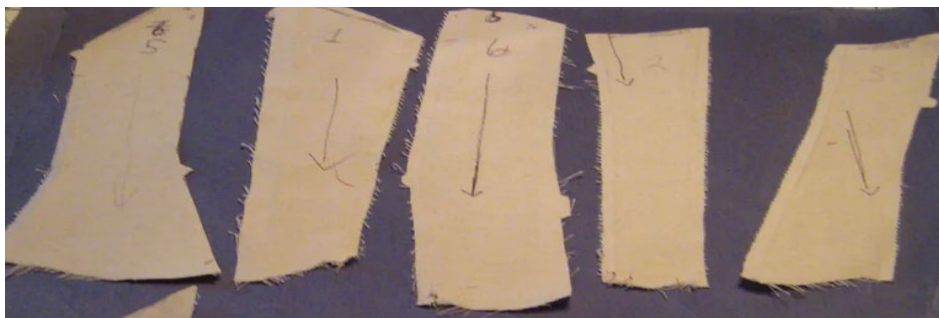


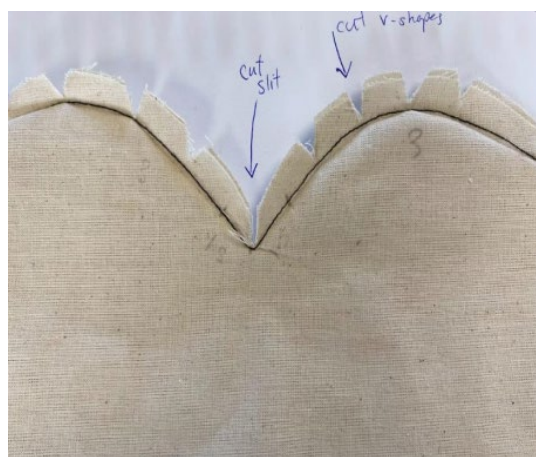
①



②



③



Press all seams open.

4



Step 5: ATTACH BONING

On the lining, sew boning down the center of all seams.
Start sewing the boning 1.3mm down from the top and finish 1.3mm from the bottom.

(Make sure the edge of the boning is melted with a lighter or rounded with tape to avoid sharp edge ripping through fabric)



5





8

Evidence Criteria for Merit		
Skilfully done: showing independence and accuracy in applying the selected techniques, tests, and processes	✓	Teacher Observation notes: Student has completed final garment independently by making a toile first and following a construction plan, skilful application of invisible zips, lining and boning has been mastered. A few mistakes were made but rectified quickly, the garment was refined to meet specification and is fit for purpose. Close up photo evidence of is supplied by student

Evidence Criteria for Excellence		
Efficiently done: Undertaking techniques, tests and processes in a manner that economises time, effort, and materials.	X	Teacher Observation notes: Some careful checking of steps with teacher before proceeding. Although some careless mistakes were made such as loosing panels and needing to re-cut, sewing panels in upside down due to not marking notches and top /bottom with chalk. Cutting Lay plan was not checked by teacher.