

Low Excellence
Intended for teacher use only

The process involved in achieving a quality outcome includes accurate judgement and use of measuring devices and tools such as chalk, sewing machine plate (ruler) etc. By marking out where to gather and keep in a line, the result will be successful.



Construction plan:

2

When making my toile, I ensured that I recorded each step of the production of my dress. This enabled me to complete a thorough construction plan, so that I would have a smooth production when making my final garment.

Prep: Wash hands each time to avoid staining white fabric.

3

For each sewing step, use a standard straight stitch with a #1 foot and stitch length of 2.5

Bodice, and sew a 1cm seam allowance.

Lay Plan



This lay plan shows my pattern pieces laid out to where I will cut them.

4

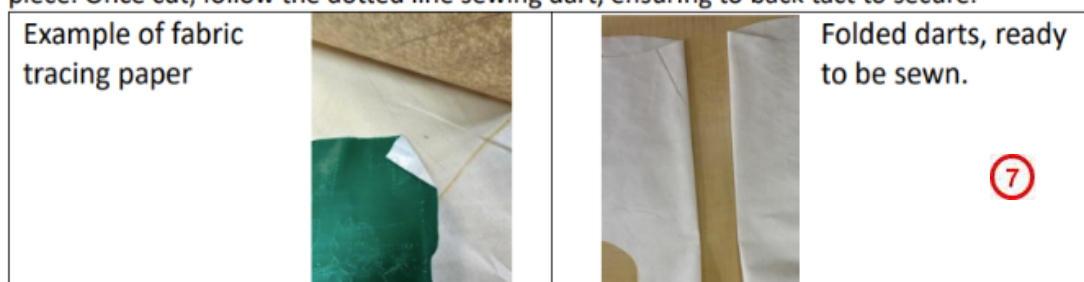
I ensure to have my teacher check my lay plan before cutting for a second opinion, to make sure that it is correct and that I prioritize processes the economies time, materials and money. By correctly exhibiting a lay plan, I ensure that I use the least amount of fabric, reducing waist.

5

The spare material that will be cut next the pieces will be used in further material testing/ technique practices. (skirt section was one large rectangle which was draped on mannequin and shaped along waist)

6

1. Before cutting out your fabric, use fabric tracing paper to mark out the darts on the back piece. Once cut, follow the dotted line sewing dart, ensuring to back tack to secure.



2. To connect the center front to the sides, ensure the fabric of both pieces line up by making two notches along the seam. Sew together, easing to ensure the fabric completely lines up and not scrunch. Use the notches as a guide.



There were many different options of closure when it came to finalizing my final design. I explored the use of invisible zips, exposed zips, and button up backs. Ultimately, I decided to use an invisible zip because it best suited by briefs requirements, as well as meeting visually appealing criteria's. A button up back, although beautiful and elegant in a wedding dress, does not suit my dress's requirements well, as with the dress being used on stage, it needs to be easily accessible to get on and off. Buttons take a significant amount of time as they can be very particular and frustrating. I decided to avoid an exposed zip, because it was clunky and not attracting to look at. My dress in production was sleek and elegant, and the exposed zip would attract too much attention where it was not needed. The invisible zip fell in between these two ideas. It is practical and easy for quick changes but has the ability to melt away into the fabric and go unnoticed.

8

Stakeholder feedback:

My stakeholders instantly agreed that the invisible zip is the way to go for my dress, as it meets all my practical and design elements. My teacher Ms Lang suggested that to make the highest quality and well-made gown, to take the time to ensure I can stitch the bodice and lining as close to the zip as possible, to make it seem completely invisible. This will enhance the look. I acted on this stakeholder feedback and took my time to do this well.

Evaluation: **9**

My final garment is a reflection of accurate planning, care and execution. I have explored and used complex techniques to create a visually appealing, fit for purpose gown. My dress designed for an on-stage wedding includes a tailored bodice, lining invisible zip closure down the center back, a graduating waistline from high waist to low waist, and a gathered skirt bottom. Throughout the course of constructing this garment, I used effectively used modelling to create a garment fit for purpose, while prioritizing the garments environmental and time efficiency.

I economized time by ensuring I fit tested the dress at various stages through its production, such as trying the dress on before inserting the zip to see if any alterations need to be made. By doing this, I am avoiding the risk of having to unpick or restart my project and I am able to get as accurate to measurements as possible. While constructing my toile I recorded each step in detail, so when the time came I could make my final garment to a high standard. Due to this detailed evidence, I was able to make my final garment in 2 weeks.

I economized effort by carefully following instructions and checking with the teacher before advancing in my project. By doing this, I avoided unnecessary unpicking or confusion, which helped me complete my project. I followed the motif of 'measure twice, cut once' during my project to minimized compromised results.

I economized materials by demonstrating an effective lay plan. My lay plan shows how I situated my pattern pieces on top of my fabric to prevent excessive fabric waste. I got my lay plan checked by my teacher before cutting, to ensure it is correct and therefore minimizing any waste if I cut it incorrectly.

Evidence Criteria for Merit	✓	
<p>Skilfully done: showing independence and accuracy in applying the selected techniques, tests, and processes</p> <p style="text-align: center;">10</p>	✓	<p>Teacher Observation notes: Careful checking of steps with teacher before proceeding. Correct methods used to allow for accuracy, such as use of measuring tools, pins, chalk, tacking stitches.</p> <p>Zip inserted accurately and evenly, cross join matching. Correct techniques for clipping and creating neckline shaped were implemented.</p> <p>Final Garment check/Teacher Sign off sheet included.</p>
Evidence Criteria for Excellence	✓	
<p>Efficiently done: Undertaking techniques, tests and processes in a manner that economises time, effort, and materials.</p>	✓	<p>Evidence includes: Lay plans are evident to show efficient use of fabric, student checked final lay plan with teacher before cutting toile and final garment.</p> <p>Teacher Observation Note: Student finished ahead of time. Refined and thorough development. No wastage or errors made.</p>