



①

I researched a wide range of methods to apply fabric paint to my specific material.

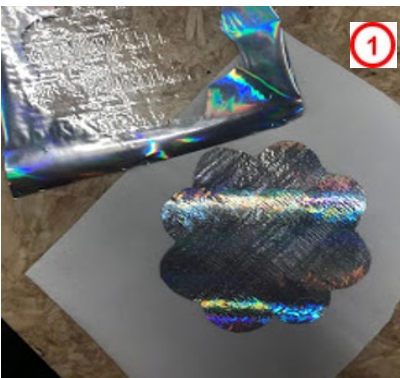
1. I found that the hand cut screen printing method was quite easy and efficient. The only trouble I had was removing the screen from the fabric in a manner that the fabric paint would not go outside the specific design. Overall the fabric paint spread evenly throughout all the material and left quite an effective and sharp design onto the material.



①

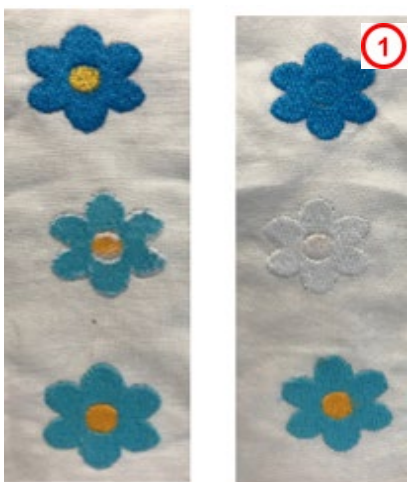
2. I found the hand painted stencil method more difficult than the screen printing method. I found that some fabric paint went beneath the stencil leaving an untidy finish. The commercial stencil was more difficult than the stencil which I created myself. This is due to the stencil being more intricate in design and smaller in design. This process also took longer, and I found that the time spent painting didn't resemble the completed finish.

3. I choose to do heat-transfer foil for the method it applies my design. I liked the finished look of the foil once it was on the garment. The application itself was very simple and quick. I enjoyed that the foil shape came out perfectly and that there were little errors to the completed design. I found the method which I choose to apply the foil to my design very effortless and straightforward. I liked that the design came out perfectly because the adhesive paper was already cut into the flower shape. The overall finish of the foil on the material is quite nice and I like how the foil catches and reflects the light.



①

4. Using the embroidery Q570, I tried my applied design for my garment. I sewed my design using a pattern which I have created. I tested 3 different materials and interfacings to find out which is the most appropriate, and which thread to use. I found the whole machine-embroidery very enjoyable and fulfilling. I felt that it captured all the different elements that I envisioned when I was creating the design for my garment. Although the whole process took a long amount of time, I felt that it would be suitable for my jacket as it fit my brief perfectly. Both the style and design of the flower has a major impact without be unsuitable for an office environment.



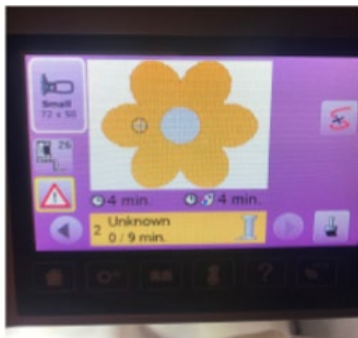
①

I chose to do machine-embroidery to create my applied design using the flower pattern I have made. The stabiliser which I will sew with will be the tear-away stabiliser, this is because it is easy to apply and prevents the fabric from stretching when in the embroidery hoop. Finally, my applied design will be sewn with

polyester thread to create shininess and because it interacted well with both the material and the sewing machine. Each of the embroidered flowers will be different colours with the same coloured centre to give the garment uniformity and also give it more options to be worn with other garments.

When completing the testing for my applied design I struggled to find the correct tension. At first, my flowers were untidy and the machine did not sound correct. However, after completing more research and tests I was able to sew an embroidered flower without any problems or help from Miss . I learned that when constructing my garment I needed to check the back every time to ensure that the bobbin thread was sewing well as well as checking the tension of each flower. 2

16. Place the embroidery hoop into the machine embroidery module.
17. Adjust position of the flower on the machine to ensure that it aligns with the marked centre on material.



18. Place the sewing needle down.

Because I had mapped out where each flower would go on my pattern and pre-marked the centres of each flower, each flower was accounted for and was sewn in the correct place. I practised so many flowers I could easily and quickly adjust the position on the machine to make sure my flowers were always in the right place. 3 The pattern for the embroidered flowers is simple yet classical in design, therefore my garment will be able to be worn with multiple outfits. I created an embroidery pattern which was simple but very carefully planned and applied to the fabric with precision. 3 Because of the size of the flowers and the simplicity of the design, they are able to be seen clearly on the garment. When constructing my garment, the applied design was the most time-consuming. However, I feel that the time spent completing my embroidery design gives my garment individuality.



	Student	Teacher	4
Merit			For merit I have to <i>skilfully</i> implement complex procedures to create an applied design for a specified product.
	√	√	<p>I have shown independence and accuracy when undertaking the complex procedures.</p> <p> was regularly observed selecting the correct tools and equipment without any assistance. was also guiding other students in the use of the embroidery machine. control of the settings on the machine and careful selection (using test results) of threads meant the final embroidery flowers were stitched and placed so accurately on the precut fabric.</p>