

He ringatoi  
Sian Montgomery-Neutze

Nō hea a Sian ?

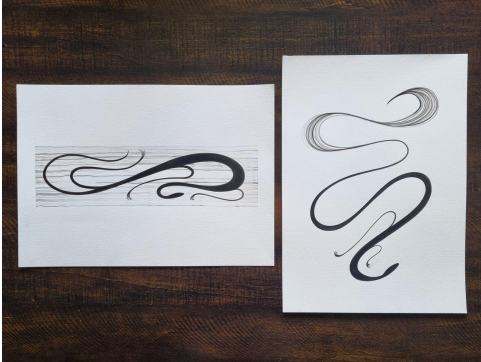
Ko tara koe e te tuhanga nō Ngai  
Tara nō Muaūpoko ano hoki.



TOHU KI ROTO I ĀNA  
MAHI TOI

# Mokomoko

Mahi toi a whaea Sian.

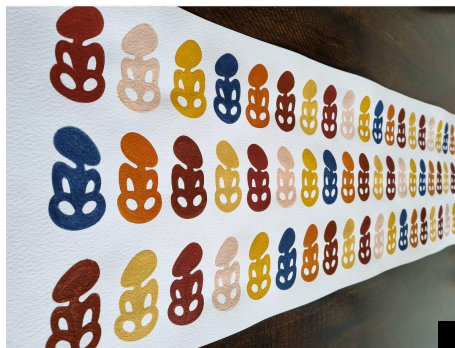


Tuna.

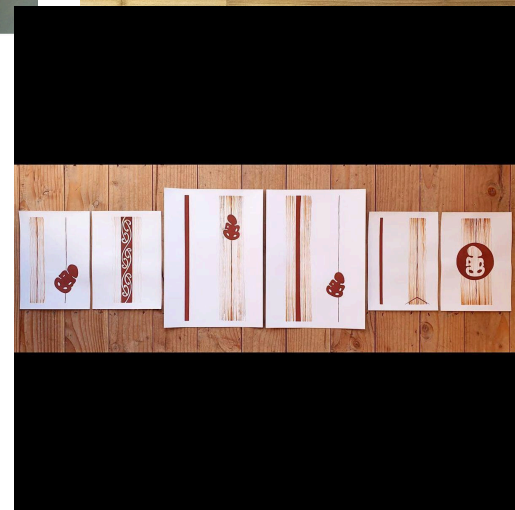


Mahi toi a whaea Sian.

Tiki.



Mahi toi a whaea Sian.



KŌKŌWAI





# He aha ngā momo tukanga toi ?

- Kōkōwai

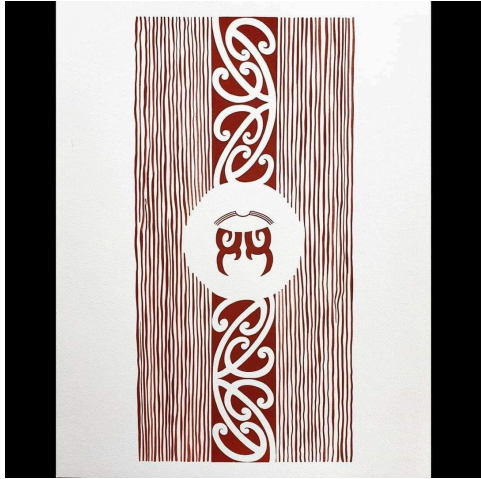
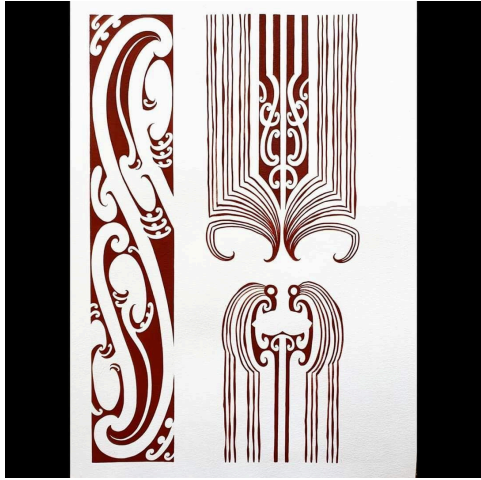
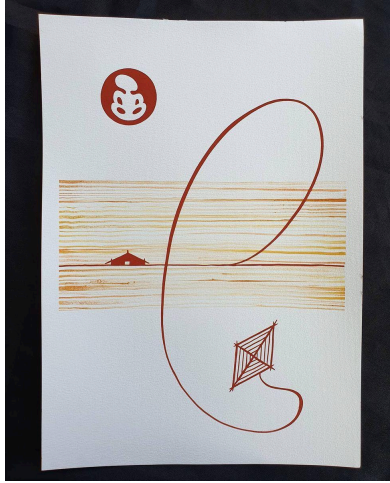
I mua i te wā kua tahuri ake hei kōkōwai i te tuatahi ake he paru noa o te whenua.

Ko ngā tukanga whakarite i te waituhi kōkōwai ka urua i te kōkōwai ki te ipu pehu kia pehuatia ka maringi i te wai ki roto kia mākū ake ai te kōkōwai ka whakauru i te mīere kia piri ai te waituhi ki te pepa.

Ki tēnei o ngā mahi i te wā kei te tapiri i te wai me te mīere ki te kōkōwai kia iti te rahinga tainoa kua tika te mōmō o te waituhi.

Īna ka tapiri te tokomaha o te kāpia kauri ki te kōkōwai ka tino hāpiripiri ka uaua te waituhi, me he mea kua tapiri koe i te tokoiti o te kāpia ki te kōkōwai ka taea koe te kite i ngā kerengeo o te kōkōwai **(5)**.

Ko te wharangi e whai ake nei ko ngā mahi toi a whaea Sian kua waituhi ki te kōkōwai.





Mahi toi a whaea Sian.

**MOKO**

# He aha ngā tukanga moko ?

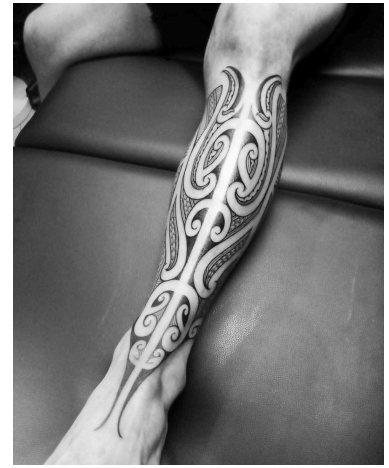
Tuatahi ake i mua i tāna tā ki te tinana ka kōrero tahi ia ki te kai riro moko kia whai mōhio kei te aha ia i te wā ka piri te tā ki te tinana.

Ka tā ake i ngā whakaaro ki te pepa kia tapiri ki te kiri katahi ka whai ake i tērā ki te tā moko . Ko ana tukanga moko ko te ahuatanga o te tinana ka whai ia i te rere o te tinana.

Ki te taha o te moko kauae i te wā kei te tā i te moko kauae ka kī atu ki te kai riro kia tū ake kia kite īna kei te pai te rere te tirohanga hoki o te moko kauae (5).

Ko te wharangi e whai ake nei ko ngā mahi tā moko a whaea Sian.



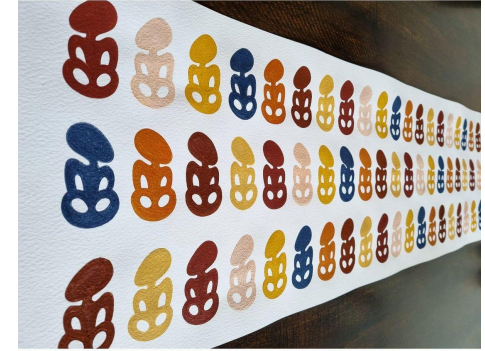


Mahi tā moko a whaea Sian.

HE TĀONGA



Ko te tohu o te taonga nei e tohu ana i te mana o te tangata. E rua tekau ngā tiki ki ia pae e tohu ana i ana tau kua ako ki te kura nei, e toru ki ia pou e tohu ana i ngā tau haerere ake nei koira te wāmua, wātū, me te anamata o ngā reanga heke nei (4).



Ko ngā mahi a whaea Sian ki tēnei tāonga ko te noho taurite o ngā tae, me te whakanoho o ngā tiki (4).

I whakamahi ia he tāhua kia orite ngā tiki kia orite te takotoranga hoki.

Ko te take ka whakamahi i ngā tae rereke nei pērā i ngā tae māmā me ngā tae kaha nei nā te mea he pai kia whai i tērā tauritenga o ngā tae i whakaraupapa hoki kia noho wehewehe ai ngā tae kaha nā te mea me he mea ka noho tata ngā tae kaha ka tino taumaha ngā tae kaore ngā tae nei e noho taurite. Kuputaka Kerengeo - lump of earth or clay (5).

