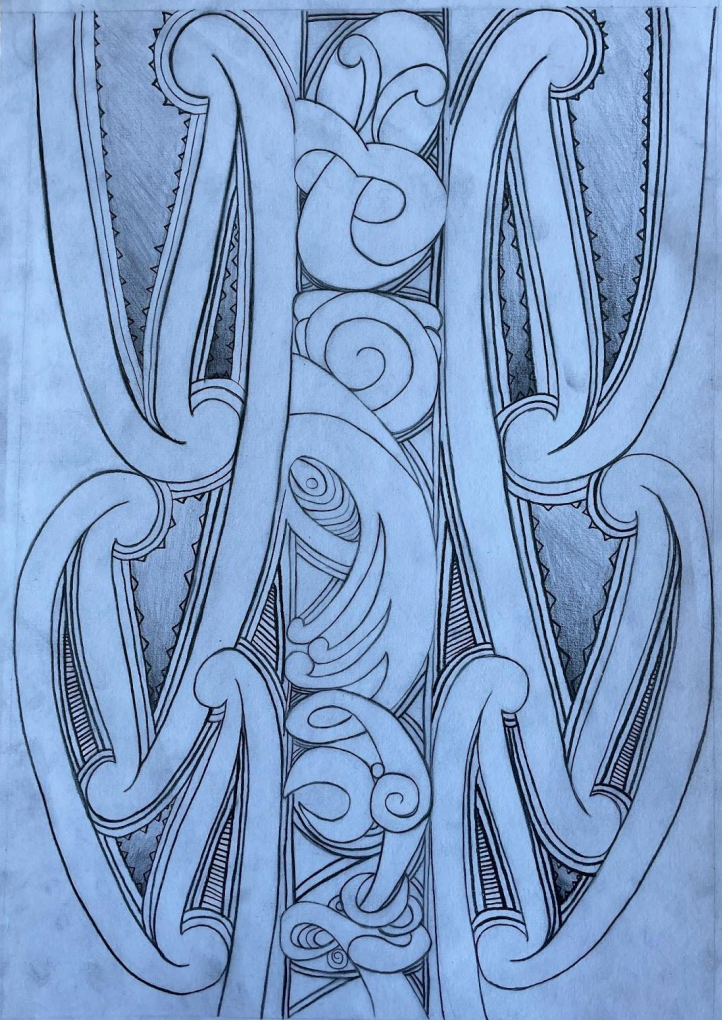


Whakapapa o te toi



Ko tāku mahi toi e whakaatu ana i te whakapapa o te whakairo. Me te hononga ki ngā atua e hāngai ana ki ēnei o ngā mahi toi

Ko ngā Taratara ā Kae e noho ana ki roto i ngā Pūhoro.

Ko ngā Ahu Ahu Mataroa hoki e noho ana ki roto i ngā wāhi iti o ngā Pūhoro

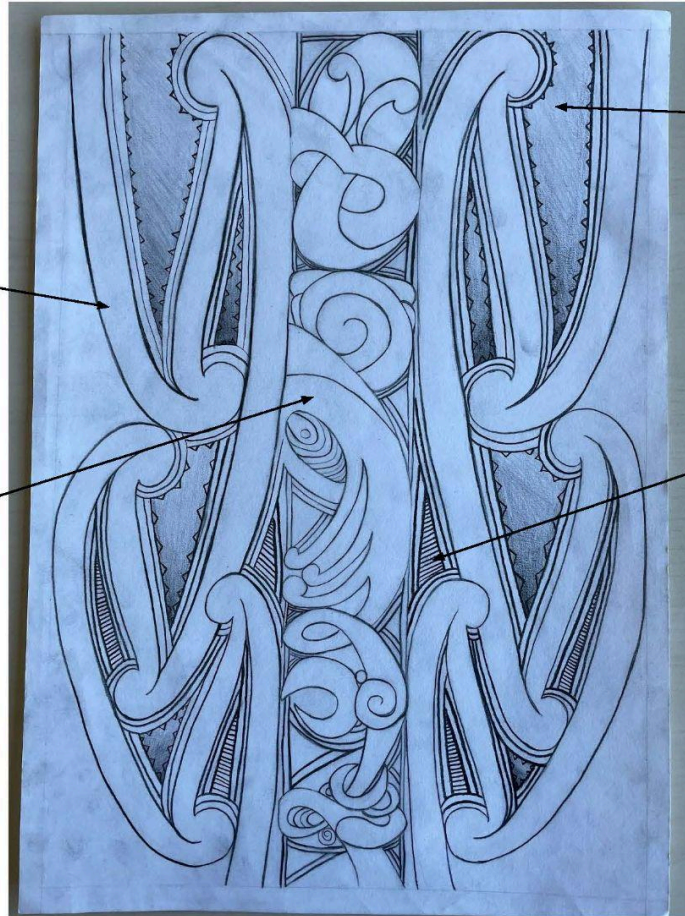
Ko ngā manaia ērā e noho waenga tū ana.

Kō tēnei koru he Pūhoro, e tohu ana i a Tangaroa me ōna wai riporipo.

3

Kei waenga kō ōku manaia ko Te Wheke a Maturangi tēnei, ko ērā atu o ngā manaia e tohu ana i tōna pakanga i a Kupe.

2



Kō ēnei ngā Taratara ā Kae, e tohu ana i ngā niho a te tohora.

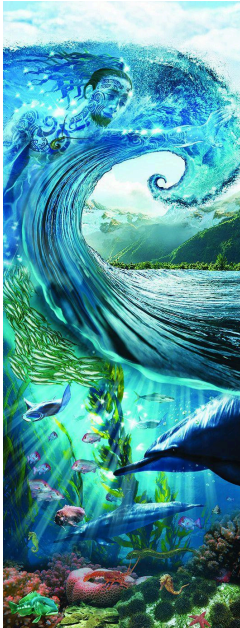
Ko ēnei ngā Ahu Ahu Mataroa, e tohu ana i ngā pukenga o te atua ki ngā tangata hoki. Nā te wānanga tahi kia whangaia i ngā pukenga ki te katoa.

Kō tāku mahi toi e whakaatu ana i te whakapapa o te whakairo.

7

Pūhoro:

Ko te Pūhoro he tohu o ngā ripo me ngā ngaru o te moana. Ko Tangaroa tērā o ngā atua e hāngai ana ki tēnei koru.



Ki raro i te waka he Pūhoro

Ki ōku nei whakaaro ko te take i pērā ai ngā matua tupuna kia haumaru ai, kia tere te haere ki tā rātou tūnga.



Taratara ā Kae

Ko Kae tērā mai ngā rā o nehe i tapaina ²
kia Kae te ingoa o tēnei koru na te ahua o āna niho.
Nā te pikopiko o āna niho ka ahua kite i tērā ahuahanga
ki roto i te whakarākei whakairo. ⁸
He tohu tēnei whakarakei mo ngā niho o te tohora hoki.
Ko ngā tohora he uri nō te
matāmua o Tangaroa ko Tūtarakauika. ³



Manaia

2

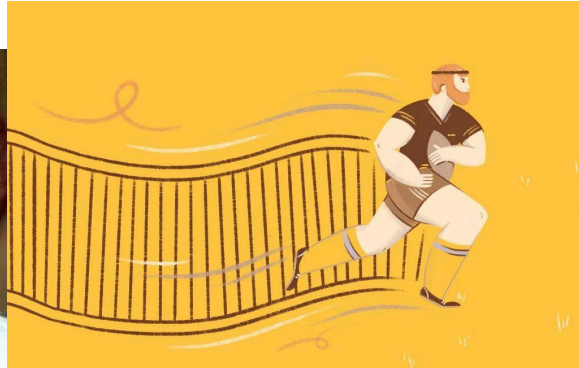
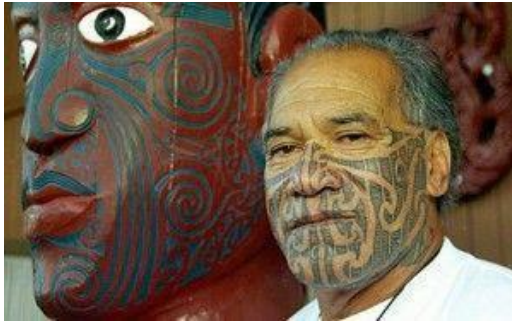
He kōrero ano tēnei nō Te Tai Rāwhiti, ko te manaia he tipua nō te moana, ki ētahi ko te ahua o te upoko o te manaia he orite ki te upoko o te manu, ko te tinana he orite ki te manaia ka noho ki roto i te wai moana.



Ahu Ahu Mataroa

He tohu te Ahu Ahu Mataroa i te mataara o ngā pukenga o te tangata.

8



Whakapapa o te Toi

Ngā Karu/Whatu

2

Nā te kāpō a Hine-Matiko-Tai kāore i a ia he whatu, ēngari nā tōnā kāpō he matakite hoki ia.

Kāore a Hine-Te-Iwaiwa i te kāpō nōreirā he karu ōna. 6

Te Marama me te Rā

He tohu ira wahine a Hine-Te-Iwaiwa mō te ira wahine nōreirā kua āpiti ahau i te moko kauae i roto i te marama, ōtira ka noho a Hine-Te-Iwaiwa ki te pō.

Nā te aranga mai o Hine-Matiko-Tai hei ngā ata kia karanga atu ki te ao kia oho kua hono atu ahau i te rā ki a ia. 4



Ngā Manaia e rua

E tohu ana Ngā Manaia e rua mō ngā māhanga a Hine-Te-Iwaiwa rāua ko Hine-Matiko-Tai.

3

Te Marae

E tohu ana te wharenuī o muri mō tōku marae o Tuatini.

Te Rauru me te Moko Kauae

He tohu te Rauru mō te noho piri, ā, he tohu te Moko Kauae mō te ira wahine.

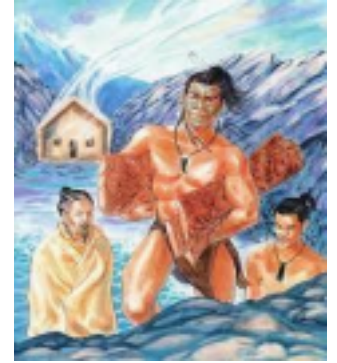
7

Te Ōrokohanga o te Whakairo

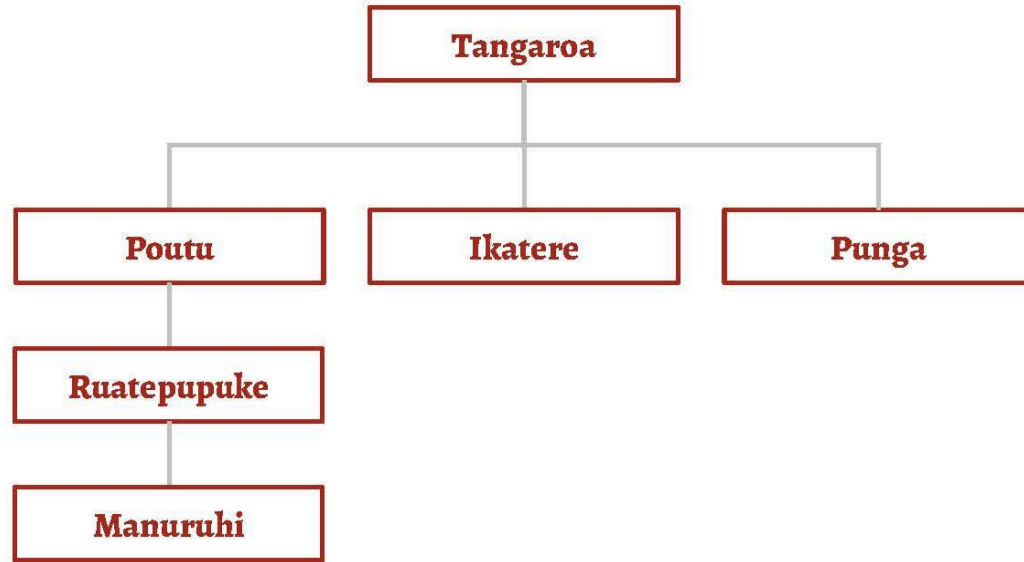
Tērā he kōrero e pā ana ki a Ruatepupuke, nānā ngā whakairo nō roto a Hui-Te-Ananui i tīkina, koirā te whare o Tangaroa. ③ ②

A muri i te patu i ētahi ika ka haere a Ruatepupuke ki te kōhi i tōna tama me te paku noa o ngā whakairo kāore anō kia tahuna ki te ahi.

Nā tēnei mahi a Ruatepupuke te tīmatanga o te mahi whakairo.



Te Whakapapa Tukuiho o te Whakairo ①



Tā Moko/Kauae

I whakamahi ahau i te Moko Kauae i roto i te marama. ⑦

Koirā te pūrākau o Niwareka rāua ko Mataora e kōrero ana mō te ōrokohanga o te Tā Moko. ②

Ko te tīmatanga o te Tā Moko nō Rarohenga, ā, ko te tohunga o te Tā Moko ko Uetonga te pāpā o Niwareka. ③

Ko Uetonga tētahi o ngā hekenga o Ruaumoko, ōtira ko Rarohenga te kainga o Ruaumoko.



Manaia

Ko te Manaia he kaitiaki nō te Ao Kikokiko, ko te take ka kite noa tia i tētahi taha o te Manaia nā te mea e aro ana tētahi taha ki te Ao Kikokiko me tētahi taha ki te Ao Tūro. ②

E ai ki tētahi kōrero nō Taranaki te Manaia.

Ko Tangaroa te atua e hāngai ana ki te Manaia. ③

