

Toi Puoro 2023

Tauaromahi Kaupae 1



Kōauau
Thandi Yewen
Palmerston North Girls' High School
Ringa Toi Student Exhibition 2023



Pūtorino
Nole Thomas
Tauranga Boy's College
Ringa Toi Student Exhibition 2022



Nguru
Nole Thomas
Tauranga Boys' College
Ringa Toi Student Exhibition 2023

Ka tautoko tēnei tauaromahi i te:

Paerewa Paetae 92087 (1.1)

Te whakaatu māramatanga ki ngā ariā toi puoro

Ko te tauaromahi he taura mahi a te ākonga e whakamārama ana i te matū o te paerewa paetae. He mea āwhina i te kaiako ki te kōwhiri whakataunga aromatawai ki te taumata e tika ana.

	Taumata: Kairangi
1.	<p>Mō Kairangi, ka tau te whakaputa whakaaro ki ngā ariā toi puoro kia whai pānga ki ngā horopaki huhua noa (1).</p> <ul style="list-style-type: none"> • He māmā te kite me te rongo atu kua āta wānangahia ōna whakaaro mō tētahi kaupapa kia mārama ai te whakaputa ki te ao (2). • Ko ngā horopaki huhua noa, he horopaki ki tua atu i ngā toi, ki tua atu hoki i te wā me te wāhi e noho nei te tangata, arā, te ao whānui o te tangata (3). <p><i>Tā te ākongā mahi (kei te whārangi e whai ake nei)</i></p> <p>Kua eke te ākongā ki te Kairangi nā te whakaputa whakaaro, nā te āta rangahau i te whānau toi puoro (1). Kua whakaatu i tōna tino māramatanga i ngā momo taonga, ā, kua whai whakaaro whānui (3) kia ariari ai ki tōna pūrongo (2). Kua whakatutukia te whakaaro mō ia taonga puoro e te ākongā hei taunaki i tāna aronga, ā, ka whānui tāna titiro ki tua atu.</p> <p>Kua āta whakatakoto ia i te whakapapa, tāna whakamahinga, me te whakapapa o ia taonga i rangahaua e ia. Nā konā i tutuki ai te wāhanga (2).</p>



Kairangi: tā te ākongā mahi

1 Pa'u

Ki ētahi ko te ingoa o tēnei taramu ko te tariparau, ki te ao taramu o ngā kuki airani he paparanga. Ko te taramu tuatahi i hanga i a rātou ko tona ingoa ko te Pa'u. Ko te Pa'u te taramu anake e taea ana ngā wāhine ki te whakatangi. I pākuru ana tēnei taramu me he kuru ki te whai oro panguru.



He aha te whakapapa?

2 Ko te whakapapa o te pa'u, he taramu nō ngā Kuki Airini, Tamanuiterā, Poronihia, Te Moana nui a Kiwa. I ngā rā o nehe ko te whakamahinga o te pa'u, he whakangahau atu, he mea hei whakamahi hoki hei karanga atu ki te iwi mō ngā momo huinga me ngā karakia. Engari ehara i te mea nō ngā kuki airani noiho te pa'u, e ai ki ētahi i ahu mai tēnei taonga puoro ki te ao tawhito o poronihia, a muri ake i te whitianga o ngā poronihia ki te rawhiti i tae atu te pa'u ki Hawaii i te tau 1000.AD. Taihoa ā, ka huri te pa'u ki ia o ngā iwi o te moana-nui-a-kiwa tae noa ki ngā kuki airani.



Tona whakamahinga i te ao tawhito

3 I whakamahi ngā kuki airani i te pa'u ki te whai piti i ngā waiata tapu o ngā teremoni (ceremonies) ko te ingoa o ngā waiata o ngā teremoni ko te ura pa'u. Ko te ura pa'u i ahu mai i ngā wahanga motuhake e toru ko te ura pa'u (Drum dances), te kōrero a tipuna (Legends) me te kaparima (Action songs) anō hoki. Ko te pāhekoheko o te ura ki te iwi o Hawaii ko te ingoa ko hula pahu.



Te ahuatanga/pehea e hanga?

Te nuinga o ngā pa'u kua hangaia mai i ngā rōku kokonati, engari ki ētahi o ngā iwi o poronihia kua hangaia hoki mai i ngā rakau rerekē.

3 I te ao tawhito i whakamahi ngāi kuki airani i te kiri o ngā mango. Ko te tikanga o tēnei ahuatanga, he kaha ake te pao o te pa'u ina ka whakamahia i te kiri o te mango.

I ahu mai tēnei whakaaro mai i ngā tangata o ngā Kuki airani. Ka whakaaro ake rātou mēnā ka pā mai ā tamanuiterā ki te kiri o te mango ka wera ake, Nā te wera ka whakawhanake i te oro o te pa'u. I ēnei rā ko te mea hei ka whakamahi e

3 rātou mō te wāhi pao ko te kiri ngā kararehe, engari ko te kiri o te nanekoti te mea nui. Ko te ahuatanga o te pa'u he ahua orite ki te hanga o nga taramu nguru o te ao moroki (modern day)



To'ere

1 Ko te to'ere, koia te oro matua o ngā taramu huri noa i ngā airani o poronihia. e ai ki nga tangata o Kuki Airani ko te to'ere koira te taramu whēuaua o ngā taramu katoa. Ki tēnei o ngā taramu, mā ngā tāne tautōhito anake tēnei taramu e whakatangi he whakangāhau, hei whakatenatena i ngā tangata ki te whakapiri mai ki ngā momo huinga me ngā karakia anō hoki. mai rā anō, mai rā anō kua whai e rātou i ngā tikanga o a rātou tipuna.



He aha te whakapapa?

2



Ko te tikanga i ahu mai tēnei momo taramu ki ngā kuki airani, ā, hei tōnā wā i haere ki ngā airani o Poronihia Wīwī hei koha mō ngā tangata poronihia wīwī.

He pera tēnei taramu ki ngā kōrero o te Pa'u he taonga tuku iho nō a rātou tipuna. Ki ia o ngā airani o poronihia he ahua rerekē ngā kōrero me ngā ingoa anō hoki o tēnā, o tēnā iwi, engari he orite te hanga, he orite hoki te tangi mai i te toere.

He taonga puoro tēnei hei whakamahi hei karanga atu ki te iwi mō ngā huinga, me ngā kārakia. Ko te tikanga, kua roa nei te wā i noho tēnei taonga puoro ki ngā kuki airani, tae noa ki te tau 1500 i whiti atu ki te iwi o Hāmoa.

Ko te whakapapa o te toere ki ngā kuki airani me ōna whakamahinga he rōpū taramu, ko te tangata tuatahi he tangata kaiarataki ko te tangata o mua. Ko te tangata ka whai ake ko te ropu, ko tērā te tangata i waenga. Ko te muri koira te tangata e tautoko ana i te ropu katoa. Tahape ko tēnei te tangata tuawhā, te rangi pāhekoheko, ā ki te tangata whakamutunga ko te oro oro te tangata e aro ana ki te piti o te tangata o mua.

Pērā anō ki te Pa'u ehara i te mea nā ngā kuki airani anake te to'ere nā ngā iwi huri noa poronihia tēnei taonga puoro.



Te ahuatanga/pehea e hanga?

3

Te ahuatanga o te toere, he rōku kua tapatapahanga ki waenga o te rākau, ahua penei. Me pena te kohao kia tōiriiri i te oro. ko te roanga, kua hanga i waengai ngā inenga 40cm ki te 120cm. Kua hangaia maitia te toere mai enei rakau

- Miro
- Tou
- Tamanu

Ka taea te kimi enei rakau huri noa i Te Moana-nui-a-Kiwa.

Ki etahi o ngā toere kua whakairotia i etahi hikuaua. Ki etahi he tohu mo te whakapapa o ngā kuki airani i ngā rā o nehe, ki etahi atu he whakaironui noa.

Na reira hei whakakapi i enei korero ko toku hiahia noa ki a koutou kia kaua e waiho i enei korero kia korero paraurehe noa. Whakarongo, mohio, tohaina i enei korero ki nga tangata huri rauna i te ao.



	Taumata: Kaiaka
2.	<p>Mō Kaiaka, kia whānui te whakaputa whakaaro ki ngā ariā Toi Puoro kia whai pānga ki ngā horopaki huhua noa.</p> <ul style="list-style-type: none"> • Kua whānui te whakaputa whakaaro ki ngā ariā toi puoro i runga anō i te horopaki whānui o ngā toi (1) • He māmā te kite me te rongo atu kua whai whakaaro whānui te ākongā mō ngā ariā nei (2) • Ko te horopaki whānui o ngā toi, ko te ao e noho ngātahi nei ngā momo toi katoa me ōna āhuatanga (3). <p><i>Tā te ākongā mahi (kei te whārangi e whai ake nei)</i></p> <p>Kua eke te ākongā ki te Kaiaka nā te whakaputa whakaaro o te whānau toi puoro (1). Kua whakaatu i ngā māramatanga o ngā momo taonga, kua whai whakaaro whānui (3) kia ariari ai tōna rangahau (2). Kua whakatutukia te whakaaro mō ia taonga puoro e te ākongā hei taunaki i tāna ū ki taua kaupapa.</p>



Kaiaka: tā te ākongā mahi

3 Ko Tāwhirimātea rāua ko Hine Raukatauri, te tamahine o Tāne Māhuta rāua ko Hinewehi, ngā atua o ngā Kōauau.

I waiatatia e Hine Raukatauri hei atua pūmau ia. Nāia kia whakaingoatia ko ia te atua o ngā kōauau katoa. E kīia hoki nei, nā tōnā arohanui ki te kōauau, kua tahuri i a ia hei hiraka pēpepe (casemoth) e werewere ana i ngā pōhutukawa i te mea he ōrite te hanga o te anga ki tētahi kōauau.

Ko tōnā hononga ki te puoro ehara ko tōnā pūmanawa kōauau anahe, engari ko tōnā aroha ki te ao katoa o te puoro. I tino kaha tōnā aroha, i whakatau kia noho ia ki tētahi kōauau hei kainga mōnā. I ngā rā o mua, i whakamahia i te kōauau hei mahu i te tauā, te whara rainei. Hako he waiata te puta mai, he kōrero i ngā oro. Mā te matatau kē e rongō.

I ēnei rā e ora tonu ana tēnei tāonga i te kapa haka, ngā pōwhiri, whakatau, tangihanga anō hoki. He tino puoro tēnei mai rā ano, ka tika kia rere tonu tēnei tikanga o te kōauau.

1 E waru ngā mōmo e mōhiotia nei e tātou.

1
2
3



Ko te tuatahi te kōauau. Koinei te matāmua me kī o tēnei puna. E toru ōna kōwhao, ka hangaia tēnei ki te rata, tutu, maire, puriri, ka mutu ko te mātai. E taea hoki ana koe ki te hangaia i te kōiwi toroā, kēkeno, kurī Māori anō hoki. Ko te tangi o tēnei he pai ake ki ngā mōteatea, karanga rānei i te mea e whā ngā rāngi. Koinei te mea e tino kitea ana i ēnei rā. E maha ngā whakamahinga tā te kōauau.

1
2
3



Tuarua, ko te porutu.

Ki Te Waipounamu nei, kua matua ake tēnei i te kōauau. He roa ake tēnei i te kōauau, kua nuku ngā kōhao e toru ki te pito, ā, he teitei ake hoki te rangi, me kīa nei he rangi hāpai. Kāore e taea ana te whai tikanga ka tangihia e tēnei.

1
2
3



Ka toru, ko te Rehu.

He roa rawa te rehu, ko tōnā oro ka tārua i te oro o te tohorā, o te kēkeno anō hoki. He hohonu ake tēnei i ngā kōauau kua whakaingoatia. Kāore e taea ana te whai tikanga ka tangihia e tēnei.

1
2
3



Pumotumotu.

I ētahi wā ka whakamahia i te Pumotumotu hei te whakairatanga, ka mutu, hapūtanga.

Kua kotahi anahe te kōhao o tēnei puoro, kua whakatopatopa anō hoki kia whakatangi i te Pumotumotu whai muri i te whānautanga mai o te pēpī. E kīa nei he "sonic conduit" tōnā mahi hei whakatangi mōteatea, hei whakamārama (ā-waiata) pakiwaitara, pūrakau, whakapapa, ngā hiahiatanga hoki mō te pēpī.



1
2
3



Tuarima, Ororuarangi.

Kua hangaia tēnei i te kakī o te hue. Kei te puku o tēnei ngā kōwhao e rua mā ngā matimati, kia rangihāpai te āhuatanga hei whakatinana i te ingoa.

Kāore he kōrero e pā ana ki ōna whakamahinga ā-tikanga.

1
2
3



Nguru.

Ko te nguru kua hangaia i te niho tohorā. Koia hoki te kōauau iti rawa o te ope nei. E tāea ana e koe te whakatangi i te nguru ki te waha me te ihu. He tikanga mai rā ano.

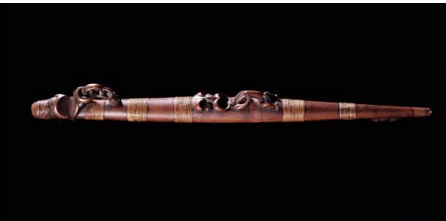
1
2
3



Kōauau Pōngā Ihu.

E tika ana, he kōauau mā te ihu anahe e whakatangi. Ki tēnei kōauau he ngutu ma te ihu e noho, i reira ai whakatangi.

3



Ka mutu, Pūtorino.

Kua tino kite i te Pūtorino i ēnei rā. E maha ngā momo oro e taea nei te puta; te kokiri o te tane, te wai o te hine. Ko tēnei hoki te kainga o Hine Raukatauri. Nā tenei, kua maha ngā momo rangi, oro, waiata anō hoki e tāea ana te puta.



	Taumata: Paetae
3.	<p><i>Mō Paetae, kua whakaputa whakaaro ki ngā ariā Toi Puoro kia whai pānga ki ngā horopaki huhua noa.</i></p> <ul style="list-style-type: none">• Ka whakaputa whakaaro ki ngā ariā toi puoro i runga anō i te horopaki ka tohua hei whai māna (1)• He māmā te kite me te rongo atu i ngā whakaaro ake o te ākongā kua whakaraupapahia (2). <p><i>Tā te ākongā mahi (kei te whārangī e whai ake nei)</i></p> <p>Kua eke te ākongā ki te Paetae nā te whakaputa whakaaro o te whānau toi puoro (1). Kua whakaatu i ngā māramatanga o ngā momo taonga, kua whai mārama. kia oti ai tōna rangahau (2). Kua whakatutukia te whakaaro mō ia taonga puoro e te ākongā hei taunaki i tāna rangahau (3).</p>



Paetae: tā te ākongā mahi

Te whānau a Tāne mahuta

Ko ia o ngā taonga puoro ka tapaina tōna ake ingoa, kua hanga hoki kia whai i tō rātou ake reo ahurei. Ka whakarōpūhia hei whānau, ka kitea hei koha mai i ngā ariki.

- 1 Kei te rangahau ahau e pā ana ki ngā tāonga pūoro o Tāne mahuta me tōna whānau. Ka whakamahi ngā taonga puoro mo ngā take ā-wairua, ā-tinana hoki. Hei tauira, ka whakatangi i te kōauau hei whakahari i te tangata, te karanga atu ki ngā wairua kia whakakaha oranga rānei. Te pūtōrino me ōna momo reo. Te pūkāea me ōna karanga whakatūpatō.

Kōauau

- 2 Ko te kōauaua tētahi o ngā momo taonga puoro matua o ngā Māori. Ko tēnei taonga puoro te kōauau a Tūtānekai i whakatangi mo tōna ipo a Hinemoa. Ko Te Murirangaranga te ingoa, kua whakaingoatia mai i te mana tūpuna i mate i muri tata iho i te whānautanga mai o Tūtānekai. I hanga te taonga puoro mai i te kōiwi o te ringa matau o te tūpuna nō konā i tapaina te ingoa Te Murirangaranga.



- 2 I te tau 1864 i mate te tētē kura o Te Arawa a Tohiteururangi i roto i te pakanga, e mau ana ia Te Murirangaranga ki tōna kakī. I ngā tau auina iho i hoatu tēnei taonga tongarerewa ki a Tawa i tākoha atu ki te whare taonga o Ākarana i te 1890. 1993 te tau i whakahoki ōkawa a Te murirangaranga ki tōna iwi a Te Arawa.

[Kōauau](#) [Kiriata](#)



Pūkāea

He momo pūawanui te pūkāea i hanga mai i ngā tapahanga e rua o te rākau kua pūtikitia. He maha ngā tāera rerekē ki roto i ngā momo pūkāea ka whānui mai i te haurua mita ki te rua mita te roanga.

He maha ngā momo horopaki ka taea te whakamahi i te pūkāea. Ko te āhukatanga matua o te horopaki ka whakatangi kia tauākī i ngā ara wairua. I whakamahi ngā tūpuna i te pūkāea hei tohu whakatūpatō i roto i ngā wā raru me te whakamōhio i ngā tohu tānga ki ngā matā kai kutu.

Ko ngā ahurea mahi, ngā ahuhenua ritenga ka hāngai ki te pounga, ngā hauhake o te kūmara me ētahi atu tupu ka piri ki ngā kawa whakaaio. Ki te whakamahi i te horopaki ahuhenua, he manawanui te pūkāea ki a Rongo mā Tāne, te atua o te kūmara me ērā atu tupu.

Tuatahi, ka tipako rākau pai kātahi ka auaha ki tētahi ahua koi. Ko te auaha nei he āhua roa me te pūhihi, ka timata ki te ngutu iti ki tētahi pito

ka kōrahirahi i te tinana, kātahi ka horahia ki te takere kia ōrite te ahua ki tētahi waha tārera. Whai muri i tērā ka āta mātitore/tapahi rānei hei haurua, ko te rūma oro o-roto ka hākarotia kia rite i te ahua o-waho. Ko ngā maurua o ia haurua ka piri ki te kāpia kātahi ka herea ki te weu, te wāina rānei.

Ina ka pupuhi te kaiwhakatangi ki roto i te pūkāea, ka ngateri te toetoe ākene pea kia rite ki te korokoro o te tangata me te mea nei he ōrite ki te kiri kei te tārewa ki muri i te korokoro ka whakatau ngō o te reo ira tangata. He māori mo ētahi momo pūkāea kia whai ahua pērā ki ngā niho kua whakairo ki te takere.

Ki ētahi iwi, ka whakatangi te pūkāea i waenga pōwhiri kia whakatau i ngā manuhiri ki te marae. Ā wairua nei, ka whakatangi te pūkāea kia mahea i te huanui me te whakatūturu i te oranga o te tangata, ngā whānau, iwi hoki. I te wā tūwhera te whare taonga o Te Papa ki Te Whanganui-a-Tara, i whakatangi ētahi pūkāea ki te whakanui i te whare hou. Ahakoa te horopaki, ki te whakatangi i te pūkāea ka whakaputa he oro kaha me te mārohirohi ka mau i te aronga o ngā tāngata katoa e rongō.

3

[Pūkāea](#) [Kiriata](#)





Pūtōrino

He ahurei ngā pūtōrino ki ngai Māori, kāore koe e taea te kimi i tēnei taonga puoro ki tētahi atu wāhi o te ao atu i a Niu Tirenī.

E ai ki ngā whakapapa Māori, ka ahū mai ngā tōrino katoa i a Hine Raukatauri, te tamāhine o Tānemahuta te atua o te ngahere me ngā mea o roto. He nui tōna aroha mo tōna tōrino ko te taonga puoro tōna kainga noho. Ināianei kua whakatangata ia hei pūrerehu ka tāwerewere mai i ngā kaupeka o ngā rākau ki roto i tētahi whare ōrite ki te anuhe, he roa me te tūpuhi. Ko te ahua o te pūtōrino ka ahū mai i te whare rā.

3 Ko te roanga o te pūtōrino ka whānui mai i te 220 mitamano ki te āhua nui ake i te 650 mitamano e ai ki ngā tauira ki ngā whare taonga. Ko te āhua o waho te whare anuhe ka whakairo mai i tētahi rākau totoka kātahi ka āta mātitore/tapahi ki waenga mā te roanga. Ko tēnei rūma o-roto ka whakakapi me tētahi kōwhao ki te takere. Ko te maurua o ia haurua ka piri ki te kāpia kātahi ka herea anō ki ngā weu. Ki te wāhi whānui o te pūtōrino he māngai, te whakapuaretanga i waenga. Ko te māngai te waha, te kaikōrero rānei nā reira ko tēnei whakapuaretanga te waha mō tētahi kanohi whakairo. Kua kitea tēnei kohao mo te wāhi kōrero o te taonga puoro.

Ka whakatangi te pūtōrino hei awa mo te reo. Ko tēnei āhua ā-mahi ka whakauru he whakaputanga reo hāngū keiwhā te whakatangi a te kōkiri o te tāne. Ehinu pūtōrino ka āhei te whakatangi mai te pupuhi ki te māngai. **Nā te mea he rerekē ngā momo rahinga pūtōrino me te ruarua noa o ngā oro ka puta i ia taonga puoro, he nui te wāriu, he taonga puoro ahurei ki a ngāi Māori.**

1

Pūtōrino Kiriata

Whai muri i te noninga kumu o ngā Pākehā, ka mimiti haere whakamahi o ngā taonga puoro nei. I tīmata ngā Māori ki te whakatangi i ngā taonga puoro o Pākehā kē. **Ka noho ngā taonga puoro Māori hei puiaki, ā, kāore ngā taitamariki Māori e ako ki te whakatangi.**

2

Nō reira, he nui te hōnore māku kia rangahaua ēnei taonga puoro.

Nā, noho ora mai rā me aku mihi nui

