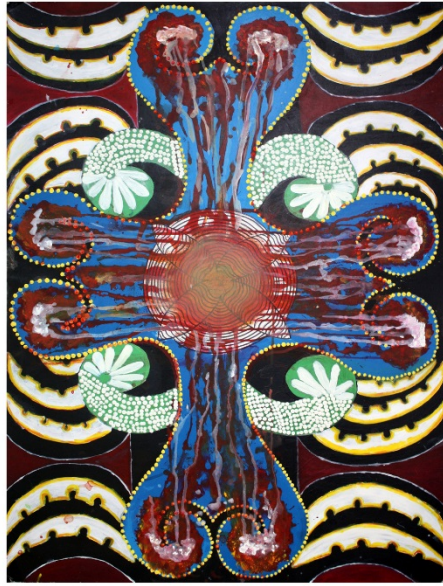


Student 4: High Achieved

NZQA Intended for teacher use only



*Student Statement:*

- I wanted to reflect my Punjabi background in my Kowhaiwhai work so decided to use it with Mehndi / Henna designs because there are similarities with all the curves. The middle design is like a map and shows the obstacles faced in life. The green koru represent blossoms or the new generations. In the background are eight clusters of Kape Rua designs floating. These represent my great-grandparents and the family lines that come from these.*

