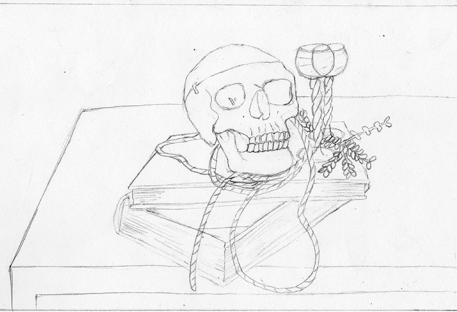




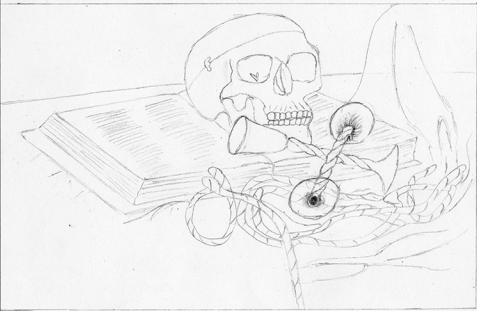
- Shallow sense of space
- Objects arranged on the table



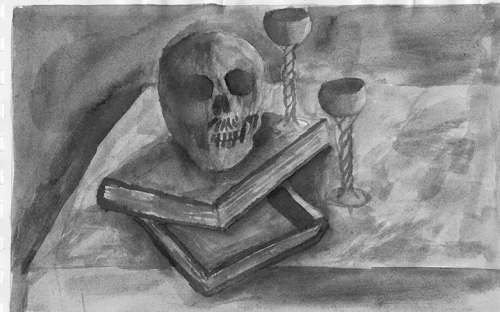
- Objects come out of the edge of the table.
- Background is plain.



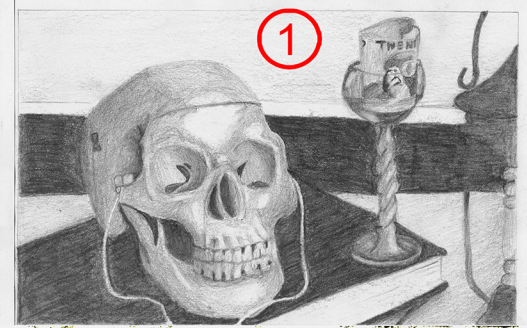
- Has a foreground/midground/background
- Pocket watch used to represent every hour, minute's, seconds of our life that we should cherish the most.



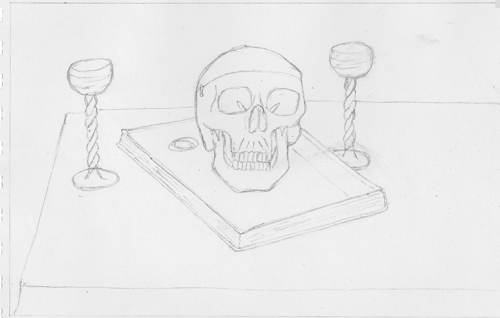
- Multiple objects
- Use of objects angles to link background/midground/foreground



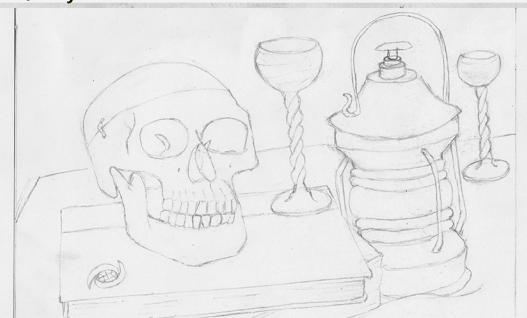
- Table edge is parallel to the edge of the painting
- Object comes out of the edge of the table



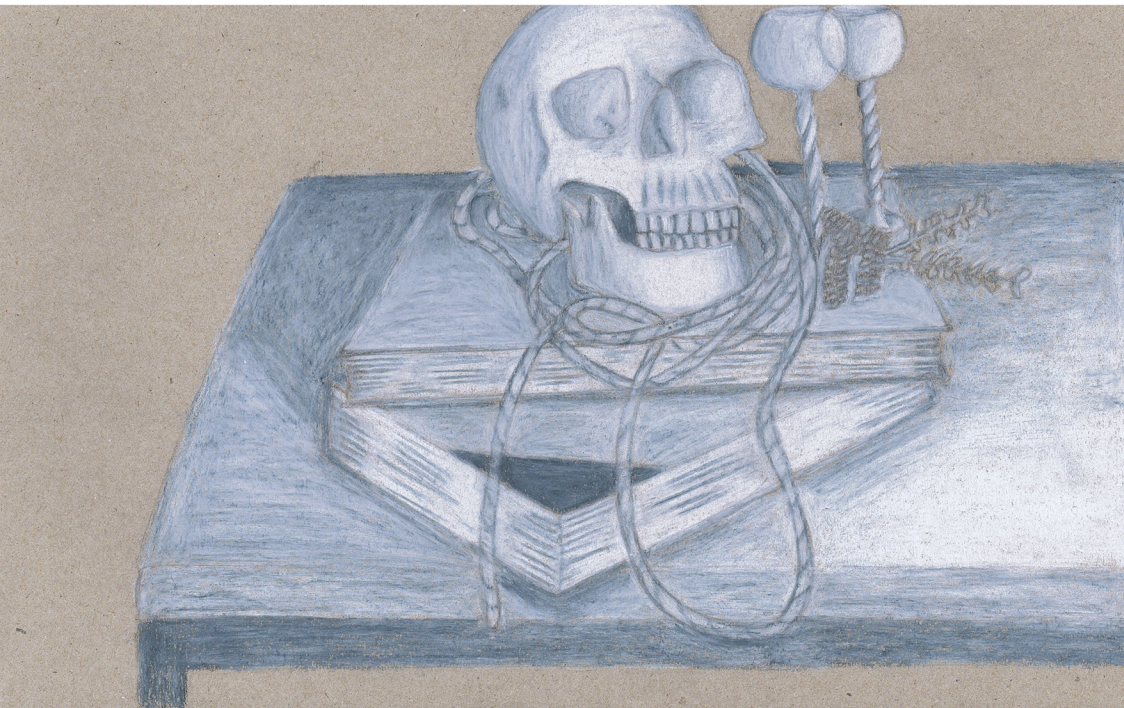
- The skull is used to represent death, which reminds us of our own immortality and the importance of each day you are living, and to cherish each and everyday.
- Side lighting

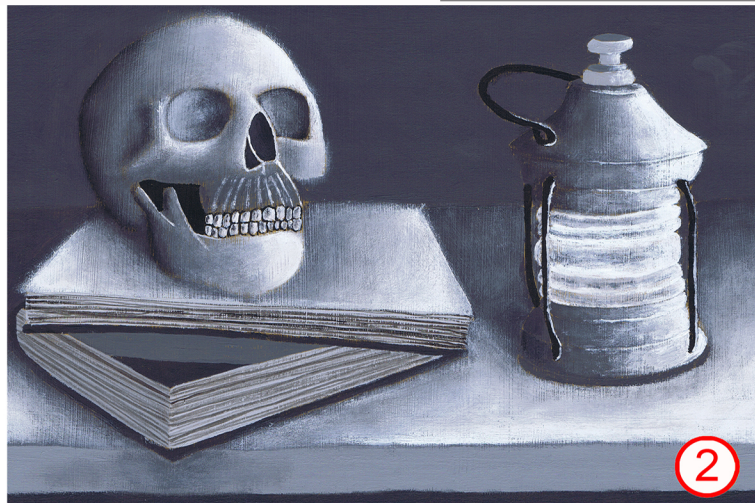
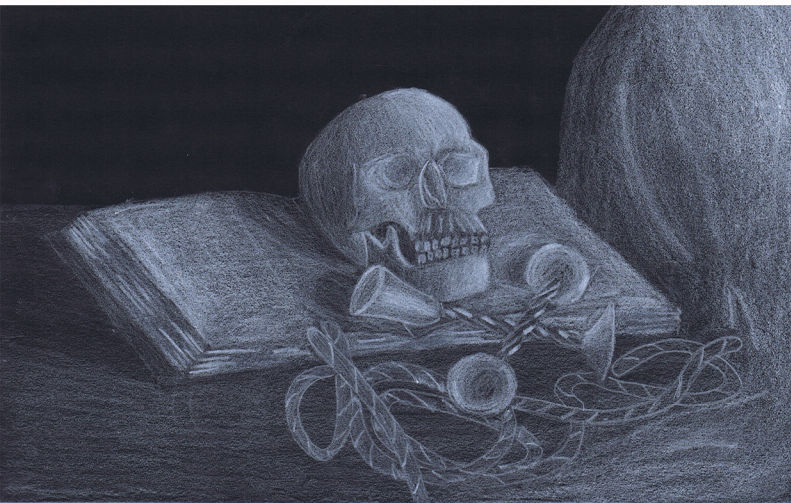


- Dominant central image/object
- Table edge is parallel to the edge of the painting

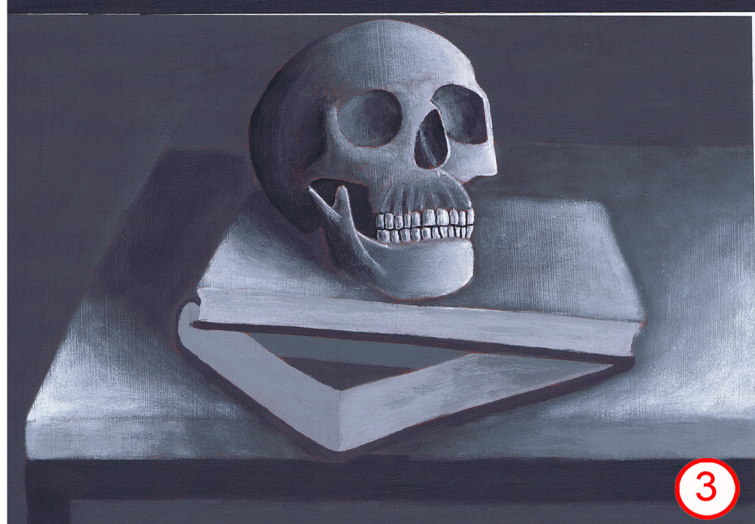
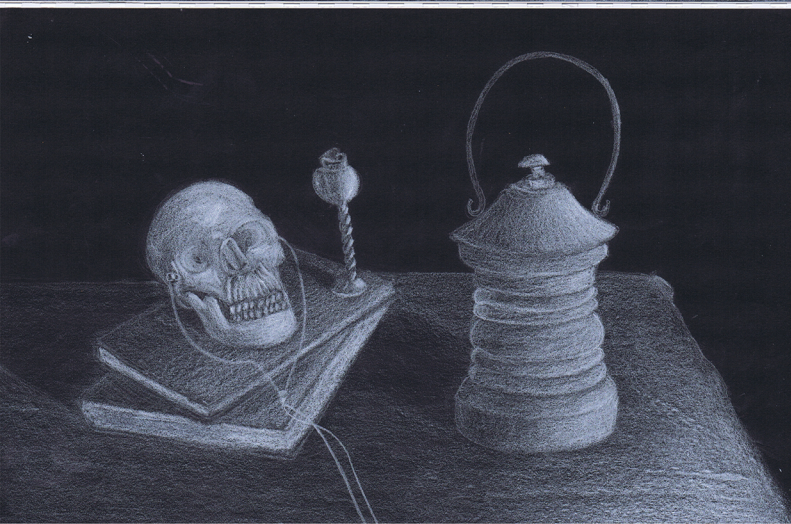


- Objects arranged on the table.
- Has a foreground, midground and background

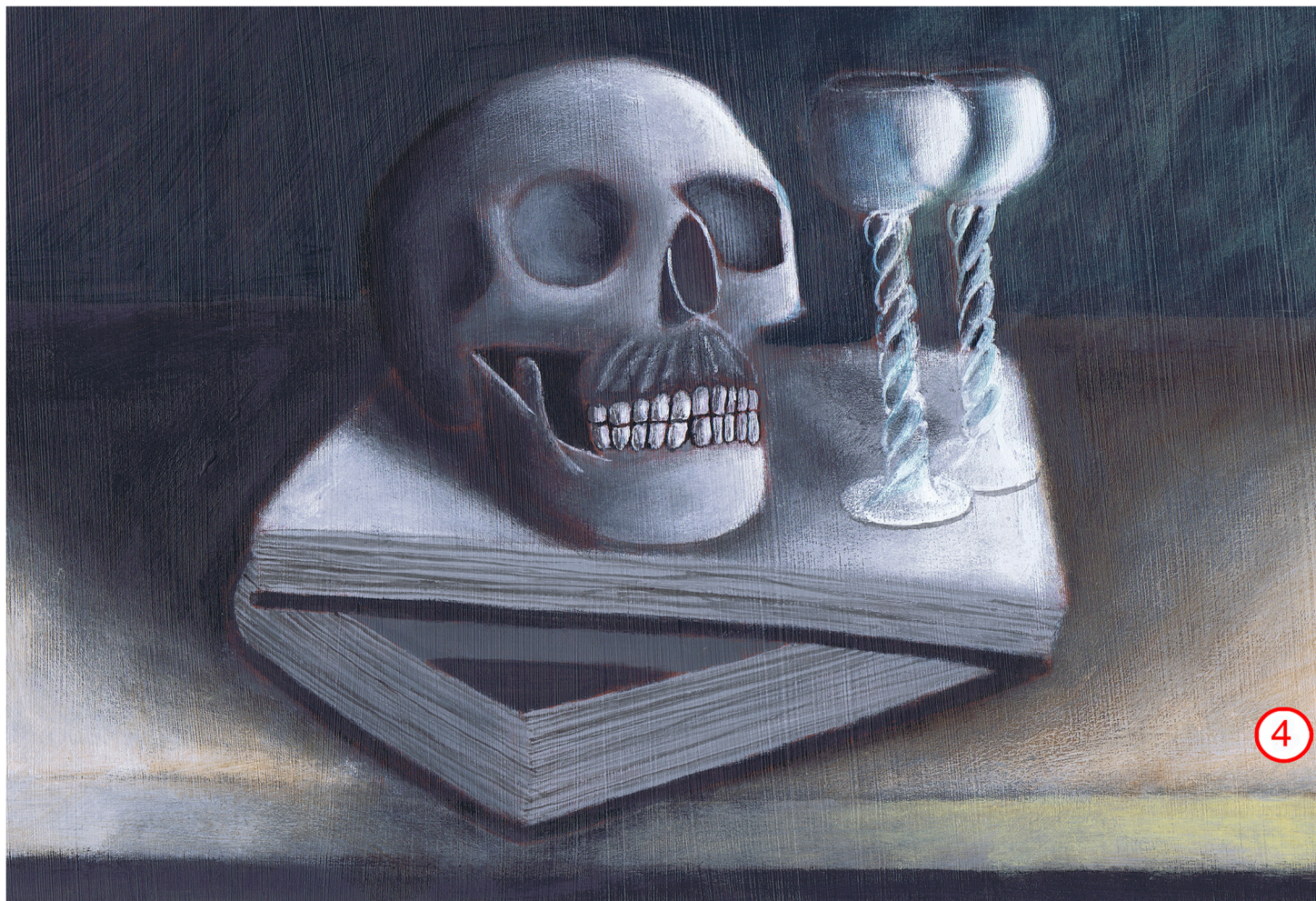




2



3



4