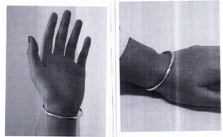


My object - Bracelet

Associate qualities
 I've worn it since I was 7, my hand has grown and I can't take it off. I think it's good luck and I think it looks pretty.
 If I didn't wear it I'd feel weird I got it when I was 7 from my mum.
 Just before my parents split up and I've it on ever since. (10 years) - Its grown with me.
 - It represents my parents divorce, which impacted my life.

Associative qualities for others
 It looks like a silver bangle to others. It can't come off.
 - It been with me for 10 years - its grown with me.
List of words the object provokes:
 - Its silver
 - round
 - memories
 - shiny
 - bracelet
 - Jewellery
 - representation.



1

Sculpture:
Task 3: Part A: Analyse your ideas.

Your idea Draw it.	How does it relate to established practice?	How does it relate to your associative qualities?	Is the idea successful Explain your reasons?
	It is enlarged x10	It doesn't come off (bracelet) it is pushed forward and tight fitting to hand.	no because its too plain. It just shows a hand and bracelet.
	Made with a rubber glove and made soft bracelet made with wire and cotton then covered	It is made soft because I have a soft spot for it. (It means a lot)	no because it isn't the shape of my hand and the bracelet wont stay on.
	This is enlarged like Mona Hautom and shaped like glasses like monas cheese grater blind.	It doesn't relate because it is big and made into glasses which have no association.	no because it doesn't relate to my associative qualities.
	hands are projected onto the wall in the shape of a bracelet. it practises the use of shadows.	It is in the shape of a bracelet.	it could work as an idea but I am unsure how I will be able to get a perfect circle.
	big bracelet that can come off hand. padlocked so it can't come off. changes the purpose like Marcel Duchamp	It cannot come off the wrist because its padlocked.	This idea works because it relates to my associative qualities strongly as it uses a padlock with no key.
	Lots of little fingers with little bracelets around them like Tony Ferher uses repetition.	my bracelet is small and cannot come off. it being around a finger shows this.	This idea relates to my associative qualities strongly it is also an interesting idea that uses both repetition and putting some thing that doesn't belong on an object there
	2 hands a man and a woman barb wired together	bracelet is the wire because it represents the join of my parents as I was given the bracelet before they split up.	This idea relates to me personally as well as the artist models techniques. It will be possible to make well and look effective.
	a soft hand made of cotton and cotton wool - stuffing. a ribbon tied around the wrist.	The ribbon represents the bracelet as it was a gift to me from my mother.	This idea relates to my associative qualities and portrays Claude Oldenburgs style effectively its successful.

2

made with clay, painted orange bracelet made with straws

hand made with clay - bracelet made with wire

hand made of clay, bracelet wrapped around hand. - made of wire

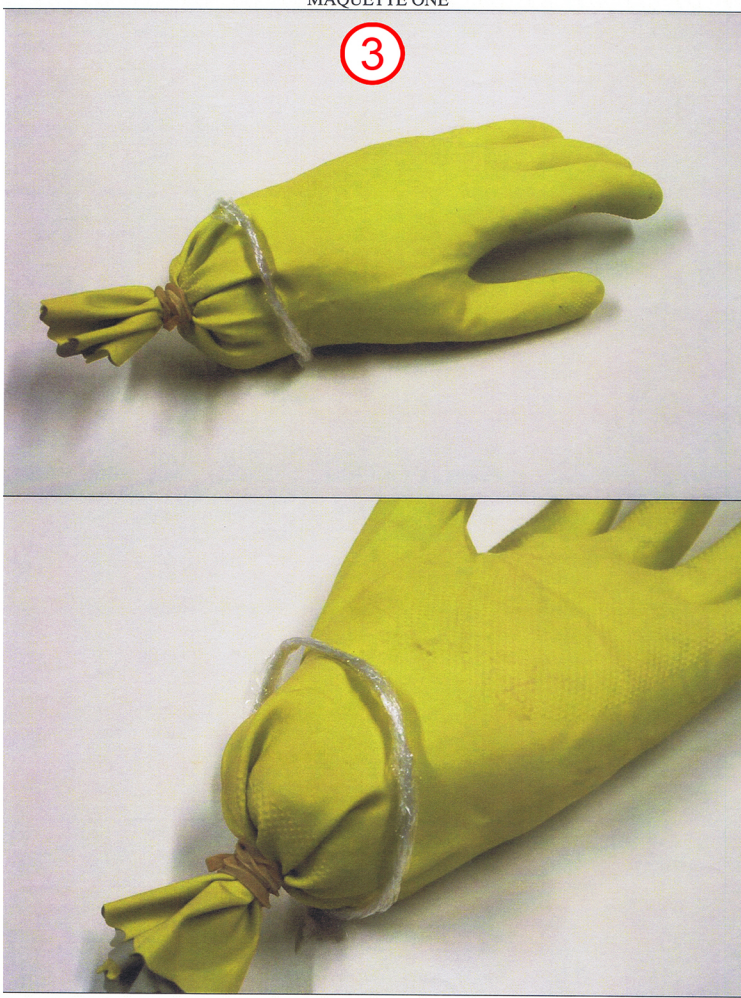
made with a rubber glove stuffed with cotton wool bracelet made with wire and cotton wrapped around it then covered with silver material

made with wire big hoop enlarged x10

made with polystyrene + big hoop enlarged x10

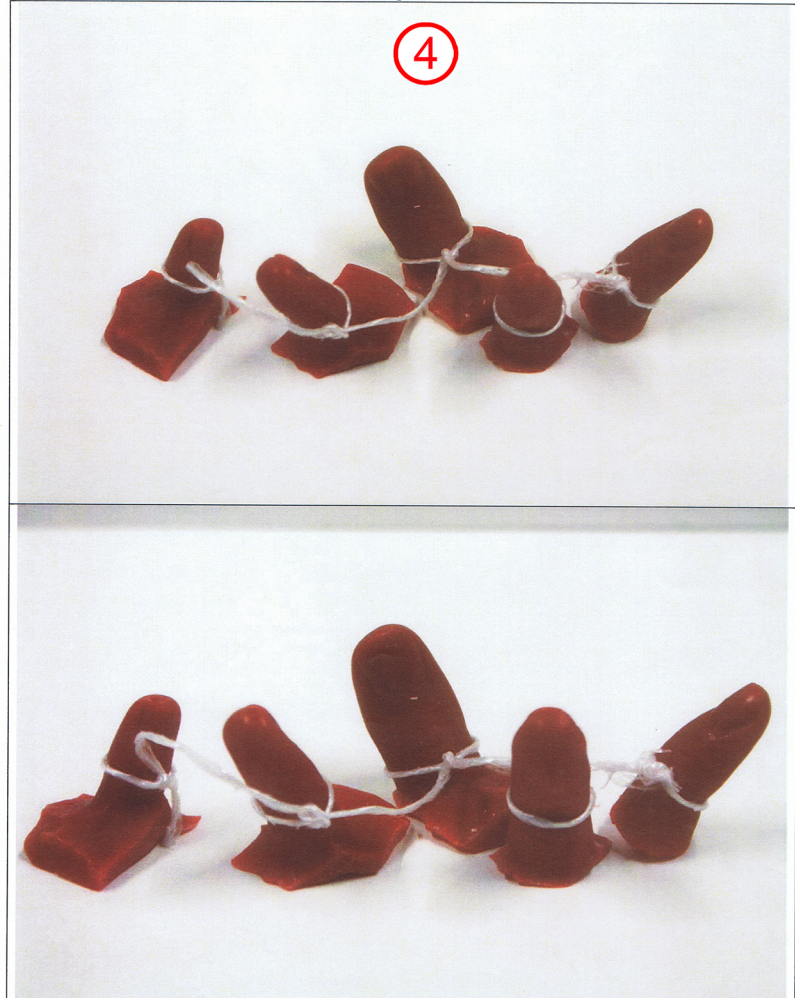
MAQUETTE ONE

3

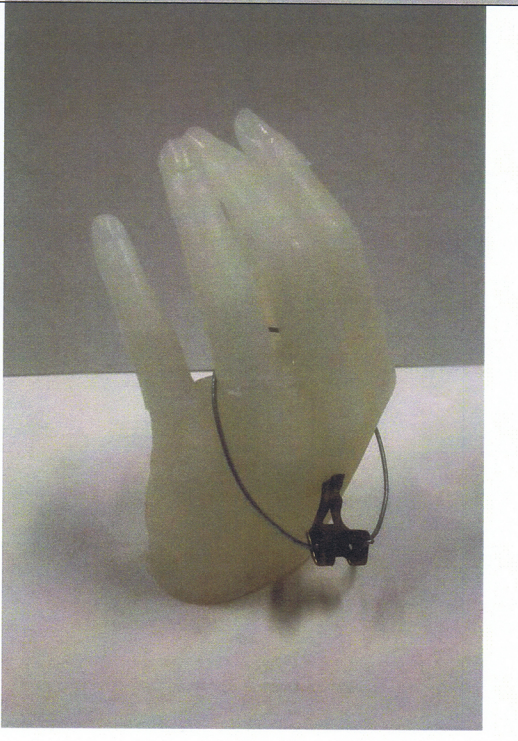
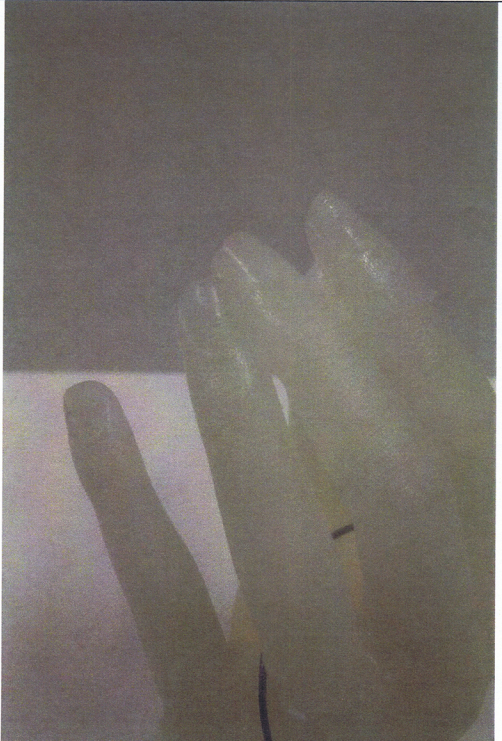
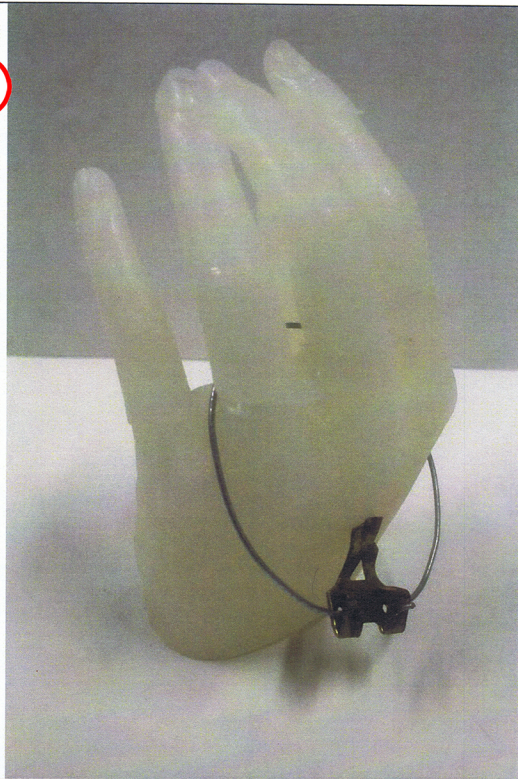
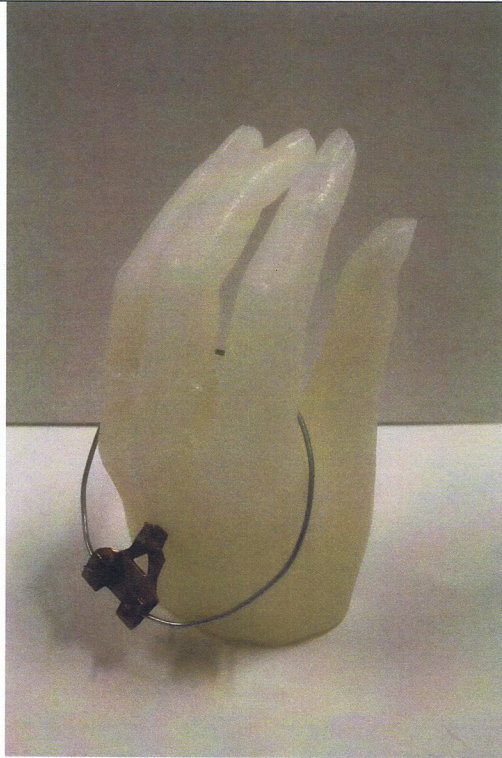


MAQUETTE TWO

4

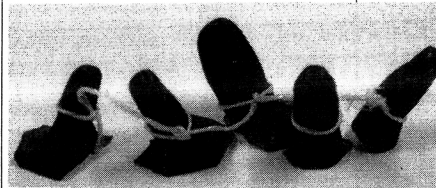


5



EVALUATE

MAQUETTE PHOTOGRAPH



FINAL IDEA 1

Draw and explain

This final idea is a mold of 2 wax hands one a mans one a womans, barbed wired together. the barbed wire resembles my object my bracelet which I got just before my parents split. the mans hand resembles my dad and the womans hand my mother. the bracelet resembles when they were last together and the reason it is barbed wire is because they didnt want to be together but they were because of me.

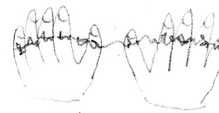
HOW COULD YOU EXTEND THE IDEA

Written
 1. could extend the idea by using 2 half hands one man, one woman. left and right.
 2. I could join them with barbed wire showing they are forced together.
 3. I could use skin tones with the wax to make it more realistic.



DRAWING OF NEW IDEA

Drawing



FINAL IDEA 2

Draw and explain

This final idea is made from cotton, and stuffed with cotton wool. My object is the ribbon around the soft hands wrist. This is because my object was a present so it is in the form of a ribbon. It is also showed as a ribbon because the artist model turns hard objects into soft objects. and my object is originally made from sterling silver.

LINKS TO ARTSIT MODELS

Richard Wentworth associates things that usually wouldn't associate in his works.

6