

1114 OBJECT 1

Associative qualities for me

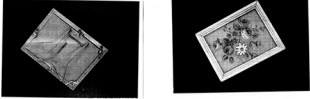
My object is a sample of 1940's French wallpaper which my mum bought for me a few years back from a shop called the Painted Room, which no longer exists. The shop was in Wellington when it first opened and I would go there sometimes after weekend football. Then it moved to larger premises in 2009 (in town).

The lady who ran the shop was really nice.

The wallpaper was hand painted and the flowers remind me of Kath Kidston. It's a bit messy which I like, cause it's not perfect.

I like that something as disposable as wall paper has been preserved for so long - rather than being ripped off or painted over like these days. It was probably kept because it was pretty. I keep lots of magazine spreads and pictures for the same reason. Paper is pretty basic but this was kept for the same reason I keep other bits of random paper.

The frame is worn and dirty and the back is a bit broken but that adds to the aesthetic. There is actually glass in the frame, rather than plastic, so it is a bit fragile.

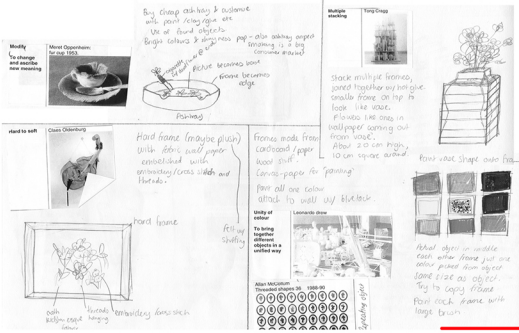
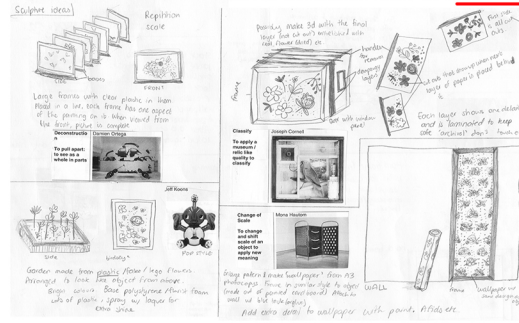


List of words the object provokes

- Rain
- Flowers
- Paris
- Vintage
- Prison
- Grandmother
- Vegan artist
- emphatic
- marble piece
- mission
- craft
- Safari

Associative qualities for others

- Flowers - vibrant / downy / roses
- Spain / Italy
- Party / night
- Old
- Tosh / Funk
- Sea - Diving
- Light
- 'Shabby chic'

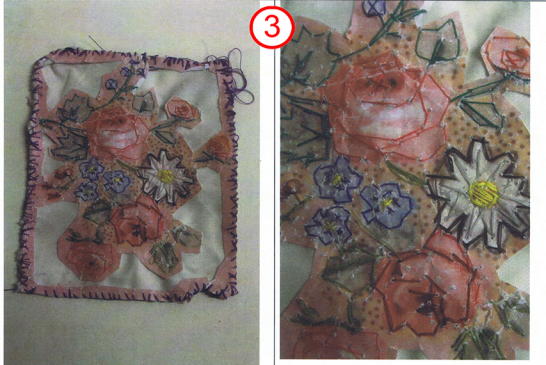


Sculpture:
Task 3: Part A: Analyse your ideas.

Your idea Draw it.	How does it relate to established practice?	How does it relate to your associative qualities?	Is the idea successful Explain your reasons?
	Reconstruction - separates each aspect from the painting and isolates them, like Damien Hirst's 'The Spot Paints'. Can call this 'pop' 'the object is'.	Didn't fringe work, like the glass pane. Hand painted, not perfect like old wallpaper.	Yes, as it combines the associative qualities and practices really well.
	Pop - everything is plastic. It's a pop. Bright colours. Plastic.	uses colour, procedure, toughness.	yes, as it is clearly 'pop'
	Change of Scale. Mark's station. Enlarged by plot, over 100%	Disposable ideas, making paper more than just.	Yes, because it goes with the established practice & my own qualities really well. Intending to look at.
	Classify / Joseph Cornell. Each aspect 'product', 'classified'	Reproduction, different layers.	Not really, because it's not the most challenging thing, and it isn't that meaningful. Not enough classification.
	Modesty / Pop style. Mixed appearance. Jeff Koons. Object quite modified. Colour one pop.	Tricky. Ignoring established words -	Yes as it sometimes the 2 established practices and the associative qualities well.
	Multiple Stacking. Tony Craig. Multiple stacking used in creation.	Frame idea - a bit broken.	Not as successful as others. I imagine it being a bit too clumsy to be a good sculpture, hard to make. 'Artwork in general'.
	Unity of colour. Repetition. Object. Looks like Damien Hirst's 'The Spot Paints'. Repeat, each aspect unity.	all the colours associated, aesthetic.	Yes because it combines most of the ideas well and draws ideas from the object, rather than just being exact copies.
	Hard to edit. Goes against 100% soft materials, not hard like actual object.	Un'perfect idea. 'prehis'	Yes as it embodies the hard to soft thing & is still obviously the object, not too obscure. Good idea how to make it also.

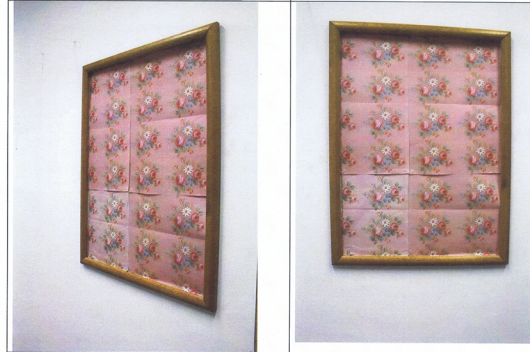
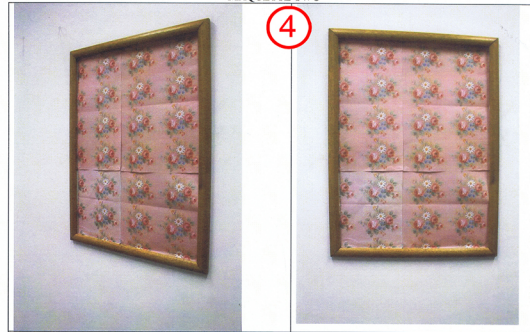
MAQUETTE ONE

3



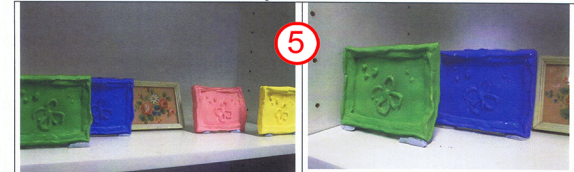
MAQUETTE TWO

4



MAQUETTE THREE

5



FINAL ONE

FINAL TWO

This sculpture ~~works~~ ~~with~~ the actual object as part of the work. It is 4 plaster casts as the base, each painted one colour. This marquet only has 4 colours, but the original idea would have 8 different frames made to reference the repetition and unity of colour - Leonardo drew the plaster casting was rather time consuming, as you could only use one a day. My clay mould I used to make the mould would've been made better to give a better result. Also the colours were a bit too bright when placed next to the actual wallpaper sample.

Evaluate and extend.

This sculpture worked okay, as it was quick to make but I didn't like the places where the paper joined. It looks a bit more like wrapping paper than wallpaper. I have bigger rolls of pink paper at home which I could stamp/print the floral detail onto, or combine the another convention and stick the flowers into. The frame was a found object, but I would make one for a larger work of art. As the frame was free standing for a mantle piece, I could make the same and make it free standing which would allow reference to the repetition and unity of colour.

This sculpture was the most time consuming of all 3, but I like how it turned out in the end. I could've made it better by using actual embroidery instead rather than just normal thread. If I remade it I would use smaller stitches and make a push frame, and make a budget more time for it. An embroidery hoop as a frame would also be cool.

Idea 1 one to different from my original plan, but I would make the extra frames slightly bigger, and they would be just plain rectangular shapes, rather than have raised frames and flower motifs on them.

Idea 2 creates a color blocked frame for the wallpaper sample. It doesn't use repetition as a practice, as it is only one object, but unity of colour is used.

Idea 3 is 9 plaster rectangles, all painted black, or white maybe, with a single artificial flower on the center of each one. It uses repetition, colour, and softness practices, in a grid or line pattern.

Both of these ideas use the change of scale convention and reference Mona Houtom's work. Idea 2 is more directly referencing as it is free standing. It would be harder to make though, because it would be assembled of many smaller parts, rather than just one length of paper.

Idea 1 Use actual flowers, or artificial ones, if actual ones are too delicate, and arrange them in a similar way to the original wallpaper print. Embroider/stick on the petals to add texture. Maybe embroider small bugs for extra detail. Flowers are delicate/fabric for softness.

Idea 2 Embroider/stick flowers onto a pillowcase, with the ruffled edge (same) turned to a different colour like in the wallpaper. Put over in 1" flat surface like Claus Oldenburg.

Idea One

grandmarsh/virgin suicides sturba
It plays with the disposable idea. I decided against using/making a frame to make it appear less like a painting because if there is a pointed thing in a frame it looks more murally than wall paper exque

Final Ideas

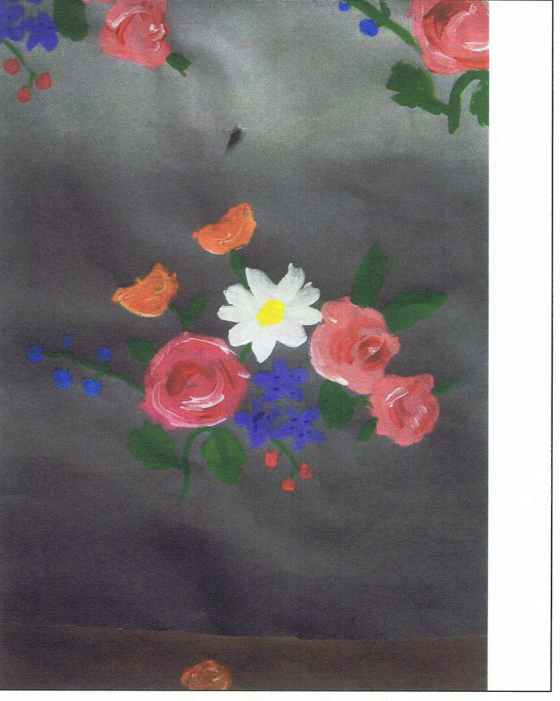
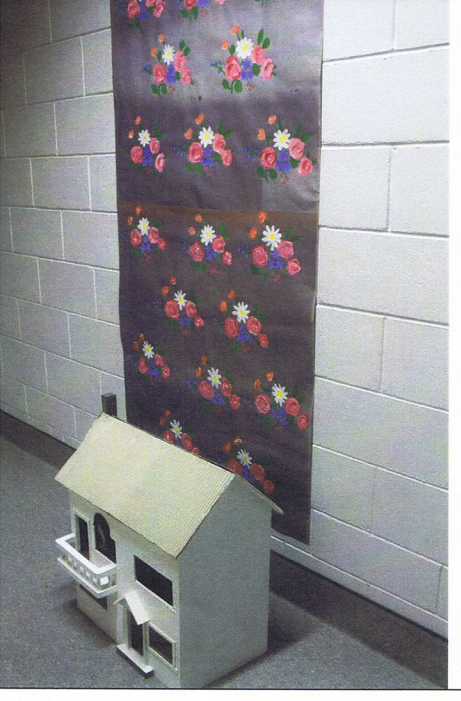
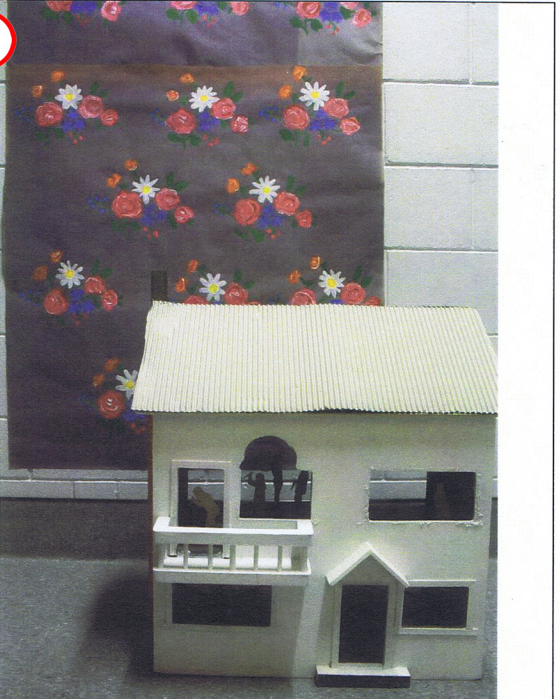
This idea is an enlargement of my marquet. It uses change of scale and repetition conventions. I will hand paint the flowers on large bits of paper so there is less joins, which was the main problem in the marquet. I thought I could involve a house, as it would show the change of scale even more and go with my object association words.

Idea two

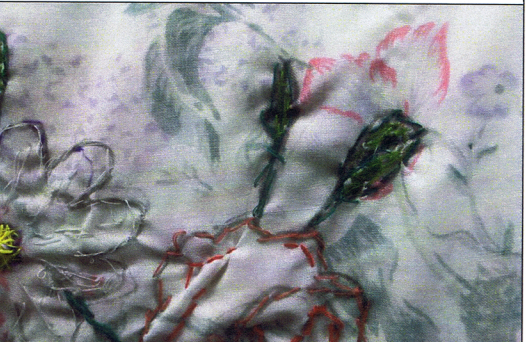
This idea is an enlargement of my marquet. It is more 3-d than my marquet and have a better frame. The ruffled edge of the pillowcase will be the 'frame' and I will stick the design in the middle.

It's a bit more raw/messy like the back of the marquet. Some of the threads sticking out reference Claus Oldenburg, and the fact that it is a pillow uses object association of things you use in house like a household object and the girly frilly thing. Also continues the floral motif. Pillowcase can get dirty/worn so that uses the frames idea. Colours are used similarly to the object so you can easily recognise it.

7



8



6

different perspective

close up