

3.1 - Art Design Essay

In this essay I will discuss the contrasts, methods and ideas, influences and the biography between three artists. The three artist models are Peony Yip, Matt Wisniewski and Stina Persson. These artists all have different techniques and styles that they incorporate in their art. They all use techniques such as colour, composition, imagery, constructed elements, text and message.



Peony Yip is an artist/illustrator who expresses her true passion and emotions through her art. She was born and raised in Hong Kong and is born on June 11, 1981. Her obsession with animals could relate to the Chinese horoscope. Peony got most of her influence from Helmo's Fashion Animals. Peony uses the concept from Helmo, and how he morphs humans in to people.

1

Peony drew light black characters who sort of morph into red animals. Her minimalist portraits of young women, rendered in pencil with animals in red, are fresh and are reflecting the wild nature of youthful souls. She aims to explore the relationship between human, animal and nature. The constant themes Peony Yip uses would be the theme of animals morphing in to humans because animals can help portray the idea of nature in her art.

Another theme she uses would be her theme of black and blue bruises. Peony Yip has a collection of works titled 'Brutal Honesty' which features people that seem to be victims of excessive violence. Peony Yip illustrates these pictures by using pencils to define her subjects/themes and watercolour to depict the bruises and injuries. Peony uses colour, composition, imagery and constructed elements to help portray her themes.

Her use of colour creates a dominant image that keeps your eyes looking at the image. She uses red in her morphing collection to show the humans (black pencil) morphing in to animals. With her composition she tends to place her work in the centre of a page, she lets the negative space create a type of border around her work that helps with her composition.

Her work is not tightly packed which gives her viewers more of a vocal point and doesn't lead their eyes off the painting. Peony Yip likes using original illustration which is a major part of the imagery in her works.

She uses pencil and watercolour to create her style in her designs. Peony Yip can relate her 'Brutal Honesty' collection with society because of the way she has shown abuse. She uses watercolour to make the bruises stand out, this then forms a link with the viewer and makes them think about abuse in society.

2



3

Matt Wisniewski is a web developer and collage artist based in Brooklyn, New York, United States of America. Matt uses a mix of fashion, beauty and the natural world. He combines high fashion photography and portraiture with collage. He uses Tumblr to source his images. When creating his work he first chooses a portrait to work with, he then try's various quick combinations of textures until something catches his eye. In Matts's collection 'Five minutes to Live' he depicts natural elements such as grainy texture of soil and the salty flow of ocean water which add visual effects to his work. A lot of Matt Wisniewski influence comes from Dany Peschl's Disturbation and Ben Sandler's Coincidence. These influences have created a great impact on Matts design work.

4

With Matt's use of colour you can see his detail and his extreme use of textures to create his designs. His composition leaves a lot of negative space around his work. This creates a border around his work. He usually places his work in the centre of the page, leaving a lot of space, so they aren't all tightly packed together. This then creates a focal point for the viewer to observe. Matt uses a lot of imagery in his work for example he uses digital processing, he uses effects and filters to create a certain texture in his design. He also uses original illustration to create his work. He uses a mix of photographs and collage to add his own twist. Matts work contains no text just images. A major theme in all of his work seems to be nature. This links with every piece of his work. There is no political or social link with his work, he creates what he likes not what society likes.

People often try to read meaning into his work but matt denies any political agenda – he just wants to "create something new". When asked if he is trying to raise environmental issues Matt said; *Not at all, I just enjoy the beauty of nature.* It could be argued that this reveals he celebrates nature as an issue in his art.

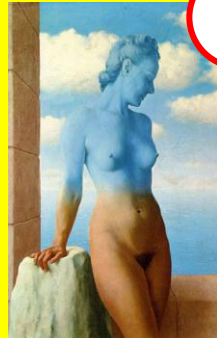
5

His works are similar to the photographer Jerry Uelsmann in the intermingling of the human body and the natural world. Both artists relate back to surrealist metamorphism nightmares.

6



Jerry Uelsmann



Rene Magritte