

1 My folio will explore the theme of racism and challenge the racial hierarchy of our community, addressing the dominance of the west and twisting standard racial norms, to object to the social status. Throughout the ages, extreme racial massacres such as Holocaust (1941) and American civil rights movement (1955), have tortured many physically and mentally. Unfortunately, racism is still evident in our society, although more subtle than the past.



Sculpture:



- gender based
- agony
- suffering (physically & emotionally)
- loss
- performance art
- trapped, blinded, captured.
- violence / death
- fear / dark
- despondent / dejected.
- figure.

< Jamie Antoni >



- depression
- outsider.
- discriminated
- fear / lonely
- dark / misery
- reclusive
- trapped.
- performance art
- violence involvement
- despondent / dejected
- figure.

< Paul McCarthy >

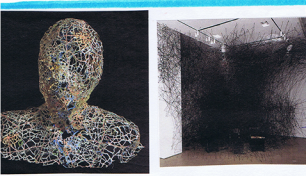
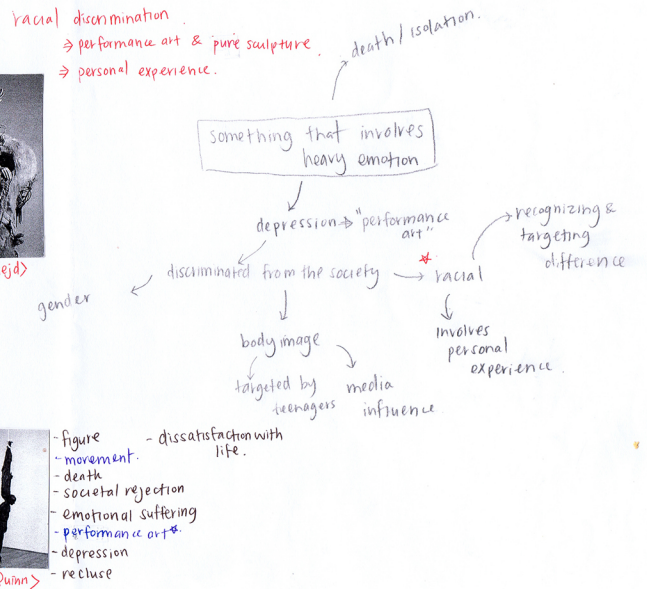


- fragmented body
- thinking / reflecting / recollecting
- blank, expressionless
- lonely
- subtlety
- outsider observing others.
- performance art

< Sarah Lucas >



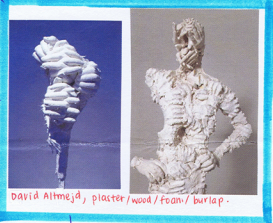
< David Altmejd >



The use of wire creates the feeling of trapness, being excluded from the society.

it also reflects the Holocaust; wire fences that were used to separate the Jews from the society, keeping one race together

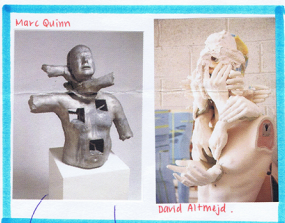
David Altmejd uses many different medias and material in order to achieve a certain feel to his work. However, although many of his art works were interesting, I though his work of hands, using simple materials like plaster & wood & putty, was appropriate for my folio.



David Altmejd, plaster/wood/foam/burlap.

The hands symbolises race. And the colour of the skin symbolises certain traits. Thus using hands in my folio would be appropriate to suggest racial elements

In order to communicate some feeling, heavy dark emotions, I thought it might be a good idea to use performance art. For example, I can base the performance art on the violence related to racism, or perform an situation where somebody feels when racially discriminated.

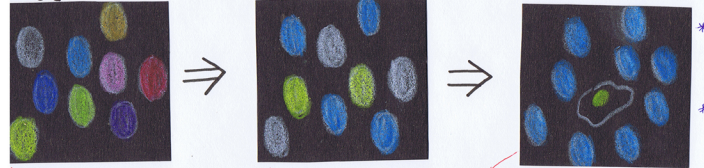


Marc Quinn

Incorporating hands with face and body, illustrates violence, and if colour is added it can successfully illustrate the theme of racism, depicting the idea of how one race is targeted.

THUMB-NAIL DRAWING

Eggs:



Introducing the theme: racism. Illustrate how people recognize and target the difference. Eggs are coloured all differently. Eggs represent people and the colours represent different race in our community. Then slowly the difference in colour is recognised and then one single egg is targeted, and physically victimised.

* make the eggs using clay or using real eggs, painting them.
 * kind of a performance art.

- 1 recognizing the difference.
- 2 discriminate
- 3 targeting (physically)

Face Paint:



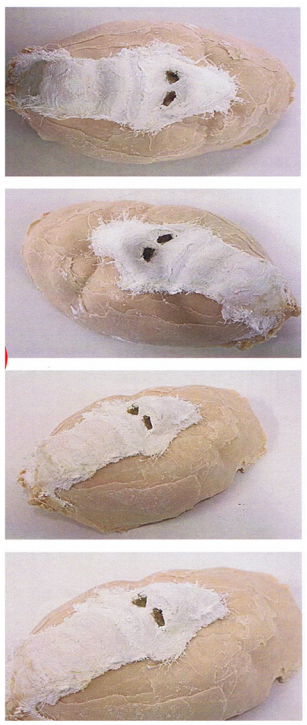
Through face-painting I can easily illustrate the difference in race and prove our natural instinct to distinguish two different colours and make us judge according to the colours. Colouring Asian face with white and colouring white face with yellow and comparing the difference in colour.

Hands: As well as face painting, hands also symbolise race. Using plaster to create hand-shaped sculpture and paint to colour, I produce a "multicultural community". Then using the hands (approximately 8-10 hands) I'll illustrate the idea of discrimination using hands to express certain feeling towards the excluded race.



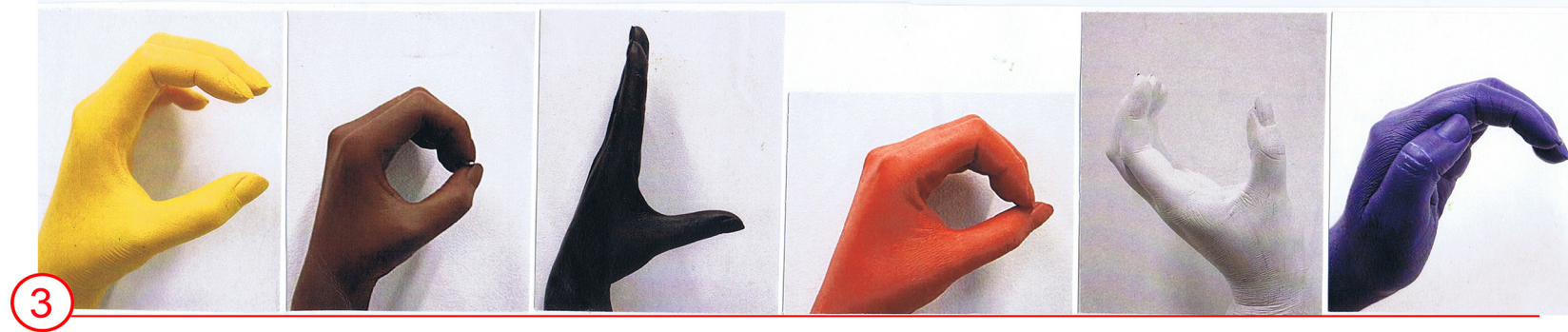
the hands will pose differently.

leading to destruction of one's life.



As mentioned before, it is part of human nature to possess the tendency to judge others based on their physical features. The face has most of the key features that people commonly comments on. Eyes, nose lips, skin colour; these are some of many body features that we generally comments on. My initial aim was to illustrate how physical features don't change who you are, proving how every one shares equal quality. Thus in order to illustrate obvious differences, I decided to use molding, creating definite and sharp shapes of the key physical features on the face.

I was going to mold two faces, Asian and white's, then paint the Asian face like white, using typical skin colour of white's and vice versa for the Asian face. However waxing the molded face was a problem. I had 2 failed waxed mold. However the one of the failed waxed face turned out to be a pleasant failure. I was able to create a new idea. Because I started waxing when the wax was still hot, when hardened, the wax started to break. However through this failed work, I have created a sculptural work which suggests destruction of one's life due to racism. The cracks literally illustrates the sense of destruction while the remaining white plaster signifies the desire to hide the physical features that people critically judge. Thus this sculptural work demonstrate a person, victim of racism, going through a hard time because he is judged by others on his physical features. Throughout re-creating the idea of this work, I came to realise that this work followed some of the aspects of David Altmejd's work, how he purposefully destroys some parts of his work to create the feeling of destruction, which I also depicted in this work.



3

It is our natural instinct to judge others based on certain physical features. Racism is when you recognise the difference in races, commonly through colours of the skin, and targets those who you believe are more inferior to yourself. Eyes, nose, height, skin colours are the common features that people judge others based on. In order to depict the main idea of racism, the central theme of my folio, I decided to paint my hands and gesture the word "colour". I chose to paint my own hand with 6 different colours, including the 4 colours that we stereotype to illustrate the 4 major races around the world. (eg. yellow to represent typical Asian skin colour). Colouring my own hands demonstrates my personal disapproval on racism. With sharp,

definite hand gestures and appropriate choice of colours, this work follows some of the works of David Altmejd and Marc Quinn. Both Altmejd and Quinn produce sharp gestural works that clearly express certain emotions. Thus, I followed these artists to create an obvious feeling of hate towards racism in my work. I think this is a positive sculpture work as it depicts the theme of racism, following some of the key elements of my artist models.



2

This sculptural work represents one's desire to live with a different skin colour in today's society, where racism is still evident. I thought the physical peeling of the "coloured" skin successfully portrayed the idea. However, this sculptural work lacked in some moody feel and thought more effect might be appropriate, to create some serious feel to

this work. Other than that, overall, I think this is an effective work which clearly portrays my personal disapproval on racism by including myself in the work; by making the work personal.

4



I personally think eggs symbolise life. I developed the idea of racism and decided to prove our tendency to recognise difference in race by judging on the colour of the skin. I chose the eggs to signify ourselves and the cage, our society. The cage also helps keeping the shape of eggs, so that the viewers can clearly see that these are eggs.

Firstly I painted the eggs with different colours so they are all coloured differently. Then gradually the eggs are painted with the same colour except one. The pictures of closed cage illustrates the motion of repetition of opening the cage and recognizing the different colours of the eggs. Through this, the viewers will find how they recognize the difference of each egg based on the colours they are painted with. Thus proving themselves of their subconscious instinct to judge people based on their colour of the skin. I think this sculptural work is positive as it clearly depicts my central theme of racism. Maybe

5

I can take this idea further and create a sculptural work that will illustrate miserable life of victim of racism and their destruction of life.