

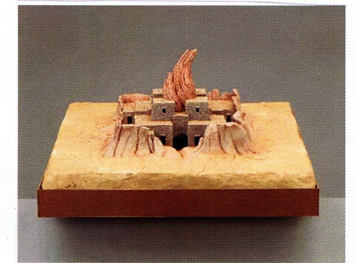
PROPOSAL

1 **Nature fighting back against the dominating world**

My work is about the idea of nature fighting back against the dominating world that we live in. With reference to the many environmental issues, the ruining of the rainforest, native bush and the forests. It will be a timeline starting with small things being overgrown and at the end, finish with a city that has been completely overrun with plantlife (trees, vines etc.)



Thomas Saraceno
 This work made with plastic, with a metal frame holding it together/outwards. It refers to a mass of bubbles which are suspended in the middle of a forest.



Charles Simonds
 This sculpture has an idea of an ancient ruin, with nature destroying it. The bit at the top of the building could be a plant or a tree, growing through the top.



Roxy Paine
 These trees by Roxy Paine play with the idea of Nature, or trees, having a mind of it's own. The trees are growing towards each other as if the way they have grown has nothing to do with where the sun is/have.

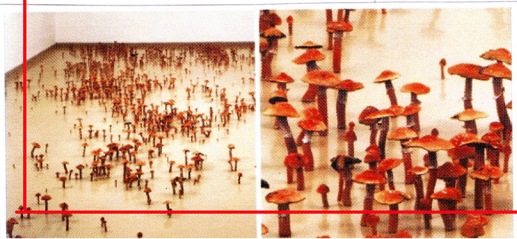


Nabeke Japemijento
 The idea of plantlife appearing in odd places such as in the gutters, outside the shops in a city is relative to my theme through the idea of overgrowth.



Roxy Paine Yutaka Same
 This image shows the work of Yutaka Same. It shows a spotless gallery with a few trees perfectly placed and formed. The work relate to my theme as it shows how much humans hold nature back just to make it look better.

I will use the idea of a field of mushrooms in my sculpture as mushrooms grow in damp places and they could appear in an alleyway. These mushrooms appear to be made out of clay or plasticene.



2



4

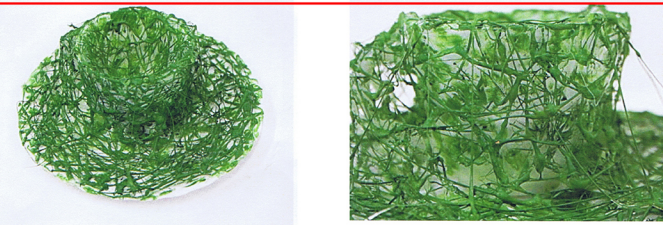
The materials I used were a tea cup, hot glue, paper and paint. they add meaning to the work, because the materials are all man-made and my theme is to do with nature fighting back against man-made objects and the human world, so the ideas conflict.

For this sculpture I started with a plain white teacup and I made the hot glue look like a vine was climbing up and around the tea-cup, then I painted it green and made some leaves out of paper, painted them and stuck them onto the cup.

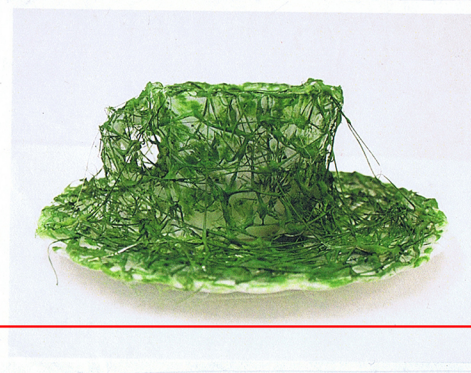
The initial drawing I made did not have the leaves on it, I decided to add them because the sculpture looked a bit boring without them.

Another theme could be environmental since that the world has

→ links to a work by Yutaka Sane



5



The materials I used in this sculpture were a cup, a plate, hot glue and paint. They add meaning to this work because the materials are all man-made and my theme is nature taking over or fighting back against the human world, the ideas conflict with each other.

I started with a plate and a cup, covered them with hot glue - completely and painted + green.

The initial idea was completely different, I was going to do a cup with a beanstalk growing out of it.



But I thought it would look unfinished.

Another theme could be total overgrowth of the whole world.

→ links to a work by Yutaka Sane



6

The materials I used in this sculpture were hot glue, paint, ~~and~~ vine

7

→ links to a work by Natalie Jeronijenko

