



National Certificate of Educational Achievement
TAUMATA MĀTAURANGA Ā-MOTU KUA TĀEA

Exemplar for Internal Achievement Standard

Visual Arts Level 3

This exemplar supports assessment against:

Achievement Standard 91454

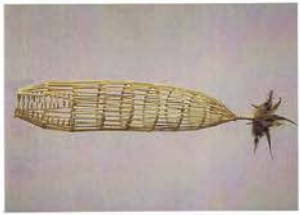
Systematically clarify ideas using drawing informed by established sculpture practice.

An annotated exemplar is an extract of student evidence, with a commentary, to explain key aspects of the standard. It assists teachers to make assessment judgements at the grade boundaries.

New Zealand Qualifications Authority

To support internal assessment

	Grade Boundary: Low Excellence
1.	<p>For Excellence, the student needs to systematically regenerate ideas using drawing informed by established sculpture practice.</p> <p>This involves critically analysing, evaluating, and revisiting concepts, subject matter, problems or situations from the student's previous artwork in order to re-form and extend ideas into new drawings informed by established practice.</p> <p>This student has generated a series of well resolved outcomes that build upon each other to regenerate ideas relating to <i>'Culture's relationship with sea life'</i> (1). The proposition is specific enough to be manageable, yet sufficiently broad to facilitate extension and regeneration.</p> <p>A series of appropriate artist models (2) are used to inform the student's own ideas rather than being explicitly emulated. This allows the student to show authentically independent advancement of personal ideas.</p> <p>The initial thematic and technical ideas are succinctly clarified in the eel trap works (3). The subsequent jar pieces (4) reform and extend ideas in terms of narrative and technical sophistication. The final sushi mat outcome (6) reintegrates the fish cut-outs from the eel traps while progressing the conceptual ideas in a new direction.</p> <p>Each stage of the practical investigation is informed by planning notes (5) and critical evaluation (7).</p> <p>For a more secure Excellence, the student could further advance the culinary, cultural and consumption ideas introduced in the final outcome (5). This may include a human interaction as a performative response to the thematic proposition.</p> <p>The student has also identified areas for technical refinement in this outcome (7).</p>



How successful was it?

This work was quite successful as it looks pretty much exact to what I wanted it to look. The trap inspired by papua new Guinea Tribe fishing traps was meant to look like a fish which I managed to achieve. The feather tail although looks reasonable and fish-like, I was not completely happy with it. I would have made it out of sticks and string like the trap.

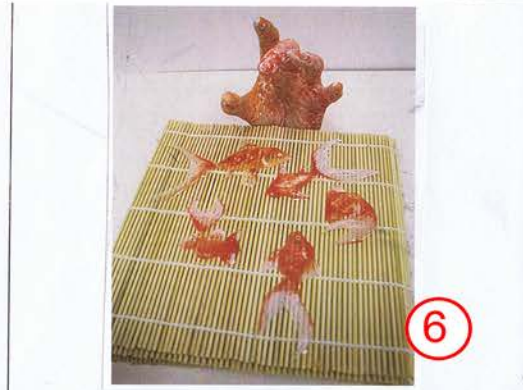
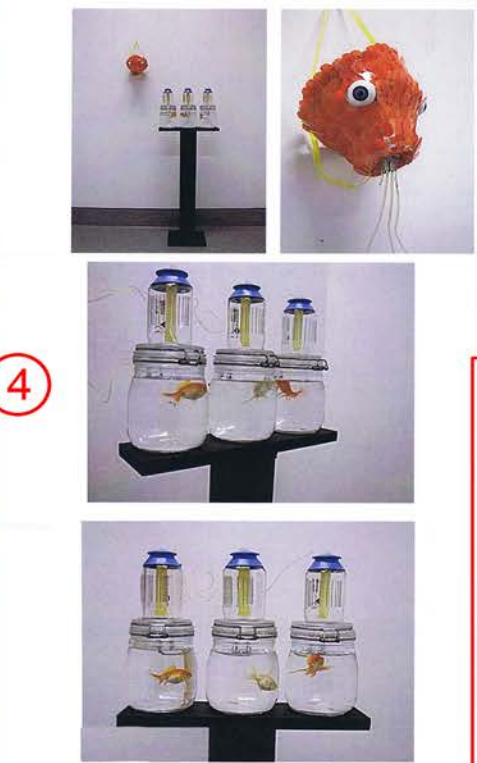
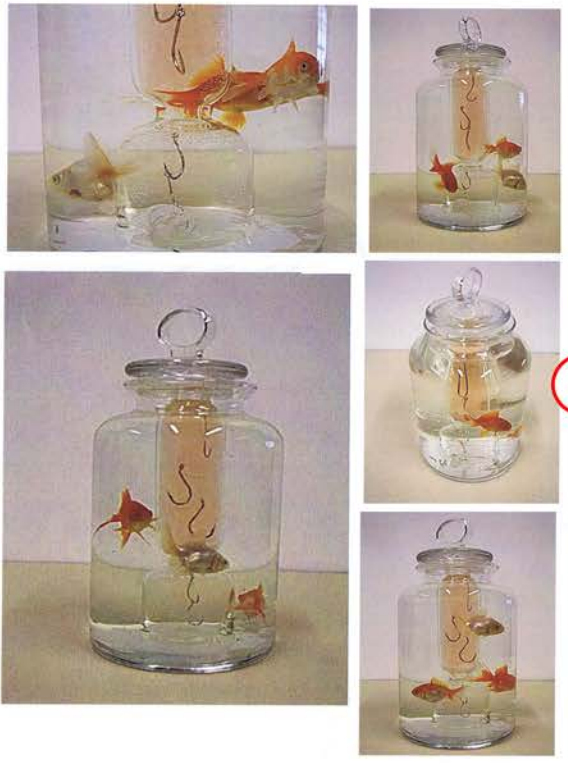
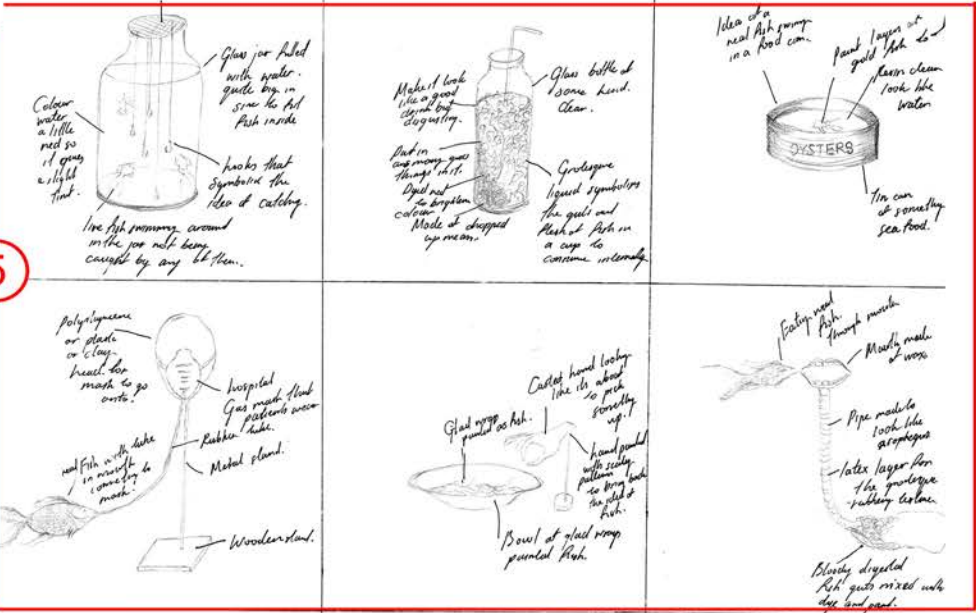
This work had the idea of entrapment, where a person catches a sea life to do what they want with it whether that was for eating, prawning or other. I made it in a fish shape to resemble my theme of sea life and to show that this trap was for fish and sea life. In the original proposal I did not intend to use wire but I used it to make the circular frame on the inside of the sculpture which shapes the sculpture.

How successful was it?

I am happy with aspects of my sculpture as it was very detailed and precise but some bits I was not satisfied with. The trap itself I was very happy with. As it looked like a trap and was very fine and detailed. But the fish I originally wanted to use paper, plastic fish or real fish but could not find it so I ended up having to use paper plate copies which look okay in the image but in life was not that spectacular.

This work had the idea of entrapment and collecting the sea life. This idea was clear because of the fish swimming out of the wall into the trap automatically you see that this trap is trying to catch the fish. For the wire I used the sculpture again I would have used real looking fish not paper and made multiple traps to create a wall full of traps so it will be more spectacular.

5



How successful was it?

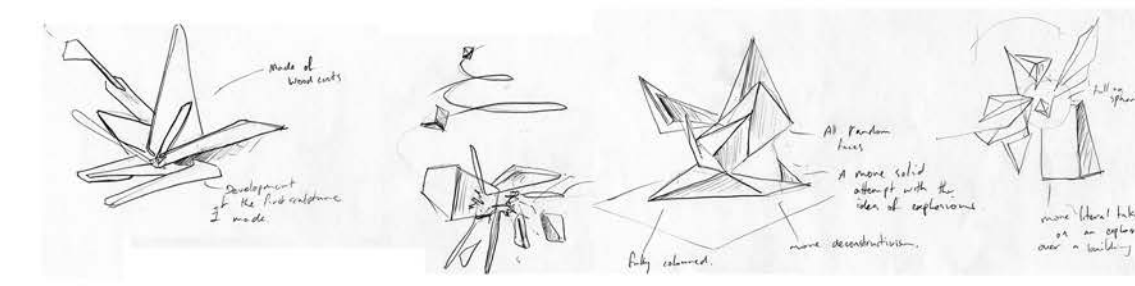
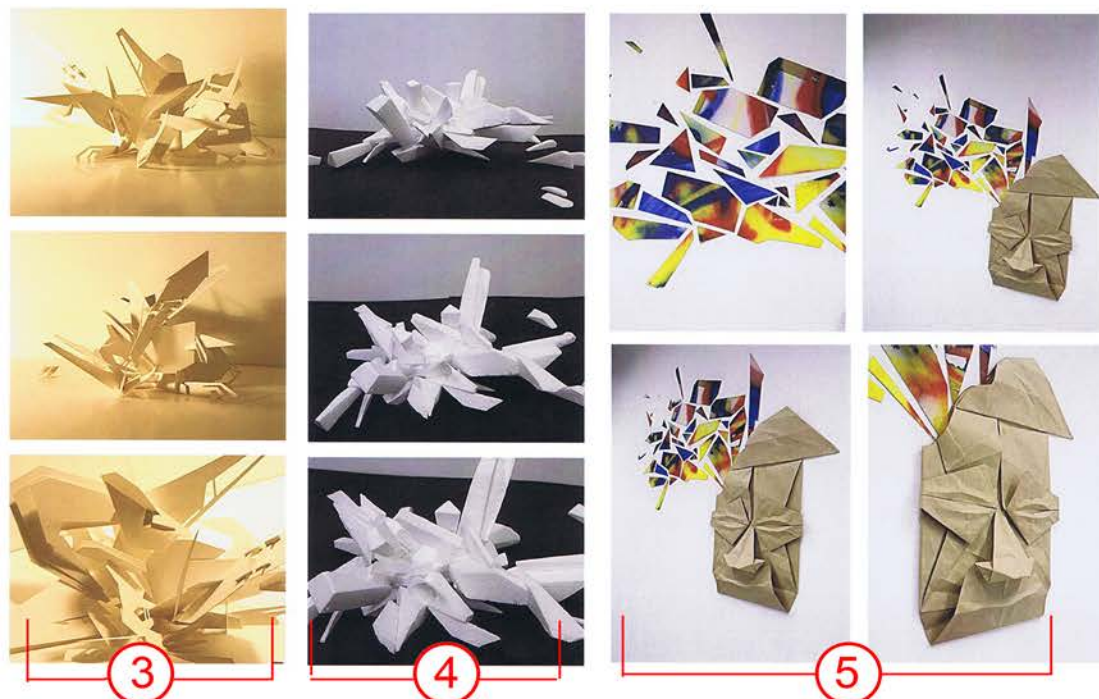
This was probably one of the closest sculpture to the plan drawings I had, although I made a few adjustments it was all for the better and turned out to be quite a successful work. The idea behind this sculpture was that you want to catch the fish but it impossible as the hooks and the fish are on a different jar, almost like when you go fishing and you don't catch anything & the fish are in a way murky part of the hooks that can't catch them. I like how the jar with the hooks and it is a different colour to the water in the main jar. By putting the smaller jar with the hooks in to the big jar with the fish it made a very interesting view from the outside.

How successful was it?

This sculpture was not as successful as the others but it was not really planned to be a full sculpture. I was just drawing fish on glad wrap and turned it into a sculpture. The aspects I like about this sculpture is the detail in the gold fish painting on glad wrap. I also quite like the contrast between the gold fish and the bamboo strips. I wasn't entirely happy with the hand as I wanted a more realistic painted scale, hand. So I did want to change anything it would have to be the caret hand. I could have used polyurethane to make shiny scale like paint strokes to create a more realistic scale like hand.

7

	Grade Boundary: High Merit
2.	<p>For Merit, the student needs to systematically extend ideas using drawing informed by established sculpture practice.</p> <p>This involves critically analysing, evaluating, and further developing concepts, subject matter, problems or situations, in drawings informed by established practice.</p> <p>This student has systematically explored issues of plane, mass and colour within the context of an exploding architectonic form. The artist models (2) are well chosen and highly appropriate to the particular methods and ideas being explored.</p> <p>The student clarifies planar (3) and mass (4) responses to established sculptural deconstructivism practices. The student has completed a formal analysis and evaluation of each work (7) to support the extension of ideas. For example, polychromatic elements of the third maquette (5) are combined with the architectural forms of the preceding work (3) (4) to produce the final outcome (6).</p> <p>To reach Excellence, the student could show regeneration by expanding either the depth or breadth of the proposition. In terms of depth the student could reconsider specific urban site proposition (1) by envisaging the outcomes (digitally) on a monumental scale.</p> <p>In terms of greater breadth the student could explore innovative or unexpected alternatives that build upon the outcomes presented in the final maquettes (6). The organic cybernetic aspect suggested in this work and the preceding outcome (5) could be reformed to be more pronounced and explicit.</p> <p>The notion of integrating architectural forms with graffiti colours is also a particularly promising innovation which provides opportunity for regeneration.</p>



Overview
 extremely successful sculpture that conveyed ideas aesthetically pleasing even with its chaotic shapes. Sharp explosion-esque of form and 3D form of Martin Boltger. Idea of paper morphing from 2D to 3D. Taken inspiration from street graffiti, hence the sharp lines and chaos that makes sense, meaning as you look at the sculpture (and) don't look out of place.

Overview
 Majority less successful than the first sculpture (on the left), messy and almost bland despite its complex shape. However it has architectural qualities, mainly due to the 3D form (unlike the first one) which is based off Zaha Hadid's highly conceptual. It looked at from architectural perspective, overall work makes more sense.

Overview
 Pretty successful execution of a sculpture based off my artist's North's street elements used to decorate the 'explosion' as well as Daim, the explosion 'radiating' out of the head could have been more spaced out but overall, nothing at all can be given. Continuation of the explosion idea this time exploring of one's creativity and mind. Getting a little more personal with the developing idea.

Positives
 - Highly complex, sharp, striking.
 - Successfully used artist influences.
 - Strong negative/positive space.
 - Overlapping of similar shapes to add more solid feel. Nice use of holes to create partial/negative face, and create curved shapes through light.

Positives
 - Somewhat deconstructive.
 - Negative/positive shape and space.
 - Architectural qualities.
 - changes for first sculpture into 3D form.
 - Has decent volume, compared to the first volume.

Positives
 - Explosion like fragments looks pleasing.
 - Origami face. Bright colors contrasting with the monochrome face. This sculpture more personally since this one is about ones mind.
 - Great contrast between the monochrome face and the bright fragments.

Negatives
 - could be bigger.
 - have more spreading out.
 - cleaner cuts to improve quality.
 - some parts were lacking in volume compared to other portions.

Negatives
 - messy polystyrene is not used cleanly, Has soft edges, not what I want.
 - incorporation of Martin Boltger is unsuccessful looks like much he would have used different material to create the same shape.

Negatives
 - North's facial art could have been used. Face may have been more 3D.
 - The face could have been more white instead of brown. The fragment should be 3D instead.



Positives
 - Very angular and sharp. Has a street art appeal due to its aggressive stance. Has layered segments to give it more a solid feel. I also like the exploded look that links to my theme genre of deconstruction. Another benefit that I have picked up by taking this sculpture is that the form of it imitates a sculpture like outline, so it has a painterly side to it. The shapes have graffiti influences more specifically from Daim. The sculpture is as though it is building on top of itself, hence the layer that it winds just it like quality.

Positives
 - I like the colorful aspect of this sculpture. Also it possess a form of architectural influence in an abstract way. I enjoy the random angles this sculpture is making making it less predictable. Looks like a highly conceptual building. Has a sleek and a little elegant feel even with the absence of round corners. The spray painted layers have the feel of the unformed world of street art like the first sculpture (see left) it is as though it has the ability to construct on top of itself.

Positives
 - The idea of interlinked shapes has been a major plus. The suspended shapes give off a fantasy type feel. The colours are incorporated into this sculpture to reinforce the idea of unformed creativity. This sculpture is definitely more 'organized' than the others. The 'links' between the elements have a similar look to piping in the urban world, which links back to my desired idea of choice, which is urban creativity.

Negatives
 - The sculpture lacks colour, giving it even with its angular forms a dull appearance. Also it is not the cleanest, having unwanted pencil marks and hot glue visible in certain points. The woodcuts are not straight having unwanted curves due to human error.

Negatives
 - It looks like it's been half-made incomplete. The joining edges of each face are visible, meaning it has been taped together that degrades the overall quality of this work. It was too small to have the effect. I wanted some parts linked out of place completely. The construction of the faces were too low at height to be fully appreciated, too many adding on of unnecessary shapes.

Negatives
 - The lines are not as tight as they should be. The holes are not as clean as they should be. The lines are not as tight as they should be. The holes are not as clean as they should be.

	Grade Boundary: Low Merit
3.	<p>For Merit, the student needs to systematically extend ideas using drawing informed by established sculpture practice.</p> <p>This involves critically analysing, evaluating, and further developing concepts, subject matter, problems or situations, in drawings informed by established practice.</p> <p>This student has investigated the theme of cosmetic surgery and the beauty myth (1). The choice of readymade strategies to investigate this proposition is well considered and sustained throughout the investigation.</p> <p>Interventionist (2) (3) and assemblage (5) strategies are explored. Aspects of both these approaches are integrated in the final work (6) which presents sufficient extension of conceptual and technical ideas for Merit. The level of extension in the final work is partly achieving by introducing the conceptual ideas and technical strategies of a new artist model (4).</p> <p>Critical analysis and evaluation is demonstrated in the advancement of pictorial ideas evident in the visual evidence as well as the written annotations that accompany each maquette.</p> <p>For a more secure Merit, the student could further extend ideas in terms of complexity or sophistication. This may mean integrating features or ideas of preceding work in subsequent outcomes.</p> <p>For example, the drawing elements (3) or caked makeup (6) could be applied to the Barbie <i>'Trophy Wife'</i> readymade (5). This would result in a more cohesive systematic investigation rather than a series of one-off outcomes connected by a common theme rather than building upon each other.</p>

Proposal

1

The theme for my sculptures is the perception of beauty. In today's society everyone is judged on their appearance, whether you admit or not you do it. Women feel pressured to be thin and to always look immaculate. Women are spending a fortune on clothes and make-up to 'improve their image' to make them feel more socially accepted. My sculptures will explore the idea of how things do not always appear as they seem, just because someone is beautiful on the outside does not mean they are on the inside. I will also incorporate terms such as 'turkey neck' and surgeries people under go to make them more beautiful.

Photoshop Touch Ups



Kim Kardashian has been photoshopped even though she is supposed to be a celebrity that is a positive role-model because she does have curves and is not scarily skinny.

WHICH ARTIST?



I like this person very much because it is how many women feel. People pretend to be who they are not to get recognised. I think it is important to show that to yourself otherwise you will be trying various solutions to improve your image. I want my sculptures to get the message across of how society is changing and how it's not for the better.

Armando Testa



I would like to produce a sculpture similar to this one. One side would be a before and after of a woman who has had acid checked on her. I would use a polythene mask and acid and substitute the skin for acid. Even though someone's appearance has changed on the outside does not make them less beautiful on the inside.

Richard Deacon



This artist has inspired me to produce a series of masks. One could include a mask with string, string lines around the eyes, lips, chin and forehead plus chest bones, showing where they would be acting as ornaments. Masks to be held up and pieces of 'surgery' seen. I found some like the picture on the left.

Architecture



- buildings
- windows
- columns
- repetitive lines

Michael Beutler

Furniture



- many rectangles
- cubist
- different shapes

Los Carpinteros

Biomorphic



- organic
- flowing
- abstract
- different parts
- different textures

Richard Deacon

Identity
Reputation
Transition

Clothing



- movement
- shape
- different materials
- different textures

Yinka Shonibare

Gender Based



- repetitive
- pattern

Yayoi Kusama

Gender Based



- face
- repetitive
- abstract
- different identity
- confusion
- real

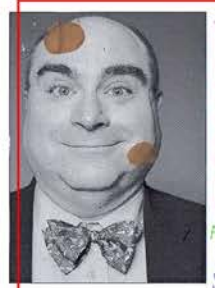
Chiharu Shiota

Cultural Diversity



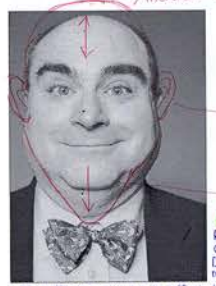
- children
- balloons
- abstract
- pattern on white
- emotional

Kara Walker



The use of foundation circles to symbolise tumors. I would make a face and attach material to show tumors and how some people judge you on your appearance. Some people are really self-conscious of moles, lumps and birthmarks on their face and body. I want to show the beauty of people even if they may have a birth defect or incurable condition.

Artist influence: Armando Testa
With using foundation to represent tumors it has an 'with Armando's sculpture with half of the human head normal and the other half dripping down. By using foundation to cover represent the tumor if candidates how people wear foundation to cover their imperfections on their face.

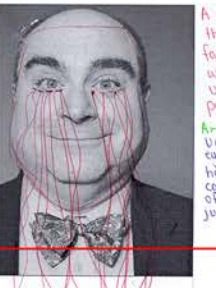


Some people are really self-conscious of their ears, forehead and size of their chin. So I could do a sculpture exaggerating facial features to make them unrealistic.

Artist model: Danielle Bueti
Relates to self-image with the proportion of his facial features being altered. Danielle has a art work with 'How much is my body worth? My possible sculpture links in with how society is affected by materialistic views and opinions. People try to change imperfections that are exaggerated and by peoples judgements.



A mask showing where plastic surgery is going to occur on the persons face. This shows one of the tasks done before surgery so the plastic surgeon can accurately perform the surgery. It also shows how people commonly want an eye lift, a nose job or botox to their lips to make them more plump.



A mask showing someone crying with the tears running down past their face because they are unsatisfied with their self-image. With the use of red thread it symbolises pain.

Artist influence: Yuk King Tan
Unlike Yuk King Tan from the lower eye lid I will stitch in red thread that hangs beneath the end of the mask not cover the whole face. Inferring the pain of someone crying because of peoples judgements.



ILLUSTRATE IDEAS - HOW WELL WAS IT DONE?
This sculpture was suppose to show the pre-operation stage with the surgical lines where the surgeon would cut on the clients face. I believe that this sculpture achieved this.

NEGATIVE / POSITIVE
The negative aspects of this sculpture how the paper is not smooth like I first wanted, but it shows the truth of how none is perfect. The positive aspects is that it photographed how I wanted it to look, I was concerned that sketching of the surgical lines would not be effective.

TECHNIQUE ISSUES
The paper mache dried bumpy not smooth.
FURTHER DEVELOPMENTS
Lots of stitched more surgical lines into the mask.



ILLUSTRATE IDEAS - HOW WELL WAS IT DONE?
To show how people recover after surgery with bandages wrapped over her wounds. To help prevent infection of the stitches.

NEGATIVE / POSITIVE
It does not look as real as much as I thought it would. It also helps show that even after surgery to enhance your beauty, you can still look not very as much just untidy not perfection as you would of wanted.

TECHNIQUE ISSUES
The bandages did not stick as smooth and flat like I initially thought they would.
FURTHER DEVELOPMENTS
Could of had bandages proceeding onto the wall and covering an area that actually held the mask onto the wall, to keep it secure. It would of added to the idea of healing wounds and keeping the stitches in place.



ILLUSTRATE IDEAS - HOW WELL WAS IT DONE?
The sculptures purpose to reveal sadness and insecurity of the persons thoughts within themselves. The red thread resembles sadness and suffering. This is my favorite sculpture out of the three.

NEGATIVE / POSITIVE
Not all of the red thread was the same length showing imperfection. The colour paper is not the same as the first one contrasting the fact that people have different skin tones.

TECHNIQUE ISSUES
The paper mache started flaking because I must not of used enough glue to stick it all together.
FURTHER DEVELOPMENTS
Attached more red thread under the eyes rather than minimal like I did now, but I did not want it to be over the top. I liked it simpler.

POSSIBLE SCULPTURES FOR THE NEXT STANDARD

1. Make a sculpture of a barbie doll head, covered/dressed in foundation.
2. A 'trophy wife' stick a barbie's head, arms and legs onto a trophy somehow.
3. Cut barbie dolls in half and cover them in foundation colour paint and stick them to wall, so they become a coat hanger/coat hooks.
4. Find a picture and multiply it by 8-10 and make the face hairier and hairier each face until it eventually covers the whole face. From eyebrows to the skin covered in hair like strokes by a black ink pen.
5. Make a trophy and increase the handles to look like ears, a body part that people change, by having them pinned back. A body feature people can gain the nickname 'trophy' by the largeness of their ears.

ANALYSING SCULPTURE WORKS

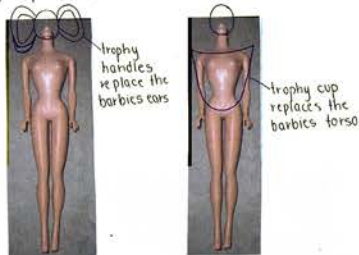
2

DRAWINGS

Drawing 1.



Make a 'trophy wife'
Use a trophy and barbie doll
Attach the head, arms and legs to the trophy, so the arms of the barbie replace the handles and the cup replaces the barbie's torso.



Drawing 3.

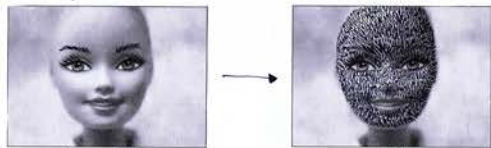


Foundation covered barbie doll^{head} with it covering the ground beneath it.
Drawing the face of the barbie doll so it becomes unrecognisable.



foundation like paint drawing the face
cover the face in wax to melt the 'perfect' features
artist influence: Ewa Mos and Armando Testa

Drawing 2.

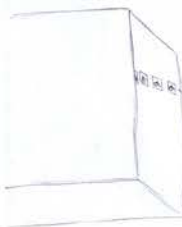


from this to this

10 faces, same face. Add a new element each time.
Start: hairy eyebrows → eyelashes → upper lip → ears → chin → nose → cheeks → spread more and more until face is covered.

artist model: Ewa Mos

Drawing 4.



barbie doll, from waist upwards glued to cardboard and stuck on the wall facing head outwards. Some goes for the waist down.

Cover the doll and cardboard in foundation like coloured paint. Placing the dolls coming out from the wall makes them sort of coat hanger. Making that even useless barbie dolls can become useful if you modify them slightly.

ss R-i ©



5



This sculpture is obvious in what I want it to portray a 'trophy wife'. I was not a difficult sculpture to make and I had no technical issues. It represents the idea of a man marrying a perfect looking woman to show off and what is more perfect than a barbie doll? It expresses and represents the idea of a materialistic world with a 'trophy wife' typically marrying a man with a lot of money who will give in to their every need. They marry men that will never be short of cash. To improve this I could have made a family of perfect sons and daughters with an old man to be the husband who is only interested in showing his wife off his arm.

ANALYSING SCULPTURE



3

I based this sculpture on the artist Ewa Mos but instead of using four different pictures and doing different drawing techniques I used the same face of a pretty girl and made her more hairy each face changed and added a new element. I started with the eyebrows, to eyelashes → upper lip → ear hair → chin → nose → cheeks → spread all over her face. Over the 10 faces I made the hair longer and more wispy as I went. I do like this sculpture as it emphasises that how does grow on woman's faces, even if you can't see it you can't escape it. No one is perfect and some girls need to be reassured of that. Behind all of the make-up there is still hair even with the prettiest of them, they are all the same. I could improve this by completing another series because it is the same for them, if not even worse.



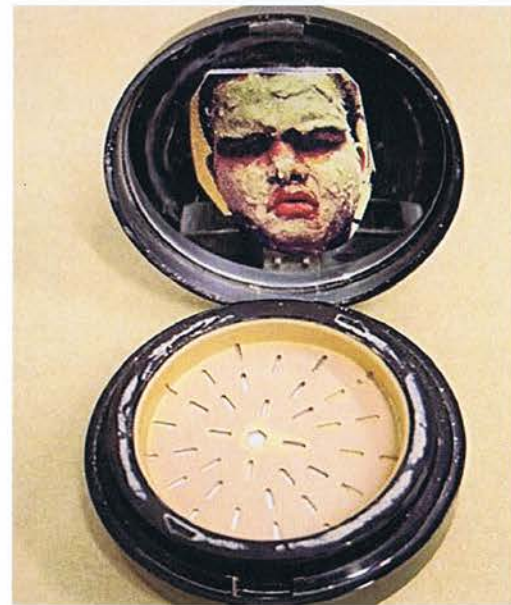
4

POSSIBLE SCULPTURES FOR THE NEXT STANDARD

Artist model - Michael Mapes
Do a series of the same technique with pictures of both male and female. Using old clear make-up packages so you can still see the image / section through the plastic



6



	Grade Boundary: High Achieved
4.	<p>For Achieved, the student needs to systematically clarify ideas using drawing informed by established sculpture practice.</p> <p>This involves analysing, reflecting on, and further developing concepts, subject matter, problems or situations in drawings informed by established practice.</p> <p>This student has clarified ideas around the use of colour to represent how people are judged by their ethnicity. The student explores a range of different conceptual and technical approaches to the theme.</p> <p>The hand series (3) could be read as a generic celebration of ethnic diversity, while the latex peeling skin (2) speaks more directly about the issue of alternating identity. The egg concept (4) potentially implies a range of metaphorical associations (new life, peas in a pod, genetic engineering, supermarket standardisation) to communicate the idea of progressive racial homogenising.</p> <p>This final outcome (4) succinctly clarifies the ideas of the progressive reduction of cultural diversity.</p> <p>To reach Merit, the student could show extension by building upon a clarified outcome in a new direction. This could include exploring alternative responses to the underpinning ideas. For example, the student's idea to illustrate the life of the victims of racism could be explored.</p> <p>Alternatively, the peeling skin concept (2) may also provide new directions to extend ideas into time-based or performance practices.</p>

1

My folio will explore the theme of racism and challenge the racial hierarchy of our community, addressing the dominance of the west and twisting standard racial norms, to object to the social status. Throughout the ages, extreme racial massacres such as Holocaust (1941) and American civil rights movement (1955), have tortured many physically and mentally. Unfortunately, racism is still evident in our society, although more subtle than the past.



Sculpture:



- gender based
- fear/dark
- agony
- despondent/dejected
- suffering (physically - movement & emotionally) - figure
- loss
- performance art
- trapped, blinded, captured.
- violence/death

<Julie Antoni>



- depression
- outsider.
- discriminated
- fear/lonely
- dark/misery
- reclusive
- trapped.
- performance
- performance art
- violence involvement
- despondent/dejected
- figure.

<Paul M. Carthy>



- fragmented body
- thinking/reflecting/reflecting
- blank, expressionless
- lonely
- subtlety
- outsider observing others.
- performance art

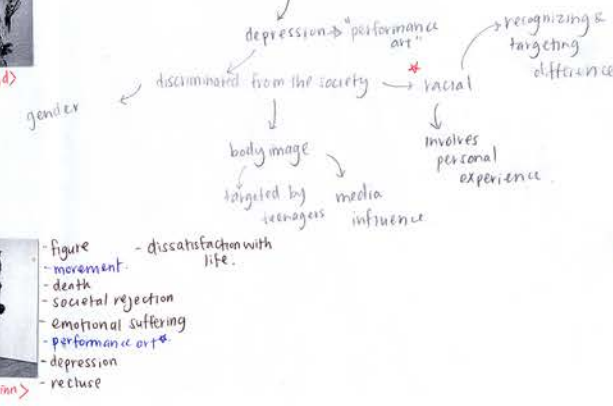
<Sarah Lucas>



<David Altmejd>

racial discrimination
 → performance art & pure sculpture
 → personal experience.

Something that involves heavy emotion



Reflecting on such historical events and incorporating my own experience, I will aim to produce a folio that portrays what it is like to be the victim of racism.

David Altmejd uses many different medias and material in order to achieve a certain feel to his work. However, although many of his art works were interesting, I though his work of hands, using simple materials like plaster & wood & wire, but appropriate for my folio.



David Altmejd, plaster/wood/paper/wire.



Marc Quinn, David Altmejd.

The hands symbolise race. And the colour of the skin symbolises certain traits. Thus using hands in my folio would be appropriate to suggest racial elements.



<Julie Antoni>

In order to communicate some feeling being dark emotions, I thought it might be a good idea to use performance art. For example, I can base the performance art on the racism related to racism, or perform an situation where somebody falls when visually discriminated.

Incorporating hands with face and body, illustrates violence, and if colour is added it can successfully illustrate the theme of racism, depicting the idea of how one race is targeted.

THUMB-NAIL DRAWING

Eggs:



Introducing the theme: racism. Illustrate how people recognize and target the difference.
 Eggs are coloured all differently. Eggs represent people and the colours represent different race in our community.
 * make the eggs using clay or using real eggs, painting them.
 * kind of a performance art.
 and then one single egg is targeted, and physically victimised.

Face paint:



Through face-painting I can easily illustrate the difference in race and prove our natural instinct to distinguish two different colours and make us judge according to the colours.
 colouring Asian face with white and colouring white face with yellow and comparing the difference in colour.

Hands:

As well as face painting, hands also symbolise race. Using plaster to create hand-shaped sculpture and paint to colour, I produce a "multicultural community". Then using the hands (approximately 8-10 hands) I'll illustrate the idea of discrimination using hands to express certain feeling towards the excluded race.



the hands will pose differently.

leading to destruction of one's life.

- 1 recognizing the difference.
- 2 discriminate
- 3 targeting (physically)



As mentioned before, it is part of human nature to possess the tendency to judge others based on their physical features. The face has most of the key features that people commonly comments on. Eyes, nose, lips, skin colour; these are some of many body features that we generally comments on. My initial aim was to illustrate how physical features don't change who you are, proving how every one shares equal quality. Thus in order to illustrate obvious differences, I decided to use molding, creating definite and sharp shapes of the key physical features on the face.

I was going to mold two faces, Asian and white's, then paint the Asian face like white, using typical skin colour of white's and vice versa for the Asian face. However waxing the molded face was a problem. I had 2 failed waxed mold. However the one of the failed waxed face turned out to be a pleasant failure. I was able to create a new idea. Because I started waxing when the wax was still hot, when hardened, the wax started to break. However through this failed work, I have created a sculptural work which suggests destruction of one's life due to racism. The cracks literally illustrates the sense of destruction while the remaining white plaster signifies the desire to hide the physical features that people critically judge. Thus this sculptural work demonstrate a person, victim of racism, going through a hard time because he is judged by others on his physical features. Throughout re-creating the idea of this work, I came to realise that this work followed some of the aspects of David Altmejd's work, how he purposefully destroys some parts of his work to create the feeling of destruction, which I also depicted in this work.



It is our natural instinct to judge others based on certain physical features. Racism is when you recognise the difference in races, commonly through colours of the skin, and targets those who you believe are more inferior to yourself. Eyes, nose, height, skin colours are the common features that people judge others based on. In order to depict the main idea of racism, the central theme of my folio, I decided to paint my hands and gesture the word "colour". I chose to paint my own hand with 6 different colours, including the 4 colours that we stereotype to illustrate the 4 major races around the world. (eg yellow to represent typical Asian skin colour). Colouring my own hands demonstrates my personal disapproval on racism. With sharp,

definite hand gestures and appropriate choice of colours, this work follows some of the works of David Altmejd and Marc Quinn. Both Altmejd and Quinn produce sharp gestural works that clearly express certain emotions. Thus, I followed these artists to create an obvious feeling of hate towards racism in my work. I think this is a positive sculpture work as it depicts the theme of racism, following some of the key elements of my artist models.



This sculptural work represents one's desire to live with a different skin colour in today's society, where racism is still evident. I thought the physical peeling of the "coloured" skin successfully portrayed the idea. However, this sculptural work lacked in some moody feel and thought more effect might be appropriate, to create some serious feel to

this work. Other than that, overall, I think this is an effective work which clearly portrays my personal disapproval on racism by including myself in the work; by making the work personal.



I personally think eggs symbolise life. I developed the idea of racism and decided to prove our tendency to recognise difference in race by judging on the colour of the skin. I chose the eggs to signify ourselves and the cage, our society. The cage also helps keeping the shape of eggs, so that the viewers can clearly see that these are eggs.

Firstly I painted the eggs with different colours so they are all coloured differently. Then gradually the eggs are painted with the same colour except one. The pictures of closed cage illustrates the motion of repetition of opening the cage and recognizing the different colours of the eggs. Through this, the viewers will find how they recognize the difference of each egg based on the colours they are painted with. Thus proving themselves of their subconscious instinct to judge people based on their colour of the skin. I think this sculptural work is positive as it clearly depicts my central theme of racism. Maybe

I can take this idea further and create a sculptural work that will illustrate miserable life of victim of racism and their destruction of life.

	Grade Boundary: Low Achieved
5.	<p>For Achieved, the student needs to systematically clarify ideas using drawing informed by established sculpture practice.</p> <p>This involves analysing, reflecting on, and further developing concepts, subject matter, problems or situations in drawings informed by established practice.</p> <p>This student has begun with the proposition of '<i>nature fighting back against the dominating world</i>' (1) which is sustained throughout the investigation. The final outcome (6) builds upon the two preceding works (4) (5) to enhance the effectiveness of the idea. This demonstrates that the conceptual and technical approaches have both been reflected upon and further developed.</p> <p>The systematic nature of the investigation is clearly demonstrated in the artist model research (2) and concept drawing stages that precede the maquette making (4) (5) (6) and supporting annotations (7).</p> <p>For a more secure Achieved, the student could further advance the ideas by reviewing the generated outcomes, or by introducing of alternative approaches to the proposition. The reliance on teacups and hot glue could be enhanced with inclusion of additional domestic or organic elements. A stronger clarified outcome would build upon the '<i>nature fighting back</i>' narrative and the environmental installation potential of the approach.</p> <p>The accompanying annotations (7), which tend to describe appearances or summarise the process, could provide more insightful comments that propose refinements or new directions. This would enhance the student's opportunity to show that the student has clarified the initial proposition in a more significant and sustained way.</p>

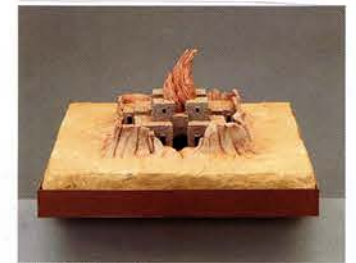
PROPOSAL

① Nature fighting back against the dominating world

My work is about the idea of what we live in. With reference to the many environmental issues, the ruining of the rainforest, native bush and the forests. It will be a timeline starting with small things being overgrown and at the end, finish with a city that has been completely overrun with plantlife (trees, vines etc.)



Thomas Sarcos
 This work made with plastic, with a metal frame holding it together/outwards. It refers to a mass of bubbles which are suspended in the middle of a forest.



Charles Simonds
 This sculpture has an idea of an ancient ruin, with nature destroying it. The bit at the top of the building could be a plant or a tree, growing through the top.



Rovy Paine
 These trees by Rovy Paine play with the idea of Nature, or trees, having a mind of it's own. These trees are growing towards each other as if the way they have grown has nothing to do with where the sun is/haze.



Naruse Joremijono
 The idea of plantlife appearing in odd places such as in the gutters, outside the shops in a city is relative to my theme through the idea of overgrowth.

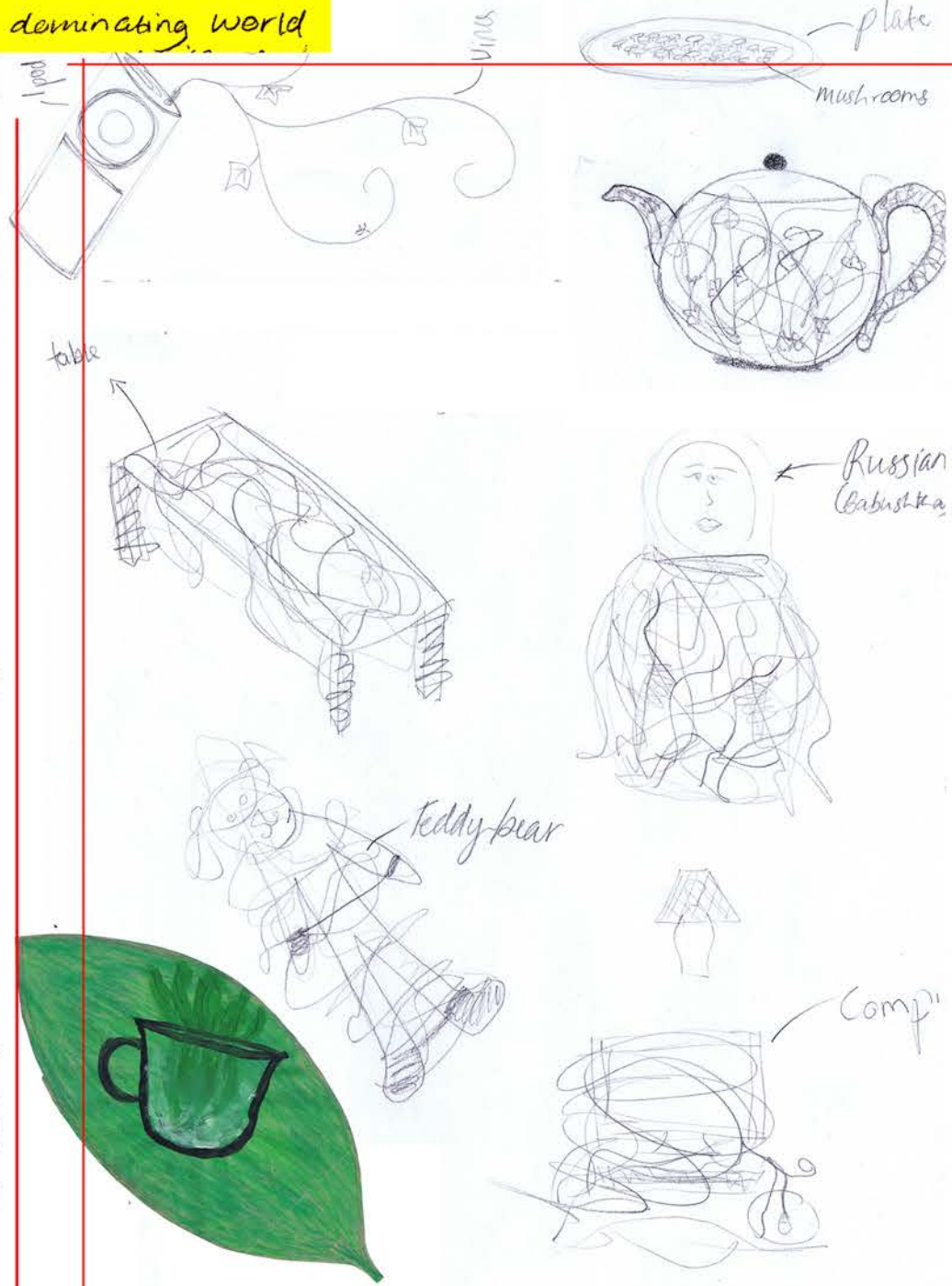


Rovy Paine Yutaka Same
 This image shows the work of Yutaka Same. It shows a spotless gallery with a few trees perfectly placed and formed. The work relate to my theme as it shows how much humans hold nature back just to make it look better.

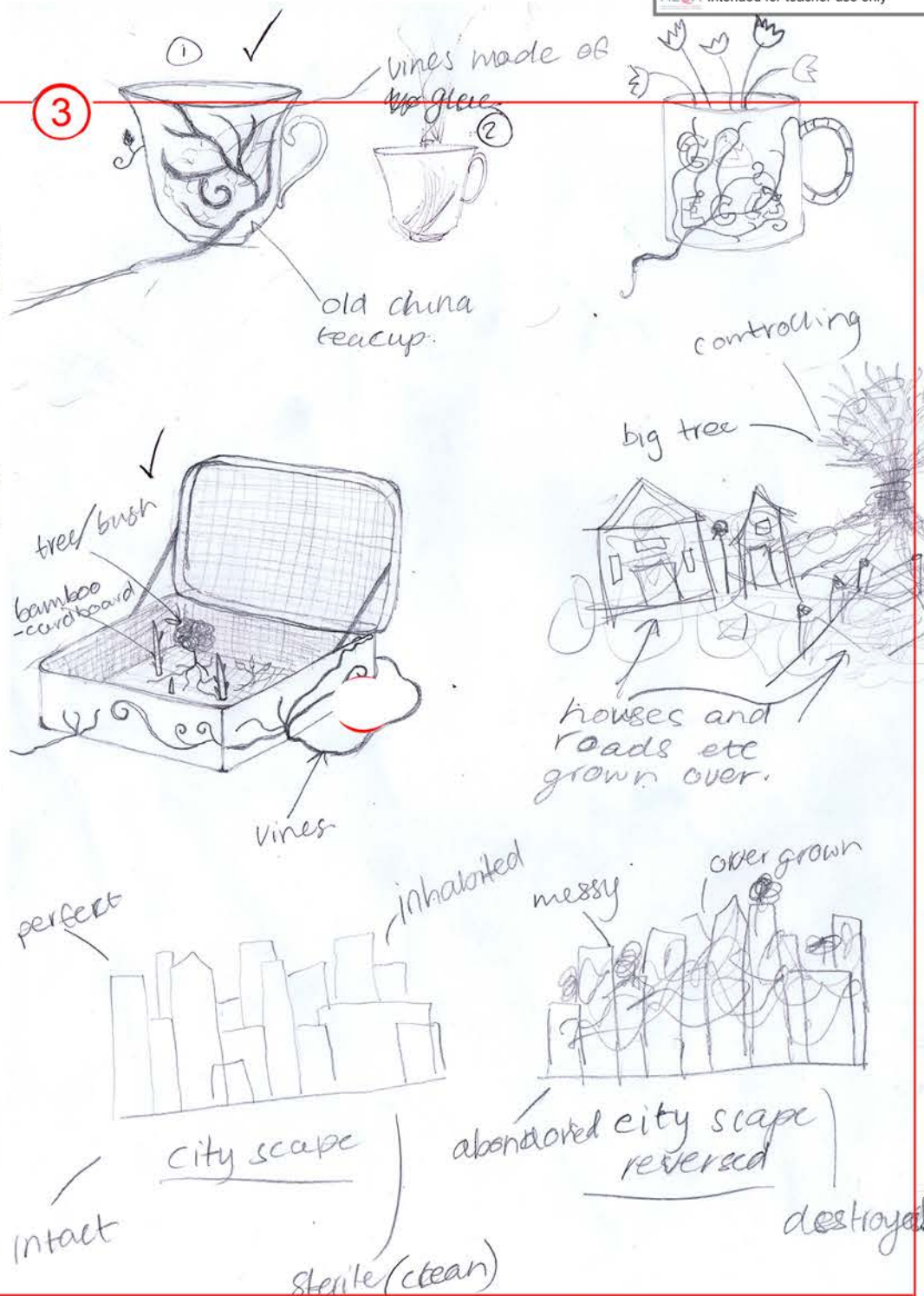
I will use the idea of a field of mushroom in my sculpture as mushrooms grow in damp places and they could appear in an alleyway. These mushrooms appear to be made out of clay or plastic scene.



②

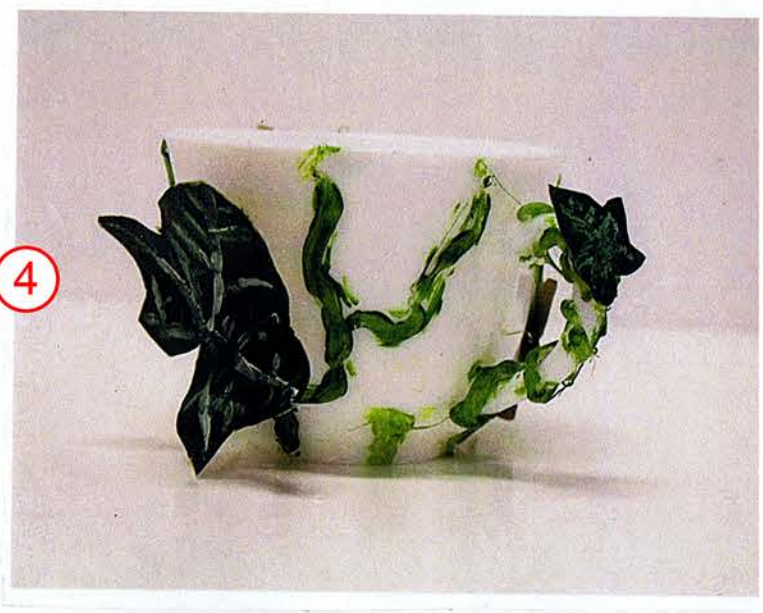


③





4



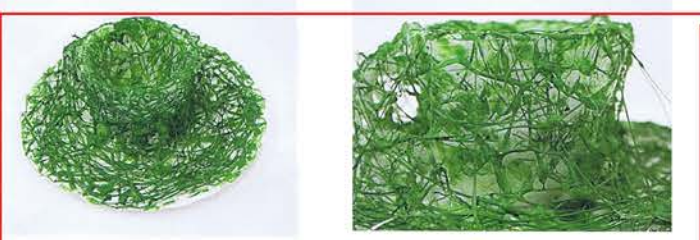
The materials I used were a tea cup, hot glue, paper and paint. they add meaning to the work, because the materials are all man-made and my theme is to do with nature fighting back against man-made objects and the human world, so the ideas conflict.

For this sculpture I started with a plain white teacup and I made the hot glue look like a vine was climbing up and around the tea-cup. then I painted it green and made some leaves out of paper, painted them and stuck them onto the cup.

The initial drawing I made did not have the leaves on it, I decided to add them because the sculpture looked a bit boring without them.

Another theme could be environmental since that the world has

→ links to a work by Yutaka Sane



5



The materials I used in this sculpture were a cup, a plate, hot glue and paint. They add meaning to this work because the materials are all man-made and my theme is nature taking over or fighting back against the human world, the ideas conflict with each other.

I started with a plate and a cup, covered them with hot glue - completely and painted it green.

The initial idea was completely different, I was going to do a cup with a beanstalk growing out of it.

But I thought it would look unfinished.

Another theme could be total overgrowth of the whole world.

→ links to a work by Yutaka Sane

6

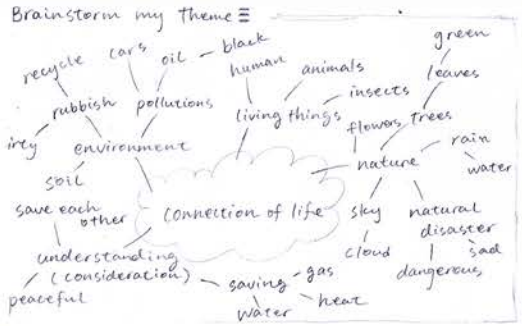


The materials I used in this sculpture were hot glue, paint, ~~and~~ vine

7

→ links to a work by Natalie Jeronijenko

	Grade Boundary: High Not Achieved
6.	<p>For Achieved, the student needs to systematically clarify ideas using drawing informed by established sculpture practice.</p> <p>This involves analysing, reflecting on, and further developing concepts, subject matter, problems or situations in drawings informed by established practice.</p> <p>This student has begun to develop work in response to the proposition of the connection between living things (1). This provides a set of conceptual parameters with sufficient room to explore a range of visual responses. The developmental approach is systematic in the use of concept drawing (3), maquette making (4) (5) (7) and reflective (6) stages.</p> <p>Established sculptural practice in terms of the primary artist model Jackie Brookner (2) is clearly referenced in the sculptural outcomes. The annotations (6) begin to identify the positive and negative aspects of the sculptural outcomes</p> <p>To reach Achieved, the student would need to fully clarify the conceptual and technical aspects of the sculptural outcomes. This may include using some of the reflective comments (6a) to inform a revised version of the sculptural outcomes.</p> <p>The student could also identify other ideas in the conceptual drawings that offer potential for richer and more significant outcomes such as the hand emerging from the land (3a). This idea offers opportunity for multiple readings, and provides a fabrication challenge that aligns appropriately with the curriculum level expectations of the standard.</p>



My sculpture folio is going to represent the connection of life by showing that animals, human (living things) and the environment in nature are connecting to each other by the meaning that they relate to each other in life.

The theme "connection of life" also means at the nature creates us, human and animals, and we create the nature.

1

Sites I would like to work with ≡
 park (grass field, trees, flowers)

- street (cars etc)
- ground
 - concrete
 - shingle
 - grass

I want my sculptures to have a message at each stage, sometimes directly and sometimes with abstraction. So people will see my work can think what messages I wanted them to feel through the work and also to be inspired by what I am trying to represent.

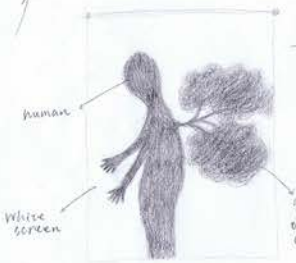
Materials & Media ≡

- soil
- branches
- leaves
- clay
- Coloured paper
- recyclings
- straw
- casting
- glass bottles (beer?)
- (beer?)



- Susy Oliveira
 this artist has made a face with branches which are made with paper (!) I think she wants to represent that nature and recycling are part of people's life by showing that the face looks like it was naturally made by nature.

MORE IDEAS



I need light behind the screen to light up the human and the tree to make silhouette of them.

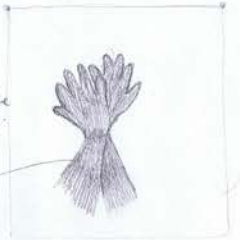


artist medal: Jackie Brooker

2

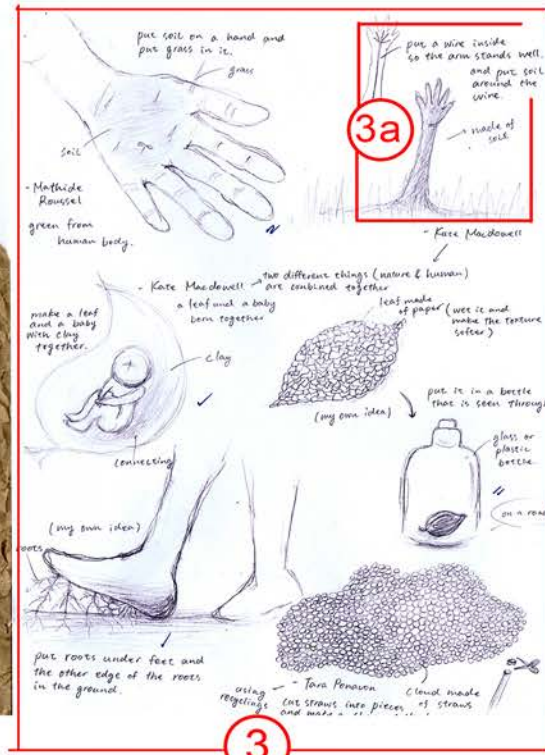
Silhouette of a human and some part of a tree
 → nature is growing from human and the arms are showing how powerful the tree is trying to grow longer and wider!

But if needed, I could add some extra stuff around the shape made with hands, e.g. flowers + butterfly



Just like the one above, but uses both hands and makes a shape of a flower or any

Jackie brooker.

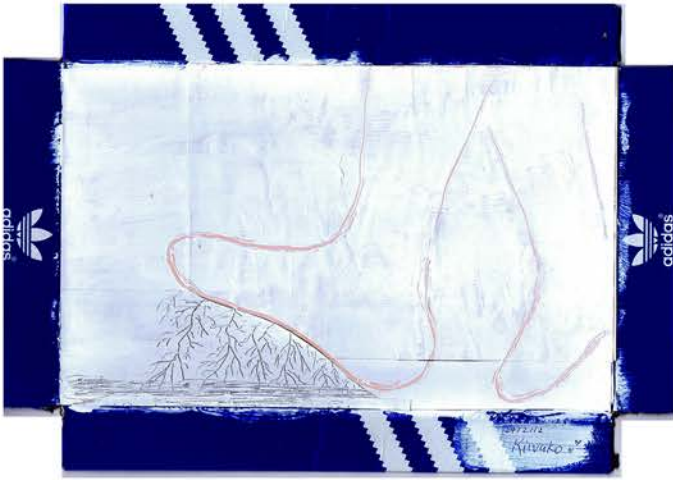


3



4





• roots . celotape
• foot

5

⊙ Positive aspects ⊙

- The roots are placed 'spreadly' and some of them have got soil on, so it looks realistic.
- The roots are touching the ground and it helps to show that the roots and human are "connecting"

⊙ Negative aspects ⊙

- the celotape is quite visible and it could be put more behind.
- I should have put more hairy roots and some soil near the toe.
- It would be interesting if I used the bottom of a foot and put some soil and lots of roots growing from the soil.

6

- Some roots are connecting the ground and the foot and it shows that nature is a source of energy for human. - Human gets energy from nature through the roots.

↳ so this sculpture relates to the theme of "connection of life".

I thought it wasn't very successful as I couldn't find suitable hairy roots for the foot and especially near the toe, it looks a bit empty. However, I have got some good roots on the middle.

- Comparing the sculpture and sculpture drawing, they look similar but less hairy roots in the actual sculpture.

6a

- On the hand, grass started growing and it shows that human creates nature.

- I think this sculpture was successful because the contrast of the colours of the hand and soil helps to get focused on the soil.

⊙ Positive aspects ⊙

- The grass looks quite natural in the soil.
- The area with the soil isn't really clearly shaped so it looks natural.

⊙ Negative aspects ⊙

- I should have had more smaller textured soil, so it would look more natural.
- The grass could be more visible.

• nana
• grass
• soil



7